

Repairs to Existing Trails



Tom Moody Trail Repairs Before and After



Trail Repairs



Petroglyph Overlook
Stairs Installation



Waterbird Overlook Trail Reroute

Restoration and Erosion Control for 1.2 acres of Unauthorized Roads and Trails



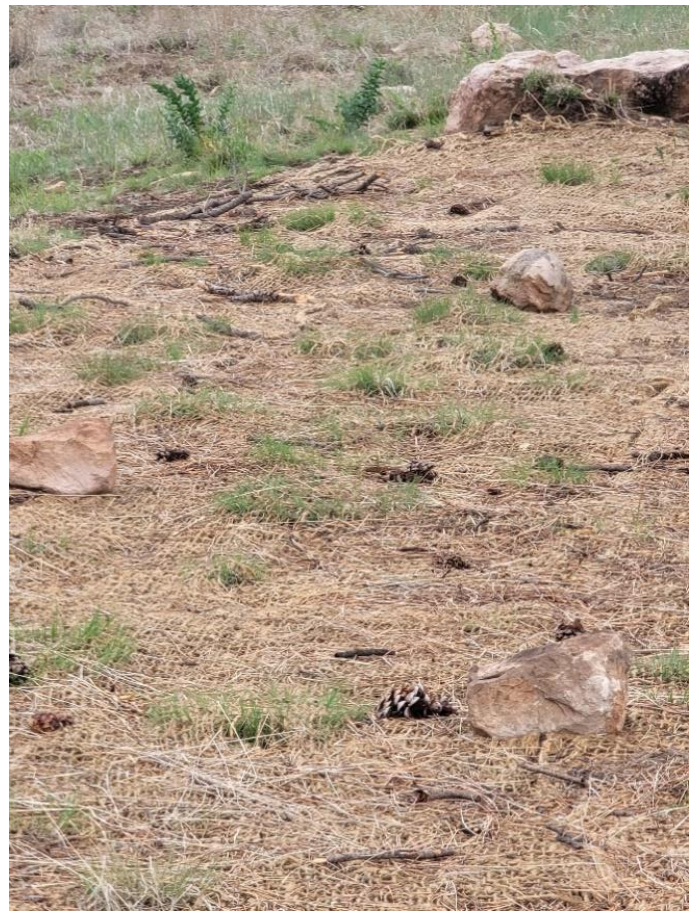
Unauthorized Road and Trail Restoration Before and After



Unauthorized Road and Trail Resotration Before and After

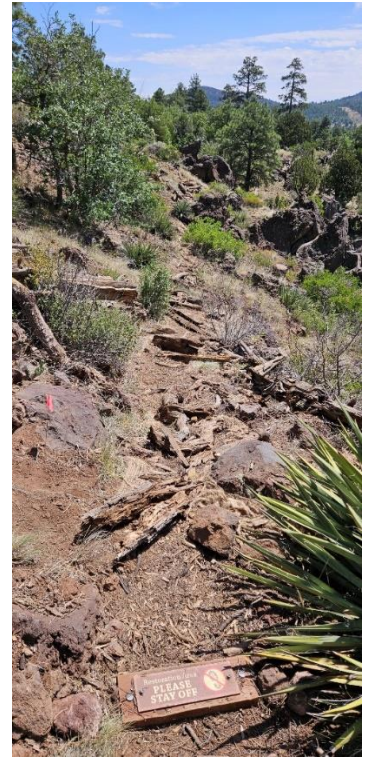


Unauthorized Road and Trail Resotration Before and After



Unauthorized Road and Trail Resotration Before and After

Signage Installation



Signage Installation

Visitor Maps Printed

UNIQUE VEGETATION

A number of different vegetative communities are present throughout the Preserve given the different habitats available, including riparian areas, forest uplands, and canyons. In fact, botanists have identified over 270 separate plant species. During your visit, keep an eye out for expansive meadows of native grasses and wildflowers, wetlands with cattails and willows, and canyon walls lined with grapevines and yuccas.



ARCHAEOLOGICAL IMPORTANCE

The Northern Sinagua people occupied northern Arizona between 700 and 1300 A.D. As a result, Picture Canyon is home to an abundant collection of cultural resources from their occupancy. In fact, Picture Canyon has the greatest concentration of Northern Sinaguan petroglyphs in Arizona.

During your visit, you will see a few of the nearly 800 petroglyph images etched into the canyon walls and boulders. Visit the Waterbird Site to see depictions of archers, turtles, large mammals, and birds.

Please show respect and help us preserve these fragile cultural resources for future generations by not touching petroglyphs or removing any artifacts from the Preserve.



HISTORICAL RESOURCES



From 1887 to 1966, the ponderosa pine forests of northern Arizona were home to an extensive network of logging railroads.

More than 770 miles of rail line were built for logging companies to access stands of timber for harvest. The Greenlaw Lumber Company installed a rail line at Picture Canyon to harvest timber in 1908 and 1909 using cross cut saws. The railroad beds are still visible in some places of the Preserve and there is also a historic railroad trestle on the property.

RULES AND REGULATIONS

Prohibited Use. Picture Canyon is closed to motorized vehicles, hunting, camping, campfires, fuelwood collection, and overnight uses.

Respect Wildlife. Picture Canyon provides ample opportunity to observe wildlife, but please do so from a distance to ensure your safety. Hunting is strictly prohibited within the Preserve.

Equestrian Use. Horses are permitted within Picture Canyon but to protect the trails, please do not ride your horse during wet conditions.

Leave No Trace. Dispose of your waste properly by taking it home with you.

Respect Cultural Resources. Picture Canyon is a very important cultural site in northern Arizona. Please help us protect these fragile resources by not touching petroglyphs or taking anything home with you.

Keep Pets on a Leash. Be mindful of other visitors by keeping your pet on a leash. To enhance visitor experiences and reduce environmental impacts, please pick up after your pet.

Be Prepared. Bring comfortable walking shoes, sun protection, and ample amounts of water with you for your visit to the Preserve.

GET INVOLVED

Did you enjoy your visit to Picture Canyon Natural and Cultural Preserve? Do you want to get involved in trail maintenance, weed abatement, or other volunteer projects at the Preserve? Visit the City of Flagstaff's Open Space Program at flagstaff.az.gov/4131/Volunteer-Opportunities to get involved!



For more information about Flagstaff natural areas: www.flagstaff.az.gov/openspace • 928-213-2154



Thank you for visiting Picture Canyon
Natural and Cultural Preserve

The City of Flagstaff acquired 478 acres in 2012 to protect a culturally and ecologically sensitive area and provide a natural place for visitors to learn about ecology, geology, and archaeology, while participating in outdoor recreation.

Use the information outlined in this brochure to take a self-guided tour of the Preserve. We hope you enjoy your visit!



Scan this QR code to download an interactive map of the Picture Canyon trail system to your smartphone using the Avenza app.

Follow us on:
Facebook @COFcreation
Instagram @cityofflagstaffparks

HOW TO GET THERE

From downtown Flagstaff, travel east on Route 66 for 4 miles. Turn right at the Auto Park sign to remain on Historic Route 66. Turn left on El Paso Flagstaff Road and a parking area is located approximately 1 mile down the road on the right side.

RECREATIONAL OPPORTUNITIES

TOM MOODY TRAIL - 3.9 mile loop trail with canyon vistas, extensive petroglyph panels, and interpretive areas. Travel counter-clockwise for an easy 0.4 mile one-way walk to the waterfall.

DON WEAVER TRAIL - 0.7 mile educational trail that travels through a portion of the canyon and proceeds along a pipeline access road. Provides access to vistas and cultural resource points of interest. To view the spectacular Waterbird petroglyph site, proceed 0.1 miles east on the Tom Moody Trail from the bridge.

LOOP HIKE - 2.5 miles. Follow the Tom Moody Trail to the bridge, with a spur to the Waterbird Petroglyph site and back, and then follow the Don Weaver Trail back to the parking area.

ARIZONA TRAIL - 1.2 mile segment of the 800+ mile trail that stretches from Mexico to Utah traverses through the Preserve.

WILDLIFE

Picture Canyon is one of the premiere wildlife and bird watching sites in the region given its designation as a Watchable Wildlife Site and Audubon Bird Sanctuary.

Be sure to visit the pond, a rare riparian habitat in Coconino County, for a chance to see one of the 130 bird species that visit the Preserve. Keep an eye out for raptors, owls, bats, eagles, waterfowl, shorebirds, wading birds, or songbirds during your visit.

Mammals also call Picture Canyon home. Elk, deer, raccoon, and porcupines are common in the area. Picture Canyon provides ample opportunity to observe wildlife, but please do so from a distance to ensure your safety.

