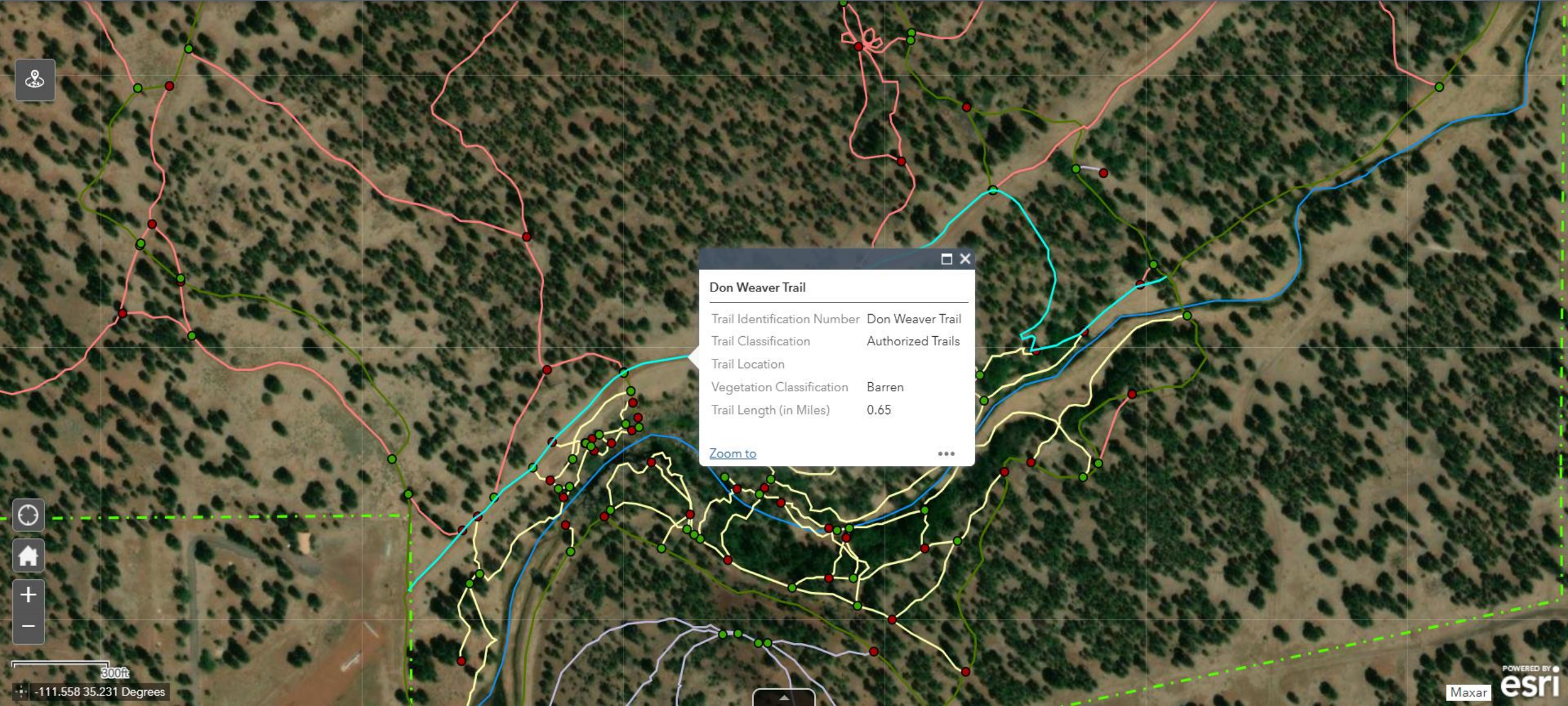


Don Weaver Trail Realignment Proposal





200ft
-111.552 35.232 Degrees



Don Weaver Trail

Trail Identification Number	Don Weaver Trail
Trail Classification	Authorized Trails
Trail Location	
Vegetation Classification	Barren
Trail Length (in Miles)	0.65

[Zoom to](#) ...



300ft
-111.558 35.231 Degrees



1. Before Submitting to State for Review:

- a. Open Spaces Commission Update**
- b. Joint project with Flagline Trails and Archaeologist to come up with proposed alignment that provides buffer around identified archaeological sites.**
- c. Open Spaces Commission review and recommendation**
- d. Open Space Section decision**
- e. Submit for review by (concurrently):**
 - i. SHPO
 - ii. State Museum
 - iii. AZ State Parks

2. After State Review

- a. Tribal consultation review and approval**
- b. Apply for grants**
- c. Archaeologist needs to be onsite during the project (this is eligible for grant funding)
- d. A NEPA analysis may be needed, especially if you are using federal funding to implement or maintain the trail. It could possibly be a (section 106) categorical exclusion. Work with a contractor (Environmental Consultant) to determine the necessity and level of NEPA that needs to be completed. (NEPA was done in 2012, but expires after 10 years)
- e. Get 3 bids to complete the work**
- f. Work completed; grant reports**