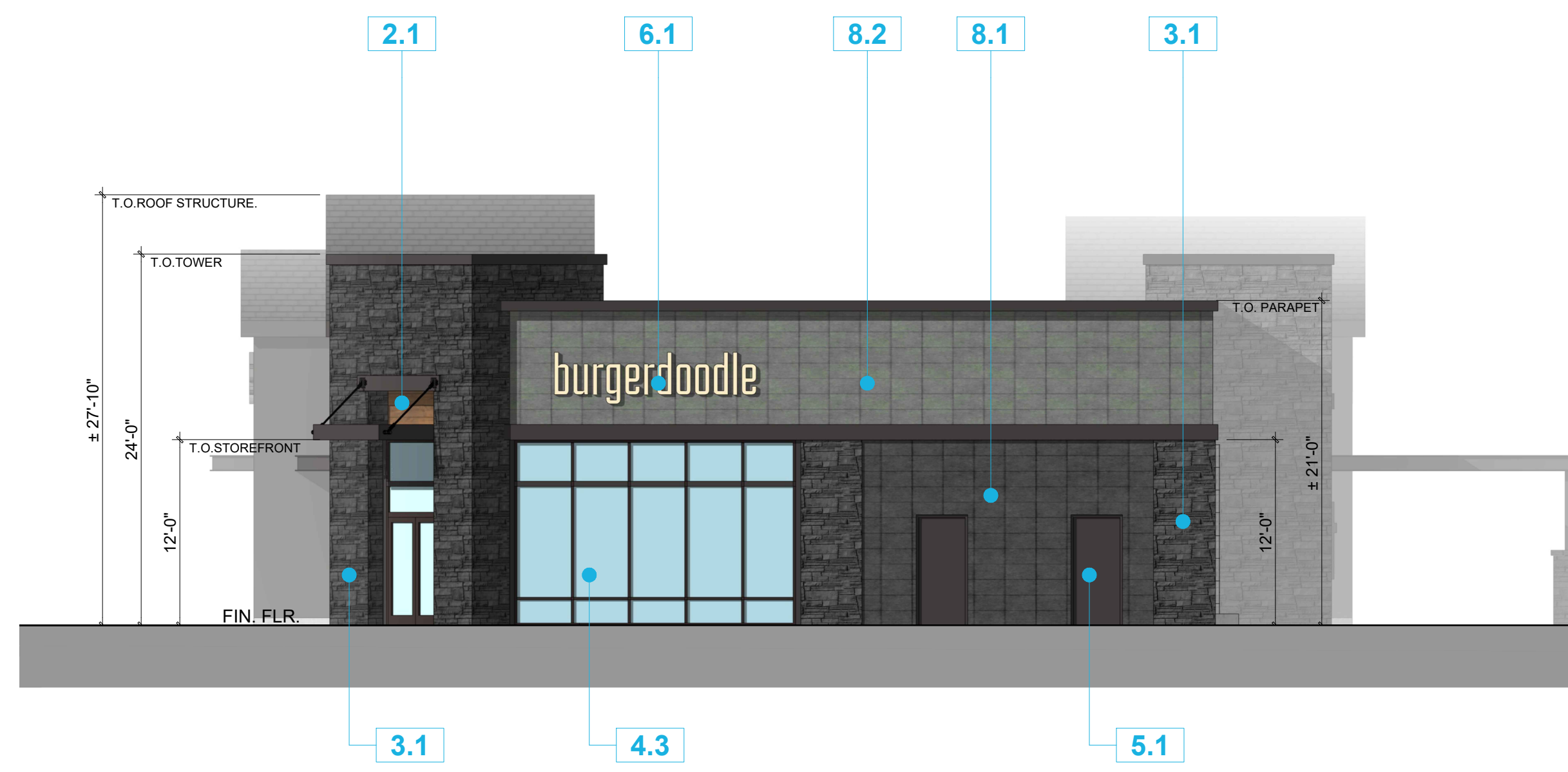
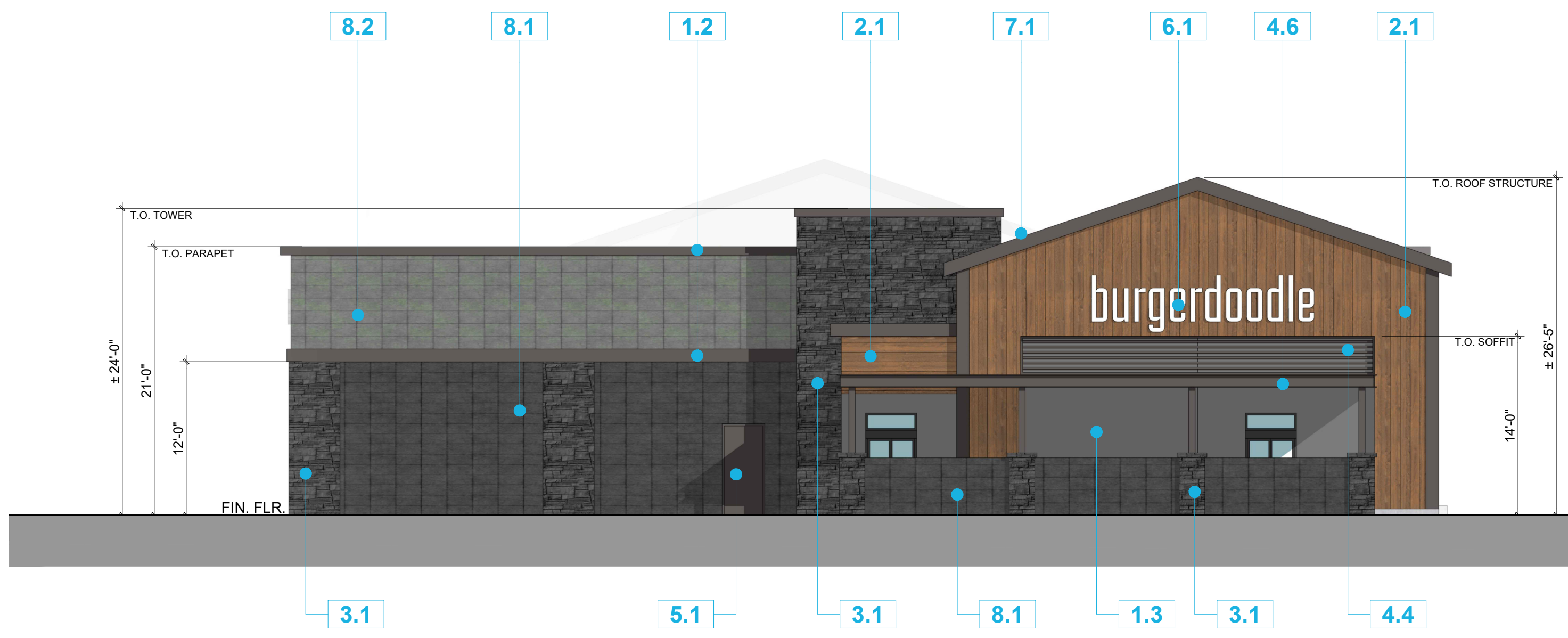




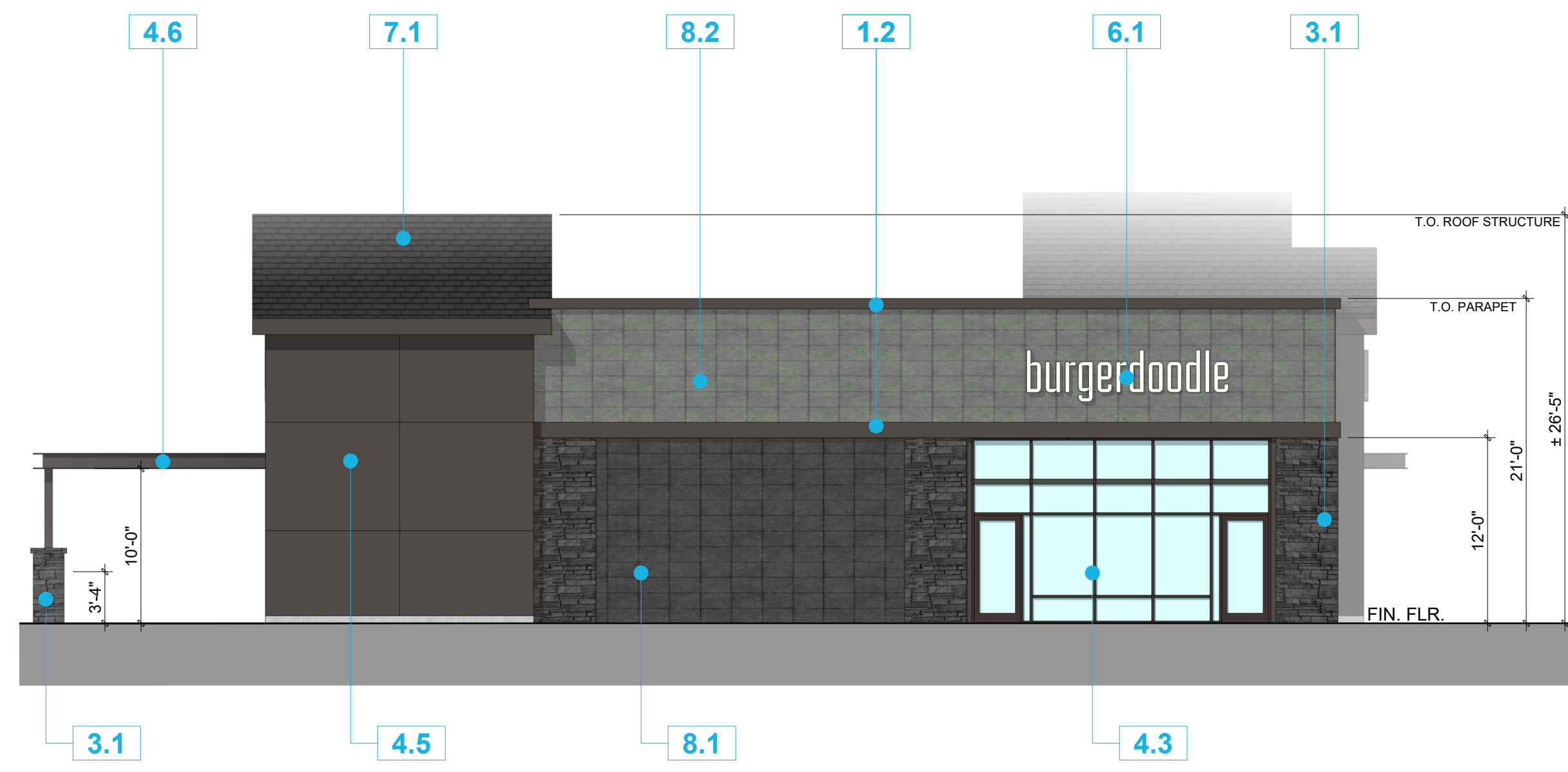
01-FRONT ELEVATION



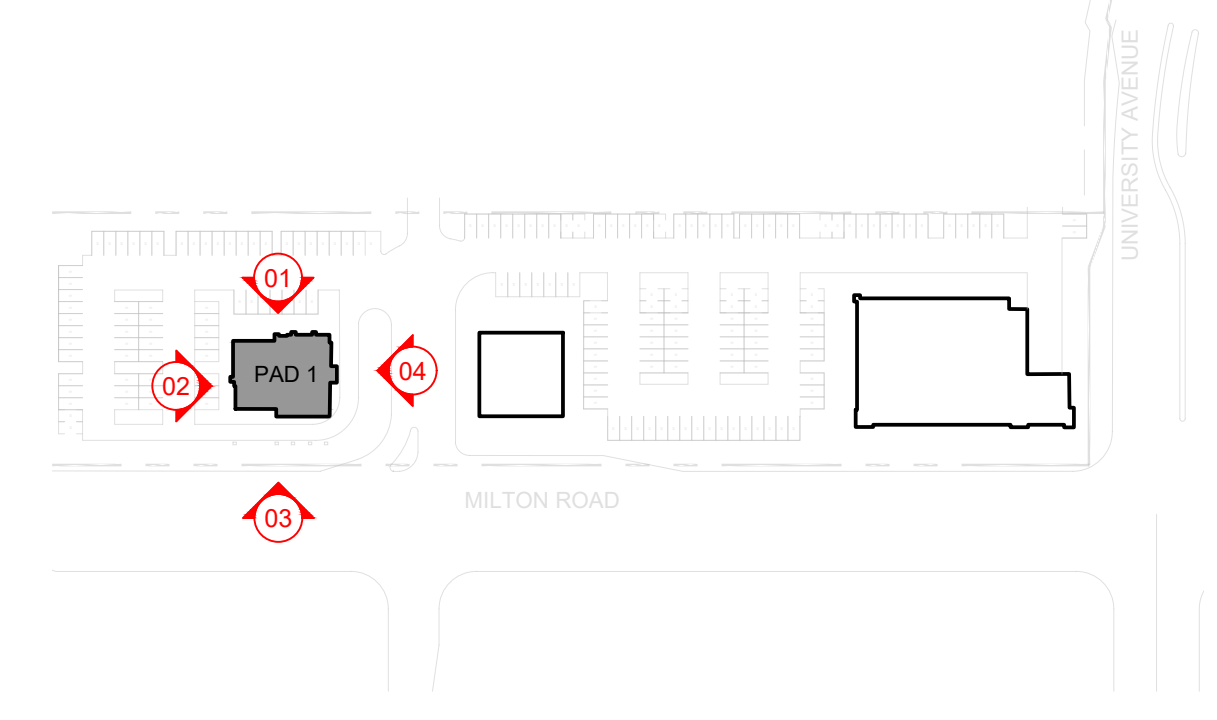
02- RIGHT ELEVATION



03-REAR ELEVATION



04-LEFT ELEVATION



KEY PLAN - N.T.S.

### MATERIAL LEGEND

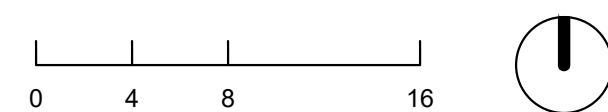
- 1.1 STUCCO (BROWN)
- 1.2 STUCCO (GRAY)
- 1.3 STUCCO (LIGHT GRAY)
- 2.1 SIDING
- 3.1 STONE VENEER
- 4.1 METAL CANOPY
- 4.3 STOREFRONT SYSTEM
- 4.4 METAL LOUVER
- 4.5 METAL PANELS
- 4.6 CANOPY OVER DRIVE-THROUGH AISLE
- 5.1 HM DOOR
- 6.1 SIGNAGE
- 7.1 ROOF TILE
- 8.1 SPLITFACE CMU BLOCK (BLACK)
- 8.2 SPLITFACE CMU BLOCK (GRAY)

Material Percentage	Front	Left	Rear	Right	Total
Primary					
Wood Siding	560 41%	0 0%	447 24%	12 1%	1019 20%
Stone Veneer	356 26%	144 13%	336 18%	300 35%	1136 22%
Splitface CMU	270 20%	620 55%	647 35%	536 63%	2073 40%
Secondary					
Stucco	51 4%	0 0%	349 19%	0 0%	400 8%
Metal	138 10%	358 32%	75 4%	8 1%	578 11%
Total Area (SF)	1374 100%	1122 100%	1854 100%	856 100%	5205 100%

NOTE:  
ALL SIGNAGE SHOWN IS CONCEPTUAL AND MAY BE ADJUSTED AS THE DESIGN OF THE BUILDING DEVELOPS.

THE COLOR OF THE EXTERIOR FINISHES MAY BE ADJUSTED AS THE DESIGN OF THE BUILDING DEVELOPS, BUT THE OVERALL DESIGN CONCEPT WILL REMAIN THE SAME.

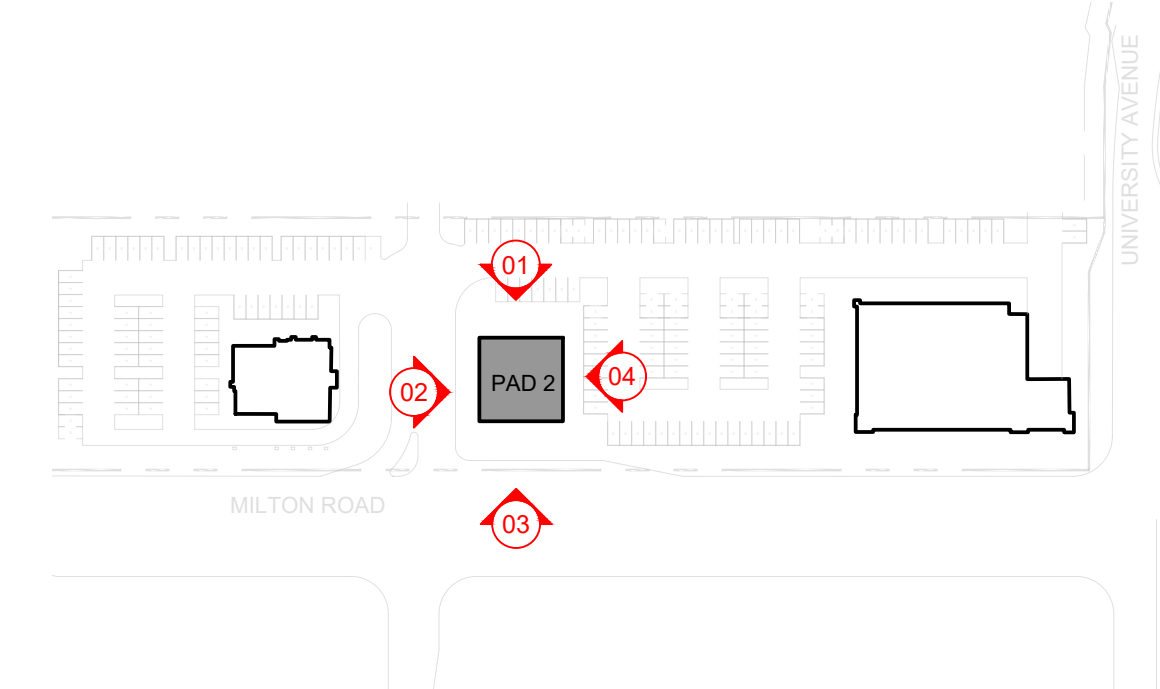
250644 **ktgy** MILLTOWN RETAIL FLAGSTAFF  
FLAGSTAFF, AZ



## PAD 1 ELEVATIONS

# 01

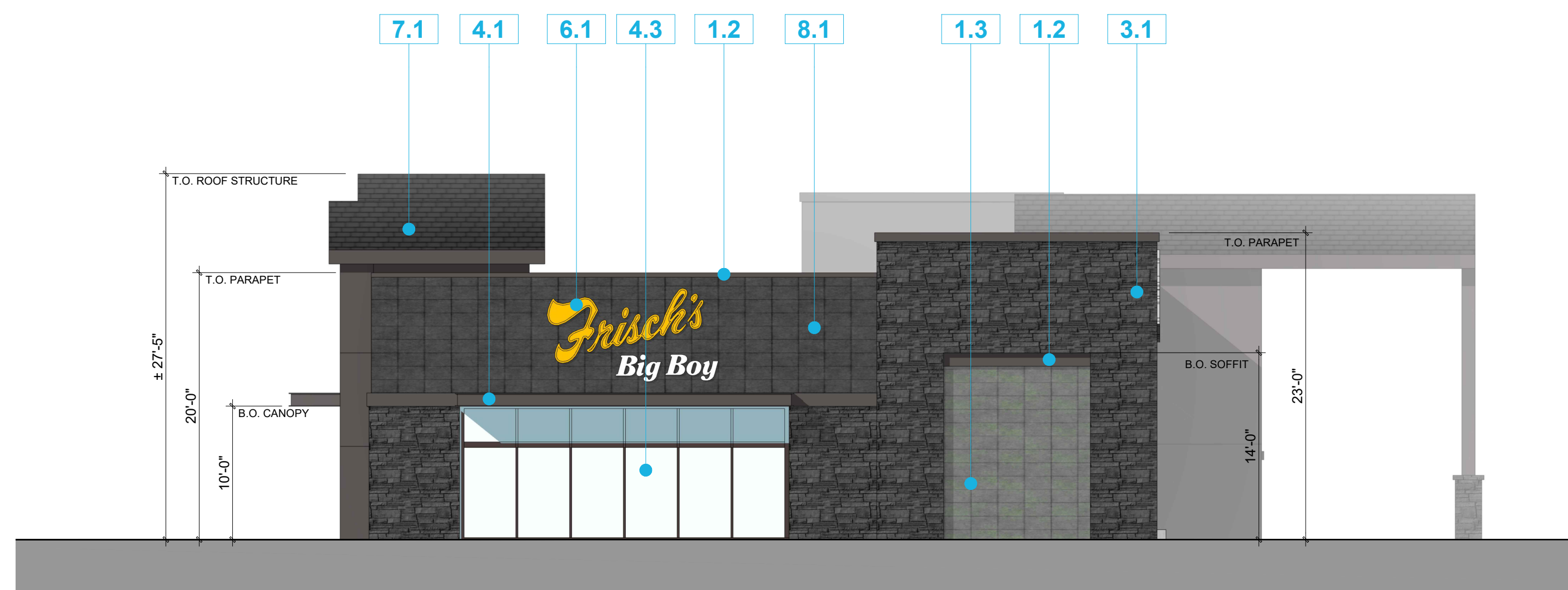
08/28/2025



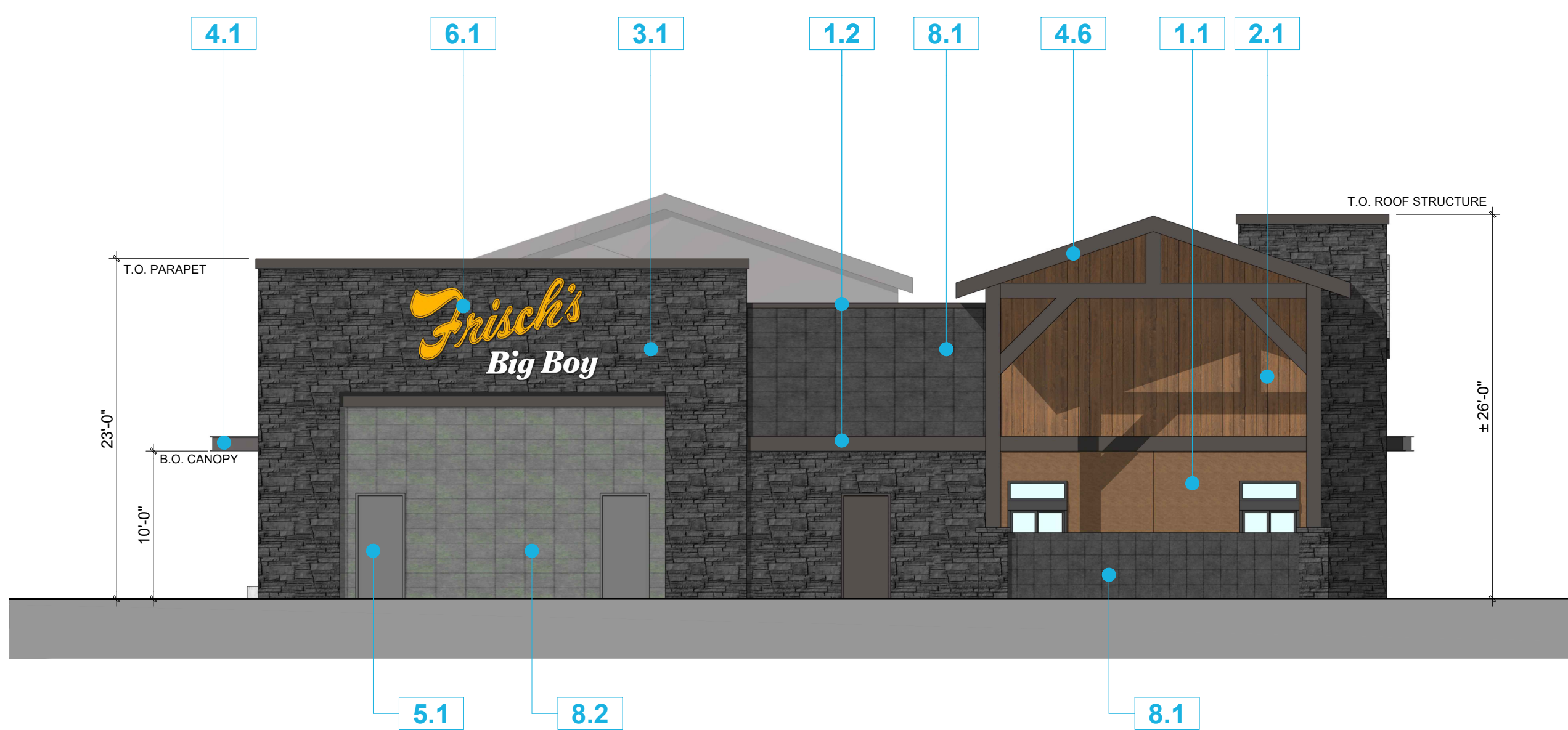
KEY PLAN - N.T.S.



01-FRONT ELEVATION



02- RIGHT ELEVATION



03-REAR ELEVATION



04-LEFT ELEVATION

## MATERIAL LEGEND

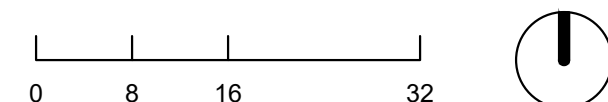
- 1.1 STUCCO (BROWN)
- 1.2 STUCCO (GRAY)
- 1.3 STUCCO (LIGHT GRAY)
- 2.1 SIDING
- 3.1 STONE VENEER
- 4.1 METAL CANOPY
- 4.3 STOREFRONT SYSTEM
- 4.4 METAL LOUVER
- 4.5 METAL PANELS
- 4.6 CANOPY OVER DRIVE-THROUGH AISLE
- 5.1 HM DOOR
- 6.1 SIGNAGE
- 7.1 ROOF TILE
- 8.1 SPLITFACE CMU BLOCK (BLACK)
- 8.2 SPLITFACE CMU BLOCK (GRAY)

Material Percentage	Front	Left	Rear	Right	Total	
Primary	Wood Siding	399 32%	0 0%	250 16%	0 0%	649 13%
	Stone Veneer	311 25%	407 34%	680 45%	449 38%	1847 36%
	Splitface CMU	359 29%	234 20%	378 25%	472 40%	1443 28%
Secondary	Stucco	28 2%	17 1%	167 11%	0 0%	212 4%
	Metal	139 11%	537 45%	46 3%	263 22%	985 19%
<b>Total Area (SF)</b>	<b>1237 100%</b>	<b>1195 100%</b>	<b>1520 100%</b>	<b>1184 100%</b>	<b>5136 100%</b>	

NOTE:  
ALL SIGNAGE SHOWN IS CONCEPTUAL AND MAY BE ADJUSTED AS THE DESIGN OF THE BUILDING DEVELOPS.

THE COLOR OF THE EXTERIOR FINISHES MAY BE ADJUSTED AS THE DESIGN OF THE BUILDING DEVELOPS, BUT THE OVERALL DESIGN CONCEPT WILL REMAIN THE SAME.

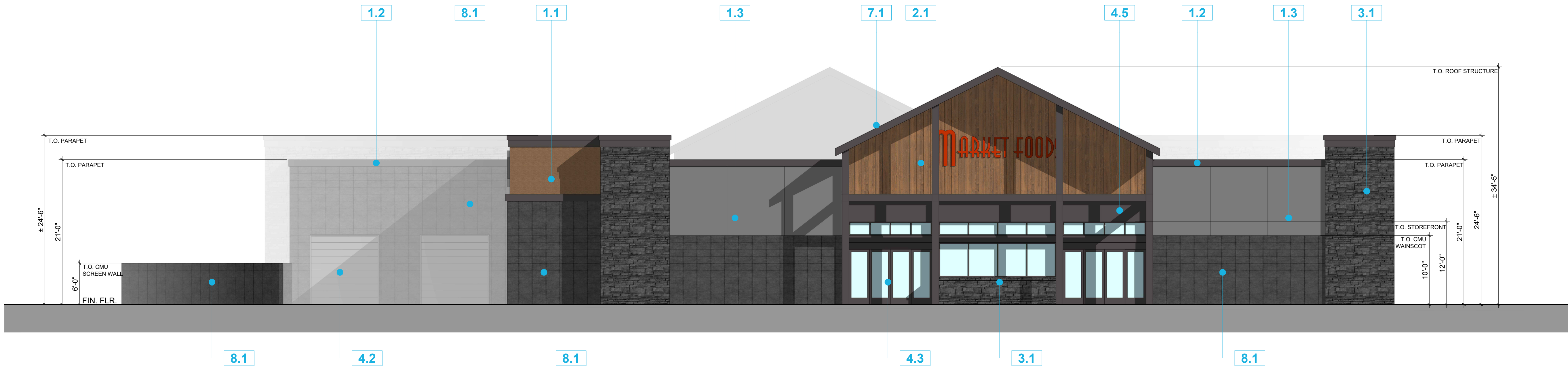
250644 **ktgy** MILLTOWN RETAIL FLAGSTAFF  
FLAGSTAFF, AZ



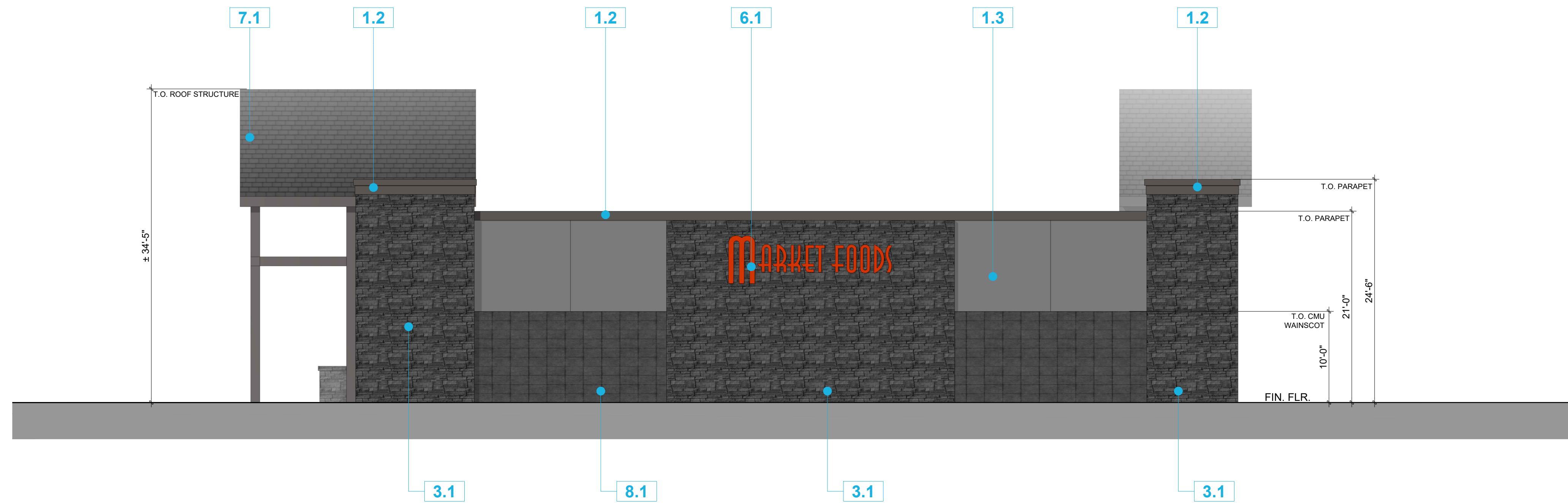
## PAD 2 ELEVATIONS

# 02

08/28/2025



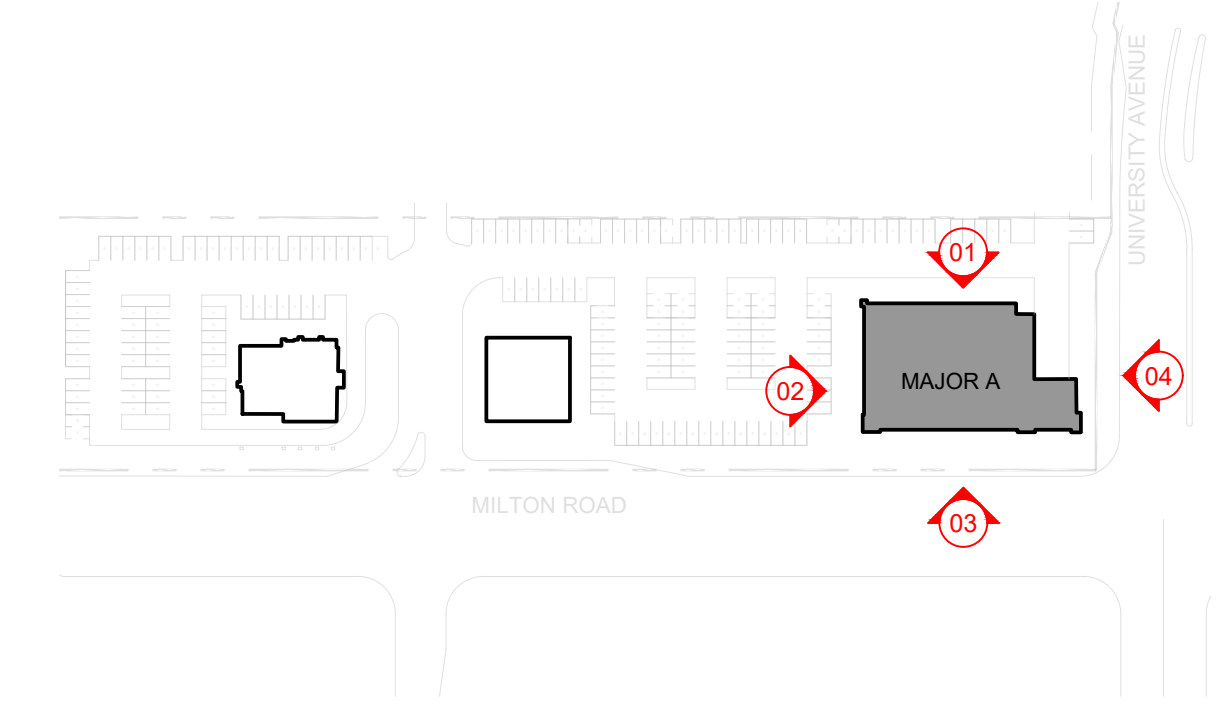
01-FRONT ELEVATION



02- RIGHT ELEVATION

NOTE:  
ALL SIGNAGE SHOWN IS CONCEPTUAL AND MAY BE ADJUSTED AS THE DESIGN OF THE BUILDING DEVELOPS.

THE COLOR OF THE EXTERIOR FINISHES MAY BE ADJUSTED AS THE DESIGN OF THE BUILDING DEVELOPS, BUT THE OVERALL DESIGN CONCEPT WILL REMAIN THE SAME.



KEY PLAN - N.T.S.

## MATERIAL LEGEND

- 1.1 STUCCO (BROWN)
- 1.2 STUCCO (GRAY)
- 1.3 STUCCO (LIGHT GRAY)
- 2.1 SIDING
- 3.1 STONE VENEER
- 4.1 METAL CANOPY
- 4.3 STOREFRONT SYSTEM
- 4.4 METAL LOUVER
- 4.5 METAL PANELS
- 4.6 CANOPY OVER DRIVE-THROUGH AISLE
- 5.1 HM DOOR
- 6.1 SIGNAGE
- 7.1 ROOF TILE
- 8.1 SPLITFACE CMU BLOCK (BLACK)
- 8.2 SPLITFACE CMU BLOCK (GRAY)

Material Percentage		Front	Left	Rear	Right	Total
Primary	Wood Siding	554 18%	0 0%	854 21%	0 0%	1407 11%
	Stone Veneer	531 17%	487 22%	913 23%	3212 78%	5144 39%
	Splitface CMU	1185 38%	1320 61%	1454 36%	421 10%	4381 33%
Secondary	Stucco	589 19%	367 17%	769 19%	464 11%	2189 16%
	Metal	241 8%	0 0%	0 0%	0 0%	241 2%
Total Area (SF)		3100 100%	2174 100%	3990 100%	4097 100%	13361 100%

## MAJOR A ELEVATIONS

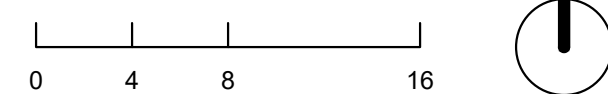
03

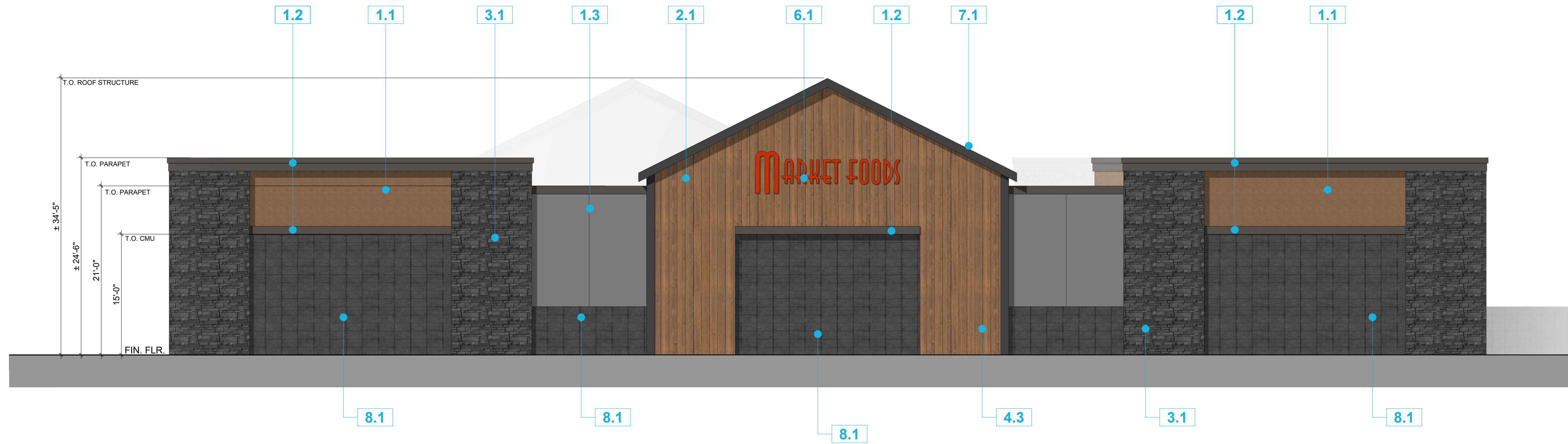
08/28/2025

250644

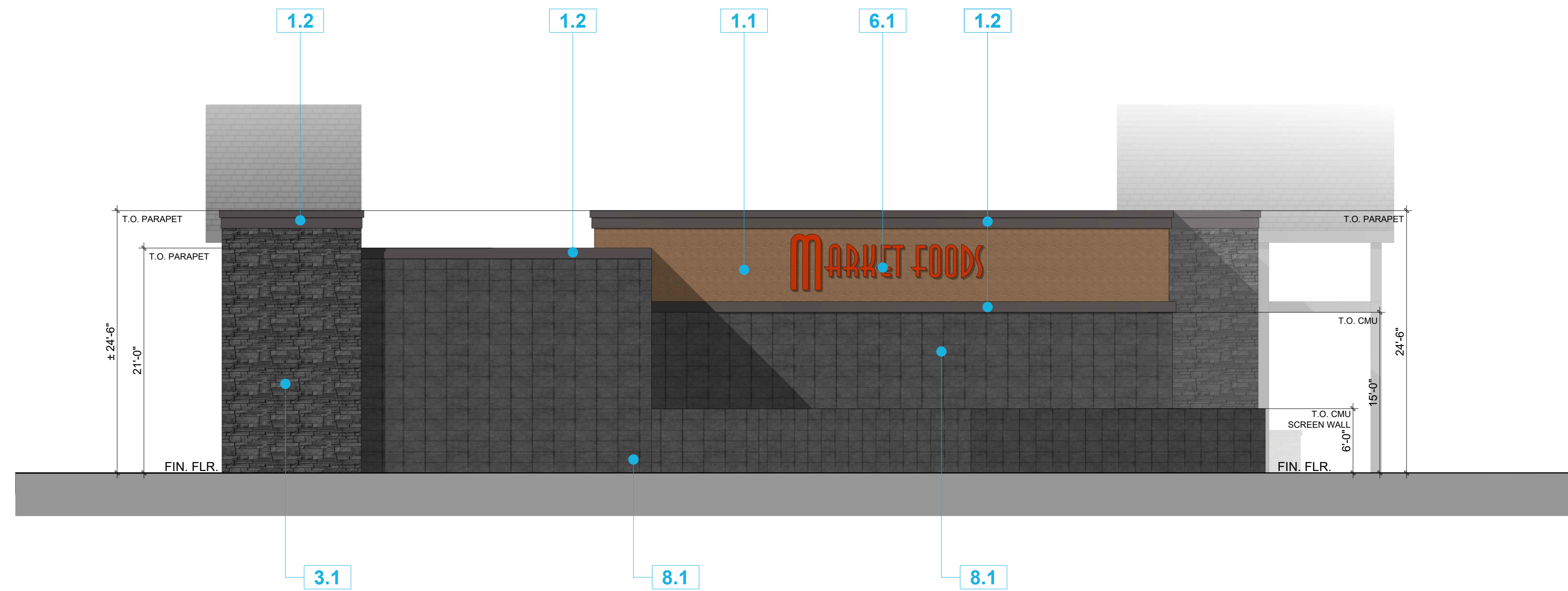
ktgy

MILLTOWN RETAIL FLAGSTAFF  
FLAGSTAFF, AZ





03- REAR ELEVATION

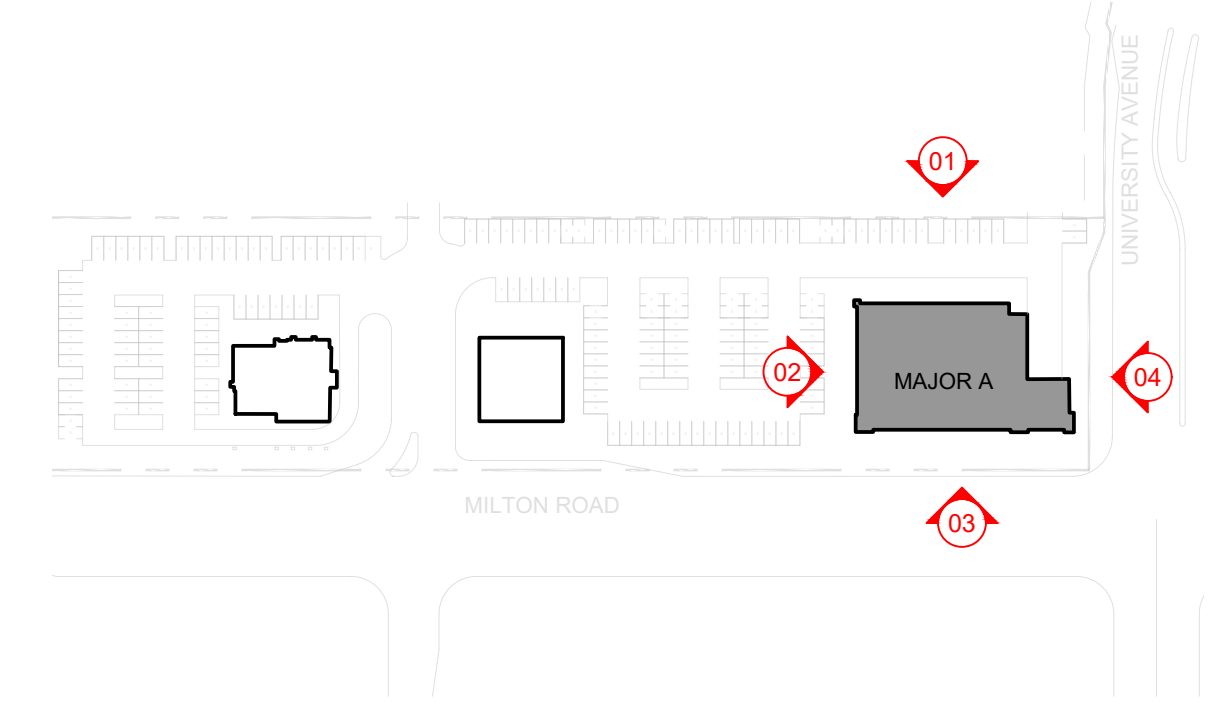
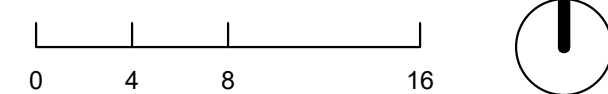


04- LEFT ELEVATION

NOTE:  
ALL SIGNAGE SHOWN IS CONCEPTUAL AND MAY BE ADJUSTED AS THE DESIGN OF THE BUILDING DEVELOPS.

THE COLOR OF THE EXTERIOR FINISHES MAY BE ADJUSTED AS THE DESIGN OF THE BUILDING DEVELOPS, BUT THE OVERALL DESIGN CONCEPT WILL REMAIN THE SAME.

**MILLTOWN RETAIL FLAGSTAFF**  
FLAGSTAFF, AZ



KEY PLAN - N.T.S.

**MATERIAL LEGEND**

- 1.1 STUCCO (BROWN)
- 1.2 STUCCO (GRAY)
- 1.3 STUCCO (LIGHT GRAY)
- 2.1 SIDING
- 3.1 STONE VENEER
- 4.1 METAL CANOPY
- 4.3 STOREFRONT SYSTEM
- 4.4 METAL LOUVER
- 4.5 METAL PANELS
- 4.6 CANOPY OVER DRIVE-THROUGH AISLE
- 5.1 HM DOOR
- 6.1 SIGNAGE
- 7.1 ROOF TILE
- 8.1 SPLITFACE CMU BLOCK (BLACK)
- 8.2 SPLITFACE CMU BLOCK (GRAY)

Material Percentage	Front	Left	Rear	Right	Total	
Primary	Wood Siding	554 18%	0 0%	854 21%	0 0%	1407 11%
	Stone Veneer	531 17%	487 22%	913 23%	3212 78%	5144 39%
	Splitface CMU	1185 38%	1320 61%	1454 36%	421 10%	4381 33%
Secondary	Stucco	589 19%	367 17%	769 19%	464 11%	2189 16%
	Metal	241 8%	0 0%	0 0%	0 0%	241 2%
Total Area (SF)	3100 100%	2174 100%	3990 100%	4097 100%	13361 100%	

**MAJOR A ELEVATIONS**

**04**

08/28/2025

### 1.1

STUCCO  
SMOOTH FINISH  
SW 6095 TOASTY  
(SHERWIN WILLIAMS)



### 1.2

STUCCO  
SMOOTH FINISH  
SW 9600 ARMORY  
(SHERWIN WILLIAMS)



### 1.3

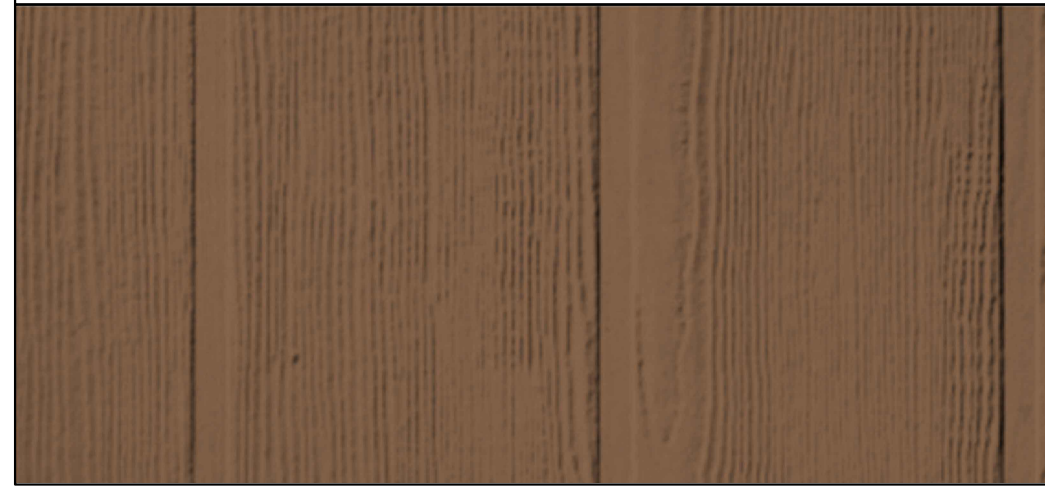
STUCCO  
SMOOTH FINISH  
SW 2849 WESTCHESTER GRAY  
(SHERWIN WILLIAMS)



EXTERIOR MATERIAL LOG			
Drawing Material Key	Material Description	Product/Color	Manufacturer
1.1	Stucco	SW 6095 Toasty LRV: 19	Sherwin Williams
1.2	Stucco	SW 9600 Armory LRV: 5	Sherwin Williams
1.2	Stucco	SW 2849 Westchester Gray LRV: 19	Sherwin Williams
2.1	Siding	Hardie Panel, Sierra 8 Texture Painted to Match brown stucco LRV: 27	James Hardie
3.1	Stone Veneer	Country Ledgestone, Gunnison	Cultured Stone
4.1	Metal Canopy	Custom, Black LRV: 8	Reynobond
4.2	Metal Roll-Up Door	Black	Overhead Door
4.3	Metal Storefront System	Anodized Plus, "Dark Bronze" Y5N	YKK
4.4	Metal Louvers	Anodized, Painted to Match SW 9600 Armory	TBD
4.5	Metal Panels	Black LRV: 8	Reynobond
4.6	Canopy over Drive-Through Aisle	Black LRV: 8	Reynobond
5.1	Vinyl Window and Door System	Black	MI Windows
6.1	Signage	TBD	TBD
7.1	Asphalt Shingle Roof	Landmark, Moire Black, SRI (Solar Reflectance Index): 17	Certaiteed
8.1	CMU BLOCK	BLACK 250 MW	ORCO
8.2	CMU BLOCK	GRAY LW	ORCO

### 2.1

SIDING  
HARDIE PANEL  
SIERRA 8 TEXTURE



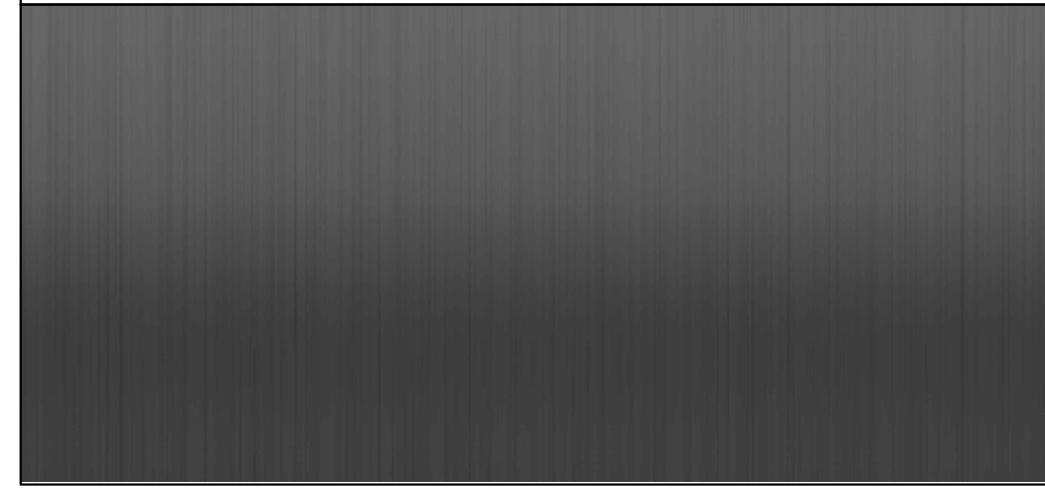
### 3.1

STONE  
CULTURED STONE  
COUNTRY LEDGESTONE  
GUNNISON



### 4.1

METAL CANOPY  
REYNOBOND  
PAINTED TO MATCH (1.2)



### 4.2

METAL ROLL-UP DOOR  
OVERHEAD DOOR  
PAINTED TO MATCH (1.3)



### 4.3

METAL STOREFRONT SYSTEM  
ANODIZED PLUS  
DARK BRONZE



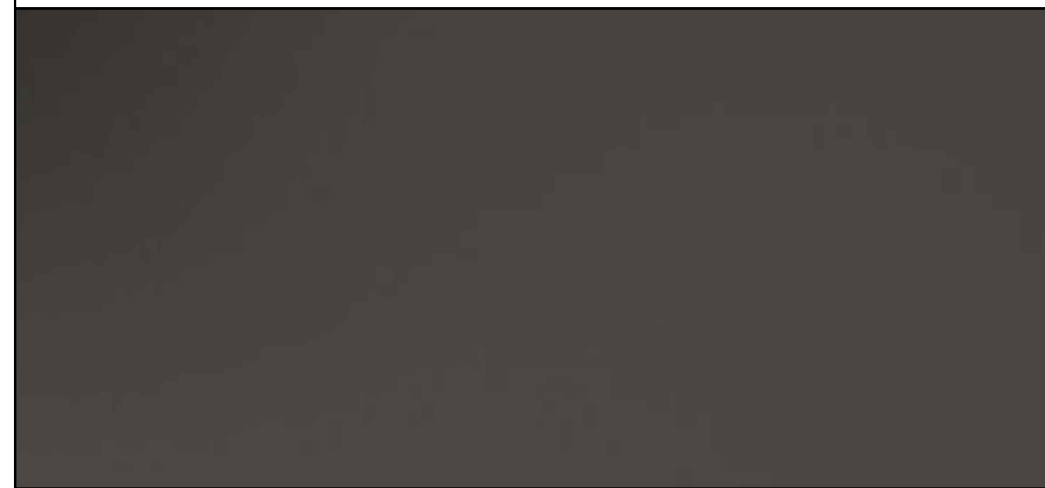
### 4.4

METAL LOUVERS  
ANODIZED  
PAINTED TO MATCH 1.2



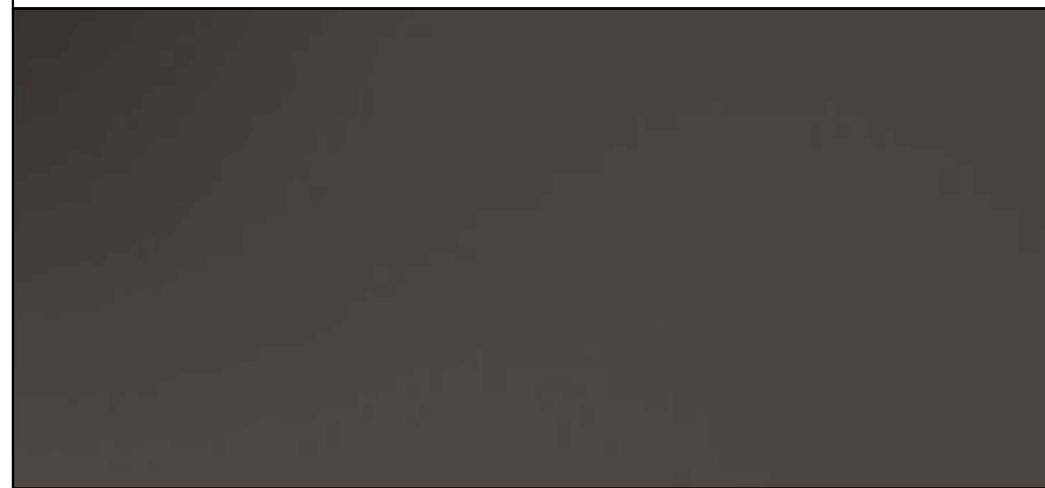
### 4.5

METAL PANELS  
REYNOBOND  
PAINTED TO MATCH (1.2)



### 4.6

CANOPY OVER DRIVE-THRU AISLE  
REYNOBOND  
PAINTED TO MATCH (1.2)



### 5.1

HM DOOR  
SMOOTH FINISH  
PAINTED TO MATCH ADJACENT



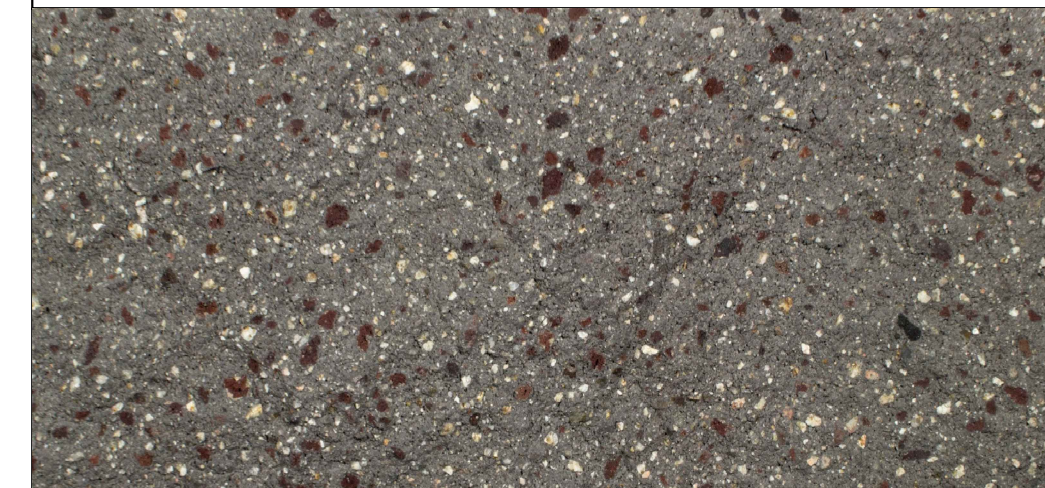
### 7.1

ASPHALT SHINGLE ROOF  
CERTAITEED  
LANDMARK  
MOIRE BLACK



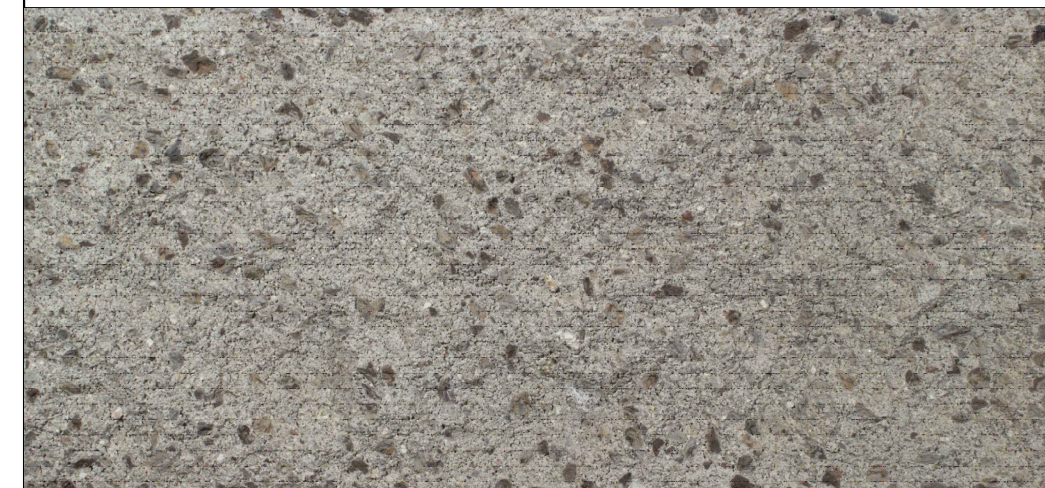
### 8.1

CMU BLOCK  
ORCO  
BLACK 250 MW  
SPLIT FACE



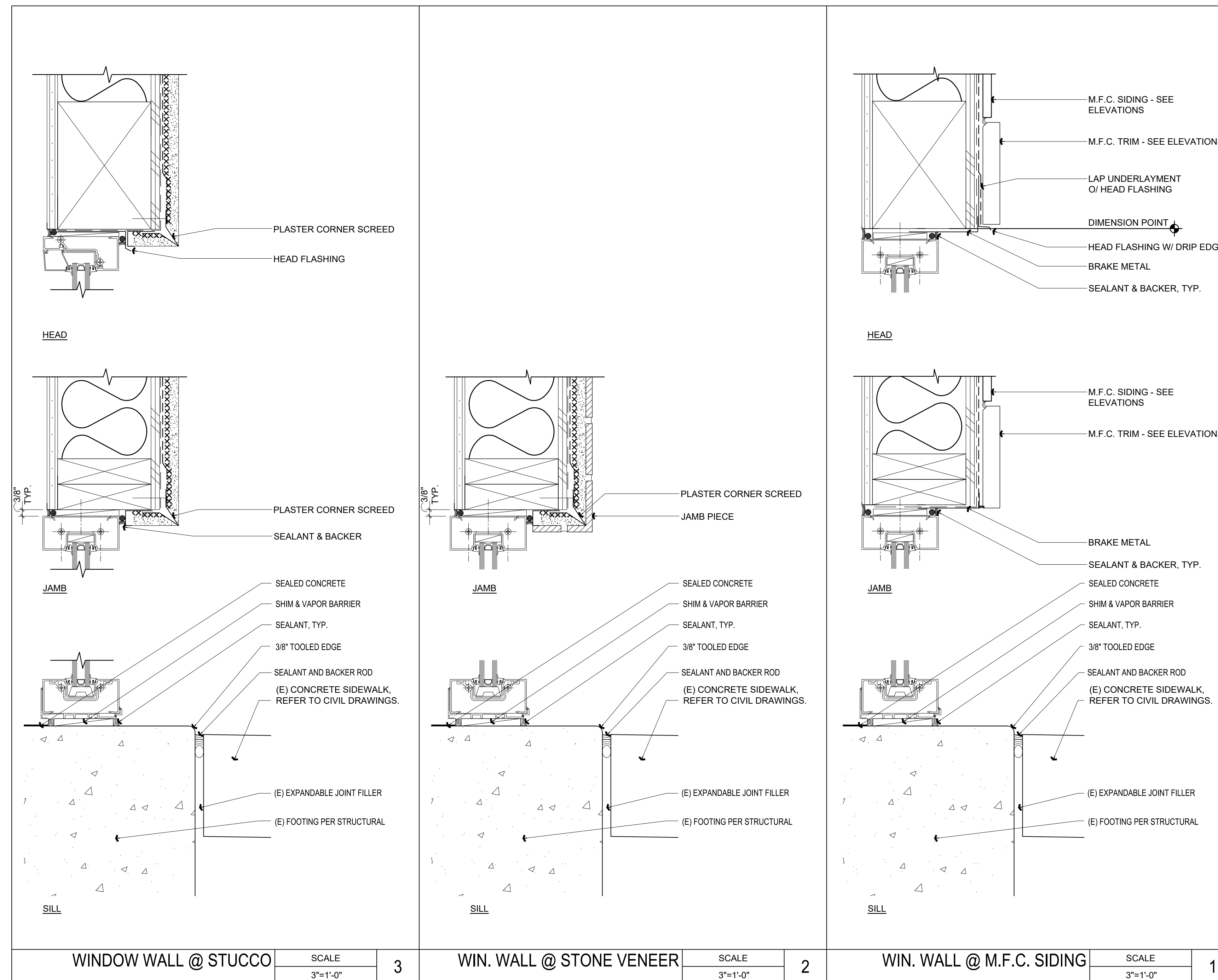
### 8.2

CMU BLOCK  
ORCO  
GRAY LW  
SPLIT FACE



NOTE:  
THE COLOR OF THE EXTERIOR FINISHES MAY BE ADJUSTED AS THE DESIGN OF THE BUILDING DEVELOPS, BUT THE OVERALL DESIGN CONCEPT WILL REMAIN THE SAME.

## MATERIAL BOARD



TYPICAL GLAZING  
DETAILS

06

08/28/2025

250644

ktgy

MILLTOWN RETAIL FLAGSTAFF  
FLAGSTAFF, AZ