

# The Criminal Justice System and Its Impacts

Improving  
Community  
Safety and  
Wellness?

Presented By:

## Coconino County Criminal Justice Coordinating Council

Superior Court Presiding Judge Ted Reed

County Attorney Ammon Barker

Legal Defender Joseph Carver

CJCC Director, Dianna Kalandros



# Stop & Investigation

---







Arrest



# Detention



## Initial Appearance

Charging



QUIET  
GRAND JURY  
IN SESSION

A middle-aged man with grey hair and a beard, wearing a black judicial robe and glasses, sits in a black leather chair behind a dark wooden desk. He is looking intently at the camera with a serious expression, his right hand resting on his glasses. His left hand holds a pen over a document on the desk. The background features wood-paneled walls and a window with vertical blinds. The word "Arraignment" is overlaid in white text across the center of the image.

# Arraignment

- **Disclosure**
- **Case Review &**
- **Plea Negotiation**



# Change of Plea



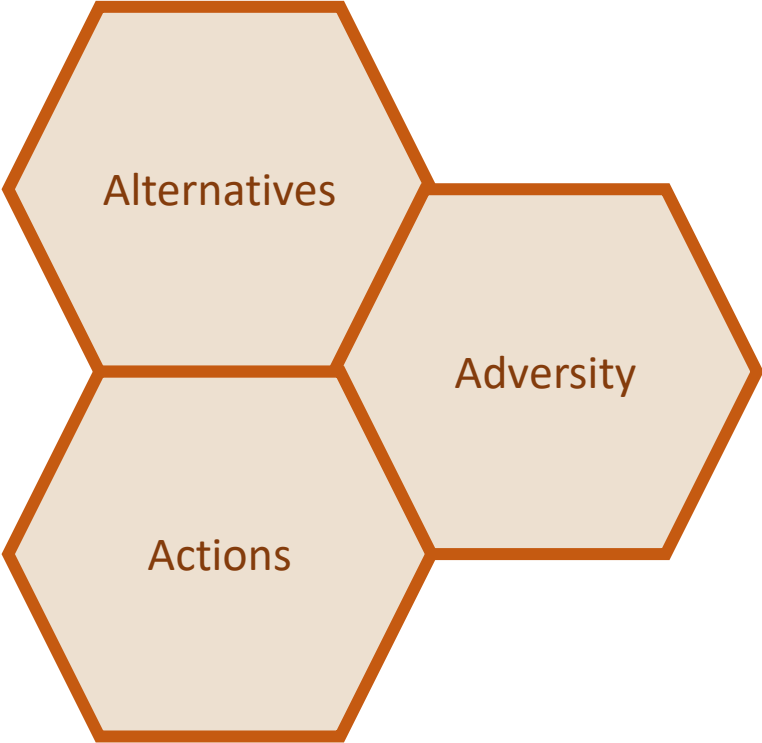


**. . . or  
Jury Trial**

A 3D maze with a white brushstroke overlay containing the text 'Navigating the System'. The maze is constructed from dark, textured blocks and is viewed from an elevated perspective. The white brushstroke is irregular and has a rough, hand-painted edge, partially obscuring the maze's path. The text is centered within the white area.

# Navigating the System

# Telling the Story



# The Decision: Trial vs. Plea

- Mandatory Minimums
- Quality of the Evidence
- Legal Issues
- Benefit of the Bargain





**Sentencing**





**JAIL**

**PRISON**

**CRIMINAL**

**CONVICTED**

**PRISON**

**CRIMINAL**

**CONVICTED**

**JAIL**

**PRISON**

**CRIMINAL**

**PRISON**





## Children of Incarcerated Parents

# How Can We Better Improve Community Safety and Wellness?



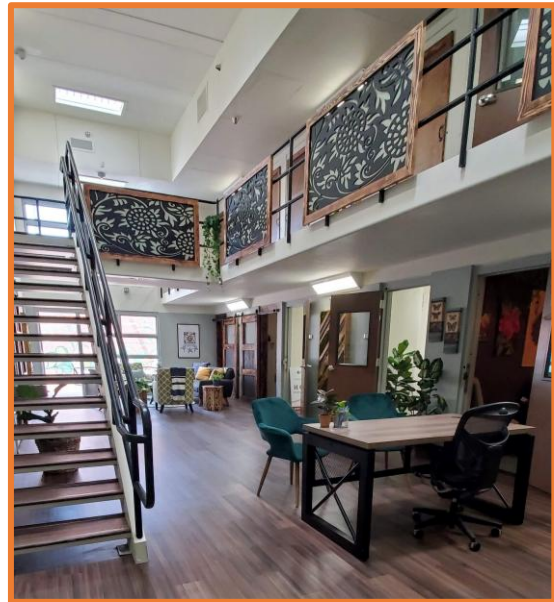
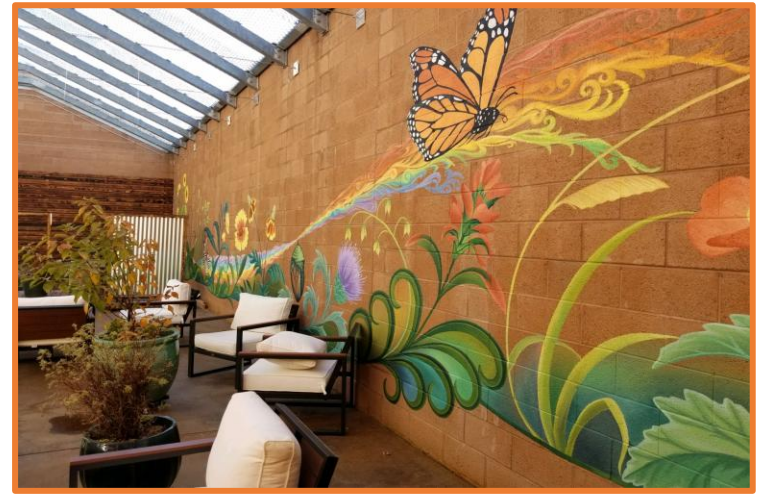
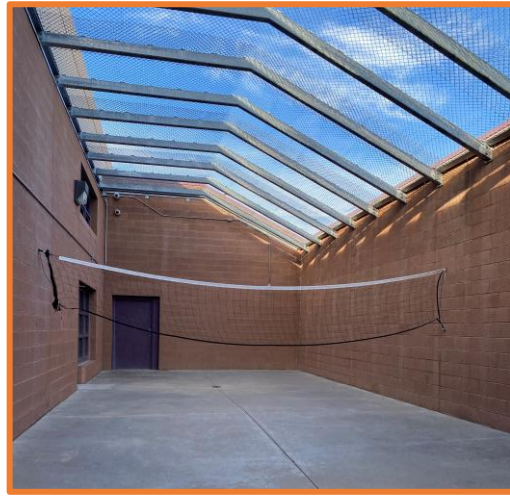
# HOPE RECEIVING CENTER



HOPE RECEIVING CENTER  
1111 N. 10TH AVENUE  
DENVER, CO 80202  
(303) 733-1111



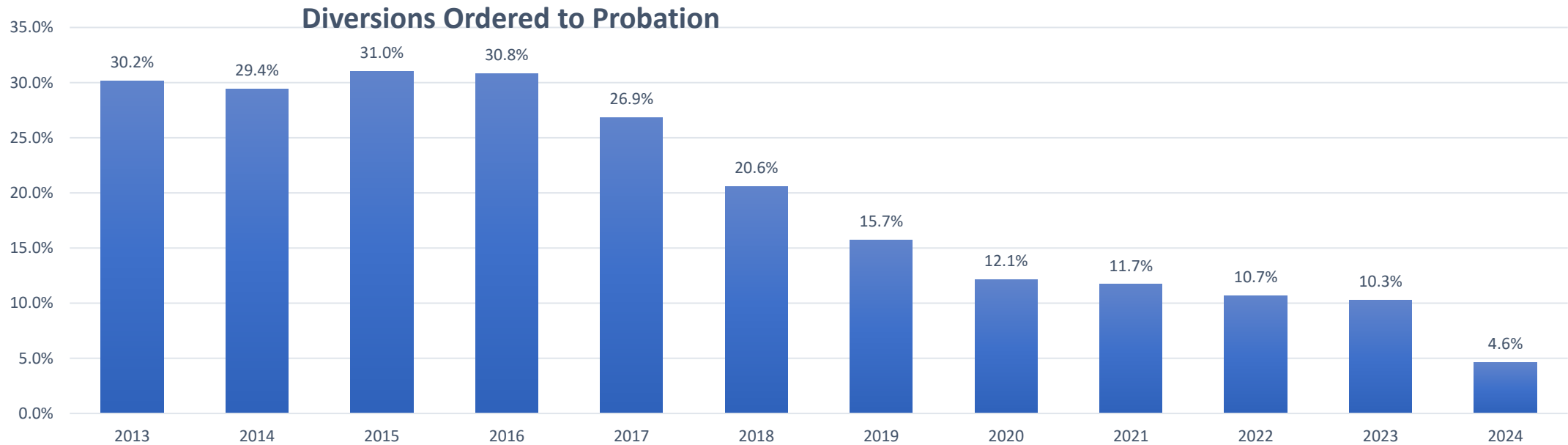
# Hope Center Before & After





400 youth served

# Juvenile Court Diversions



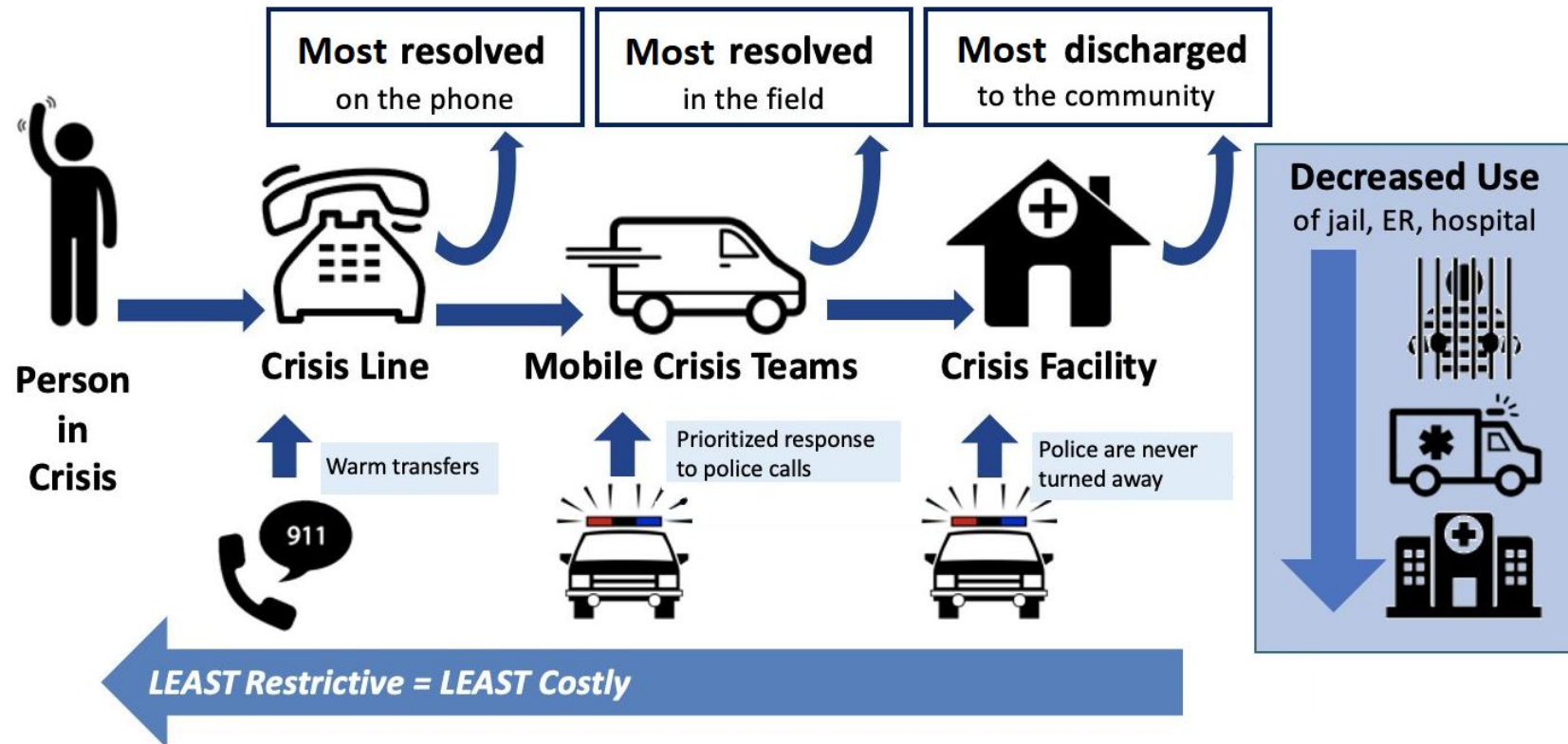




**care**

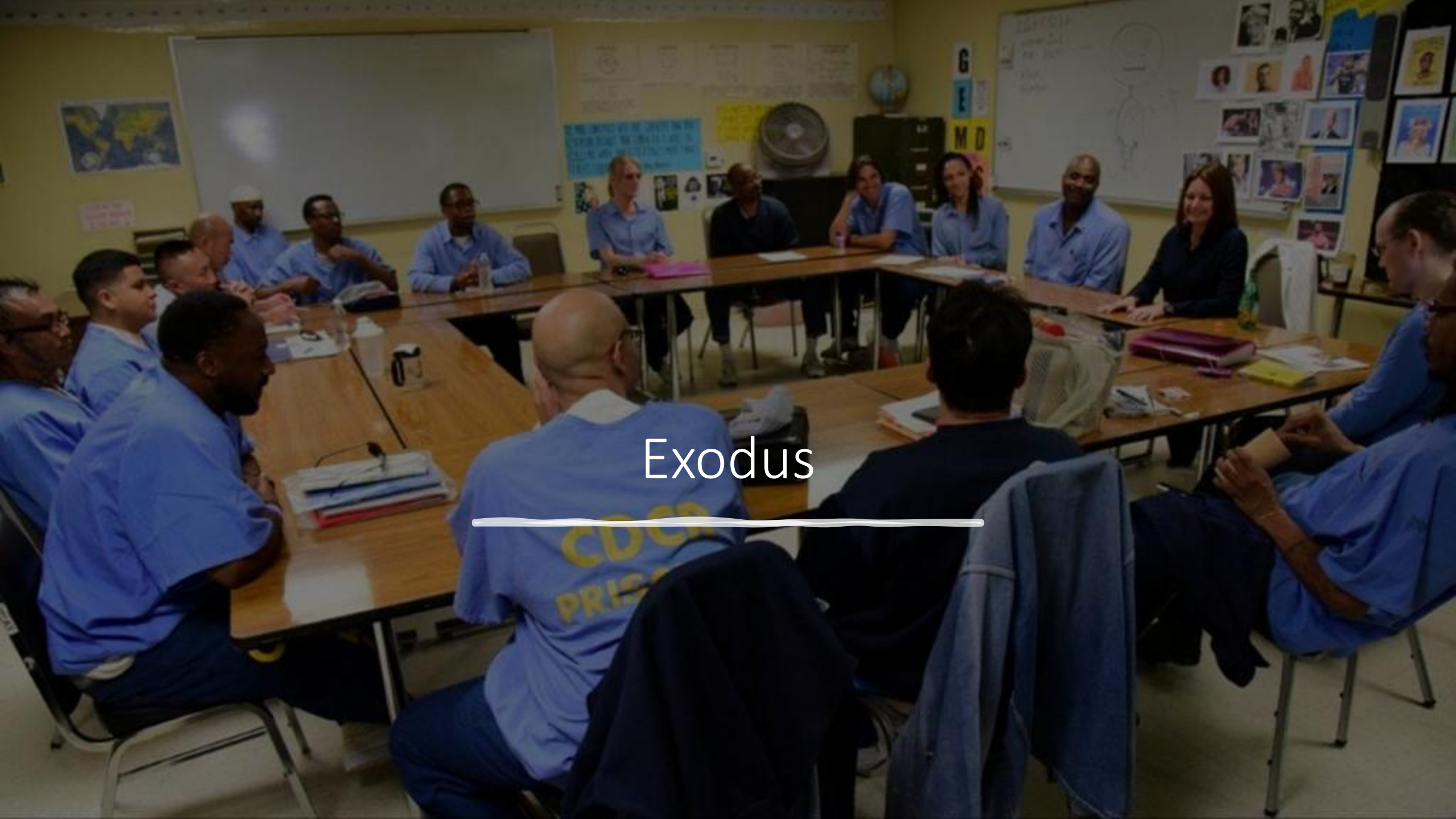
Community Alliance, Response & Engagement

# Arizona State Crisis System



## Adapted From:

Balfour ME, Hahn Stephenson A, Winsky J, & Goldman ML (2020). Cops, Clinicians, or Both? *Collaborative Approaches to Responding to Behavioral Health Emergencies*. Alexandria, VA: National Association of State Mental Health Program Directors. <https://www.nasmhpd.org/sites/default/files/2020paper11.pdf>



# Exodus

---





# **Coconino County Health and Human Services**

## **PATHWAYS TO COMMUNITY**

*Provides re-entry support services for individuals leaving the Coconino County Jail.*

# Pathways

TO COMMUNITY



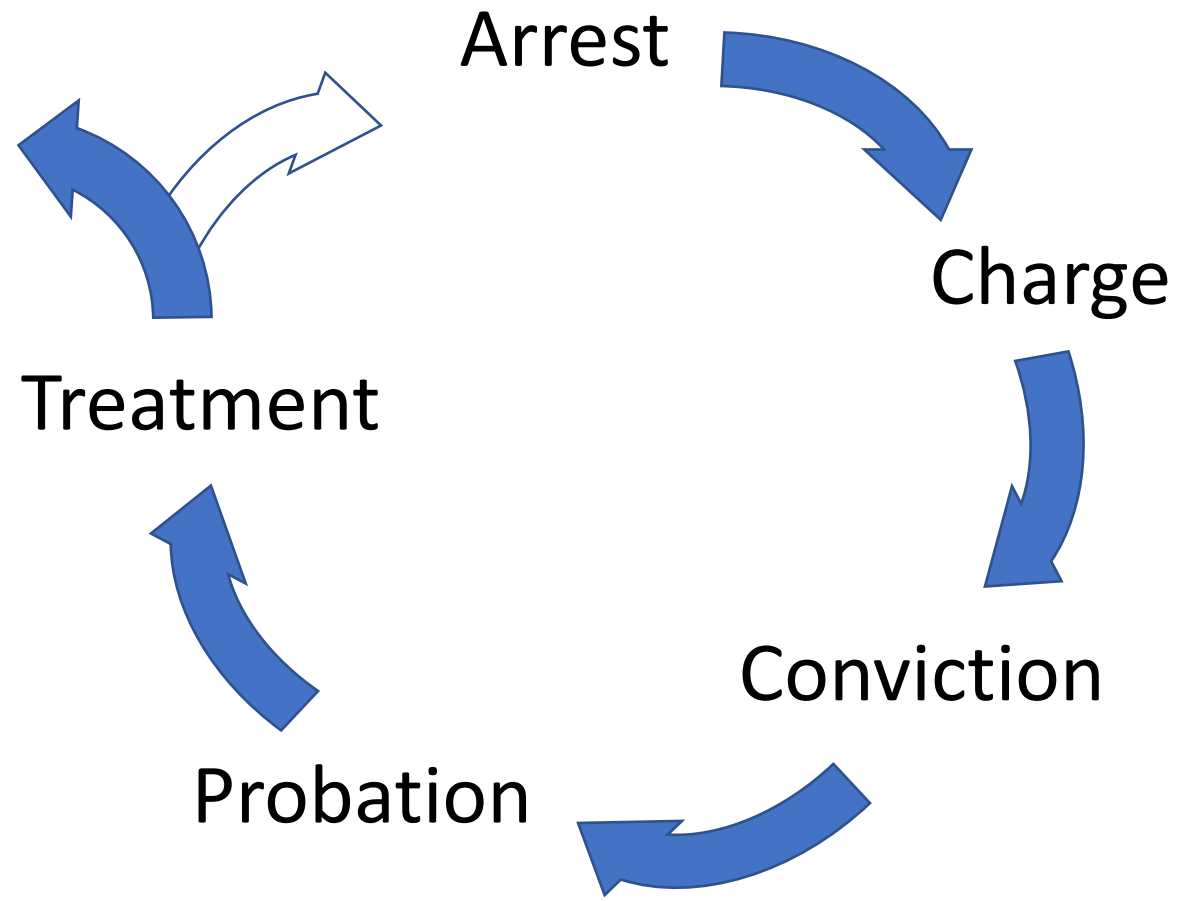


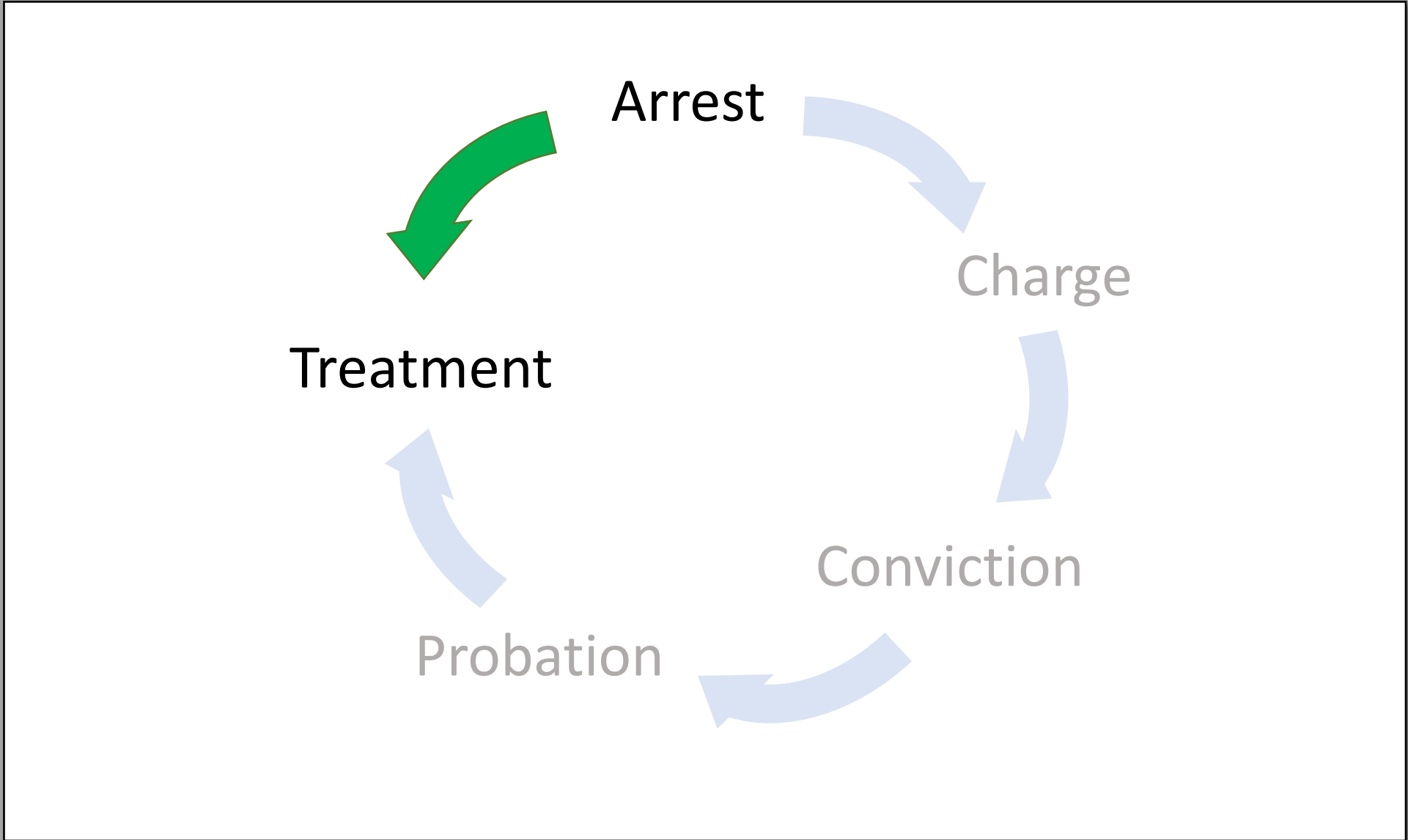


 **COCONINO**  
COUNTY ARIZONA  
Health & Human Services

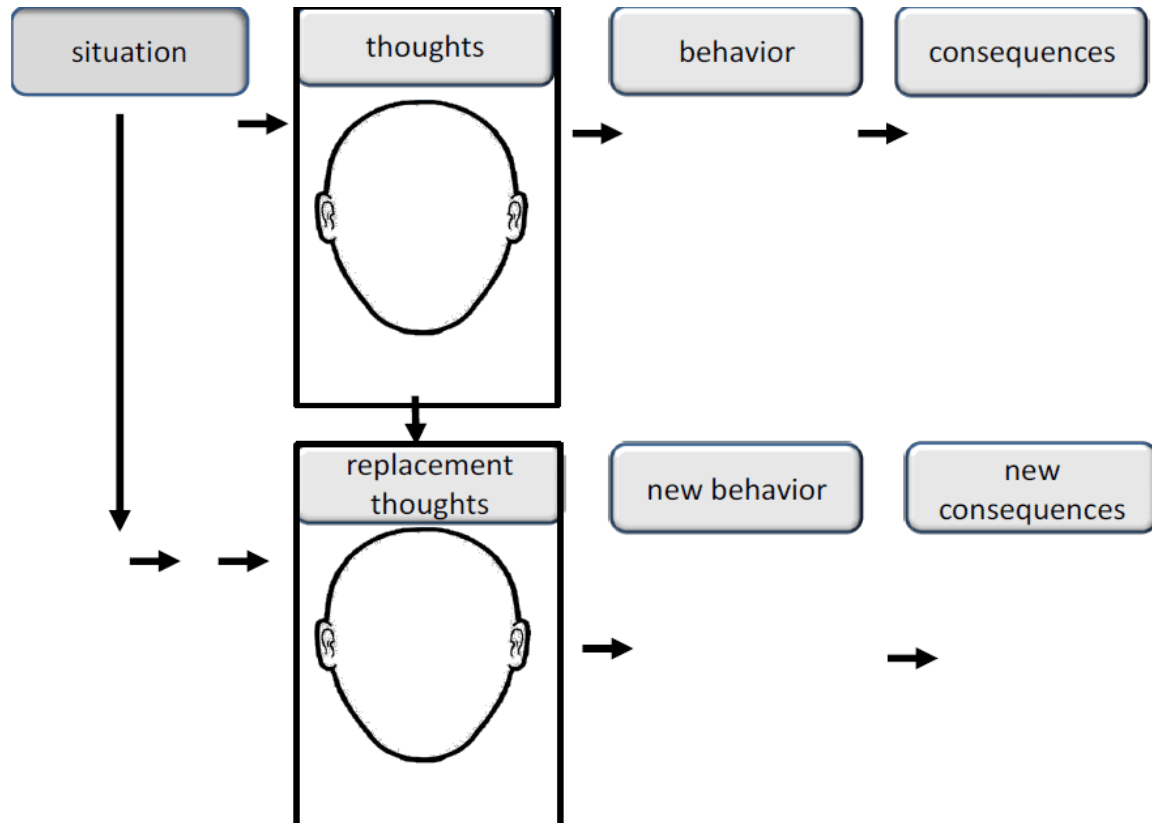
# Pathways Diversion Program







# Probation as Agents of Change



# What Questions Does the Risk-Needs-Responsivity Model Ask?









# Superior Court

## Problem-Solving Courts

- Recovery Court
- Mental Health Court
- Veterans' Treatment Court
- Consolidated Competency Court
- Revocation Court
- Integrated Family Court
- Conciliation Court
- Juvenile Court Services
- Restitution Court





# Limited Jurisdiction Treatment Courts

- Flagstaff Municipal Court
  - Mental Health Court
  - Veterans' Treatment Court
- Flagstaff Justice Court
  - Mental Health Court
- Page Justice Court
  - Drug Court
- Page Municipal Court
  - Drug Court
  - Domestic Violence Court



Easiest point to exit a river . . .





Questions?