

Water Services

March 24th, 2026



Water Capital Update





Wildcat Interceptor



In construction – 1700 of the total 5450 lf of pipe installed





Rio de Flag Solids Handling



**Design at 60% for the
new Sludge Drying
Facility**

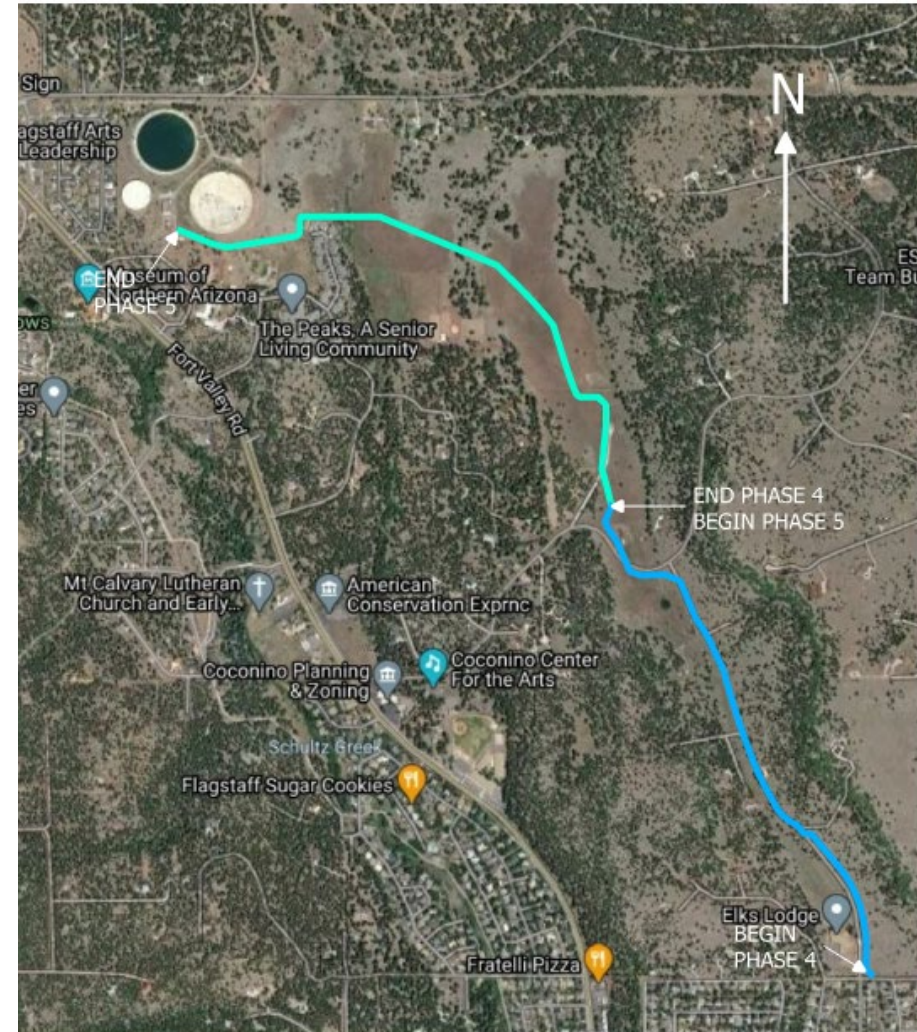




Switzer Phase 5

Final phase of pipeline

- Working on 90% plans, legal descriptions and land acquisition



Phase 4 (5200 LF)
Phase 5 (5800 LF)

0 750 1500 ft



Lake Mary Sedimentation Basins

Two 1-million gallon basins to be completely renovated





Lake Mary Raw Water Pipeline

5 Miles of 1963 27" CRBWSC pipe to be completely replaced





Fort Tuthill Recreation Area Well #2

2nd well drilled at Fort Tuthill – Pumphouse mods required





Reclaimed Water Bottleneck

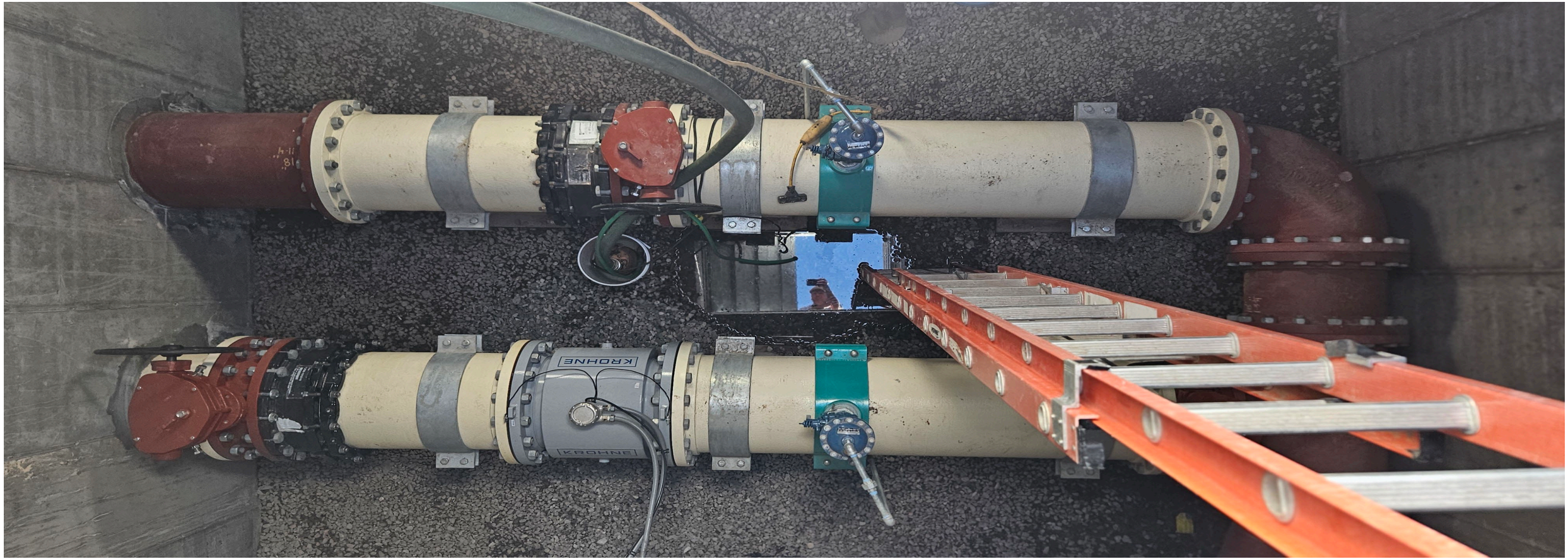
Replacement of 1.2 miles of under-sized Reclaimed Waterline w new 20"





Lake Mary Meter & Vault Replacement

- Meter replaced, vault 1/3 in progress, leak discovered under pumphouse
- 80% Complete





NAU Large Meter #1-100% Completed



- **IN PROGRESS:**
 - Warranty
- **COMPLETED:**
 - PO Closed
 - As-Builts Received
 - Finished on-time
 - Finished under budget
- **UP NEXT:**
 - 11-Month Walkthrough





Spruce Wash Water & Sewer (completed)



Replaced and Upsized over 240' of Water and Sewer Lines





Stormwater Utility



- Rio de Flag Flood Control Project
- Spruce Wash
- Santa Fe Lateral Drain
- Meade Lane Drainage Improvement
- Fanning Wash Suite of projects
- Spot Improvements – scupper repairs (x7), FUTs drainage repair near Lonetree





Spruce Wash Suite of Projects



- Scott Overton, Trevor Henry, and Julie Leid as project managers.
- \$26M bond for Spruce Wash flood mitigation
- Additional \$14M of grants and City contributions
- On schedule for completion this spring





Santa Fe Drainage Lateral

- Objective: convey the 100 – year flood from Mars Hill to the new RDF tunnel near City Hall (when the RDF is completed)
- Managed by Capital (Geneva Lanzetta)
- Partially funded by Army Corps Ei 595 grant (\$1.2M)
- 100% design
- Coordinating with Downtown Mile and RDF Project (extra complexity)





Meade Lane Drainage Project

- Objective: upscale street drainage, streets mill and overlay, aging water and wastewater replacement
- Managed by Capital (Geneva Lanzetta)
- Partially funded by FEMA HMGP grant (\$0.6M; pending due to HMGP program pause at national level in 2025)
- 100% design
- City funding: Stormwater, Water, Wastewater, Streets





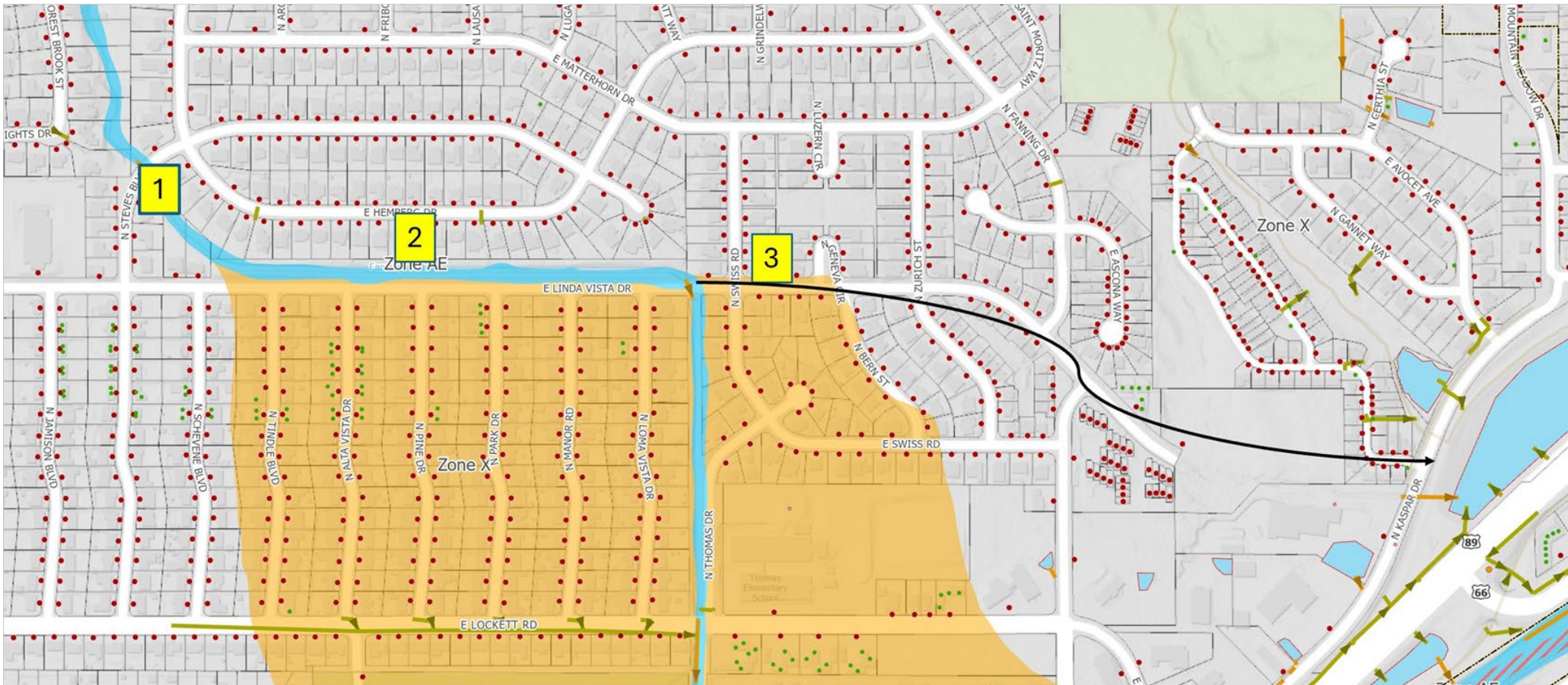
Fanning Wash Suite of Projects

- Three distinct projects to alleviate repetitive flooding in eastern Flagstaff.
- Fanning Wash Channel Improvement
 - 100% designed with a low bid by Eagle Mountain Construction
 - Chase McLeod as project manager
- Fanning Wash Diversion
 - 60% design, Ivey Coss as project manager
- Fanning Wash at Steve's Blvd culvert
 - 30% design



Map of Fanning Wash projects

- 1) Culvert at Steve's Blvd 2) Channel Improvement 3) Diversion





Fanning Wash Channel Improvements



- First of three Fanning Wash projects .
- Construction anticipated to start April 1 and be completed by July 1, 2026.
- Improves channel stability through armoring and increases conveyance capacity to accommodate the 100-year flow.



Stormwater Spot Improvements

2025-2026

- Sinclair Wash FUTs culvert replacements
- Scupper replacements (bundle, 7 locations)

2026-2027 (planned)

- Phoenix Sunshine Mission – BNSF puddle drain improvement
- Smokerise Neighborhood localized improvement



Rio de Flag Flood Control Project



Scope

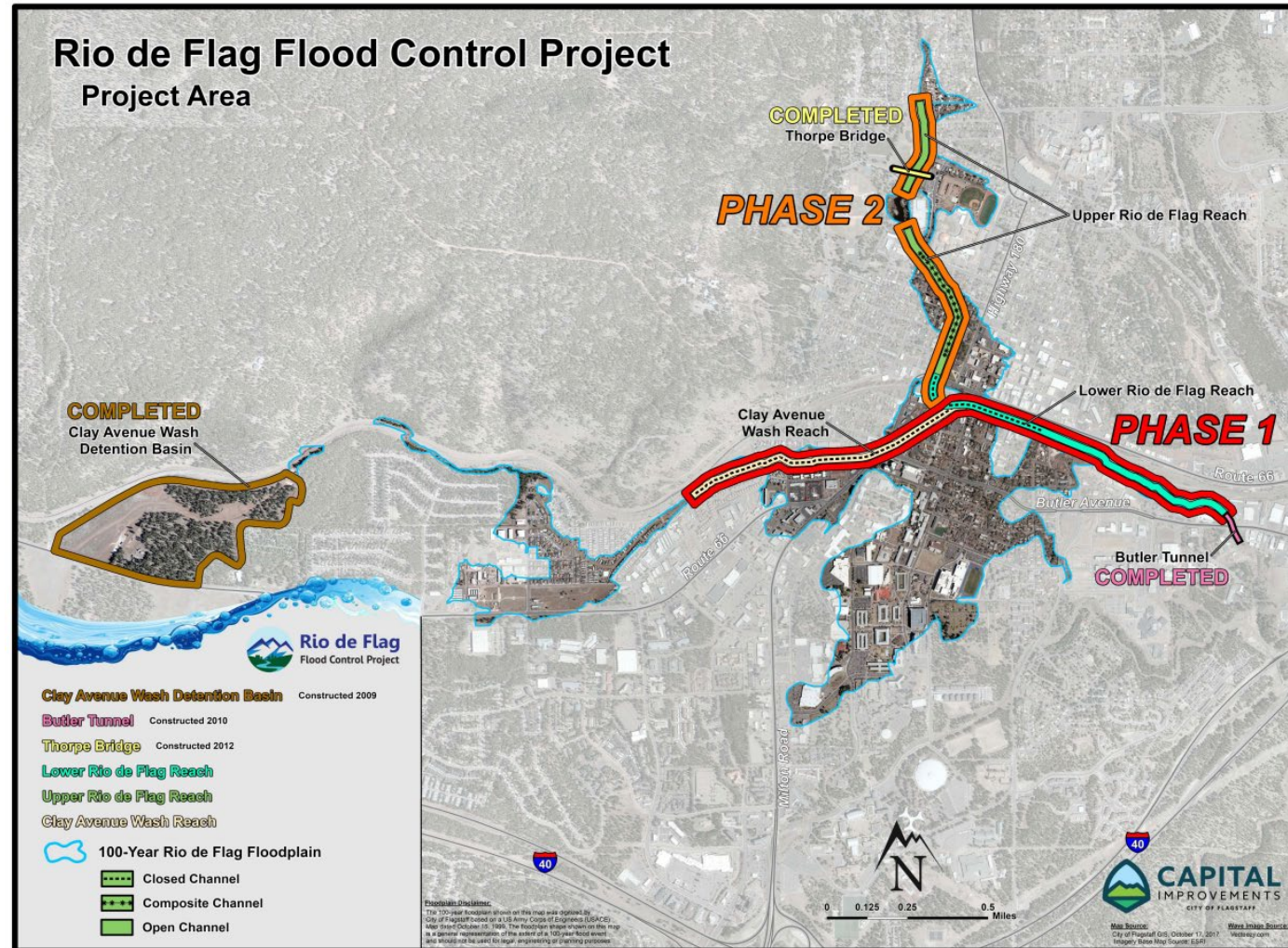
- Channelizes and reduces 100-year floodplain through central Flagstaff
- Open channels and underground box culverts

Total Project Cost Estimate \$266M

- Cost Share
USACE 65%
City 35%

Schedule

- Design 95% complete
- Construction of Phase 4 - Lower Reach anticipated for Spring 2027





NAU Large Meter #1-100% Completed



- **IN PROGRESS:**
 - Warranty
- **COMPLETED:**
 - PO Closed
 - As-Builts Received
 - Finished on-time
 - Finished under budget
- **UP NEXT:**
 - 11-Month Walkthrough





Spruce Wash Water & Sewer (completed)



Replaced and Upsized over 240' of Water and Sewer Lines



Questions?

