



Solid Waste Update

Agenda



Solid Waste
Update

Sustainability
Update

Solid Waste Rate Study



Rate Study Progress



- Consultant selection process has begun
 - Scope of work is being developed
 - Vendor interviews and peer cities
- All Solid Waste programs in review
- Focused working groups
 - Sustainability
 - Management Services
 - Public Works
- Key benchmarks/expectations are being established
 - Future council discussion
 - Public feedback
 - Industry business practices

Programs for Review

- Collections
 - Commercial
 - Residential
 - Hoist and Haul
 - Bulk Trash
 - Recycling
- Landfill
 - Hazardous Product Center
 - Landfill Operations
 - Landfill Capital Program



Curbside Glass Pick up



Transition Plan



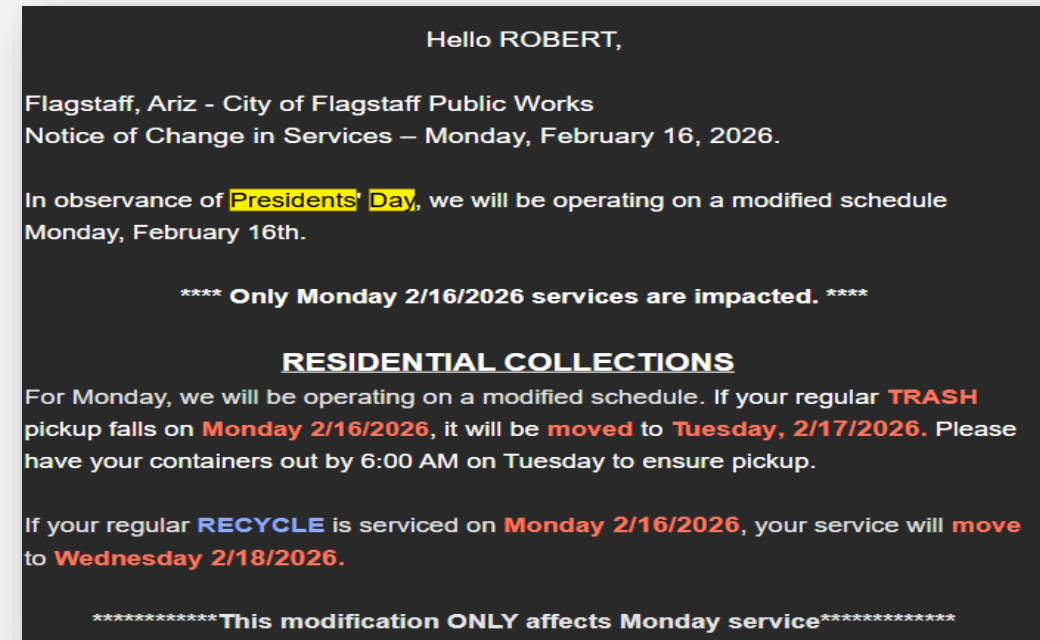
- Transition from curbside glass collections to public drop off
- Community Communications plan developed
- Targeted communications/credit for those currently receiving the service



Communications Plan



- Focused and targeted communications plan through social media and communication tools.
- Utilizing Constant Contact, we will send out an email to the current residential glass customers.
- We will also send out a letter to those customers that cannot be reached via email.



Operational Changes

- July 1st, 2026, is the recommended day to end curbside glass services.
- Notify customers in May, cancel billing on June 1st, 2026.
- Drop off locations on website.
 - Map posted on website.
- Flyers made and will be at locations around the city.





- All colors of glass are accepted.
- Only place glass in glass bins **(no plastic bags or other containers)**.
- Do not leave other recyclable materials or household trash next to the glass bins.
- Glass should not be placed in the regular large curb-side recycle container.

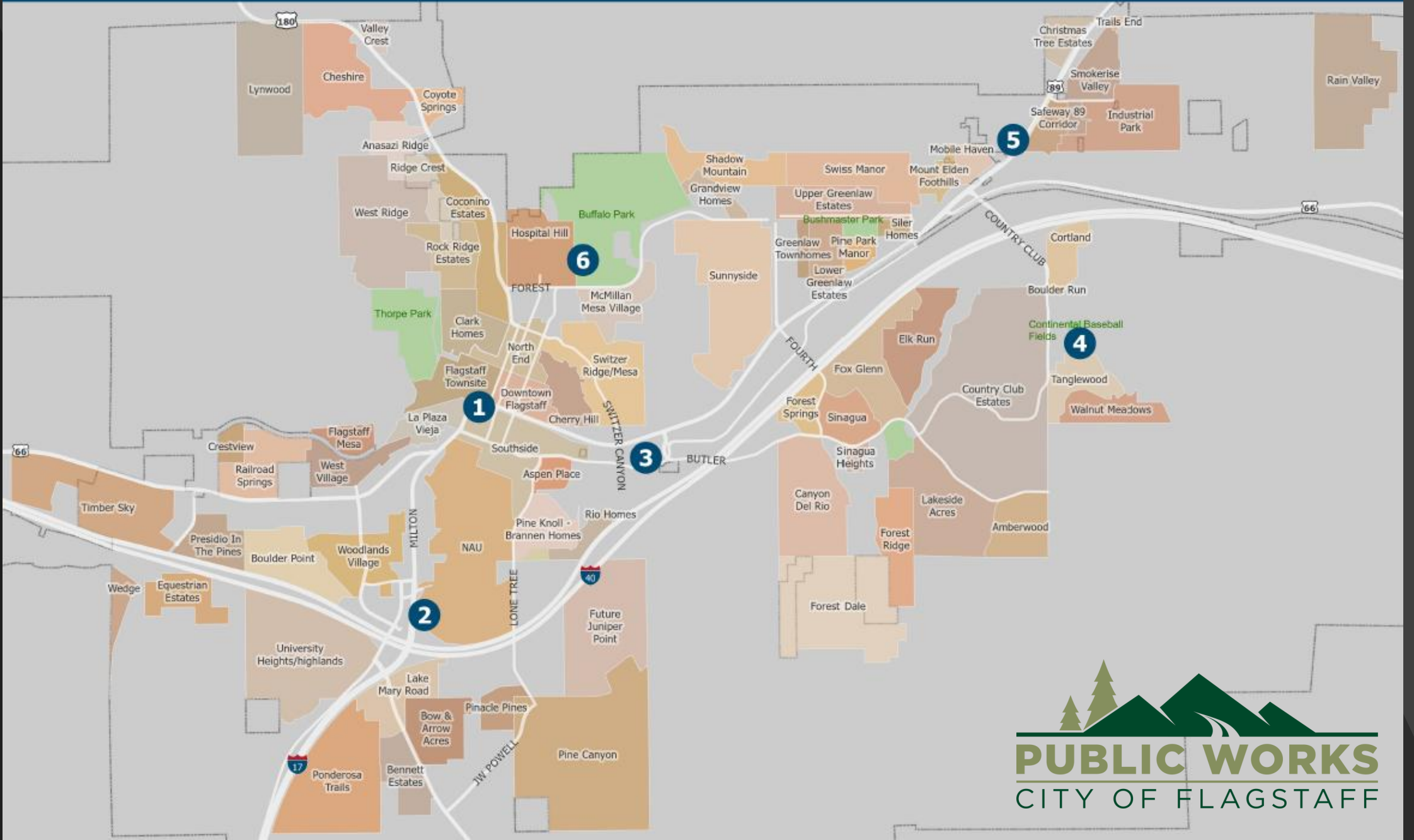
Glass Drop-off Locations

The following glass drop-off locations are available for City of Flagstaff residents:

	Location	Details
1	West Phoenix	116 W Phoenix Avenue., S Beaver Street. Turn right on Phoenix Avenue. From South Beaver Street, turn right on Phoenix Avenue. The bin is located behind the bus transfer station in the northwest corner of the public parking lot.
2	Northern Arizona University	On Pine Knoll Drive. The bin is located in parking lot P62B, in the southwest corner, near the disc golf course.
3	City of Flagstaff Recycling Transfer Facility	1800 E Butler Ave. The bin is located in the parking lot of the facility. Open to the public from 9 AM - 3 PM M-F. Closed on Saturdays and Sundays.
4	Continental Little League Field Parking Lot	Turn east off of Country Club Drive onto Old Walnut Canyon Road. The field will be on the left. The bin is located on the east side of the parking lot.
5	East Marketplace Dr and Research Dr	Located at the end of the road at East Marketplace Drive and West Research Drive by the entrance to Peak Ranger Station
6	Jay Lively Activity Center	1650 North Turquoise Dr. Southwest side of the complex parking lot closest to Turquoise Drive

Coconino County residents can drop off glass at the [Cinder Lake Landfill](#).

Glass Drop-off Locations



Waste Prevention Strategic Plan

Presentation by

Cheresa Taing

Waste Prevention Specialist

Sustainability Division



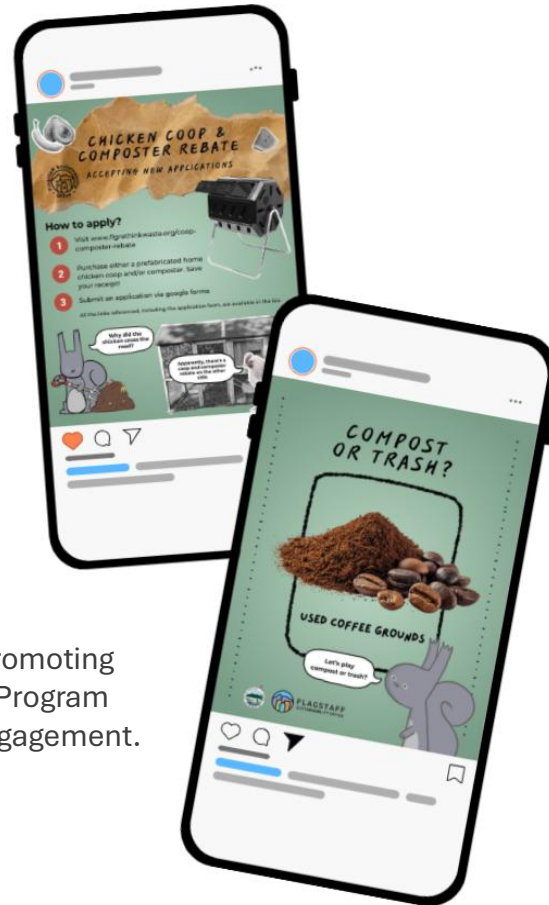
Education & Outreach

Helping Residents Waste Less and Recycle Right



Community Engagement Strategies

- "Where Your Recycling Actually Goes"
- "Wishcycling: The Contamination Problem"
- "Zero Waste: Recycling is the Last Step"



Photos show outreach campaigns promoting services like the Composter Rebate Program and using gamified tools to boost engagement.

Outreach Channels:

- Social media & e-newsletters
- Radio segments
- Community presentations & tabling
- Recycle by City alerts & emails (coordinated with Solid Waste for consistent updates)

Transparency & Data

- Track pathway of a single recyclable item
- Use contamination data to inform outreach
- Present data on greenhouse gas emissions

Events & Services

Extending the Life of Materials and Reducing Landfill Disposal



Repair & Reuse

- Fix-It Clinics
- Donate Don't Ditch

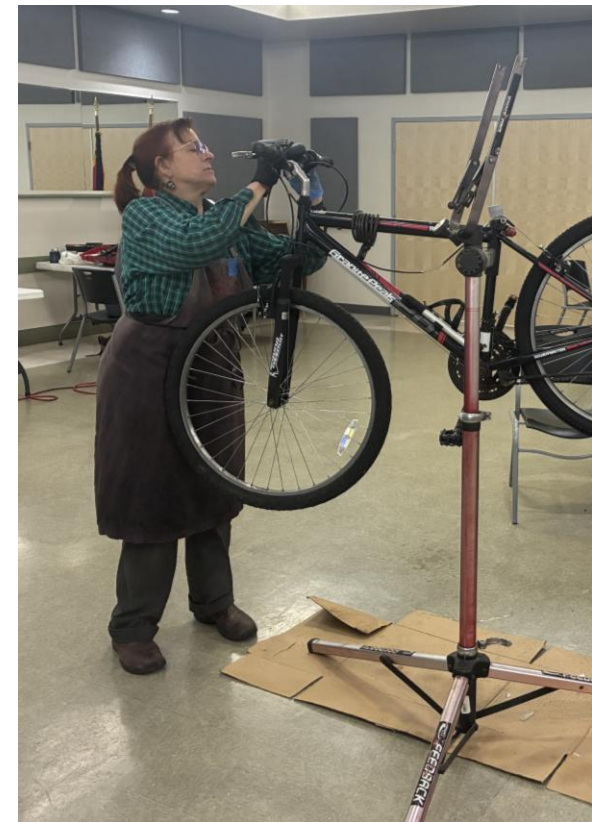
Composting

- Residential Food Scrap Drop-Off Program
- Treecycling & Pumpkin Drop-Off
- Composter Rebate Program

Responsible Disposal

- Drop-Off Day events

Photos show neighbors repairing items together and teaching youth how they work



Partnerships & Alignment

Working Together to Multiply Waste Reduction Efforts



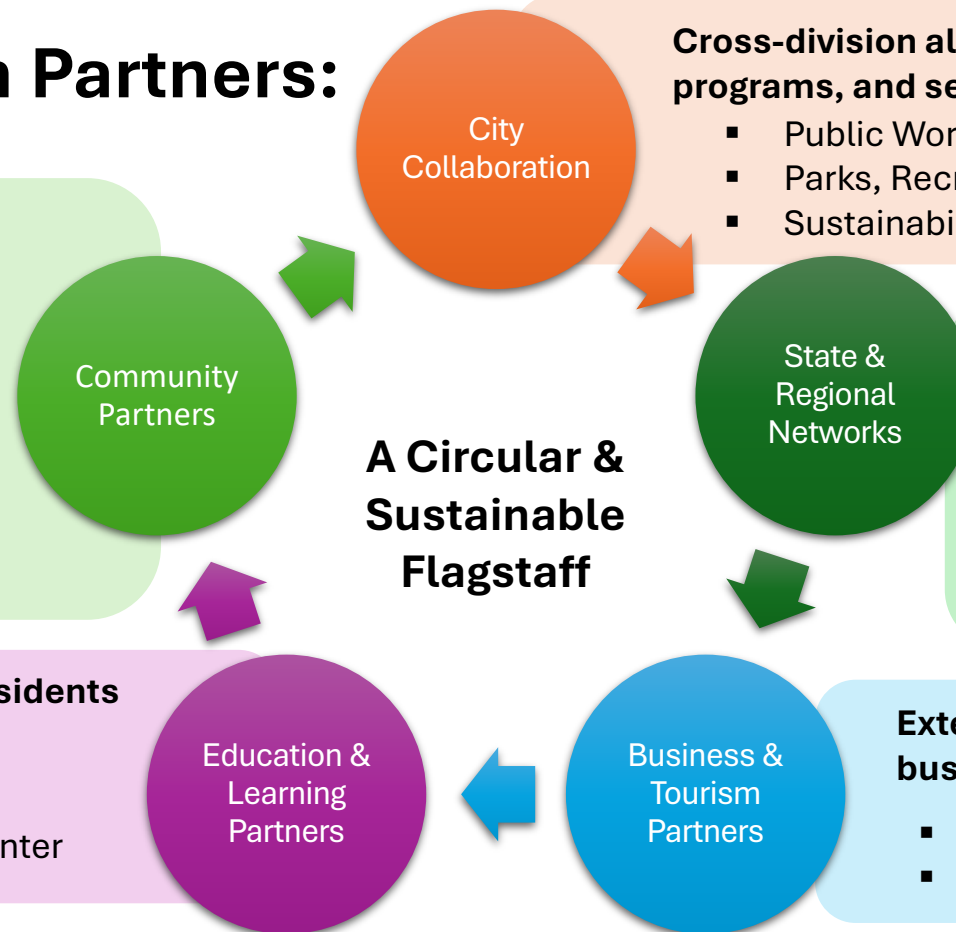
Key Waste Prevention Partners:

Delivering repair, reuse, and composting initiatives through local organizations:

- Compost Crowd
- Restoration Soils
- Coco-op Makerspace

Community knowledge and empowering residents through environmental education:

- Azulita Project
- Willow Bend Environmental Education Center



Cross-division alignment on messaging, programs, and services:

- Public Works
- Parks, Recreation, Open Space and Events
- Sustainability Commission

Best practices and strengthening programs through regional collaborations:

- Circular Arizona
- Arizona Forward
- Arizona Department of Environmental Quality
- Urban Sustainability Directors Network

Extending sustainability messaging to businesses, visitors, and downtown spaces:

- Downtown Business Alliance
- Discover Flagstaff

Zero Waste Ambassadors

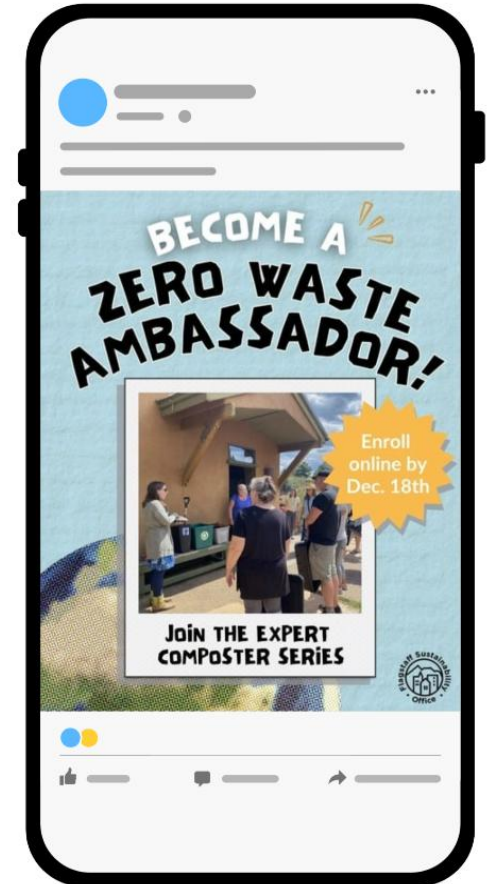
Expanding our Reach Through Community Leadership



FY27 Strategic Plan

- Relaunch Zero Waste Ambassadors (formerly Master Recyclers)
- Train community members to lead change
- Support education, events, and outreach
- Resource library for residents and businesses

Photo to the right showcases past outreach for Zero Waste Ambassador program.



Questions / Comments