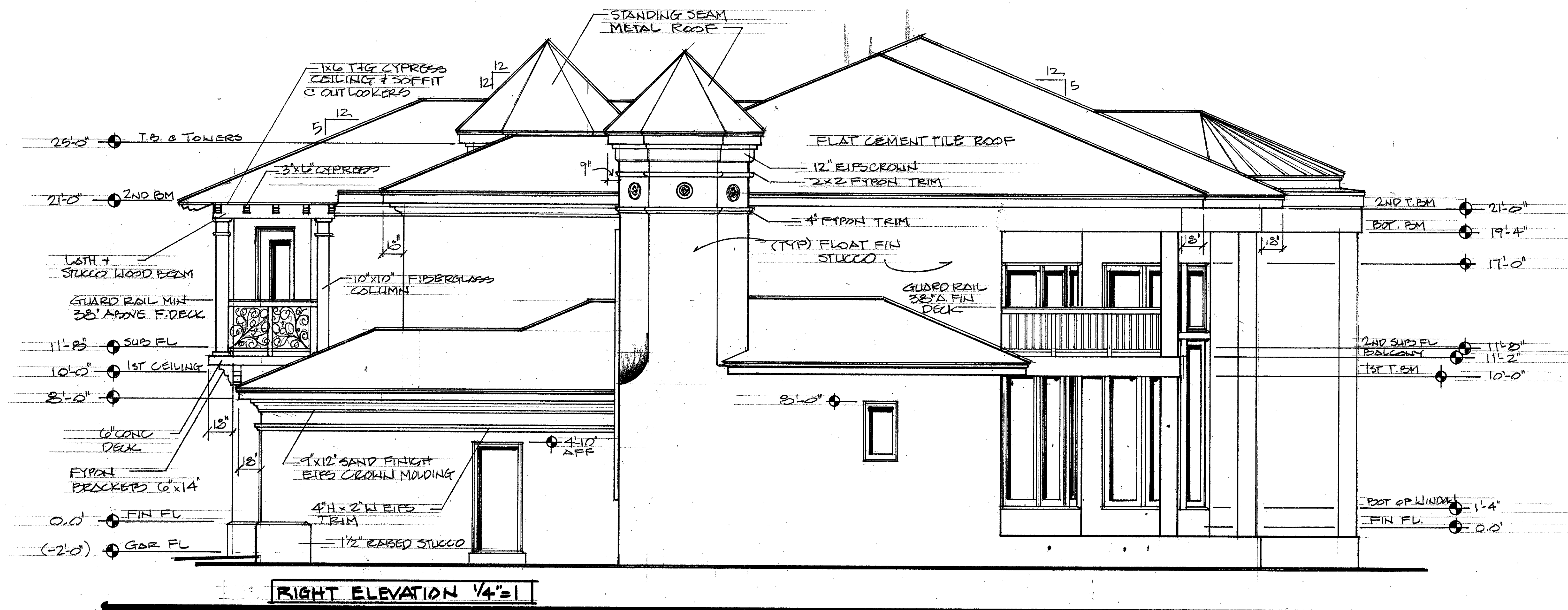


21'-0"
 19'-4"
 17'-0"
 12'-8"
 12'-4"
 1'-4"
 0'-0" FIN. FL
 (-6")

21'-0"
 19'-4"
 11'-8"
 11'-2"
 6'-0" AFF
 FIN FL
 (-2'-0") BFF

LEFT ELEVATION: 1/4"=1'





FLAT BERMUDA CEMENT TILE
ON 90# HOT MOP UNDERLAYMENT
ON 30# FELT TIN TO @ PER CODE

STANDING SEAM
METAL ROOF

STANDING SEAM
METAL ROOF

LATH + STUCCO PASTO CEILING'S
W CONTROL JOINTS @ 150# MAX

FORM + POUR CONCT'G
W FLOAT FIN STUCCO

16" DIA CONC FILLER CMU
W (4) #6 VERT + #3 HORIZ
@ 18" OC
FLOAT FIN STUCCO

2ND BEAM - 21'-0"

BOT PATIO BEAM - 19'-4"

TOP OF WINDOW - 17'-0"

12'-8" / 12'-4" AFF

BOT OF WINDOW - 1'-4"
FIN FLOOR - 0'-0"
PATIO - (-6" DEF)

25'-0"

21'-0"

11'-8" 2ND SUB FLOOR

10'-0" 1ST FL CLG

(IMP)
FLOAT FIN
STUCCO

6" CONC. DECK

8'-2"

ALUMINUM
GUARD RAIL
MIN 36" HIGH
& FIN DECK

17'-0"
FLOAT FIN
STUCCO

12'-0"

10'-0"

REAR ELEVATION 1/4" = 1'