

ACCEPTANCE OF MORTGAGEE

I, J.P. Graf, Mortgagee, do hereby accept the attached plat of THUMB POINT and the foregoing Dedication of Streets, Alleys and Utility Easements.

J.P. Graf
Mortgagee

Subscribed and Sworn to before me this 12 day of March, 1957.

James H. Cape
Notary Public State of Florida
at Fort Pierce, of Large

My Commission Expires: July 1, 1960

CERTIFICATE OF DEDICATION

STATE OF FLORIDA }
COUNTY OF ST. LUCIE }

We, J. Russell Eschland, Donna H. Cook, respectively as President and Secretary of ISLAND SHORES INC., a Florida Corporation, do hereby certify that said Corporation is the owner of the lands shown on this plat of THUMB POINT, a Subdivision located in the City of Fort Pierce, St. Lucie County, Florida and that said Corporation does hereby dedicate to the Public forever, all Streets, Alleys and Utility Easements, as shown thereon. And we do further certify that the Seal affixed hereto is the Official Seal of said Corporation, that we are the duly elected, qualified and acting Officers of said Corporation as aforesaid, and that the execution of this Certificate of Dedication is the act and deed of said Corporation.

WITNESSES:
J. Russell Eschland
President

Donna H. Cook
Secretary

Subscribed and Sworn to before me this 12 day of March, 1957.

James H. Cape
Notary Public State of Florida
at Fort Pierce, of Large

My Commission Expires: July 1, 1959

CERTIFICATE OF CLERK OF CIRCUIT COURT

STATE OF FLORIDA }
COUNTY OF ST. LUCIE }

I, CLERK of the Circuit Court of St. Lucie County, Florida, do hereby certify that I have examined this plat and that it complies in form with all the requirements of Chapter 177 Florida Statutes Annotated. This plat filed for record this 12 day of March, 1957, and recorded on Page 72 of Plat Book 10 in the office of the clerk of the Circuit Court of St. Lucie County, Florida.

W.C. Baggett
Clerk of Circuit Court of St. Lucie County, Florida

By: James H. Cape
Deputy Clerk

ENGINEER'S CERTIFICATE

STATE OF FLORIDA }
COUNTY OF ST. LUCIE }

I hereby certify that this plat is made from an actual survey made under my direction that it is a correct representation of the land platted, and permanent reference monuments have been placed or called for under Chapter 177, Florida Statutes Annotated.

Dated this 20 day of February, 1957.

Robert A. Register
State of Florida
Registered Engineer #2290
Registered Surveyor #733

CERTIFICATE OF APPROVAL

This is to certify that this plat has been approved by the Board of County Commissioners of St. Lucie County, Florida, but such approval have been placed on record to maintain any streets or roads shown thereon.

Dated this 12 day of March, 1957.

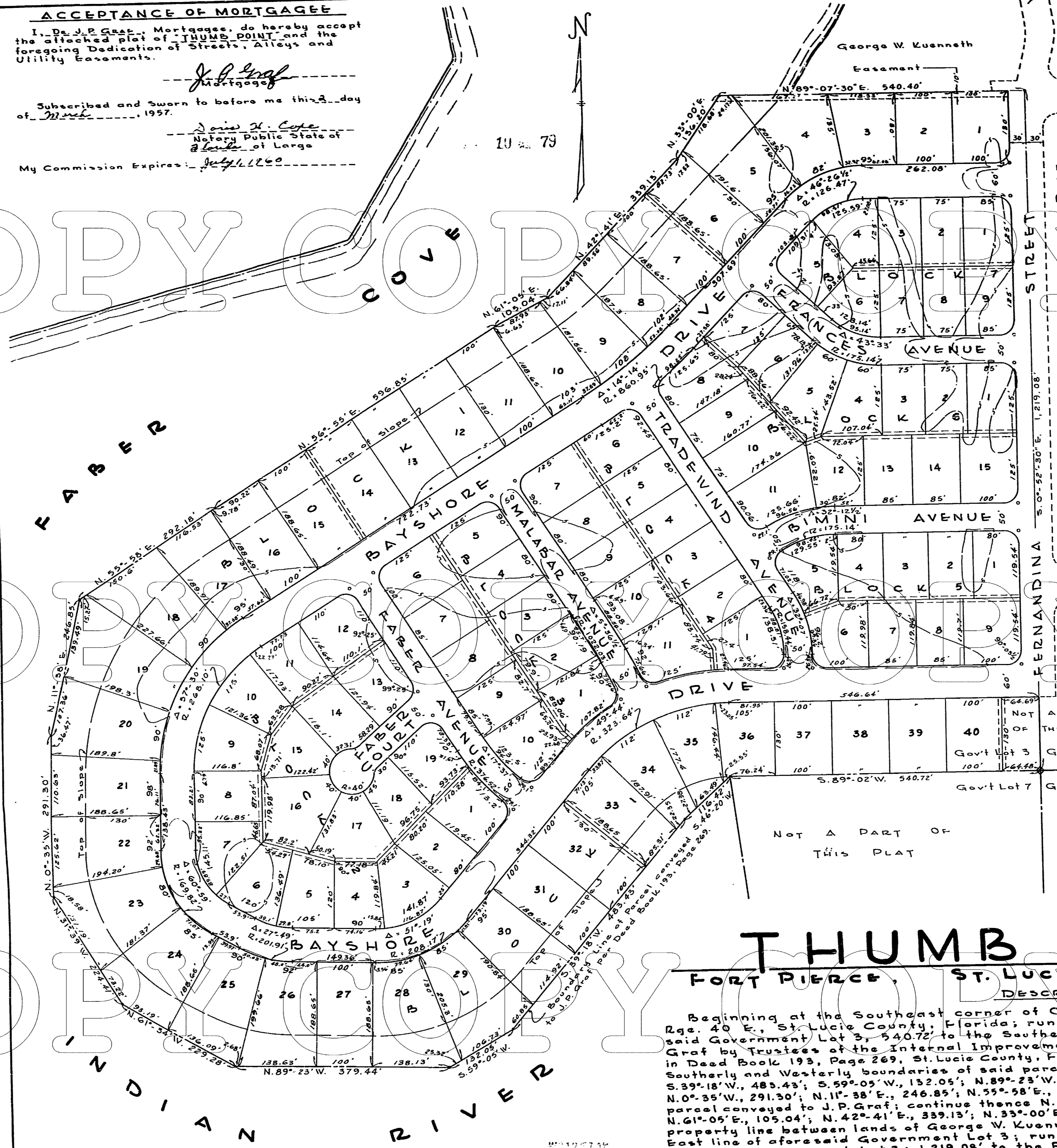
Oliver J. Sullivan
Chairman, Board of County Commissioners

CERTIFICATE OF APPROVAL

This is to certify that this plat has been approved by the City Commission of the City of Fort Pierce, St. Lucie County, Florida.

Dated this 25 day of February, 1957.

W.C. Baggett
City Manager



THUMB POINT
FORT PIERCE, ST. LUCIE COUNTY, FLORIDA

DESCRIPTION
Beginning at the Southeast corner of Government Lot 3, Section 1, Twp. 35 S., Rge. 40 E., St. Lucie County, Florida; run thence S. 89° 02' W., along the South line of said Government Lot 3, 540.72'; to the Southeast corner of parcel conveyed to J.P. Graf by Trustees of the Internal Improvement Fund of the State of Florida, as recorded in Deed Book 193, Page 269, St. Lucie County, Florida, Public Records; run thence along the southerly and westerly boundaries of said parcel conveyed to J.P. Graf: S. 46° 20' W., 116.42'; S. 89° 18' W., 485.43'; S. 59° 05' W., 152.05'; N. 89° 23' W., 379.44'; N. 61° 34' W., 229.28'; N. 51° 59' W., 224.41'; N. 0° 35' W., 291.30'; N. 11° 38' E., 246.85'; N. 55° 58' E., 140' to the Northwesterly corner of aforesaid parcel conveyed to J.P. Graf; continue thence N. 55° 58' E., 152.18'; thence N. 56° 55' E., 596.85'; parcel conveyed to J.P. Graf; continue thence N. 89° 07' 30" E., 540.40' along the East line of aforesaid Government Lot 3; run the S. 0° 52' 30" E., along the East line of aforesaid Government Lot 3; 1,219.08' to the Point of Beginning.

February 14, 1957. Scale: 1" = 100'

- NOTES:**
1. Permanent Reference Monuments shown thus:
 2. Contour Elevations shown refer to U.S.C. & G.S. Datum for M.S.L.
 3. Building Set-Back line 25' from R/W line on all Streets.
 4. Radii of Block Corners will be 25' except where noted; dimensions shown are to intersection of tangents.
 5. Utility Easements shown thus: Lot line Dimension from Lot line will be 6' unless otherwise noted.

ALTON A. REGISTER & ASSOCIATES
P.L.L.C.
FORT PIERCE, FLORIDA