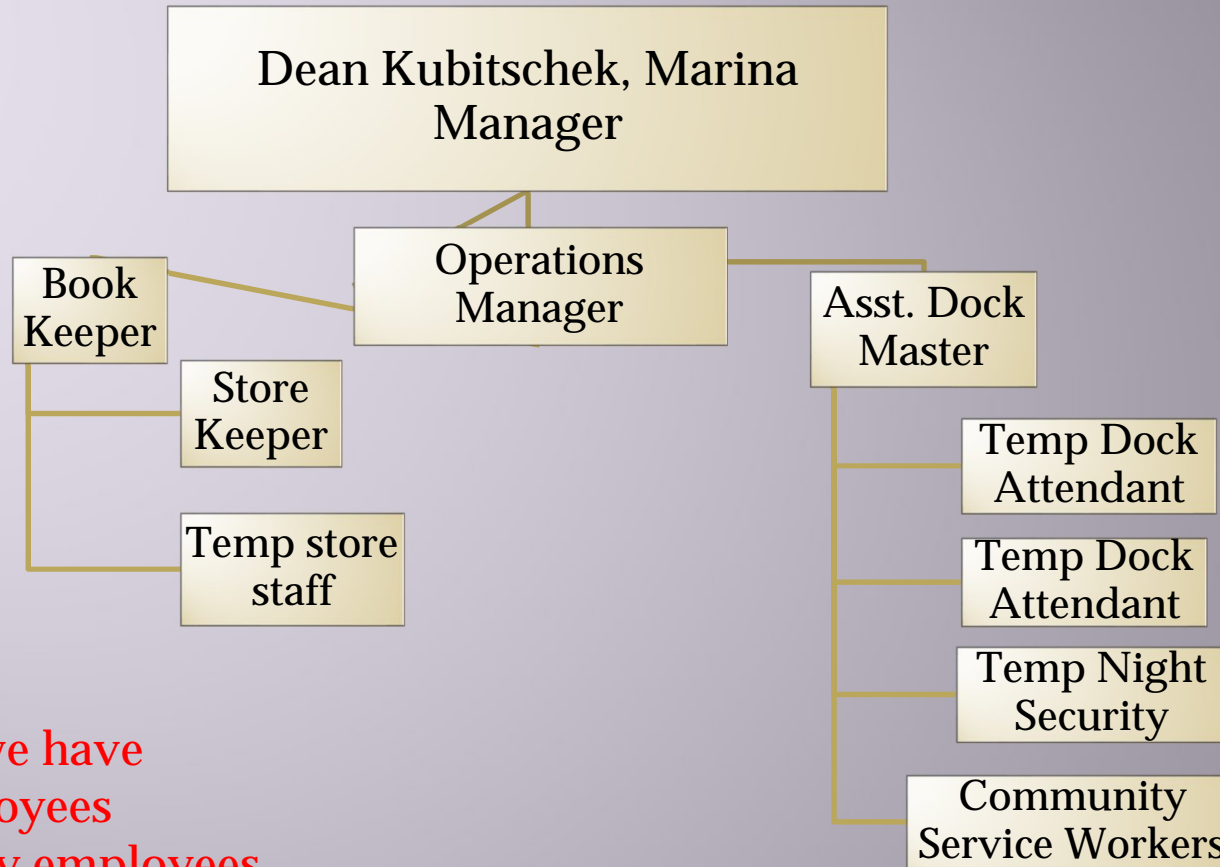




Strategic Planning Workshop

April 25, 2014

Presented by: Dean Kubitschek



Currently we have
 5 City employees
 4 Temporary employees

We operate two marinas
 with minimal staff
 365 days a year

#1 concern is my employees moral who are our customers. As managers we need to make sure our customers are taken care of. A cost of living increase allows them a piece of mind so we can achieve greater productivity from them at the work place.



MARINA AFTER REBUILDING

ACHIEVEMENTS

▣ Already Completed

- Dredging of new channel
- Constructed new barrier island for storm protection
- Replace fuel tank

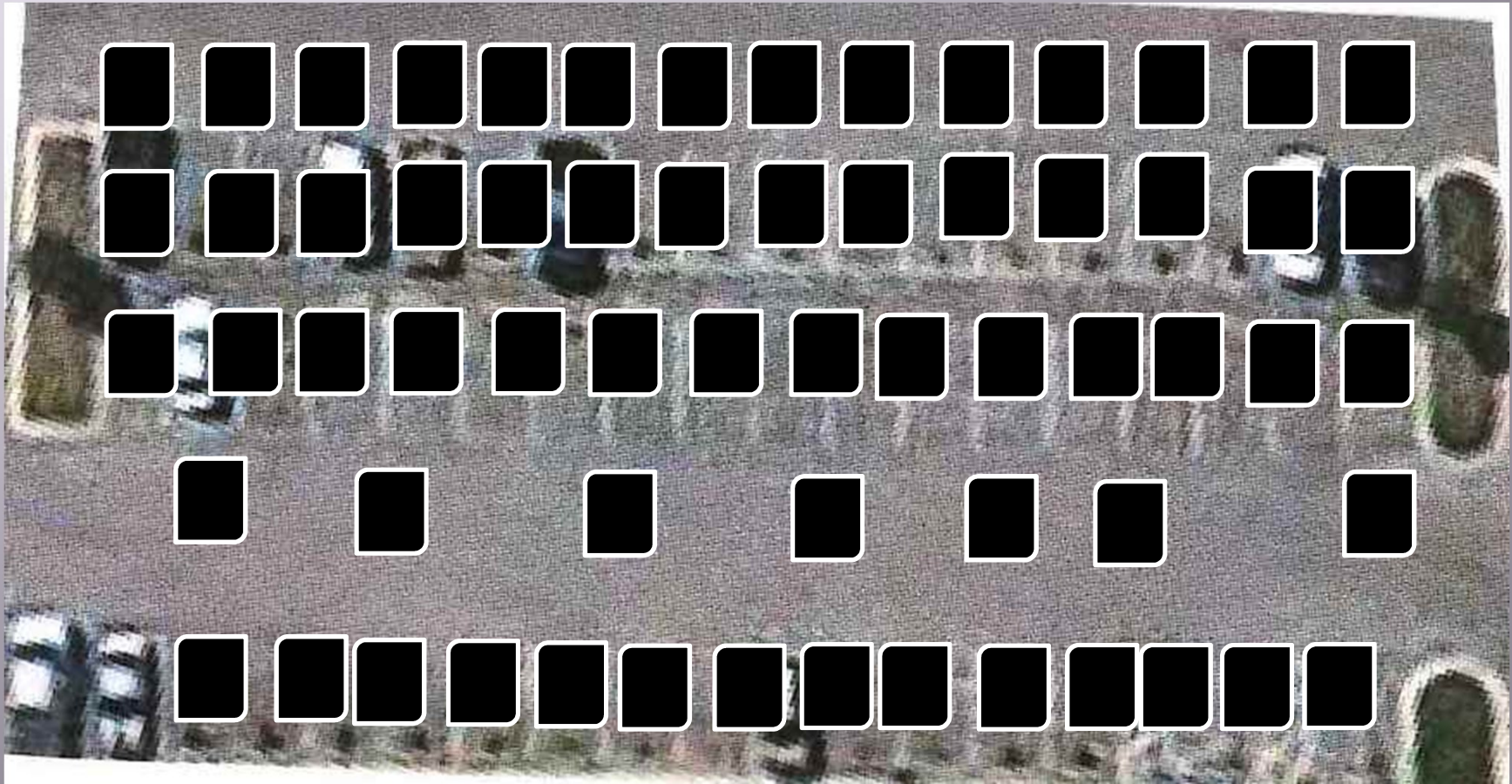
▣ In Process

- Dredging of Moore's Creek in May, 2014 will add approx. 19 more slips
- Rebuild of the marina floating docks
- New dock reservation and inventory program
- Security camera installation
- Proposed dingy dock area
- ATM Machine
- Web Cams
 - Marina
 - Old USCG Station
 - Inlet

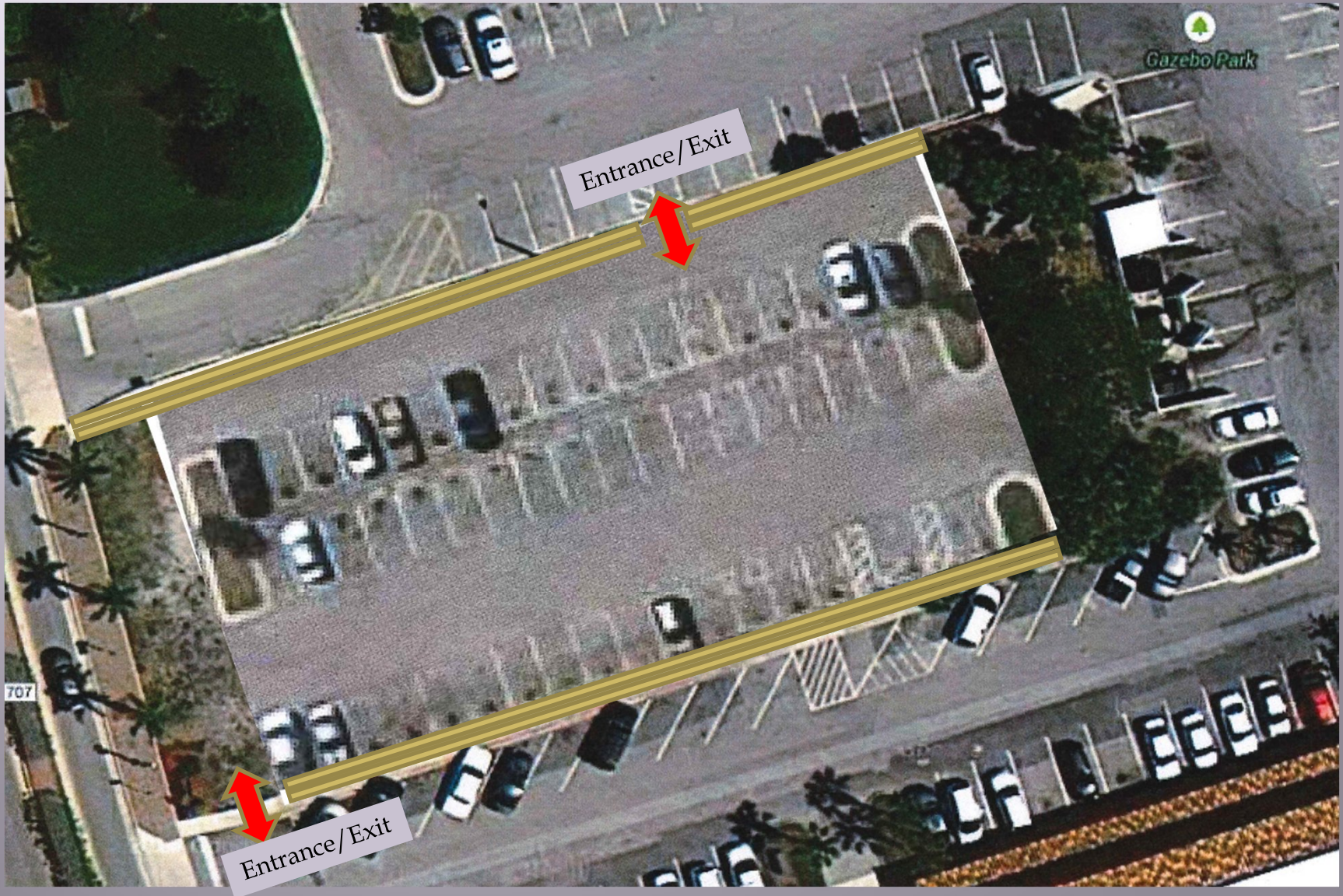
PARKING ISSUES



Parking lot can be utilized for Special Events without damaging any grass or expensive maintenance issues.



Open Parking



In Need of Public Transportation to Accommodate Our Visitors and Local Public Needs to allow access to the Water Front

Current bus stops



Proposed Additional Bus Stops

- City Hall / Parking Garage
- City Marina
- River Walk Center
- Harbor Isles
- Grocery Store and restaurants
- South Jetty Inlet - Beach
- Hotels
- Pelican Yacht Club
- Regional History Center/SLC Aquarium
- South Beach Causeway
- Avenue D Transfer Station



BOAT RAMPS



Fisherman's



Wharf

The boat ramps docks are in need of replacement or rebuilding due to age and corrosion



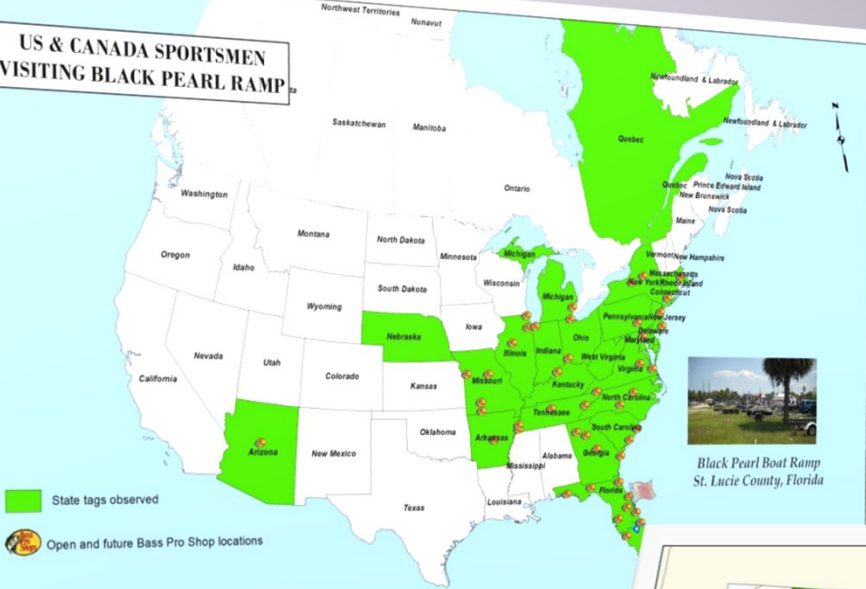
Possibility of enlarging Fisherman's Wharf boat ramp

STAN BLUM BOAT RAMPS



This is a perfect example of a modern boat ramp facility which is handicap compliant.

US & CANADA SPORTSMEN VISITING BLACK PEARL RAMP



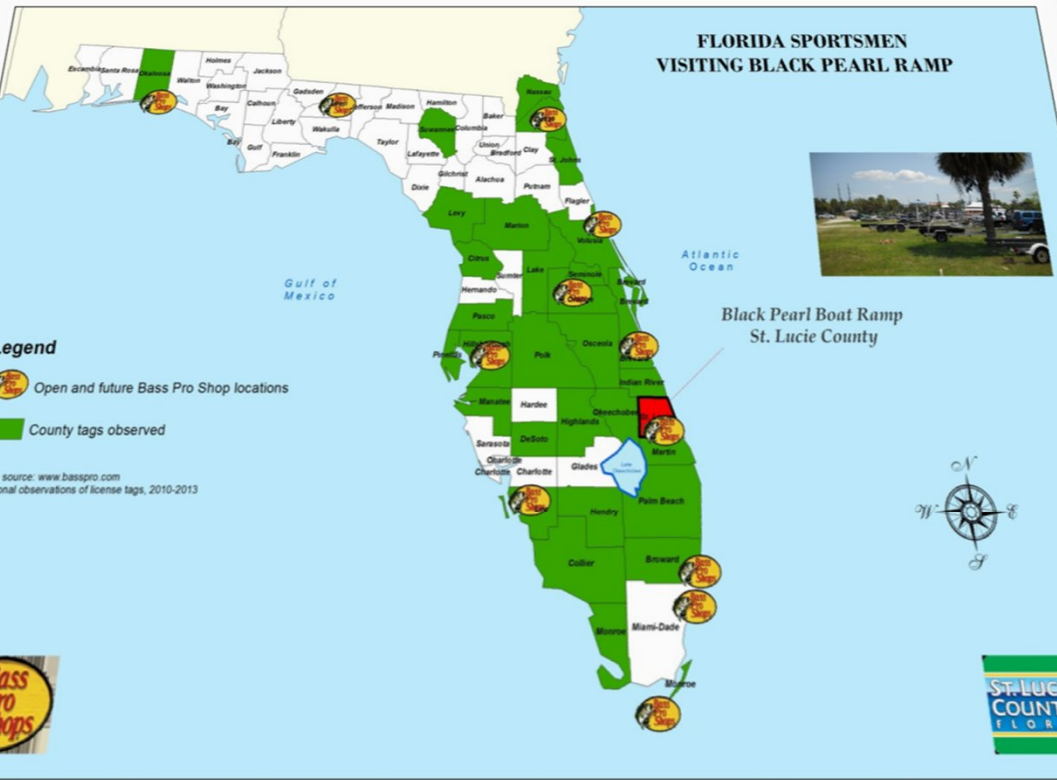
Black Pearl Boat Ramp
St. Lucie County, Florida

- State tags observed
- Open and future Bass Pro Shop locations



Data source: www.basspro.com
Personal observations of license tags, 2010-2013

FLORIDA SPORTSMEN VISITING BLACK PEARL RAMP



Black Pearl Boat Ramp
St. Lucie County

- Legend**
- Open and future Bass Pro Shop locations
 - County tags observed

Data source: www.basspro.com
Personal observations of license tags, 2010-2013



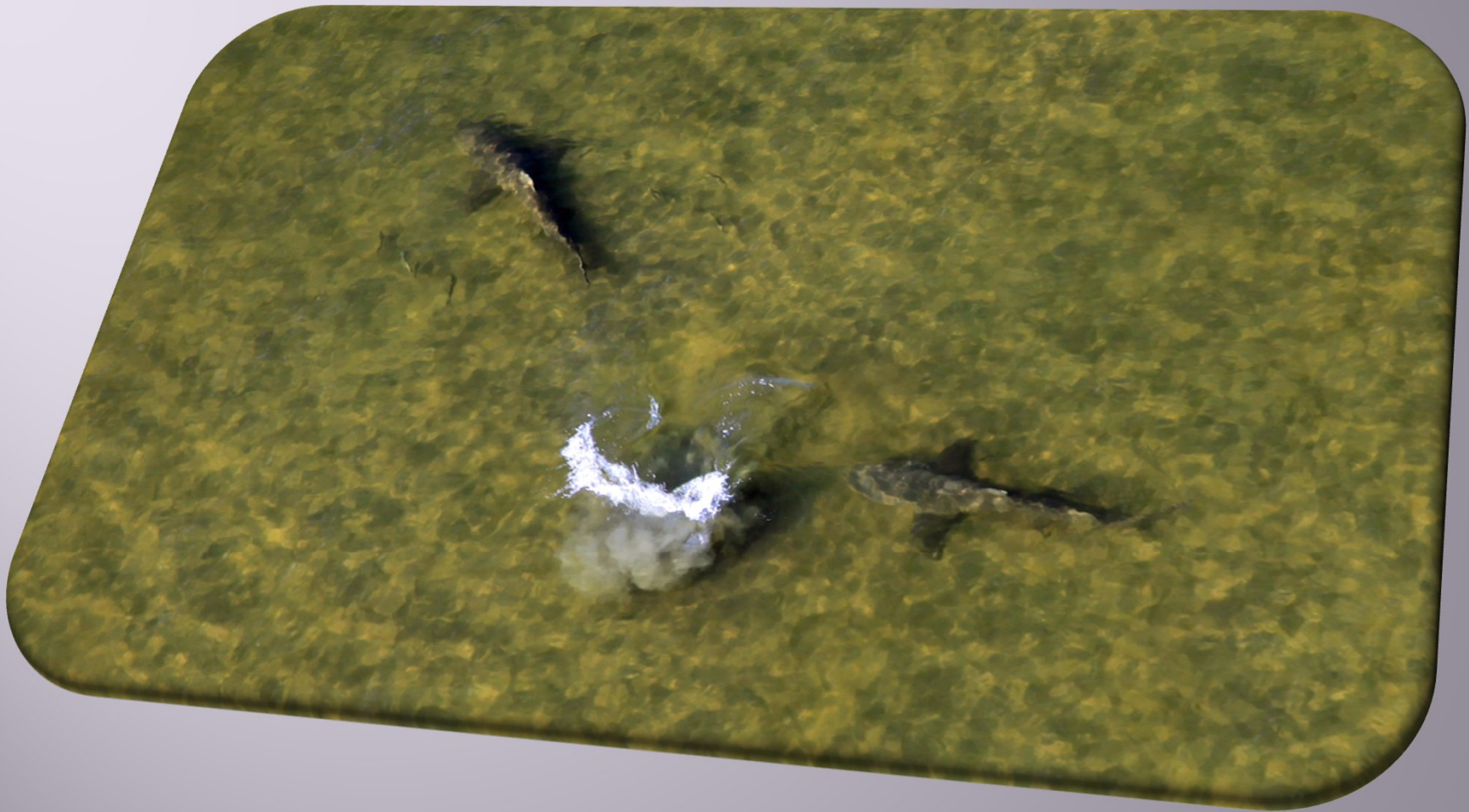
CREATE EDUCATIONAL PROGRAMS & SCIENTIFIC RESEARCH



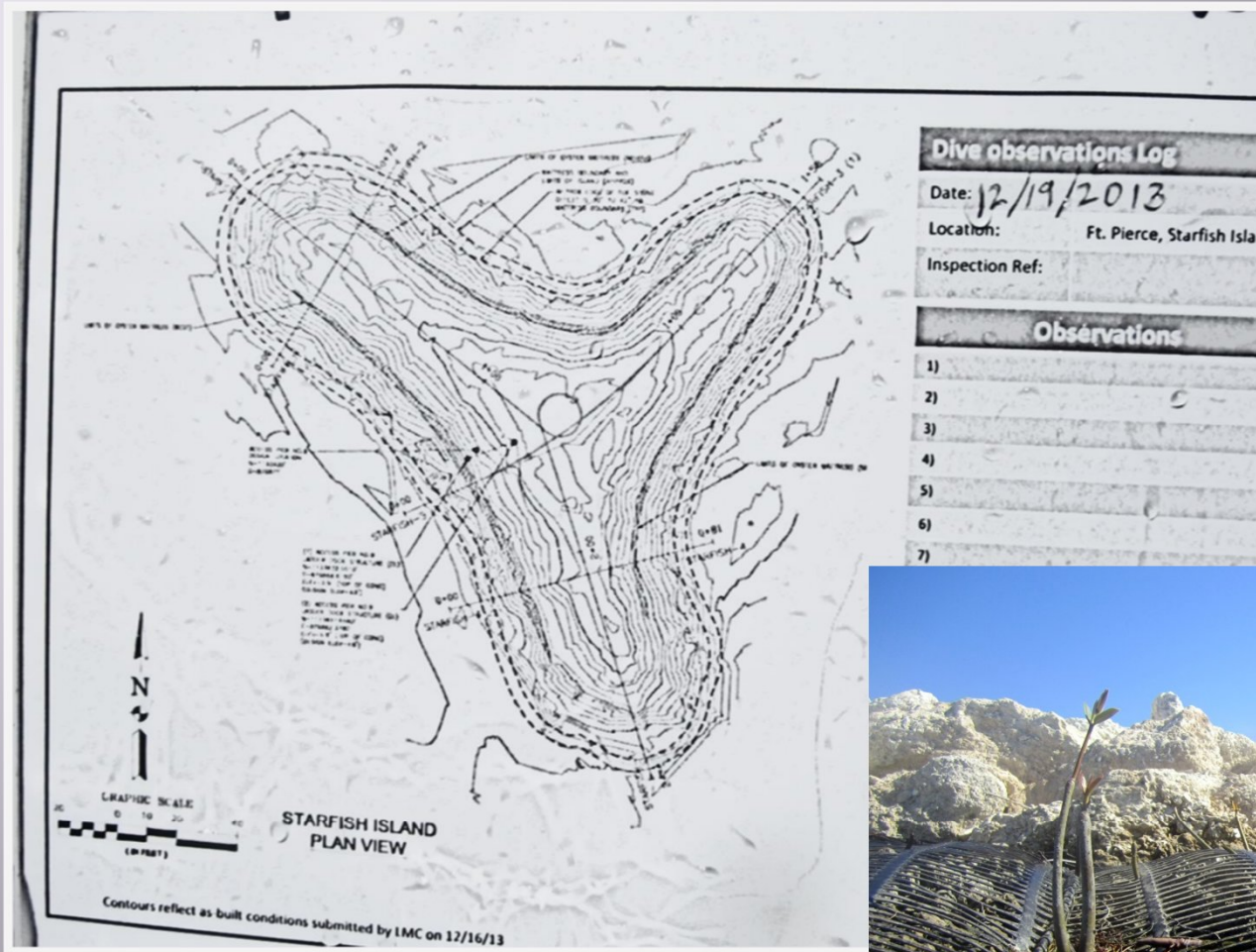
TOURISM

- ▣ Fishing (22 different species have been identified)
- ▣ Canoeing
- ▣ Kayaking
- ▣ Diving
- ▣ Birding





Located between Groin 4 & 5
outside of Tern Island



Eel Island

EEL ISLAND



FISHERMAN'S WHARF MARINA

▣ Where do we go from here?



- Do we want restaurant possibilities?
- Other land uses?
- Or maintain status quo?
- Dredging needs
- Reconstruction of docks

Bon

Voyage

