

City of Fort Pierce

Street Conditions List

List shows all streets and associated lengths with
"Poor" condition pavement

STREET NAME	LENGTH
A E BACKUS AVE	268
A E BACKUS AVE	336
AL LN	257
APPLE ST	380
APPLE ST	454
APPLE ST	338
APPLE ST	340
ATLANTIC AVE	426
ATLANTIC AVE	337
ATLANTIC AVE	312
ATLANTIC AVE	686
AVENUE A	547
AVENUE B	210
AVENUE B	177
AVENUE B	255
AVENUE B	457
AVENUE B	215
AVENUE B	257
AVENUE B	327
AVENUE B	339
AVENUE B	337
AVENUE B	332
AVENUE B	329
AVENUE B	550
AVENUE B	346
AVENUE B	243
AVENUE B	409
AVENUE C	188
AVENUE C	171
AVENUE C	451
AVENUE C	166
AVENUE C	275
AVENUE C	337
AVENUE C	329
AVENUE C	329
AVENUE C	359
AVENUE C	346
AVENUE C	243
AVENUE D	210
AVENUE D	275
AVENUE D	530

City of Fort Pierce

Street Conditions List

List shows all streets and associated lengths with
"Poor" condition pavement

STREET NAME	LENGTH
AVENUE E	283
AVENUE E	283
AVENUE E	288
AVENUE E	280
AVENUE E	280
AVENUE E	238
AVENUE E	542
AVENUE E	346
AVENUE F	344
AVENUE G	201
AVENUE H	181
AVENUE H	406
AVENUE H	664
AVENUE H	323
AVENUE H	82
AVENUE H	377
AVENUE H	245
AVENUE I	406
AVENUE I	285
AVENUE I	332
AVENUE I	176
AVENUE I	322
AVENUE I	314
AVENUE J	334
AVENUE J	335
AVENUE J	659
AVENUE J	299
AVENUE K	335
AVENUE K	660
AVENUE M	391
AVENUE M	280
AVENUE M	330
AVENUE M	159
AVENUE M	320
AVENUE M	661
AVENUE M	332
AVENUE M	327
AVENUE M	327
AVENUE M	336
AVENUE M	329
AVENUE M	329

City of Fort Pierce

Street Conditions List

List shows all streets and associated lengths with
"Poor" condition pavement

STREET NAME	LENGTH
AVENUE M	1,289
AVENUE O	154
AVENUE O	320
AVENUE O	146
BAYSHORE DR	172
BAYSHORE DR	369
BAYSHORE DR	378
BEACH CT	169
BEACH CT	505
BEACH CT	350
BEACH CT	469
BEACH CT	555
BEACH CT	798
BEACH CT	202
BEACH CT	505
BIRCH ST	173
BOSTON AVE	245
BOSTON AVE	240
BOSTON AVE	431
BOSTON AVE	168
BOSTON AVE	451
BOSTON AVE	510
BOSTON AVE	329
BOSTON AVE	163
BOSTON AVE	84
BOSTON AVE	206
BOSTON AVE	297
BOSTON AVE	276
BOSTON AVE	343
BOSTON AVE	89
BOSTON AVE	265
BOSTON AVE	183
BOSTON AVE	332
BOSTON AVE	205
BOSTON AVE	354
BOSTON AVE	339
BOSTON AVE	337
BOSTON AVE	312
BOSTON AVE	626
BOSTON AVE	683
BOSTON AVE	285

City of Fort Pierce

Street Conditions List

List shows all streets and associated lengths with
"Poor" condition pavement

STREET NAME	LENGTH
BOSTON AVE	339
BUDD ST	232
CEDAR PL	240
CEDAR PL	542
CEDAR PL	344
CITRUS AVE	408
CITRUS AVE	449
CITRUS AVE	307
CITRUS AVE	332
CITRUS AVE	324
CITRUS AVE	623
CITRUS AVE	686
CYPRESS AVE	847
CYPRESS AVE	386
DEPOT DR	272
DUNDAS CT	148
DUNDAS CT	349
DUNDAS CT	212
EASTER AVE	331
EASTER AVE	332
EASTER AVE	329
EASTER AVE	495
EASTER AVE	324
EASTER AVE	329
EASTER AVE	324
EASTER AVE	354
EASTER AVE	563
EDGEWOOD TER	660
EGRET AVE	1,218
EUCALYPTUS AVE	638
EUCALYPTUS AVE	532
FISHERMANS WHARF	961
FISHERMANS WHARF	282
FLORIDA AVE	282
FLORIDA AVE	337
FLORIDA AVE	337
FLORIDA AVE	330
FLORIDA AVE	1,315
FLORIDA AVE	314
FLORIDA AVE	339
FLORIDA AVE	312

City of Fort Pierce

Street Conditions List

List shows all streets and associated lengths with
"Poor" condition pavement

STREET NAME	LENGTH
FLORIDA AVE	267
FLORIDA AVE	339
FULTON DR	655
FULTON DR	261
FULTON DR	493
GEORGIA AVE	354
GEORGIA AVE	357
GEORGIA AVE	357
GEORGIA AVE	312
HAMPTON PL	339
HAMPTON PL	309
HERON AVE	1,062
HIBISCUS AVE	339
HIBISCUS AVE	332
HIBISCUS AVE	92
HIBISCUS AVE	235
IBIS AVE	1,377
INDIANA AVE	664
INDIANA AVE	652
INTERCONNECT BETWEEN 8TH & PARKWAY	157
INTERCONNECT BETWEEN BAYSHORE & PLOV	145
INTERCONNECT BETWEEN BEACH & PARKWAY	156
JACARANDA AVE	557
JERSEY AVE	676
JERSEY AVE	646
KENTUCKY AVE	342
KENTUCKY AVE	339
KENTUCKY AVE	332
KENTUCKY AVE	677
KENTUCKY AVE	327
MAPLE AVE	422
MAYFLOWER RD	374
MAYFLOWER RD	664
MAYFLOWER RD	272
MCCRAY CT	364
MEANS CT	569
MEANS CT	190
MEANS CT	86
MIAMI CT	430
MIAMI CT	421
MIMOSA AVE	247

City of Fort Pierce

Street Conditions List

List shows all streets and associated lengths with
"Poor" condition pavement

STREET NAME	LENGTH
MIMOSA AVE	408
MIMOSA AVE	511
MIMOSA AVE	203
MIMOSA AVE	549
MISSISSIPPI AVE	433
MISSISSIPPI AVE	253
MISSISSIPPI AVE	327
MISSISSIPPI AVE	332
N 10TH ST	68
N 10TH ST	520
N 11TH ST	309
N 11TH ST	374
N 11TH ST	637
N 11TH ST	703
N 12TH ST	135
N 12TH ST	158
N 12TH ST	167
N 12TH ST	170
N 12TH ST	176
N 12TH ST	208
N 12TH ST	317
N 12TH ST	327
N 12TH ST	389
N 12TH ST	545
N 12TH ST	621
N 12TH ST	637
N 12TH ST	696
N 13TH ST	137
N 13TH ST	278
N 13TH ST	632
N 13TH ST	763
N 13TH ST	776
N 13TH ST	1,306
N 13TH ST	1,332
N 14TH ST	168
N 14TH ST	262
N 14TH ST	263
N 14TH ST	697
N 14TH ST	729
N 15TH ST	316
N 15TH ST	659

City of Fort Pierce

Street Conditions List

List shows all streets and associated lengths with
"Poor" condition pavement

STREET NAME	LENGTH
N 16TH CT	660
N 16TH CT	661
N 16TH CT	662
N 16TH CT	677
N 16TH ST	139
N 16TH ST	257
N 16TH ST	264
N 16TH ST	625
N 16TH ST	664
N 16TH ST	665
N 16TH ST	682
N 17TH ST	182
N 17TH ST	323
N 17TH ST	329
N 17TH ST	522
N 17TH ST	622
N 17TH ST	659
N 17TH ST	659
N 17TH ST	661
N 17TH ST	681
N 17TH ST	711
N 17TH ST	1,326
N 18TH CT	576
N 18TH CT	600
N 20TH ST	279
N 20TH ST	451
N 20TH ST	600
N 23RD ST	65
N 23RD ST	266
N 23RD ST	442
N 23RD ST	609
N 24TH ST	218
N 24TH ST	499
N 24TH ST	607
N 26TH ST	596
N 27TH ST	81
N 27TH ST	597
N 27TH ST	747
N 28TH ST	648
N 28TH ST	671
N 2ND ST	110

City of Fort Pierce

Street Conditions List

List shows all streets and associated lengths with
"Poor" condition pavement

STREET NAME	LENGTH
N 2ND ST	302
N 2ND ST	323
N 2ND ST	332
N 2ND ST	338
N 2ND ST	589
N 2ND ST	691
N 2ND ST	759
N 30TH ST	666
N 5TH ST	366
N 6TH ST	245
N 6TH ST	296
N 6TH ST	381
N 6TH ST	456
N 6TH ST	764
N 7TH ST	245
N 7TH ST	246
N 7TH ST	290
N 7TH ST	335
N 7TH ST	481
N 7TH ST	502
N 7TH ST	720
N 8TH ST	244
N 8TH ST	244
N 8TH ST	278
N 8TH ST	321
N 8TH ST	350
N 8TH ST	707
N 9TH ST	347
N 9TH ST	350
N 9TH ST	600
N 9TH ST	669
N INDIAN RIVER DR	91
N INDIAN RIVER DR	621
NEBRASKA AVE	627
OHIO AVE	290
OHIO AVE	144
OHIO AVE	186
OHIO AVE	238
OHIO AVE	441
OHIO AVE	351
OHIO AVE	300

City of Fort Pierce

Street Conditions List

List shows all streets and associated lengths with
"Poor" condition pavement

STREET NAME	LENGTH
OHIO AVE	674
OHIO AVE	359
PARKWAY DR	162
PARKWAY DR	160
PARKWAY DR	346
PARKWAY DR	107
PARKWAY DR	308
PARKWAY DR	112
PARKWAY DR	394
PARKWAY DR	214
PARKWAY DR	212
PARKWAY DR	42
PARKWAY DR	142
PARKWAY DR	161
PARKWAY DR	169
PELICAN DR	260
PIERCE ST	296
PLOVER AVE	156
PLOVER AVE	213
PLOVER AVE	351
PLOVER AVE	394
POINSETTIA DR	413
PORT AVE	547
PRESTON CT	381
PRESTON CT	410
QUINCY AVE	188
QUINCY AVE	329
QUINCY AVE	332
QUINCY AVE	342
QUINCY AVE	344
QUINCY AVE	347
QUINCY AVE	733
ROSE AVE	173
ROSE AVE	173
ROSE AVE	374
ROSELYN AVE	634
S 10TH ST	187
S 10TH ST	510
S 10TH ST	349
S 10TH ST	374
S 10TH ST	96

City of Fort Pierce

Street Conditions List

List shows all streets and associated lengths with
"Poor" condition pavement

STREET NAME	LENGTH
S 10TH ST	781
S 10TH ST	332
S 10TH ST	302
S 10TH ST	508
S 10TH ST	528
S 11TH ST	311
S 11TH ST	343
S 11TH ST	286
S 11TH ST	326
S 11TH ST	372
S 11TH ST	658
S 11TH ST	661
S 11TH ST	692
S 11TH ST	540
S 12TH ST	182
S 12TH ST	158
S 12TH ST	280
S 12TH ST	329
S 12TH ST	375
S 12TH ST	658
S 12TH ST	661
S 12TH ST	684
S 13TH ST	74
S 13TH ST	126
S 13TH ST	225
S 13TH ST	349
S 13TH ST	390
S 13TH ST	529
S 13TH ST	560
S 13TH ST	649
S 13TH ST	727
S 13TH ST	987
S 13TH ST	3,181
S 14TH ST	196
S 15TH ST	67
S 15TH ST	138
S 15TH ST	158
S 15TH ST	244
S 15TH ST	273
S 15TH ST	322
S 15TH ST	346

City of Fort Pierce

Street Conditions List

List shows all streets and associated lengths with
"Poor" condition pavement

STREET NAME	LENGTH
S 15TH ST	351
S 15TH ST	352
S 15TH ST	397
S 17TH ST	97
S 17TH ST	152
S 17TH ST	176
S 17TH ST	209
S 17TH ST	237
S 17TH ST	348
S 17TH ST	356
S 17TH ST	400
S 17TH ST	658
S 19TH CT	104
S 19TH CT	522
S 19TH ST	118
S 19TH ST	522
S 20TH ST	321
S 20TH ST	668
S 21ST ST	303
S 21ST ST	365
S 21ST ST	503
S 23RD ST	663
S 23RD ST	660
S 24TH ST	689
S 24TH ST	662
S 24TH ST	642
S 26TH ST	790
S 26TH ST	59
S 26TH ST	660
S 26TH ST	662
S 26TH ST	661
S 26TH ST	658
S 27TH ST	357
S 27TH ST	660
S 27TH ST	661
S 27TH ST	353
S 28TH ST	331
S 28TH ST	659
S 28TH ST	665
S 28TH ST	286
S 28TH ST	370

City of Fort Pierce

Street Conditions List

List shows all streets and associated lengths with
"Poor" condition pavement

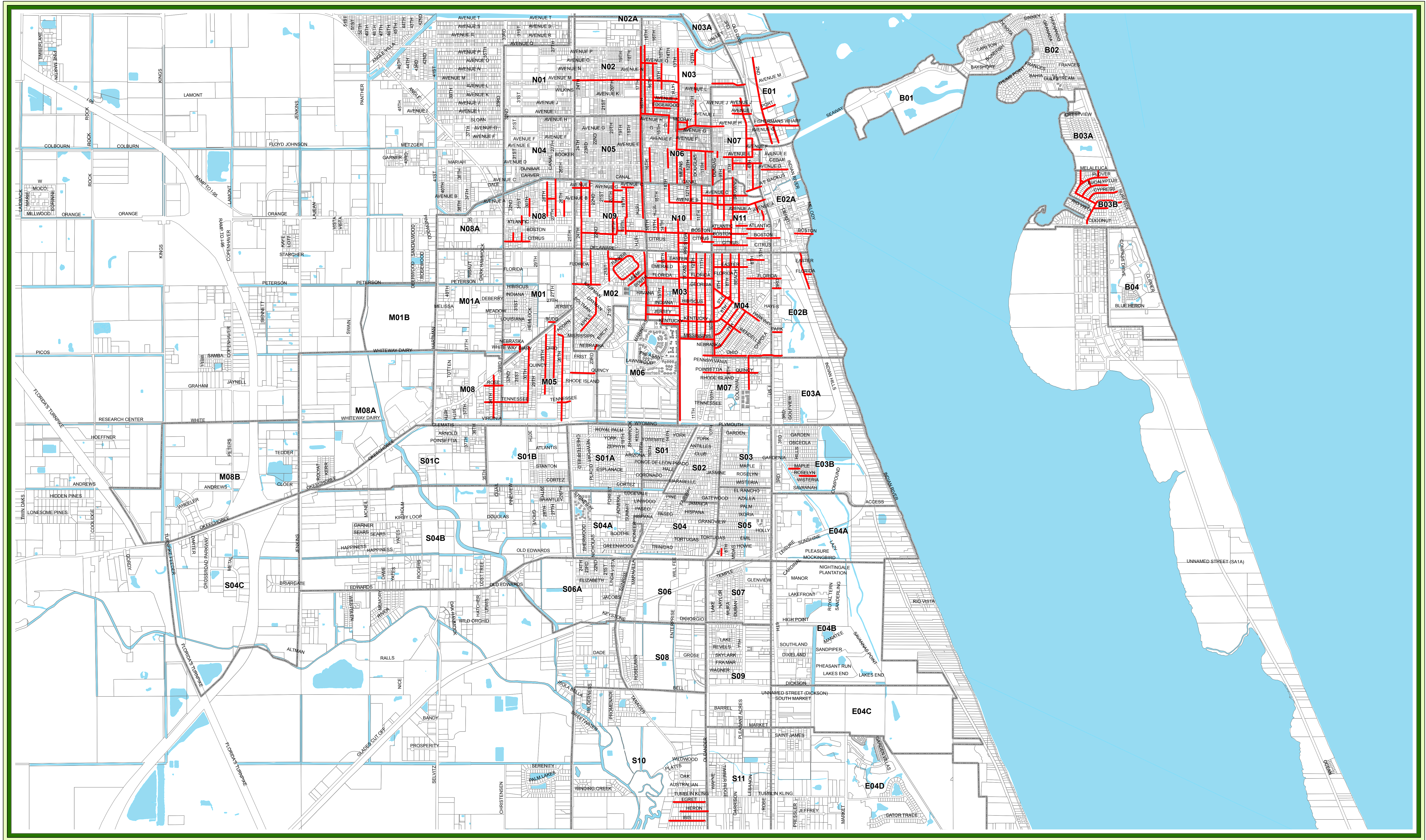

STREET NAME	LENGTH
S 2ND ST	590
S 2ND ST	419
S 2ND ST	423
S 30TH ST	847
S 30TH ST	660
S 30TH ST	661
S 31ST ST	329
S 31ST ST	274
S 31ST ST	331
S 32ND ST	329
S 34TH ST	64
S 34TH ST	141
S 34TH ST	473
S 34TH ST	334
S 34TH ST	644
S 7TH ST	794
S 7TH ST	1,128
S 8TH ST	52
S 8TH ST	196
S 8TH ST	128
S 8TH ST	320
S 8TH ST	504
S 8TH ST	349
S 8TH ST	469
S 8TH ST	290
S 8TH ST	793
S 8TH ST	301
S 8TH ST	169
S 8TH ST	316
S 9TH ST	503
S 9TH ST	350
S 9TH ST	467
S 9TH ST	239
S 9TH ST	671
S TUCKER CT	168
SARASOTA AVE	332
SARASOTA AVE	166
SARASOTA AVE	181
SOUTH AVE	259
SUNSET ISLES RD	300
SUNSET ISLES RD	302

City of Fort Pierce

Street Conditions List

List shows all streets and associated lengths with
"Poor" condition pavement

STREET NAME	LENGTH
SUNSET ISLES RD	301
TENNESSEE AVE	163
TENNESSEE AVE	332
TENNESSEE AVE	327
TENNESSEE AVE	668
TEXAS CT	181
TEXAS CT	274
TEXAS CT	336
TEXAS CT	375
TEXAS CT	660
TEXAS CT	157
TEXAS CT	660
TEXAS CT	684
TUCKER CT	810
TUCKER CT	406
WALNUT CT	298
WENDELL RD	311
WENDELL RD	311
<u>WENDELL RD</u>	<u>320</u>
	208,002





CITY OF FT PIERCE
DEPARTMENT OF ENGINEERING



CITY OF FORT PIERCE STREET CONDITIONS MAP

This map is a conceptual tool utilized for project development only. Though the information provided by this map is accepted to be accurate for the City's administrative purposes, it is not to be used for technical purposes. Any information, including but not limited to software and data, received from the City of Ft Pierce in fulfillment of a public records request is provided "AS IS" without warranty of any kind. Any information provided by this map to be used for purposes other than reference must be confirmed by field survey.

Legend

	Poor Conditions		Parcels
	Maintenance Section		Water