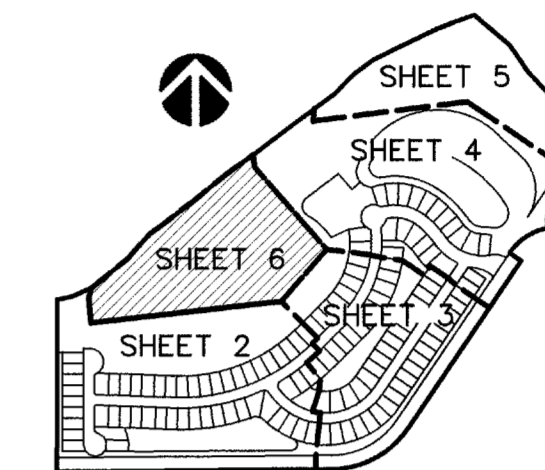
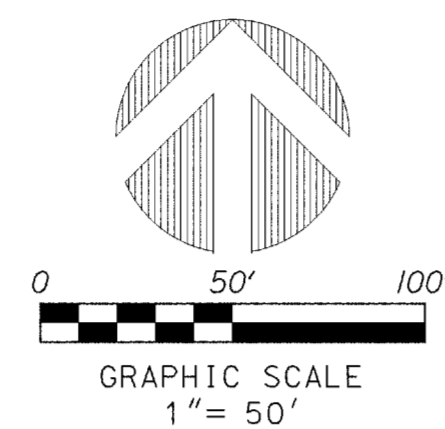


PERIMETER

SURVEYING & MAPPING
Prepared by: Jeff S. Hodapp, P.S.M.
Certificate of Authorization No. LB7264
949A Clint Moore Road
Boca Raton, Florida 33487
Tel: (561) 241-9988
Fax: (561) 241-5182

CARRIAGE POINTE ESTATES

A PORTION OF SECTION 30, TOWNSHIP 35 SOUTH, RANGE 40, EAST
CITY OF FT. PIERCE, ST. LUCIE COUNTY, FLORIDA.
JUNE, 2014



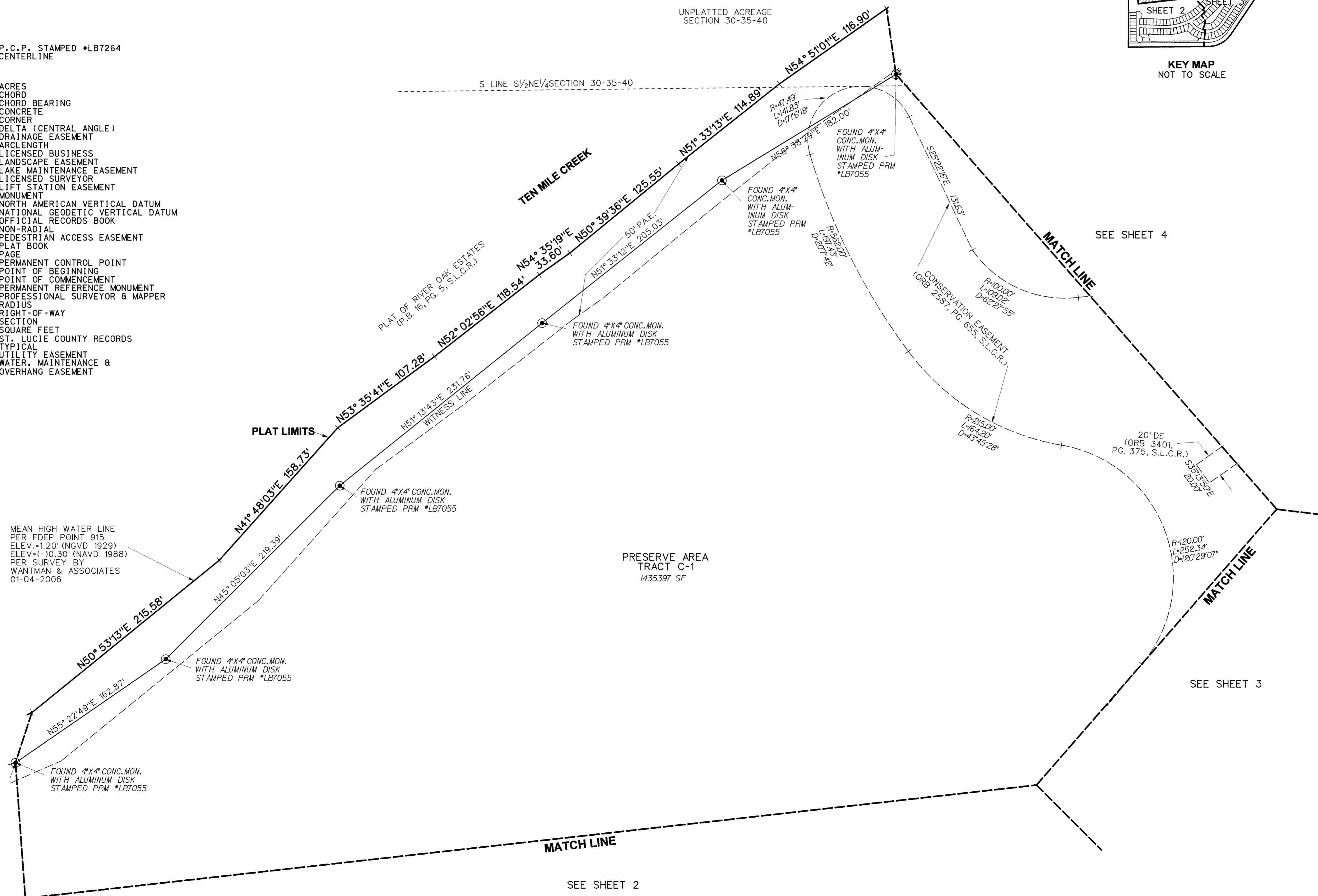
KEY MAP
NOT TO SCALE

LEGEND:

- o : P.C.P. STAMPED *LB7264
- € : CENTERLINE

ABBREVIATIONS:

- AC. : ACRES
- CH : CHORD
- CHB : CHORD BEARING
- CONC. : CONCRETE
- COR. : CORNER
- D : DELTA (CENTRAL ANGLE)
- D.E. : DRAINAGE EASEMENT
- L : ARCLength
- L.B. : LICENSED BUSINESS
- L.E. : LANDSCAPE EASEMENT
- L.M.E. : LAKE MAINTENANCE EASEMENT
- L.S. : LICENSED SURVEYOR
- L.S.E. : LIFT STATION EASEMENT
- MON. : MONUMENT
- NAVD : NORTH AMERICAN VERTICAL DATUM
- NGVD : NATIONAL GEODETIC VERTICAL DATUM
- O.R.B. : OFFICIAL RECORDS BOOK
- (NR) : NON-RADIAL
- P.A.E. : PEDESTRIAN ACCESS EASEMENT
- P.B. : PLAT BOOK
- PG. : PAGE
- P.C.P. : PERMANENT CONTROL POINT
- P.O.B. : POINT OF BEGINNING
- P.O.C. : POINT OF COMMENCEMENT
- P.R.M. : PERMANENT REFERENCE MONUMENT
- P.S.M. : PROFESSIONAL SURVEYOR & MAPPER
- R : RADIUS
- R/W : RIGHT-OF-WAY
- SEC. : SECTION
- SF : SQUARE FEET
- S.L.C.R. : ST. LUCIE COUNTY RECORDS
- (TYP) : TYPICAL
- U.E. : UTILITY EASEMENT
- WMOE : WATER, MAINTENANCE & OVERHANG EASEMENT



SEE SHEET 2

SEE SHEET 2

SEE SHEET 4

SEE SHEET 3