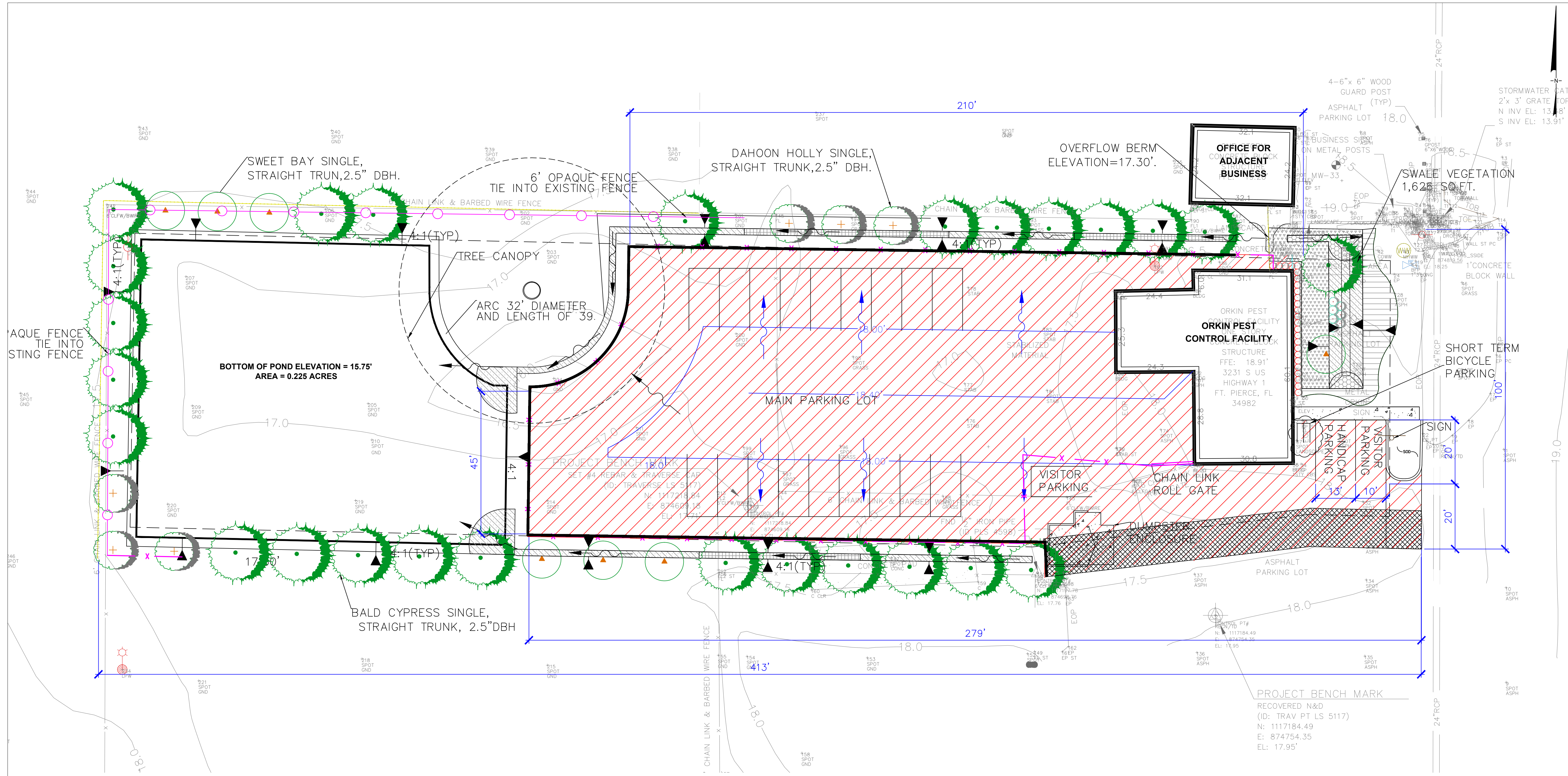


FIGURES

P:\BOCA\PRJ\...CADD (PROJECTS)\OR\OR\G04209 SITE PLAN_LANDSCAPE STRIP FOR CITY.DWG (7 October 2014) cchiera



LEGEND

	PROPOSED OPAQUE FENCE		PROPOSED CONCRETE CURB (SEE DETAIL 1 IN FIGURE 2B)
	PROPOSED CHAIN LINK FENCE		PROPOSED FENCE GATE (FOR BOTH ORKIN AND PROPERTY OWNER ADJACENT TO THE SOUTH)
	PROPOSED TOPOGRAPHY		ESTIMATED EXTENT OF ORKIN LANDSCAPE STRIP PURSUANT TO CITY OF FORT PIERCE CODE IF SHARED ACCESS AGREEMENT NOT OBTAINED
	EXISTING TOPOGRAPHY (NOTE 1)		
	PROPERTY LINE (APPROXIMATE)		
	PROPOSED ASPHALTIC CONCRETE COVER		
	PROPOSED SURFACE WATER FLOW DIRECTION (POST CONSTRUCTION)		
	PROPOSED CONCRETE AREA (SIDEWALK AND DUMPSTER ENCLOSURE)		

NOTE:

1. UNDERLYING SURVEY PREPARED BY KUGELMANN LAND SURVEYING, INC. (UPDATED DECEMBER 2012).
2. REFER TO THE LANDSCAPE DESIGN PLAN FOR DETAILED INFORMATION ON THE LANDSCAPING, ETC.
3. REFER TO THE PROPOSED GRADING PLAN FOR DETAILED INFORMATION ON THE GRADING AND DRAINAGE.
4. DRIVEWAY FROM US HIGHWAY IS THE REQUIRED 24 FEET UPON SHARED ACCESS AGREEMENT REACH WITH THE PROPERTY OWNER TO THE SOUTH ON DD MMM 2014.
5. ALL CONSTRUCTION WILL ADHERE TO THE REQUIREMENTS SET FORTH IN THE CITY OF FORT PIERCE CODE OF ORDINANCE NO. K-421, SECTION 17.



DRAFT

Proposed Final Site Plan with Landscape Strip
Orkin Pest Control Facility
3231 S, US Highway 1
Ft. Pierce, Florida 34982

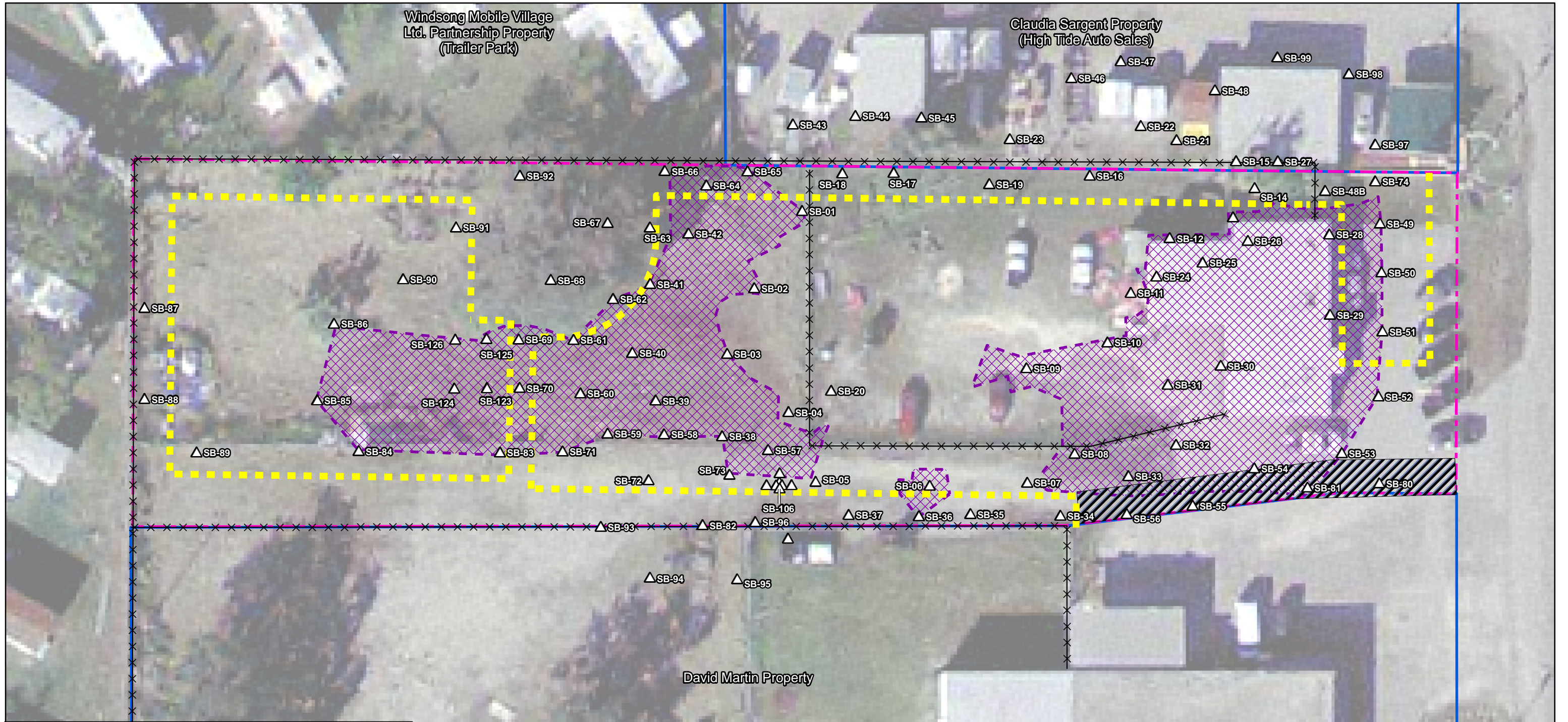
Geosyntec
consultants

Boca Raton, FL

January 2014

Figure:

1



Legend

- △ Soil Boring Location
- ✕✕✕ Approximate Fenceline
- ▬▬▬ Approximate Location of Inside Edge of Drainage Feature
- ▨▨▨ Estimated Extend of Orkin Landscaping Strip pursuant to City of Fort Pierce Code [§22-187.22(a)] if shared access agreement not obtained.
- ▨▨▨ Estimated Extend of OCP-affect soil outside of completed excavations
- ▬▬▬ Approximate Property Boundary for Orkin Facility
- ▬▬▬ Approximate Boundary of Adjacent Properties

Notes:

1. Source of 2005 Aerial Photograph: FDOT Surveying and Mapping Office.
2. Landscaping strip are estimated based on the City of Fort Pierce Code of Ordinances [§22-187.22(a)].
3. Property boundaries estimated from St. Lucie County Property Appraiser's website.

30 15 0 30 Feet
 ───────────────────────────────────
 Approximate Scale

Estimated Landscaping Strip

Orkin Pest Control Facility
 3231 S. US Highway 1
 Ft. Pierce, Florida 34982

Geosyntec
 consultants

Boca Raton, FL October 2014

Figure
2

G:\CO-0297 (Orkin - Fort Pierce)\MDS\2014 Cop and Drainage\Fig 1 Cop and Drainage for Dove Martin.mxd CHC