

ATTACHMENT 1

SITE REDEVELOPMENT PLAN

PROPOSED SITE REDEVELOPMENT PLAN

ORKIN FORT PIERCE

3231 SOUTH U.S. HIGHWAY 1, FORT PIERCE, FLORIDA

NOVEMBER 2014

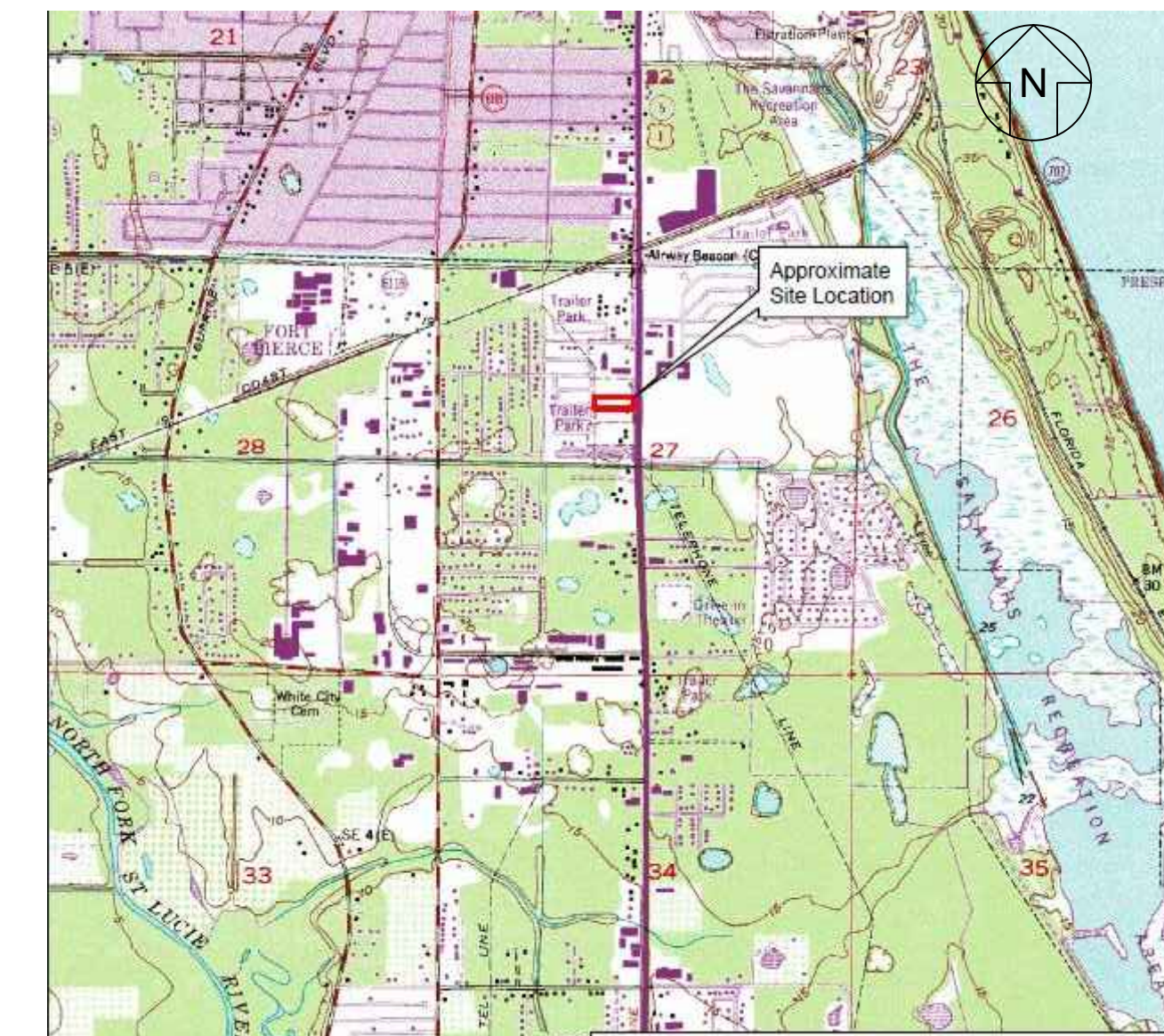
LIST OF DRAWINGS

DRAWING NO.	DRAWING TITLE
A	TITLE SHEET
1	BOUNDARY AND TOPOGRAPHY
2A	PROPOSED FINAL GRADING PLAN
2B	PROPOSED FINAL GRADING PLAN DETAILS AND NOTES
2C	PROPOSED FINAL GRADING PLAN DETAILS AND NOTES
LP1	LANDSCAPE PLAN
LP2	LANDSCAPE SPEC.
3A	PROPOSED FINAL SITE PLAN
3B	PROPOSED FINAL SITE PLAN DETAILS AND NOTES
4A	SWPP PHASE 1 AND PHASE 2
4B	SWPP NOTES



SOURCE: Esri, DigitalGlobe, GeoEye, i-cubed, USDA, USGS, AEX, Getmapping, Aerogrid, IGN, IGP, and the GIS User Community

LOCATION MAP
NOT TO SCALE



SOURCE: FORT PIERCE USGS 7.5" QUADRANGLE
VICINITY MAP
NOT TO SCALE

PREPARED FOR:



ORKIN, LLC
2170 PIEDMOND ROAD N.E.
ATLANTA, GA 30324

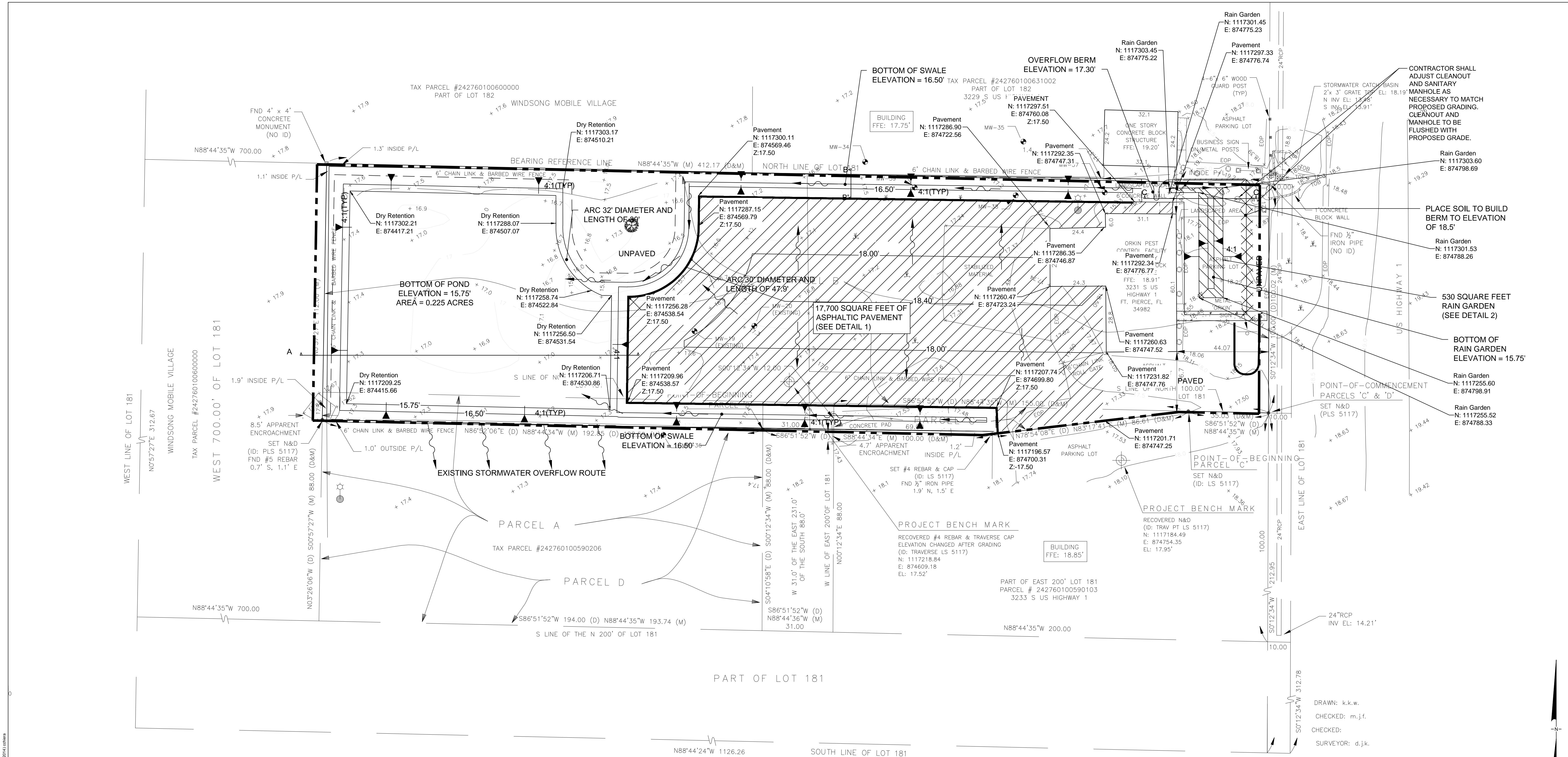
PREPARED BY:



900 BROKEN SOUND PARKWAY, NW , SUITE 200
BOCA RATON, FLORIDA
TELEPHONE: 561.995.0900



DATE:	11/19/2014	FILE NO.	TITLE-SHEET
PROJECT NO.		FIGURE NO.	A



LEGEND

- 18.00' PROPOSED TOPOGRAPHY/GRADING LINES
- 17.0 EXISTING TOPOGRAPHY (NOTE 1)
- PROPERTY LINE (APPROXIMATE)
- PROPOSED ASPHALTIC CONCRETE COVER
- PROPOSED CONCRETE CURB (DETAIL 1)
- PROPOSED SURFACE WATER FLOW DIRECTION (POST CONSTRUCTION)
- PROPOSED CONCRETE AREA (SIDEWALK AND DUMPSTER ENCLOSURE)

NOTE:

1. UNDERLYING SURVEY PREPARED BY KUGELMANN LAND SURVEYING, INC. (UPDATED DECEMBER 2012).
2. CROSS SECTION AA' AND BB' ARE SHOWN ON FIGURE 2C. CROSS SECTION CC' IS SHOWN ON FIGURE 2B.
3. HORIZONTAL COORDINATES ARE REFERENCED TO THE FLORIDA STATE PLANE COORDINATE SYSTEM, EAST ZONE, NORTH AMERICAN DATUM OF 1983 (NAD 83), 1990 ADJUSTMENT AND ARE BASED ON THE SAINT LUCIE COUNTY GPS MONUMENT "RBH", HAVING PUBLISHED COORDINATES OF N.1118364.90 FEET, E.872334.38 FEET, PER BOUNDARY AND TOPOGRAPHIC SURVEY BY KUGELMANN LAND SURVEYING, INC., DATED DECEMBER 2012.
4. ELEVATIONS DEPICTED HEREON ARE REFERENCED TO THE NORTH AMERICAN VERTICAL DATUM OF 1988 (NAVD 88) AND ARE BASED ON UNITED STATES COAST AND GEODETIC SURVEY MONUMENT "B 401" HAVING A PUBLISHED ELEVATION OF 16.17 FEET, PER BOUNDARY AND TOPOGRAPHIC SURVEY BY KUGELMANN LAND SURVEYING, INC., DATED DECEMBER 2012.
5. MONUMENTATION ARE PER THE BOUNDARY AND TOPOGRAPHIC SURVEY PRESENTED BY KUGELMANN LAND SURVEYING, INC.
6. MATCH EXISTING GRADE ALONG THE PROPERTY LINE.
7. SEE SITE PLAN FOR HANDICAP ACCESSIBILITY ROUTE AND GRADING REQUIREMENTS



Proposed Final Grading Plan

Orkin Pest Control Facility
3231 S. US Highway 1
Ft. Pierce, Florida 34982



Figure:
2a

Boca Raton, FL

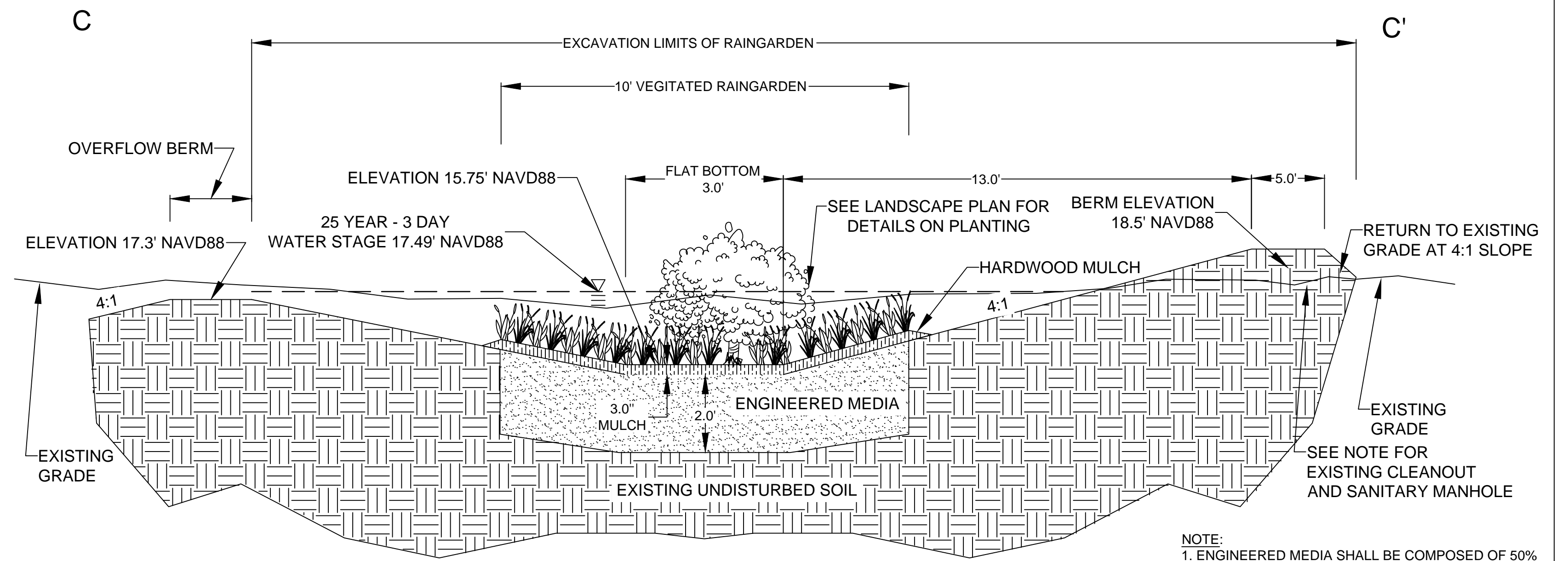
November 2013

P:\BODAP\UTL_CADD_PROJECTS\OROKIN\FORT_PIERCE\2013\11\13\11172013\FINAL.DWG (13 November 2013) cshwa

GENERAL NOTES

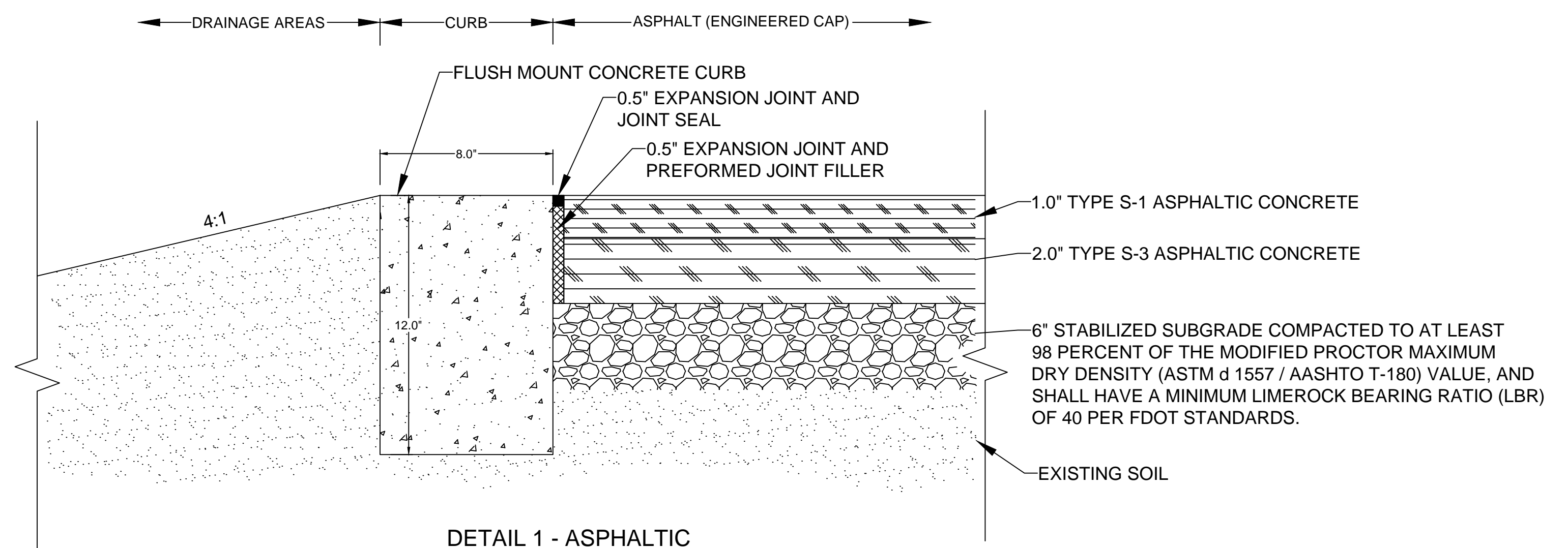
- ALL CONSTRUCTION SHALL BE IN ACCORDANCE WITH AND CONFORM TO THE MOST STRINGENT REQUIREMENT OF THE PROJECT SPECIFICATION, THE LATEST EDITION OF THE FLORIDA DEPARTMENT OF TRANSPORTATION STANDARD SPECIFICATIONS FOR ROAD AND BRIDGE CONSTRUCTION (FDOT), AND SUPPLEMENTS THERETO.
- SUBSURFACE INFORMATION SHOWN ON THESE DRAWINGS WAS OBTAINED FOR USE IN ESTABLISHING DESIGN CRITERIA FOR THE PROJECT. THE ACCURACY OF THIS INFORMATION IS NOT GUARANTEED AND IS NOT TO BE CONSTRUED AS PART OF THE PLANS GOVERNING CONSTRUCTION OF THE PROJECT. IT IS THE RESPONSIBILITY OF THE CONTRACTOR TO INQUIRE OF THE ENGINEER IF ADDITIONAL INFORMATION IS AVAILABLE, TO MAKE ARRANGEMENTS TO REVIEW SAME PRIOR TO BIDDING, AND TO MAKE HIS OWN DETERMINATION AS TO ALL SUBSURFACE CONDITIONS.
- ALL PERSONAL PROPERTY, EXCEPT MAIL BOXES, WITHIN THE RIGHT-OF-WAY NOT RELOCATED BY THE PROPERTY OWNER SHALL BE REMOVED BY THE CONTRACTOR AS NECESSARY TO CONSTRUCT THE PROJECT IN ACCORDANCE WITH THE PLANS. MAIL BOXES SHALL BE RELOCATED BY THE CONTRACTOR IN ACCORDANCE WITH F.D.O.T. DESIGN STANDARD 532.
- THE DISPOSAL OF EXCESS EARTHWORK MATERIALS SHALL BE THE RESPONSIBILITY OF THE CONTRACTOR. APPROVALS OF DISPOSAL SITES SHALL BE OBTAINED FROM THE ENGINEER PRIOR TO DISPOSAL. IT IS IMPORTANT TO NOTE THAT DUE TO THE NATURE OF MATERIAL BEING HANDLED, SPECIAL PRECAUTIONS MUST BE MADE. THESE PRECAUTIONS INCLUDE BUT ARE NOT LIMITED TO LEVEL-D PPE (MORE INFORMATION ABOUT WORKER SAFETY CAN BE FOUND IN THE HEALTH AND SAFETY PLAN FOR THE SITE).
- SOD IN DISTURBED AREAS SHALL MATCH EXISTING TYPE SOD, UNLESS OTHERWISE DIRECTED BY THE ENGINEER.
- INSTALL A 4" MUCK BLANKET OR TOPSOIL TREATMENT ON ALL PERMANENT GRASS AREAS. COST TO BE INCLUDED IN CONTRACT UNIT PRICE FOR SOD.
- THE CONTRACTOR SHALL PERFORM HIS WORK IN ACCORDANCE WITH REQUIREMENTS OF THE VARIOUS PERMITS INCLUDED IN THE BID SPECIFICATIONS.
- THE INFORMATION SHOWN ON THESE DRAWINGS CONCERNING TYPE AND LOCATION OF UNDERGROUND AND OTHER UTILITIES IS BASED ON AVAILABLE RECORDS AND SURVEYS BUT IS NOT GUARANTEED TO BE ACCURATE OR ALL INCLUSIVE. THE CONTRACTOR SHALL MAKE HIS OWN DETERMINATION AS TO THE TYPE AND LOCATION OF UTILITIES AS MAY BE NECESSARY TO AVOID DAMAGE THERETO AND IS RESPONSIBLE FOR COORDINATING UTILITY RELOCATION WITH PROJECT CONSTRUCTION. PRIOR TO ORDERING DRAINAGE STRUCTURES, THE CONTRACTOR SHALL DETERMINE IF DRAINAGE/UTILITY CONFLICTS EXIST. INFORMATION ON CONFLICTS IS TO BE SUBMITTED TO THE ENGINEER AS SOON AS POSSIBLE AFTER DISCOVERY FOR RESOLUTION.
- PRIOR TO COMMENCEMENT OF WORK CONTRACTOR SHALL CALL SUNSHINE ONE 48 HOURS IN ADVANCE OF PERFORMING ANY UTILITY ADJUSTMENTS OR RELOCATIONS. SUNSHINE ONE PHONE NUMBER IS 1-800-432-4770.
- UTILITIES ARE TO BE ADJUSTED BY OTHERS OR AS DIRECTED BY THE ENGINEER.
- THE CONTRACTOR SHALL NOTIFY ALL GAS UTILITY COMPANIES A MINIMUM OF TWO WORKING DAYS PRIOR TO EXCAVATION AS REQUIRED BY CHAPTER 77-153 OF THE FLORIDA STATUTES.
- ALL (P.R.M.'s) IRONS AND MONUMENTS SHOWN ON PLANS, OR FOUND, SHALL BE PRESERVED. THOSE SHOWN IN PROPOSED PAVEMENT SHALL BE PROTECTED WITH A CAST IRON VALVE BOX.
- ANY U.S.C. AND G.S. MONUMENTS WITHIN THE LIMITS OF CONSTRUCTION SHALL BE PROTECTED. IF IN DANGER OF DAMAGE, THE CONTRACTOR SHALL NOTIFY THE PROJECT ENGINEER, ST. LUCIE COUNTY SURVEY SECTION 772-462-1707 AND BOTH SHALL NOTIFY:
STATE GEODETIC ADVISOR
3900 COMMONWEALTH BOULEVARD, SUITE 309,
TALLAHASSEE, FL
850-245-2606
- PUBLIC LAND CORNERS WITHIN THE LIMITS OF CONSTRUCTION SHALL BE PROTECTED. IF A CORNER MONUMENT IS IN DANGER OF BEING

- DESTROYED OR DISTURBED, THE CONTRACTOR SHALL NOTIFY THE PROJECT ENGINEER AND THE COUNTY SURVEYOR, WITHOUT DELAY, BY TELEPHONE 772-462-1707). THE CONTRACTOR SHALL PROVIDE WRITTEN FOLLOW UP CONFIRMATION WITHIN 48 HOURS OF TELEPHONE NOTIFICATION.
- THE CONTRACTOR SHALL RELOCATE EXISTING TRAFFIC SIGNS AS REQUIRED DURING CONSTRUCTION. SIGNS, WHICH ARE DAMAGED DURING CONSTRUCTION, SHALL BE REPLACED BY THE CONTRACTOR AT NO COST TO THE OWNER. THE CONTRACTOR SHALL REMOVE AND STORE EXISTING TRAFFIC SIGNS THAT ARE NOT USED DURING CONSTRUCTION. THE CONTRACTOR SHALL RE-INSTALL THE STORED SIGNS AS DIRECTED BY THE ENGINEER.
- ALL EXCAVATIONS SHALL BE REQUIRED TO CONFORM TO THE PROVISIONS OF PART IV OF CHAPTER 553.60, F.S., ALSO KNOWN AS THE "TRENCH SAFETY ACT". TO PROTECT EXISTING PAVEMENT, STRUCTURES, FOUNDATIONS, AND CONSTRUCTION PERSONNEL DURING CONSTRUCTION OF THE PROJECT.
- ALL PRIVATE AND PUBLIC PROPERTY AFFECTED BY THIS WORK SHALL BE RESTORED TO A CONDITION EQUAL TO OR BETTER THAT THE CONDITION EXISTING. COST TO BE INCIDENTAL TO OTHER CONSTRUCTION AND NO EXTRA COMPENSATION WILL BE ALLOWED.
- ALL EXISTING TREES WITHIN THE RIGHT-OF-WAY ARE TO BE PRESERVED DURING CONSTRUCTION UNLESS OTHERWISE DIRECTED.
- PEGGED SOD TO BE PLACED ON ALL SLOPES 3:1 OR STEEPER.
- THE CONTRACTOR WILL BE RESPONSIBLE FOR PROVIDING TEMPORARY DRAINAGE AND MAINTENANCE OF ALL EXISTING RUNOFF DISCHARGES DURING CONSTRUCTION TO AVOID THE TRANSPORT OF SEDIMENT AND ERODIBLE SOILS UNTIL THE WORK HAS BEEN ACCEPTED BY THE COUNTY.
- THE CONTRACTOR SHALL BE RESPONSIBLE FOR A STAGING AREA TO STORE EQUIPMENT, SUPPLIES, & MATERIALS, PROVIDE EMPLOYEE PARKING, AND ETC. FOR THE DURATION OF CONSTRUCTION OR AS APPROVED BY THE ENGINEER.
- CONTRACTOR SHALL MAINTAIN POSITIVE DRAINAGE DURING CONSTRUCTION AND RESTORE ANY SWALE GRADES INSIDE OR OUTSIDE THE LIMITS OF CONSTRUCTION DISTURBED DURING CONSTRUCTION.
- THE CONTRACTOR IS CAUTIONED THAT THE CONSTRUCTION IMPROVEMENTS HEREIN ARE ASSOCIATED WITH A REMEDIAL ACTION PLAN (RAP) PREPARED BY GEOSYNTEC, DATED SEPTEMBER 2010, FOR THE REMOVAL OF IMPACTED SOILS. THE CONTRACTOR SHALL DEVELOP A HEALTH AND SAFETY PLAN CONSISTENT WITH THE ACTIVITIES INVOLVING THE RAP, AND SHALL MAKE ALL SUBCONTRACTORS ADHERE TO THE HEALTH AND SAFETY PLAN DURING CONSTRUCTION. THE HEALTH AND SAFETY PLAN SHALL BE DEVELOPED IN ACCORDANCE WITH ALL LOCAL, STATE AND FEDERAL REQUIREMENTS.



CROSS SECTION C-C'
TYPICAL RAIN GARDEN
NOT TO SCALE

NOTE:
1. ENGINEERED MEDIA SHALL BE COMPOSED OF 50% COARSE SAND (ASTM C-33), 25% TOPSOIL (CLAY CONTENT LESS THAN 10%), AND 25% ORGANIC COMPOST (LEAF AND MULCH MIX) OR EQUIVALENT SOIL MIXTURE THAT EXHIBITS AN INFILTRATION RATE LESS THAN 2.0 INCHES PER HOUR.
2. EXISTING SANITARY CLEANOUT AND MANHOLE TO BE ADJUSTED AS NECESSARY TO MATCH PROPOSED CONDITION.



DETAIL 1 - ASPHALTIC
PAVEMENT CROSS SECTION
NOT TO SCALE

Proposed Final Grading Plan Details and Notes

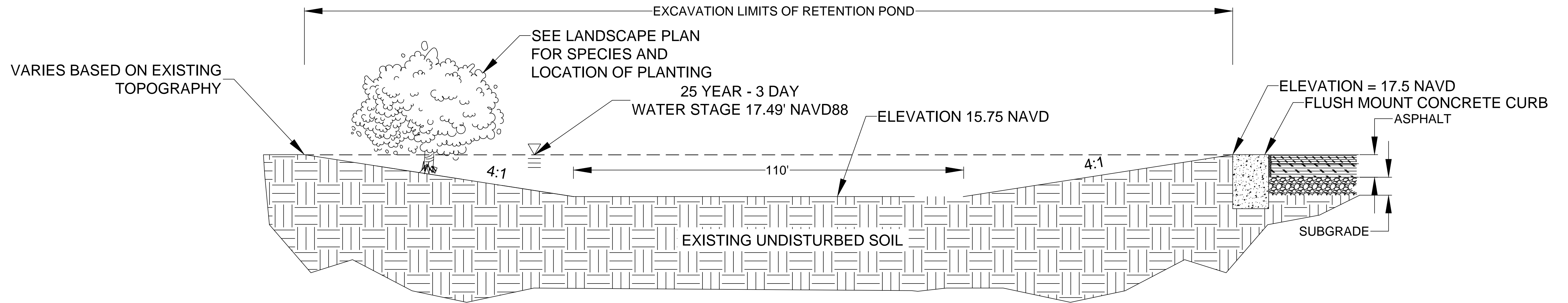
Orkin Pest Control Facility
3231 S. US Highway 1
Ft. Pierce, Florida 34982

Geosyntec
consultants

Boca Raton, FL

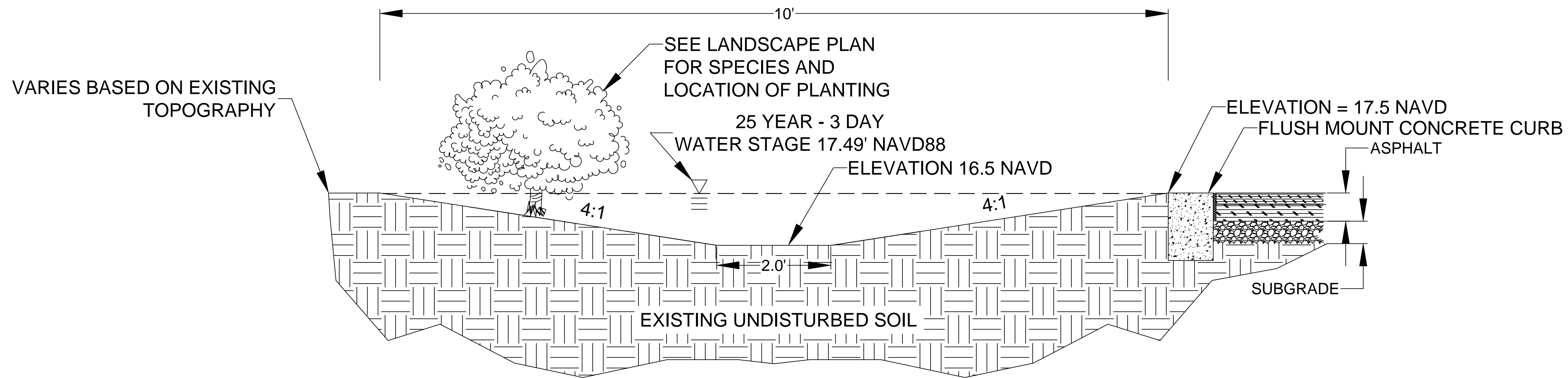
November 2013

Figure:
2b



CROSS SECTION A-A'
TYPICAL RETENTION POND
NOT TO SCALE

NOTE:
 REFER TO BOUNDARY AND TOPOGRAPHIC
 SURVEY FOR LIMITS OF EXISTING
 PROPERTY LINES.



CROSS SECTION B-B'
TYPICAL SWALE
NOT TO SCALE

Proposed Final Grading Plan Details and Notes

Orkin Pest Control Facility
 3231 S. US Highway 1
 Ft. Pierce, Florida 34982

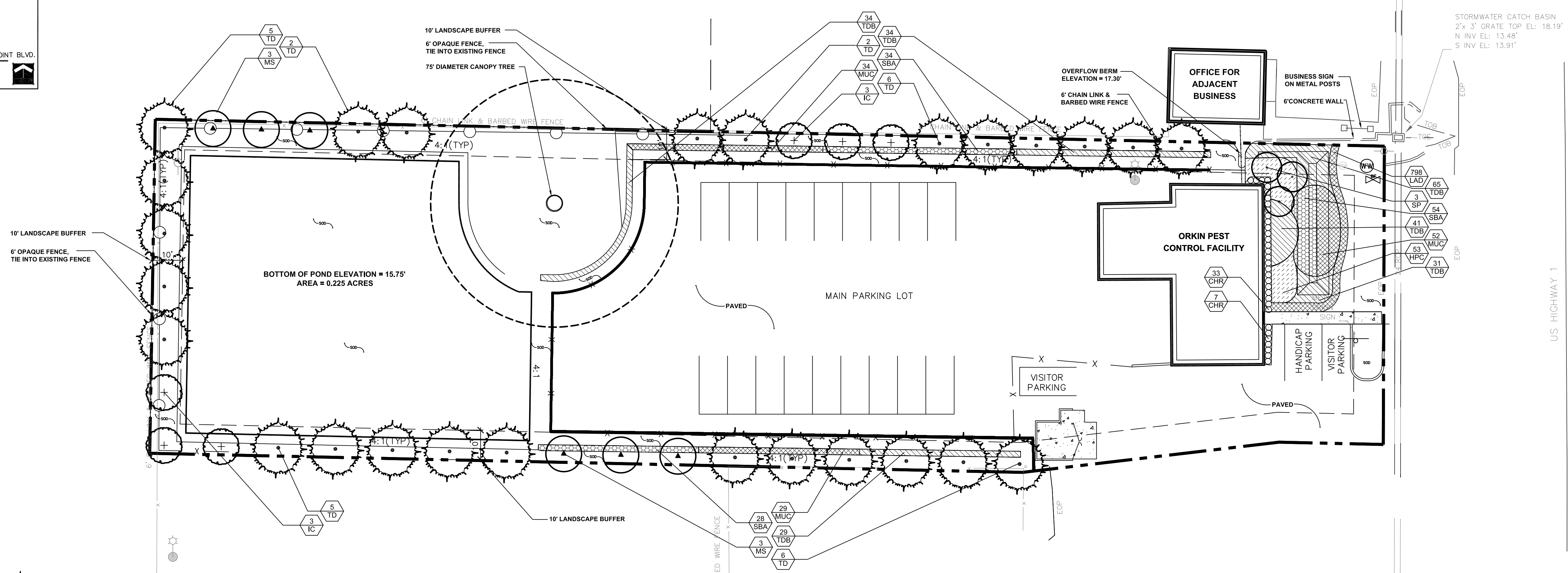
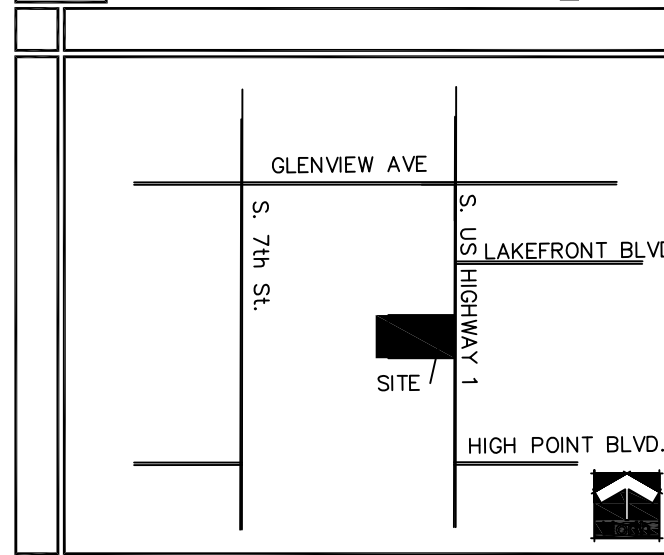
Geosyntec
 consultants

Figure:
 2c

Boca Raton, FL

November 2014

Location Map



Plant List

TREES	CODE	QTY	BOTANICAL NAME / COMMON NAME	CONTAINER	CALIPER	HEIGHT	SPREAD
	IC	6	Ilex cassine / Dahoon Holly Single Straight Trunk, Min. 5' CT.	N/A	2.5" DBH	12'	5'
	MS	6	Magnolia virginiana / Sweet Bay Single, Straight Trunk, Min 5' CT	N/A	2.5" DBH	12'	5'
	SP	3	Sabal palmetto / Cabbage Palmetto*# Slick Trunks, Hurricane Cut, Stagger Hts. in Groups	N/A	N/A	12-18' CT.	N/A
	TD	26	Taxodium distichum / Bald Cypress Single, Straight Trunk, 5' CT	N/A	2.5" DBH	12'	5'
SHRUBS	CODE	QTY	BOTANICAL NAME / COMMON NAME	CONTAINER	SPACING	HEIGHT	SPREAD
	CHR	33	Chrysobalanus icaco / Coco Plum* Full To Base	3 gal. min.	24" o.c.	18"	18"
SHRUB AREAS	CODE	QTY	BOTANICAL NAME / COMMON NAME	CONT	SPACING	HEIGHT	SPREAD
	HPC	137	Hamelia patens 'Compacta' / Dwarf Fire Bush Full	3 Gal. Min.	18" o.c.	14"	14"
	MUC	115	Muhlenbergia capillaris / Pink Muhly Full	3 Gal min	24" o.c.	18"	18"
	SBA	116	Spartina bakeri / Sand Cord Grass Full	3 Gal min	24" o.c.	18"	18"
	TDB	234	Tripsacum dactyloides nana / Dwarf Fakahatchee Grass Full	3 Gal min	24" o.c.	24"	24"
GROUND COVERS	CODE	QTY	BOTANICAL NAME / COMMON NAME	CONTAINER	SPACING	HEIGHT	SPREAD
	LAD	798	Lantana depressa / Native Lantana Full	1 gal	6"	6"	Yes
	SOD	20,305 sf	Paspalum notatum / Bahia Grass 100% Coverage, 75% Germination Required at Time of CO	sod			

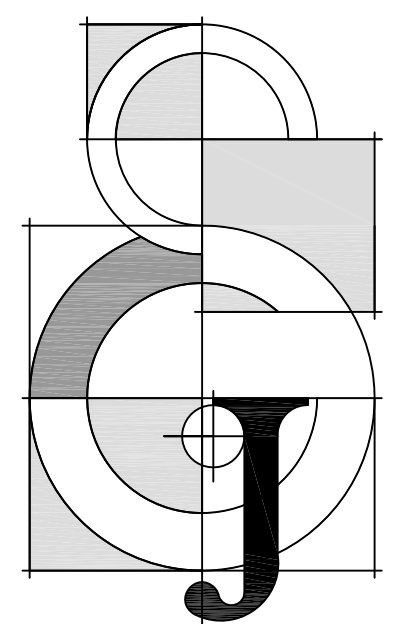
Perimeter Landscape Requirements

Category	Requirement	No. Required	No. Provided
Trees:			
North Property Line	412'	1/200 S.F.	21
South Property Line	293'	1/200 S.F.	15
East Property Line	60'	1/200 S.F.	1
West Property Line	112'	1/300 S.F.	6
TOTAL TREES			44

* 75' Diameter Canopy Tree Preserved in Lieu of (4) Trees.

Landscape Notes

- Easements shall not encroach landscape buffers more than 5 feet.
- Landscaping in right-of-way buffers shall be installed on the exterior side of walls or fences.
- Walls & fences shall be setback a min. of 10' from the ultimate R-O-W.
- FDOT Type D or F curb shall be provided along the perimeter of all landscape, open space, drainage and grassed areas adjacent to paved vehicular use areas, except where wheel stops are provided.
- Safe sight triangles shall be maintained clear of vegetation to provide unobstructed visibility between 30' and 8' above crown of road.
- Light poles, fire hydrants, electrical/mechanical equipment, signs, drainage structures, etc. shall not interfere with landscaping in terminal islands, parking islands, medians, buffers or other landscaped areas.
- All plant material is to be installed at the height, spread and DBH/Caliper shown in the Plant List, container sizes are given as a suggestion only.
- All landscape areas (including sod) shall be irrigated with an underground automatic sprinkler system providing 100% coverage.
- Trees shown on this plan are for graphic representation only. Tree spacing is based on design requirements and the trees shown on these plans attempt to accomplish that spacing while maintaining the required setbacks from utilities. Trees may be field adjusted to avoid conflicts with driveways and underground utilities. In any case the trees shall be located in the field in accordance with the planting details shown hereon.
- Trees are to be installed with a ten foot (10') separation from any water or sewer main and/or service, hydrants, and lift stations. If a ten foot (10') separation cannot be achieved, the tree can be installed with a root barrier system. Refer to the "Root Barrier" detail for installation requirements.
- All planters shall be excavated to a minimum depth of twenty-four (24) inches and back-filled with a suitable soil consisting of fifty percent (50%) composted organic matter, well-mixed with native soil. Backfill material shall be free from rock, construction debris, or other extraneous material.



Jon E. Schmidt and Associates
Landscape Architecture & Site Planning
2247 Palm Beach Lakes Blvd., Suite 101
West Palm Beach, Florida 33409
Tel. (561) 684-6141 • Fax. (561) 684-6142
E-mail: jschmidt@jesla.com
Website: www.jesla.com
License No.: LC2600232

Orkin Pest Control Facility

The City of Ft. Pierce, Florida

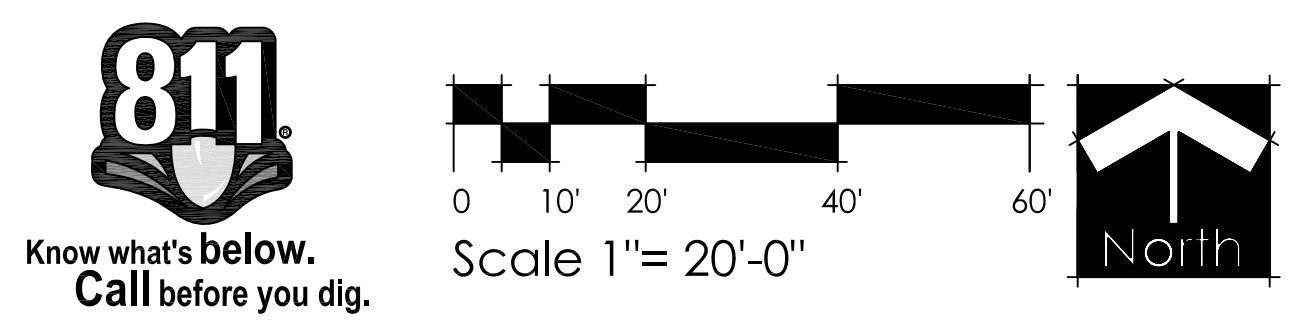
Date: 10/18/13
Scale: 1" = 20'-0"
Design By: JES
Drawn By: JES
Checked By: JES
File No. 676.01
Job No. 13-43

REVISIONS / SUBMISSIONS
11/22/13 Revised Site Plan Base
12/10/13 Revised Site Plan Base

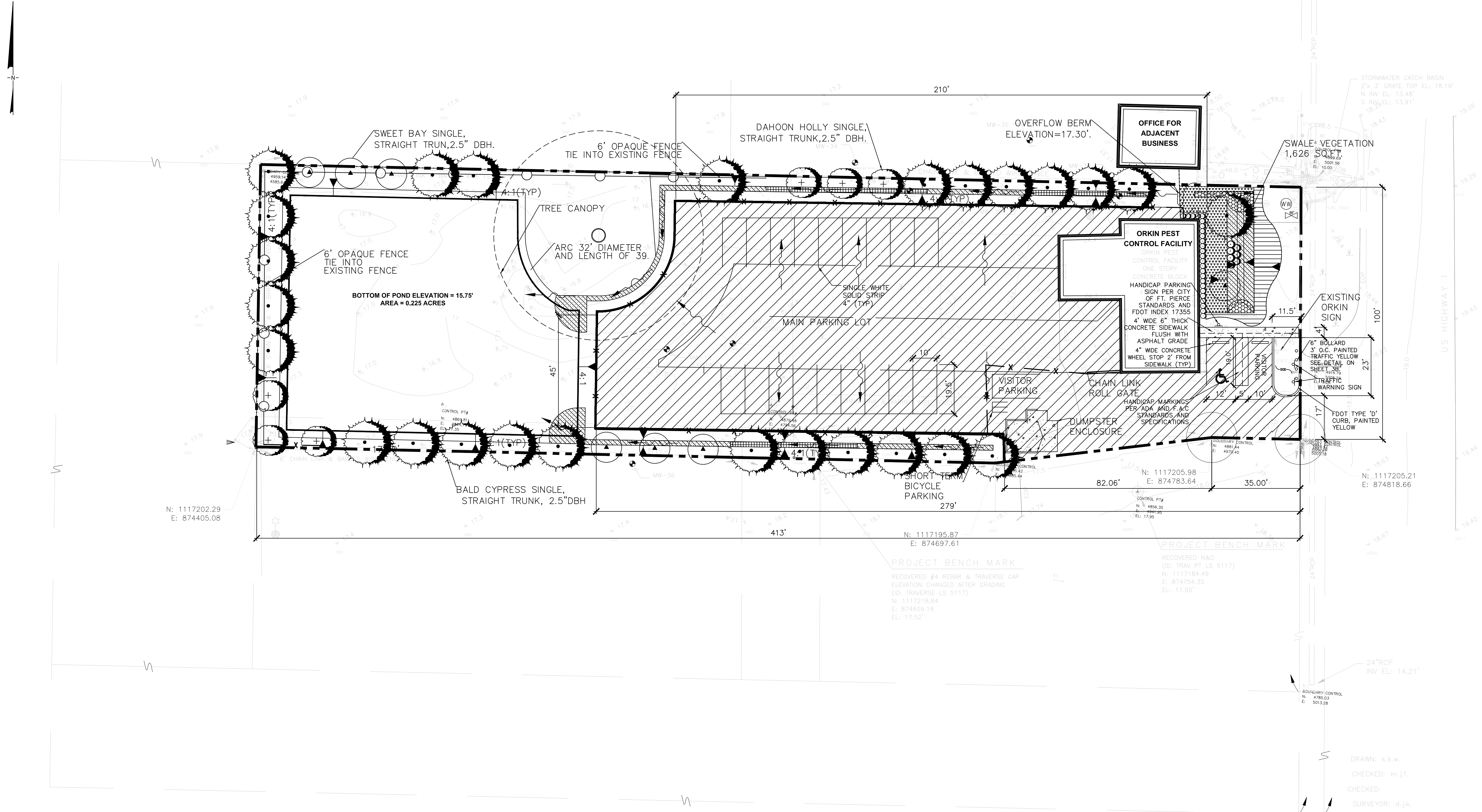
NOT VALID WITHOUT THE SIGNATURE AND ORIGINAL RAISED SEAL OF A FLORIDA LICENSED LANDSCAPE ARCHITECT.

Printed name
FLORIDA REGISTRATION NO. LA 0001638

Landscape Plan



P:\BOCA\PRJ1\CADD (PROJECTS)\OROKIN (FORT PIERCE)\2014AUGRTCS\LEE'S EDITS\G04209 SITE PLAN.DWG (21 November 2014) cchiera



LEGEND

- PROPOSED OPAQUE FENCE
- PROPOSED CHAIN LINK FENCE PER FDOT INDEX 802
- PROPOSED TOPOGRAPHY
- EXISTING TOPOGRAPHY (NOTE 1)
- PROPERTY LINE (APPROXIMATE)
- ASPHALTIC CONCRETE COVER (PROPOSED AND EXISTING)
- PROPOSED SURFACE WATER FLOW DIRECTION (POST CONSTRUCTION)
- PROPOSED CONCRETE AREA (SIDEWALK AND DUMPSTER ENCLOSURE)
- PROPOSED CONCRETE CURB (SEE DETAIL 1 IN FIGURE 2B)
- HANDICAP ACCESSIBILITY ROUTE MAXIMUM SLOPE = 2.00%

NOTES

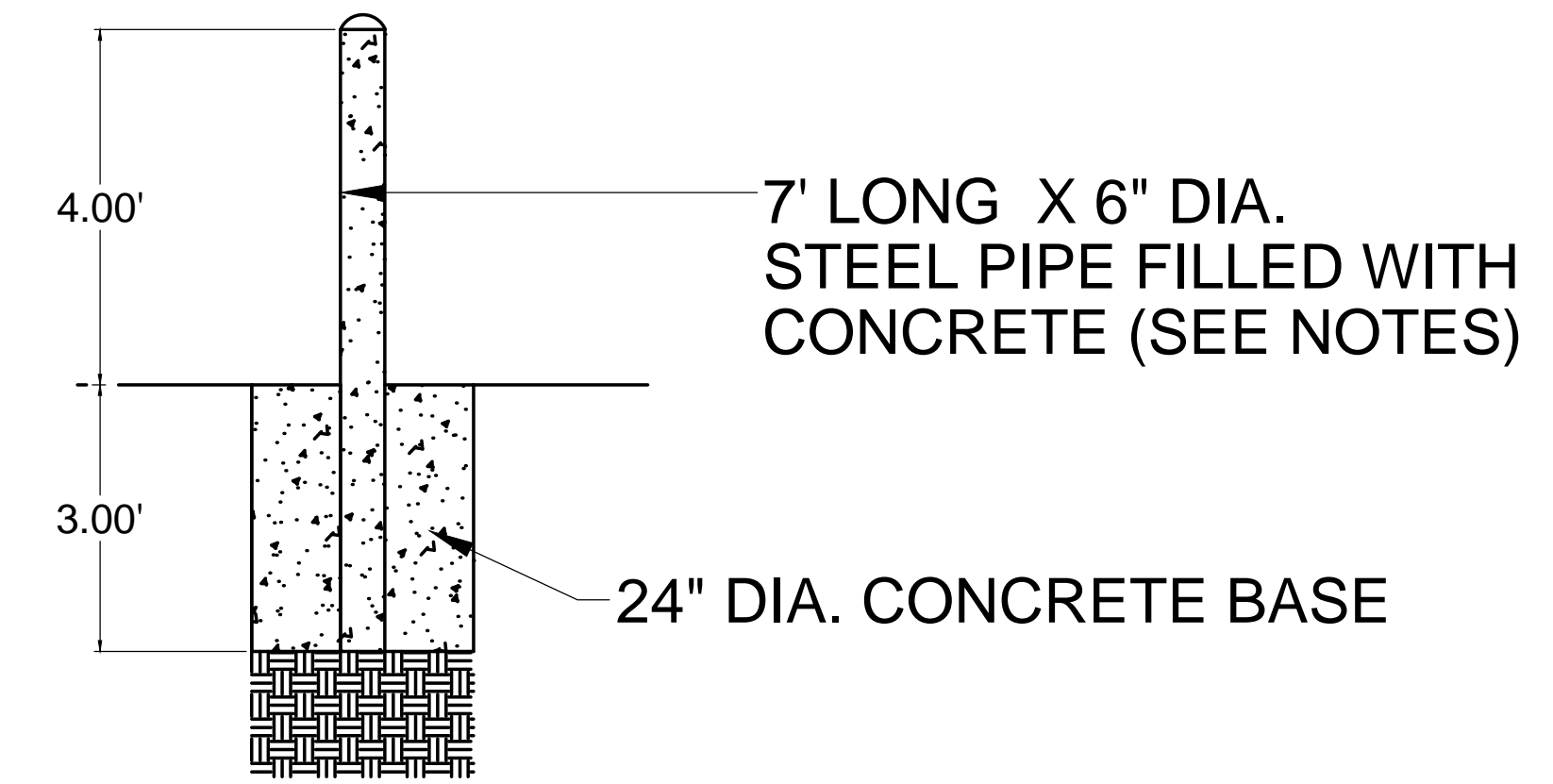
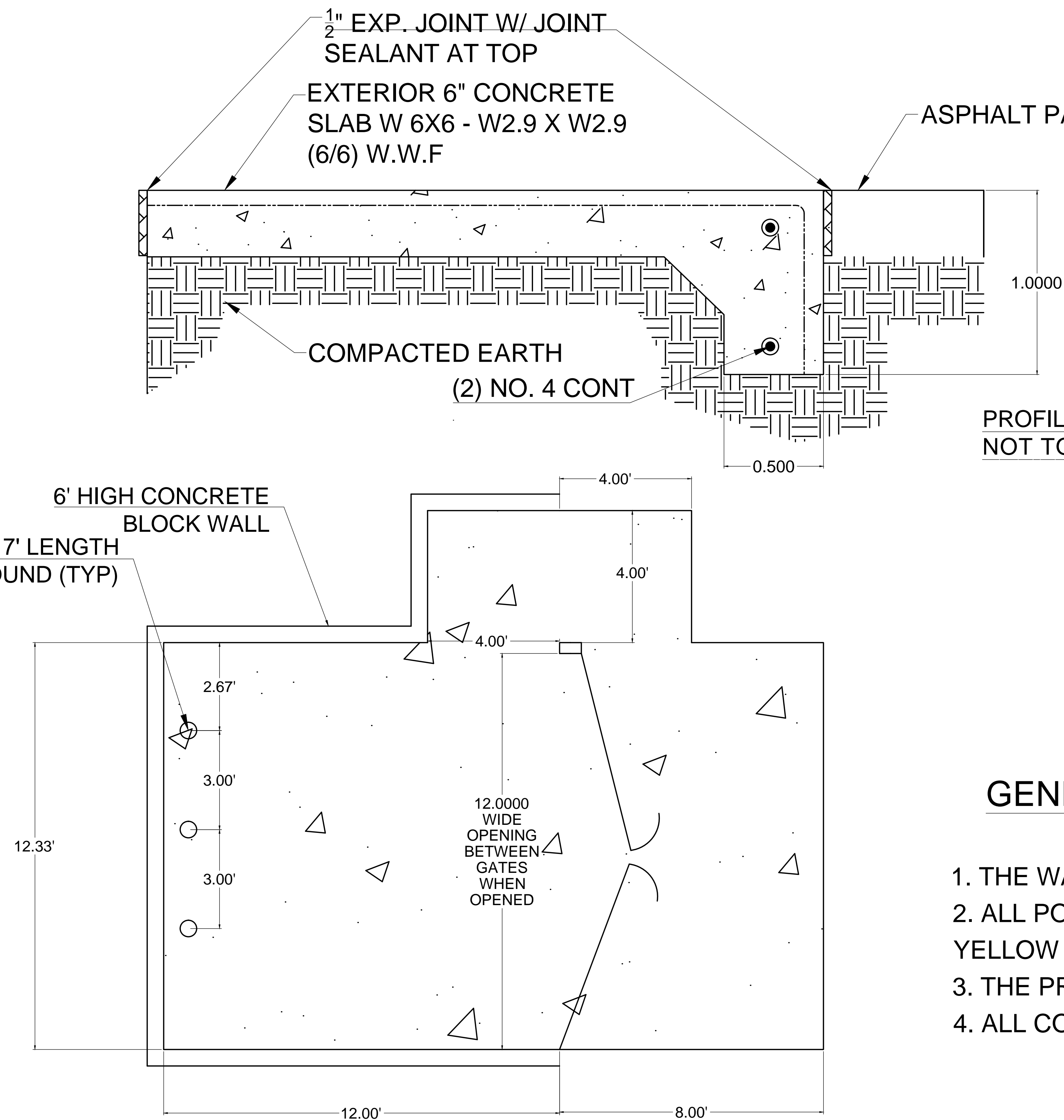
1. UNDERLYING SURVEY PREPARED BY KUGELMANN LAND SURVEYING, INC. (UPDATED DECEMBER 2012).
2. REFER TO THE LANDSCAPE DESIGN PLAN FOR DETAILED INFORMATION ON THE LANDSCAPING, ETC.
3. REFER TO THE PROPOSED GRADING PLAN FOR DETAILED INFORMATION ON THE GRADING AND DRAINAGE.
4. ALL CONSTRUCTION WILL ADHERE TO THE REQUIREMENTS SET FORTH IN THE CITY OF FORT PIERCE CODE OF ORDINANCE NO. K-421, SECTION 17.
5. HORIZONTAL COORDINATES ARE REFERENCED TO THE FLORIDA STATE PLANE COORDINATE SYSTEM, EAST ZONE, NORTH AMERICAN DATUM OF 1983 (NAD 83), 1990 ADJUSTMENT AND ARE BASED ON THE SAINT LUCIE COUNTY GPS MONUMENT "RBH", HAVING PUBLISHED COORDINATES OF N.1118364.90 FEET, E.872334.38 FEET, BASED ON THE BOUNDARY AND TOPOGRAPHIC SURVEY PREPARED BY KUGELMANN LAND SURVEYING, INC. (DATED DECEMBER 2012)
6. ELEVATIONS DEPICTED HEREON ARE REFERENCED TO THE NORTH AMERICAN VERTICAL DATUM OF 1988 (NAVD 88) AND ARE BASED ON UNITED STATES COAST AND GEODETIC SURVEY MONUMENT "B 401" HAVING A PUBLISHED ELEVATION OF 16.17 FEET, BASED ON THE BOUNDARY AND TOPOGRAPHIC SURVEY PREPARED BY KUGELMANN LAND SURVEYING, INC. (DATED DECEMBER 2012).



DRAWN: k.k.w.
CHECKED: m.j.f.
CHECKED:
SURVEYOR: d.j.k.

<p>Proposed Final Site Plan</p> <p>Orkin Pest Control Facility 3231 S, US Highway 1 Ft. Pierce, Florida 34982</p>	
	<p>Figure: 3a</p>
<p>Boca Raton, FL</p>	<p>NOVEMBER 2014</p>

P:\BOCA\PRJ1\CADD (PROJECTS)\ORKIN (FORT PIERCE)\DETAILS AND NOTES_SITE PLAN.DWG (17 November 2014) .cchiera



PROFILE
NOT TO SCALE

GENERAL NOTES FOR DUMPSTER ENCLOSURE

1. THE WALL THICKNESS OF THE PIPE IS 0.188"
2. ALL POST WILL HAVE 2 COATS OF PRIMER AND 2 COATS OF YELLOW TOP COAT.
3. THE PRIMER COAT WILL MEET THE REQUIREMENTS OF FDOT 971-5
4. ALL CONCRETE IS FDOT CLASS 1 (DUMPSTER AND SIDEWALK)

Proposed Finals Site Plan Details and Notes
for Dumpster Enclosure
Orkin Pest Control Facility
3231 S. US Highway 1
Ft. Pierce, Florida 34982

Geosyntec
consultants

Figure:

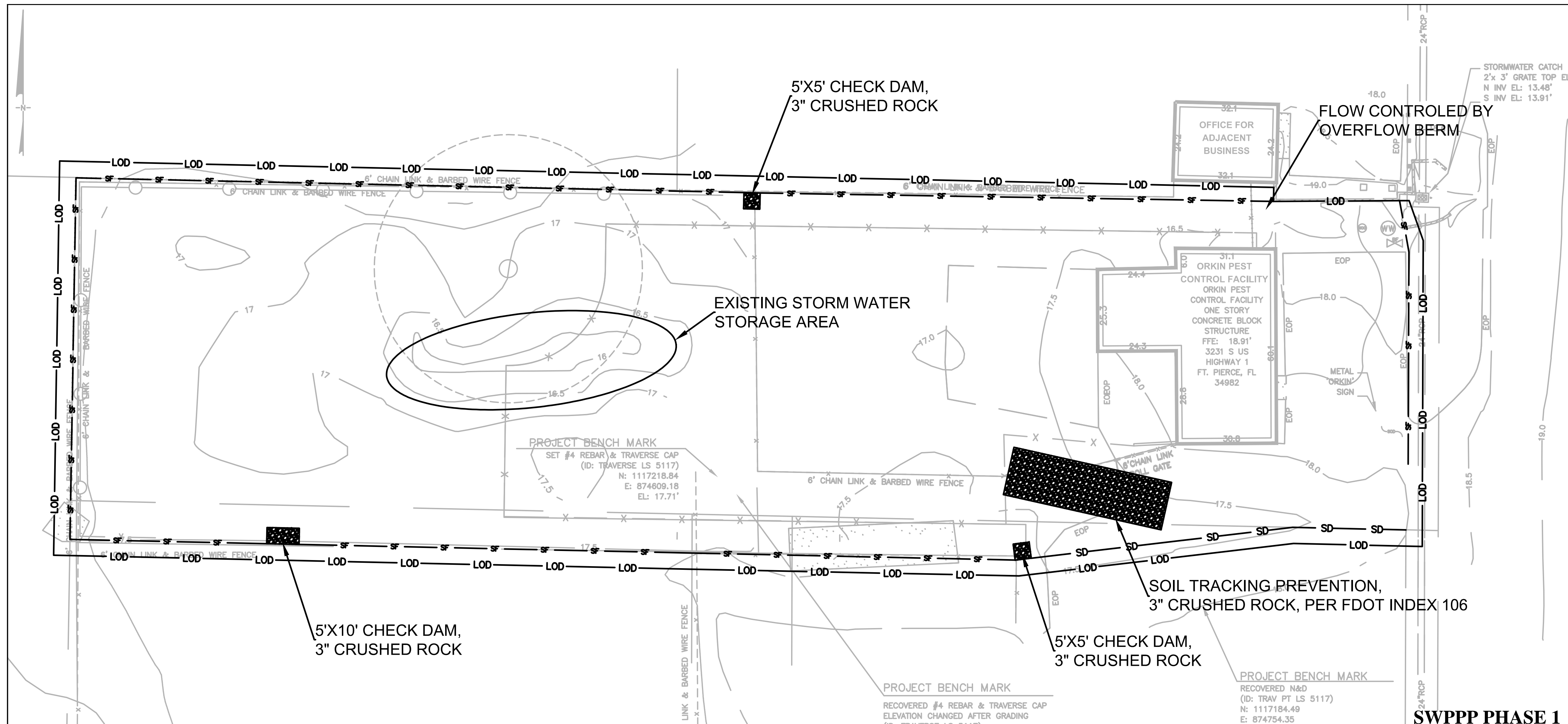
3b

Boca Raton, FL

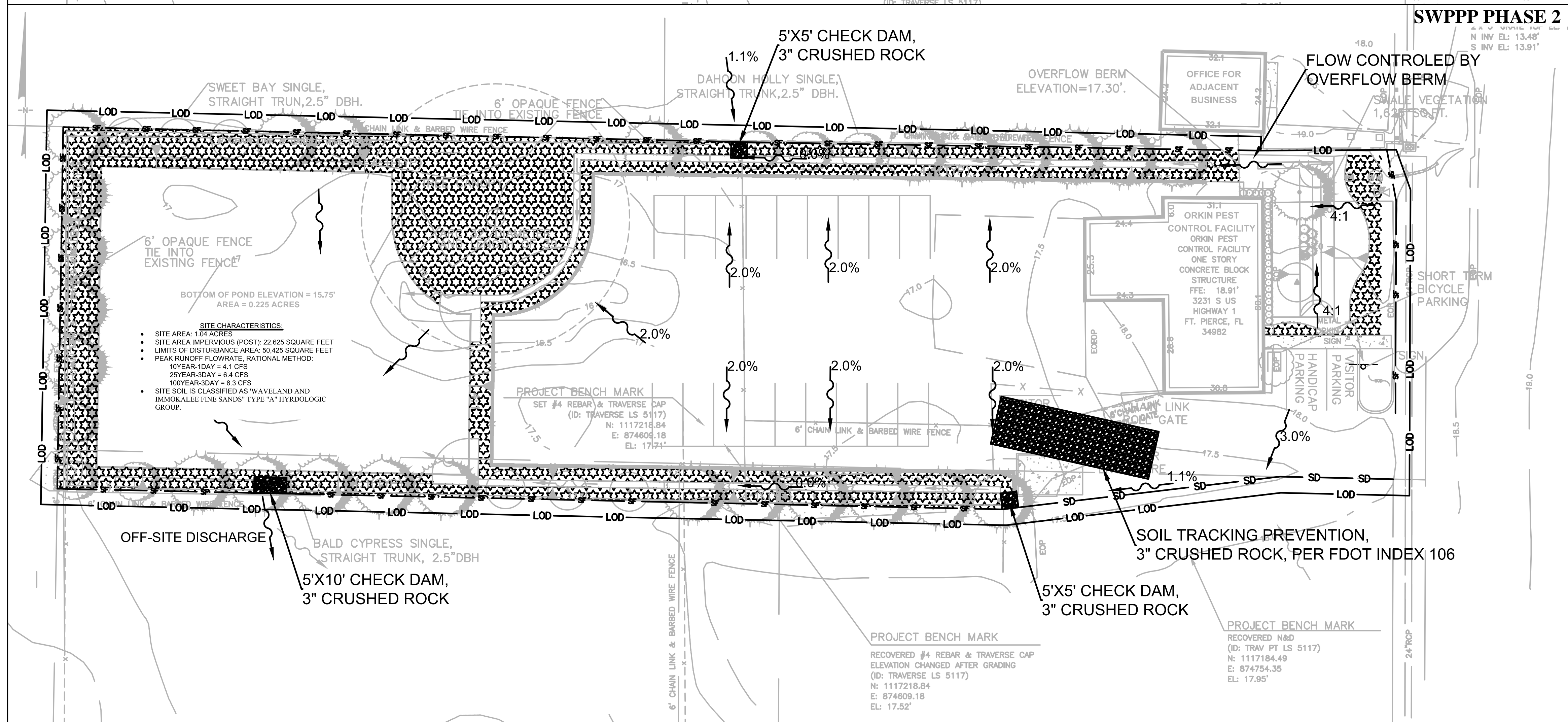
November 2013

NOTES

1. UNDERLYING SURVEY PREPARED BY KUGELMANN LAND SURVEYING, INC. (UPDATED DECEMBER 2012).
2. REFER TO THE LANDSCAPE DESIGN PLAN FOR DETAILED INFORMATION ON THE LANDSCAPING, ETC.
3. REFER TO THE PROPOSED GRADING PLAN FOR DETAILED INFORMATION ON THE GRADING AND DRAINAGE.
4. DRIVEWAY FROM US HIGHWAY IS THE REQUIRED 24 FEET UPON SHARED ACCESS AGREEMENT REACH WITH THE PROPERTY OWNER TO THE SOUTH ON DD MMM 2014.
5. ALL CONSTRUCTION WILL ADHERE TO THE REQUIREMENTS SET FORTH IN THE CITY OF FORT PIERCE CODE OF ORDINANCE NO. K-421, SECTION 17.
6. HORIZONTAL COORDINATES ARE REFERENCED TO THE FLORIDA STATE PLANE COORDINATE SYSTEM, EAST ZONE, NORTH AMERICAN DATUM OF 1983 (NAD 83), 1990 ADJUSTMENT AND ARE BASED ON THE SAINT LUCIE COUNTY GPS MONUMENT "RBH", HAVING PUBLISHED COORDINATES OF N.1118364.90 FEET, E.872334.38 FEET.
7. ELEVATIONS DEPICTED HEREON ARE REFERENCED TO THE NORTH AMERICAN VERTICAL DATUM OF 1988 (NAVD 88) AND ARE BASED ON UNITED STATES COAST AND GEODETIC SURVEY MONUMENT "B 401" HAVING A PUBLISHED ELEVATION OF 16.17 FEET.
8. SILT FENCE TO BREAK AT BOTH ENDS OF THE CHECK DAMS TO ALLOW STORMWATER TO FLOW ONTO THE SITE AND DISCHARGE FROM THE SITE.
9. REMAINING DISTURBED AREA NOT COVERED WITH SOD ARE TO BE SEEDED.



SWPPP PHASE 1
SWPPP PHASE 2



LEGEND

- PROPOSED OPAQUE FENCE
- PROPOSED CHAIN LINK FENCE
- EXISTING TOPOGRAPHY (NOTE 1)
- PROPERTY LINE (APPROXIMATE)
- PROPOSED SURFACE WATER FLOW DIRECTION (POST CONSTRUCTION)
- PROPOSED CONCRETE AREA (SIDEWALK AND DUMPSTER ENCLOSURE)
- SILT DIKE (SEE DETAIL ON SHEET 4B)
- SILT FENCE (PER FDOT INDEX 102)
- SOIL TRACKING PREVENTION (PER FDOT INDEX 106)
- LIMITS OF DISTURBANCE
- PERMANENT SOD



SWPPP Phase 1 & 2

Orkin Pest Control Facility
3231 S, US Highway 1
Ft. Pierce, Florida 34982

Geosyntec
consultants

Boca Raton, FL

August 2014

Figure:

4a

GENERAL NOTES

PRIOR TO ISSUANCE OF THE BUILDING PERMIT, THE PROPERTY OWNER, SHALL EXECUTE THE "CITY OF FORT PIERCE ENGINEERING DEPARTMENT EROSION AND SEDIMENT CONTROL AFFIDAVIT".

THE PROJECT SITE IS 1.04 ACRES AND IS LOCATED WITHIN THE CITY OF FORT PIERCE LIMITS ON U.S. HIGHWAY 1. THE PROJECT SITE IS LOCATED WITHIN SECTION 27 OF TOWNSHIP 35 SOUTH, RANGE 40 EAST, AND IS WITHIN THE JURISDICTION OF THE SOUTH FLORIDA WATER MANAGEMENT DISTRICT (SFWMD). THE SITE IS CURRENTLY A COMMERCIAL FACILITY OWNED AND OPERATED BY ROLLINS CONTINENTAL INC.

THE PURPOSE OF THE PROPOSED CONSTRUCTION IS TO CONSTRUCT AN ENGINEER CONTROL AS PROPOSED IN THE SITE REMEDIAL ACTION PLAN, APPROVED BY FDEP. THE ENGINEER CONTROL'S PURPOSE IS TO BOTH REDUCE THE TRANSPORT OF SITE CONSTITUENTS OF CONCERN AND MINIMIZE HUMAN EXPOSURE TO IMPACTED SOIL.

THE PERMITTEE SHALL FILE FOR AN FDEP NPDES NOTICE OF INTENT (NOI) TO USE GENERIC PERMIT FOR STORMWATER DISCHARGES FROM LARGE AND SMALL CONSTRUCTION ACTIVITIES A MINIMUM OF 48 HOURS PRIOR TO EARTH DISTURBING ACTIVITIES.

PRIMARY PERMITTEE (TO BE IDENTIFIED AND PRINTED BY CONTRACTOR):
CONTRACTOR:

SITE DESCRIPTION

NATURE OF CONSTRUCTION ACTIVITY: CLEARING, REGRADING, STOCKPILING OF SOILS, AND STABILIZATION OF DISTURBED AREAS.

PROJECT SEQUENCING: THE FOLLOWING IS A DESCRIPTION OF THE INTENDED PHASE I AND PHASE 2 SEQUENCES OF MAJOR ACTIVITIES THAT DISTURB SOILS. THE BELOW SEQUENCING IS CONSISTENT WITH THE SWPPP SHEETS PROVIDED HEREIN.

PHASE 1:

1. SITE MOBILIZATION OF CONTRACTOR'S SITE PREPARATION EARTHWORK AND CONSTRUCTION EQUIPMENT.
2. IDENTIFICATION OF CONTRACTOR'S EQUIPMENT LAY-DOWN AND SOIL STOCKPILE AREAS. RECORD THESE LOCATIONS ON THE SWPPP SHEETS.
3. PROVIDE CONTRACTOR'S HEALTH & SAFETY PLAN IN ACCORDANCE WITH CONTRACT DOCUMENTS AND APPROVED WORK SCHEDULE.
4. INSTALLATION OF EROSION CONTROL SILT FENCING, SILT DIKE, SYNTHETIC HAY BALES, TEMPORARY CONSTRUCTION ENTRANCE/EXITS AND ANY OTHER EROSION & SEDIMENT CONTROL NEEDS.
5. DEMOLITION OF EXISTING ON-SITE STRUCTURES PER PLANS.
6. REMOVE OR RELOCATE WASTE MATERIAL OR STRUCTURES WITHIN WORK AREAS THAT HAVE BEEN APPROVED FOR REMOVAL OR RELOCATION.
7. INSTALLATION OF ANY ADDITIONAL OR RELOCATED SITE SECURITY AND TEMPORARY SAFETY FENCING NECESSARY FOR THE WORK IN ACCORDANCE WITH CONSTRUCTION SCHEDULE.
8. PERFORM CLEARING, GRUBBING AND STRIPPING OF SITE IN ACCORDANCE WITH CONSTRUCTION SCHEDULE.
9. EXCAVATE AND HAUL OFF MATERIAL NECESSARY IN ACCORDANCE WITH CONSTRUCTION PLANS. ALL OTHER MATERIAL MUST BE STOCKPILED ON-SITE. ALL STOCKPILE AREAS SHALL BE MAINTAINED WITHIN THE IDENTIFIED LIMITS OF DISTURBANCE. CONTRACTOR SHALL NOTE THE LOCATION OF STOCKPILES WITHIN THE LIMITS OF DISTURBANCE AS THEY CHANGE. ADDITIONAL BMP CONTROLS SHALL BE IMPLEMENTED IF VEHICLE TRACK-OUT IS OBSERVED.
10. STABILIZE AREAS THAT HAVE BEEN INACTIVE FOR A PERIOD OF 7 DAYS BY IMPLEMENTING TEMPORARY STABILIZATION BMP CONTROLS.

PHASE 2:

1. IMPLEMENT ADDITIONAL BMPS DURING PHASE II AS NECESSARY TO PREVENT EROSION OF SEDIMENT AND EXPOSED WASTE MATERIALS.
2. INSTALL PROPOSED STORMWATER INFRASTRUCTURE.
3. BACKFILL EXCAVATED AREAS WITH CLEAN FILL PER CONSTRUCTION SPECIFICATIONS AND COMPACT.
4. REMOVE ALL TEMPORARY CONTROL BMPS AND STABILIZE ANY AREAS DISTURBED BY THE REMOVAL OF EROSION CONTROLS. PREPARE SITE FOR FINAL SODDING, AS INDICATED ON PLANS, AND MONITOR AREAS UNTIL FINAL STABILIZATION IS ACHIEVED.
5. NOI PERMITTEE TO FILE FOR NOTICE OF TERMINATION (NOT) WITH FDEP.

THE INSTALLATION OF EROSION AND SEDIMENTATION CONTROL MEASURES AND PRACTICES SHALL OCCUR PRIOR TO LAND DISTURBING ACTIVITIES.

AREA ESTIMATES:

1. ESTIMATED TOTAL ON-SITE AREA: APPROXIMATELY 1.04 ACRES
2. ESTIMATED TOTAL LIMITS OF DISTURBANCE AREA: 1.16 ACRES.

SITE CHARACTERISTICS:

1. THE SITE IS COMMERCIAL FACILITY WITHIN URBAN DOWNTOWN FORT PIERCE. NO WETLAND IMPACTS ARE PROPOSED OR PERMITTED.
2. SOIL DESCRIPTION - BASED ON THE NATURAL RESOURCES CONSERVATION SERVICE (NRCS) WEB SOIL SURVEY FOR PROJECT AREA, THE SOILS FOR THIS PROJECT AREA ARE GENERALLY 'WAVELAND AND IMMOKALEE FINE SANDS', TYPE 'A/D' HYDROLOGIC SOILS.
3. EXISTING DRAINAGE PATTERNS AND DRAINAGE AREAS ARE PROVIDED ON THE SWPPP PHASE I MAP.

SITE MAP OF CONSTRUCTION ACTIVITIES: SEE THE SWPPP DRAWINGS PRESENTED HEREIN.

SURFACE WATER IDENTIFICATION:
RECEIVING WATERS:

SITE: INDIAN RIVER.

OUTFALL LOCATION:
LATITUDE: 27°24'12.30" NORTH
LONGITUDE: 80°18'59.46" WEST

CONTROLS

EROSION AND SEDIMENT CONTROLS

- THIS SWPPP PRESENTS THE BMPS IN TWO PARTS: THE PRE-CONSTRUCTION SITE MAP CONSISTS OF BMPS RELEVANT TO THE EXISTING SITE CONDITIONS AND PRIOR TO ANY CONSTRUCTION ACTIVITIES TAKING PLACE (I.E. PHASE I SWPPP), AND THE FINAL INFRASTRUCTURE IMPROVEMENTS AND PERMANENTLY STABILIZED SITE (I.E. PHASE II SWPPP).
- **THE ESCAPE OF SEDIMENT FROM THE SITE SHALL BE PREVENTED BY THE INSTALLATION OF EROSION AND SEDIMENT CONTROL MEASURES AND PRACTICES PRIOR TO, OR CONCURRENT WITH, LAND DISTURBING ACTIVITIES.**

STORM WATER MANAGEMENT - STORMWATER MANAGEMENT CONSISTS OF TWO SEPARATE ELEMENTS, INCLUDING:

- TEMPORARY STRUCTURAL EROSION AND SEDIMENTATION CONTROLS. TEMPORARY CONTROLS INCLUDE SILT FENCING AND SILT DIKE AROUND THE PERIMETER OF THE SITE, AND A SOIL TRACKING PREVENTION DEVICE AT THE CONSTRUCTION ENTRANCE/EXIT TO PREVENT OFF-SITE TRACK-OUT.
- PERMANENT STRUCTURAL EROSION AND SEDIMENTATION CONTROLS. PERMANENT CONTROLS INCLUDE SEEDING OF ALL DISTURBED AREAS.

OTHER CONTROLS

- WASTE DISPOSAL - WASTE COLLECTION AREAS SHALL BE LOCATED AWAY FROM STREETS, GUTTERS, WATERCOURSES, AND STORM DRAINS. ALL TRASH AND CONSTRUCTION DEBRIS REMOVED FROM THE SITE WILL BE HAULED TO AN APPROVED LANDFILL. NO NEW CONSTRUCTION WASTE MATERIAL WILL BE BURIED ON-SITE OR DISCHARGED TO WATERS OF THE STATE. ALL PERSONNEL WILL RECEIVE INSTRUCTION REGARDING THE CORRECT PROCEDURE FOR WASTE DISPOSAL. EMPLOYEE WASTE AND OTHER LOOSE MATERIALS WILL BE COLLECTED SO AS TO PREVENT THE RELEASE OF "FLOATABLES" DURING RUNOFF EVENTS.
- OFF-SITE VEHICLE TRACKING AND DUST GENERATION- CONSTRUCTION ENTRANCE/EXIST WILL BE INSTALLED AT THE SITE ENTRANCE AND MAINTAINED AS NEEDED TO PREVENT OFF-SITE TRACK-OUT. TECHNIQUES SHALL BE EMPLOYED TO PREVENT THE BLOWING OF DUST OR SEDIMENT FROM THE SITE SUCH AS APPLYING WATER TO EXPOSED AND DRY SOIL. THE PAVED STREETS ADJACENT TO THE SITE AND PROJECT AREA SHALL BE SWEEP AND SCRAPED REGULARLY TO REMOVE ANY EXCESS MUD, DIRT, OR ROCK TRACKED FROM THE CONSTRUCTION AREA.
- SANITARY WASTE - ALL WORKERS, THROUGHOUT THE LIFE OF THE PROJECT WILL BE PROVIDED PORTABLE SANITARY UNITS, FOR USE. A LICENSED SANITARY WASTE MANAGEMENT CONTRACTOR WILL REGULARLY COLLECT ALL SANITARY WASTE FROM THE PORTABLE UNITS.
- SOIL STOCKPILES MUST BE STABILIZED OR COVERED AT THE END OF EACH WORKDAY.

INSPECTIONS

THE CITY OF FORT PIERCE ENGINEERING DEPARTMENT SHALL MAKE INSPECTIONS. PLANS FOR GRADING, STRIPPING, EXCAVATING, AND FILING WORK BEARING THE STAMP OF APPROVAL OF THE CITY ENGINEER SHALL BE MAINTAINED AT THE SITE DURING THE DURATION OF THE WORK. TO OBTAIN INSPECTIONS, THE PERMITTEE SHALL NOTIFY THE CITY OF FORT PIERCE ENGINEERING DEPARTMENT AT LEAST TWO (2) WORKING DAYS BEFORE THE FOLLOWING:

1. START OF CONSTRUCTION;
2. INSTALLATION OF SEDIMENT AND EROSION MEASURES;
3. COMPLETION OF SITE CLEARING;
4. COMPLETION OF ROUGH GRADING;
5. COMPLETION OF FINAL GRADING;
6. CLOSE OF THE CONSTRUCTION SEASON;
7. COMPLETION OF FINAL LANDSCAPING.

INSPECTIONS MUST BE PERFORMED BY A "QUALIFIED INSPECTOR" THE FDEP GENERIC PERMIT FOR STORMWATER DISCHARGE FROM LARGE AND SMALL CONSTRUCTION ACTIVITIES DEFINES A QUALIFIED INSPECTOR AS A PERSON THAT:

1. HAS SUCCESSFULLY COMPLETED AND MET ALL REQUIREMENTS NECESSARY TO BE FULLY CERTIFIED THROUGH THE DEP STORMWATER EROSION AND SEDIMENTATION CONTROL INSPECTOR TRAINING PROGRAM;
2. HAS SUCCESSFULLY COMPLETED AN EQUIVALENT FORMAL TRAINING PROGRAM; OR
3. IS QUALIFIED BY OTHER TRAINING OR PRACTICAL EXPERIENCE IN THE FIELD OF STORMWATER POLLUTION PREVENTION AND EROSION AND SEDIMENTATION CONTROL.

AT LEAST ONCE EVERY SEVEN CALENDAR DAYS AND WITHIN 24 HOURS OF THE END OF A STORM THAT IS 0.50 INCHES OR GREATER, A QUALIFIED INSPECTOR SHALL INSPECT ALL POINTS OF DISCHARGE INTO SURFACE WATERS OF THE STATE OR AN MS4; DISTURBED AREAS OF THE CONSTRUCTION SITE THAT HAVE NOT BEEN FINALLY STABILIZED; AREAS USED FOR STORAGE OF MATERIALS THAT ARE EXPOSED TO PRECIPITATION; STRUCTURAL CONTROLS; AND LOCATIONS WHERE VEHICLES ENTER OR EXIT THE SITE AS FOLLOWS:

- A. DISTURBED AREAS AND AREAS USED FOR STORAGE OF MATERIALS THAT ARE EXPOSED

TO PRECIPITATION SHALL BE INSPECTED FOR EVIDENCE OF, OR THE POTENTIAL FOR, POLLUTANTS ENTERING THE STORMWATER SYSTEM. THE STORMWATER MANAGEMENT SYSTEM AND EROSION AND SEDIMENT CONTROL MEASURES IDENTIFIED IN THE PLAN SHALL BE OBSERVED TO ENSURE THAT THEY ARE OPERATING CORRECTLY. DISCHARGE LOCATIONS OR POINTS SHALL BE INSPECTED TO ASCERTAIN WHETHER EROSION AND SEDIMENT CONTROL AND STORMWATER TREATMENT MEASURES ARE EFFECTIVE IN PREVENTING OR MINIMIZING THE DISCHARGE OF POLLUTANTS, INCLUDING RETAINING SEDIMENT ONSITE PURSUANT TO RULE 62-40.432, F.A.C. LOCATIONS WHERE VEHICLES ENTER OR EXIT THE SITE SHALL BE INSPECTED FOR EVIDENCE OF OFFSITE SEDIMENT TRACKING.

- B. BASED ON THE RESULTS OF THE INSPECTION, ALL MAINTENANCE OPERATIONS NEEDED TO ASSURE PROPER OPERATION OF ALL CONTROLS, BMPS, PRACTICES OR MEASURES IDENTIFIED IN THE STORMWATER POLLUTION PREVENTION PLAN SHALL BE DONE IN A TIMELY MANNER, BUT IN NO CASE LATER THAN 7 CALENDAR DAYS FOLLOWING THE INSPECTION. IF NEEDED, POLLUTION PREVENTION CONTROLS, BMPS AND MEASURES IDENTIFIED IN THE PLAN SHALL BE REVISED AS APPROPRIATE, BUT IN NO CASE LATER THAN 7 CALENDAR DAYS FOLLOWING THE INSPECTION. SUCH MODIFICATIONS SHALL PROVIDE FOR TIMELY IMPLEMENTATION OF ANY CHANGES TO THE PLAN WITHIN 7 CALENDAR DAYS FOLLOWING THE INSPECTION.

- C. A REPORT SUMMARIZING THE SCOPE OF THE INSPECTION; NAME(S) AND QUALIFICATIONS OF PERSONNEL MAKING THE INSPECTION; THE DATE(S) OF THE INSPECTION; RAINFALL DATA; MAJOR OBSERVATIONS RELATING TO THE IMPLEMENTATION OF THE STORMWATER POLLUTION PREVENTION PLAN; AND ACTIONS TAKEN IN ACCORDANCE WITH PARAGRAPH V.D.4.B. OF THE GENERIC PERMIT, SHALL BE MADE AND RETAINED, IN ACCORDANCE WITH PART VI OF THE GENERIC PERMIT, AS PART OF THE STORMWATER POLLUTION PREVENTION PLAN. SUCH REPORTS SHALL IDENTIFY ANY INCIDENTS OF NON-COMPLIANCE. WHERE A REPORT DOES NOT IDENTIFY ANY INCIDENTS OF NON-COMPLIANCE, THE REPORT SHALL CONTAIN A CERTIFICATION THAT THE FACILITY IS IN COMPLIANCE WITH THE STORMWATER POLLUTION PREVENTION PLAN AND THIS PERMIT. THE REPORT SHALL BE SIGNED IN ACCORDANCE WITH PART VII.C. OF THE GENERIC PERMIT.

MAINTENANCE

MAINTENANCE OF VEGETATION, EROSION AND SEDIMENT CONTROL MEASURES AND OTHER PROTECTIVE MEASURES IDENTIFIED IN THE SWPPP SHALL BE PERFORMED IN ACCORDANCE WITH SCHEDULES AND PROCEDURES SET FORTH IN "THE FLORIDA STORMWATER, EROSION, AND SEDIMENTATION CONTROL INSPECTOR'S MANUAL".

EROSION CONTROL MEASURES WILL BE MAINTAINED AT ALL TIMES. IF FULL IMPLEMENTATION OF THE APPROVED PLAN DOES NOT PROVIDE FOR EFFECTIVE EROSION AND SEDIMENT CONTROL, ADDITIONAL EROSION AND SEDIMENT CONTROL MEASURES SHALL BE IMPLEMENTED TO CONTROL OR TREAT THE SEDIMENT SOURCE.

RETENTION OF RECORDS

1. THE PERMITTEE SHALL RETAIN COPIES OF STORMWATER POLLUTION PREVENTION PLANS AND ALL REPORTS REQUIRED BY THIS PERMIT, AND RECORDS OF ALL DATA USED TO COMPLETE THE NOTICE OF INTENT TO BE COVERED BY THIS PERMIT, FOR A PERIOD OF AT LEAST THREE YEARS FROM THE DATE THAT THE SITE IS FINALLY STABILIZED.
2. THE PERMITTEE SHALL RETAIN A COPY OF THE STORMWATER POLLUTION PREVENTION PLAN AND ALL REPORTS, RECORDS AND DOCUMENTATION REQUIRED BY THIS PERMIT AT THE CONSTRUCTION SITE, OR AN APPROPRIATE ALTERNATIVE LOCATION AS SPECIFIED IN THE NOI, FROM THE DATE OF PROJECT INITIATION TO THE DATE OF FINAL STABILIZATION.
3. KEEPING PLANS CURRENT - THE PRIMARY PERMITTEE SHALL AMEND THE PLAN WHENEVER THERE IS A CHANGE IN DESIGN, CONSTRUCTION, OPERATION, OR MAINTENANCE, WHICH HAS A SIGNIFICANT EFFECT ON BMPS WITH A HYDRAULIC COMPONENT (I.E., THOSE BMPS WHERE THE DESIGN IS BASED UPON RAINFALL INTENSITY, DURATION AND RETURN FREQUENCY OF STORMS) OR IF THE PLAN PROVES TO BE INEFFECTIVE IN ELIMINATING OR SIGNIFICANTLY MINIMIZING POLLUTANTS FROM SOURCES IDENTIFIED IN THE PLAN. AMENDMENTS TO THE PLAN MUST BE CERTIFIED BY A DESIGN PROFESSIONAL AS PROVIDED IN THE GENERIC PERMIT.

SWPPP CERTIFICATION FOR OPERATOR / PERMITTEE

"I CERTIFY UNDER PENALTY OF LAW THAT THIS DOCUMENT AND ALL ATTACHMENTS WERE PREPARED UNDER MY DIRECTION OR SUPERVISION IN ACCORDANCE WITH A SYSTEM DESIGNED TO ASSURE THAT QUALIFIED PERSONNEL PROPERLY GATHERED AND EVALUATED THE INFORMATION SUBMITTED. BASED ON MY INQUIRY OF THE PERSON OR PERSONS WHO MANAGE THE SYSTEM, OR THOSE PERSONS DIRECTLY RESPONSIBLE FOR GATHERING THE INFORMATION, THE INFORMATION SUBMITTED IS, TO THE BEST OF MY KNOWLEDGE AND BELIEF, TRUE, ACCURATE, AND COMPLETE. I AM AWARE THAT THERE ARE SIGNIFICANT PENALTIES FOR SUBMITTING FALSE INFORMATION, INCLUDING THE POSSIBILITY OF FINE AND IMPRISONMENT FOR KNOWING VIOLATIONS."

SIGNATURE OF PERMITTEE

PRINTED NAME OF PERMITTEE

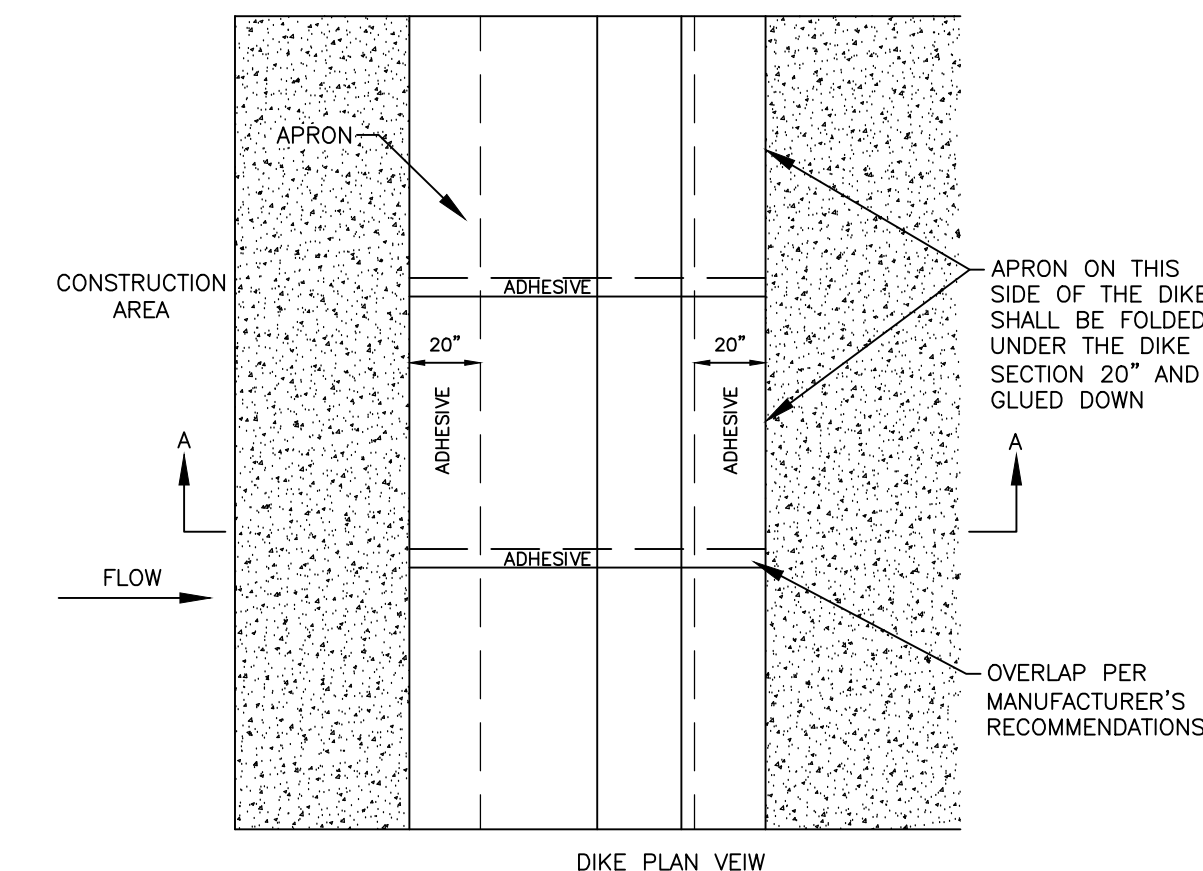
SWPPP CERTIFICATIONS FOR CONTRACTOR/SUBCONTRACTOR

"I CERTIFY UNDER PENALTY OF LAW THAT I UNDERSTAND, AND SHALL COMPLY WITH, THE TERMS AND CONDITIONS OF THE STATE OF FLORIDA GENERIC PERMIT FOR STORMWATER DISCHARGE FROM LARGE AND SMALL CONSTRUCTION ACTIVITIES AND THIS STORMWATER POLLUTION PREVENTION PLAN PREPARED THEREUNDER."

SIGNATURE OF (SUB)CONTRACTOR

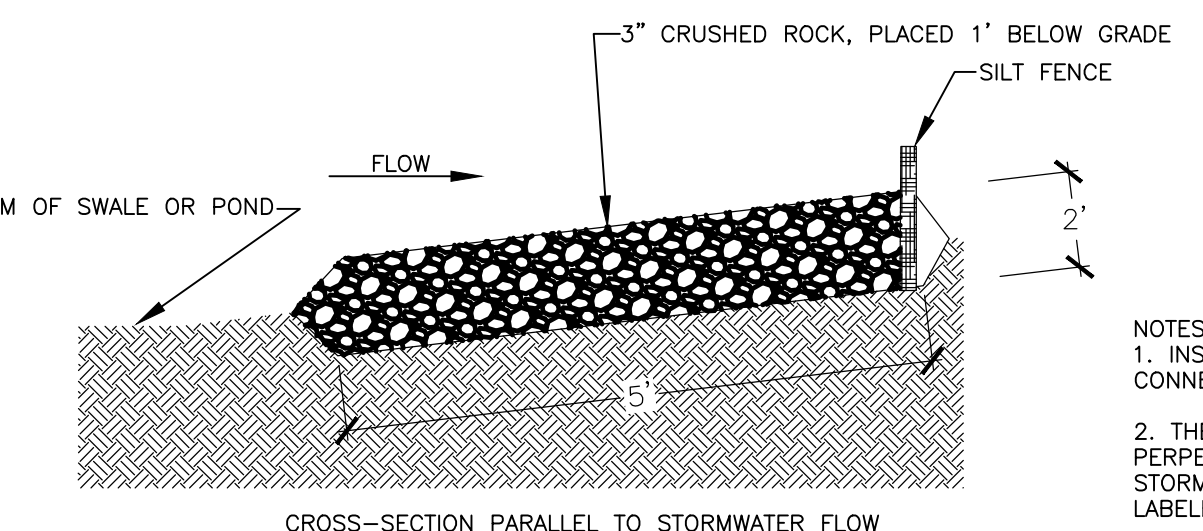
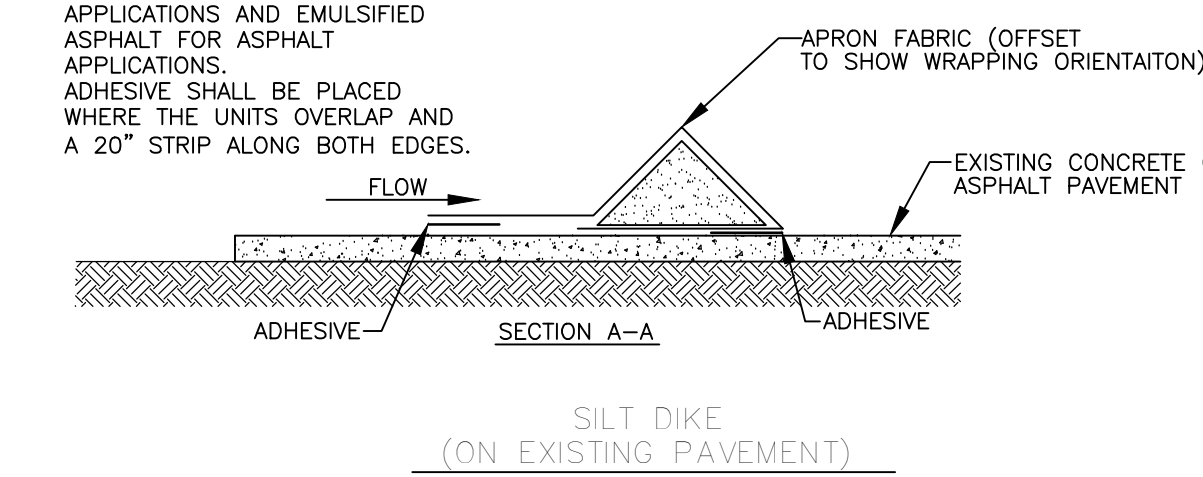
PRINTED NAME OF SUB(CONTRACTOR)

(ADDITIONAL COPIES OF THIS SHEET SHALL BE PRINTED AS REQUIRED PER PART V.D.6.B. OF THE FLORIDA GENERIC PERMIT FOR CONTRACTOR/SUBCONTRACTOR CERTIFICATIONS).



NOTES:
1. INSTALLED SILT DIKE UNIT SHALL HAVE CONTINUOUS AND FIRM CONTACT WITH PAVEMENT.

2. ADHESIVES SHALL BE LIQUID NAIL OR APPROVED EQUAL FOR CONCRETE, PAVEMENT APPLICATIONS AND EMULSIFIED ASPHALT FOR ASPHALT APPLICATIONS. ADHESIVE SHALL BE PLACED WHERE THE UNITS OVERLAP AND A 20" STRIP ALONG BOTH EDGES.



NOTES:
1. INSTALLED SILT FENCE SHOULD CONNECT INTO THE CHECK DAM.
2. THE CHECK DAM DIMENSION, PERPENDICULAR TO THE STORMWATER FLOW DIRECTION, IS LABELED ON THE PLANS.

SWPPP Notes

Orkin Pest Control Facility
3231 S, US Highway 1
Ft. Pierce, Florida 34982



Figure:

4b

Boca Raton, FL

August 2014