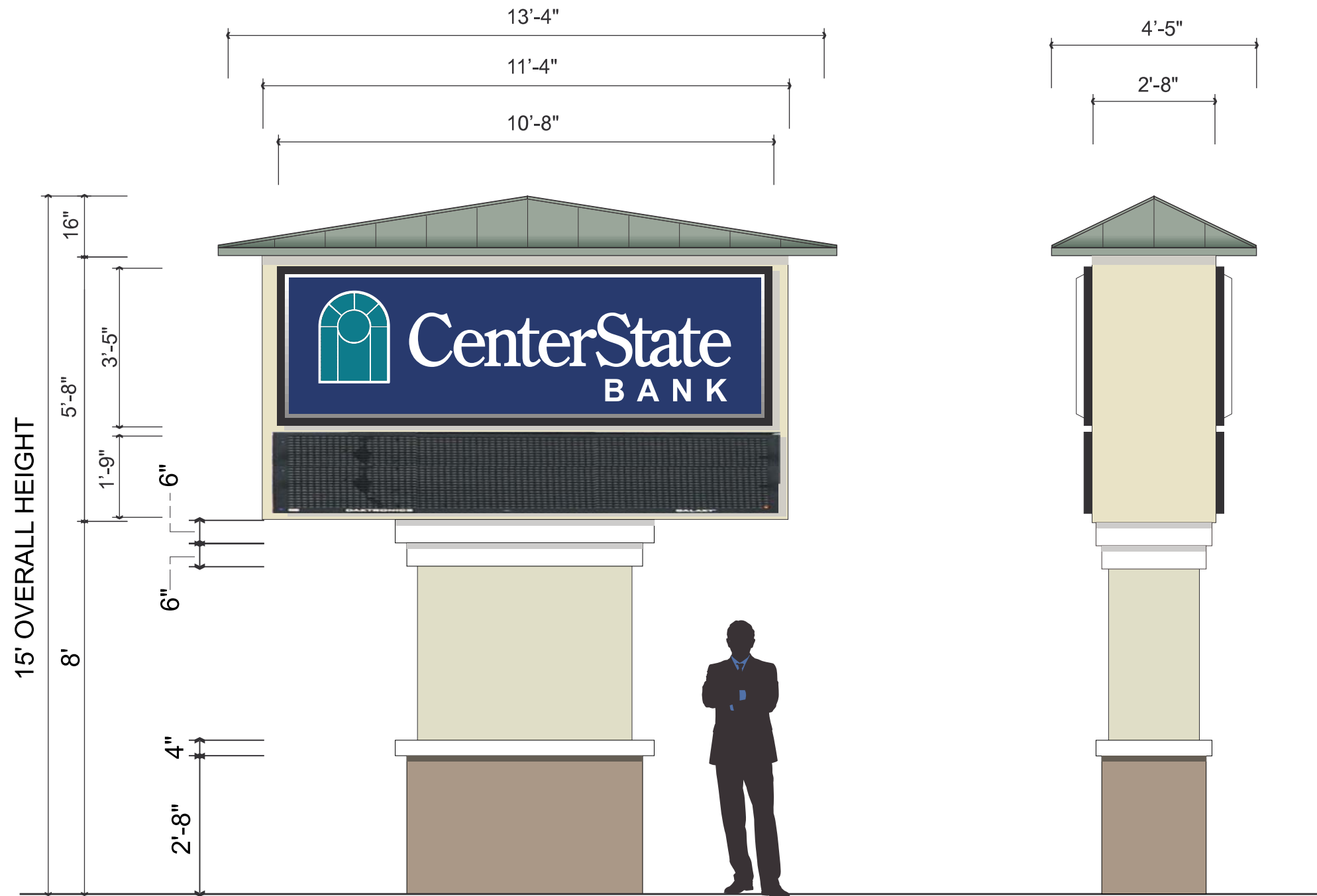







DOUBLE FACE ILLUMINATED PYLON

58.55 Sq Ft

MAXIMUM ACTIVE ADVERTISING AREA
 MAIN CABINET : 3'-5" X 11'-4" = 38.72 Sq Ft
 E.M.C. : 1'-9" X 11'-4" = 19.83 Sq Ft
 TOTAL : 58.55 Sq Ft



COLORS

-  Blue vinyl
3M #3630-36
(PMS #281)
-  White
-  Black
-  Gerber #230-246
Teal
-  To match building fascia



GENERAL SPECIFICATIONS:

Double Faced Illuminated Pylon

***Remove existing pylon.

New all aluminum / conventional construction cabinet. Pan formed pigmented white faces with vinyl graphics applied 1st surface. Internally illuminated by H.O. fluorescent lamps. (2) Single face 1'-9" X 9'-11" Galaxy 3500 monochromatic E.M.C.'s mounted back to back on steel support pole(s) with filler as required. Steel support pole(s), concrete footer(s), & concrete slab per engineer's specifications. Pole cover painted to match building.

***NOTE: No animation allowed on E.M.C.'s.



512 6th St. NW
Winter Haven, FL 33881

Ph: 863-294-4498

Fax: 863-297-3299

www.signeffex.com

FL CERTIFICATION #ES12000111

Created Exclusively for:



5001 Okeechobee Blvd.
Ft Pierce, FL 34947

Sales Representative:

Customer Approval: Date:

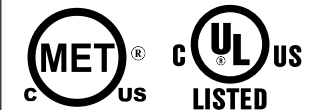
Landlord's Approval: Date:

Filename:

Scale: Sheet No.

Date: Rev. Date:

Designer:



This drawing is intended for the sole purpose of conveying visual design intent. It is an original drawing created by and is the sole property of (with exception to registered trademarks) SIGN EFFEX. It is not to be shown to any individual(s) outside of your company and it is not to be used or reproduced in any form. Violation of these terms may result in SIGN EFFEX implementing their right to charge for this original design and/or may result in court action.