

# City of Fort Pierce

## CITY COMMISSION WORKSHOP

[ June 8, 2015 ]



# Agenda

- Rail infrastructure overview
- Review of crossings
- Review of bridges
- Q&A

# [ Rail Infrastructure Overview ]

- Planned Improvements
  - Second track
  - Upgrade of existing track
  - Crossing improvements
  - Bridge improvements
- City of Fort Pierce
  - 6 route miles of track in Fort Pierce
  - 8 grade crossings

# [ Rail Infrastructure Overview ]

- Schedule
  - 90% design plans provided for comment to:
    - Fort Pierce
    - St. Lucie Village
    - FAU Harbor Branch
    - St. Lucie County
    - FDOT District 4
    - FDOT Central Office
  - Final plans expected June 2015
  - Construction anticipated start late Summer

# [ Sealed Corridor ]

- Guideline from Federal Railroad Administration
- Applies to grade crossings where train speeds are 79mph to 110mph
- Recommended features are:
  - Exit gates
  - Traffic separators
  - Grade separation
  - Roadway closure
  - Conversion to one-way street

# [ Sealed Corridor ]

- Fort Pierce
  - 3 Crossings to receive Sealed Corridor Treatment
    - City Causeway/SR A1A
    - Savannah Road
    - Midway Road
  - Proposed features are:
    - Traffic separators or medians
    - Pre-emption

# Sealed Corridor



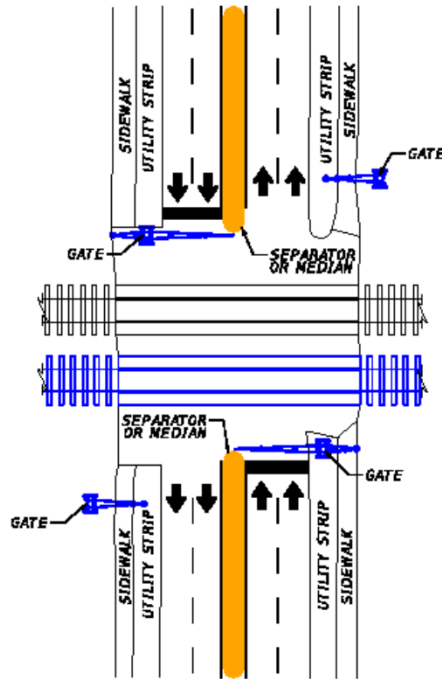
## SEALED CORRIDOR ALTERNATIVES GRADE CROSSING EXAMPLE



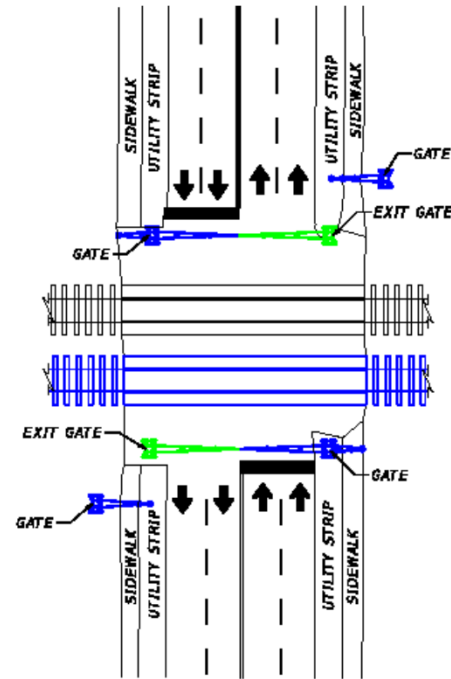
**LEGEND**

ALL ABOARD FLORIDA CONSTRUCTION	<b>SEALED CORRIDOR OPTIONS:</b>
NEW TRACK	TRAFFIC SEPARATOR/RAISED MEDIAN
ENTRANCE AND PEDESTRIAN GATES	EXIT GATES
DIRECTION OF VEHICLE TRAVEL	

**OPTION 1: ROADWAY CONSTRUCTION**



**OPTION 2: SIGNAL CONSTRUCTION**



# Quiet Zone

- Defined by the Train Horn Rule, 49 CFR Part 222
- Only public authorities can apply (not railroads)
- Train does not use horn under normal operations
- Similar features to Sealed Corridor
- AAF features may qualify Fort Pierce as QZ
  - City needs to run Quiet Zone Calculator (free online tool)
  - AAF can provide inputs and assistance

# [ Crossing Exhibits ]

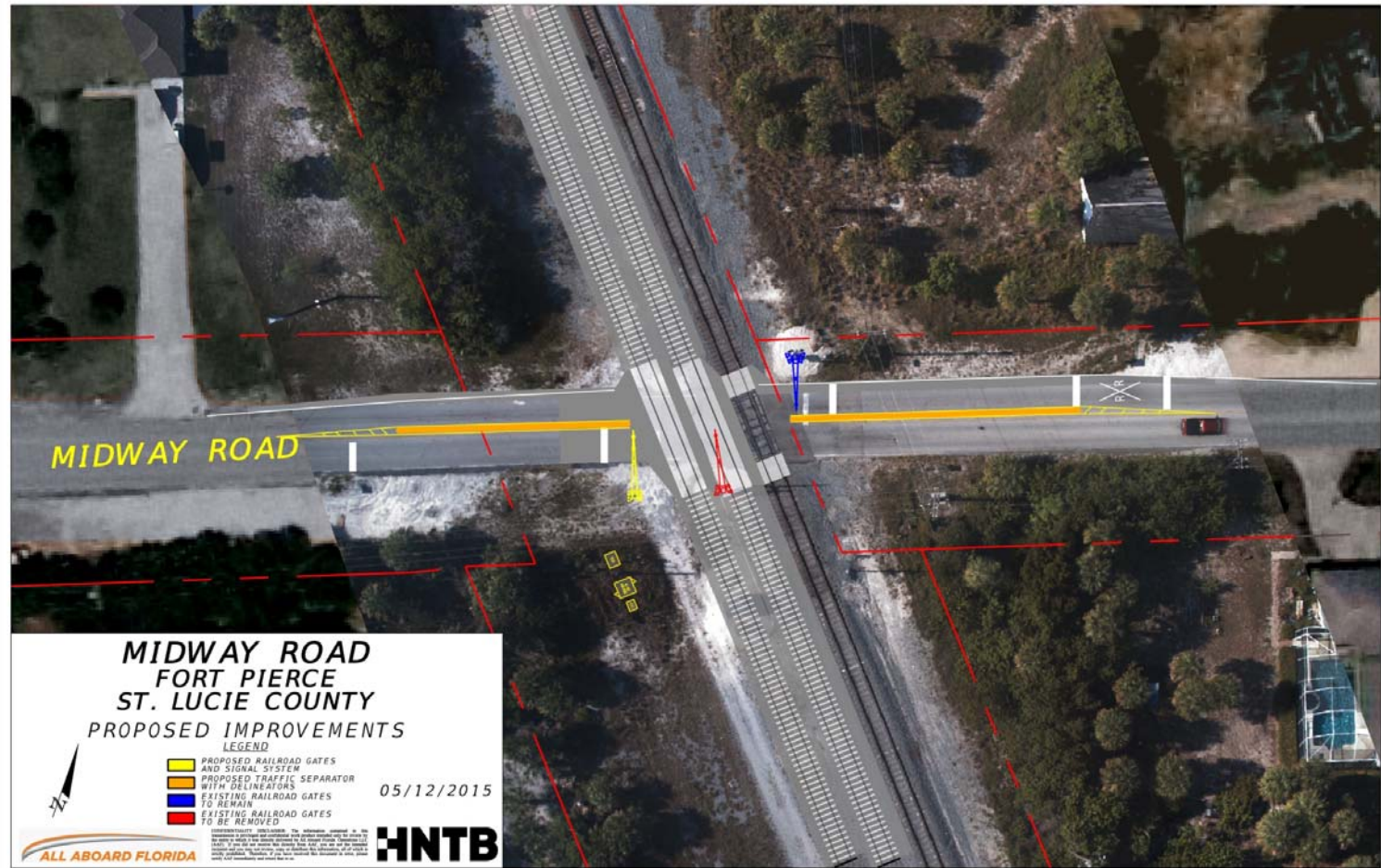
## Grade Crossings within Fort Pierce:

- Traffic Separators
  - Savannah Road
  - **Midway Road (EXHIBIT)**
- Existing Medians & Traffic Signal Pre-emption
  - City Causeway/SR A1A
  - **Seaway Drive (EXHIBIT)**
  - Avenue A
  - **Orange Avenue (EXHIBIT)**
- Entrance Gates
  - Fisherman's Wharf
  - Avenue D

# [ Crossing Exhibits ]

- Traffic Separators
  - Savannah Road
  - **Midway Road (EXHIBIT)**

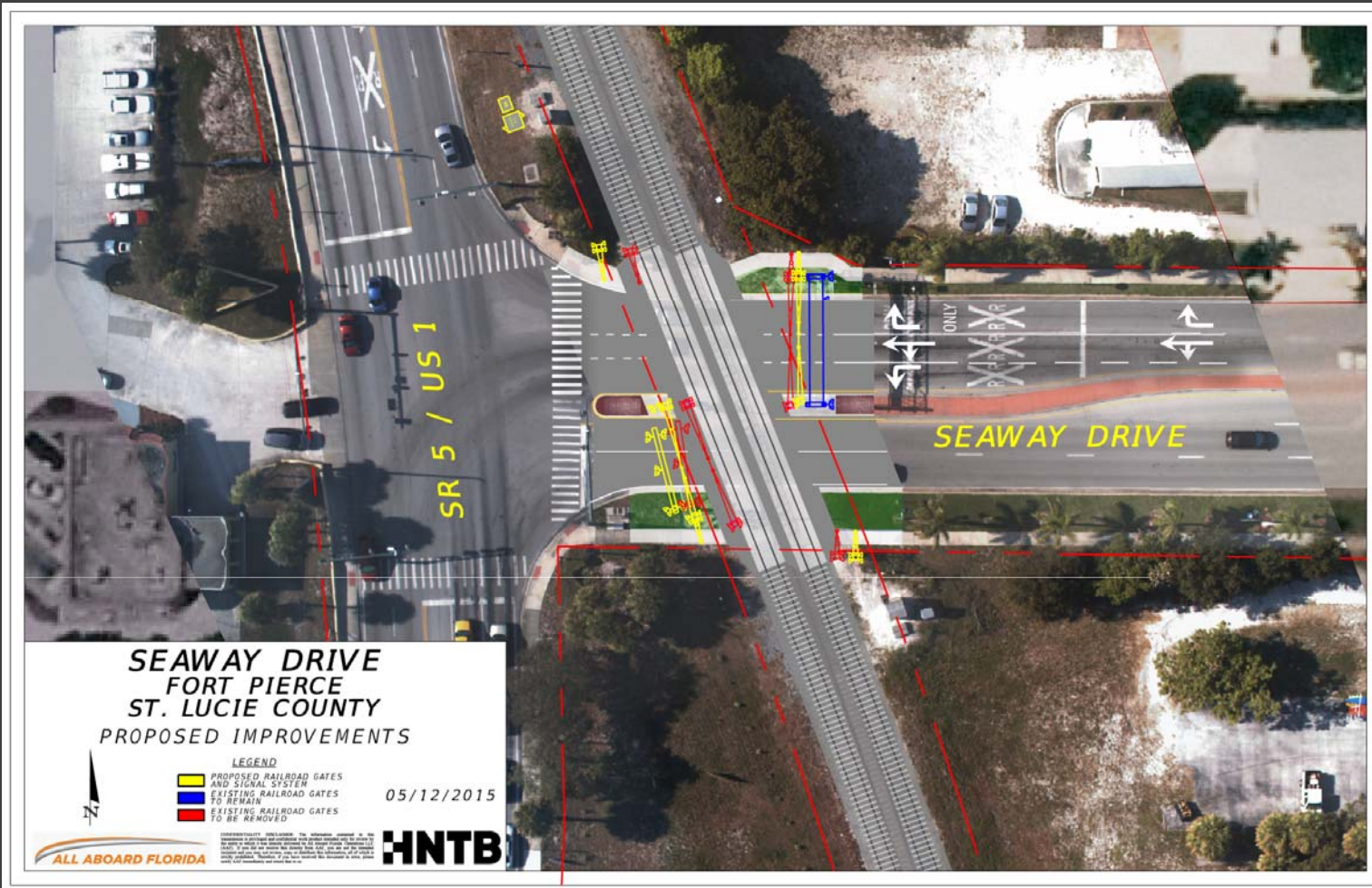
# Crossing Exhibits



# [ Crossing Exhibits ]

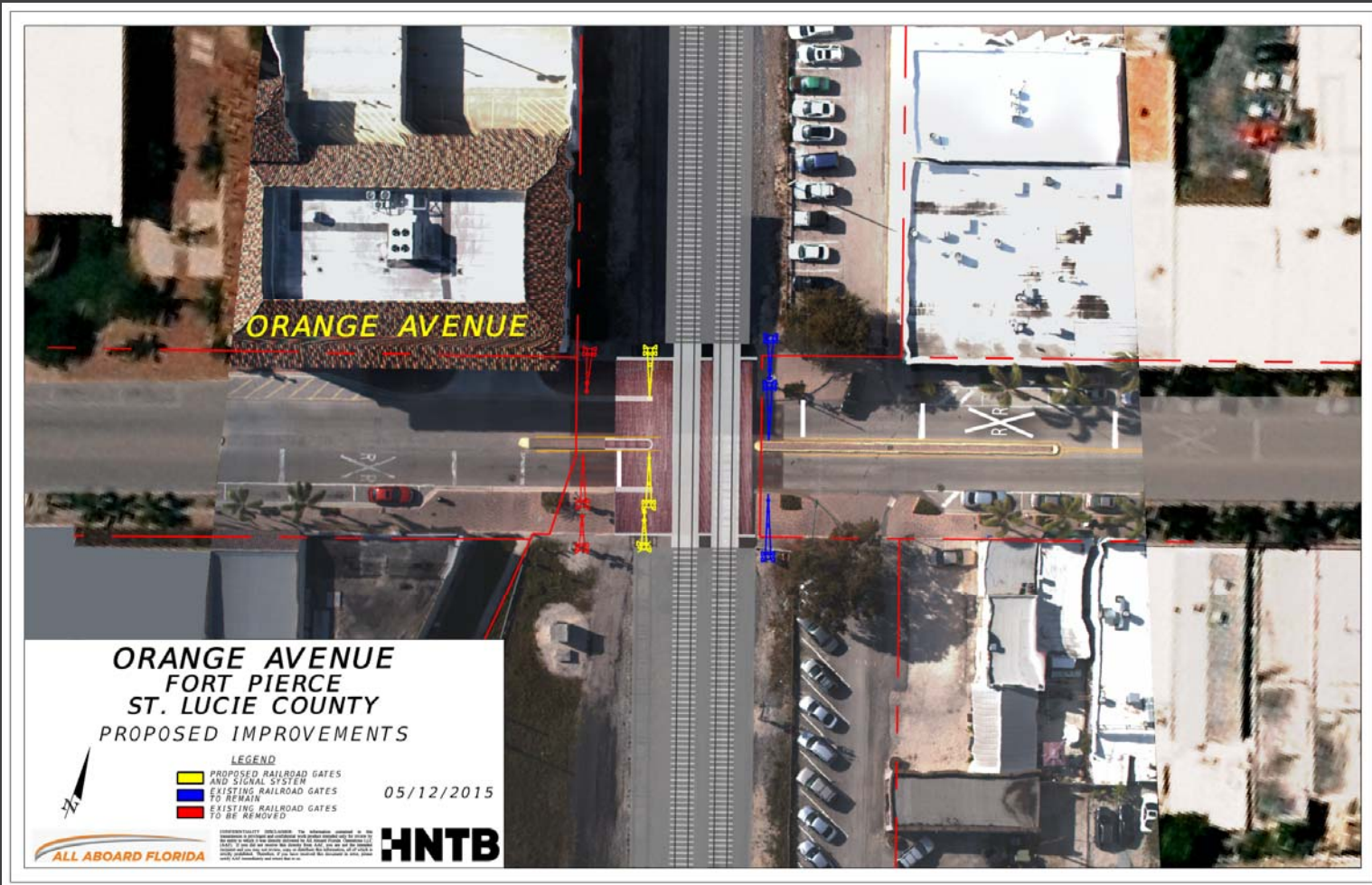
- Existing Medians & Traffic Signal Pre-emption
  - City Causeway/SR A1A
  - **Seaway Drive (EXHIBIT)**
  - Avenue A
  - **Orange Avenue (EXHIBIT)**

# Crossing Exhibits



ALL ABOARD FLORIDA

# Crossing Exhibits



# [ Grade Crossing Simulation ]

THIS IS A VIDEO



# [ Bridge Improvements ]

- Fort Pierce Bridges (3 total)
  - Taylor Creek
  - Avenue C
  - Moores Creek

# Bridge Improvements

## Taylor Creek

- Existing double track bridge
- Upgrade middle spans
- Maintain clearance over creek



# Bridge Improvements

## Avenue C

- Existing single track bridge to remain
- Build adjacent new bridge
- Clearances remain same



# [ Bridge Improvements ]

## Moore's Creek

- Existing single track bridge to remain
- Build adjacent new bridge

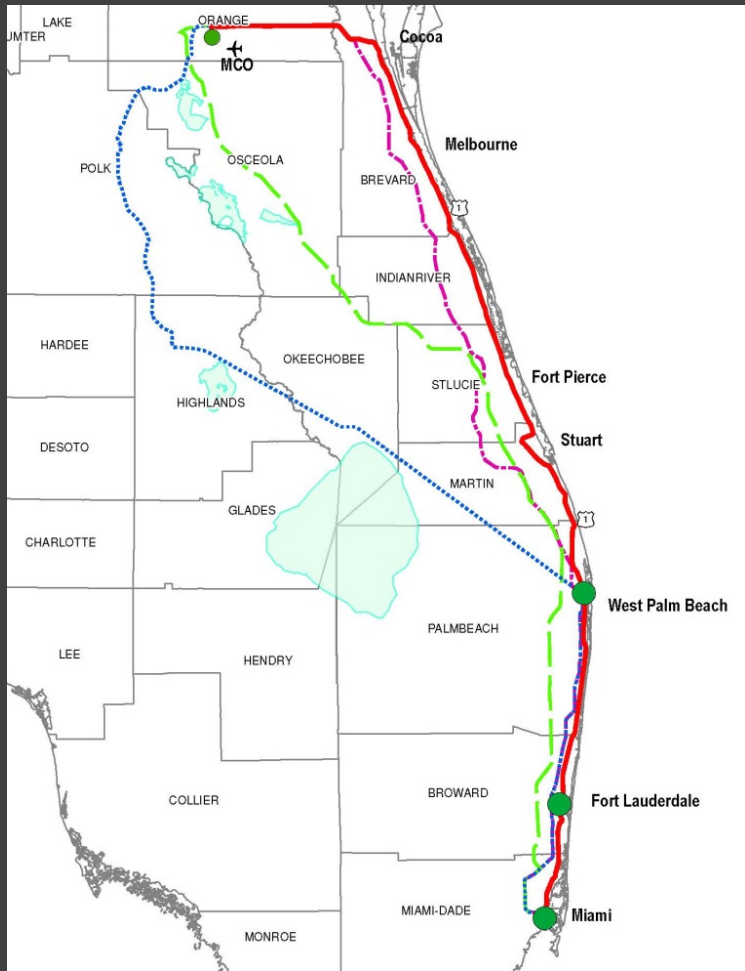


[ Q&A ]





# Alignments in EIS



**Explanation of Features**

- FEC Corridor
- - - CSX Corridor
- - - Turnpike Corridor
- - - I-95 Corridor
- County\_Boundaries\_jun11\_0911

Data Sources:  
ESRI 2012, FRA 2012, AMEG 2013

