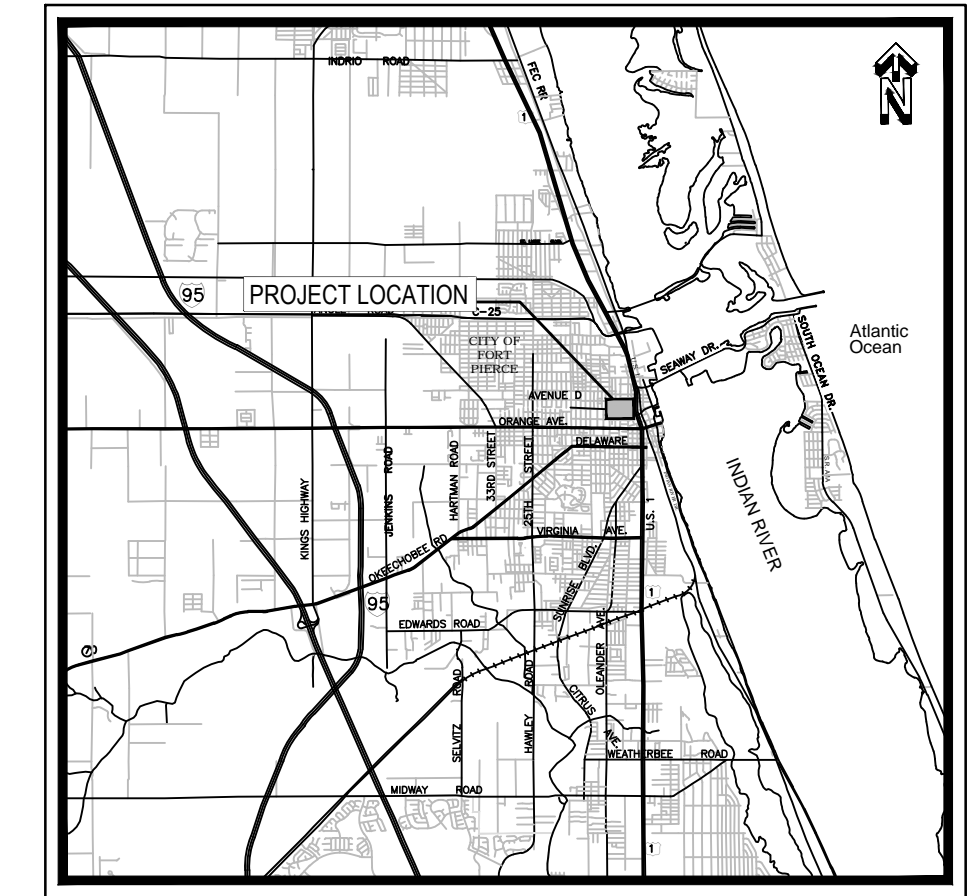


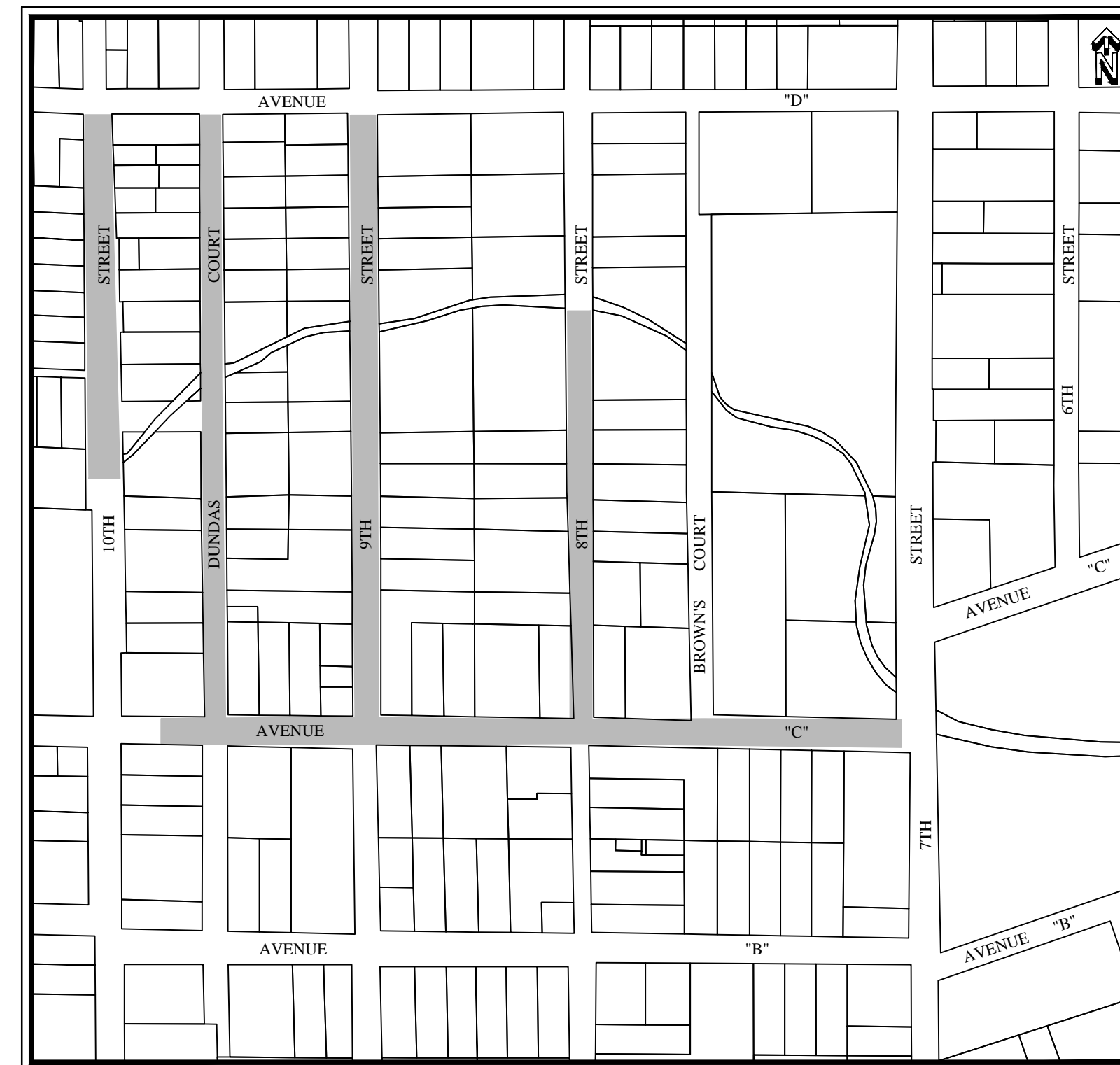
CITY OF FORT PIERCE • DEPARTMENT OF ENGINEERING

**LINCOLN PARK NEIGHBORHOOD
IMPROVEMENT PROGRAM**

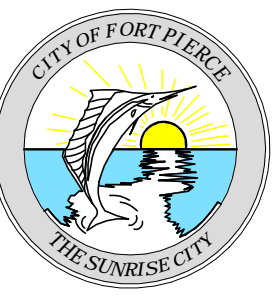


PROJECT LOCATION MAP

SITE LOCATION



INDEX	
DESCRIPTION	SHEET NUMBER
COVER SHEET	1 OF 9
TYPICAL ROADWAY SECTIONS	2 OF 9
8TH STREET ROADWAY IMPROVEMENT	3 OF 9
9TH STREET ROADWAY IMPROVEMENT	4 OF 9
10TH STREET ROADWAY IMPROVEMENT	5 OF 9
AVENUE "C" ROADWAY IMPROVEMENT	6 OF 9
DUNDAS COURT ROADWAY IMPROVEMENT	7 OF 9
DETAILS	8 OF 9
GENERAL SPECIFICATIONS	9 OF 9



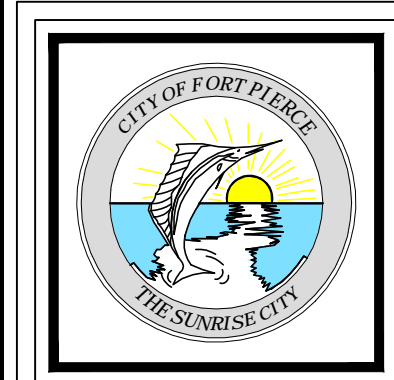
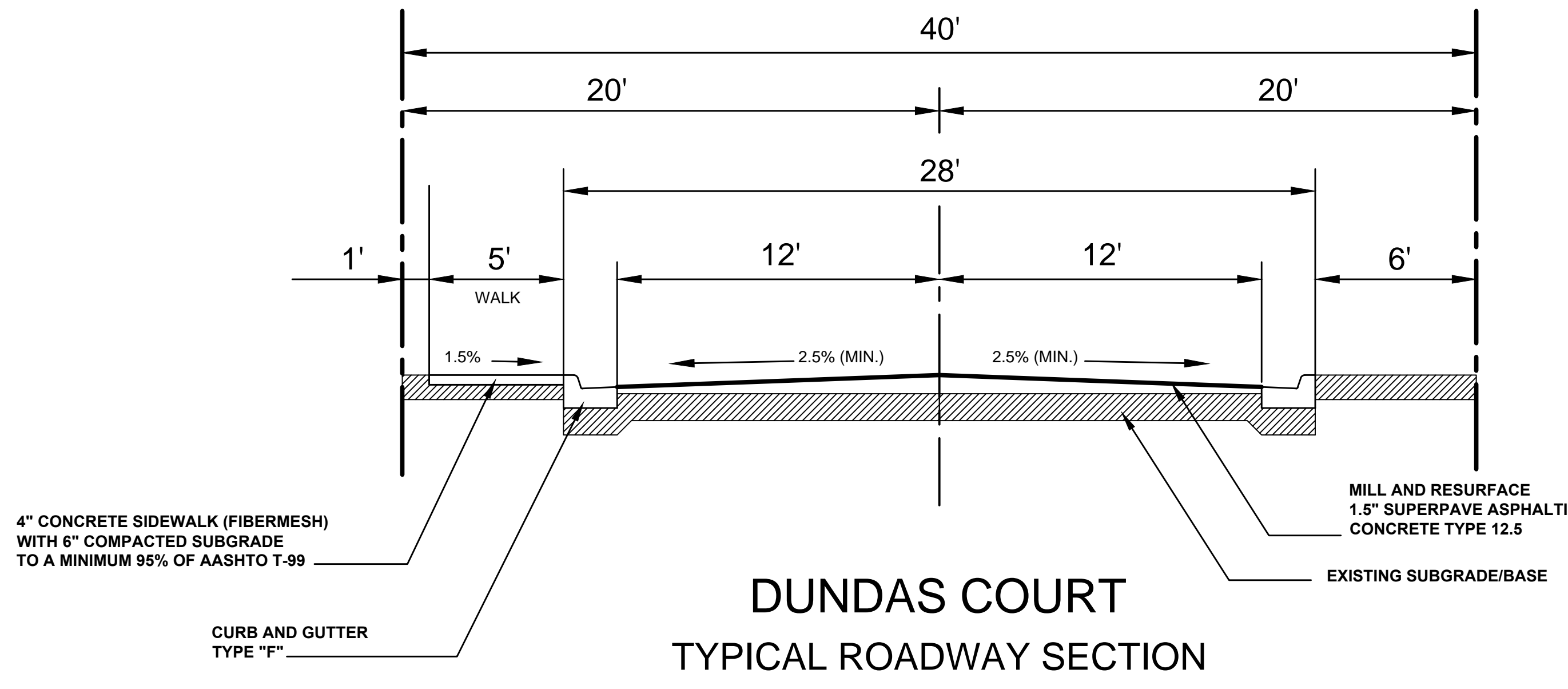
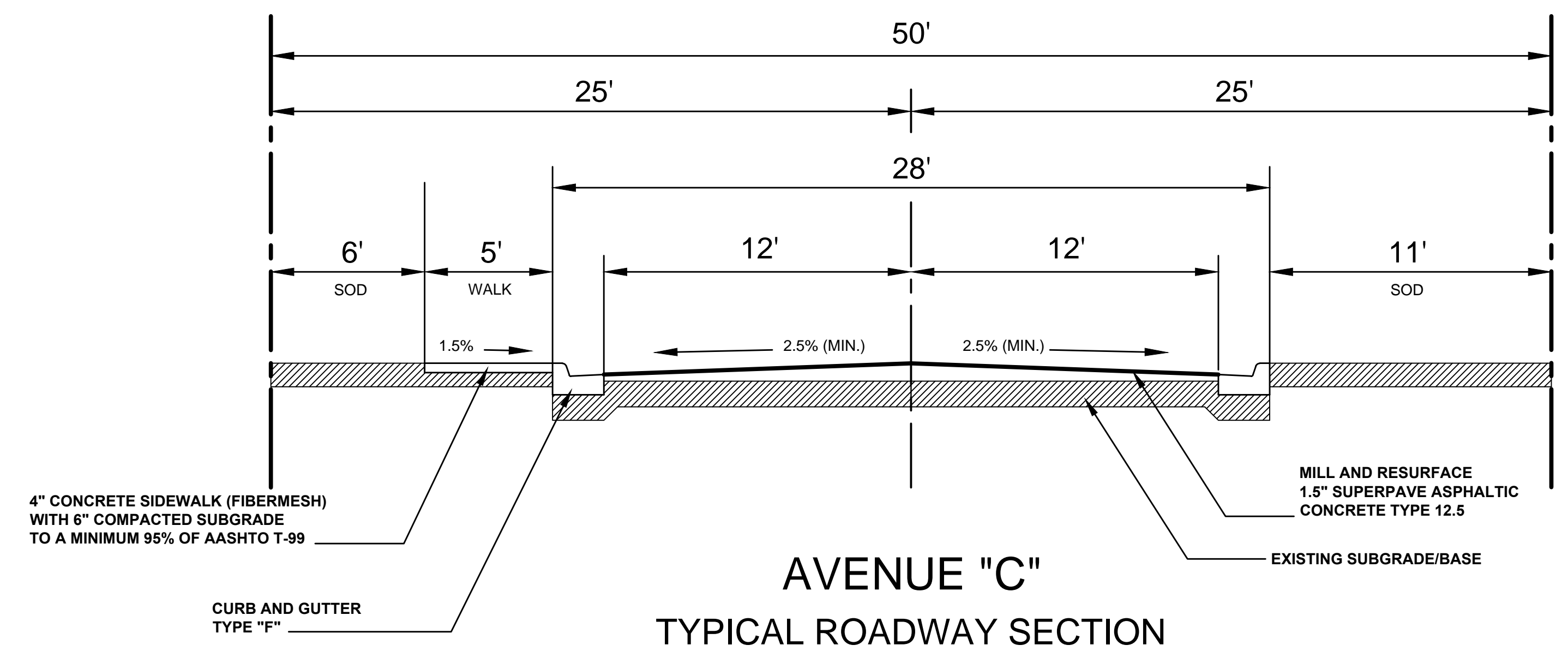
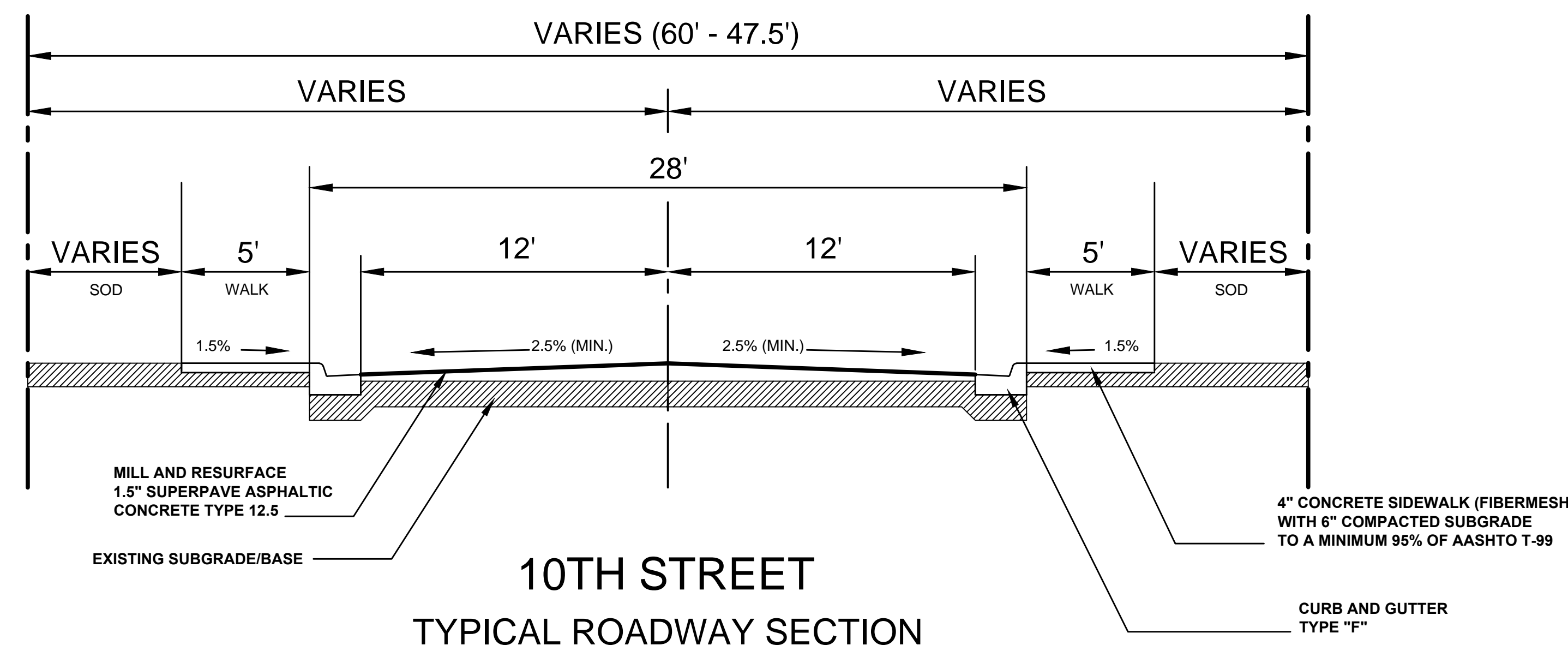
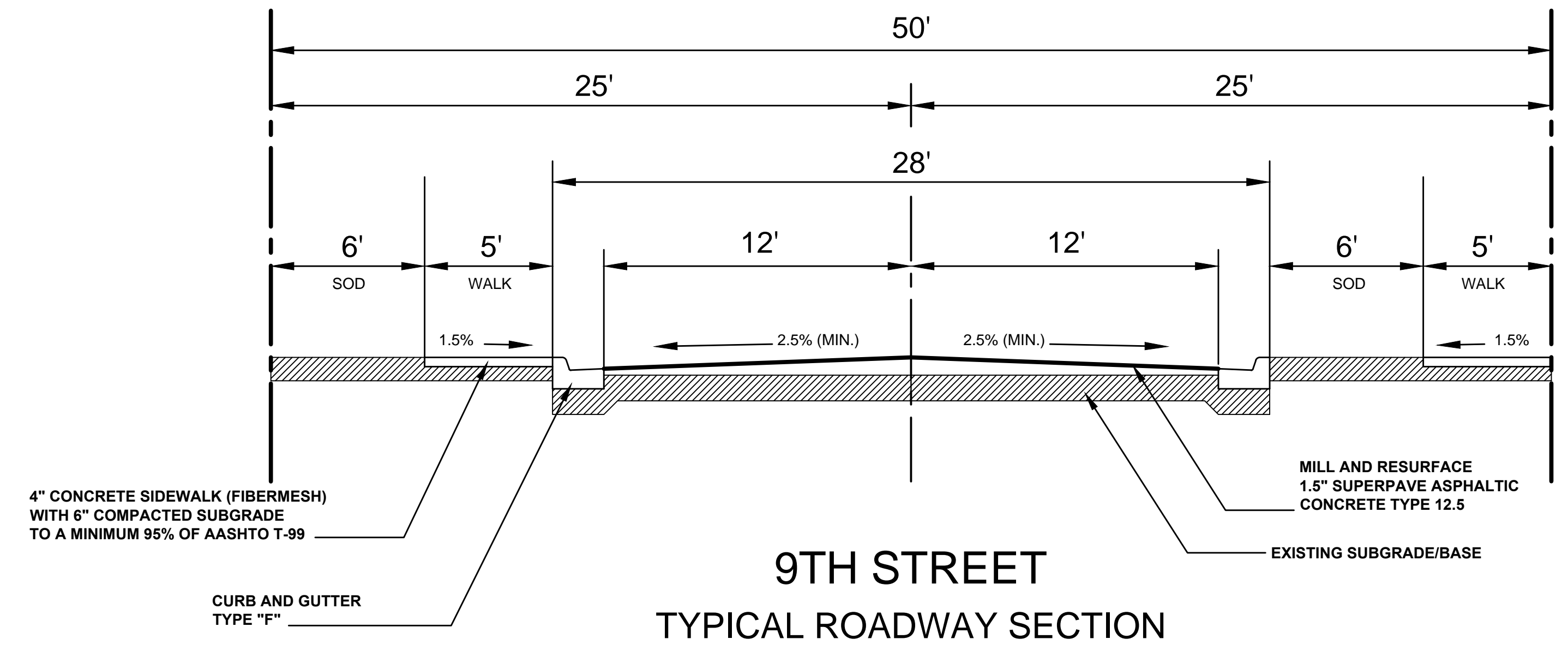
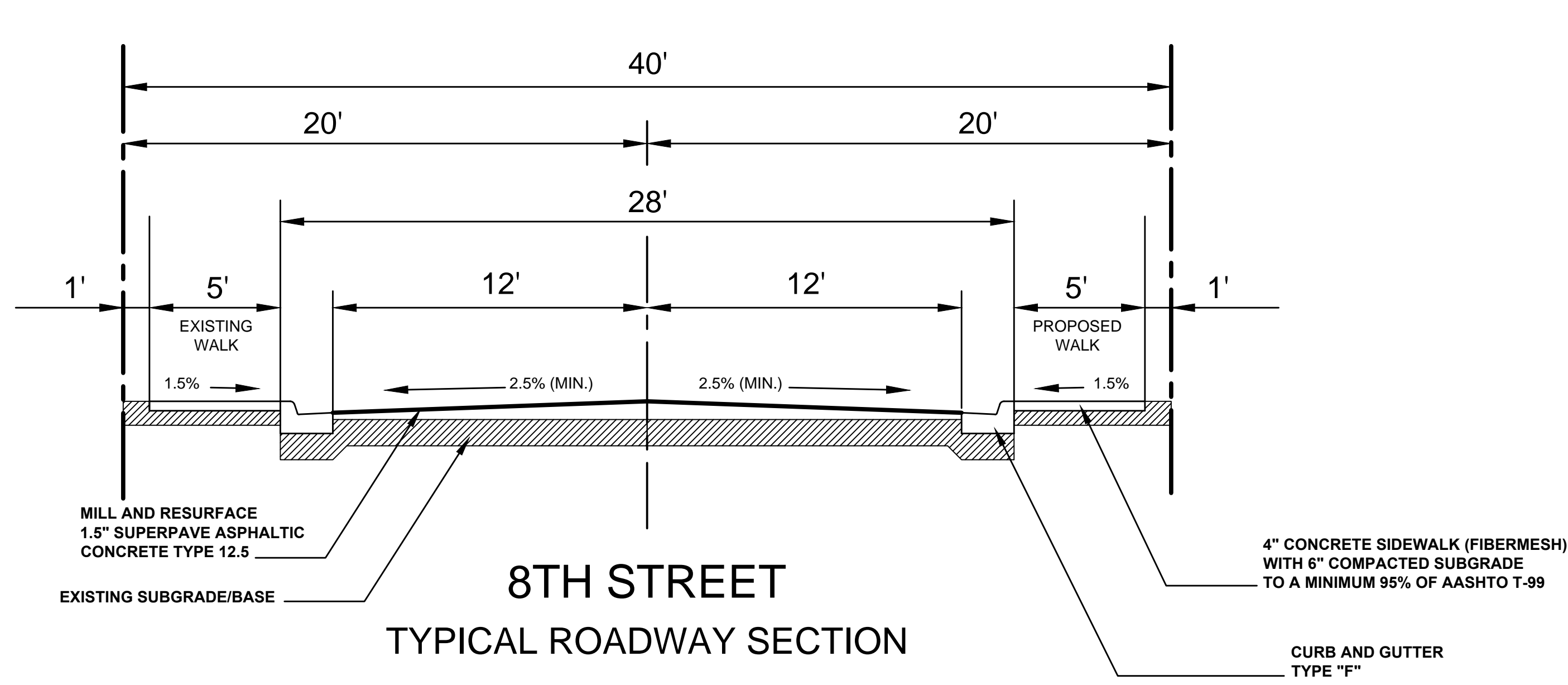
DATE:
10/15/14
SCALE:
N.T.S.
SURVEY CHECKED BY:
C. BLACKWELDER
DRAWN:
D. SUMNER
DESIGNED BY:
APPROVED:

No.	DATE	BY	REVISIONS

LINCOLN PARK NEIGHBORHOOD IMPROVEMENT PROGRAM

CITY OF FORT PIERCE
DEPARTMENT OF ENGINEERING
100 NORTH U.S. 1 P.O. BOX 1480
FORT PIERCE FLORIDA, 34954

PROJECT No.
DRAWING No.
SHEET No.
1 OF 9



DATE: 10/15/14
 SCALE: N.T.S.
 SURVEY CHECKED BY: C. BLACKWELDER
 DRAWN: D. SUMNER
 DESIGNED BY:
 APPROVED:

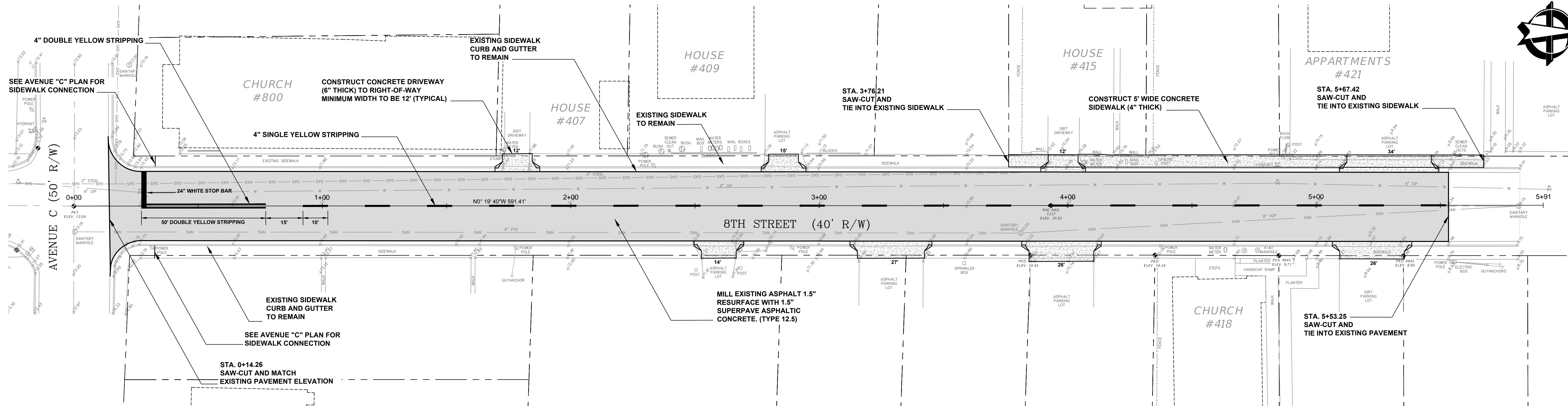
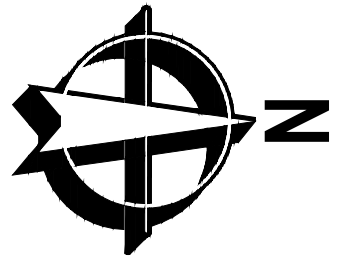
No.	DATE	BY	REVISIONS

TYPICAL ROADWAY SECTIONS
 LINCOLN PARK NEIGHBORHOOD IMPROVEMENT PROGRAM

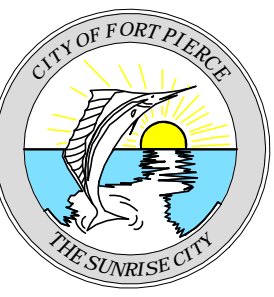
CITY OF FORT PIERCE
 DEPARTMENT OF ENGINEERING
 100 NORTH U.S. 1 P.O. BOX 1480
 FORT PIERCE FLORIDA, 34954

PROJECT No.
 DRAWING No.
 SHEET No. 2 of 9

Q:\Private\ALL\300 GB Drive\CGM\GEN\REMAPS\LPNP\8TH STREET\8TH STREET.dwg



NOTE: EXISTING UTILITY LOCATIONS WERE OBTAINED FROM FPUA DATA.
 CONTRACTOR IS RESPONSIBLE FOR DETERMINING EXACT LOCATION OF ALL
 UTILITIES PRIOR TO CONSTRUCTION COMMENCEMENT



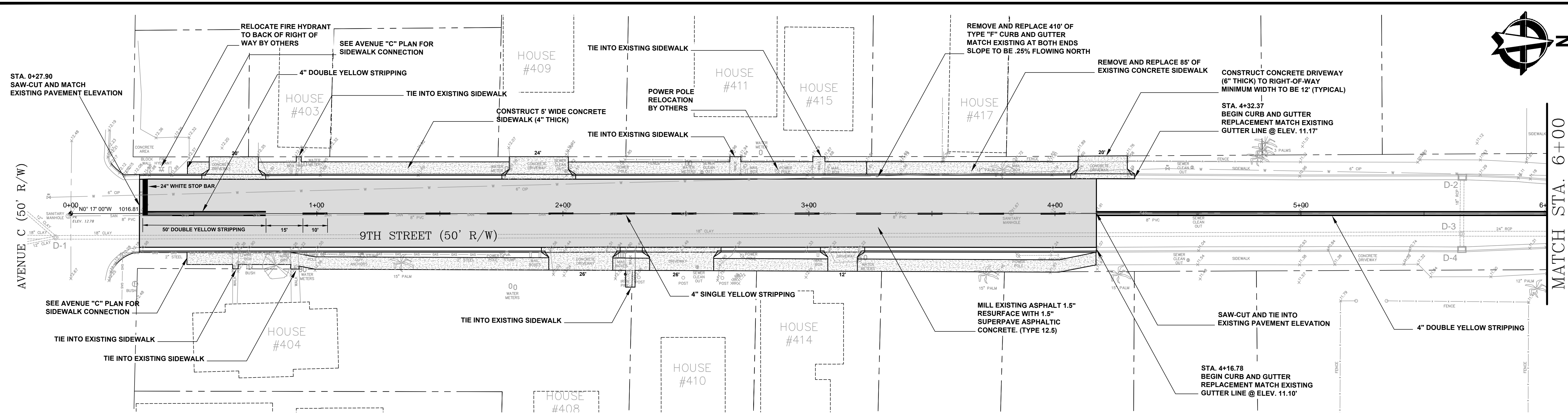
DATE:
10/15/14
 SCALE:
1" = 20'
 SURVEY CHECKED BY:
C. BLACKWELDER
 DRAWN:
D. SUMNER
 DESIGNED BY:
J. ANDREWS
 APPROVED:

No.	DATE	BY	REVISIONS

8TH STREET (AVE. C TO MOORE'S CREEK.)
 LINCOLN PARK NEIGHBORHOOD IMPROVEMENT PROGRAM

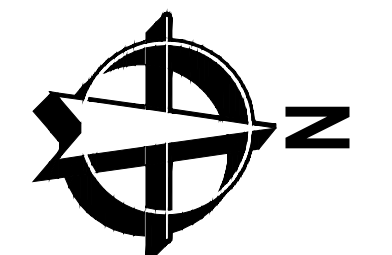
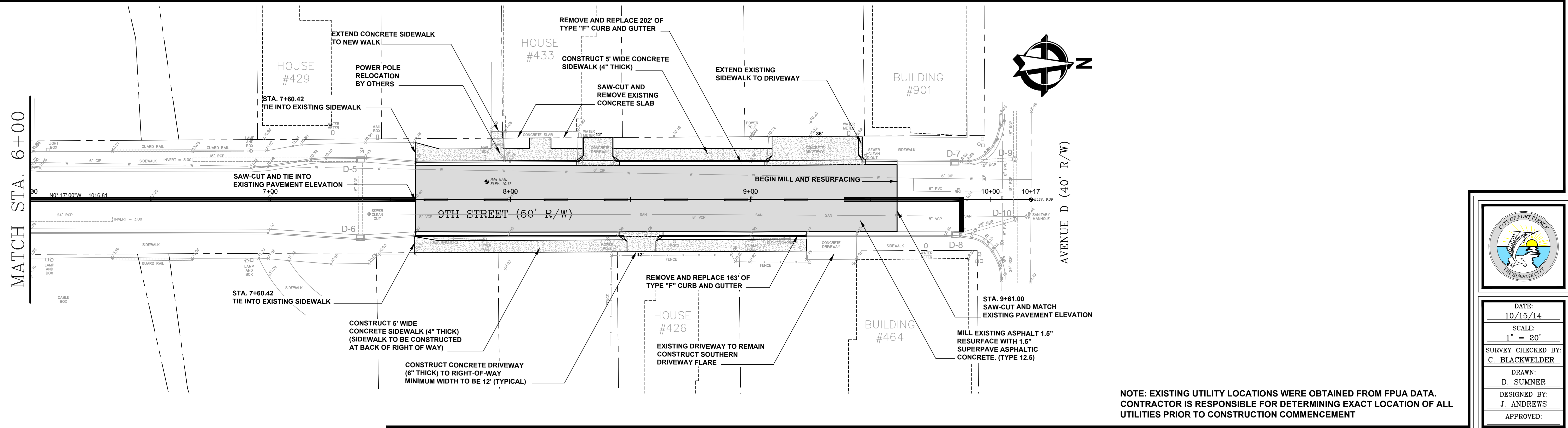
CITY OF FORT PIERCE
 DEPARTMENT OF ENGINEERING
 100 NORTH U.S. 1 P.O. BOX 1480
 FORT PIERCE FLORIDA, 34954

PROJECT No.
 DRAWING No.
 SHEET No.
3 of 9



DRAINAGE INFO

D-1	D-2	D-3	D-4	D-5	D-6	D-7	D-8	D-9	D-10
EXISTING STORM MANHOLE RIM EL. = 12.60 (N.) 18" CLAY = 6.70 (S.) 18" CLAY = 6.70 (SE) 12" CLAY = 8.35 (SW) 12" CLAY = 7.55	EXISTING CURB INLET GRATE EL. = 10.67 (E.) 18" RCP = 5.09	EXISTING STORM MANHOLE RIM EL. = 10.85 (N.) 24" RCP = 4.45 (S.) 18" RCP = 4.81 (E.) 18" RCP = 6.45 (W.) 18" RCP = 5.11	EXISTING CURB INLET GRATE EL. = 10.68 (W.) 18" RCP = 6.48	EXISTING CURB INLET GRATE EL. = 9.89 (S.) 18" RCP = 4.25 (E.) 18" RCP = 7.62	EXISTING CURB INLET GRATE EL. = 9.99 (W.) 18" RCP = 7.76	EXISTING CURB INLET GRATE EL. = 8.82 (N.) 15" RCP = 4.52	EXISTING CURB INLET GRATE EL. = 8.82 (N.) 15" RCP = 4.96	EXISTING STORM MANHOLE RIM EL. = 9.37 (S.) 15" RCP = 4.44 (E.) 18" RCP = 4.27 (W.) 15" RCP = 4.39	EXISTING STORM MANHOLE RIM EL. = 9.38 (S.) 15" RCP = 4.84 (E.) 24" RCP = 4.34 (W.) 18" RCP = 4.10



NOTE: EXISTING UTILITY LOCATIONS WERE OBTAINED FROM FPUA DATA. CONTRACTOR IS RESPONSIBLE FOR DETERMINING EXACT LOCATION OF ALL UTILITIES PRIOR TO CONSTRUCTION COMMENCEMENT

No.	DATE	BY	REVISIONS

**9TH STREET (AVENUE D TO AVENUE C)
LINCOLN PARK NEIGHBORHOOD IMPROVEMENT PROGRAM**

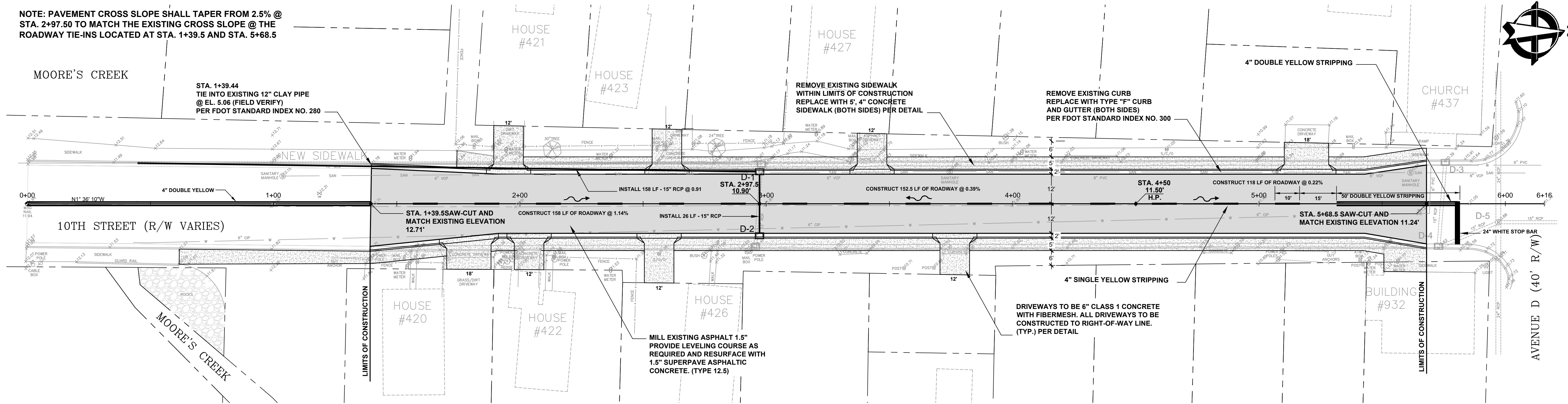
CITY OF FORT PIERCE
DEPARTMENT OF ENGINEERING
100 NORTH U.S. 1 P.O. BOX 1480
FORT PIERCE FLORIDA, 34954

CITY OF FORT PIERCE
THE SUNRISE CITY

DATE: 10/15/14
SCALE: 1" = 20'
SURVEY CHECKED BY: C. BLACKWELDER
DRAWN: D. SUMNER
DESIGNED BY: J. ANDREWS
APPROVED: _____

PROJECT No. _____
DRAWING No. _____
SHEET No. 4 OF 9

NOTE: PAVEMENT CROSS SLOPE SHALL TAPER FROM 2.5% @ STA. 2+97.50 TO MATCH THE EXISTING CROSS SLOPE @ THE ROADWAY TIE-INS LOCATED AT STA. 1+39.5 AND STA. 5+68.5



DRAINAGE INFO

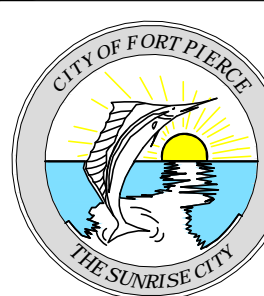
- D-1**
REMOVE EXISTING CURB INLET AND CONSTRUCT NEW TYPE "C" WITH P-9 TOP AT STA. 2+97.5, 13 LT.
GRATE EL. = 10.57
(S.) INV. EL. = 6.50
(E.) INV. EL. = 6.60
- D-2**
REMOVE EXISTING CURB INLET AND CONSTRUCT NEW TYPE "C" WITH P-9 TOP AT STA. 2+97.5, 13 RT.
GRATE EL. = 10.57
(W.) INV. EL. = 6.75
- D-3**
EXISTING TO REMAIN CURB INLET
GRATE EL. = 10.39
(E.) 15" RCP = 6.26
- D-4**
EXISTING TO REMAIN CURB INLET
GRATE EL. = 10.62
(N.) 15" RCP = 5.18
(W.) 15" RCP = 5.41
- D-5**
EXISTING TO REMAIN STORM MANHOLE
RIM EL. = 10.88
(N.) 15" RCP = 4.07
(S.) 15" RCP = 4.46
(E.) 24" RCP = 4.07
(W.) 24" RCP = 4.18

NOTE: EXISTING UTILITY LOCATIONS WERE OBTAINED FROM FPUA DATA. CONTRACTOR IS RESPONSIBLE FOR DETERMINING EXACT LOCATION OF ALL UTILITIES PRIOR TO CONSTRUCTION COMMENCEMENT

No.	DATE	BY	REVISIONS

10TH STREET (AVE. D TO MOORE'S CREEK.)
LINCOLN PARK NEIGHBORHOOD IMPROVEMENT PROGRAM

CITY OF FORT PIERCE
DEPARTMENT OF ENGINEERING
100 NORTH U.S. 1 P.O. BOX 1480
FORT PIERCE FLORIDA, 34954



DATE:
10/15/14

SCALE:
1" = 20'

SURVEY CHECKED BY:
C. BLACKWELDER

DRAWN:
D. SUMNER

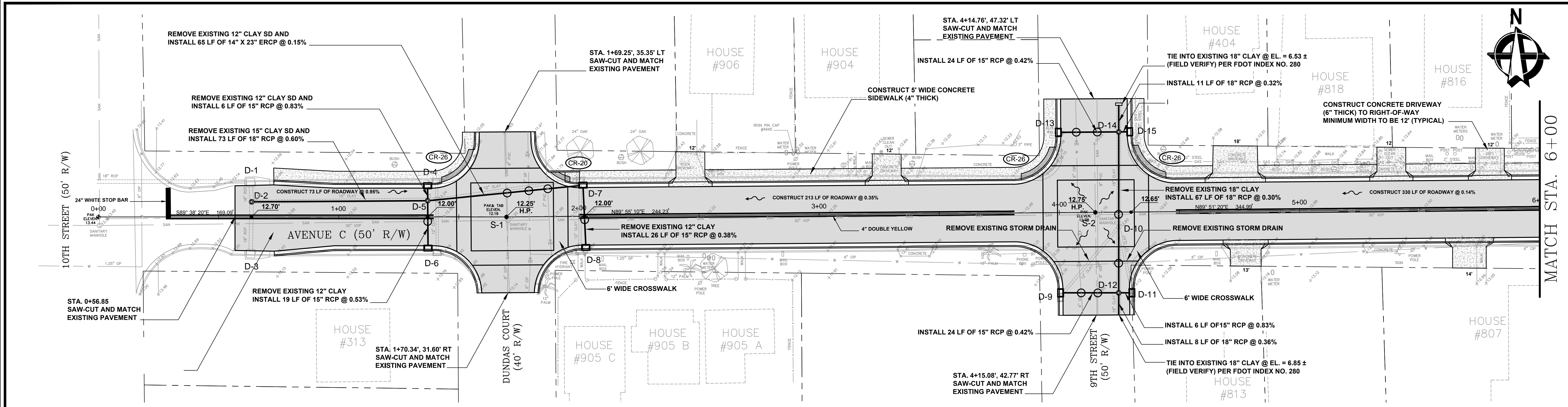
DESIGNED BY:
J. ANDREWS

APPROVED:

PROJECT No.

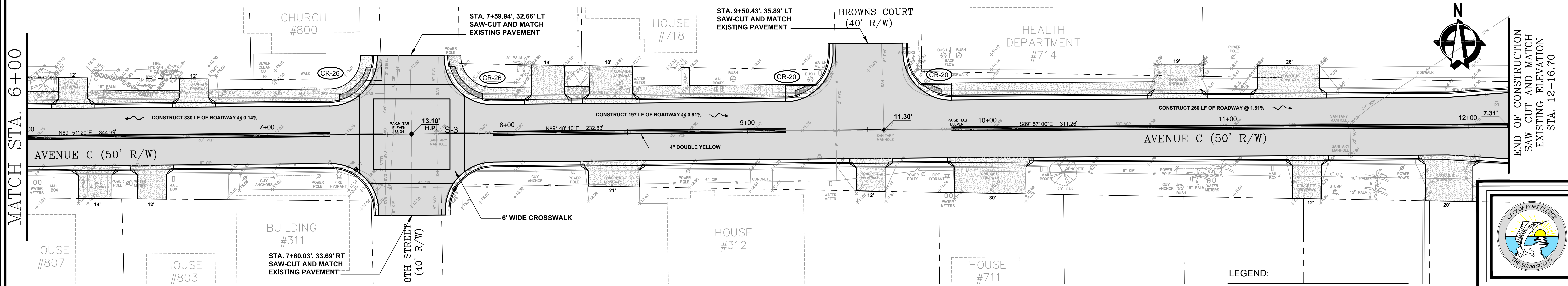
DRAWING No.

SHEET No.
5 of 9



DRAINAGE INFO

<p>D-1 EXISTING CURB INLET GRATE EL. = 12.05 (S.) 18" RCP = 7.84 (W.) 18" RCP = 7.18</p>	<p>D-2 STA. 0+63.77, 6.27' LT CORE DRILL EXISTING STORM MANHOLE RIM EL. = 12.58 (N.) 18" RCP = 8.25 (S.) 18" RCP = 8.18 (E.) 15" CLAY = 8.25 (TO BE REMOVED) (E.) 18" RCP = 8.25 (PROPOSED)</p>	<p>D-3 EXISTING CURB INLET GRATE EL. = 12.13 (N.) 18" RCP = 8.14</p>	<p>D-4 STA. 1+37.02, 13.00' LT REMOVE EXISTING INLET AND CONSTRUCT TYPE "C" INLET WITH P-9 TOP GRATE EL. = 11.65 (S.) 15" RCP = 8.75</p>	<p>D-5 STA. 1+37.05, 6.74' LT REMOVE EXISTING STORM MANHOLE AND INSTALL 5' Ø MANHOLE WITH RIM AND COVER RIM EL. = 11.80 (N.) 15" RCP = 8.70 (S.) 15" RCP = 8.70 (E.) 14" X 23" ERCP = 8.50 (W.) 18" RCP = 8.50</p>	<p>D-6 STA. 1+37.17, 12.79' RT REMOVE EXISTING CURB INLET AND CONSTRUCT TYPE "C" INLET WITH P-9 TOP GRATE EL. = 11.65 (N.) 15" RCP = 8.80</p>	<p>D-7 STA. 2+01.82, 12.82' LT REMOVE EXISTING CURB INLET AND CONSTRUCT TYPE "C" INLET WITH P-9 TOP GRATE EL. = 11.75 (S.) 15" RCP = 8.65 (W.) 14" X 23" ERCP = 8.60</p>	<p>D-8 STA. 2+02.74, 12.85' RT REMOVE EXISTING CURB INLET AND CONSTRUCT TYPE "C" INLET WITH P-9 TOP GRATE EL. = 11.75 (N.) 15" RCP = 8.75</p>	<p>D-9 STA. 4+00.35, 33.42' RT REMOVE EXISTING CURB INLET AND CONSTRUCT TYPE "C" INLET WITH P-9 TOP GRATE EL. = 12.00 (E.) 15" RCP = 8.70</p>	<p>D-10 EXISTING STORM MANHOLE RIM EL. = 12.60 (N.) 18" CLAY = 6.70 (S.) 18" CLAY = 6.70 (SE) 12" CLAY = 8.35 (SW) 12" CLAY = 7.55</p>	<p>D-11 STA. 4+29.85, 33.63' RT REMOVE EXISTING CURB INLET AND CONSTRUCT TYPE "C" INLET WITH P-9 TOP GRATE EL. = 12.00 (W.) 15" RCP = 8.65</p>
---	--	---	---	---	--	---	--	--	---	---



SANITARY INFO

<p>D-12 STA. 4+24.43, 33.57' RT CONSTRUCT 4' Ø MANHOLE WITH RIM AND COVER RIM EL. = 12.15 (N.) 18" RCP = 6.80 (S.) 18" RCP = 6.82 (E.) 15" RCP = 8.60 (W.) 15" RCP = 8.60</p>	<p>D-13 STA. 4+00.05, 33.43' LT INSTALL TYPE "C" INLET GRATE EL. = 12.00 (E.) 15" RCP = 8.00</p>	<p>D-14 STA. 4+25.03, 33.44' LT CONSTRUCT 4' Ø MANHOLE WITH RIM AND COVER RIM EL. = 12.15 (N.) 18" RCP = 6.57 (S.) 18" RCP = 6.60 (E.) 15" RCP = 7.95 (W.) 15" RCP = 7.90</p>	<p>D-15 STA. 4+29.48, 33.42' LT INSTALL TYPE "C" INLET GRATE EL. = 12.00 (W.) 15" RCP = 8.00</p>	<p>S-1 SANITARY MANHOLE RIM EL. = 12.25 (N.) 8" PVC = (S.) 8" VCP = (E.) 30" VCP = 6.22 (W.) 30" VCP = 6.22</p>	<p>S-2 SANITARY MANHOLE RIM EL. = 12.75 (N.) 8" PVC = (S.) 8" VCP = (E.) 30" VCP = 5.84 (W.) 30" VCP = 5.84</p>	<p>S-3 SANITARY MANHOLE RIM EL. = 13.16 (N.) 8" PVC = (S.) 8" VCP = 5.29 (E.) 30" VCP = 5.29 (W.) 30" VCP = 5.29</p>
--	---	--	---	--	--	---

LEGEND:

- SD — STORM DRAIN
- SAN — SANITARY SEWER
- CIP — CAST IRON PIPE
- X10.00 — EXISTING ELEVATION
- ⊕ — UTILITY CROSSING
- H.P. — HIGH POINT
- 10.90' — PROPOSED FINISHED GRADE ELEVATION

NOTE: EXISTING UTILITY LOCATIONS WERE OBTAINED FROM FPUA DATA. CONTRACTOR IS RESPONSIBLE FOR DETERMINING EXACT LOCATION OF ALL UTILITIES PRIOR TO CONSTRUCTION COMMENCEMENT

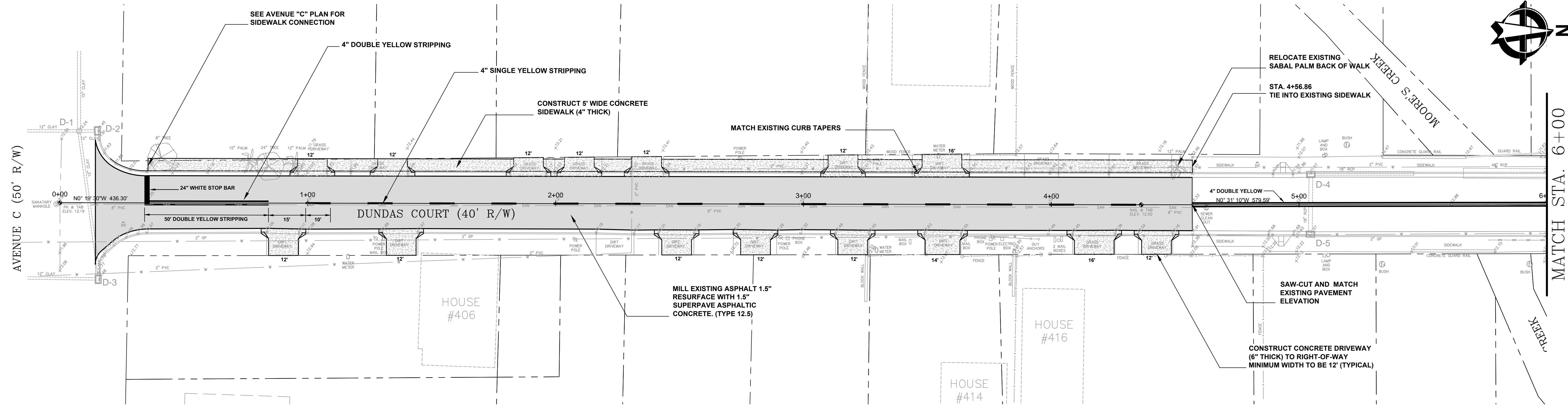
No.	DATE	BY	REVISIONS

**AVENUE C (10TH STREET TO 7TH STREET)
LINCOLN PARK NEIGHBORHOOD IMPROVEMENT PROGRAM**

CITY OF FORT PIERCE
DEPARTMENT OF ENGINEERING
100 NORTH U.S. 1 P.O. BOX 1480
FORT PIERCE FLORIDA, 34954

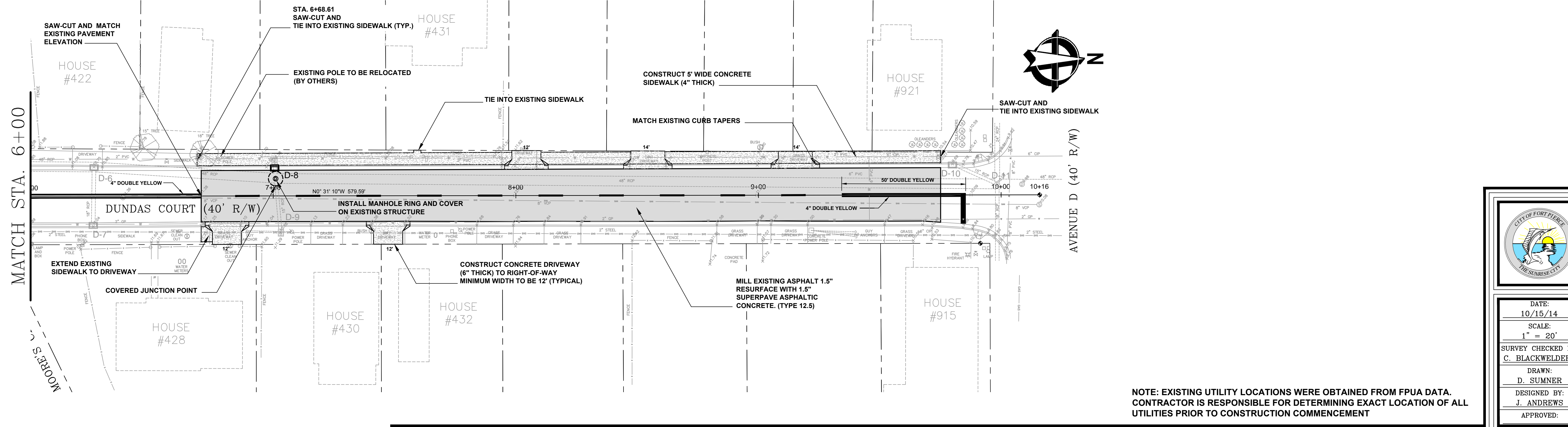
PROJECT No.
DRAWING No.
SHEET No. 6 OF 9

Q:\Private\ALL\300 GB Drive\GEN\REMAPS\LP\MP\AVENUE C\Avenue C.dwg



DRAINAGE INFO

D-1	D-2	D-3	D-4	D-5	D-6	D-7	D-8	D-9	D-10	D-11
EXISTING CURB INLET GRATE EL. = 11.45 (S.) 12" CLAY = 9.30	EXISTING STORM MANHOLE RIM EL. = 12.24 (N.) 12" CLAY = 9.24 (S.) 12" CLAY = 9.19 (E.) 12" CLAY = 8.74 (W.) 15" CLAY = 8.69	EXISTING CURB INLET GRATE EL. = 11.48 (S.) 12" CLAY = 9.23 (W.) 12" CLAY = 8.73	EXISTING CURB INLET GRATE EL. = 11.57 (N.) 18" RCP = 4.30 (E.) 18" RCP = 7.25	EXISTING CURB INLET GRATE EL. = 11.57 (W.) 18" RCP = 7.29	EXISTING V CURB INLET GRATE EL. = 10.57 (N.) 48" RCP = 1.87 (S.) 48" RCP = 1.60 (E.) 18" RCP = 8.07	EXISTING CATCH BASIN GRATE EL. = 10.38 (E.) 15" RCP = 4.28	CATCH BASIN TO BE REMOVED INSTALL NEW STORM MANHOLE AND TYPE "9" HOOD AND GRATE EL. = 10.30'	EXISTING CATCH BASIN GRATE EL. = 10.88 (W.) 15" RCP = 5.18	EXISTING CURB INLET GRATE EL. = 9.69 (NE) 18" RCP = 5.51	EXISTING STORM MANHOLE RIM EL. = 10.09 (N.) 48" RCP = 3.12 (S.) 48" RCP = 2.93 (E.) 18" RCP = 4.69 (W.) 24" RCP = 3.20 (SW) 15" RCP = 5.43



NOTE: EXISTING UTILITY LOCATIONS WERE OBTAINED FROM FPUA DATA. CONTRACTOR IS RESPONSIBLE FOR DETERMINING EXACT LOCATION OF ALL UTILITIES PRIOR TO CONSTRUCTION COMMENCEMENT

No.	DATE	BY	REVISIONS

DUNDAS CT (AVENUE D TO AVENUE C)
LINCOLN PARK NEIGHBORHOOD IMPROVEMENT PROGRAM

CITY OF FORT PIERCE
DEPARTMENT OF ENGINEERING
100 NORTH U.S. 1 P.O. BOX 1480
FORT PIERCE FLORIDA, 34954

PROJECT No.
DRAWING No.
SHEET No. 7 OF 9

GENERAL NOTES

1. Bidders, before submitting Bid, must examine the Contract Documents thoroughly, including plans, specifications and quantities and must familiarize himself/herself with the site, existing project conditions, and all federal, state and local laws, ordinances, rules, regulations and policies that may affect cost, progress or performance of the Project work required by the Contract Documents and study and carefully correlate Bidder's observations with the Contract Documents, including the contract quantities, and make written requests for interpretation to the City Engineer promptly after discovering any conflicts, errors, ambiguities or inconsistencies.

2. Bidder or Contractor must familiarize himself (herself) with the Instructions to Bidders and General Conditions that are a part of the Contract Documents prior to the submittal of the Unit Price Bid.

3. Bidder is required, before submitting bid and prior to starting of the work, familiarize himself with utilities, easements, etc. that may affect the contract work. Though considerable effort has been made by the FPUA and the City to accurately locate existing drainage and utility lines and any appurtenances prior to design, locations, elevations, dimensions and conditions are approximate and must be confirmed prior to construction.

4. It is the responsibility of the Bidder or Contractor to verify elevations, locations and conditions prior to Bid submittal or starting of the work. Any damage to utilities, structures or services shall be repaired or replaced at the contractors expense in a manner that will be approved by the City Engineer.

5. All elevations shown on the Contract Documents are referenced to National Geodetic Vertical Datum (NGVD).

6. It is the responsibility of the Contractor to notify all utility companies two working days prior to excavation, as required by Chapter 77-153 F.S.. Contractor is responsible for the coordination of utility relocation, temporary services, or any disruption of said services.

7. Personal property including but not limited to, signs, plants, planters, driveways, shrubs, mailboxes, fences, utility line markers, poles, irrigation equipment, etc. within the limits of construction, shall be removed, replaced or relocated at the Contractor's expense, as required by the construction. Each item shall be replaced to its original condition, or better, and its original location by the Contractor. Different locations for replacements must be authorized by the City Engineer. The Contractor shall notify property owners at least seventy-two (72) hours in advance of any removal or relocation /replacement of all personal property within the limits of construction. All Trees 6" in diameter or larger are to remain unless the removal is noted on the plans or approved by the City Engineer.

8. Asphalt shall be sawcut, removed and replaced in accordance with the open cut details shown on plans. Asphalt edges shall be smooth and on a straight line.

9. Contractor must submit a "Maintenance of Traffic Plan (MOT)" in accordance with the USDOT/FHA "Manual on Uniform Traffic Control Devices" and the FDOT "Roadway and Traffic Design Standards" at the Pre-Construction Conference for the City Engineer's review and approval, prior to the start of construction. Contractor shall be responsible for the maintenance of traffic, in accordance with approved MOT, and shall maintain proper access to adjacent properties at all times during the time of the Contract.

10. All excess material, including, but not limited to, pipe, earthwork material, structures, etc., shall be the property of the City of Ft. Pierce. The City Engineer or his designee shall determine what or how much of the excess material shall be disposed of by Contractor. Cost of disposal of all excess material shall be included in the Bid.

11. Contractor shall remove and replace all pipes, culverts, structures and appurtenances damaged during construction at no expense to the City of Ft. Pierce.

12. The limits of construction shown on the approved drawings are the maximum limit for which items will be paid by the City. Any removals or replacements beyond the construction limits without the authorization of the City Engineer, shall not be paid to Contractor.

13. Two sets of As-built drawings, and one copy of a digital format disc prepared by a PLS must be submitted with the final payment request.

14. Whenever Contractor needs to remove existing storm sewers to facilitate the placement of new facilities indicated in drawings, he (she) shall replace pipes with material of reinforced concrete pipe. Replacement of storm sewers that have been disturbed must be determined jointly by the Contractor and the City Engineer. Replacement of pipe joints may be accomplished by the use of concrete collar, per FDOT Specifications.

15. In the event structures, such as inlets, catch basins, manholes, outfalls, etc. are in proximity to the storm sewer which has been removed or damaged, at least one full joint of pipe must be undisturbed prior to entering such structures. If a full undisturbed joint does not remain, Contractor shall replace the storm sewer completely to the structure at no additional cost to the City. In addition, if in replacing the storm sewer to the structure, Contractor causes the existing structures to be disturbed, cracked or otherwise deemed deficient by the City Engineer, Contractor shall be required to replace said structures at no additional cost to the City.

16. The "Trench Safety Act" shall be incorporated into this contract as enacted by the Legislature of the State of Florida to be in effect as of October 1, 1990.

17. All inlets and pipe shall be protected during construction to prevent siltation in the drainage systems by way of temporary plugs and plywood or plastic covers over the inlets. The entire drainage systems shall be cleaned of all debris prior to final acceptance. All concrete shall be a minimum 3,000 PSI.

18. All proposed elevations refer to finished grades.

19. The contractor must obtain a water use permit prior to construction dewatering unless the work qualifies for a general permit pursuant to subsection 40E-20.302(4), F.A.C.

20. All construction must comply with the City of FT. Pierce Code of Ordinances and the FDOT Roadway and Traffic Design Standards, latest edition.

21. All disturbed areas shall be sodded upon completion of grading after as-built grade elevations are approved by the Engineer.

22. Backfill to be compacted in no greater than one (1) foot lifts to the density of the undisturbed adjacent soils.

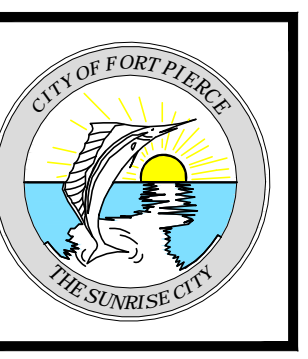
23. A stable permanent and accessible elevation reference shall be established on or within one hundred feet (100') of all permitted discharge structures no later than the submission of the certification to the water management district. The location of the elevation reference must be note on or within the certification report.

24. Pipe culverts and storm sewers shall be constructed and installed in accordance with section 430 F.D.O.T. Standard Specifications for Road and Bridge Construction, latest edition.

25. Erosion control measures shall be taken by contractor during construction as per FDOT Standard Index No. 102:
 A. Silt Fence shall be installed along the entire perimeter of the project adjacent to any soil disturbing activities.
 B. All drainage structures are to be protected during construction as per FDOT Index Standard No. 102.
 C. All fencing, grading, signing, and sodding shall be maintained during the contract life. All damaged work shall be restored at no cost to the City.

GEODETIC INFORMATION CENTER
 ATTN: C-185
 ROCKVILLE, MD 30852
 PHONE: (301)443-8631

48 HOURS BEFORE DIGGING
 BROWARD • PALM BEACH • INDIAN RIVER
 ST. LUCIE • MARTIN COUNTIES
 CALL TOLL FREE
1-800-432-4770
 NO CUTS UNDERGROUND UTILITIES
 NOTIFICATION CENTER



DATE:
10/15/14
 SCALE:
N.T.S.
 SURVEY CHECKED BY:
C. BLACKWELDER
 DRAWN:
D. SUMNER
 DESIGNED BY:
 APPROVED:

No.	DATE	BY	REVISIONS

GENERAL SPECIFICATIONS
LINCOLN PARK NEIGHBORHOOD IMPROVEMENT PROGRAM

CITY OF FORT PIERCE
 DEPARTMENT OF ENGINEERING
 100 NORTH U.S. 1 P.O. BOX 1480
 FORT PIERCE FLORIDA, 34954

PROJECT No.
 DRAWING No.
 SHEET No.
 9 of 9