

# BOUNDARY AND TOPOGRAPHIC SURVEY

## TREE SURVEY

### LEGAL DESCRIPTION

FROM THE NORTHWEST CORNER OF THE SOUTHEAST QUARTER OF THE SOUTHEAST QUARTER OF SECTION 8, TOWNSHIP 35 SOUTH, RANGE 40 EAST IN THE CITY OF FORT PIERCE, ST. LUCIE COUNTY, FLORIDA, RUN SOUTH ALONG THE WEST LINE OF SAID SOUTHEAST QUARTER OF THE SOUTHEAST QUARTER, A DISTANCE OF 580 FEET MORE OR LESS, THENCE EASTERLY PARALLEL TO THE NORTH LINE OF SAID SOUTHEAST QUARTER OF THE SOUTHEAST QUARTER, 30 FEET TO A POINT, SAID POINT BEING THE SOUTHWEST CORNER OF PROPERTY LEASED TO THE ARMY BOARD OF THE STATE OF FLORIDA AND THE POINT OF BEGINNING OF LANDS HEREIN DESCRIBED:

FROM SAID POINT OF BEGINNING CONTINUE EASTERLY ALONG THE SOUTH LINE OF SAID ARMY PROPERTY A DISTANCE OF 420 FEET; THENCE SOUTHERLY AND PARALLEL TO THE WEST LINE OF SAID SOUTHEAST QUARTER OF THE SOUTHEAST QUARTER, A DISTANCE OF 207.43 FEET; THENCE WEST ALONG A LINE PARALLEL TO AND 207.43 FEET SOUTH OF SAID SOUTH LINE OF ARMY, A DISTANCE OF 420.00 FEET; THENCE NORTHERLY PARALLEL TO AND 30 FEET EASTERLY OF THE WEST LINE OF SAID SOUTHEAST QUARTER OF THE SOUTHEAST QUARTER, A DISTANCE OF 207.43 FEET TO THE POINT OF BEGINNING.

**ARMORY BOARD  
NOT PLATTED**

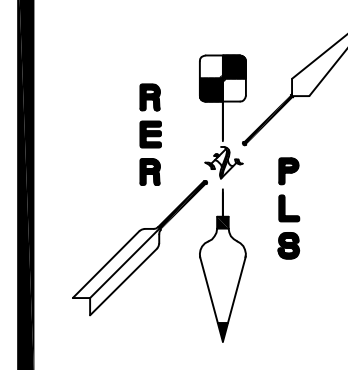
S 90°00'00" E (L.D.) 420.00' (L.D.)  
S 89°52'06" E (M) 419.96' (M)

**ABBREVIATIONS:**

A/C = AIR CONDITIONER  
(C) = CALCULATED  
(C.F.T.) = CALCULATED FROM TRAVERSE  
C = CENTERLINE  
C.B.S. = CONCRETE BLOCK STRUCTURE  
E/P = EDGE OF PAVEMENT  
E.O.W. = EDGE OF WATER  
E.F.B. = ELECTRONIC FIELD BOOK  
EL. = ELEVATION  
FIRM = FLOOD INSURANCE RATE MAPS  
FND. = FOUND  
(M) = MEASURED  
N.A.V.D. OF 1929 = NATIONAL GEODETIC VERTICAL DATUM OF 1929.  
N.A.V.D. OF 1988 = NORTH AMERICAN VERTICAL DATUM OF 1988.

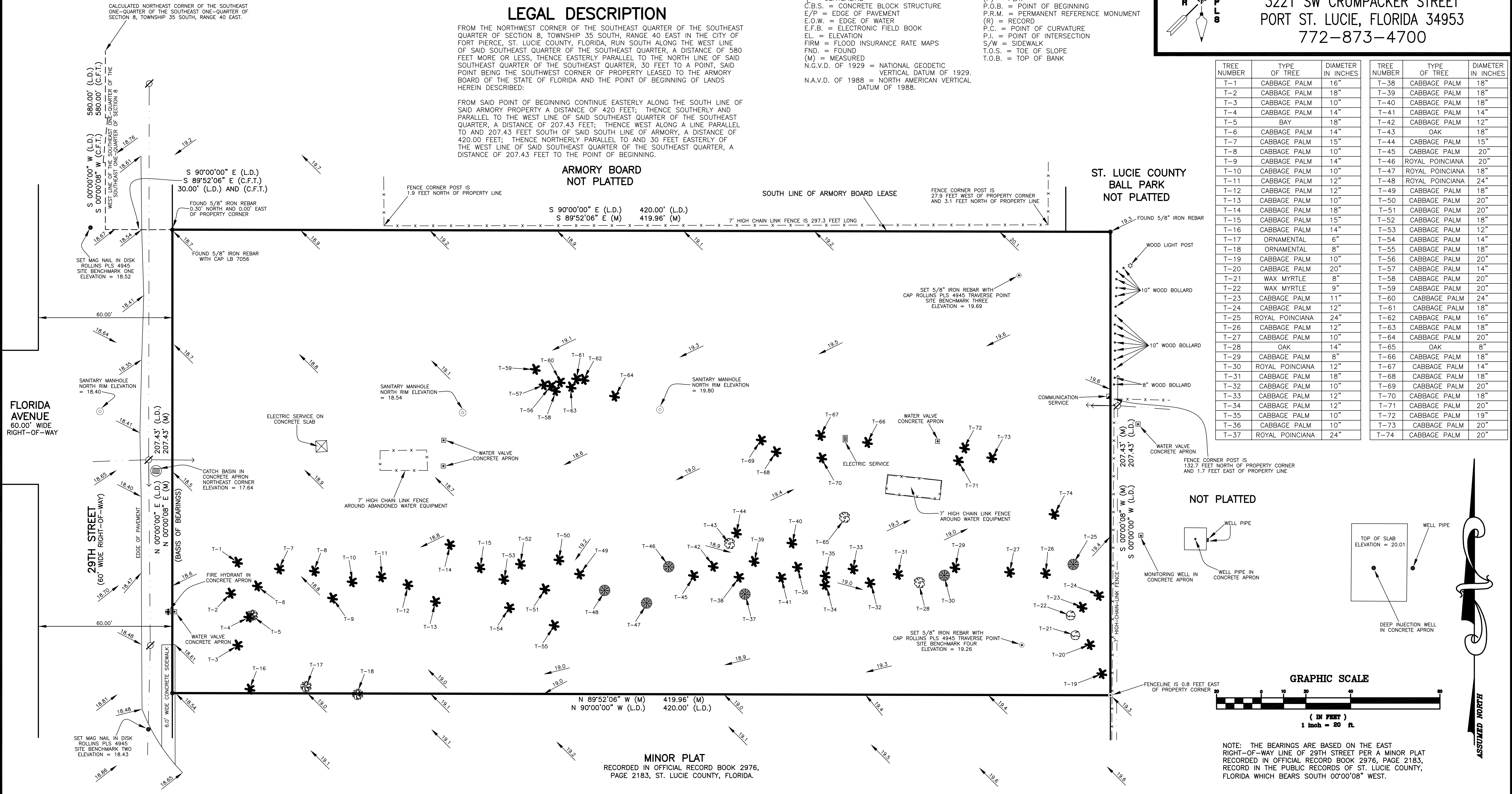
**ABBREVIATIONS:**

N.T.S. = NOT TO SCALE  
O/S = OFFSET  
P.C.P. = PERMANENT CONTROL POINT  
(P) = PLAT  
P.O.B. = POINT OF BEGINNING  
P.R.M. = PERMANENT REFERENCE MONUMENT  
(R) = RECORD  
P.C. = POINT OF CURVATURE  
P.I. = POINT OF INTERSECTION  
S/W = SIDEWALK  
T.O.S. = TOE OF SLOPE  
T.O.B. = TOP OF BANK

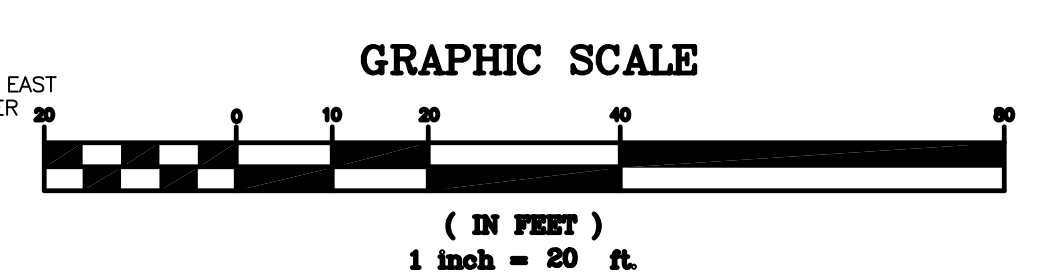


**ROLAND E. ROLLINS**  
**PROFESSIONAL LAND SURVEYOR**  
3221 SW CRUMPACKER STREET  
PORT ST. LUCIE, FLORIDA 34953  
772-873-4700

TREE NUMBER	TYPE OF TREE	DIAMETER IN INCHES	TREE NUMBER	TYPE OF TREE	DIAMETER IN INCHES
T-1	CABBAGE PALM	16"	T-38	CABBAGE PALM	18"
T-2	CABBAGE PALM	18"	T-39	CABBAGE PALM	18"
T-3	CABBAGE PALM	10"	T-40	CABBAGE PALM	18"
T-4	CABBAGE PALM	14"	T-41	CABBAGE PALM	14"
T-5	BAY	18"	T-42	CABBAGE PALM	12"
T-6	CABBAGE PALM	14"	T-43	OAK	18"
T-7	CABBAGE PALM	15"	T-44	CABBAGE PALM	15"
T-8	CABBAGE PALM	10"	T-45	CABBAGE PALM	20"
T-9	CABBAGE PALM	14"	T-46	ROYAL POINCIANA	20"
T-10	CABBAGE PALM	10"	T-47	ROYAL POINCIANA	18"
T-11	CABBAGE PALM	12"	T-48	ROYAL POINCIANA	24"
T-12	CABBAGE PALM	12"	T-49	CABBAGE PALM	18"
T-13	CABBAGE PALM	10"	T-50	CABBAGE PALM	20"
T-14	CABBAGE PALM	18"	T-51	CABBAGE PALM	20"
T-15	CABBAGE PALM	15"	T-52	CABBAGE PALM	18"
T-16	CABBAGE PALM	14"	T-53	CABBAGE PALM	12"
T-17	ORNAMENTAL	6"	T-54	CABBAGE PALM	14"
T-18	ORNAMENTAL	8"	T-55	CABBAGE PALM	18"
T-19	CABBAGE PALM	10"	T-56	CABBAGE PALM	20"
T-20	CABBAGE PALM	20"	T-57	CABBAGE PALM	14"
T-21	WAX MYRTLE	8"	T-58	CABBAGE PALM	20"
T-22	WAX MYRTLE	9"	T-59	CABBAGE PALM	20"
T-23	CABBAGE PALM	11"	T-60	CABBAGE PALM	24"
T-24	CABBAGE PALM	12"	T-61	CABBAGE PALM	18"
T-25	ROYAL POINCIANA	24"	T-62	CABBAGE PALM	16"
T-26	CABBAGE PALM	12"	T-63	CABBAGE PALM	18"
T-27	CABBAGE PALM	10"	T-64	CABBAGE PALM	20"
T-28	OAK	14"	T-65	OAK	8"
T-29	CABBAGE PALM	8"	T-66	CABBAGE PALM	18"
T-30	ROYAL POINCIANA	12"	T-67	CABBAGE PALM	14"
T-31	CABBAGE PALM	18"	T-68	CABBAGE PALM	18"
T-32	CABBAGE PALM	10"	T-69	CABBAGE PALM	20"
T-33	CABBAGE PALM	12"	T-70	CABBAGE PALM	18"
T-34	CABBAGE PALM	12"	T-71	CABBAGE PALM	20"
T-35	CABBAGE PALM	10"	T-72	CABBAGE PALM	19"
T-36	CABBAGE PALM	10"	T-73	CABBAGE PALM	20"
T-37	ROYAL POINCIANA	24"	T-74	CABBAGE PALM	20"



**NOT PLATTED**



NOTE: THE BEARINGS ARE BASED ON THE EAST RIGHT-OF-WAY LINE OF 29TH STREET PER A MINOR PLAT RECORDED IN OFFICIAL RECORD BOOK 2976, PAGE 2183, RECORD IN THE PUBLIC RECORDS OF ST. LUCIE COUNTY, FLORIDA WHICH BEARS SOUTH 00°00'08" WEST.

**BENCHMARK REFERENCE:**  
FOUND BRASS DISK IN CONCRETE STAMPED CORP OF ENGINEERS US ARMY SURVEY MARK Y 525 137.8 FEET NORTHEAST OF THE INTERSECTION OF OKEECHOBEE ROAD AND 29TH STREET, 20.3 FEET SOUTHWEST OF THE CENTERLINE OF THE WEST BOUND LANE OF OKEECHOBEE ROAD, 19.5 FEET NORTHWEST OF THE CENTERLINE OF OKEECHOBEE ROAD EAST BOUND LANE AND 3.3 FEET SOUTHWEST OF A CARSONITE WITNESS POST IN MEDIAN. ELEVATION = 17.749 NORTH AMERICAN VERTICAL DATUM OF 1988.

ELEVATIONS BASED ON N.A.V.D. OF 1988 AND SHOWN THUS 1.0

**FLOOD ELEVATION INFORMATION**

MAP NUMBER 12111C0178 J DATE OF FIRM FEB. 16, 2012  
COMMUNITY NUMBER 120286 PANEL 0178  
FIRM ZONE X SUFFIX J

ADDENDUM	FIELD BOOK	PAGE	DATE	BY	CHECKED
BOUNDARY SURVEY	E.F.B.		10/24/2014	R.E.R.	R.E.R.
TOPOGRAPHIC SURVEY	E.F.B.		10/24/2014	R.E.R.	R.E.R.

**LEGEND:**

- = SET 5/8" IRON REBAR WITH CAP P.L.S. NUMBER 4945
- = SET NAIL IN DISK P.L.S. NUMBER 4945 UNLESS OTHERWISE NOTED.
- ⊙ = MANHOLE (M.H.)
- ☐ = CATCH BASIN (C.B.)
- ⚡ = FIRE HYDRANT (F.H.)
- ⊞ = WATER METER (W.M.)
- ⊞ = WOOD POWER POLE (WD. P.P.)
- ⊞ = CONCRETE POWER POLE (CONC. P.P.)
- ⊞ = ANCHOR AND GUY WIRE
- — — = OVERHEAD WIRES
- — — = NOT TO SCALE
- X — = FENCELINE

**NOTES:**

- LANDS SHOWN HEREON WERE NOT ABSTRACTED FOR EASEMENTS, OWNERSHIP AND/OR RIGHT-OF-WAYS OF RECORD.
- NO UNDERGROUND OR INTERIOR IMPROVEMENTS WERE LOCATED EXCEPT AS NOTED.
- LEGAL DESCRIPTION AS SUPPLIED BY CLIENT.
- BUILDING TIES ARE 90° OR RADIAL TO THE PROPERTY LINE.
- ALL EASEMENTS SHOWN ARE PER RECORD PLAT UNLESS OTHERWISE NOTED.

TRACT SQUARE FOOTAGE: 2.000± ACRES  
SCALE: 1" = 20'

**CERTIFICATIONS AS PROVIDED AND WORDED BY CLIENT:**

CERTIFY TO:

- CITY OF FORT PIERCE UTILITIES
- NEW ALLIED TECHNOLOGIES

NOT VALID WITHOUT THE SIGNATURE AND THE ORIGINAL RAISED SEAL OF A FLORIDA LICENSED SURVEYOR AND MAPPER.

PLOT DATE AND TIME: 11/11/2014 10:20 AM EST

DATE OF LAST FIELD WORK: 10/24/2014

I HEREBY CERTIFY THAT THE SURVEY SHOWN HEREON COMPLIES WITH MINIMUM TECHNICAL STANDARDS FOR SURVEYS AS CONTAINED IN CHAPTER 5J-17, FLORIDA ADMINISTRATIVE CODE, PURSUANT TO SECTION 472.027, FLORIDA STATUTES.

ROLAND E. ROLLINS DATE OF SIGNATURE  
PROFESSIONAL LAND SURVEYOR  
FLORIDA REGISTRATION NUMBER 4945

JOB NUMBER: RR141004