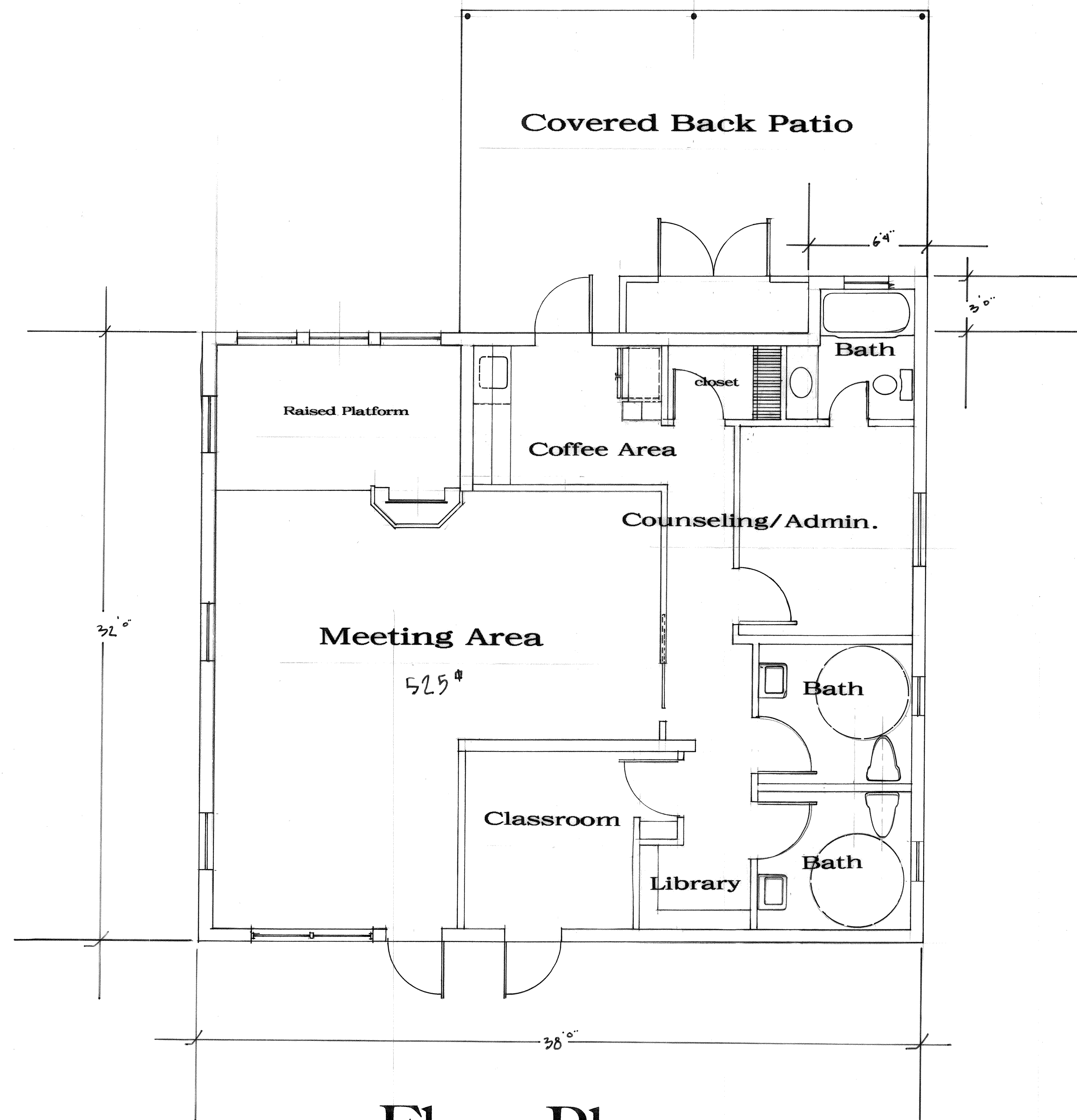


Tabulations  
1235 Square Feet of Conditioned Area



**Floor Plan**  
Scale is 1/4" = 1'0"

Existing Building

Connect to FPUA central water service.  
Upgrade existing septic system.  
Electrical service supplied by FPUA.

Treasure Coast Bible Assembly  
4146 Edwards Road  
Fort Pierce, Florida

Parcel# 2430.114.0002.000.1  
Section 30, Township 35s, Range 40E

Plan By: Cleveland Design Group Inc.  
100 Ave. A, Suite 2E  
Fort Pierce, Florida  
ph. 772.464.2010, vidandr2@yahoo.com