

City Marina Reconstruction

Phase II – Docks

Construction Update



Week 2 - Float Assembly



Week 3 – 320' L-Dock Main walkway



- Week 3
- 320 Feet of L- Dock Main walkway installed



L-Dock Entrance Pier Installation



M-Dock Installation



L-Dock Finger Pier Installation



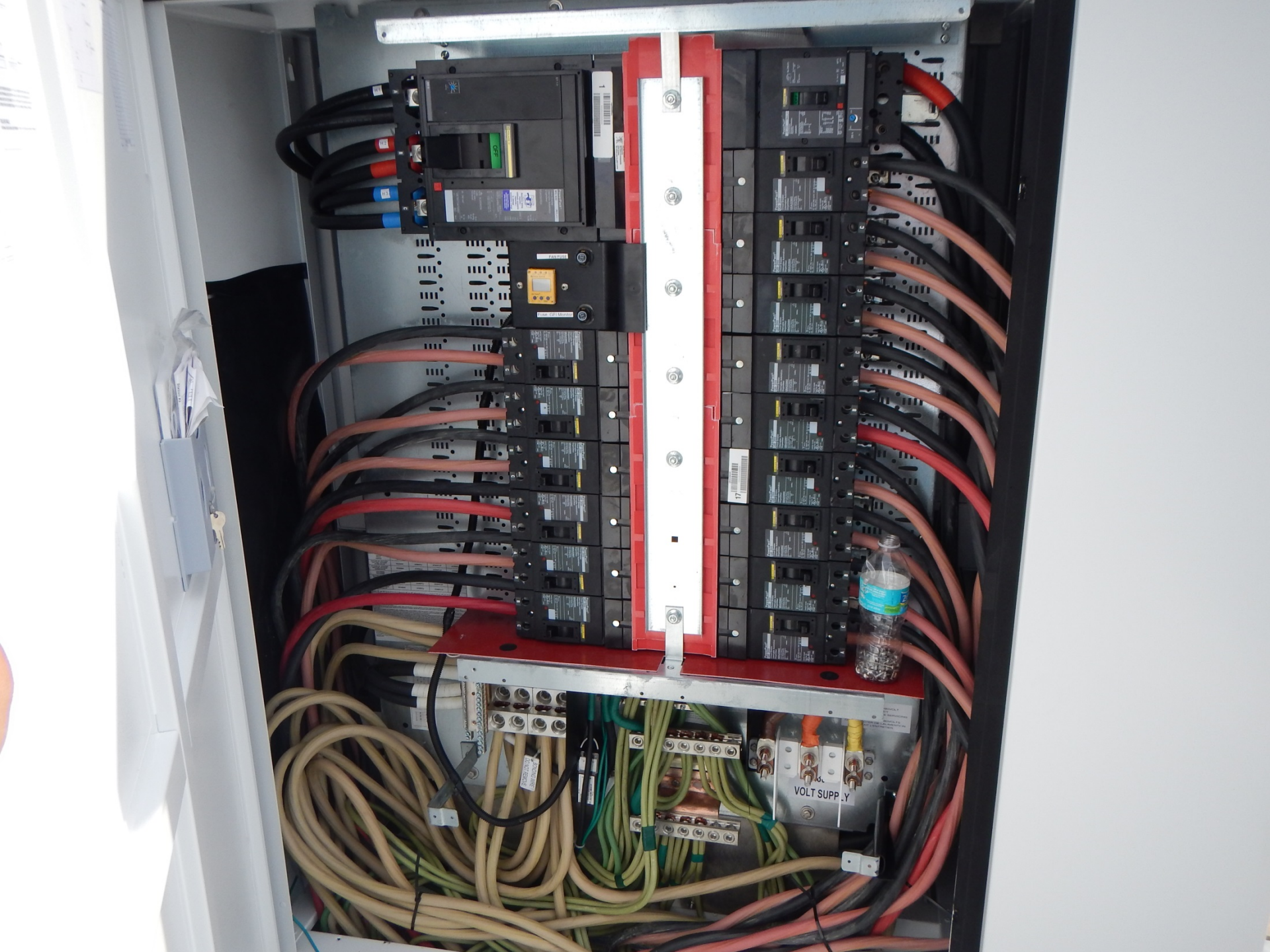
Week 8

Slips installed North Side of L-Dock





Electrical System wiring



Terminal block with multiple colored wires (red, blue, black) connected to various terminals. A label with a barcode and the number '1' is visible.

Control module with a yellow digital display and several push buttons. A label with the number '1' is visible.

Vertical stack of black modules, likely relays or contactors, mounted on a red metal rail. Each module has a label with technical specifications.

Large terminal block on the right side of the cabinet, densely packed with numerous black and red wires. A label with a barcode and the number '17' is visible.



Terminal block at the bottom of the cabinet, labeled 'VOLT SUPPLY'. It is connected to thick yellow and green cables. A label with the number '1' is visible.

LT-head and N Dock Installation



Week 9





Week 13

Week 18

B-Dock Mooring Piles & Finger Piers



Bellingham

MARINE

1-800-738-5673

Construction of Observation Deck





B-Dock Plumbing and Electrical

Week 20



A-Main Walk Way and Finger Piers



Week 22

