

Planning Department

Conditional Use w/ New Construction



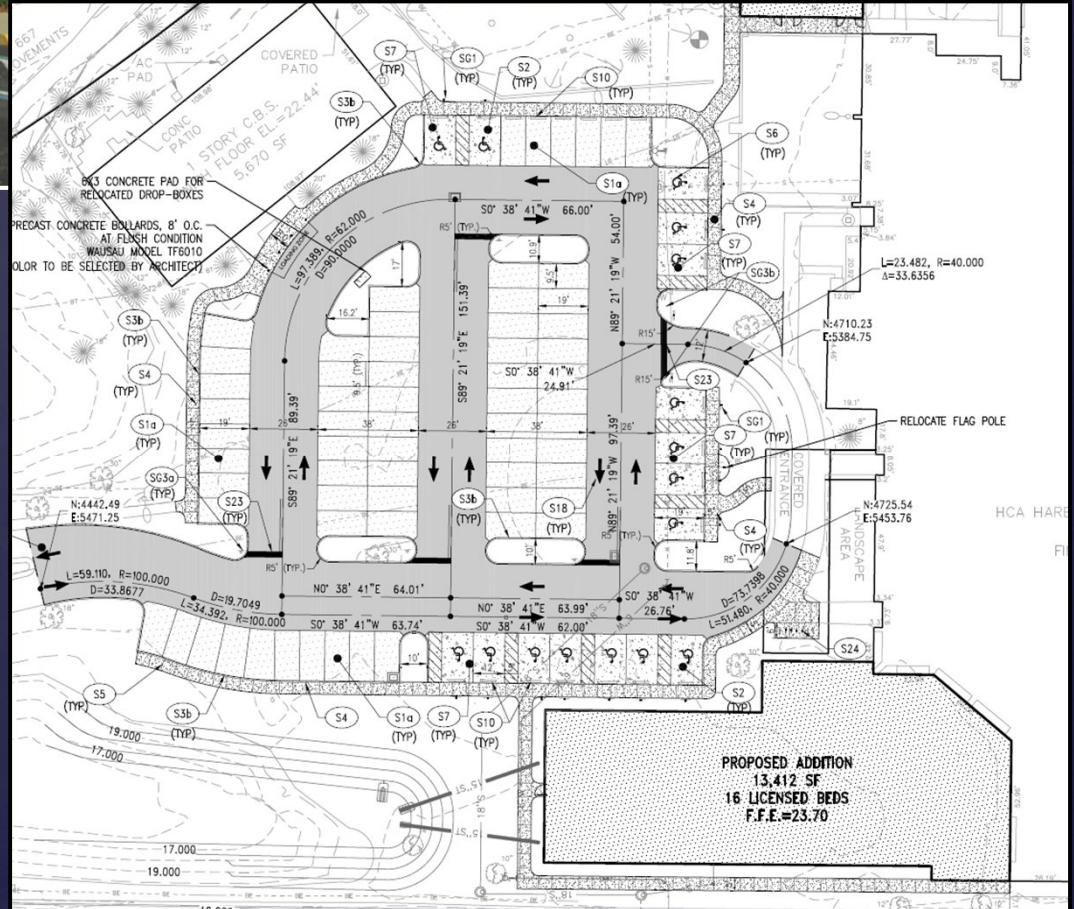
Lawnwood Pavilion – 1860 N. Lawnwood Circle



- Approximately 7.5 acres
- Zoned C-1, Office Commercial w/ Institutional FLU
- 52,375 sq. ft. facility has 58 licensed beds

-
- 13,412 sq. ft. expansion
 - Proposing an additional 16 beds
 - Oxygen Park and generator enclosure
 - Proposed over existing impervious area
 - Landscaping: Live Oaks, Crape Myrtle, Royal Palms

Existing Facility



Mail Notification



Notices sent: 84

Notices received: 5

Approve: 4

Disapprove: 1

Staff Recommendations...

Staff recommends that the City Commission approve the Conditional Use and Site Plan application.



Clarissa Davis

cdavis@city-ftpierce.com

(772) 467-3742