

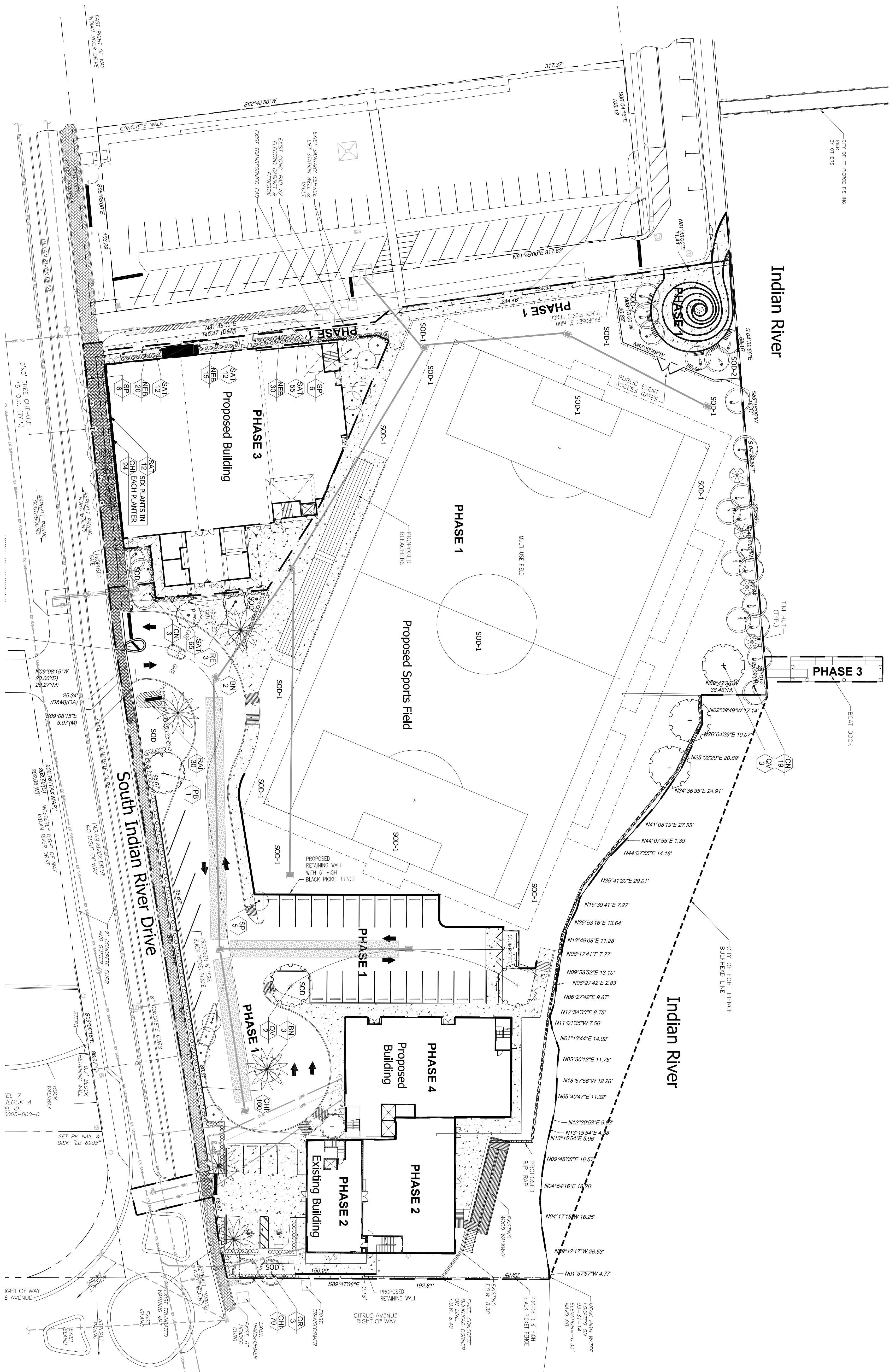
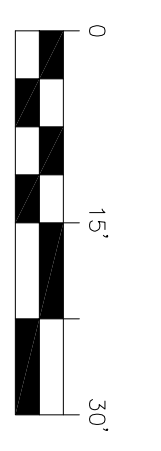
Name: Jeffrey W. Smith, R.L.A.
 License #: LA0001635

Professional Seal of Jeffrey W. Smith, R.L.A., License No. LA0001635, State of Florida, expires 12/31/2015. This seal is not valid for use on any project unless it is accompanied by a current Certificate of Insurance from a licensed Florida contractor.

St. Andrews School

City of Fort Pierce, Florida

DESIGNED: JWS
 PROJECT: 15-0103
 DATE: 1-22-2015
 REVISIONS:
 Phase Lines 2-12-2015
 New Base 5-20-2015
 New Base/Planter 6-11-2015
 Gym Walk Planter 7-31-2015



Landscape Data

Vehicle Use Area, Retention Areas and Building Landscaping Adjacent to R.O.W. (West Bulfinch)
 Sec. 22-18(1)(4)
 Provided = 0 Trees (4 Trees = 18 Palms @ 3 Palms = 11 Trees = 6 Trees)
 Shrubs Required = Continuous Hedge @ 2' o.c.
 335.11 / 2' o.c. = 167 Shrubs
 Provided = 175 Shrubs

Vehicle Use Area, Retention Areas and Building Landscaping to Adjacent Property, (South Bulfinch)
 Sec. 22-18(1)(6)
 Trees Required = 10' Wide Landscape Strip with 1 Tree/200 s.f.
 401.1 x 1' x 1' / 200 = 2 Trees
 Provided = 2 Trees

Interior Vehicular Use Area
 Sec. 22-18(1)(7) 1 s.f. of interior landscaping per 15 s.f. of vehicular use area (24,650 s.f./15 = 1,643 s.f.)
 Landscape Area Provided = 1,800 s.f.
 Trees Required = 1 Tree/100 s.f. of interior landscape area
 24,650 s.f./100 = 246 s.f./100 = 19 Trees
 Provided = 10 Trees (3 Trees = 21 Palms = 1 Tree = 7 Trees)

Maximum Use of Palm Trees
 Required = Fifty (50) percent of the required trees shall be species other than palm trees
 Maximum Palms Allowed = 48 (48 Palms @ 3 Palms = 1 Tree = 16 Trees)
 Total Palms Provided = 47 (47 Palms @ 3 Palms = 1 Tree = 16 Trees)
 Total Trees Provided = 25 Trees (3 Trees + 47 Palms @ 3 Palms = 1 Tree = 16 Trees)

Plant List

QTY	SYM.	SPECIES	COMMON NAME/DESCRIPTION	SIZE	SPACING	REMARKS
3	CANOPY	ORNAMENTAL TREES				
1	GR	GLISIA ROSA	PITCH APPLE	12' x 5.25' DBH.	A.S.	FILL CANOPY, 5' C.T. MIN.
1	GR	PERSEA BORBONIA	FLORIDA RED BAY	12' x 5.25' DBH.	A.S.	FILL CANOPY, 5' C.T. MIN.
5	OV	QUERCUS VIRGINIANA	LIVE OAK	12' x 5.25' DBH.	A.S.	FILL CANOPY, 5' C.T. MIN.
5	BN	BISMARCKIA NOBILIS	BISMARCK PALM	12' C.T.	A.S.	MATCHED SPECIMENS
3	RE	COCCUS NICIFERA MAYPAIN	MAYPAIN COCONUT PALM	12' C.T.	A.S.	CURVED TRUNKS
17	SP	ROYSTONIA ELATA	ROYAL PALM	12' C.T.	A.S.	MATCHED
17	SP	SABAL PALMETTO	SABAL PALM	12' C.T.	A.S.	STOCK TRUNKS
166	SAT	SCHERFLERA ARBORICOLA TRINETTE	SCHERFLERA TRINETTE	43.2 x 2'	2' O.C.	FILL & THICK
234	CHP	CHRYSOBALANUS COCA	COCCO PALM	43.2 x 2'	2' O.C.	FILL & THICK
24	OV	INDIAN ROVER PALM	INDIAN ROVER PALM	43.2 x 2'	2' O.C.	FILL & THICK
30	RAI	RAPIHOLEPIS INDICA	INDIAN HANTHIONE	43.2 x 2'	2' O.C.	FILL & THICK
SODS						
SOD-1	CANOPY	SPP. CELEBRATION	CELEBRATION BERMUDA			SEE SPECS
SOD-2	PASPALLUM NOTATUM	BAHIA SOD				SEE SPECS
SOD-3	STENOTAPHRUM SECUNDATUM	PALMETTO ST. AUGUSTINE SOD				SEE SPECS

NOTE: D.B.H. IS MEASURED 4.5' ABOVE GRADE