

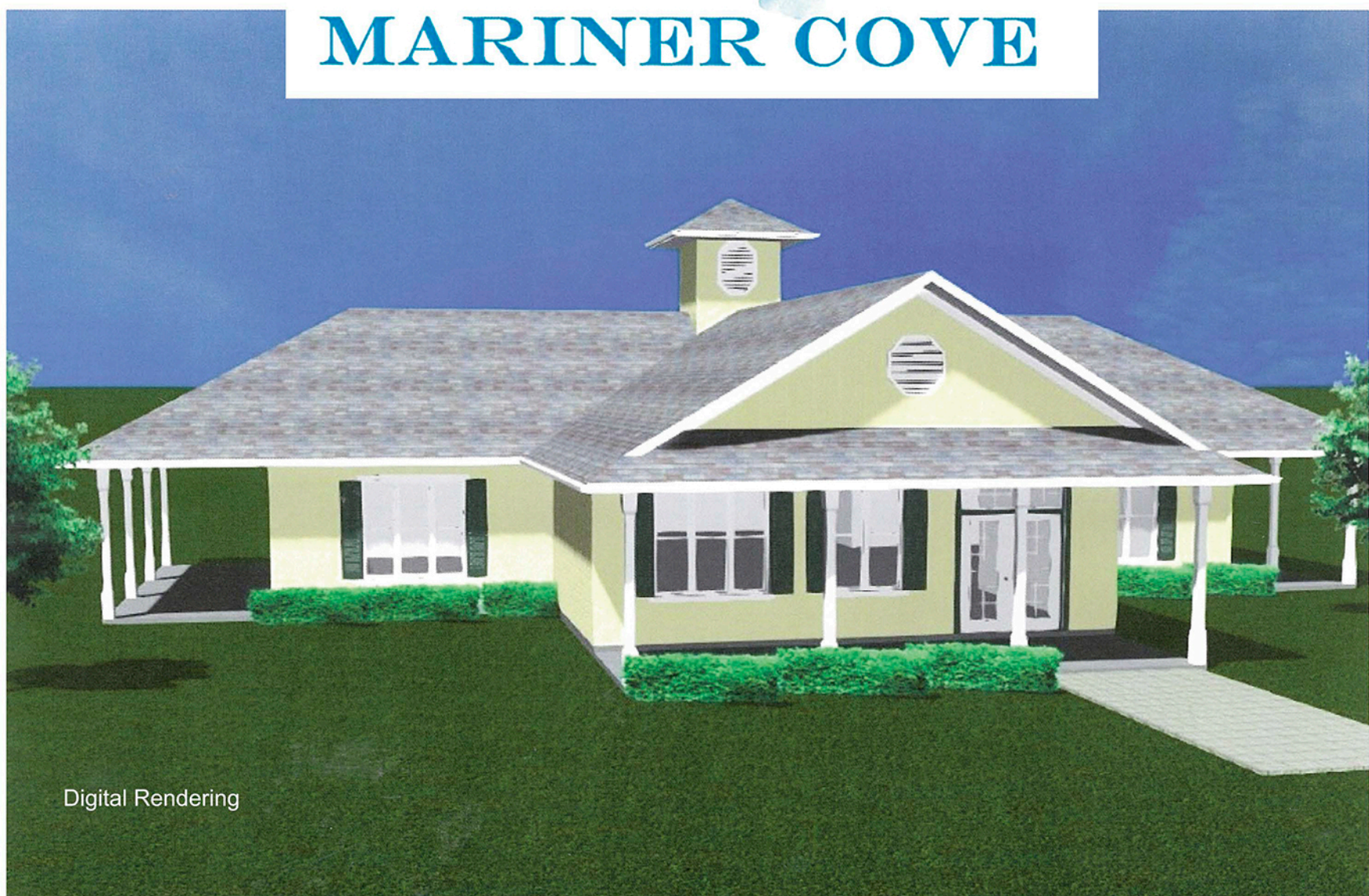
DEVELOPMENT EXHIBIT FOR  
**MARINER COVE BUILDERS, LLC**

**W. F. McCain & Associates, Inc.**  
INNOVATIVE SOLUTIONS IN CIVIL AND ENVIRONMENTAL ENGINEERING SERVICES  
CERTIFICATE OF AUTHORIZATION NO. 00008221  
1171 19TH STREET  
VERO BEACH, FLORIDA 32960  
PHONE (772)770-1093  
FAX (772)770-1508

**MARINER COVE**  
CITY OF FT. PIERCE FLORIDA

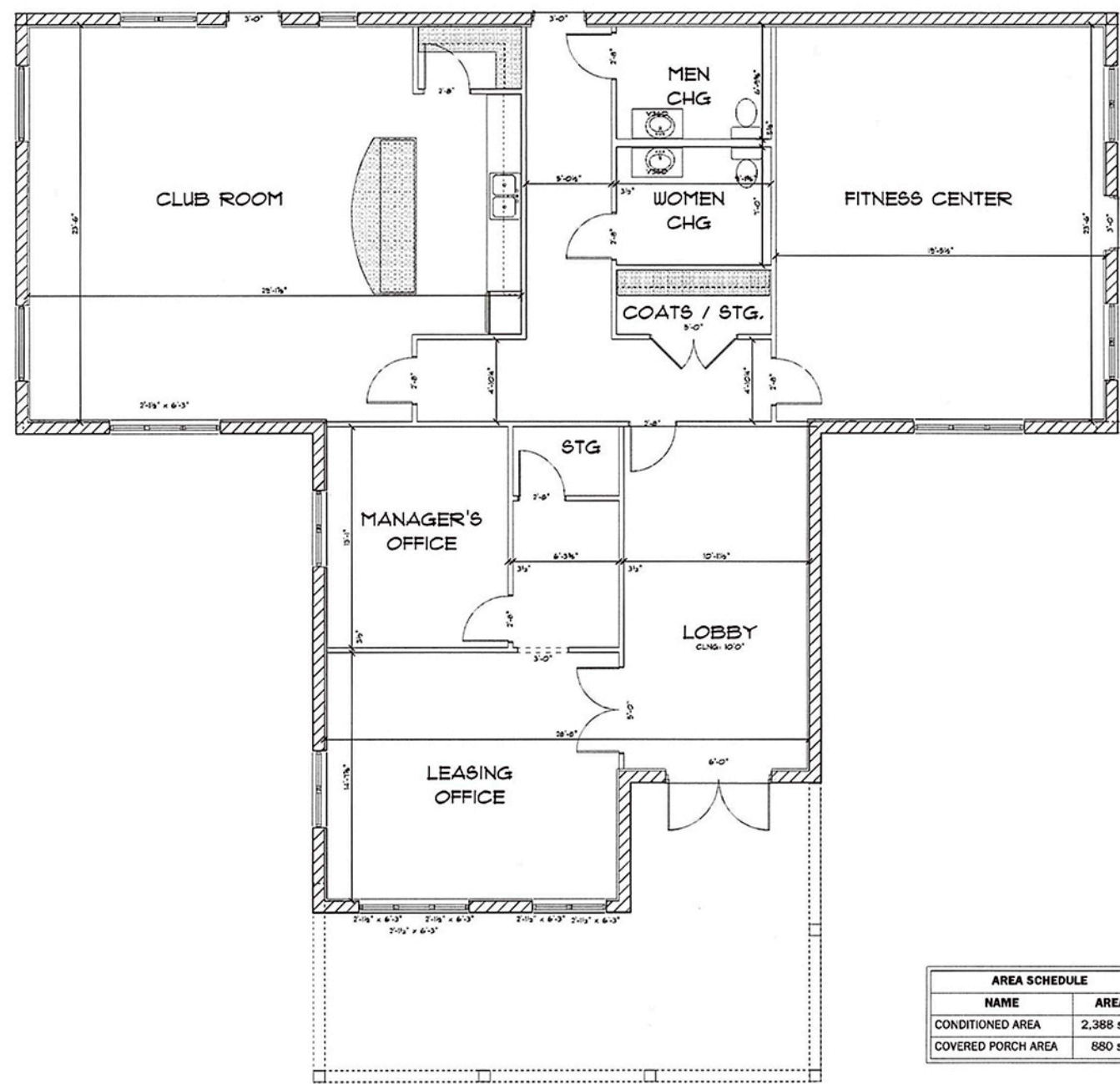


# MARINER COVE



Digital Rendering

## CLUBHOUSE



AREA SCHEDULE	
NAME	AREA
CONDITIONED AREA	2,388 sq ft.
COVERED PORCH AREA	680 sq ft.



# MARINER COVE



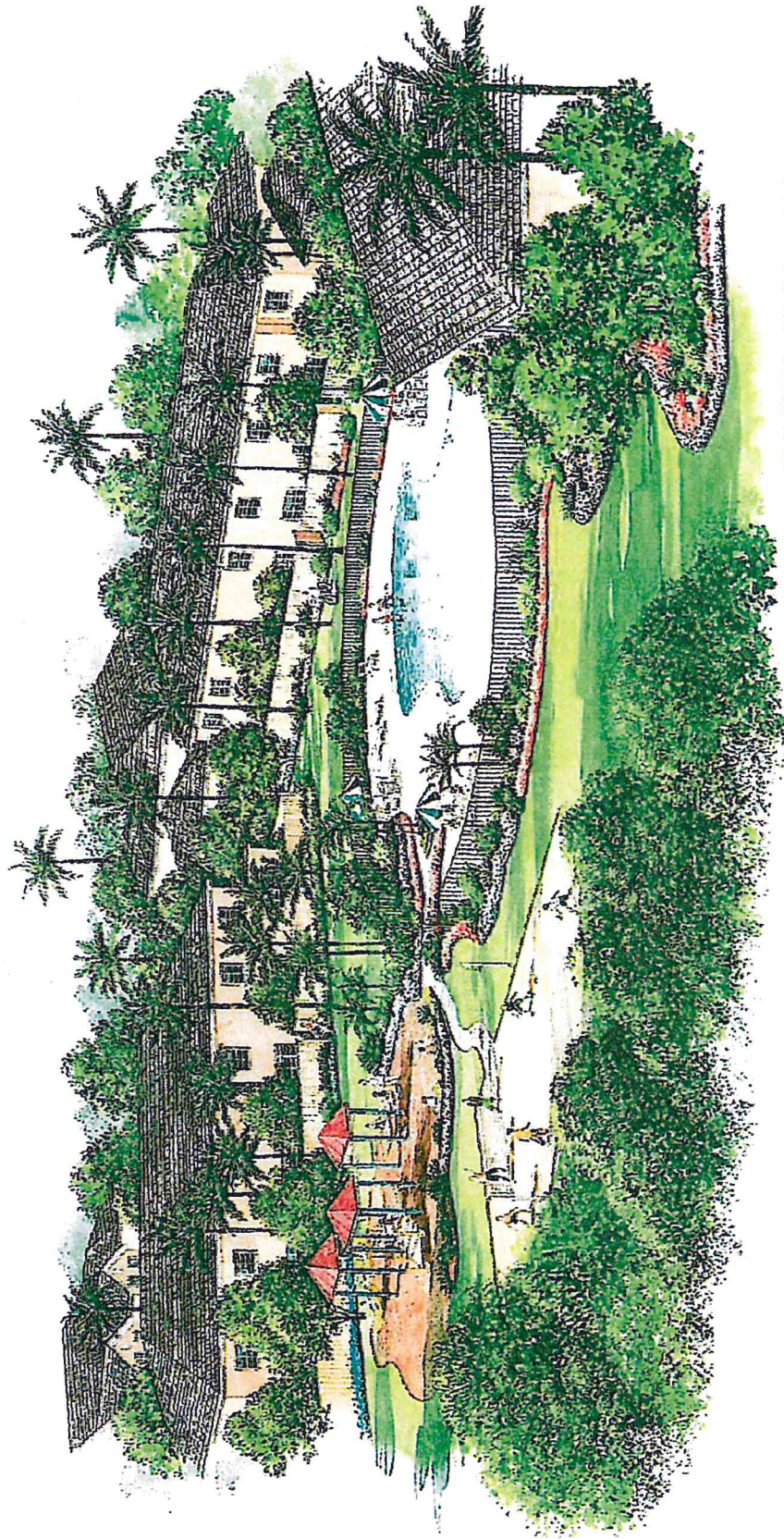


# MARINER COVE





**MARINER COVE**  
TOWNHOMES

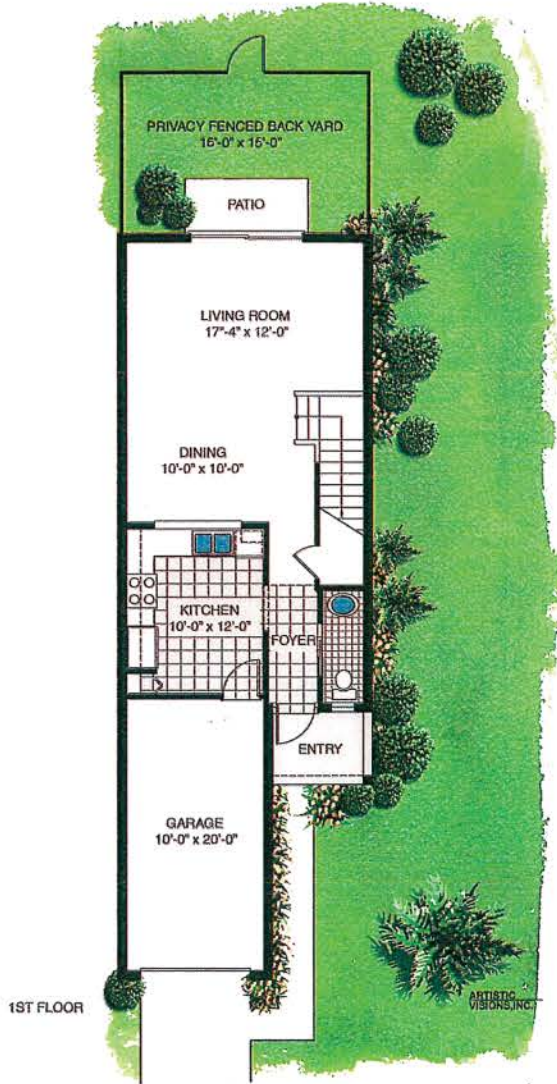


RECREATION AREA

# MARINER COVE

3 Bedroom,  
2.5 Bathroom  
w/Garage

SQUARE FOOTAGE 1250



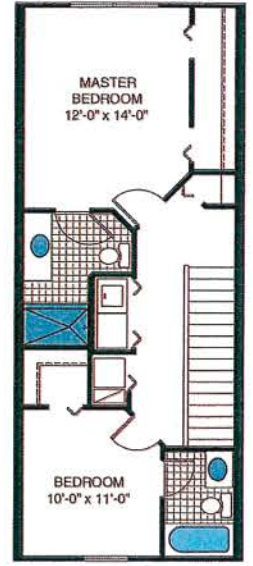
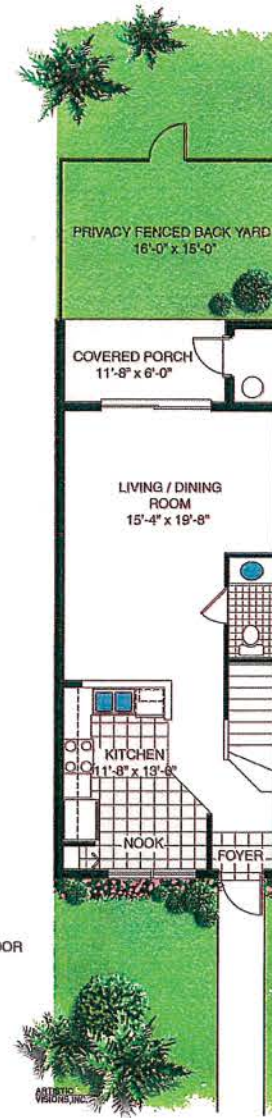
The Holly

VISIONS ARE ARTIST'S CONCEPT. FINISHED PRODUCT MAY VARY. ALL PRICES, PLANS, DIMENSIONS, FEATURES, LANDSCAPING MATERIALS, AND INFORMATION ARE APPROXIMATE AND SUBJECT TO MODIFICATION WITHOUT NOTICE. COPYRIGHT © 2010 SHERWIN CORPORATION. SOME PLANS AND ELEVATIONS OF ALL SHERWIN CORPORATION HOMES ARE COPYRIGHTED. WE WILL ENFORCE OUR STATE AND FEDERAL RIGHTS TO PROTECT THE INVESTMENT OF OUR HOME BUYERS.

# MARINER COVE

2 Bedroom,  
2.5 Bathroom

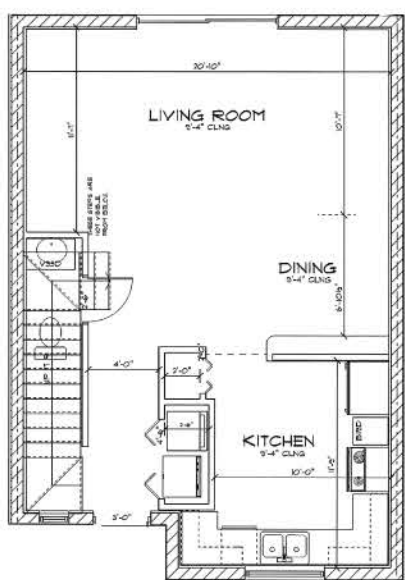
SQUARE FOOTAGE 1100



2ND FLOOR

The Oak

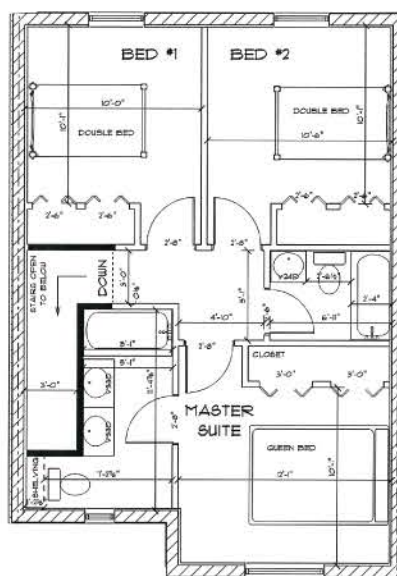
ILLUSTRATION ARE ARTIST'S CONCEPT. FINISHED PRODUCT MAY VARY. ALL PRICES, PLANS, DIMENSIONS, FEATURES, LANDSCAPING MATERIALS, AND INFORMATION ARE APPROXIMATE AND SUBJECT TO MODIFICATION WITHOUT NOTICE. COPYRIGHT © 2010 SHERWIN CORPORATION. SOME PLANS AND ELEVATIONS OF ALL SHERWIN CORPORATION HOMES ARE COPYRIGHTED. WE WILL ENFORCE OUR STATE AND FEDERAL RIGHTS TO PROTECT THE INVESTMENT OF OUR HOME BUYERS.



AREA SCHEDULE	
NAME	AREA
OUTSIDE FLOOR	100.2 sq. ft.
INSIDE FLOOR	100.2 sq. ft.

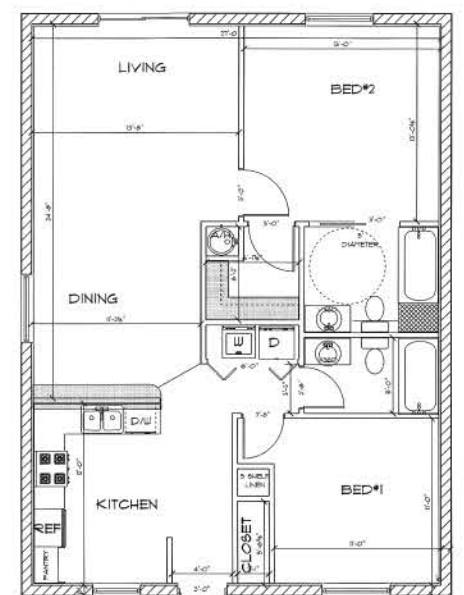
TOTAL: 1192.4 SF  
INTERIOR FACE OF UNIT

FIRST FLOOR PLAN



SECOND FLOOR PLAN

The Pine



AREA SCHEDULE	
NAME	AREA
1/2 WALL UNIT SHOWN SIZE	1074.9 sq. ft.

ADA Unit

The Cedar