





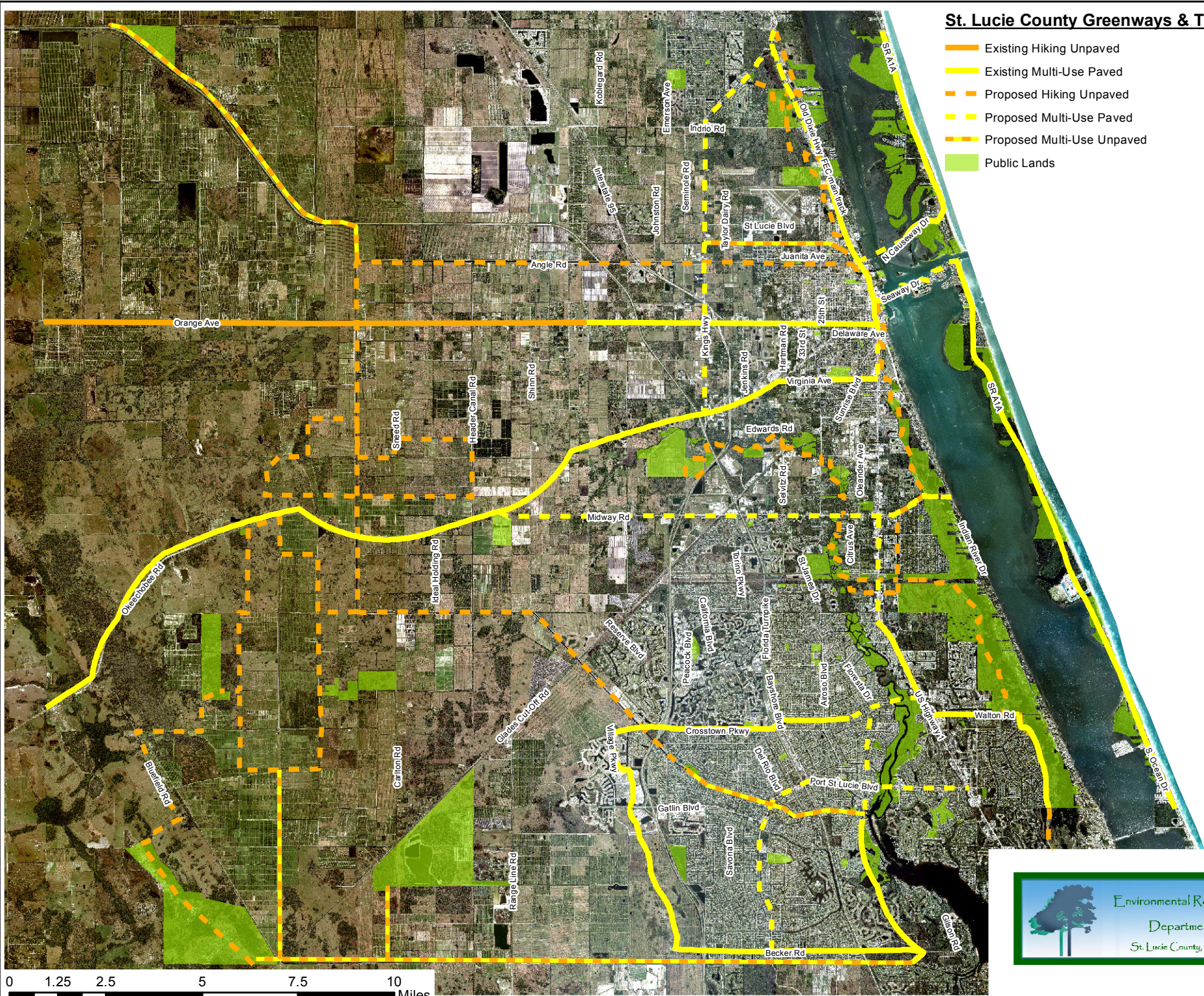
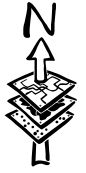


St. Lucie County Greenways & Trails System

-  Existing Hiking Unpaved
-  Existing Multi-Use Paved
-  Proposed Hiking Unpaved
-  Proposed Multi-Use Paved
-  Proposed Multi-Use Unpaved
-  Public Lands





INDIAN RIVER

1237 - All Aboard Florida Rail with Trail Corridor

1742 - Kings Highway Corridor

1554 - East Coast Greenway - St. Lucie Corridor

969 - Treasure Coast Loop Trail Corridor

1740 - Western Greenway Corridor

726 - East Coast Greenway - St. Lucie Corridor

721 - East Coast Greenway - St. Lucie Corridor

1234 - Florida Cracker Trail Corridor

719 - East Coast Greenway - St. Lucie Corridor

971 - Midway Road Connector Corridor

1550 - Midway Road Connector Corridor

1738 - Western Greenway Corridor

1549 - Midway Road Connector Corridor

720 - East Coast Greenway - St. Lucie Corridor

970 - Okeechobee Road Trail Corridor

ST. LUCIE

1551 - Crosstown Parkway Corridor

1553 - East Coast Greenway - St. Lucie Corridor

1548 - East Coast Greenway - St. Lucie Corridor

1741 - Western Greenway Corridor

589 - East Coast Greenway - St. Lucie Corridor

1556 - East Coast Greenway - St. Lucie Corridor

973 - Crosstown Parkway Corridor

1552 - Crosstown Parkway Corridor

1739 - Western Greenway Corridor


974 - Robert B. Jenkins C-23 Trail Corridor

MARTIN

Florida Greenways & Trails System

2015 Draft Opportunity Update:
St. Lucie County

Legend

 PRIORITY CORRIDOR

