



# **FY 2016 Capital Improvement Projects – Update**

City Commission  
Conference Agenda  
January 11, 2016

Prepared By:  
City of Fort Pierce  
Engineering Department

# **FY 2016 Capital Improvement Projects - Update**

## **Proposed Projects:**

### **Reconstruction**

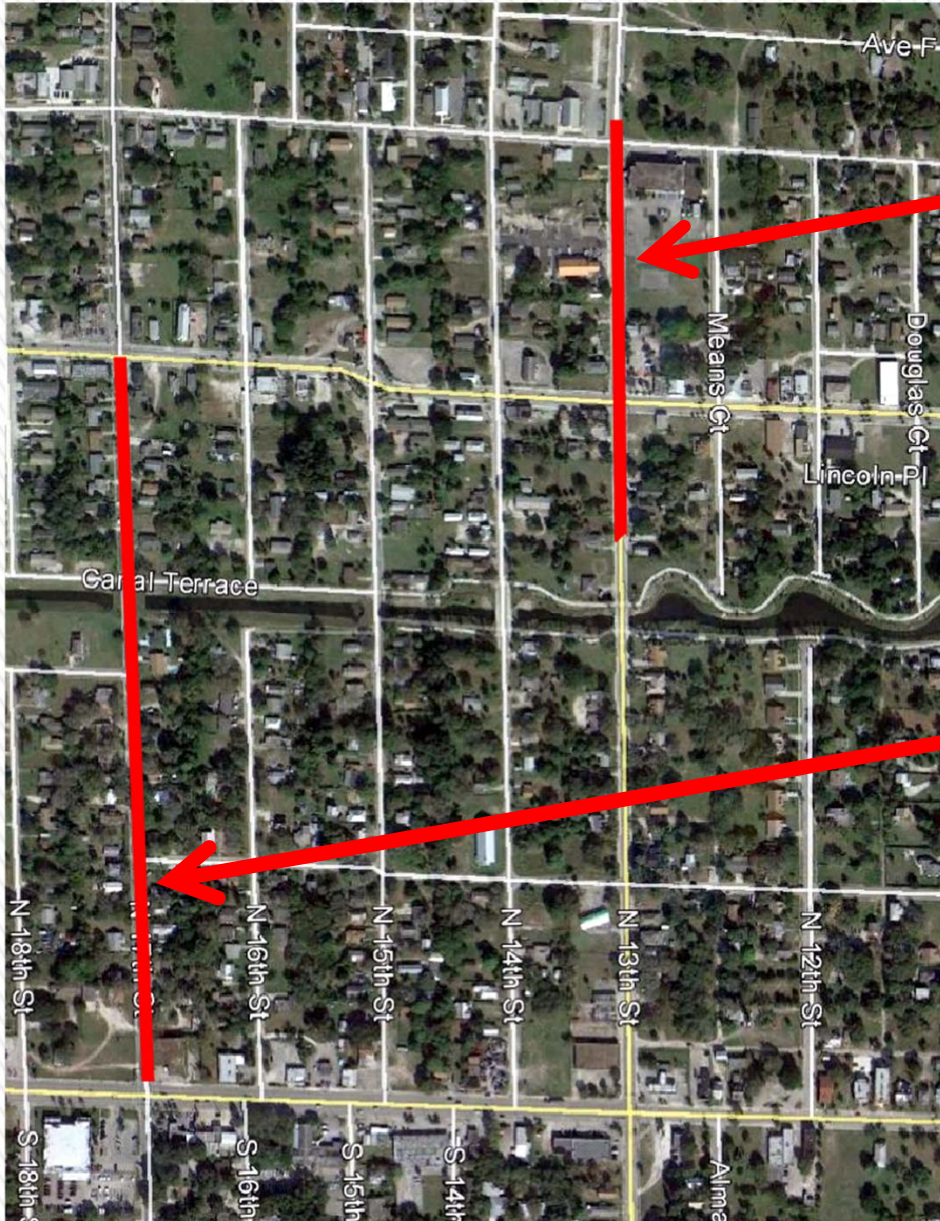
- 13<sup>th</sup> Street ( 350' south of Avenue D to Avenue E)
- 17<sup>th</sup> Street (Orange Avenue to Avenue D)
- 7<sup>th</sup> Street (Wendell Road to S. 10<sup>th</sup> Street)

### **Resurfacing**

- Avenue M (13th Street to 25th Street)
- N 12<sup>th</sup> Street (Ave. H to Ave. K and Ave. L to Ave. M)
- 21<sup>st</sup> Street (Georgia Ave. to Dayman Ave.)
- Birch Street (Dayman Ave. to Nebraska Ave.)
- 23<sup>rd</sup> Street (Nebraska Ave. to Virginia Ave.)

**Projects** 

# FY 2016 Capital Improvement Projects - Update



**13<sup>th</sup> Street – 1,151 Ft.**  
Plans to be completed by January 29, 2016. Advertise for bids 2<sup>nd</sup> week of February 2016

**17<sup>th</sup> Street – 2,076 Ft.**  
Paving and drainage plans to be completed by January 29, 2016. Water and sewer plans estimated to be completed within 60 days. Plan to advertise for bids 2<sup>nd</sup> week of April 2016

**RECONSTRUCTION** ➤

## FY 2016 Capital Improvement Projects - Update

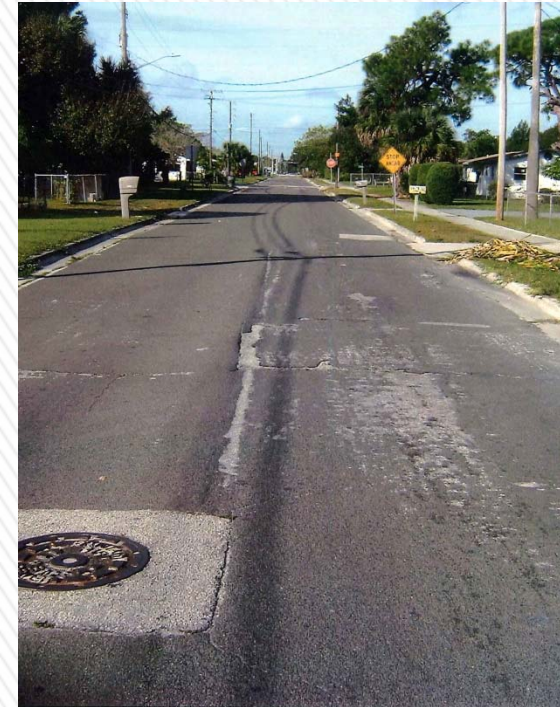
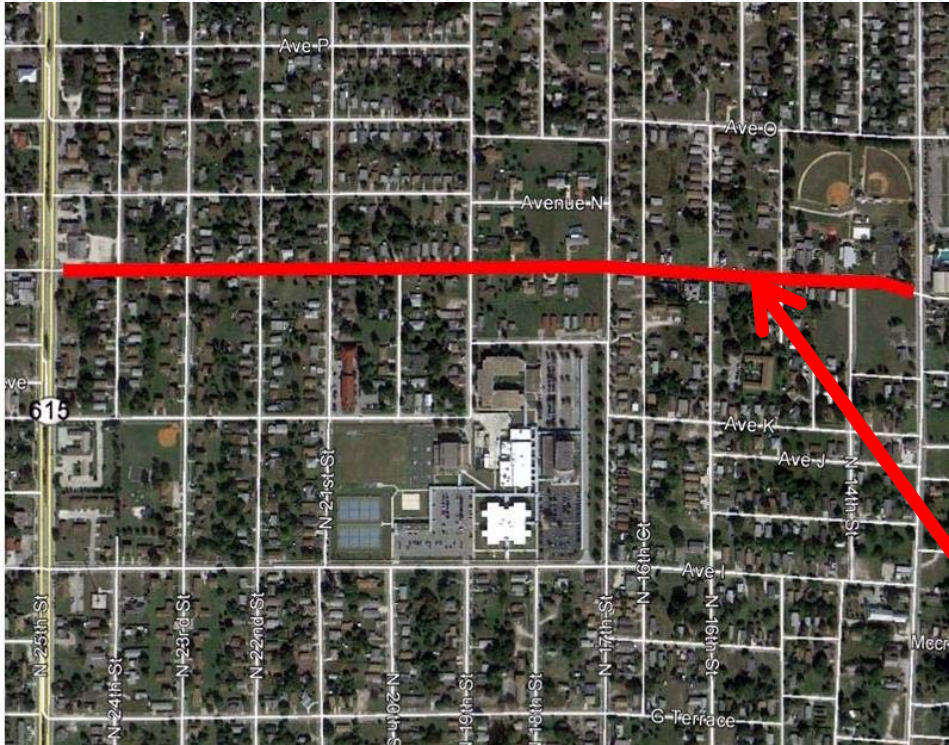


**7<sup>th</sup> Street – 1,128 Ft.  
Survey and base drawings  
completed. Design plans to  
be completed by June  
2016.**

**RECONSTRUCTION**



## FY 2016 Capital Improvement Projects - Update



**Avenue M – 4,117 Ft.  
Proposed mill and  
resurface. Estimated cost  
\$192,000**

**RESURFACING** ➤

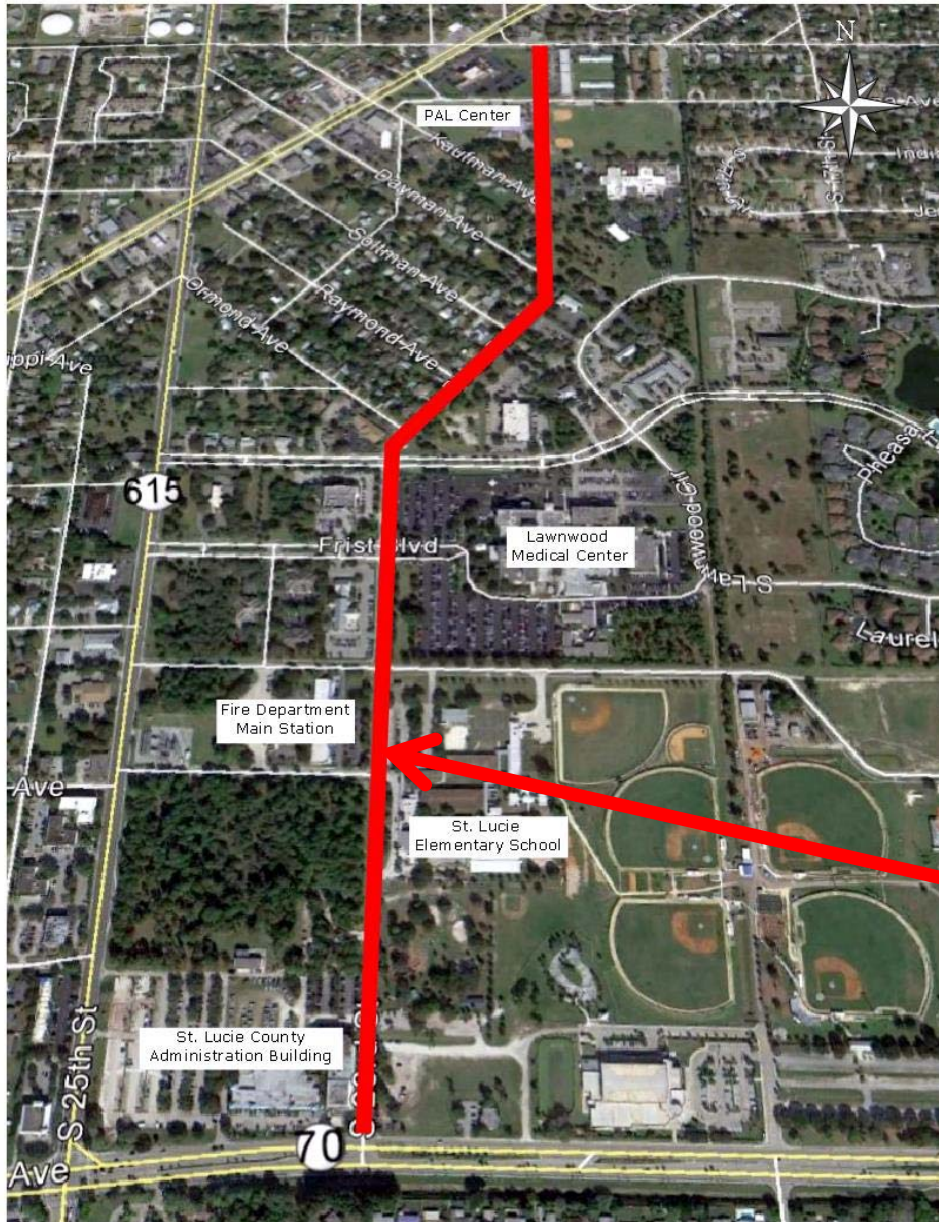
## FY 2016 Capital Improvement Projects - Update



**N. 12<sup>th</sup> Street – 1,313 Ft.  
Proposed resurfacing  
Estimated cost \$35,752**

**RESURFACING** ➤

# FY 2016 Capital Improvement Projects - Update



**21<sup>st</sup>, Birch, 23rd  
Proposed resurfacing.  
Estimated cost \$146,143**

**RESURFACING** ➤

## FY 2016 Capital Improvement Projects - Update

- Estimated Cost for Reconstruction Projects:

- 13<sup>th</sup> Street: \$1,200,000
- 17<sup>th</sup> Street: \$1,700,000
- 7<sup>th</sup> Street: \$ 350,000

TOTAL \$3,250,000

- Estimated Cost for Resurfacing Projects:

- Avenue M \$192,000
- N. 12<sup>th</sup> Street \$ 35,752
- 21<sup>st</sup> / Birch / 23<sup>rd</sup> Street \$146,143

TOTAL \$373,895

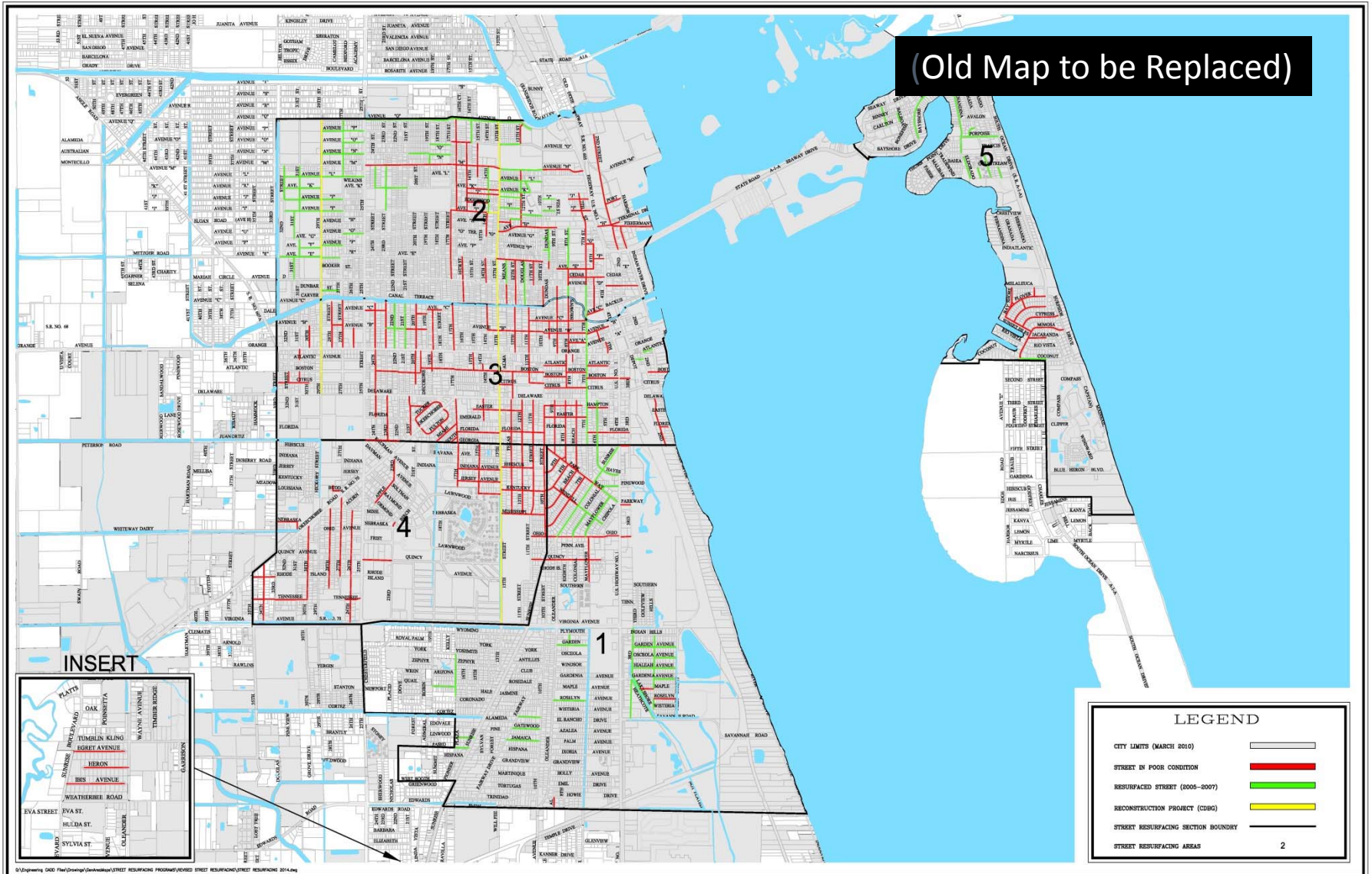
Estimated Cost >

## **FY 2016 Capital Improvement Projects - Update**

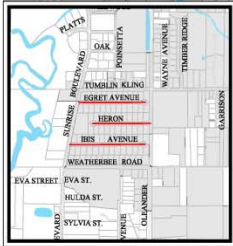
- Engineering is currently working on updating the Street Inventory
  - All information being updated in the field
  - Information being input into GIS system
  - Developing a viewer for ease in information retrieval and logging of current photographs.

Street Inventory 

# FY 2016 Capital Improvement Projects - Update



(Old Map to be Replaced)



LEGEND	
CITY LIMITS (MARCH 2010)	
STREET IN POOR CONDITION	
RESURFACED STREET (2005-2007)	
RECONSTRUCTION PROJECT (CDBG)	
STREET RESURFACING SECTION BOUNDARY	
STREET RESURFACING AREAS	



CITY OF FORT PIERCE  
DEPARTMENT OF ENGINEERING

CITY OF FORT PIERCE  
STREET CONDITIONS MAP

DATE: 7/26/14    DRG. BY: SAA  
SCALE: 1"=500'    DESIGN BY:  
SURVEY BY:    APPROVE BY:



No.	DATE	BY	REVISIONS

SHEET  
1  
OF  
1

# FY 2016 Capital Improvement Projects - Update



## STREET CONDITION

SECTION	NAME	SUFFIX	Owner	MAINT JURIS	FROM	TO	ROW	LENGTH	WIDTH	AREA	CONDITION
N01	AVENUE J		City	FP	25TH STREET	27TH STREET	50	661.3	21	13987.31	5
N01	AVENUE K		City	FP	25TH STREET	27TH STREET	50	666.4	22	14660.89	5
N01	AVENUE L		City	FP	25TH STREET	27TH STREET	0	662.4	22	14572.8	5
N01	AVENUE M		City	FP	25TH STREET	27TH STREET	0	666.2	22	14656.43	3
N01	WILKINS	AVE	City	FP	25TH STREET	27TH STREET	0	665.3	22	14636.67	5



## SIDEWALK CONDITION

SECTION	NAME	FROM	TO	OWNER	MAINT JURIS	LENGTH	WIDTH	AREA	CONDITION
N01	AVENUE J	25TH STREET	27TH STREET	CITY	FP	176.63	5	883.13	8
N01	AVENUE K	25TH STREET	27TH STREET	CITY	FP	590.44	5	2952.19	7
N01	AVENUE J	25TH STREET	27TH STREET	CITY	FP	588.81	5	2944.04	8
N01	AVENUE L	25TH STREET	27TH STREET	CITY	FP	591.53	5	2967.67	8
N01	AVENUE L	25TH STREET	27TH STREET	CITY	FP	590.39	5	2951.95	8
N01	AVENUE M	25TH STREET	27TH STREET	CITY	FP	610.13	5	3050.63	7
N01	WILKINS AVENUE	25TH STREET	27TH STREET	CITY	FP	532.75	5	2663.76	8



## CURB CONDITION

SECTION	NAME	FROM	TO	OWNER	MAINT JURIS	LENGTH	WIDTH	AREA	CONDITION
N01	AVENUE K	25TH STREET	29TH STREET	CITY	FP	628.78	2	1257.55	8
N01	AVENUE K	25TH STREET	27TH STREET	CITY	FP	630.95	2	1261.90	8
N01	AVENUE L	25TH STREET	29TH STREET	CITY	FP	634.02	2	1268.03	8
N01	AVENUE L	25TH STREET	29TH STREET	CITY	FP	626.11	2	1252.22	8
N01	AVENUE M	25TH STREET	27TH STREET	CITY	FP	636.85	2	1273.69	6
N01	AVENUE M	25TH STREET	27TH STREET	CITY	FP	630.95	2	1261.90	7
N01	WILKINS AVENUE	25TH STREET	29TH STREET	CITY	FP	546.42	2	1082.83	8
N01	WILKINS AVENUE	25TH STREET	29TH STREET	CITY	FP	60.66	2	121.322	10
N01	WILKINS AVENUE	25TH STREET	27TH STREET	CITY	FP	546.6	2	1093.20	8
N01	WILKINS AVENUE	25TH STREET	29TH STREET	CITY	FP	57.39	2	114.783	10

Updated interactive map with ability to select a street by “point and click” and retrieve conditions and photos.