



St. Lucie County

2016 State Legislative Program



St. Lucie County Board of County Commissioners



CHRIS DZADOVSKI
DISTRICT 1
(772) 462-1100
dzadovskic@stlucieco.org



TOD MOWERY
DISTRICT 2
(772) 462-1100
moweryt@stlucieco.org



PAULA LEWIS
CHAIR
DISTRICT 3
(772) 462-1100
lewisp@stlucieco.org



FRANNIE HUTCHINSON
DISTRICT 4
(772) 462-1100
hutchinsonf@stlucieco.org



KIM JOHNSON
VICE CHAIR
DISTRICT 5
(772) 462-1100
johnsonk@stlucieco.org

Table of Contents

ECONOMIC DEVELOPMENT	7
<i>LEGISLATIVE PRIORITIES</i>	<i>7</i>
<i>Treasure Coast International Airport Expansion.....</i>	<i>7</i>
<i>Intermodal Logistics Center Design</i>	<i>7</i>
<i>Fisherman’s Wharf Design/Acquisition.....</i>	<i>8</i>
<i>Treasure Coast Research Park/Sunshine Kitchen</i>	<i>9</i>
<i>Northwest Corridor Neighborhood Revitalization Plan.....</i>	<i>9</i>
<i>SUPPORT ISSUES</i>	<i>9</i>
<i>Torrey Pines and Biomedical Research Funding</i>	<i>9</i>
<i>Navy Seal Museum</i>	<i>10</i>
BUDGET & TAXATION POLICY	11
<i>LEGISLATIVE PRIORITIES</i>	<i>11</i>
<i>Unfunded Mandates/Medicaid Cost Shifts</i>	<i>11</i>
ENVIRONMENTAL/NATURAL RESOURCES	13
<i>LEGISLATIVE PRIORITIES</i>	<i>13</i>
<i>Paradise Park Stormwater Improvements Phase 5A \$250,000</i>	<i>13</i>
<i>Culvert Replacement Project \$900,000</i>	<i>13</i>
<i>IRL North Hutchinson Island Sewer Project \$4,750,000</i>	<i>13</i>
<i>North County US1 Water Extension \$1,875,000.....</i>	<i>13</i>
<i>St. Lucie River Issues Team</i>	<i>13</i>
<i>Beach and Inlet Management Project Appropriations: \$1,797,188</i>	<i>14</i>
<i>Florida Recreation Development Assistance Program</i>	<i>14</i>
<i>SUPPORT ISSUES</i>	<i>15</i>
<i>Everglades Restoration and Florida Forever: \$100 million for Everglades Restoration and Support funding for Florida Forever.....</i>	<i>15</i>
<i>Department of Environmental Protection – Beach Funding & Permitting</i>	<i>15</i>
<i>Hydraulic Fracturing.....</i>	<i>15</i>
TRANSPORTATION & INFRASTRUCTURE	17
<i>LEGISLATIVE PRIORITIES</i>	<i>17</i>
<i>Regional Transit Administration/Maintenance Facility.....</i>	<i>17</i>
<i>SUPPORT ISSUES</i>	<i>17</i>
<i>Florida Seaport Transportation and Economic Development.....</i>	<i>17</i>
<i>Growth Management and Infrastructure</i>	<i>17</i>
<i>Utility Relocation Costs.....</i>	<i>17</i>
<i>Strategic Intermodal Systems (SIS).....</i>	<i>18</i>
PUBLIC SAFETY	19
<i>LEGISLATIVE PRIORITIES</i>	<i>19</i>
<i>Adjustment to the State/County Shared Detention Center Cost Split</i>	<i>19</i>
<i>Inmate Medical Costs</i>	<i>19</i>
<i>Pre-Trial Release</i>	<i>19</i>
<i>SUPPORT ISSUES</i>	<i>19</i>
<i>Funding for Enhanced Lighting in High Crime Areas</i>	<i>19</i>
<i>Florida SERT (State Emergency Response Team)</i>	<i>19</i>

HEALTH & HUMAN SERVICES AND HEALTHCARE	21
<i>LEGISLATIVE PRIORITIES</i>	<i>19</i>
<i>Serg. Artie R. Copas Veterans Nursing Home.....</i>	<i>21</i>
<i>SUPPORT ISSUES</i>	<i>21</i>
<i>County Health Departments.....</i>	<i>21</i>
<i>Homelessness</i>	<i>21</i>
<i>Transportation Disadvantaged Programs.....</i>	<i>21</i>
<i>Healthy Families</i>	<i>21</i>
<i>Affordable Housing</i>	<i>21</i>
<i>Early Steps Program</i>	<i>22</i>
<i>KidCare/Medicaid Eligibility</i>	<i>22</i>
<i>Community Healthcare Clinics/HANDS.....</i>	<i>22</i>
<i>Mental Health/Substance Abuse Services.....</i>	<i>22</i>
EDUCATION	23
<i>SUPPORT ISSUES</i>	<i>23</i>
<i>State Library Funding</i>	<i>23</i>
<i>Indian River State College</i>	<i>23</i>
AGRICULTURE.....	25
<i>SUPPORT ISSUES</i>	<i>25</i>
<i>Treasure Coast Food Bank Food Production Facility.....</i>	<i>25</i>
<i>Invasive Exotic Plant Research UF IFAS.....</i>	<i>25</i>
SUPPORTING BUDGET DOCUMENTS.....	27

ECONOMIC DEVELOPMENT

LEGISLATIVE PRIORITIES

Treasure Coast International Airport Expansion \$5,300,000

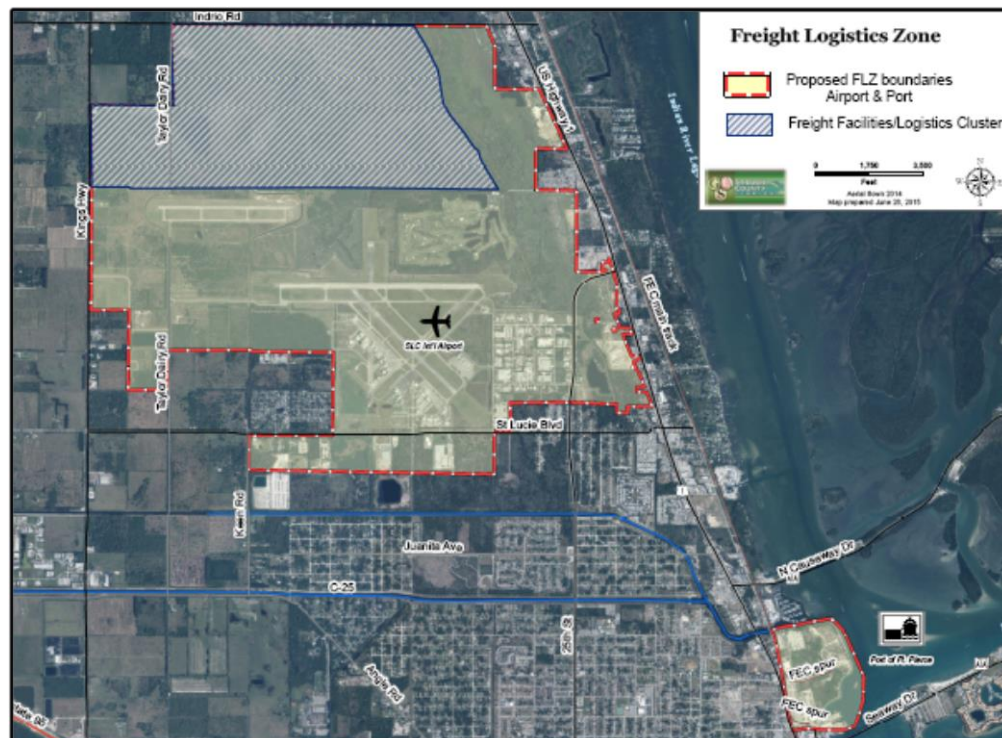
In an effort to provide economic growth and stimulus to the Treasure Coast region the County is proposing the construction of a 30,000 square foot MRO Hangar, total cost of project is \$10.6 million, the County is requesting from the State, \$5.3 million.

The economic impact of during construction of the new hangar is anticipated to total \$6.85 million, sustaining 55 jobs. Once the hangar is completed and the construction impacts have ended, one or more MROs would occupy the facility, creating and sustaining operational jobs and economic output. Jobs created by MROs are typically high paying, with an average wage of \$53,700. The commercial activities at the MRO facility are anticipated to sustain a total of 75 jobs (including induced job creation), with an annual payroll averaging \$4.13 million and a yearly economic output averaging \$14.5 million.

Currently, the Treasure Coast International Airport is at capacity and has established a wait list for future MRO tenants. With the addition of another MRO Hangar we will be able to house the structure immediately upon completion.

Intermodal Logistics Center Design \$500,000

In August 2015, St. Lucie County with the help of the Florida Department of Transportation and Department of Economic Opportunity has established the following area as a Freight Logistics Zone. Furthermore, the County has set aside 1,200 acres within that zone as an Intermodal Logistics Center, by doing so this area has been slated for future industrial use. The County is requesting \$500,000 from the State to begin the design process for this area.



Fisherman's Wharf

Recently, the City of Fort Pierce and St. Lucie County have agreed to enter into an interlocal agreement to collaborate efforts in the development of Fisherman's Wharf. This also includes partnerships with the Florida Department of Transportation and the Florida Department of Economic Opportunity.

Land Acquisition

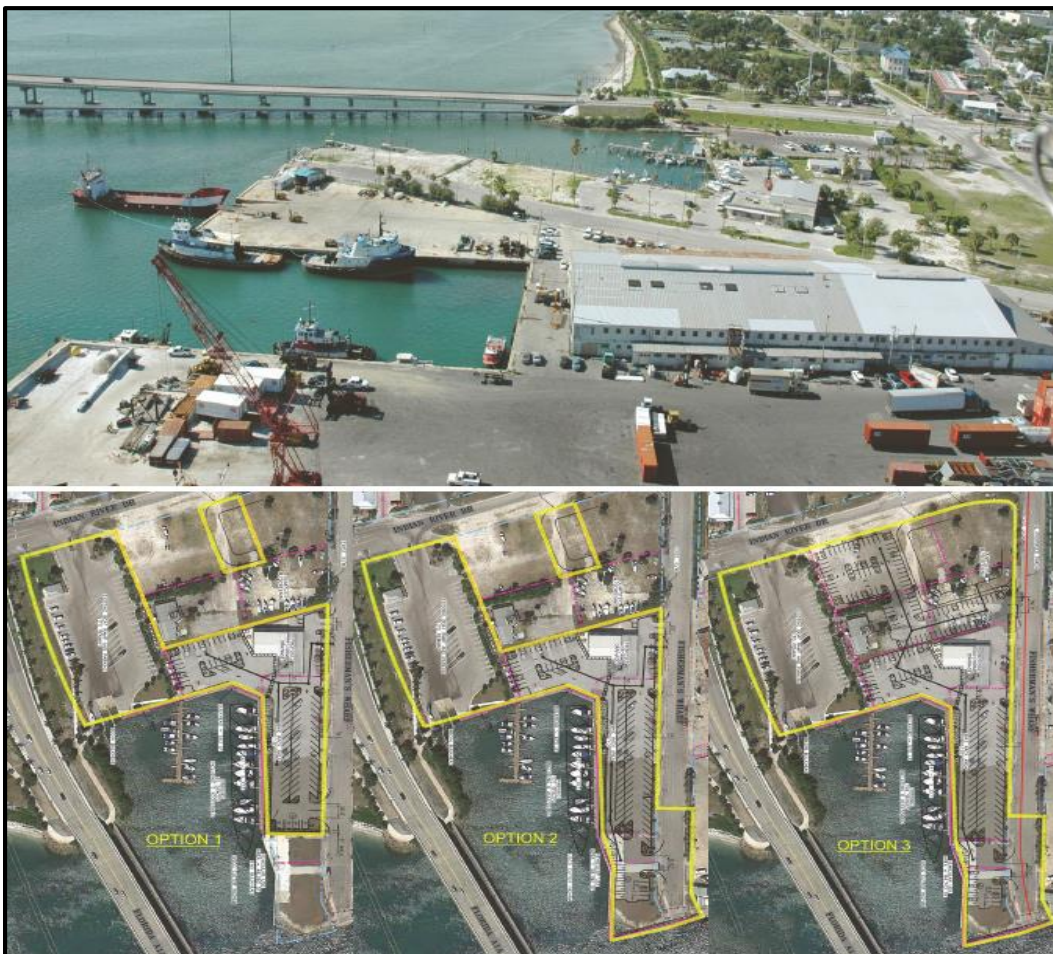
\$255,000

St. Lucie County has applied for a Florida Seaport Transportation and Economic Development (FSTED) grant in the amount of \$255,000, for land acquisition within the operating area of the Port of Fort Pierce known as Fisherman's Wharf. Currently, the site is comprised of multiple underutilized parcels River Marina Incorporated of which the county is proposing the acquisition of the two properties belonging to River Marina and the easternmost 250 feet of Fisherman's Wharf Road.

Bulkhead Design

\$125,000

St. Lucie County has applied for a Florida Seaport Transportation and Economic Development (FSTED) grant in the amount of \$125,000, bulkhead design at Fisherman's Wharf. The County is proposing to re-establish the bulkhead's structural integrity. In its present condition, the bulkheads are in poor condition, deteriorated and require reconstruction as part of the design. Additionally, the berth would be dredged to 20 feet minimum depth.



Treasure Coast Research Park/Sunshine Kitchen **\$2,000,000**

This Food Business Incubator, to be built on County-owned property, would include a professionally equipped commercial kitchen and research lab designed to aid entrepreneurs in the development of commercially viable food ventures. It would serve as a working laboratory for food entrepreneurs to develop a product, process, market or package, and to promote the product. The Incubator would connect the entrepreneur with professional business consultative services to assist in developing a business plan for the venture in order to ensure a sustainable operation.

The EDA has approved an award of \$895,000 toward the project, and set the County's match amount for this grant at \$896,735. The remaining \$103,265 of the County's \$1 million commitment would be set aside to be used toward additional construction or startup costs for the Sunshine Kitchen. The County and TCERDA will be submitting the same request of \$1 million for funding from the Florida Legislature this year.

Northwest Corridor Neighborhood Revitalization Plan **\$200,000**

The overall objective of this project is to create a community and economic revitalization plan by utilizing and coordinating existing community wide services and identifying opportunities to promote economic development. This will enable the County to apply for the funding needed to create a positive impact for its residents. Funding would be utilized to employ a project coordinator over the course of at least a two-year period to create a phased community and economic revitalization plan. Once the plan has been completed, funding would be sought for the implementation of the plan.

St. Lucie County anticipates that the creation of the revitalization plan will generate opportunities to apply for various sources of funding needed to implement the plan such as the Community Development Block Grant Small Cities Program administered by the Florida Department of Economic Opportunity (DEO). The County has not been able to previously apply for funding due to not having the monetary resources needed to research and create a plan.

The plan will compliment other initiatives being implemented in the County such as the National Gang Model, Bridges out of Poverty, and Restoring the Village.

SUPPORT ISSUES**Navy Seal Museum**

The National Navy UDT-SEAL Museum & Memorial is a major tourism and education destination in Florida. Located on the Treasure Coast at the beach birthplace of UDT-SEALs, it is the only site worldwide where SEAL history and operations enlighten the public. Situated in St. Lucie County at Pepper Park, the current 4 acres and 13,500 sq. ft. of buildings have reached maximum capacity for exhibits, and special events to honor our active duty military and veterans. Installation of 13 new interactive exhibits, currently under construction, will raise annual attendance to more than 100,000.

Support any future funding requests by the Navy Seal Museum for a new facility to display artifacts in storage, accommodate items it receives daily, continue to show the SEAL evolving history and accommodate the number of tourists and students.

Torrey Pines and Biomedical Research Funding

Current statute allows for a percentage of cigarette tax revenues to be deposited into the Alcoholic Beverage and Tobacco Trust Fund. One percent of those tax revenues is then placed into the Biomedical Research Trust Fund in the Department of Health for the purpose of establishing activities and grant opportunities in relation to biomedical research. Those funds have been solely appropriated to Sanford-Burnham Medical Research Institute.

Support an increase in the percentage of cigarette tax net collections that will be deposited into the Biomedical Research Trust Fund or a direct appropriation of \$3 million per year, to enhance biotechnology research within the state. Efforts should be made to continue to enhance the Trust Fund to allow other research institutes to compete for funding, such as Torrey Pines and other local biomedical research facilities.

BUDGET & TAXATION POLICY

LEGISLATIVE PRIORITIES

Unfunded Mandates/Medicaid Cost Shifts

The State Legislature has frequently passed legislation that compels local governments to provide a service, program, or benefit without providing the appropriate funding or a funding source. This compromises local governments' ability to provide services requested by their local communities by diverting resources to these state-directed, unfunded mandates or cost shifts. In addition, as more and more mandates are created, local governments are faced with the burden of using local tax dollars to finance functions that they have little control over.

The state must do a better job of truthfully identifying costs to local governments when passing new legislation and must provide funding or a funding source for every legislative initiative that imposes a cost on counties. St. Lucie County **opposes** new unfunded mandates and unfunded state to county cost shifts.

ENVIRONMENTAL/NATURAL RESOURCES

LEGISLATIVE PRIORITIES

2016 St. Lucie County Water Projects

Project	Project Description	Requested Amount	County Match
Paradise Park Stormwater	CONSTRUCTION, The overall objective of this project is to construct 10 dry detention ponds and 2 drainage outfalls within the 175.6 acre subdivision	\$250,000	\$250,000
Culvert Replacement Project	CONSTRUCTION, The overall objective of this project is to replace three culverts which are old and in need of full replacement. This work is consistent with the SFWMD Strategic Priority.	\$900,000	\$900,000
Indian River Lagoon North Hutchinson Island Nutrient Pollution Reduction Project	CONSTRUCTION, The overall objective is to protect the health of the Indian River Lagoon by removing 578 current and future onsite treatment and disposal systems, including 340 directly on the IRL, on Hutchinson Island.	\$4,750,000	\$1,000,000
North County US1 Water Main Extension	CONSTRUCTION, The overall objective of the project will be to extend a 12-inch potable water main through this important area providing opportunities for economic growth and job creation in St. Lucie County as well as reducing the demand on a fragile ground water resource.	\$1,875,000	\$350,000
Teague Hammock Preserve	CONSTRUCTION, This project is an IRL-S C23/C24 CERP buffer project that will provide an additional 300-acres of groundwater recharge that will reclaim agriculture water discharge, restore priority wetland habitat for threatened and endangered species, and reduce State and local invasive exotic management costs. This project will directly benefit the future adjacent IRL-S C23/C24 CERP reservoir project by reclaiming and holding agriculture water before it reaches the C24 drainage basin.	\$400,000	\$1,000,000

St. Lucie River Issues Team

The St. Lucie River Issue Team (SLRIT) was formed by the South Florida Ecosystem Restoration Task Force to document the existing condition of the SLE, describe the impacts of the discharge event, and develop an interim action plan with specific short term projects that could be implemented within five years to improve water quality in the SLE. The team is made up of a variety of federal, state and local governments in addition to agricultural and environmental interests.

For more than a decade, the SLRIT has solicited, ranked and submitted to the Florida Legislature local turn-dirt projects focused on the restoration of the SLE and the Indian River Lagoon (IRL). The County fully **supports** the funding of all ranked projects by the St. Lucie River Issues Team.

Beach and Inlet Management Projects

The Beach Management Funding Assistance Program is a Long-Range Budget Plan administered through the Florida Department of Environmental Protection (FDEP) to assist eligible local governments with their beach erosion control projects. Each application request must include a detailed project description, cost estimate, and supporting resolution from the governing body. Individual projects then receive a priority ranking based upon several criteria.

Project	Project Description	Requested Amount	County Match
Fort Pierce Shore Protection Project	2017 physical and biological monitoring	\$135,000.00	\$135,000.00
	Next planned Federal nourishment in 2016/2017	\$910,000.00	\$910,000.00
Fort Pierce Inlet Management	Supplemental permitting activities for sand trap	\$75,000.00	\$25,000.00
	Bid documents and coordination for sand trap	\$150,000.00	\$50,000.00
	Sediment budget update	\$225,000.00	\$75,000.00
	Tracer study to evaluate sediment pathways	\$225,000.00	\$75,000.00
Southern St. Lucie County Beach Restoration	2017 physical and biological monitoring	\$52,188.00	\$67,812.00
	Coordination of Federal feasibility study	\$25,000.00	\$25,000.00
TOTAL		\$1,797,188.00	\$1,362,812.00

Florida Recreation Development Assistance Program

Within the Department of Environmental Protection, the Division of Recreation and Parks administers the Florida Recreation Development Assistance Program. This program is a competitive grant program that provides financial assistance through grants to local governments for the acquisition and development of land for public outdoor recreation purposes. The maximum grant amount per development is \$200,000.

The County recommends **restoring** FRDAP funding to levels that at least funds the top twenty projects in The Large Project Development list.

St. Lucie County ERD has submitted two FRDAP applications for the coming year:

- 1. Lincoln Park Regional Park-Ilois Ellis Park** **\$50,000**
 The proposed project includes playground resurfacing renovations, along with landscape revitalization and construction of a new picnic table to be placed in the playground. The improvements will be physically and visually integrated with the existing amenities.
- 2. Petravice Park** **\$200,000**
 These funds will be used to construct or renovate more than a mile of hiking trails, a pedestrian bridge, two picnic pavilions, a compost toilet, canoe launch and canoe stop-over docks, lawn-game areas and fishing pier.

SUPPORT ISSUES

Everglades Restoration and Florida Forever

Issue 1: Support \$100 Million in Everglades Restoration Funding

The County strongly **supports** the State \$100 million as part of Everglades Restoration, particularly those that are ready for work to commence and located in the Treasure Coast. The County also supports the State's efforts to persuade the Federal government to allocate additional funds for Everglades Restoration.

Issue 2: Continued and Additional Florida Forever Funding

The Florida Forever Program, which replaced the Preservation 2000 Conservation Lands Acquisition Program, is the blueprint for conservation of the State's natural resources. The Florida Forever program has not been consistently funded by the Legislature over the past few years, which has setback both state and local government efforts to preserve the natural resources and environmentally sensitive lands within the state. To continue with the goals set forth by the Florida Forever Act, consistent funding of the program is essential.

Issue 3: Funding for Land Management

The Florida Forever Program focuses solely on funding for the acquisition of conservation lands, but once lands have been acquired and the opportunity for acquisition decreases, agencies must turn their attention to management of the acquired lands. The County would like to see an additional category of funding that focuses on the management of these State-owned conservation lands that are managed by local governments, either a flat fee or a percentage of the management costs. In order for agencies to continue to protect environmentally significant lands, protect ground and surface water, provide recreational activities, and implement local comprehensive plans, funding sources must be provided to assist in the management of these lands.

Department of Environmental Protection – Beach Funding & Permitting

Support appropriations for the Statewide beach management program so that the economic benefit of beach tourism continues uninterrupted. All beach projects provide far greater benefits to Florida's economy than cost to taxpayers. The Office of Economic and Demographic Research's recent report, "Economic Evaluation of Florida's Investment in Beaches," demonstrated that the state's investment in the beach program generated a positive return on investment of 5.4, not including in-state tourism. During the three-year study period included in the report, the state invested \$44M in the beach program, resulting in an average increase in the GDP of \$2.4B per year. This increased the overall collection of state revenues by \$237.9M over three years. The report concluded that "beaches are the most important feature of Florida's brand and have the strongest effect of attracting tourists" and stated that it is necessary to "maintain a certain level of beach quality or else visitors will travel elsewhere."

Hydraulic Fracturing

Hydraulic fracturing is a technique that involves stimulating the well to extract oil and gas. Large amounts of fluid under pressure are injected into a wellbore to create and extend fractures in the rock formation. The fractures are held open by a slurry mixture which allows natural gas to flow from the fractures into the production well.

Oppose any legislation which would pre-empt County regulations when pertaining to the process of hydraulic fracturing.

TRANSPORTATION & INFRASTRUCTURE

LEGISLATIVE PRIORITIES

Regional Transit Administration/Maintenance Facility \$200,000

St. Lucie County has received a FTA 5307 Grant for \$292,363 and will be requesting a match from the State for \$200,000 to create a conceptual design plan for a transit administration and maintenance facility which will serve the three county region. The facility is slated for Selvitz Road, just north of Midway Road and will be used to store and maintain the fixed route, para-transit buses and support vehicles, as well as house staff and operational supports required for the success of the system.

Currently, transit operations, fixed route and paratransit buses are housed at three different locations, each with its associated maintenance and operating costs. Vehicle maintenance and service are outsourced. The proposed appropriation will assist in completion of the next step toward construction of the facility, allowing for internal maintenance and service work, storage, security and a centralized operational site.

SUPPORT ISSUES

Florida Seaport Transportation & Economic Development (FSTED)

The Florida Legislature created this on-port investment program in 1990, which is administered by the FSTED Council, consisting of the port directors of the 15 public seaports, the Secretary of the Department of Transportation, and the Director of the Department of Economic Opportunity. This state and local investment entity is statutorily charged with accomplishing the state's seaport development mission of implementing capital improvement projects at the local level, currently funded at a minimum of \$15 million, as provided in Chapter 311, F.S.

St. Lucie County **supports** an increase to the statutory minimum from \$15 million to \$25 million as this will have no fiscal impact to the current FDOT Work Program.

Growth Management & Infrastructure

Growth management laws should take careful consideration of and protect the distinct home rule authority of local governments. **Support** changes that 1) strengthen the intergovernmental review process, 2) ensure that the development impacts occurring outside the approving jurisdiction are adequately mitigated, 3) eliminate unnecessary duplication and expenses, and 4) **Support** full funding of regional planning councils and **Oppose** legislation prohibiting or restricting the ability of a regional planning council to provide planning and technical service to its local governments. Efforts to strengthen intergovernmental coordination should be considered so that land use decisions of one jurisdiction do not negatively impact another.

Utility Relocation Costs

Florida counties own and maintain thousands of miles or rights-of-way throughout the state. While local roads provide multiple functions, their primary purpose is to provide its residents a safe and convenient mode of travel. Under current law, a county is authorized to grant a license to a private corporation to construct, maintain, repair, operate, and remove utility lines under, on, over, across and along any county road.

Current law also requires a utility provider to relocate its equipment from the county right-of-way, at no cost to the county, if the equipment is found to be interfering in any way with the convenient, safe, or

continuous use, or the maintenance, improvement, extension, or expansion, of such public road. St. Lucie County **opposes** any legislation which would shift the financial responsibility of relocating private utilities within county rights-of-way from the utility companies to the County.

Strategic Intermodal System (SIS)

Support legislation allowing SIS funds to be used on roads and other transportation facilities not designated on the SIS network if the improvement relieves congestion on the SIS.

PUBLIC SAFETY

LEGISLATIVE PRIORITIES

Adjustment to the State/County Shared Detention Center Cost Split

Florida Statute Section 985.686 requires counties to contribute funds to the state to cover the cost of youth detained in secure detention for those stays when a youth is awaiting disposition of charges or "predisposition" days. The current utilization rate split is 76% County funds and 24% state funds.

St. Lucie County **supports** legislation that codifies the financial responsibility of juvenile secure decision as upheld by Florida's courts.

Inmate Medical Costs

Support legislation that reduces jail expenses by setting a reimbursement amount paid by counties to medical providers for health care services for inmates and arrestees at no higher than the established Medicare rate plus 10%, the same rate as currently charged to the Department of Corrections, unless there is an existing contract in place or a business practice providing a lower rate.

Pre-Trial Release

In 2012, legislation was filed that would have significantly hampered the ability of local governments to administer their pretrial release programs. According to estimates from the St. Lucie County Criminal Justice Commission, the restrictions that would have been created by this legislation would likely cause defendants each month who are on supervised release to be retained in custody. Current supervised release programs cost \$4 per day, whereas costs to house a defendant in jail are approximately \$123 per day. **Support** maintaining county ability to provide non-monetary pre-trial release services that ensure the safety and welfare of local communities and **oppose** legislation that would limit the discretion of first appearance judges to prescribe pre-trial options for defendants.

SUPPORT ISSUES

Funding for Enhanced Lighting in High Crime Areas

In an effort to continue promoting safety in high crime areas, grant opportunities should be created to enhance lighting in these areas.

Florida SERT (State Emergency Response Team)

Support funding for Florida SERT to ensure adequate preparation and resources when responding to disasters in the State.

HEALTH & HUMAN SERVICES

LEGISLATIVE PRIORITIES

Serg. Ardie R. Copas Veterans Nursing Home

The Florida Department of Veterans' Affairs operates six veterans' nursing homes in Daytona Beach, Land O' Lakes, Pembroke Pines, Panama City, Port Charlotte and St. Augustine and one veterans' assisted living facility in Lake City. St. Lucie County was awarded the site for the seventh state veterans' nursing home following a unanimous vote at the Sept. 23, 2014 Cabinet Meeting.

Support all future funding for the construction and operation of the Sergeant Ardie R. Copas Veterans Nursing Home.

SUPPORT ISSUES

County Health Departments

Support preserving the ability of County Health Departments (CHD) to provide primary care and direct patient care services, particularly in communities without adequate substitutes or alternative providers for these services, maintaining state general revenue funding for County Health Departments, and maintaining a coordinated system of county health departments that is centrally housed within the Department of Health (DOH).

Oppose efforts to decentralize the public health system by transferring authority over CHDs from the DOH to the respective county governments, any state reductions to the County Health Department Trust Funds; and any efforts, legislative or otherwise, to limit or eliminate the provision of primary care services in CHDs.

Homelessness

Support developing a dedicated state funding source for homeless programs. **Support** legislation that streamlines current state statutes relating to homelessness and associated programs. **Support** the implementation of discharge protocols and/or procedures for hospitals and correctional facilities when releasing homeless persons. **Support** the development of strategies that would allow local governments to work with the state and federal government to serve target populations: the chronically homeless, veterans, and families and children, with particular emphasis on children aging out of the foster care system.

Transportation Disadvantaged Programs

Transportation Disadvantages (TD) funding is an important funding source to provide the most economically challenged customers with discounted rides on both our fixed route and CONNECTION services. St. Lucie County **supports** attempts to maintain funding to the TD program and to prevent diversion of these dollars for other purposes.

Healthy Families

Support a continuation of funding for the Florida Healthy Families program.

Affordable Housing

St. Lucie County **supports** efforts to ensure that funds within the Sadowski Housing Trust Fund are fully appropriated for affordable housing projects.

Early Steps Program

Treasure Coast Early Steps Program, within Children's Medical Services, serves families with infants and toddlers, birth to 36 months of age, who have developmental delays or an established condition likely to result in a developmental delay. Each child receives an Individualized Family Support Plan (IFSP) that meets his or her needs. Families and caregivers also receive support to develop the skills and confidence they need to help their children learn and develop. The County **supports** continued funding of the program

Kidcare/Medicaid Eligibility

The County **supports** legislation to extend the Kidcare Program eligibility or Medicaid eligibility to all lawfully residing children.

Community Healthcare Clinics/HANDS

The County strongly **supports** the continuation or increase of funding for all Community Healthcare Clinics, such as the HANDS Clinic in Fort Pierce.

Mental Health/Substance Abuse Services

The County supports increased state funding for public mental health and substance abuse services. Florida sits at 49th out of 50 states in mental health services funding, according to fiscal year 2013 figures from the Kaiser Family Foundation, which includes addiction treatment funding. The U.S. average for per capita spending in millions on mental health services is \$129.99, and Florida's per capita spending is \$37.28, only higher than Idaho.

EDUCATION

SUPPORT ISSUES

State Library Funding

Local governments receive State support for libraries through three different programs: the State Aid program, the Regional Multi-type Library Cooperative Grant program, and the Public Library Construction Grant program. Continuation of these funding sources will ensure that the State will play an appropriate role in enhancing public library service by matching local library expenditures, enhancing consortia services to area libraries, and providing needed dollars for the construction of new public libraries.

Indian River State College

Support Indian River State College (IRSC) with increased operational funding for workforce-related initiatives and enhancing the institutions capacity to serve the community; additionally, support revisions to the Florida College System Performance funding methodology which would more equitably evaluate its collective institutions and promote even greater success in the nation's best state and community college system.

Support IRSC's ability to serve the region with upper-division, baccalaureate programs that meet the current and future workforce needs of our communities. Conversely, **oppose** legislative measures which may potentially incapacitate growth in existing programs, or severely limit the institution's ability to implement new programs if a workforce need is demonstrated.

Support any IRSC College Improvement Plan (CIP) building construction projects that come forward for funding on the state's Public Education Capital Outlay (PECO) prioritized list.

AGRICULTURE

SUPPORT ISSUES

Treasure Coast Food Bank Food Production Facility \$750,000

The Treasure Coast Food Bank (TCFB) will refurbish their own facility to house equipment such as freezers, coolers, rolling tables, washers, and several necessary commercial kitchen items. TCFB will fully utilize the new, fully-equipped Food Production Facility which will process, prepare, value-add, flash-freeze, and cryovac 25 million pounds of healthy produce (in just the first year) for area schools and TCFB's 200 partner agencies. St. Lucie County **supports** the Treasure Coast Food Bank in their legislative request this year.

It should also be noted that there are currently no so-called "chop houses" or food production centers working specifically for the purpose of providing millions of pounds of healthy, nutritious fruits and vegetables to Florida schools. TCFB's Food Production Facility will actually be the first "chop house" operation in Florida that will safely and effectively provide local schools each year with millions of pounds of processed, prepared, value-added, cryovaced, fruits and vegetables.

Invasive Exotic Plant Research UF IFAS

The UF/IFAS quarantine facility, which opened in 2004 at the Treasure Coast Research Park, is a highly secure lab where scientists conduct research on biological controls for invasive species. Biological control uses natural enemies to control plant and insect pests. Scientists introduce, evaluate and release biological control agents to try to manage exotic weeds and insect pests in Florida.

UF/IFAS scientists at the quarantine facility are working on many projects, including:

- Trying to establish laboratory colonies of one or more promising insect herbivores that feed on cogongrass, one of the most invasive grasses in the Southeast.
- In collaboration with the Florida Department of Agriculture and Consumer Services and the U.S. Department of Agriculture, scientists have released more than 350,000 beetles for biological control of the air potato at more than 1,000 locations in Florida since 2012.
- Biological control of Brazilian peppertree using two insects from South America. In greenhouse trials, these insects have been shown to reduce growth of the invasive weed by as much as 89 percent. Release of the insects will begin as soon as federal approval is received.

The County **supports** continued funding which will benefit the *Invasive Exotic Plant Research* located at the University of Florida IFAS in Fort Pierce.

SUPPORTING BUDGET DOCUMENTS



St. Lucie County Legislative Budget Requests (Fiscal Year 2016-2017)



1. Project Title: **Treasure Coast International Airport Expansion**
2. Member Sponsor(s) Name: _____ District No: _____
3. What countywide or statewide interest does this project address?
The economic impact of during construction of the new hangar is anticipated to total \$6.85 million, sustaining 55 jobs. Once the hangar is completed and the construction impacts have ended, one or more MROs would occupy the facility, creating and sustaining operational jobs and economic output. Jobs created by MROs are typically high paying, with an average wage of \$53,700. The commercial activities at the MRO facility are anticipated to sustain a total of 75 total jobs (including induced job creation), with an annual payroll averaging \$4.13 million and a yearly economic output averaging \$14.5 million.
4. Requestor: **John Wiatrak** Department: **Airport**
5. Recipient: **St. Lucie County** Contact: **Nicole Fogarty: cell: (772) 708-3954**
2300 Virginia Ave office: (772) 462-6406
Fort Pierce, FL 3498 email: fogartyn@stlucieco.org
6. Project Description (include services to be provided):
In an effort to provide economic growth and stimulus to the Treasure Coast Region the County is proposing the construction of a 30,000 square feet MRO Hangar, total cost of project is \$10.6 million, the County is requesting from the State, \$5.3 million.
7. Is this a water project? Yes ___ No **X** Unknown ___
8. Is this project related to a federal or state declared disaster? Yes ___ No **X** Unknown ___
9. Measurable Outcome Anticipated: **N/A**
10. Amount requested from the State for this project FY 2016-2017: **\$5,500,000**
11. Total cost of the project: **\$10,600,000**
12. Is this request being made to fund (check all that apply):
Operations ___ Construction **X** ___
13. What type of match exists for this request? Local **X** Private ___ Federal ___
None ___
14. Enter all that apply: Total cash amount: **\$5,100,000** Total in-kind amount
15. Was this project previously funded by the State? Yes ___ No **X** Unknown ___
a. If yes, most recent fiscal year _____ Amount _____
16. Is future funding likely to be requested? Yes ___ No **X** Unknown ___
a. If yes, how much? _____
17. Purpose for future year funding: Recurring Operations Non-recurring Construction Other
18. Will this be an annual request? Yes ___ No **X** Unknown ___
19. Was the project included in an Agency budget request? Yes **X** No ___ Unknown ___
a. If yes, name the Agency: **Florida Department of Transportation 5 year plan for Airport Division**
20. Was this project in the Governor's Recommended Budget? Yes ___ No ___
Unknown **X** ___
21. Is there documented need for this project? Yes **X** No ___ Unknown ___
22. If yes, what is the documentation? (e.g. LRPP, Agency Needs Assessment, etc.) **St. Lucie County Airport Master Plan and Logistics Strategic Plan**
23. Was this project heard before a publicly noticed meeting of a body of elected officials (municipal, county, or state)? Yes **X** No ___ Unknown ___
a. If yes, name the Body: **St. Lucie County Board of County Commissioners and St. Lucie County Legislative Delegation.**

Narrative for MRO Hangar

Florida is the number one location for Manufacturing/Repair/Overhaul (MRO) companies in the United States with 13.0 percent of the MRO establishments in the nation. The next closest is California with 11.6 percent and Texas with 11.3 percent. Thus, the competitive nature of the MRO business favors warm climates. Second, forecasts of industry activity indicate the following as applicable to the Treasure Coast International Airport situation:

- **Mature Industry:** The MRO business has matured to the point that growth comes through consolidation and expansion rather than through new entrants to the market. Some larger companies have expanded from northern locations to Florida, e.g. MidairUSA in Melbourne.
- **Slow Growth:** The trend of slow overall industry growth (1.2 percent increase per year in revenues) points to the need for increasing market share and competitive advantages. This means looking for ways to attract MROs to the Airport through incentives and the development of large hangars.

Third, a recent article in Florida TaxWatch¹ indicated that Florida is now the most attractive state for aircraft manufacturing. ST Aerospace, a Singaporean company that provides services to manufacturers such as Boeing and Airbus, announced the development of a new MRO location in Florida to supply parts to the soon-to-be Airbus facility near Mobile, AL. Embraer recently opened its aircraft manufacturing plant for the Legacy business jet in Melbourne.

Economic benefits to the Treasure Coast region of a new MRO company at Treasure Coast International Airport are significant. Both jobs and economic output in the form of income and local spending will be supported by the new infrastructure. In this regard, the proposed \$4 million MRO hangar has roughly 30,000 square feet, which equates to a utilization rate of between 30 and 60 employees (for this analysis 45 employees are assumed).

The economic impact of during construction of the new hangar is anticipated to total \$6.85 million, sustaining 55 jobs. Once the hangar is completed and the construction impacts have ended, one or more MROs would occupy the facility, creating and sustaining operational jobs and economic output. Jobs created by MROs are typically high paying, with an average wage of \$53,700.² The commercial activities at the MRO facility are anticipated to sustain a total of 75 total jobs (including induced job creation), with an annual payroll averaging \$4.13 million and a yearly economic output averaging \$14.5 million.

¹ "Ready for Takeoff: Florida Can Lead the Nation in Aircraft Manufacturing", Florida TaxWatch, July, 2014. (floridatxwatch.org).

² Source: IBISWorld Industry Report 48819, "Aircraft Maintenance, Repair & Overhaul in the US". February 2013.

In addition to the economic benefits which are created by the construction of the hangar and the operation of an MRO thereafter, the County benefits from lease revenues produced by the hangar. In this regard, the County, as landlord, would be able to charge market rates for the new hangar, helping to reduce operating subsidies for the Airport. Assuming a lease rate of between \$3.60 and \$5.10 per square foot, revenues from lease payments could range between \$108,000 and \$153,000 per year.



ST. LUCIE COUNTY INTERNATIONAL AIRPORT							
CONCEPTUAL PLANNING ESTIMATE							
30,000 SF PRE-ENGINEERED METAL BUILDING MRO HANGAR AND RELATED WORK							
	ESTIMATED TOTAL	CONTINGENCY (15%)	EXTENDED TOTAL	ENGINEERING DESIGN AND BIDDING (8%)	ENGINEERING CONST. PHASE SERVICES (2%)	CONST. RPR AND TESTING SERVICES (10%)	GRAND TOTAL
BASE BID - 30,000 SQ. FT. HANGAR	\$ 4,655,000.00	\$ 698,250.00	\$ 5,353,250.00	\$ 428,260.00	\$ 107,065.00	\$ 535,325.00	
BID ADDITIVE ALTERNATE 1 - 90,000 SQ. FT. APRON WITH T/W CONNECTOR	\$ 1,944,000.00	\$ 291,600.00	\$ 2,235,600.00	\$ 178,848.00	\$ 44,712.00	\$ 223,560.00	
BID ADDITIVE ALTERNATE 2 - SITE WORK (EST. 6.5 ACRES)	\$ 1,081,500.00	\$ 162,225.00	\$ 1,243,725.00	\$ 99,498.00	\$ 24,874.50	\$ 124,372.50	
TOTAL	\$ 7,680,500.00	\$ 1,152,075.00	\$ 8,832,575.00	\$ 706,606.00	\$ 176,651.50	\$ 883,257.50	\$ 10,599,090.00
						GRAND TOTAL ROUNDED	\$ 10,600,000.00



St. Lucie County Legislative Budget Requests (Fiscal Year 2016-2017)



1. Project Title: **Intermodal Logistics Center Design**
2. Member Sponsor(s) Name: _____ District No: _____
3. What countywide or statewide interest does this project address?
Intermodal logistics centers can play a significant role in expanding our trade and logistics infrastructure by enhancing our seaports, airports, railroads, and supporting intermodal highway connectors. Florida recognized the importance of ILCs in 2012 when legislation was enacted to support ILC development through a new ILC grant program, as well as inclusion of ILCs as part of the state's Strategic Intermodal System.
4. Requestor: **Leslie Olsen, Director** Department: **Planning & Development**
5. Recipient: **St. Lucie County** Contact: **Nicole Fogarty: cell: (772) 708-3954**
2300 Virginia Ave office: (772) 462-6406
Fort Pierce, FL 34982 email: fogartyn@stlucieco.org
6. Project Description (include services to be provided):
In August 2015, St. Lucie County with the help of the Florida Department of Transportation and Department of Economic Opportunity has established the following area as a Freight Logistics Zone. Furthermore, the County has set aside 1,200 acres within that zone as an Intermodal Logistics Center, by doing so this area has been slated for future industrial use.
7. Is this a water project? Yes ___ No **X** Unknown ___
8. Is this project related to a federal or state declared disaster? Yes ___ No **X** Unknown ___
9. Measurable Outcome Anticipated: **N/A**
10. Amount requested from the State for this project FY 2016-2017: **\$500,000**
11. Total cost of the project: **\$500,000**
12. Is this request being made to fund (check all that apply):
Design **X** Operations ___ Construction ___
13. What type of match exists for this request? Local **X** Private ___ Federal ___ None ___
14. Enter all that apply: Total cash amount: **50/50** Total in-kind amount _____
15. Was this project previously funded by the State? Yes ___ No **X** Unknown ___
a. If yes, most recent fiscal year _____ Amount _____
16. Is future funding likely to be requested? Yes ___ No **X** Unknown ___
a. If yes, how much? _____
17. Purpose for future year funding: Recurring Operations Non-recurring Construction Other
18. Will this be an annual request? Yes ___ No **X** Unknown ___
19. Was the project included in an Agency budget request? Yes **X** No ___ Unknown ___
a. If yes, name the Agency: **Florida Department of Transportation District 4**
20. Was this project in the Governor's Recommended Budget? Yes ___ No ___ Unknown **X**
21. Is there documented need for this project? Yes **X** No ___ Unknown ___
22. If yes, what is the documentation? (e.g. LRPP, Agency Needs Assessment, etc.) **St. Lucie County Airport Master Plan and Logistics Strategic Plan**
23. Was this project heard before a publicly noticed meeting of a body of elected officials (municipal, county, or state)? Yes **X** No ___ Unknown ___
a. If yes, name the Body: **St. Lucie County Board of County Commissioners and St. Lucie County Legislative Delegation.**



St. Lucie County Legislative Budget Requests (Fiscal Year 2016-2017)



1. Project Title: **Fisherman's Wharf Land Acquisition**
2. Member Sponsor(s) Name: _____ District No: _____
3. What countywide or statewide interest does this project address?
To promote Florida's seaports which bring high-paying jobs and economic benefits to the communities while moving goods around the globe efficiently and seamlessly.
4. Requestor: **Don West, Director** Department: **Public Works**
5. Recipient: **St. Lucie County** Contact: **Nicole Fogarty: cell: (772) 708-3954**
2300 Virginia Ave office: **(772) 462-6406**
Fort Pierce, FL 34982 email: **fogartyn@stlucieco.org**
6. Project Description (include services to be provided):
St. Lucie County has applied for a Florida Seaport Transportation and Economic Development (FSTED) grant in the amount of \$255,000, for land acquisition within the operating area of the Port of Fort Pierce known as Fisherman's Wharf. Currently, the site is comprised of multiple underutilized parcels River Marina Incorporated of which the county is proposing the acquisition of the two properties belonging to River Marina and the easternmost 250 feet of Fisherman's Wharf Road.
7. Is this a water project? Yes___ No **X** Unknown___
8. Is this project related to a federal or state declared disaster? Yes___ No **X** Unknown___
9. Measurable Outcome Anticipated: **N/A**
10. Amount requested from the State for this project FY 2016-2017: **\$255,000**
11. Total cost of the project: **\$510,000**
12. Is this request being made to fund (check all that apply):
Design___ Operations___ Construction___
13. What type of match exists for this request? Local **X** Private___ Federal___
None___
14. Enter all that apply: Total cash amount: **\$255,000** Total in-kind amount
15. Was this project previously funded by the State? Yes___ No **X** Unknown___
a. If yes, most recent fiscal year _____ Amount _____
16. Is future funding likely to be requested? Yes___ No **X** Unknown___
a. If yes, how much? _____
17. Purpose for future year funding: Recurring Operations _____ Non-recurring Construction _____
Other _____
18. Will this be an annual request? Yes___ No **X** Unknown___
19. Was the project included in an Agency budget request? Yes **X** No___ Unknown___
a. If yes, name the Agency: **Florida Department of Transportation**
20. Was this project in the Governor's Recommended Budget? Yes___ No___ Unknown **X**___
21. Is there documented need for this project? Yes___ No___ Unknown **X**___
22. If yes, what is the documentation? (e.g. LRPP, Agency Needs Assessment, etc.)
23. Was this project heard before a publicly noticed meeting of a body of elected officials (municipal, county, or state)? Yes **X** No___ Unknown___
a. If yes, name the Body: **St. Lucie County Board of County Commissioners and St. Lucie County Legislative Delegation.**



St. Lucie County Legislative Budget Requests (Fiscal Year 2016-2017)



1. Project Title: **Fisherman’s Wharf Bulkhead Design**
2. Member Sponsor(s) Name: _____ District No: _____
3. What countywide or statewide interest does this project address?
To promote Florida's seaports which bring high-paying jobs and economic benefits to the communities while moving goods around the globe efficiently and seamlessly.
4. Requestor: **Don West, Director** Department: **Public Works**
5. Recipient: **St. Lucie County** Contact: **Nicole Fogarty: cell: (772) 708-3954**
2300 Virginia Ave office: (772) 462-6406
Fort Pierce, FL 34982 email: fogartyn@stlucieco.org
6. Project Description (include services to be provided):
St. Lucie County has applied for a Florida Seaport Transportation and Economic Development (FSTED) grant in the amount of \$125,000, bulkhead design at Fisherman’s Wharf. The County is proposing to re-establish the bulkhead’s structural integrity. In its present condition, the bulkheads are in poor condition, deteriorated and require reconstruction as part of the design. Additionally, the berth would be dredged to 20 feet minimum depth.
7. Is this a water project? Yes___No_**X**___Unknown_____
8. Is this project related to a federal or state declared disaster? Yes___No_**X**___ Unknown_____
9. Measurable Outcome Anticipated: **N/A**
10. Amount requested from the State for this project FY 2016-2017: **\$125,000**
11. Total cost of the project: **\$250,000**
12. Is this request being made to fund (check all that apply):
Design___Operations___Construction_____
13. What type of match exists for this request? Local_**X**___Private_____ Federal_____ None_____
14. Enter all that apply: Total cash amount: **\$125,000** Total in-kind amount _____
15. Was this project previously funded by the State? Yes___ No_**X**___ Unknown_____
a. If yes, most recent fiscal year _____ Amount _____
16. Is future funding likely to be requested? Yes___ No_**X**___ Unknown_____
a. If yes, how much? _____
17. Purpose for future year funding: Recurring Operations _____ Non-recurring Construction _____ Other _____
18. Will this be an annual request? Yes___ No_**X**___ Unknown_____
19. Was the project included in an Agency budget request? Yes_**X**___ No___ Unknown_____
a. If yes, name the Agency: **Florida Department of Transportation**
20. Was this project in the Governor’s Recommended Budget? Yes___ No___ Unknown_**X**___
21. Is there documented need for this project? Yes___ No___ Unknown_**X**___
22. If yes, what is the documentation? (e.g. LRPP, Agency Needs Assessment, etc.) _____
23. Was this project heard before a publicly noticed meeting of a body of elected officials (municipal, county, or state)? Yes_**X**___ No___ Unknown_____
a. If yes, name the Body: **St. Lucie County Board of County Commissioners and St. Lucie County Legislative Delegation.**



St. Lucie County Legislative Budget Requests (Fiscal Year 2016-2017)



1. Project Title: **Treasure Coast Research Park Food Business Incubator**
2. Member Sponsor(s) Name: _____ District No: _____
3. What countywide or statewide interest does this project address?
This Food Business Incubator will be equipped with a commercial kitchen and research lab designed to aid entrepreneurs in the development of commercially viable food ventures. It would serve as a working laboratory for food entrepreneurs to develop a product, process, market or package, and to promote the product. The Incubator would connect the entrepreneur with professional business consultative services to assist in developing a business plan for the venture in order to ensure a sustainable operation.
4. Requestor: **Ben DeVries, Director** Department: **Treasure Coast Research Park**
5. Recipient: **St. Lucie County** Contact: **Nicole Fogarty: cell: (772) 708-3954**
2300 Virginia Ave office: (772) 462-6406
Fort Pierce, FL 34982 email: fogartyn@stlucieco.org
6. Project Description (include services to be provided):
To construct an 8,000 sq ft food business incubator, to be equipped with a commercial kitchen of a wet and dry designated area and research lab specifically designed to help aid users in the development of their product.
7. Is this a water project? Yes___ No **X** Unknown___
8. Is this project related to a federal or state declared disaster? Yes___ No **X** Unknown___
9. Measurable Outcome Anticipated: **N/A**
10. Amount requested from the State for this project FY 2016-2017: **\$2,000,000**
11. Total cost of the project: **\$3,900,000**
12. Is this request being made to fund (check all that apply):
Design___ Operations___ Construction **X**___
13. What type of match exists for this request? Local **X** Private___ Federal **X**___
None___
14. Enter all that apply: Total cash amount: **\$1,895,000** Total in-kind amount
15. Was this project previously funded by the State? Yes___ No **X** Unknown___
a. If yes, most recent fiscal year Amount
16. Is future funding likely to be requested? Yes___ No **X** Unknown___
a. If yes, how much?
17. Purpose for future year funding: Recurring Operations___ Non-recurring Construction___
Other___
18. Will this be an annual request? Yes___ No **X** Unknown___
19. Was the project included in an Agency budget request? Yes___ No **X** Unknown___
a. If yes, name the Agency:
20. Was this project in the Governor's Recommended Budget? Yes___ No___ Unknown **X**___
21. Is there documented need for this project? Yes___ No___ Unknown **X**___
22. If yes, what is the documentation? (e.g. LRPP, Agency Needs Assessment, etc.)
23. Was this project heard before a publicly noticed meeting of a body of elected officials (municipal, county, or state)? Yes **X** No___ Unknown___
a. If yes, name the Body: **St. Lucie County Board of County Commissioners and St. Lucie County Legislative Delegation.**



St. Lucie County Legislative Budget Requests (Fiscal Year 2016-2017)



1. Project Title: **Northwest Corridor Neighborhood Revitalization Plan**
2. Member Sponsor(s) Name: _____ District No: _____
3. What countywide or statewide interest does this project address?
To promote the creation of a strong community and economic development within a blighted region of the County, by utilizing and coordinating with existing community wide side services and identifying opportunities.
4. Requestor: **Beth Ryder, Director** Department: **Community Services**
5. Recipient: **St. Lucie County** Contact: **Nicole Fogarty: cell: (772) 708-3954**
2300 Virginia Ave office: (772) 462-6406
Fort Pierce, FL 34982 email: fogartyn@stlucieco.org
6. Project Description (include services to be provided):
To create a community and economic revitalization plan by utilizing and coordinating existing community wide services and identifying opportunities to promote economic development. This will enable the County to create a positive impact for its residents. St. Lucie County anticipates that the creation of the revitalization plan will generate opportunities to apply for various sources of funding needed to implement the plan such as the Community Development Block Grant Small Cities Program administered by the Florida Department of Economic Opportunity (DEO). The County has not been able to previously apply for funding due to not having the monetary resources needed to research and create a plan.
7. Is this a water project? Yes ___ No Unknown ___
8. Is this project related to a federal or state declared disaster? Yes ___ No Unknown ___
9. Measurable Outcome Anticipated:
10. Amount requested from the State for this project FY 2016-2017: **\$200,000**
11. Total cost of the project: **\$200,000**
12. Is this request being made to fund (check all that apply):
Design Operations ___ Construction ___
13. What type of match exists for this request? Local ___ Private ___ Federal ___
None
14. Enter all that apply: Total cash amount: _____ Total in-kind amount _____
15. Was this project previously funded by the State? Yes ___ No Unknown ___
a. If yes, most recent fiscal year _____ Amount _____
16. Is future funding likely to be requested? Yes ___ No Unknown ___
a. If yes, how much? _____
17. Purpose for future year funding: Recurring Operations _____ Non-recurring Construction _____
Other _____
18. Will this be an annual request? Yes ___ No Unknown ___
19. Was the project included in an Agency budget request? Yes No ___ Unknown ___
a. If yes, name the Agency: **Department of Economic Opportunity**
20. Was this project in the Governor's Recommended Budget? Yes ___ No Unknown ___
21. Is there documented need for this project? Yes ___ No ___ Unknown
22. If yes, what is the documentation? (e.g. LRPP, Agency Needs Assessment, etc.)
23. Was this project heard before a publicly noticed meeting of a body of elected officials (municipal, county, or state)? Yes No ___ Unknown ___
a. If yes, name the Body: **St. Lucie County Board of County Commission and St. Lucie County Legislative Delegation**



St. Lucie County Legislative Budget Requests (Fiscal Year 2016-2017)



1. Project Title: **Regional Transit Administration/Maintenance Facility**
2. Member Sponsor(s) Name: _____ District No: _____
3. What countywide or statewide interest does this project address?
To promote and create easily accessible transportation to all citizens of the State of Florida.
4. Requestor: **Beth Ryder, Director** Department: **Community Services**
5. Recipient: **St. Lucie County** Contact: **Nicole Fogarty: cell: (772) 708-3954**
2300 Virginia Ave office: **(772) 462-6406**
Fort Pierce, FL 34982 email: **fogartyn@stlucieco.org**
6. Project Description (include services to be provided):
To create a conceptual design plan for a transit administration and maintenance facility which will service the three county region. The facility is slated for Selvitz Road, just north of Midway Road and will be used to store and maintain the fixed route, para-transit buses and support vehicles, as well as house staff and operational supports required for the success of the system.
Currently, transit operations, fixed route and paratransit buses are housed at three different locations, each with its associated maintenance and operating costs. Vehicle maintenance and service are outsourced. The proposed appropriation will assist in completion of the next step toward construction of the facility, allowing for internal maintenance and service work, storage, security and a centralized operational site.
7. Is this a water project? Yes___ No **X** Unknown___
8. Is this project related to a federal or state declared disaster? Yes___ No **X** Unknown___
9. Measurable Outcome Anticipated: **N/A**
10. Amount requested from the State for this project FY 2016-2017: **\$200,000**
11. Total cost of the project: **\$200,000**
12. Is this request being made to fund (check all that apply):
Design___ Operations___ Construction **X**___
13. What type of match exists for this request? Local___ Private___ Federal **X**___
None___
14. Enter all that apply: Total cash amount: **\$292,363** Total in-kind amount
15. Was this project previously funded by the State? Yes___ No **X**___ Unknown___
a. If yes, most recent fiscal year Amount
16. Is future funding likely to be requested? Yes___ No **X**___ Unknown___
a. If yes, how much?
17. Purpose for future year funding: Recurring Operations Non-recurring Construction
Other
18. Will this be an annual request? Yes___ No **X**___ Unknown___
19. Was the project included in an Agency budget request? Yes___ No **X**___ Unknown___
a. If yes, name the Agency:
20. Was this project in the Governor's Recommended Budget? Yes___ No___ Unknown **X**___
21. Is there documented need for this project? Yes___ No___ Unknown **X**___
22. If yes, what is the documentation? (e.g. LRPP, Agency Needs Assessment, etc.)
23. Was this project heard before a publicly noticed meeting of a body of elected officials (municipal, county, or state)? Yes **X**___ No___ Unknown___
a. If yes, name the Body: **St. Lucie County Board of County Commissioners and St. Lucie County Legislative Delegation.**



St. Lucie County Legislative Budget Requests (Fiscal Year 2016-2017)



1. Project Title: **Treasure Coast Food Bank Food Production Facility**
2. Member Sponsor(s) Name: _____ District No: _____
3. What countywide or statewide interest does this project address?
To develop, strengthen linkages, and create profitable and sustainable markets between local Florida farmers and cooperatives and 100 area schools and the Treasure Coast Food Bank's (TCFB) own 200 human-service partner agencies who in turn distribute food to every area of the TCFB's four-county jurisdiction of 100,000 food-insecure people.
4. Requestor: **Judy Cruz, Director** Department: **Treasure Coast Food Bank**
5. Recipient: **Treasure Coast Food Bank** Contact: **Nicole Fogarty: cell: (772) 708-3954**
401 Angle Road Judy Cruz: (772) 489-3034
Fort Pierce, FL 34947 email: fogartyn@stlucieco.org
6. Project Description (include services to be provided):
The Treasure Coast Food Bank (TCFB) will refurbish their own facility to house equipment such as freezers, coolers, rolling tables, washers, and several necessary commercial kitchen items. TCFB will fully utilize the new, fully-equipped Food Production Facility which will process, prepare, value-add, flash-freeze, and cryovac 25 million pounds of healthy produce (in just the first year) for area schools and TCFB's 200 partner agencies.
7. Is this a water project? Yes___ No **X** Unknown___
8. Is this project related to a federal or state declared disaster? Yes___ No **X** Unknown___
9. Measurable Outcome Anticipated: **N/A**
10. Amount requested from the State for this project FY 2016-2017: **\$750,000**
11. Total cost of the project: **\$1,500,000**
12. Is this request being made to fund (check all that apply):
Design___ Operations___ Construction **X**___
13. What type of match exists for this request? Local **X**___ Private___ Federal **X**___ None___
14. Enter all that apply: Total cash amount: **\$750,000** Total in-kind amount _____
15. Was this project previously funded by the State? Yes___ No **X**___ Unknown___
a. If yes, most recent fiscal year _____ Amount _____
16. Is future funding likely to be requested? Yes___ No **X**___ Unknown___
a. If yes, how much? _____
17. Purpose for future year funding: Recurring Operations _____ Non-recurring Construction _____
Other _____
18. Will this be an annual request? Yes___ No **X**___ Unknown___
19. Was the project included in an Agency budget request? Yes **X**___ No___ Unknown___
a. If yes, name the Agency: **Department of Agriculture and Consumer Services**
20. Was this project in the Governor's Recommended Budget? Yes___ No___ Unknown **X**___
21. Is there documented need for this project? Yes___ No___ Unknown **X**___
22. If yes, what is the documentation? (e.g. LRPP, Agency Needs Assessment, etc.) _____
23. Was this project heard before a publicly noticed meeting of a body of elected officials (municipal, county, or state)? Yes **X**___ No___ Unknown___
a. If yes, name the Body: **St. Lucie County Board of County Commissioners and St. Lucie County Legislative Delegation.**