

## WALL OF REMEMBRANCE CONCEPT

The wall is to recognize all of the lives that have been taken by violence in our community. Creating a reflective environment for remembrance.

**“AS LONG AS WE SPEAK THEIR NAMES THEY WILL NOT BE FORGOTTEN”**

The heavy timber that supports the panels is an organic material, like the human body, a living breathing organism taken from the forest and shaped into a new frame, tempered and treated for its new environment.

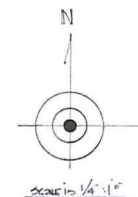
Suspended from the heavy timber frames are 1” thick stainless steel panels. The strength and durability of stainless steel reminds us that though a physical presence no longer remains, our memories will not be taken. Our memories survive, etched in solid steel.

**“THE STAINLESS STEEL PANELS HAVE BEEN CONSTRUCTED FROM SEIZED WEAPONS .”**

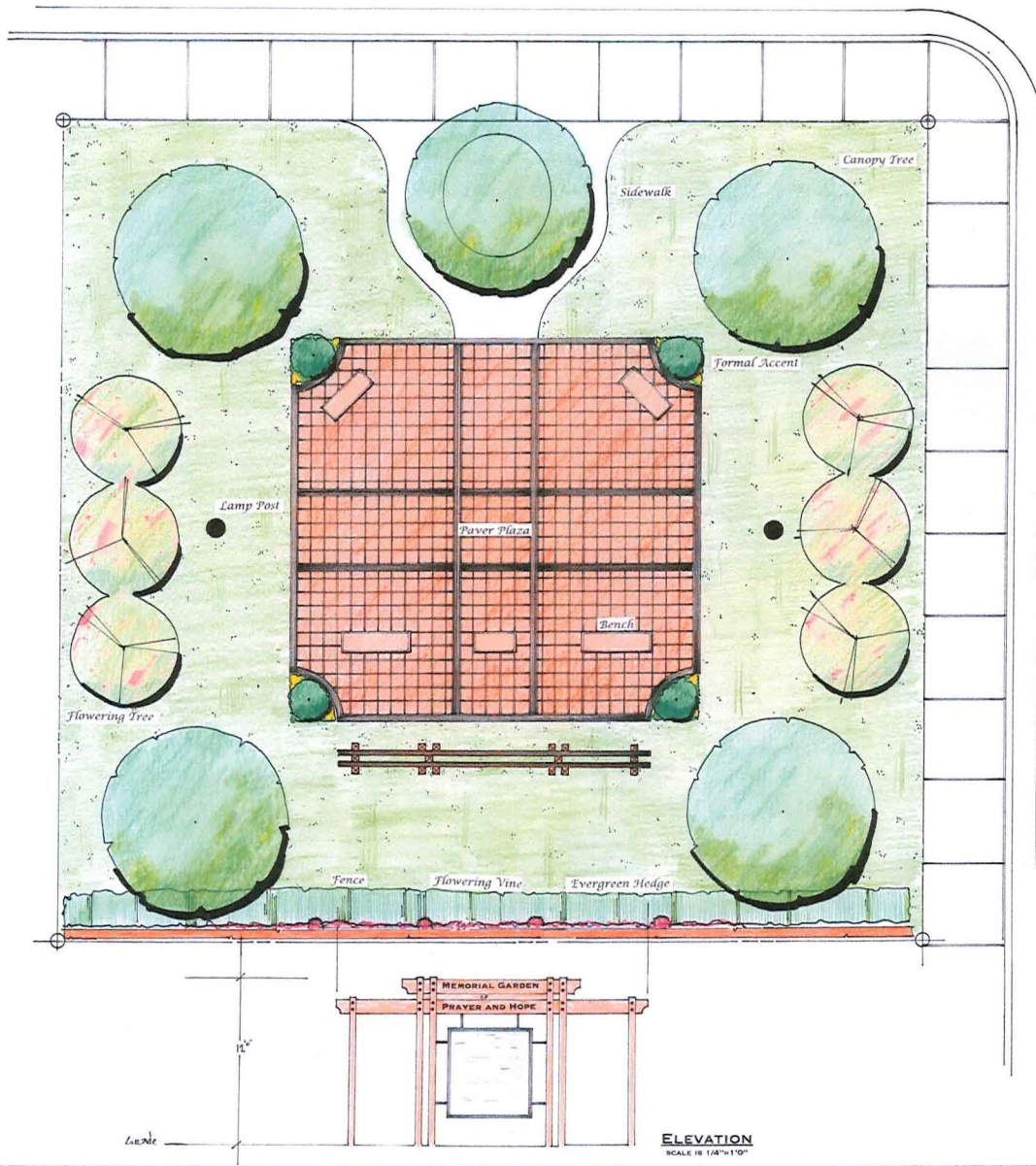
We will use heavy stainless bolts at the intersects showing the connection between our physical and spiritual selves.

The massing of the columns represent the collective holding the memories of those who have passed.

# AVENUE D

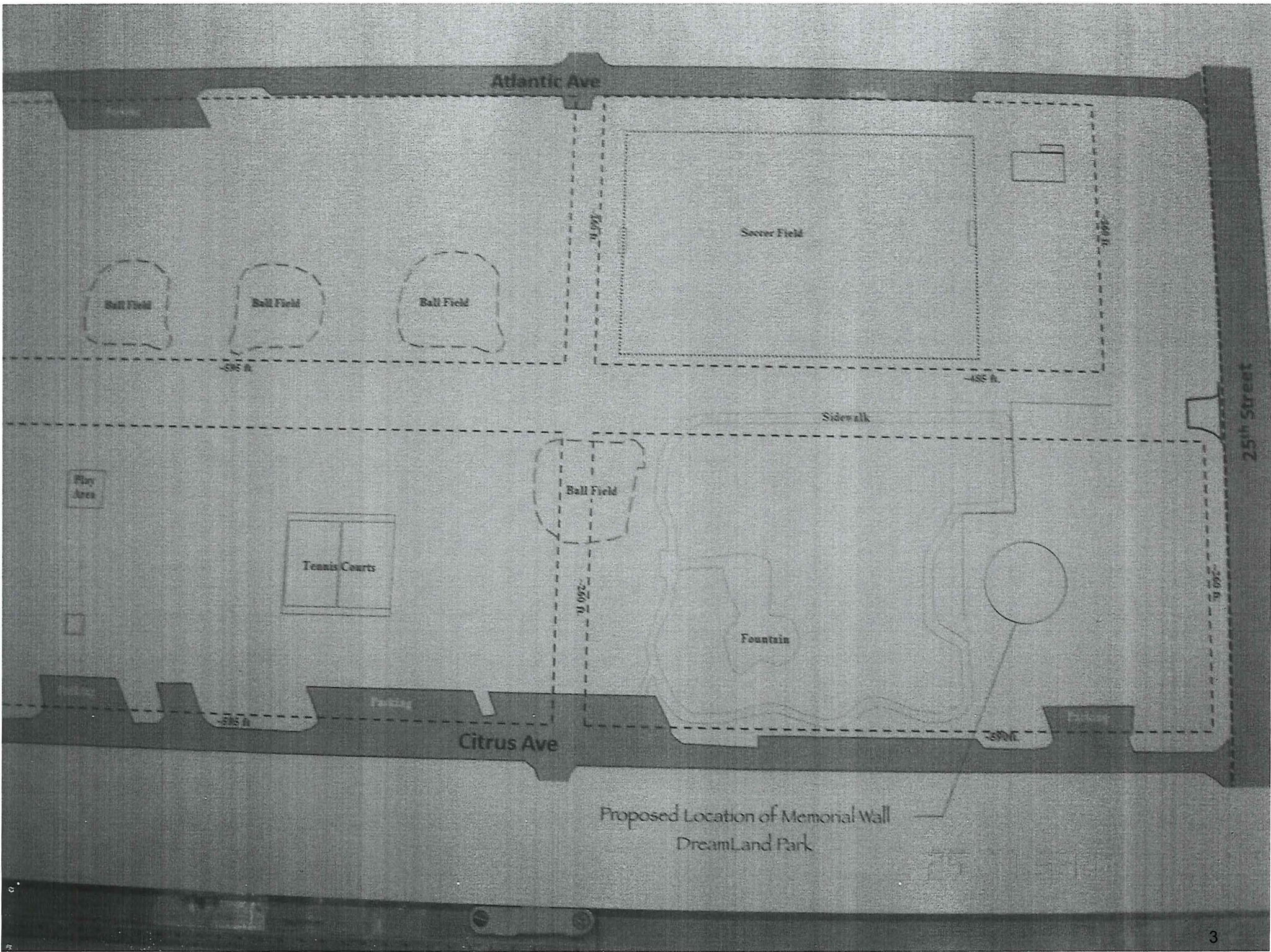


Memorial Garden  
of  
Prayer and Hope



MEANS COURT

ORIGINAL LOCATION





25 1:30AM







*Pattern layout*

Sand mola





Weapons to Crucible



Pouring Panel

panel



WABO:21 92  
26 12:09AM



Gankry Timber