

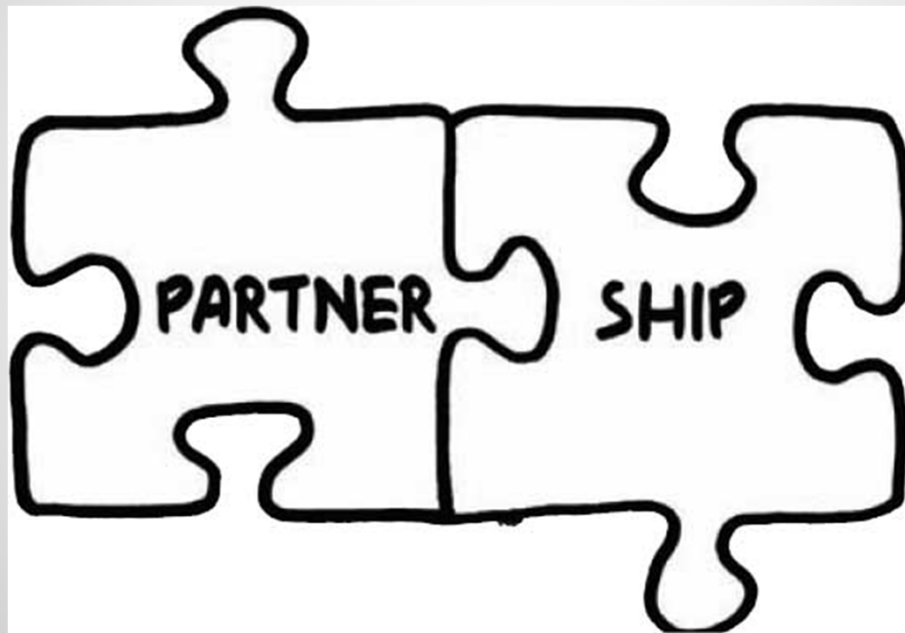
The A.E. Backus Museum of Art Building Dreams Since 1960

Presentation to the Ft. Pierce City Commission

November 14, 2016 8:00 AM

By Kathleen Piowaty Fredrick, Executive Director

Since 1960 We Have Operated
With a Four Page Lease



It Has Been a Win/Win Partnership
Based Upon Trust

The Original Gallery of Ft. Pierce Opened in 1961



A. E. Backus envisioned Public Art in this 1959 Conceptual Design Painting

1988- 1990 Expansion Project



Built Without Any Revision to the 1960 Lease

NINE Years of Wrangling and a Mountain of Paperwork Later



City Commission signs 46 page lease for
2.1 acres of land

We Had A Dream



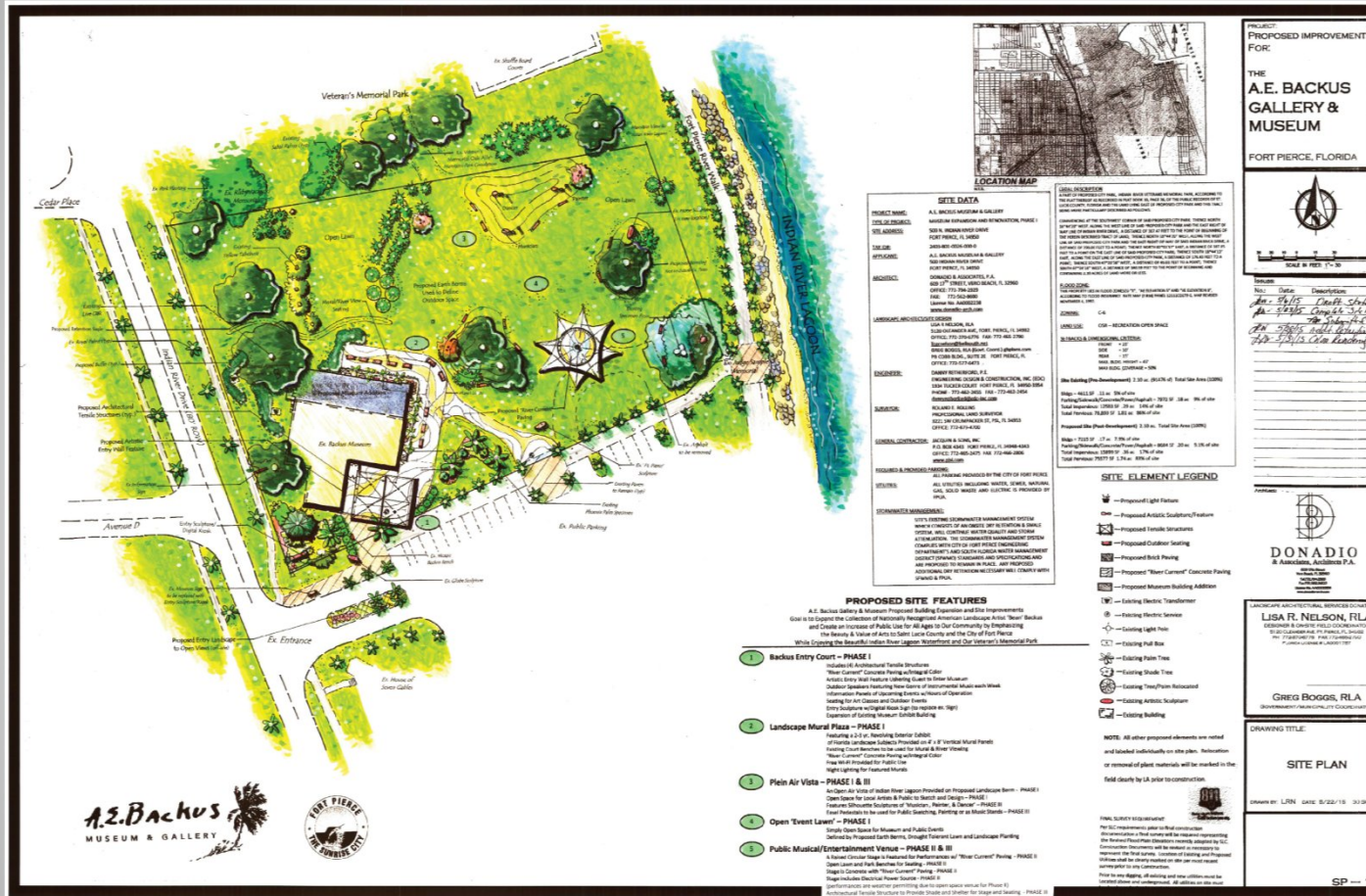
Estimate Cost \$2.5 Million Dollars

Then the Economy Collapsed



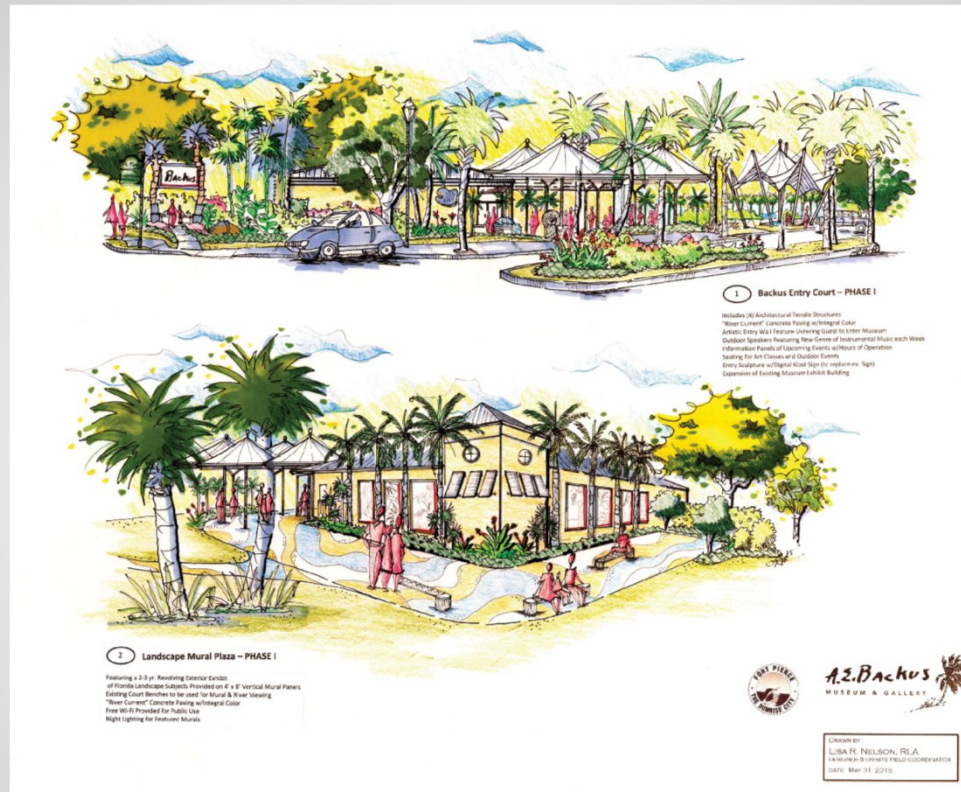
We could not afford to
build our dream plan

We Created a New Dream



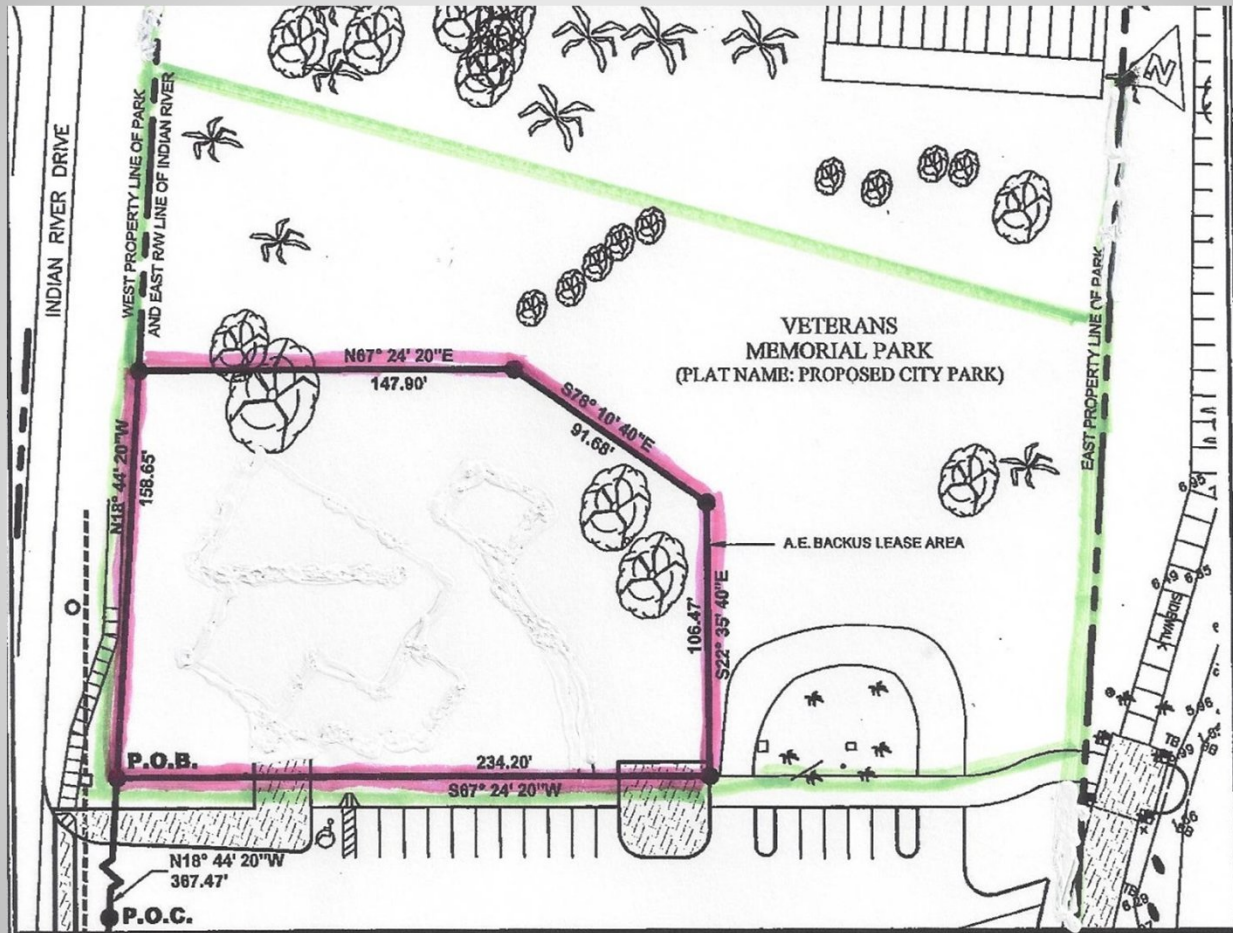
2.1 Acre Site Plan Approved by City Planning and Building Departments, Spring of 2016

A Better Dream A More Inclusive Museum



Featuring Public Art and Public Space
Never Considered in the First Dream

City Staff Suggests



2.1 Acre Area Leased with Improved Area, Highlighted in Pink, Insured by Museum for Liability

We Aren't Done Growing

- Still Need a Dedicated Highwaymen Wing
- Still Need an Outdoor Performance Venue
- Still Need Interactive Playground Equipment
- Still Need More Sculpture in the Park
- Still Need a Backus History Trail in Ft. Pierce

Original Warranty Deed going back to 1958 reserves the park's land for public use and access.

Working Together We Can Accomplish It All

- The A.E. Backus Museum has been a reliable partner with the City of Ft. Pierce for 56 years.
- The Current project is a \$1.4 million investment in the City. Only LOCAL contractors were used.
- The Museum has always fulfilled its commitments to the City and the community.
- The Museum will continue to be a good City partner long into the future.
- The Museum requests the Commission approve an amended lease to reflect the current project's parameters and room for future expansion.
- The Museum requests the City's assistance with the development of an outdoor performance venue and a future expansion to house a full Highwaymen exhibition wing with multi-media components and interactive exhibits.