



Architectural Elements

- a. Predominantly vertical, rectangular, windows
- b. Lightly stained / painted siding in a horizontal pattern
- c. Gable roof
- d. Gable dormer
- e. Round columns with square base

Architectural Elements (cont.)

- f. Porch with picket railing
- g. Standing seam metal roof
- h. Patio courtyard (377 sq.ft.)
- i. Arches
- j. Display windows
- k. Eaves

Additional Features

- Multiple roof planes
- Eaves
- Change in roof height
- Dormers

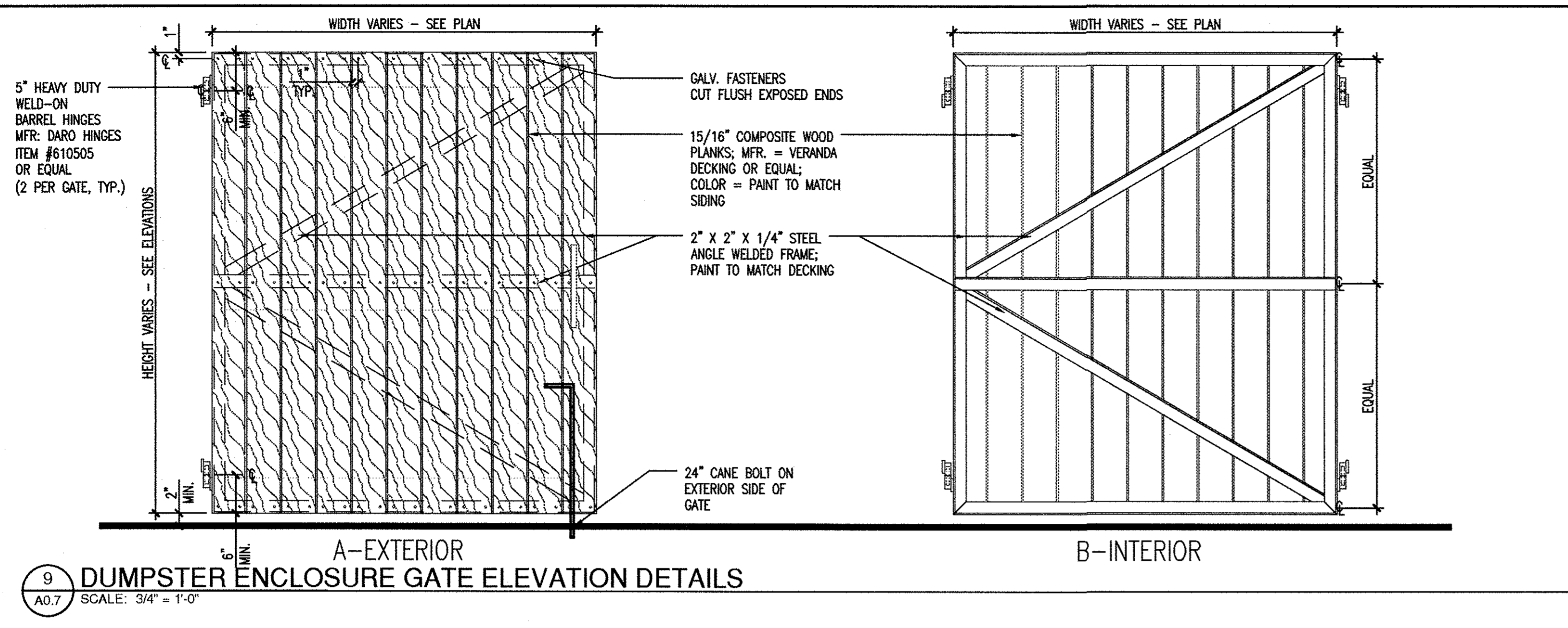
Finish Schedule

Synthetic wood trim & fascia	Sherwin Williams	SW7035 Aesthetic White
Synthetic wood trim	Sherwin Williams	SW6644 Champagne White
Fiberglass column shroud	Pacific Columns	White
Cementitious siding	HardiePlank	SW7036 Accessible Beige
Cultured stone	Boral Stone Products	Echo Ridge
Standing seam metal roof	Pantone	Cool Gray 7C
Aluminum gutter system	Hickman	White
Green Band	Pantone	376

ARCHITECTURAL ELEMENTS
CUMBERLAND FARMS - FORT PIERCE



12-22-15

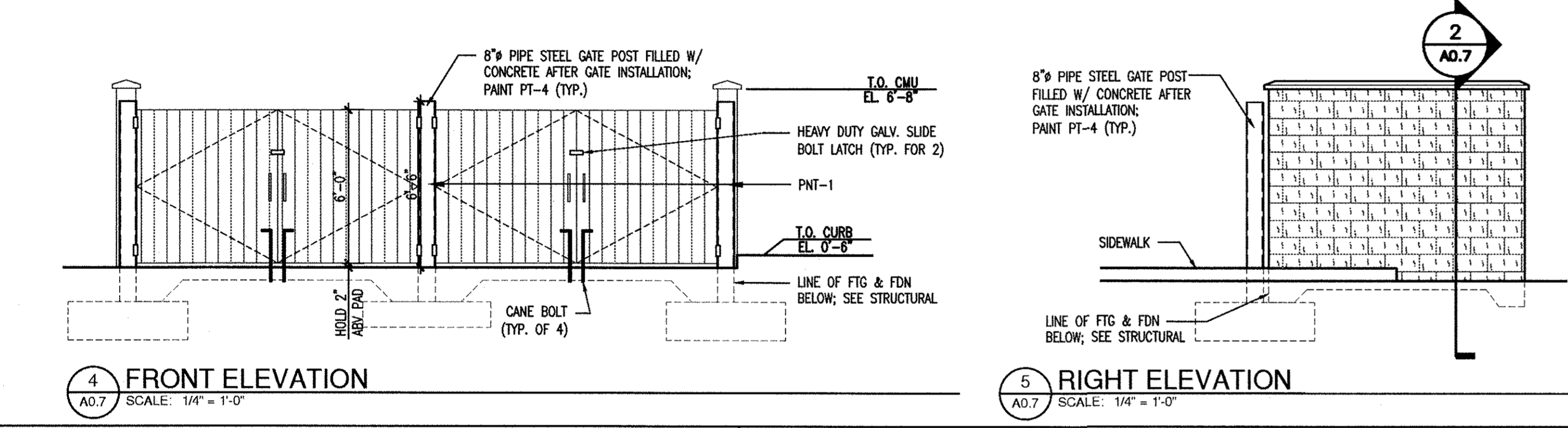


9 DUMPSTER ENCLOSURE GATE ELEVATION DETAILS
SCALE: 3/4" = 1'-0"

8 FINISH SCHEDULE
SCALE: NTS

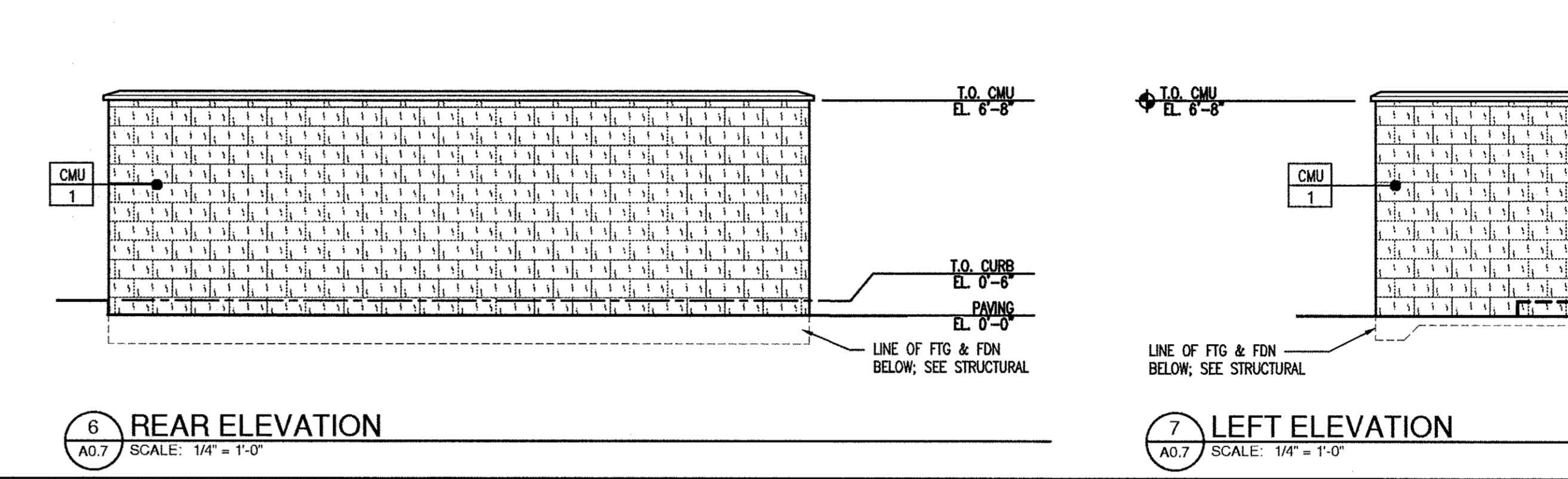
FINISH SCHEDULE	ANNO #	DESC.	MANUFACTURER	MODEL	COLOR	NOTES
CMU-1		SPLIT FACE CMU			TO MATCH MAIN BUILDING COLOR, SEE A3.1	SUBMIT SAMPLES FOR ARCHITECT TO REVIEW
PT-4		PAINT			SEE A0.3	

8 FINISH SCHEDULE
SCALE: NTS



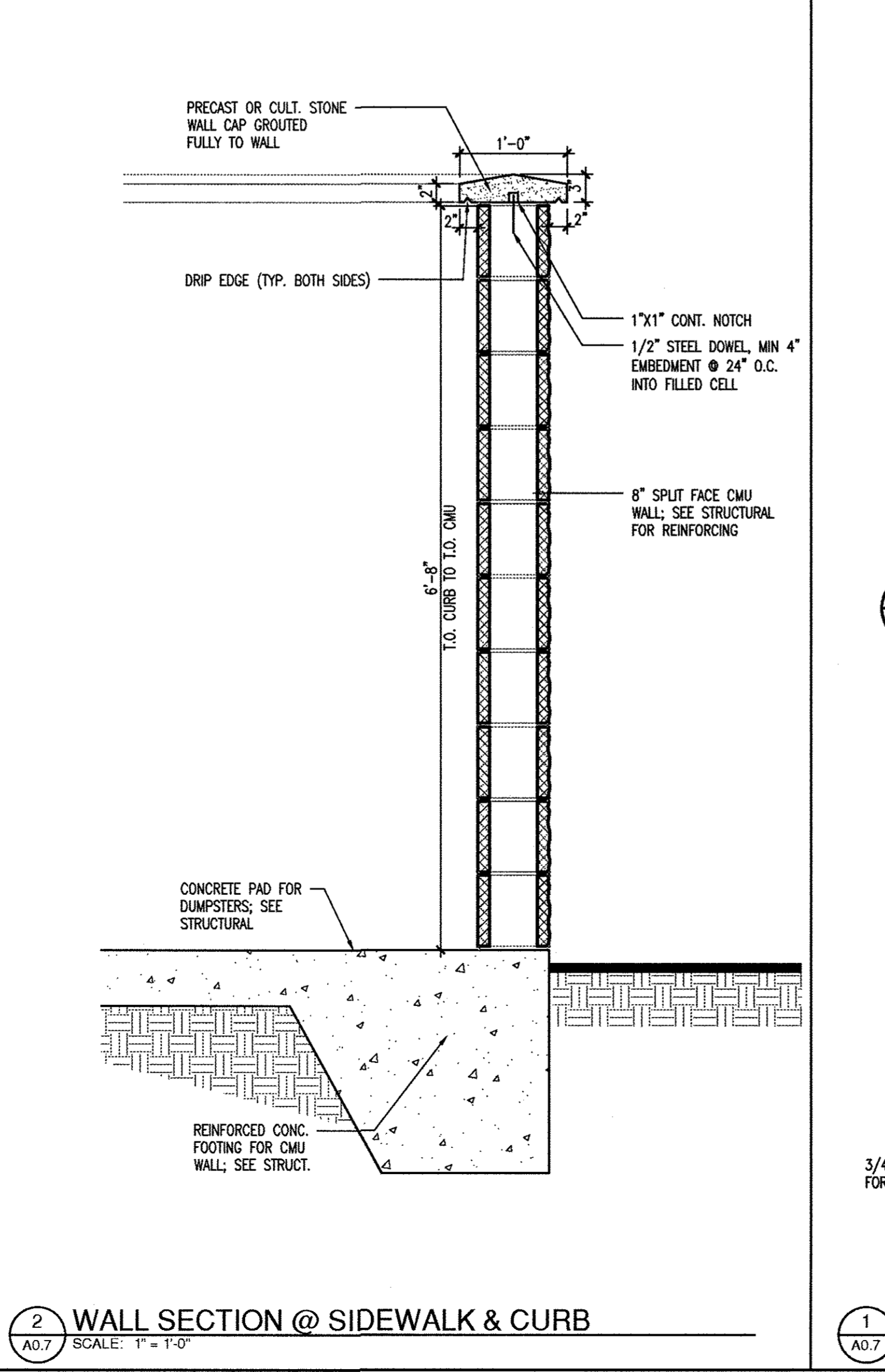
4 FRONT ELEVATION
SCALE: 1/4" = 1'-0"

5 RIGHT ELEVATION
SCALE: 1/4" = 1'-0"

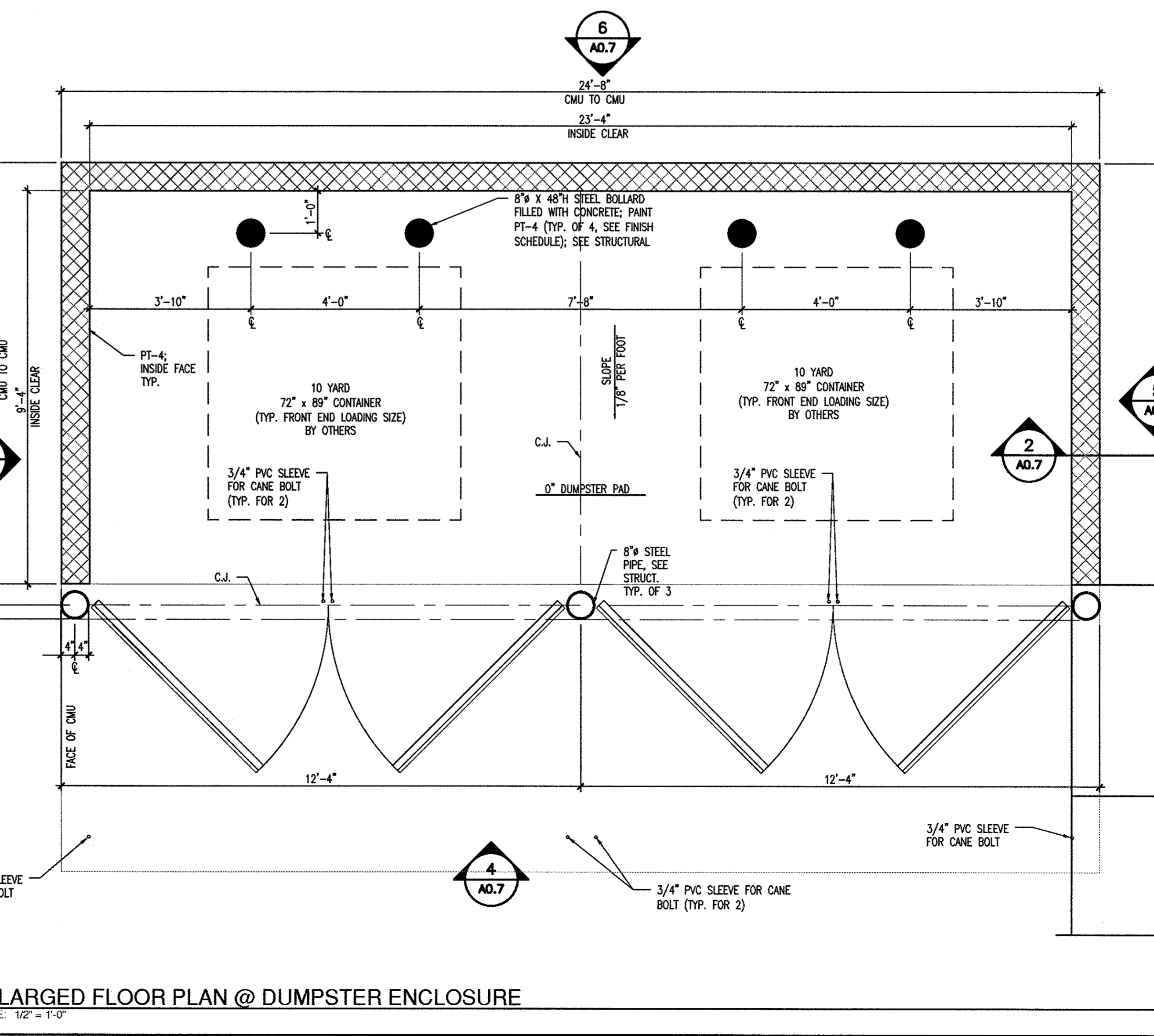


6 REAR ELEVATION
SCALE: 1/4" = 1'-0"

7 LEFT ELEVATION
SCALE: 1/4" = 1'-0"



2 WALL SECTION @ SIDEWALK & CURB
SCALE: 1" = 1'-0"



1 ENLARGED FLOOR PLAN @ DUMPSTER ENCLOSURE
SCALE: 1/2" = 1'-0"

Project Title
New Construction:

Cumberland FARMS

Store # TBD
VSH # TBD
Oracle # FL18142

Virginia Ave. @ 35th
Fl. Pierce, FL 34981

Owner

Cumberland Farms, Inc.
100 Crossing Blvd
Frammingham, MA 01702
tel 508 270 1400

Architect

JACOBS

200 S. ORANGE AVE. SUITE 900
ORLANDO, FLORIDA, 32801
PHONE: 407-903-8001, FAX: 407-903-8191

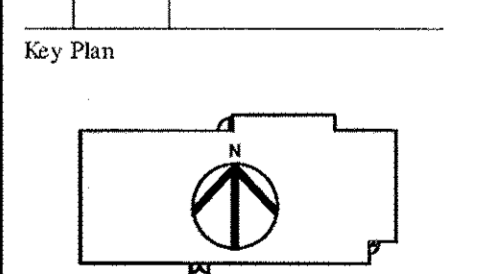
FLORIDA ARCHITECTURAL CORPORATION
LICENSE #AC001790
FLORIDA ENGINEERING CERTIFICATE
AUTHORIZATION #2822

Seal

Consultant

Revisions

No.	Date	Issued for
07/28/15	SD SUBMISSION	
11/9/15	REV FOR FITCHED ROOF	



Title

DUMPSTER ENCLOSURE ENLARGED PLAN & DETAILS

Date: 07/28/15
Drawing No.

A0.7

Project No. FL18142



Store # TBD
VSH # TBD
Oracle # FL8142

Virginia Ave. @ 35th
Ft. Pierce, FL 34981

Owner

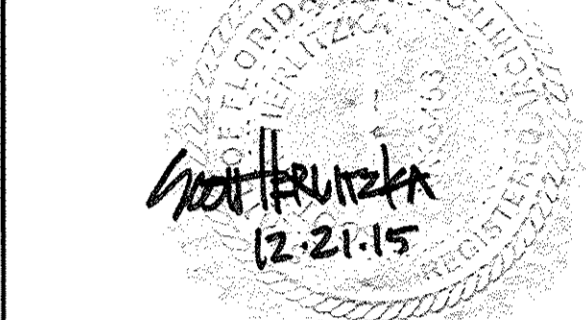
Cumberland Farms, Inc.
100 Crossing Blvd
Framingham, MA 01702
tel 508 270 1400

Architect



200 S. ORANGE AVE, SUITE 900
ORLANDO, FLORIDA, 32801
PHONE: 407-903-5001, FAX: 407-903-5191
FLORIDA ARCHITECTURAL CORPORATION
LICENSE #AC001790
FLORIDA ENGINEERING CERTIFICATE
AUTHORIZATION #252

Seal



Consultant

Revisions

No.	Date	Issued for
07/28/15		SD SUBMISSION
11/9/15		REV FOR PITCHED ROOF

Key Plan



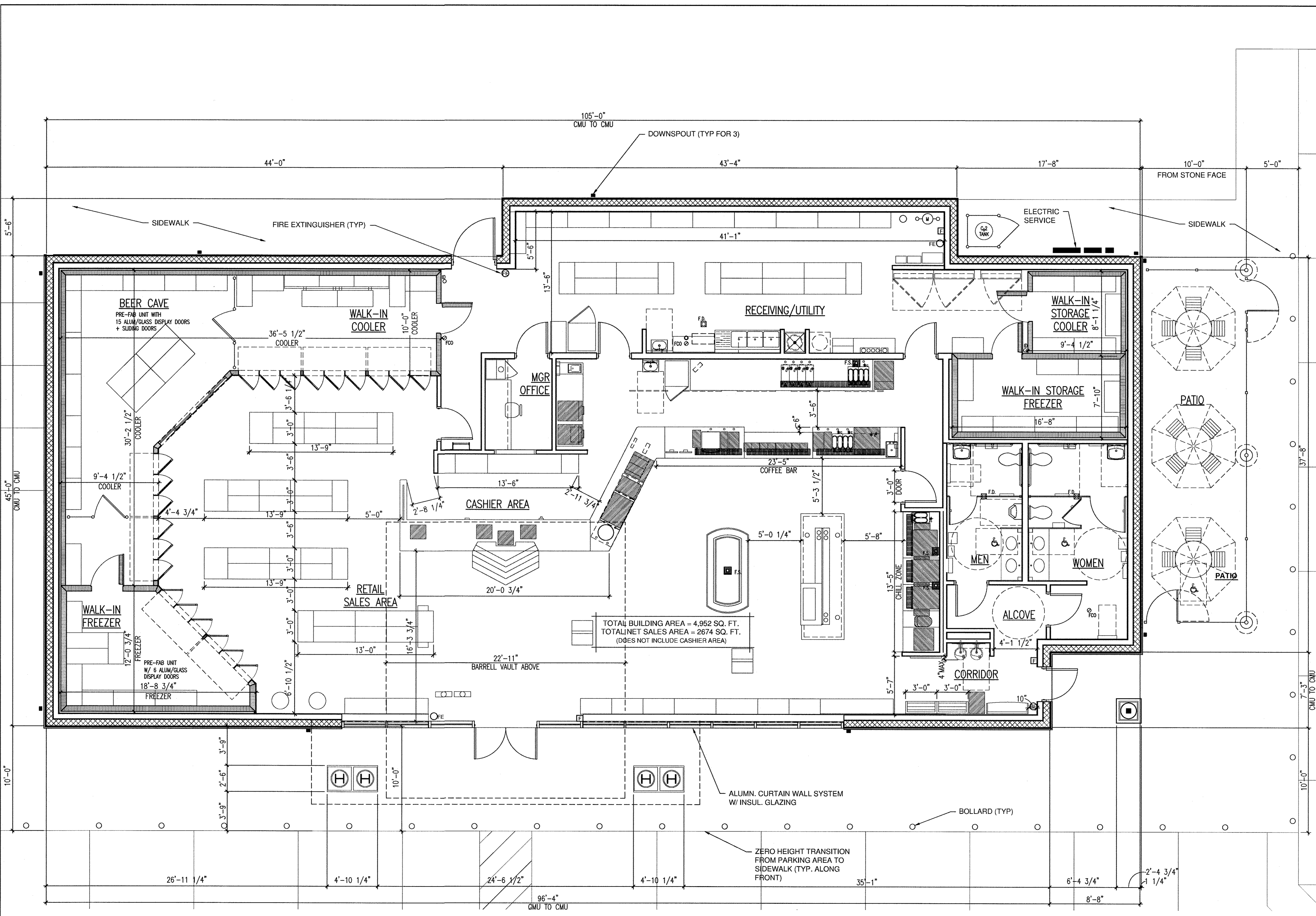
Title
FLOOR PLAN

Date: 07/28/15

Drawing No.

A1.1

Project No. FL8142



105'-0"
CMU TO CMU
DOWNSPOUT (TYP FOR 3)

SIDEWALK
FIRE EXTINGUISHER (TYP)

ELECTRIC SERVICE
G2 TANK

10'-0"
FROM STONE FACE
SIDEWALK

BEER CAVE
PRE-FAB UNIT WITH
15 ALUM/GLASS DISPLAY DOORS
+ SLIDING DOORS

WALK-IN
COOLER
10'-0" COOLER

RECEIVING/UTILITY

WALK-IN
STORAGE
COOLER

MGR
OFFICE

WALK-IN STORAGE
FREEZER

PATIO

CASHIER AREA

COFFEE BAR

MEN

WOMEN

PATIO

RETAIL
SALES AREA

ALCOVE

CORRIDOR

TOTAL BUILDING AREA = 4,952 SQ. FT.
TOTAL NET SALES AREA = 2674 SQ. FT.
(DOES NOT INCLUDE CASHIER AREA)

22'-11"
BARRELL VAULT ABOVE

ALUMN. CURTAIN WALL SYSTEM
W/ INSUL. GLAZING

BOLLARD (TYP)

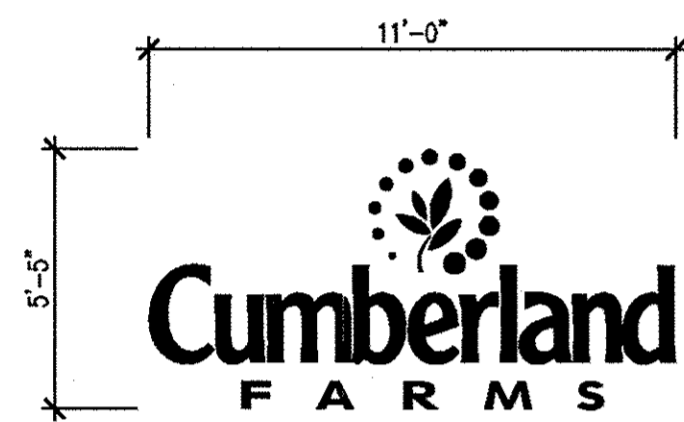
ZERO HEIGHT TRANSITION
FROM PARKING AREA TO
SIDEWALK (TYP. ALONG
FRONT)

1 FLOOR PLAN
A1.1 SCALE: 1/4" = 1'-0"

FINISH SCHEDULE					
ANNO #	DESC.	MANUFACTURER	MODEL	COLOR	NOTES
SW-1	SYNTHETIC WOOD TRIM & FASCIA	CERTAINTED		PAINT WHITE COLOR TO BE SELECTED BY ARCHITECT	PROVIDE SCARF JOINTS ON ALL EXTERIOR SYNTHETIC WOOD TRIM. GC TO PUTTY ALL NAIL HOLES & PAINT ALL SYNTHETIC WOOD TRIM & PANELS.
SW-2	SYNTHETIC WOOD TRIM	CERTAINTED		PT-7	PROVIDE SCARF JOINTS ON ALL EXTERIOR SYNTHETIC WOOD TRIM. GC TO PUTTY ALL NAIL HOLES & PAINT ALL SYNTHETIC WOOD TRIM & PANELS.
FB-1	FIBERGLASS COLUMN SHROUD	PACIFIC COLUMNS		SMOOTH WHITE FINISH	20"X12" ENDURA STONE PLAIN COLUMN ROUND SHAFT WITH TRUE ENTASIS TAPERED SMOOTH FINISH
CS-1	CEMENTITIOUS SIDING	HARDIE-PLANK		HERRINGBONE	ROUGH CEDAR FINISH. PROVIDE ALL REQ'D ACCESSORIES AND TRIM FOR A COMPLETE INSTALLATION.
CS-1	CULTURED STONE	BORAL STONE PRODUCTS, LLC	CSV TBD COUNTRY LEDGESTONE	ECHO RIDGE	INSTALL DRYSTACK ONLY
ROOF-1	STANDING METAL SEAM ROOFING	TBD	TBD	GRAY TBD	30 YEAR WARRANTY
GU-1	ALUMINUM GUTTER SYSTEM	HICKMAN	.050 ALUMINUM	WHITE	PROVIDE ALL ACCESSORIES REQ'D FOR A COMPLETE CONTINUOUS INSTALLATION. INSTALL PER MFG INSTRUCTIONS. ENSURE SEALED, WATERTIGHT CORNER CONNECTIONS. FLASH & SEAL TO DOWNSPOUTS AS REQ'D.

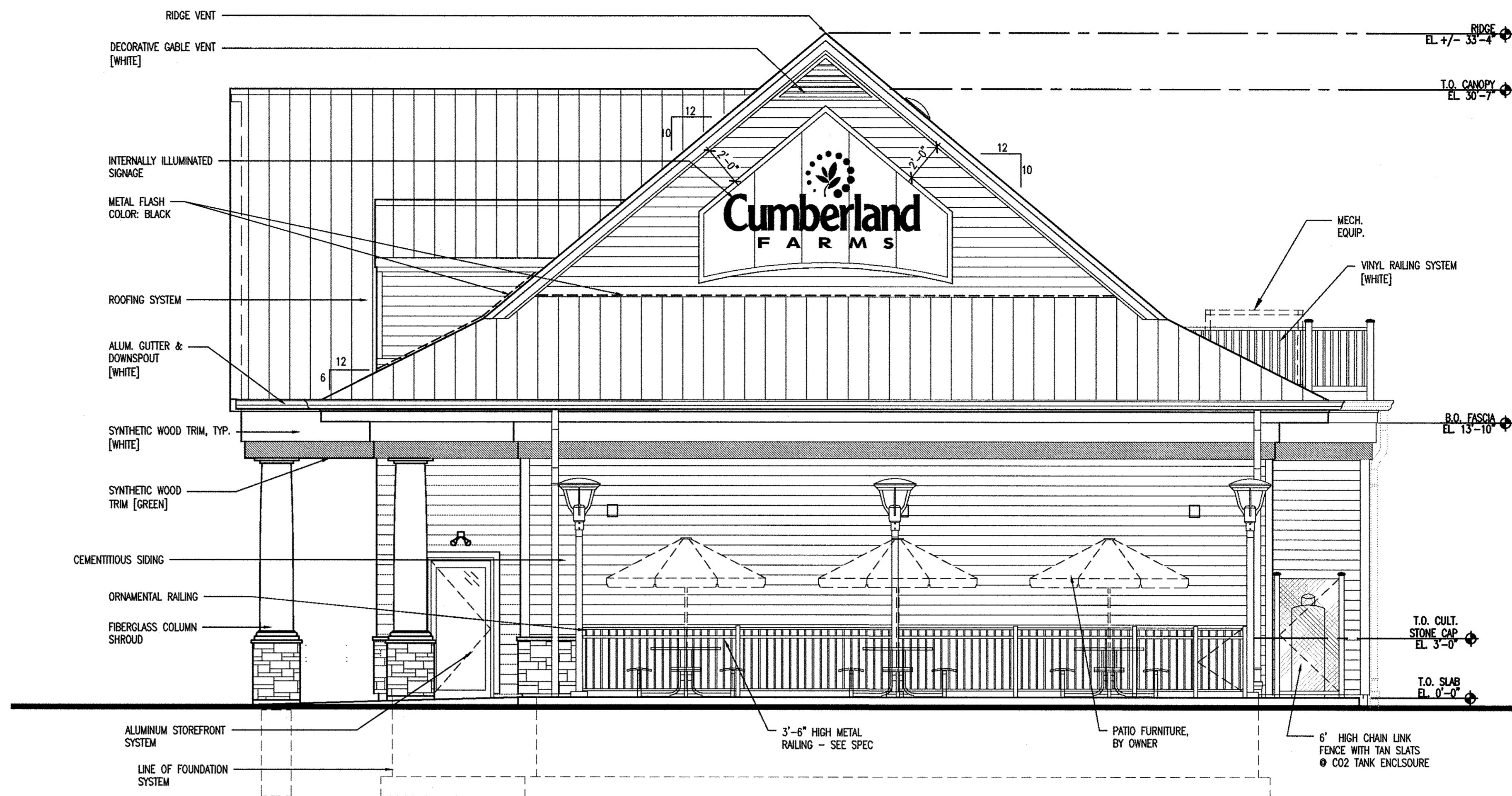
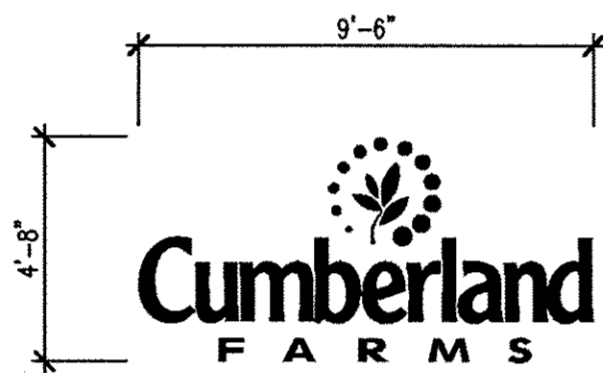
WALL SIGNAGE SPECIFICATION

CUSTOM FABRICATED INTERNALLY ILLUMINATED SIGN BOX
SUPPLIED BY OWNER - INSTALLED BY SIGN VENDOR
SIGN AREA = 59.6 SQ.FT



WALL SIGNAGE SPECIFICATION

CUSTOM FABRICATED INTERNALLY ILLUMINATED SIGN BOX
SUPPLIED BY OWNER - INSTALLED BY SIGN VENDOR
SIGN AREA = 44.5 SQ.FT



4 FRONT WALL SIGNAGE DETAIL

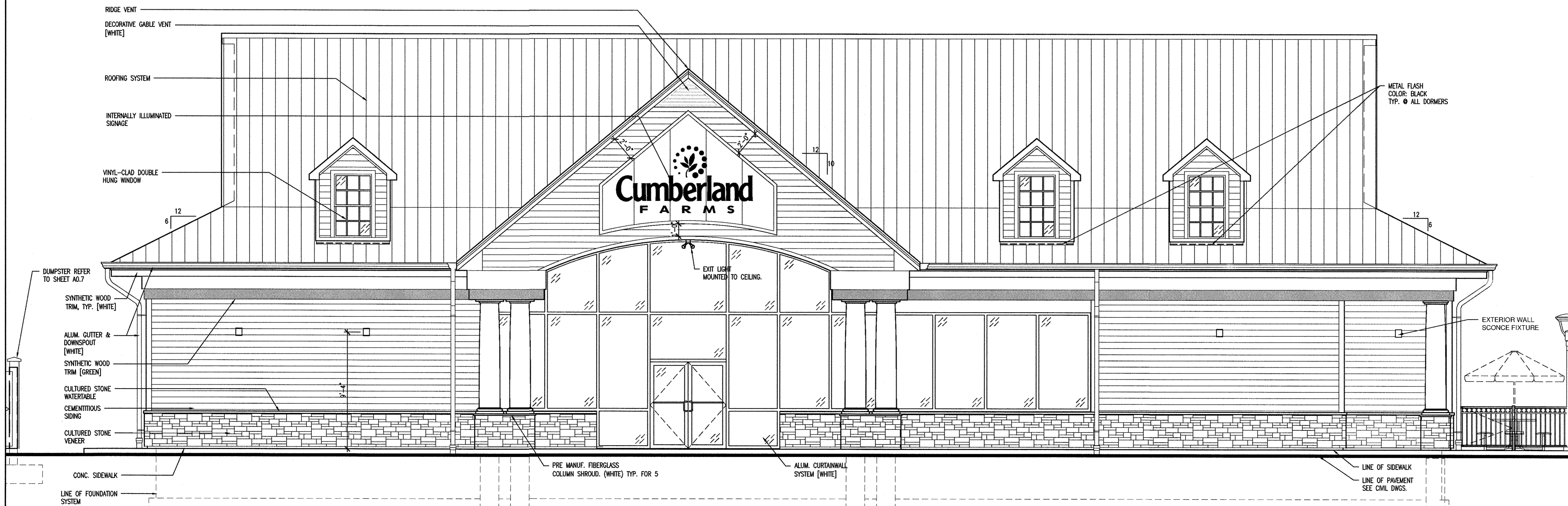
AS.1 SCALE: 1/4" = 1'-0"

3 SIDE WALL SIGNAGE DETAIL

AS.1 SCALE: 1/4" = 1'-0"

2 RIGHT SIDE ELEVATION

AS.1 SCALE: 1/4" = 1'-0"



1 FRONT ELEVATION

AS.1 SCALE: 1/4" = 1'-0"

Project Title
New Construction:



Store # TBD
VSH # TBD
Oracle # FL8142

Virginia Ave. @ 35th
F. Pierce, FL 34981

Owner

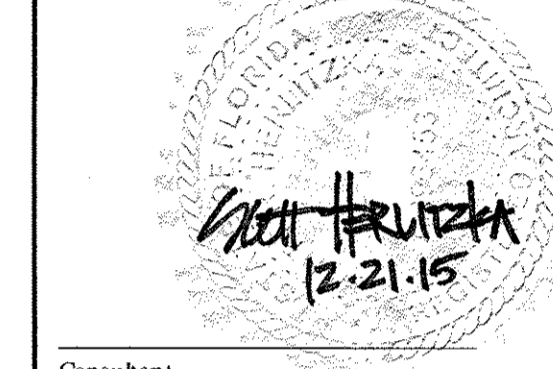
Cumberland Farms, Inc.
100 Crossing Blvd
Frammingham, MA 01702
tel 508 270 1400

Architect



200 S. ORANGE AVE. SUITE 900
ORLANDO, FLORIDA, 32801
PHONE: 407-908-5201, FAX: 407-903-9191
FLORIDA ARCHITECTURAL CORPORATION
LICENSE #AAC001780
FLORIDA ENGINEERING CERTIFICATE
AUTHORIZATION #2829

Seal

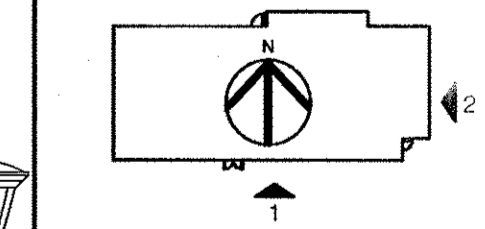


Consultant

Revisions

No.	Date	Issued for
07/28/15	SD SUBMISSION	
11/9/15	REV FOR PITCHED ROOF	

Key Plan



Title
EXTERIOR ELEVATIONS

Date: 07/25/15

Drawing No.

A3.1

Project No. FL8142



Store # TBD
VSH # TBD
Oracle # FL8142

Virginia Ave. @ 35th
Ft. Pierce, FL 34981

Owner

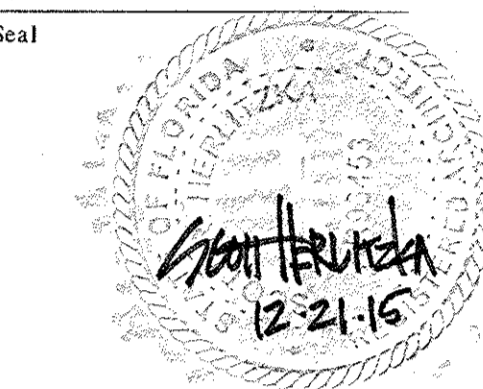
Cumberland Farms, Inc.
100 Crossing Blvd
Framingham, MA 01702
tel 508 270 1400

Architect



200 S. ORANGE AVE. SUITE 900
ORLANDO, FLORIDA, 32801
PHONE: 407-933-5001, FAX: 407-933-6191
FLORIDA ARCHITECTURAL CORPORATION
LICENSE #AAC001790
FLORIDA ENGINEERING CERTIFICATE
AUTHORIZATION #2822

Seal

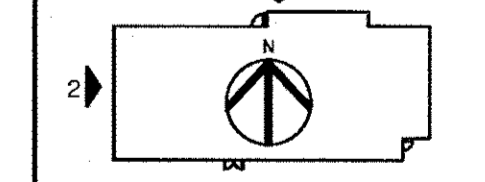


Consultant

Revisions

No.	Date	Issued for
07/28/15	SD SUBMISSION	
11/9/15	REV FOR PITCHED ROOF	

Key Plan



Title

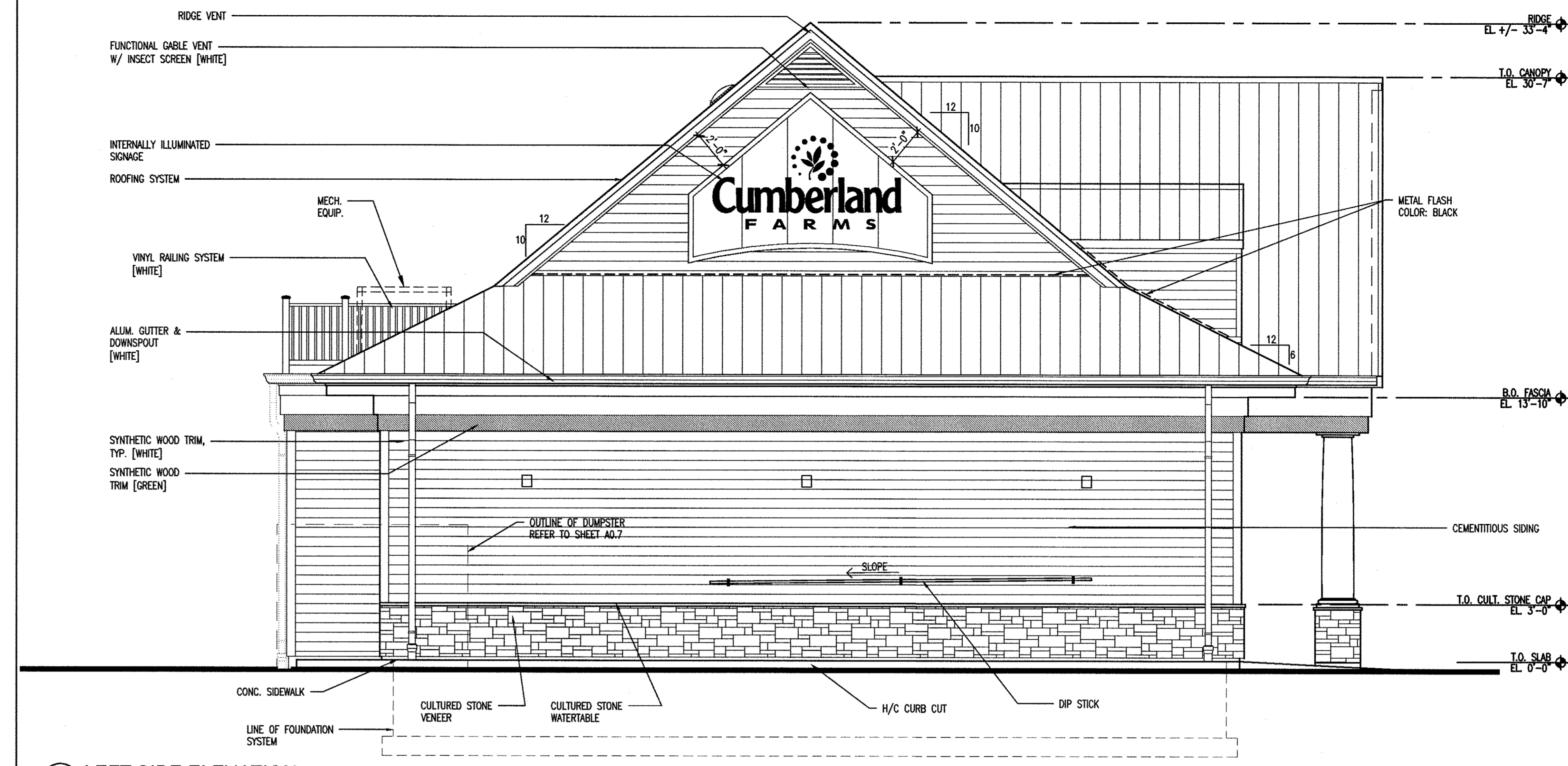
EXTERIOR ELEVATIONS

Date: 07/28/15

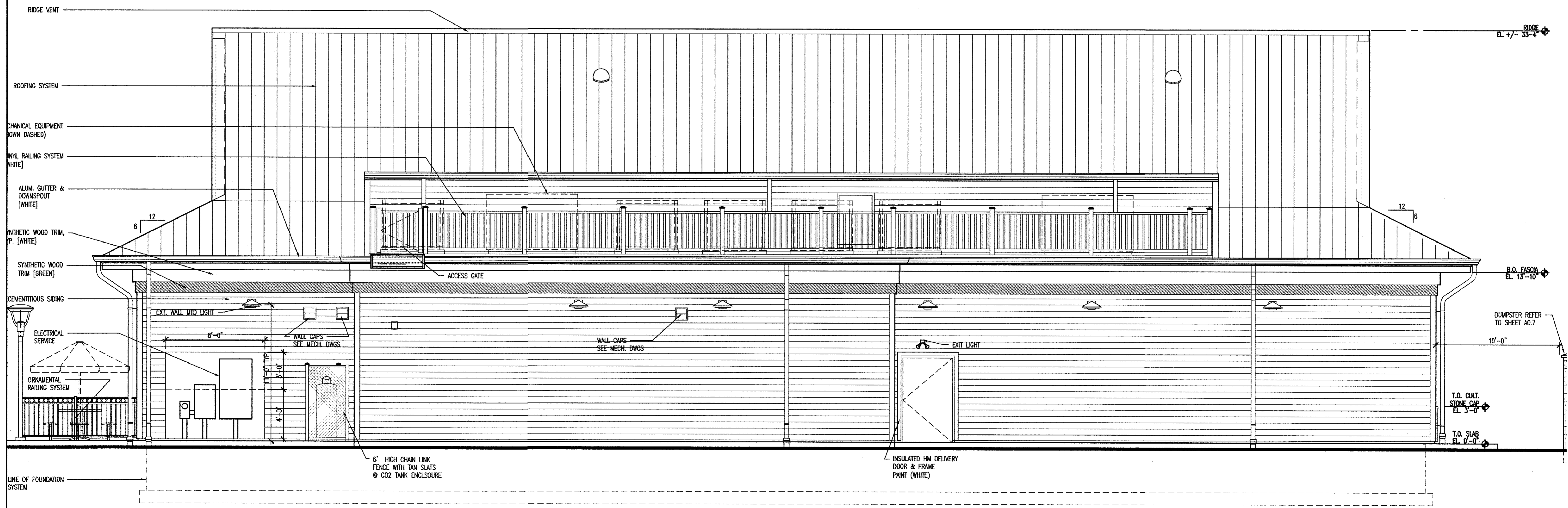
Drawing No.

A3.2

Project No. HJ8142



2 LEFT SIDE ELEVATION
SCALE: 1/4" = 1'-0"



1 REAR ELEVATION
SCALE: 1/4" = 1'-0"