



# Cumberland

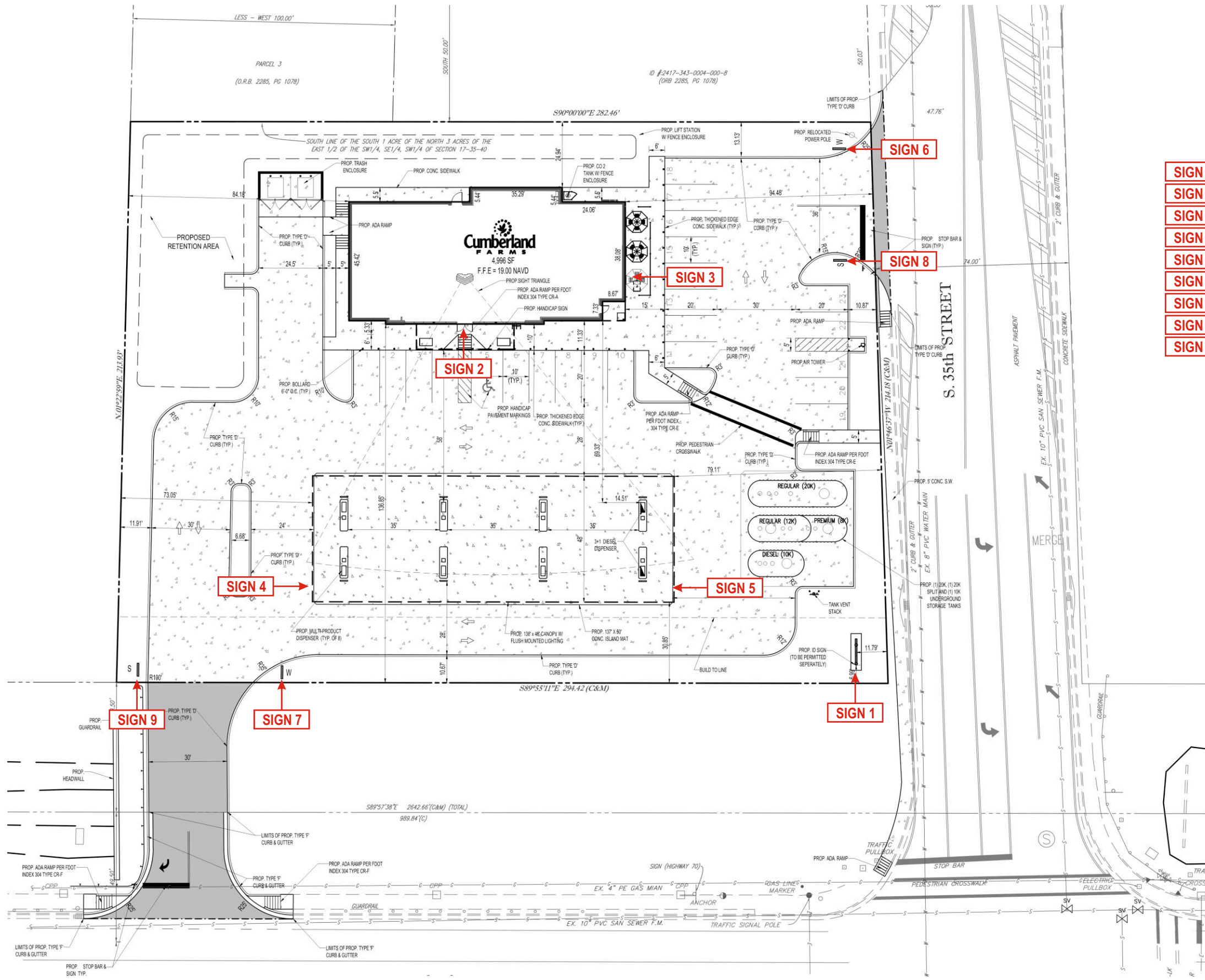
F A R M S

**Loc#: 100044**

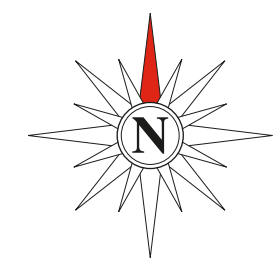
Virginia Ave & 35th Street  
Fort Pierce, FL



We Brand Your  
Places & Spaces



- SIGN 1** MONUMENT
- SIGN 2** CHANNEL LETTERS
- SIGN 3** CHANNEL LETTERS
- SIGN 4** CANOPY SIGN
- SIGN 5** CANOPY SIGN
- SIGN 6** (Welcome) DIRECTIONAL
- SIGN 7** (Welcome) DIRECTIONAL
- SIGN 8** (See You Soon) DIRECTIONAL
- SIGN 9** (See You Soon) DIRECTIONAL



Drawing prepared by:

**SITE PLAN**

Drawing prepared for:

**ICON**  
 Location: Virginia Ave & 35th Street  
 Fort Pierce, FL  
 File Path: Active\ACCOUNTS\C\Cumberland Farms\Project 3295\Locations\3295\_100044\_Fort Pierce\_FL  
 Proj #: 3295  
 Loc #: 100044

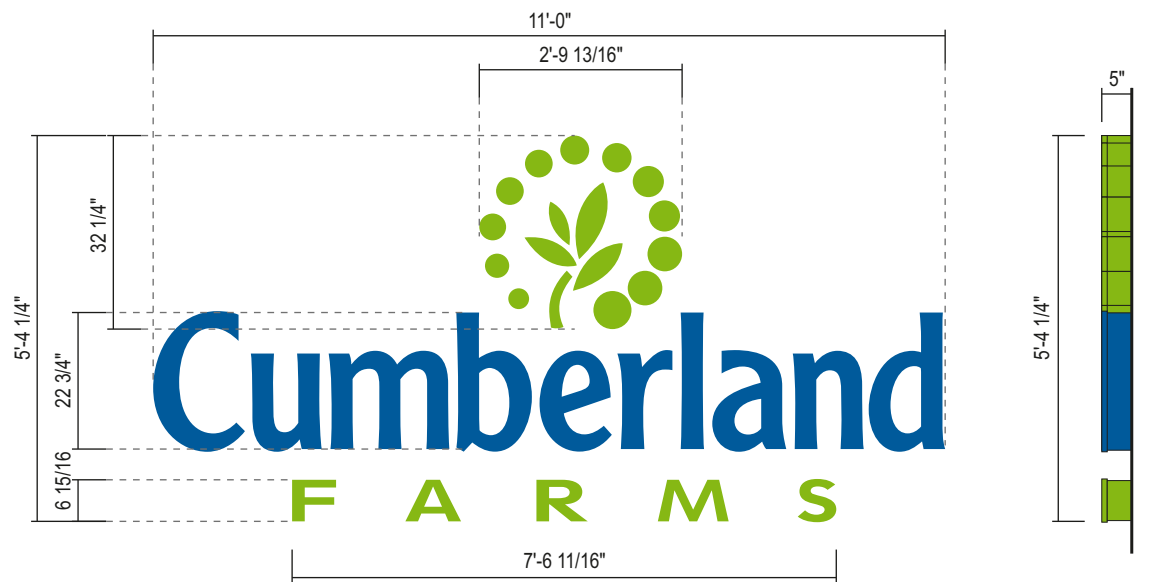


Rev #:	Req#:	Date:	Req. By:	Drawn By:	Revision Description:
Original	223136	11/18/15	FJ	KWK	
Rev 1	000000	00/00/00	XXX	XXX	
Rev 2	000000	00/00/00	XXX	XXX	
Rev 3	000000	00/00/00	XXX	XXX	
Rev 4	000000	00/00/00	XXX	XXX	
Rev 5	000000	00/00/00	XXX	XXX	
Rev 6	000000	00/00/00	XXX	XXX	

Rev #:	Req#:	Date:	Req. By:	Drawn By:	Revision Description:
Rev 7	000000	00/00/00	XXX	XXX	Notes
Rev 8	000000	00/00/00	XXX	XXX	
Rev 9	000000	00/00/00	XXX	XXX	
Rev 10	000000	00/00/00	XXX	XXX	
Rev 11	000000	00/00/00	XXX	XXX	
Rev 12	000000	00/00/00	XXX	XXX	
Rev 13	000000	00/00/00	XXX	XXX	

Drawings are the exclusive property of ICON. Any unauthorized use or duplication is not permitted.

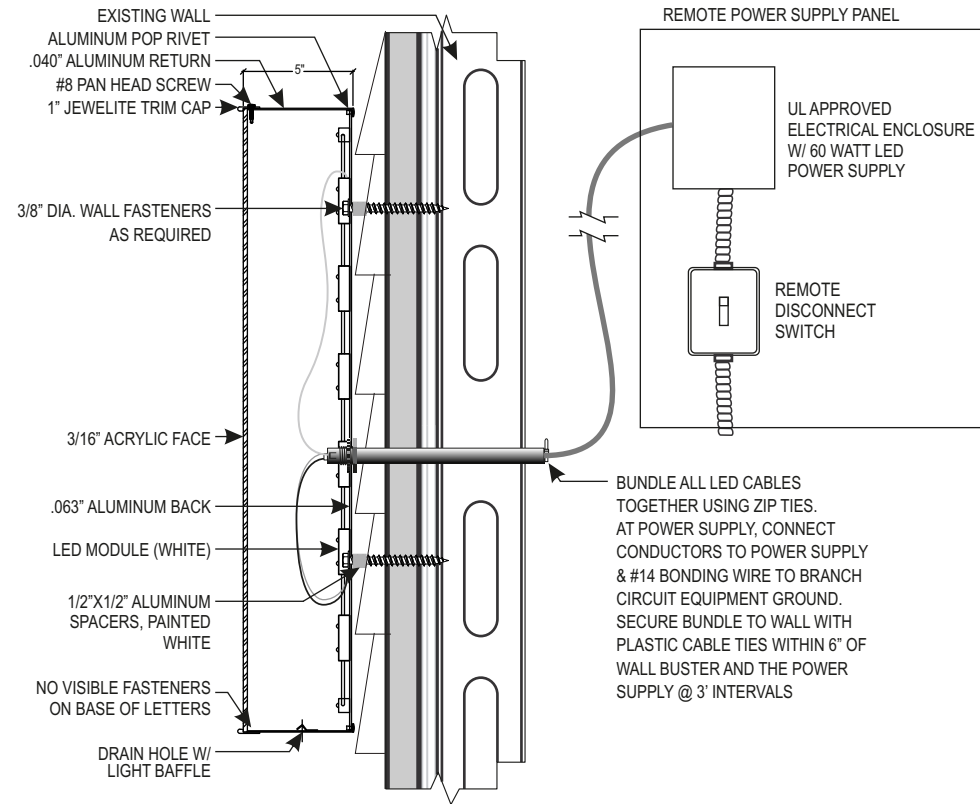




**FRONT GABLE ILLUMINATED CHANNEL LETTER DETAIL - LARGE - ALTERNATE - (58.8 SQ. FT.)**

**SIDE VIEW**  
SCALE: 3/8"=1'-0"

- Aluminum fabricated letter/logo cans. Returns painted to match Blue PMS 301c & Green PMS 376c.
- 3/16" White acrylic faces with 1" blue & green Jewelite trimcap.
- "Cumberland" text to receive blue translucent vinyl overlay - 3M Bristol Blue #3630-97.
- "Logo & FARMS" to receive green translucent vinyl overlay - 3M Brilliant Green #3630-106.
- Internally illuminated with Sloan White LED's.
- Low voltage power supply located behind wall.
- Letters mounted to clapboard siding with non-corrosive hardware / 1/4" stand-offs.
- Access behind fascia system required for secondary sign wiring.
- All holes and seams to be caulked and sealed.
- Sign to be UL labeled.



**REMOTE FLUSH MOUNTED LED CHANNEL LETTER DETAIL**

SCALE: N.T.S.

SIGN BASED ON DESIGN LOADS:  
2010 FLORIDA BUILDING CODE,  
SECTION 16 WIND LOAD.  
RISK CATEGORY II. EXPOSURE C.  
ASCE 7-10, 150 mph.

Electrical Chart			
AMPS:	3	AMPS	
V.A.:	120	VOLTS	WATTS: 360
CIRCUITS:	1-20 amp CIRCUIT		

**GENERAL REQUIREMENTS**

1. ALL LETTER SETS REQUIRE A U.L. LABEL
2. LETTERS TO BE INSTALLED ACCORDING TO NEC AND/OR APPLICABLE LOCAL CODES
3. ELECT. DISCONNECT SWITCH MUST BE PLACED IN DIRECT VIEW OF SIGN
4. USE WHITE SILICONE TO CONCEAL LIGHT LEAKS

SECTION			
<b>ANCHOR TYPE</b>	Ø1/2" SLEEVE ANCHOR (Ø3/8" BOLT), 2" MINIMUM EMBEDMENT	Ø3/8" EXPANSION ANCHOR, 2 1/2" MINIMUM EMBEDMENT	Ø3/8" THREADED ROD w/ALUMINUM OR PVC COMPRESSION SLEEVE
<b>WALL TYPE</b>	CMU, BRICK	PRE-CAST CONCRETE, CONCRETE	EIFS WALL w/ FOAM INSULATION

**MOUNTING OPTIONS**

SCALE: N.T.S.



**FRONT ELEVATION**

105'-3"

SCALE: 1/8"=1'-0"

Drawing prepared by:

**SIGN 2**

Drawing prepared for:

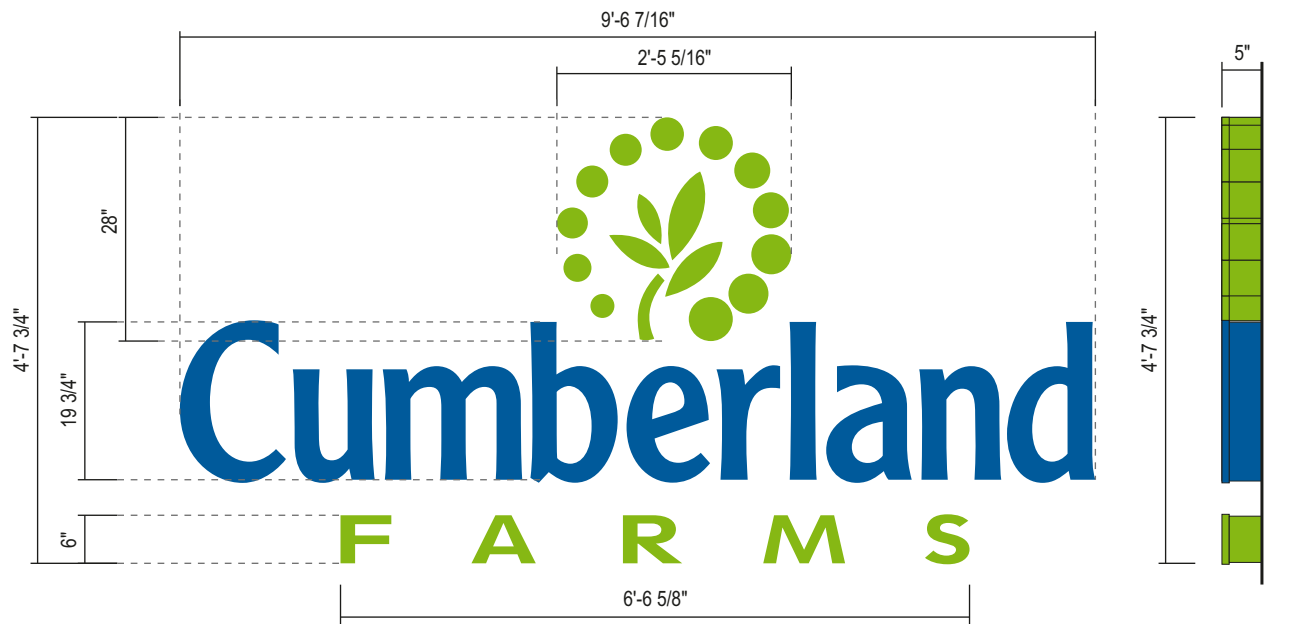


Location: Virginia Ave & 35th Street  
Fort Pierce, FL  
Proj #: 3295  
Loc #: 100044  
File Path: Active\ACCOUNTS\C\Cumberland Farms\Project 3295\Locations\3295\_100044\_Fort Pierce\_FL

Rev #:	Req#:	Date:	Req. By:	Drawn By:	Revision Description:
Original	223136	11/18/15	FJ	KWK	
Rev 1	000000	00/00/00	XXX	XXX	
Rev 2	000000	00/00/00	XXX	XXX	
Rev 3	000000	00/00/00	XXX	XXX	
Rev 4	000000	00/00/00	XXX	XXX	
Rev 5	000000	00/00/00	XXX	XXX	
Rev 6	000000	00/00/00	XXX	XXX	

Rev #:	Req#:	Date:	Req. By:	Drawn By:	Revision Description:
Rev 7	000000	00/00/00	XXX	XXX	
Rev 8	000000	00/00/00	XXX	XXX	
Rev 9	000000	00/00/00	XXX	XXX	
Rev 10	000000	00/00/00	XXX	XXX	
Rev 11	000000	00/00/00	XXX	XXX	
Rev 12	000000	00/00/00	XXX	XXX	
Rev 13	000000	00/00/00	XXX	XXX	

Drawings are the exclusive property of ICON. Any unauthorized use or duplication is not permitted.

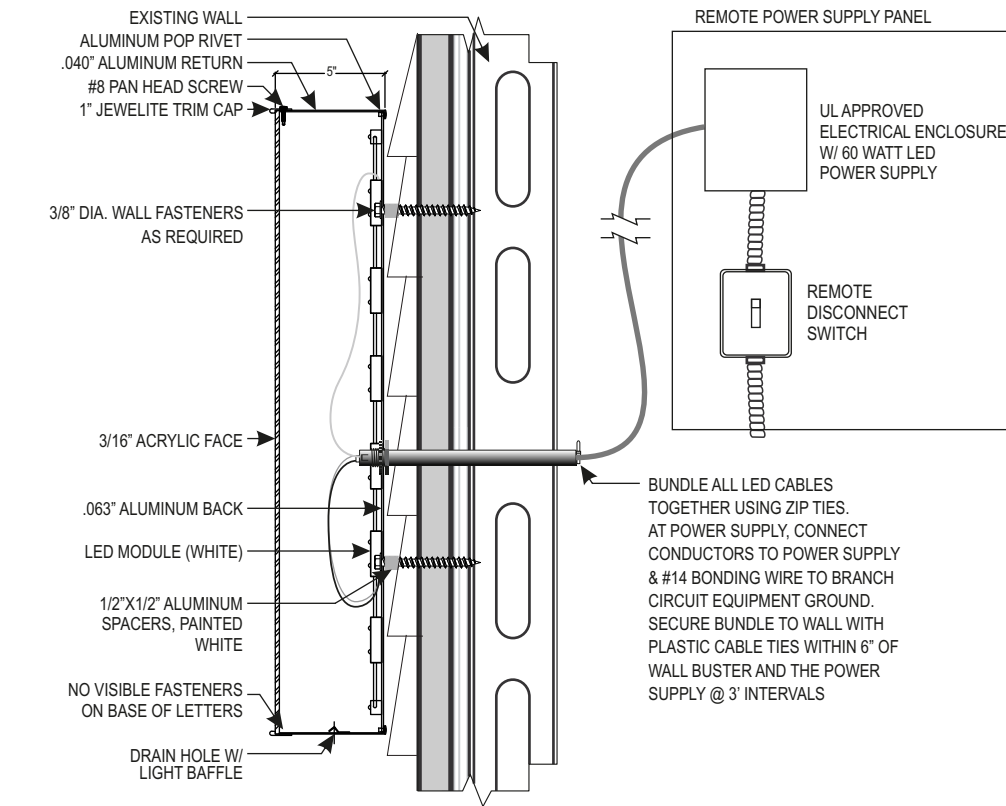


**SIDE GABLE ILLUMINATED CHANNEL LETTER DETAILS - SMALL - ALTERNATE - (44.3 SQ. FT.)**

- Aluminum fabricated letter/logo cans. Returns painted to match Blue PMS 301c & Green PMS 376c.
- 3/16" White acrylic faces with 1" blue & green Jewelite trimcap.
- "Cumberland" text to receive blue translucent vinyl overlay - 3M Bristol Blue #3630-97.
- "Logo & FARMS" to receive green translucent vinyl overlay - 3M Brilliant Green #3630-106.
- Internally illuminated with Sloan White LED's.
- Low voltage power supply located behind wall.
- Letters mounted to clapboard siding with non-corrosive hardware / 1/4" stand-offs.
- Access behind fascia system required for secondary sign wiring.
- All holes and seams to be caulked and sealed.
- Sign to be UL labeled.

**SIDE VIEW**

SCALE: 1/2"=1'-0"



**REMOTE FLUSH MOUNTED LED CHANNEL LETTER DETAIL**

SCALE: N.T.S.

SIGN BASED ON DESIGN LOADS:  
2010 FLORIDA BUILDING CODE,  
SECTION 16 WIND LOAD.  
RISK CATEGORY II. EXPOSURE C.  
ASCE 7-10, 150 mph.

Electrical Chart			
AMPS:	3	AMPS	
V.A.:	120	VOLTS	WATTS: 360
CIRCUITS:	1-20 amp CIRCUIT		

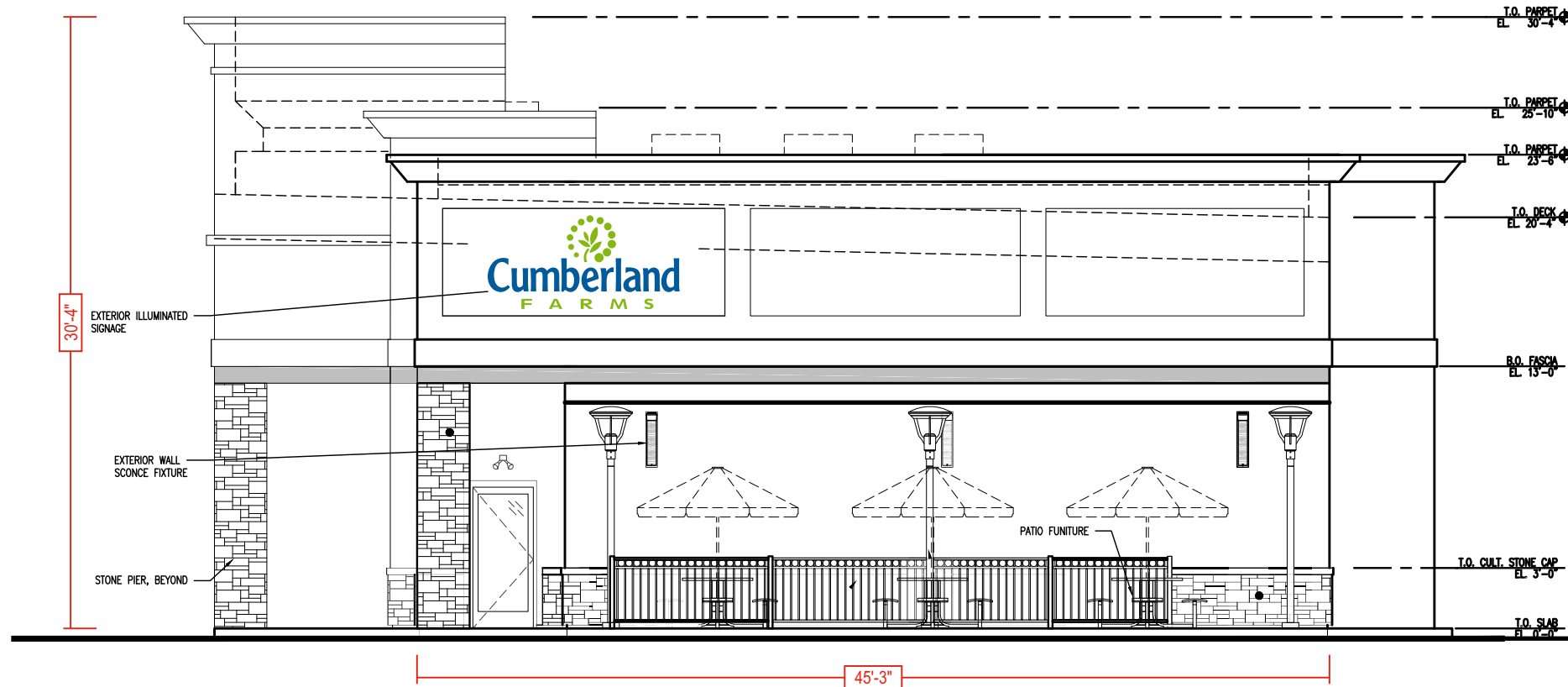
**GENERAL REQUIREMENTS**

1. ALL LETTER SETS REQUIRE A U.L. LABEL
2. LETTERS TO BE INSTALLED ACCORDING TO NEC AND/OR APPLICABLE LOCAL CODES
3. ELECT. DISCONNECT SWITCH MUST BE PLACED IN DIRECT VIEW OF SIGN
4. USE WHITE SILICONE TO CONCEAL LIGHT LEAKS

SECTION			
<b>ANCHOR TYPE</b>	Ø1/2" SLEEVE ANCHOR (Ø3/8" BOLT), 2" MINIMUM EMBEDMENT	Ø3/8" EXPANSION ANCHOR, 2 1/2" MINIMUM EMBEDMENT	Ø3/8" THREADED ROD w/ALUMINUM OR PVC COMPRESSION SLEEVE
<b>WALL TYPE</b>	CMU, BRICK	PRE-CAST CONCRETE, CONCRETE	EIFS WALL w/ FOAM INSULATION

**MOUNTING OPTIONS**

SCALE: N.T.S.



**RIGHT SIDE ELEVATION**

SCALE: 1/8"=1'-0"

Drawing prepared by:

**SIGN 3**

Drawing prepared for:



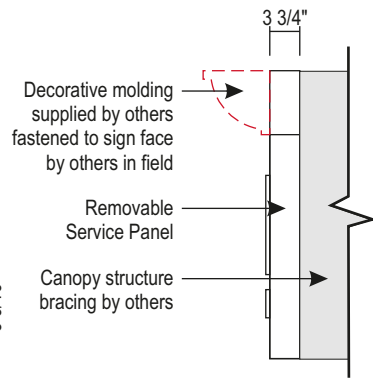
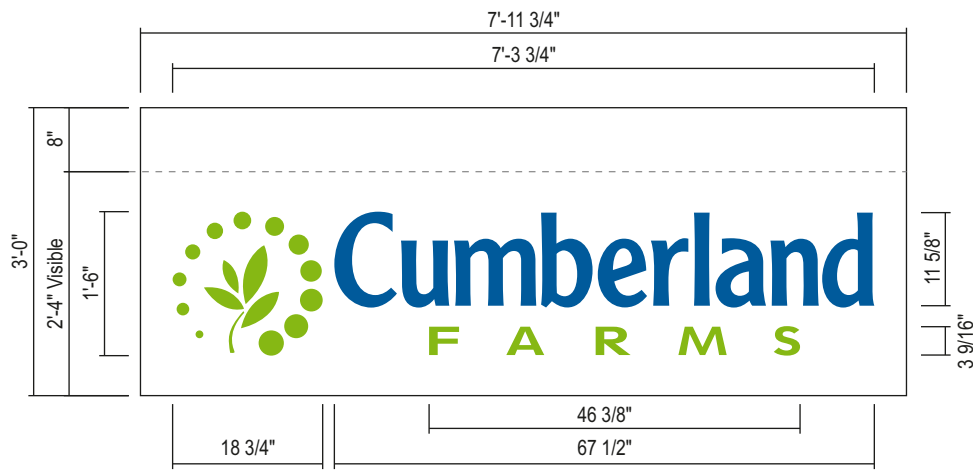
Location: Virginia Ave & 35th Street  
Fort Pierce, FL  
Proj #: 3295  
Loc #: 100044  
File Path: Active\ACCOUNTS\C\Cumberland Farms\Project 3295\Locations\3295\_100044\_Fort Pierce\_FL

Rev #:	Req#:	Date:	Req. By:	Drawn By:	Revision Description:
Original	223136	11/18/15	FJ	KWK	
Rev 1	000000	00/00/00	XXX	XXX	
Rev 2	000000	00/00/00	XXX	XXX	
Rev 3	000000	00/00/00	XXX	XXX	
Rev 4	000000	00/00/00	XXX	XXX	
Rev 5	000000	00/00/00	XXX	XXX	
Rev 6	000000	00/00/00	XXX	XXX	

Rev #:	Req#:	Date:	Req. By:	Drawn By:	Revision Description:
Rev 7	000000	00/00/00	XXX	XXX	Notes
Rev 8	000000	00/00/00	XXX	XXX	
Rev 9	000000	00/00/00	XXX	XXX	
Rev 10	000000	00/00/00	XXX	XXX	
Rev 11	000000	00/00/00	XXX	XXX	
Rev 12	000000	00/00/00	XXX	XXX	
Rev 13	000000	00/00/00	XXX	XXX	

Drawings are the exclusive property of ICON. Any unauthorized use or duplication is not permitted.





**ILLUMINATED CANOPY SIGN - LEFT - (18.62 Visible Sq. Ft.)**

**Side View**

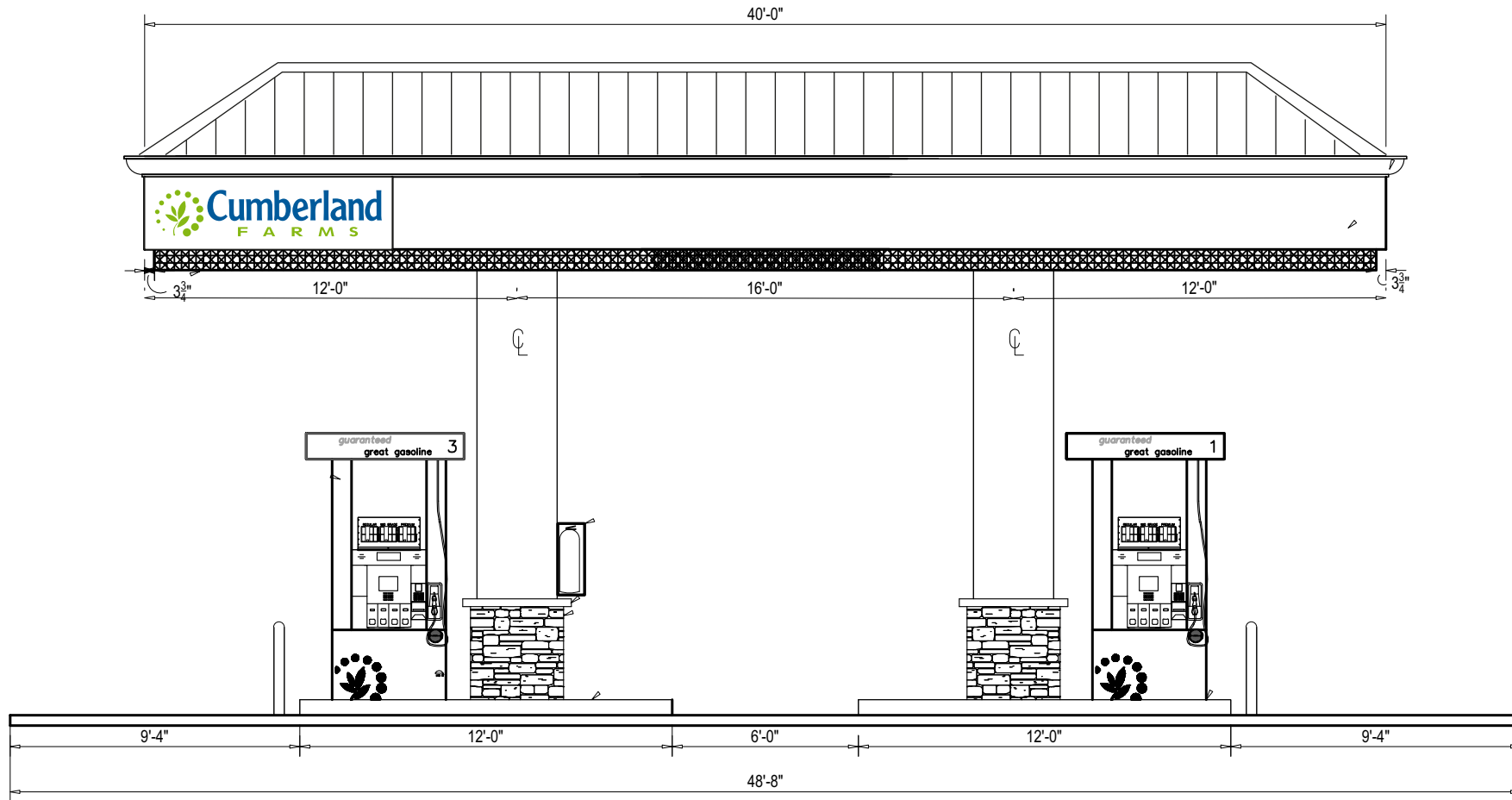
**CLOSE UP DETAIL**

- Router Cut 1/8" **Alcoa-Shell White** Aluminum Face
- 3/4" Clear Acrylic Push Thru (1/2" ± Exposed) "Cumberland Farms"
- Text & Logo Attached with stud welded fastening to Rear of Aluminum Face
- Main Text ("Cumberland")** to be Laminated w/ 3M™ Scotchcal™ Translucent Graphic Film **3630-97 Bristol Blue**
- Logo & Sub Text ("Farms")** to be Laminated w/ 3M™ Scotchcal™ Translucent Graphic Film **3630-106 Brilliant Green**
- Internal White Led Illumination mounted to Slide Out "Service Tray"
- 60 Watt Power Supply Mounted to "Service Tray" Near Access Door
- Service Switch & (4) Drain Holes
- Sign to Mount To Canopy Fascia using non-corrosive hardware
- All existing holes & seams to be caulked and sealed
- Sign to be UL labled

SCALE: 1/2"=1'-0"

SCALE: 1/4"=1'-0"

DESIGN LOADS:  
150 MPH WIND LOAD  
RISK CATEGORY II, EXPOSURE C.  
2014 FLORIDA BUILDING CODE  
SECTION 16 WIND LOAD  
ASCE 7-10



**CANOPY RIGHT SIDE ELEVATION**

SCALE: 3/16"=1'-0"

Drawing prepared by:

**SIGN 5**

Drawing prepared for:



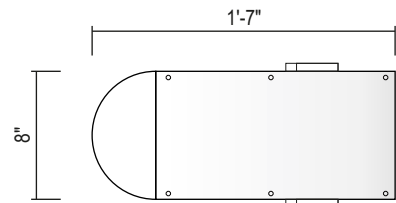
Location: Virginia Ave & 35th Street  
Fort Pierce, FL  
Proj #: 3295  
Loc #: 100044  
File Path: Active\ACCOUNTS\C\Cumberland Farms\Project 3295\Locations\3295\_100044\_Fort Pierce\_FL



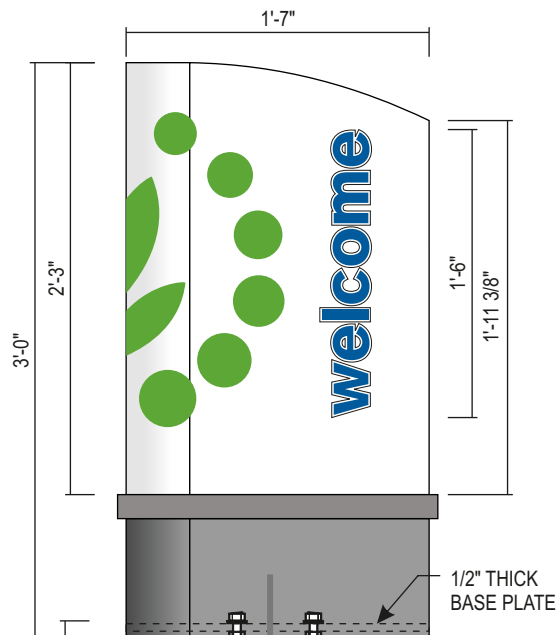
Rev #:	Req#:	Date:	Req. By:	Drawn By:	Revision Description:
Original	223136	11/18/15	FJ	KWK	
Rev 1	000000	00/00/00	XXX	XXX	
Rev 2	000000	00/00/00	XXX	XXX	
Rev 3	000000	00/00/00	XXX	XXX	
Rev 4	000000	00/00/00	XXX	XXX	
Rev 5	000000	00/00/00	XXX	XXX	
Rev 6	000000	00/00/00	XXX	XXX	

Rev #:	Req#:	Date:	Req. By:	Drawn By:	Revision Description:
Rev 7	000000	00/00/00	XXX	XXX	Notes
Rev 8	000000	00/00/00	XXX	XXX	
Rev 9	000000	00/00/00	XXX	XXX	
Rev 10	000000	00/00/00	XXX	XXX	
Rev 11	000000	00/00/00	XXX	XXX	
Rev 12	000000	00/00/00	XXX	XXX	
Rev 13	000000	00/00/00	XXX	XXX	

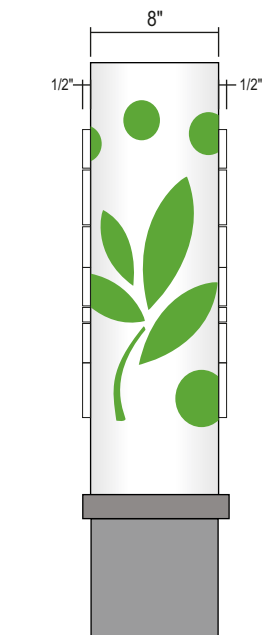
Drawings are the exclusive property of ICON. Any unauthorized use or duplication is not permitted.



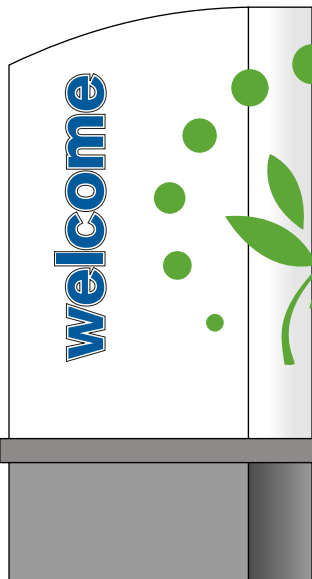
Top View



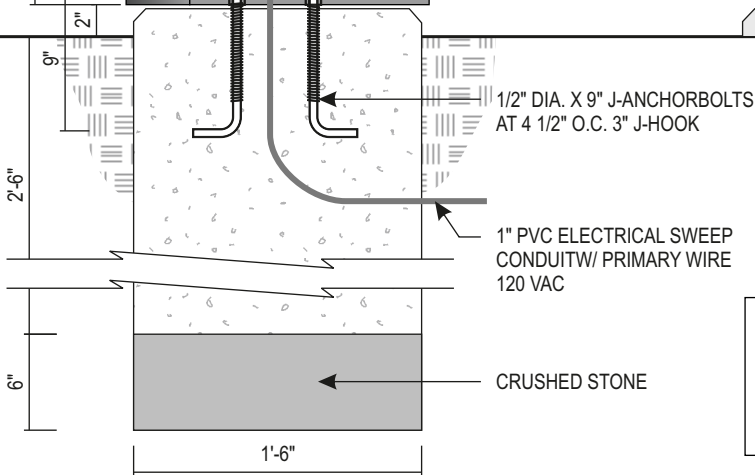
Front View



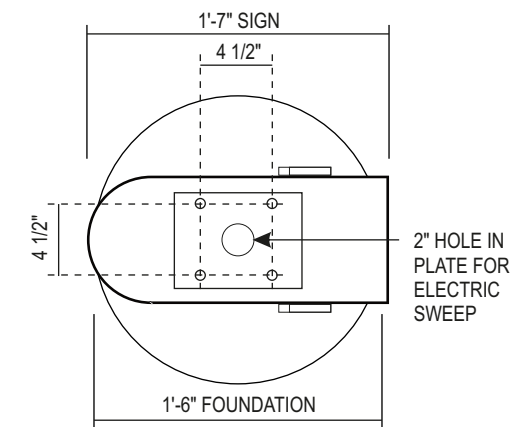
Side View



Opposite View

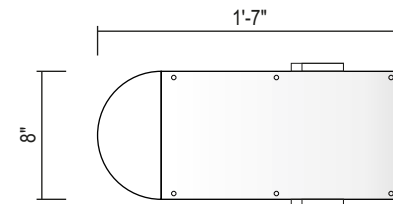


DESIGN LOADS:  
150 MPH WIND LOAD  
RISK CATEGORY II, EXPOSURE C.  
2014 FLORIDA BUILDING CODE  
SECTION 16 WIND LOAD  
ASCE 7-10

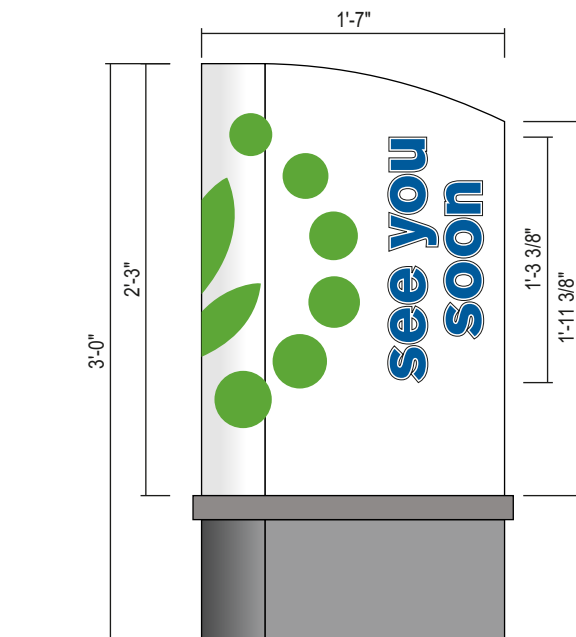


FOOTING DETAIL

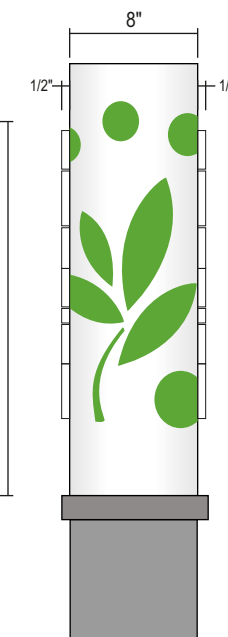
SCALE: 1"=1'-0"



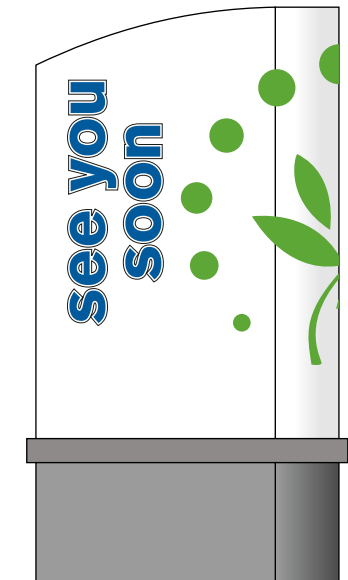
Top View



Front View



Side View



Opposite View

**SIGN 8, 9**

D.F. ILLUMINATED "SEE YOU SOON" DIRECTIONAL - (4.75 SQ. FT.)

QTY: 2

SCALE: 1"=1'-0"

**GENERAL NOTES**

- 8" Deep aluminum fabricated sign cabinet with single radius end.
- Painted Alcoa shell white and medium grey.
- Removable service panel at top w/countersunk screws.
- .125" routed sign face w/1/2" white acrylic push-thru text.
- Text to have first surface applied 3M™ Scotchcal™ Translucent Graphic Film 3630-97 Bristol Blue w/1/8" inline.
- Aluminum face to have 3M™ Controltac™ Opaque Graphic Film 180C-196 Apple Green (**Pending approval**) logo first surface applied, and to wrap around radius.
- Internally illuminated with Sloan White LED's. (Text only).
- Internal 1/4" aluminum mounting plate across bottom of base cover.
- Sign to be UL labeled.

**SIGN 6, 7**

D.F. ILLUMINATED "WELCOME" DIRECTIONAL - (4.75 SQ. FT.) - (3.5 SQ. FT. Sign Area)

QTY: 2

SCALE: 1"=1'-0"

Drawing prepared by:

**SIGN 6 - 9**

Drawing prepared for:



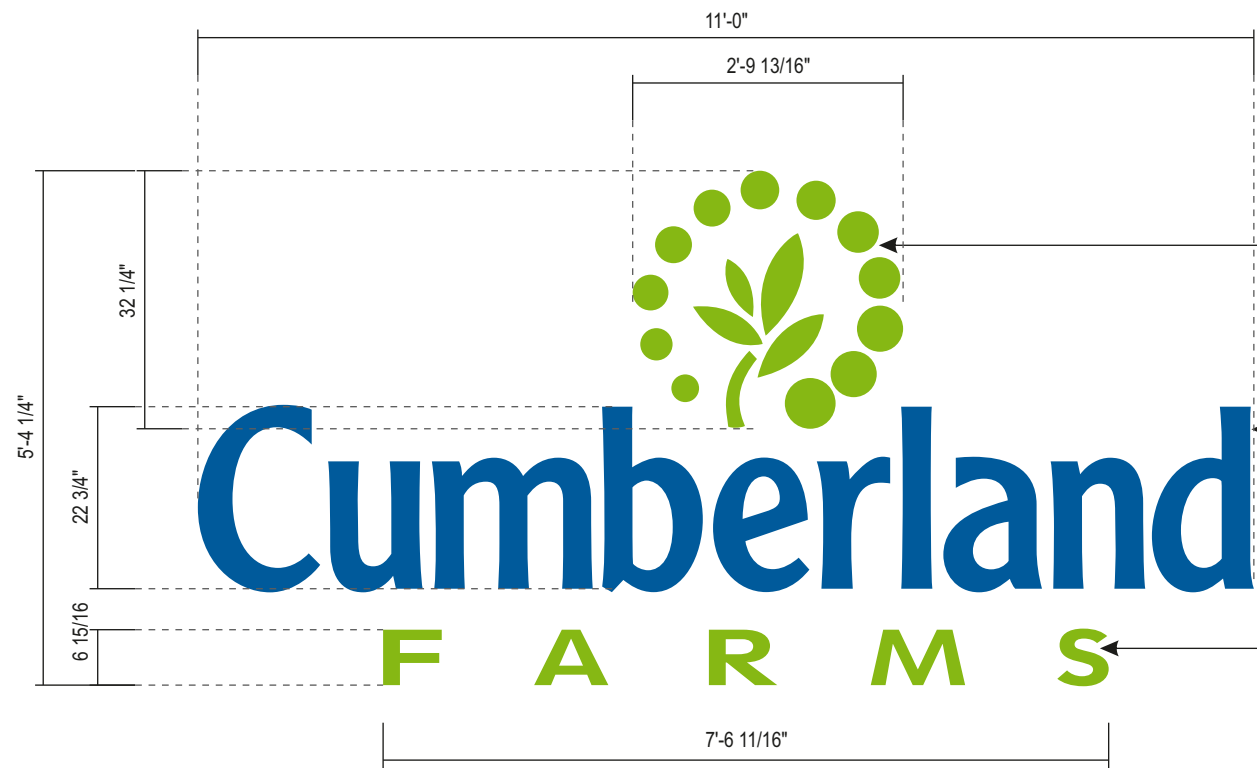
Location: Virginia Ave & 35th Street  
Fort Pierce, FL  
Proj #: 3295  
Loc #: 100044  
File Path: Active\ACCOUNTS\C\Cumberland Farms\Project 3295\Locations\3295\_100044\_Fort Pierce\_FL



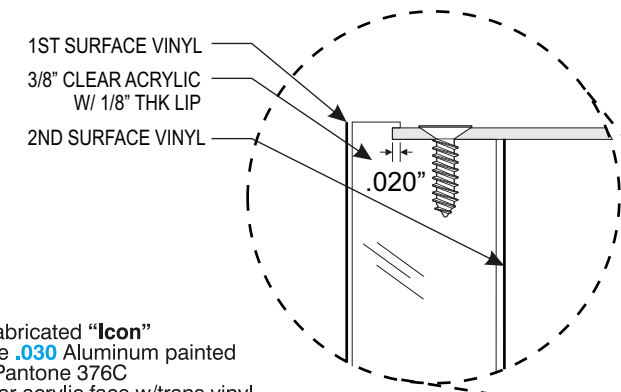
Rev #:	Req#:	Date:	Req. By:	Drawn By:	Revision Description:
Original	223136	11/18/15	FJ	KWK	
Rev 1	000000	00/00/00	XXX	XXX	
Rev 2	000000	00/00/00	XXX	XXX	
Rev 3	000000	00/00/00	XXX	XXX	
Rev 4	000000	00/00/00	XXX	XXX	
Rev 5	000000	00/00/00	XXX	XXX	
Rev 6	000000	00/00/00	XXX	XXX	

Rev #:	Req#:	Date:	Req. By:	Drawn By:	Revision Description:
Rev 7	000000	00/00/00	XXX	XXX	Notes
Rev 8	000000	00/00/00	XXX	XXX	
Rev 9	000000	00/00/00	XXX	XXX	
Rev 10	000000	00/00/00	XXX	XXX	
Rev 11	000000	00/00/00	XXX	XXX	
Rev 12	000000	00/00/00	XXX	XXX	
Rev 13	000000	00/00/00	XXX	XXX	

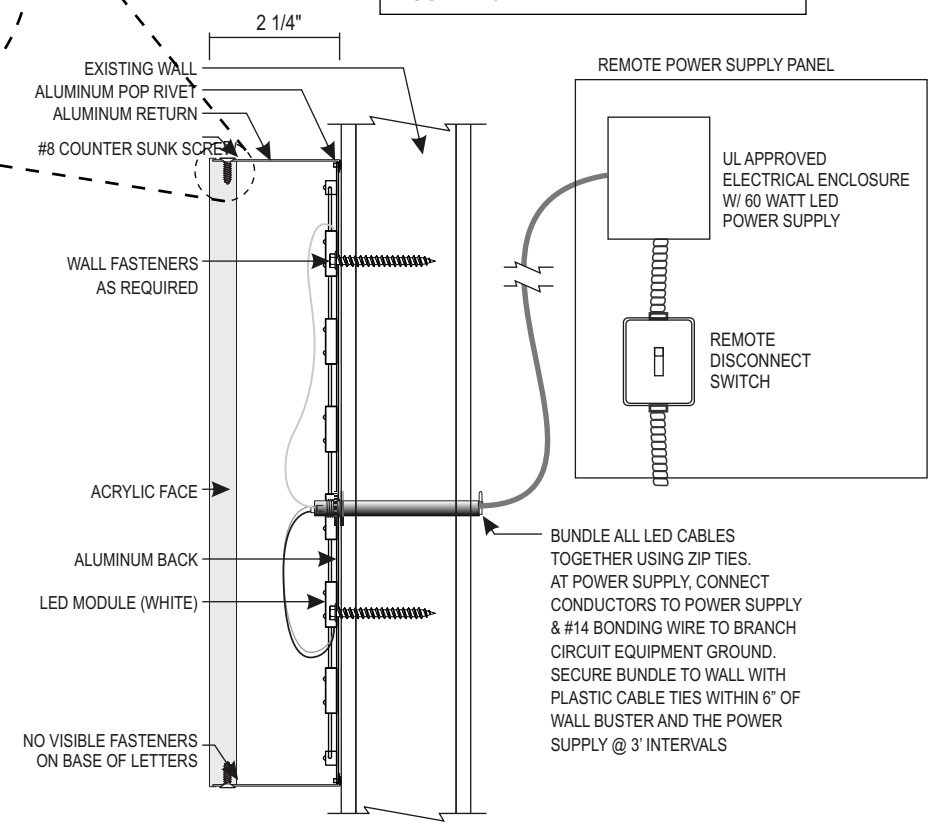
Drawings are the exclusive property of ICON. Any unauthorized use or duplication is not permitted.



- 2 1/4" deep fabricated "Icon"  
- Returns to be .030 Aluminum painted to match Pantone 376C  
- 3/8" thick clear acrylic face w/trans vinyl  
**3M 3630-106 Brilliant Green** applied to 1st & 2nd surfaces
- 2 1/4" deep fabricated "Cumberland" letters  
- Returns to be .040 Aluminum painted to match Pantone 301C  
- 3/8" thick clear acrylic face w/trans vinyl  
**3M 3630-97 Bristol Blue** applied to 1st & 2nd surfaces
- 2 1/4" deep fabricated "FARMS" letters  
- Returns to be .030 Aluminum painted to match Pantone 376C  
- 3/8" thick clear acrylic face w/trans vinyl  
**3M 3630-106 Brilliant Green** applied to 1st & 2nd surfaces



DESIGN LOADS:  
136 MPH WIND LOAD  
RISK CATEGORY II, EXPOSURE C.  
2014 FLORIDA BUILDING CODE  
SECTION 16 WIND LOAD  
ASCE 7-10



**INTERIOR LOW PROFILE ILLUMINATED CHANNEL LETTERS - (58.8 SQ. FT)**

QTY: 1

SCALE: 1/2"=1'-0"

**REMOTE FLUSH MOUNTED LED CHANNEL LETTER DETAIL**

SCALE: N.T.S.

Drawing prepared by: **Interior Illum. Channel Letters**

Location: Virginia Ave & 35th Street, Fort Pierce, FL  
 Proj #: 3295  
 Loc #: 100044  
 File Path: Active\ACCOUNTS\C\Cumberland Farms\Project 3295\Locations\3295\_100044\_Fort Pierce\_FL

Drawing prepared for: **Cumberland FARMS**

Rev #:	Req#:	Date:	Req. By:	Drawn By:	Revision Description:
Original	223136	11/18/15	FJ	KWK	
Rev 1	000000	00/00/00	XXX	XXX	
Rev 2	000000	00/00/00	XXX	XXX	
Rev 3	000000	00/00/00	XXX	XXX	
Rev 4	000000	00/00/00	XXX	XXX	
Rev 5	000000	00/00/00	XXX	XXX	
Rev 6	000000	00/00/00	XXX	XXX	

Rev #:	Req#:	Date:	Req. By:	Drawn By:	Revision Description:
Rev 7	000000	00/00/00	XXX	XXX	Notes
Rev 8	000000	00/00/00	XXX	XXX	
Rev 9	000000	00/00/00	XXX	XXX	
Rev 10	000000	00/00/00	XXX	XXX	
Rev 11	000000	00/00/00	XXX	XXX	
Rev 12	000000	00/00/00	XXX	XXX	
Rev 13	000000	00/00/00	XXX	XXX	

Drawings are the exclusive property of ICON. Any unauthorized use or duplication is not permitted.