

# PARKING COMMITTEE



# PARKING COMMITTEE



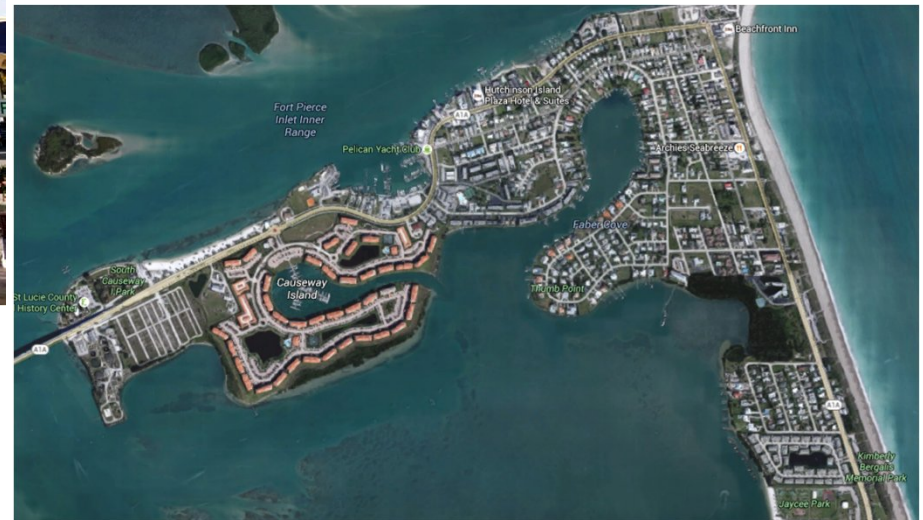
- \* City Commission
- \* City Manager's Office
- \* Police Department
- \* Engineering Department
- \* Planning Department
- \* Public Works Department
- \* Main Street Fort Pierce
- \* Contributors from the Business Community

# PARKING COMMITTEE



DOWNTOWN

BEACH



# PARKING COMMITTEE RECOMMENDATIONS



301 South Ocean Drive

0.68 Acres

115' x 245'

Directly across from  
St. Lucie Court Beach  
Access



# PARKING COMMITTEE RECOMMENDATIONS

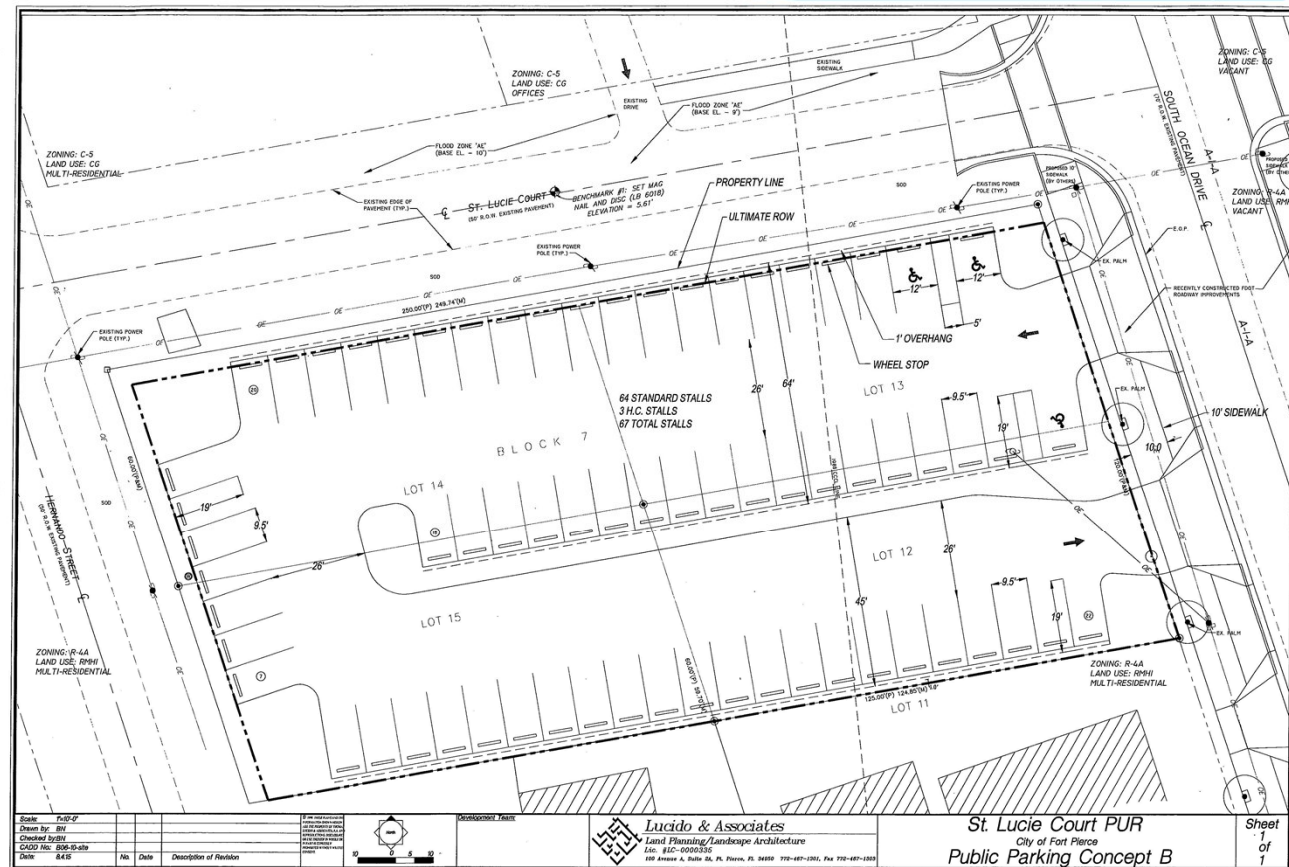


301 South Ocean Drive

0.68 Acres

115' x 245'

Typical Surface  
Parking Improvement



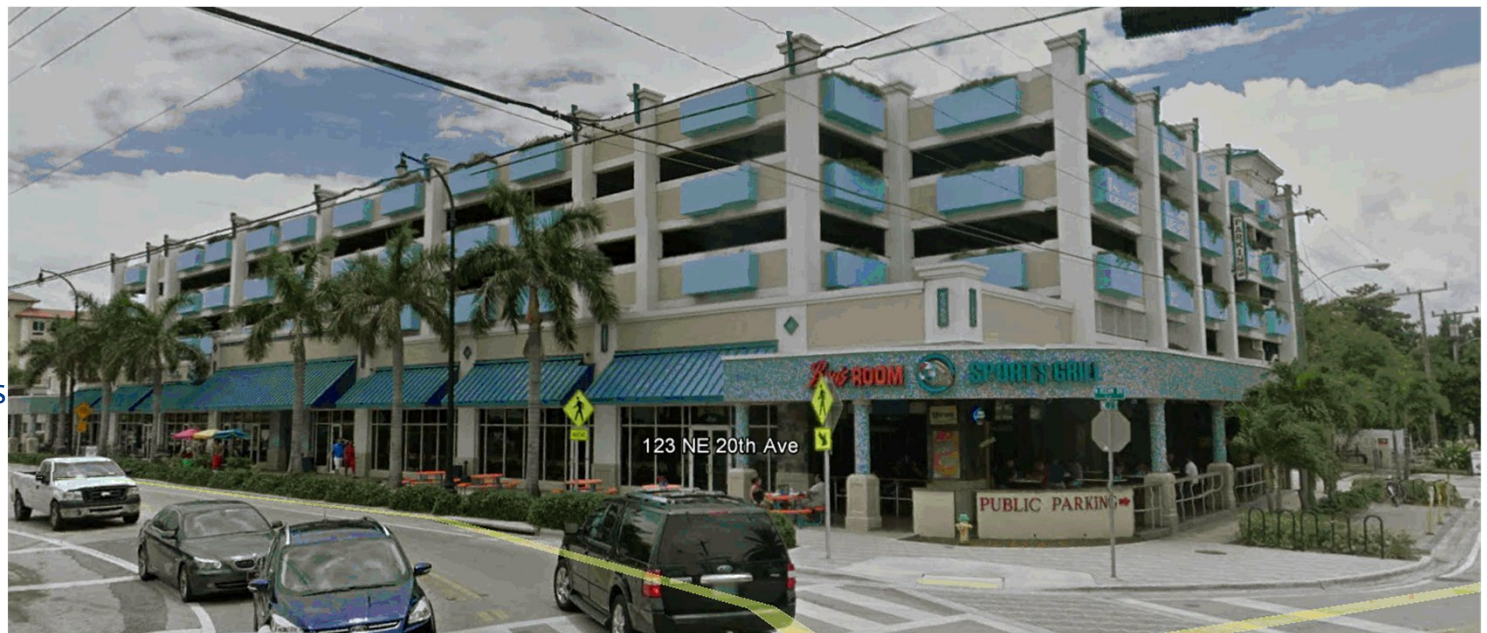
# PARKING COMMITTEE RECOMMENDATIONS



Economic Development  
Example

Deerfield Beachplace  
128' x 260'  
800' to beach access

360+ Parking Spaces  
7 Retail Establishments



# PARKING COMMITTEE RECOMMENDATIONS



- \* Increase the payment in lieu of parking fees from their present values of \$2,000 per space to a more significant amount equal to current construction and acquisition costs.



# PARKING COMMITTEE RECOMMENDATIONS



- \* Examine capital and maintenance improvements funded by business improvement district fees or non-ad valorem assessments levied through specified municipal service benefit unit programs.

A graphic consisting of two overlapping arrows pointing right. The top arrow is blue and the bottom arrow is white. The text "Public-Private Partnerships" is written across the arrows, with "Public-Private" in white and "Partnerships" in red.

Public-Private  
Partnerships

# PARKING COMMITTEE RECOMMENDATIONS



- \* Place paid parking along streets accompanied by parking enforcement. Paid parking spaces in highly visible and highly desirable on-street areas to promote parking in designated free public parking locations.



# PARKING COMMITTEE RECOMMENDATIONS



- \* Consider the vertical expansion of the Saint Lucie County parking garage located at the intersection of North 2nd Street and Boston Avenue



# PARKING COMMITTEE RECOMMENDATIONS



- \* Support private sector efforts for localized transportation



# PARKING COMMITTEE RECOMMENDATIONS



- \* Improve lighting and security of the City Hall parking garage to attract additional users to utilize this facility. This may also be accomplished by incorporating artwork and strategically placed lighting throughout garage area.



# PARKING COMMITTEE RECOMMENDATIONS



- \* Mandate City Hall and downtown employee parking on restricted levels of the City Hall parking garage



# PARKING COMMITTEE RECOMMENDATIONS



- \* Improve parking configuration beneath the South Bridge to incorporate additional lighting and painted murals to generate a comfortable, and secure parking area



THE END

