

FLORIDA DRAFTING & DESIGN
 RESIDENTIAL DRAFTING & DESIGN
 23 HARBOUR ISLE DRIVE WEST, #PH5
 HUTCHINSON ISLAND, FLORIDA 34949
 (772) 200-8670

COPYRIGHT © 2015
 FLORIDA DRAFTING & DESIGN
 ALL RIGHTS RESERVED. THIS DOCUMENT
 OR PARTS THEREOF, MAY NOT BE REPRODUCED
 IN ANY FORM WITHOUT PERMISSION.

REVISION DATE

DATE 11-16-15 SCALE 1/4" = 1'-0"

EXISTING FLOOR PLAN & SITE PLAN CONDITIONS:

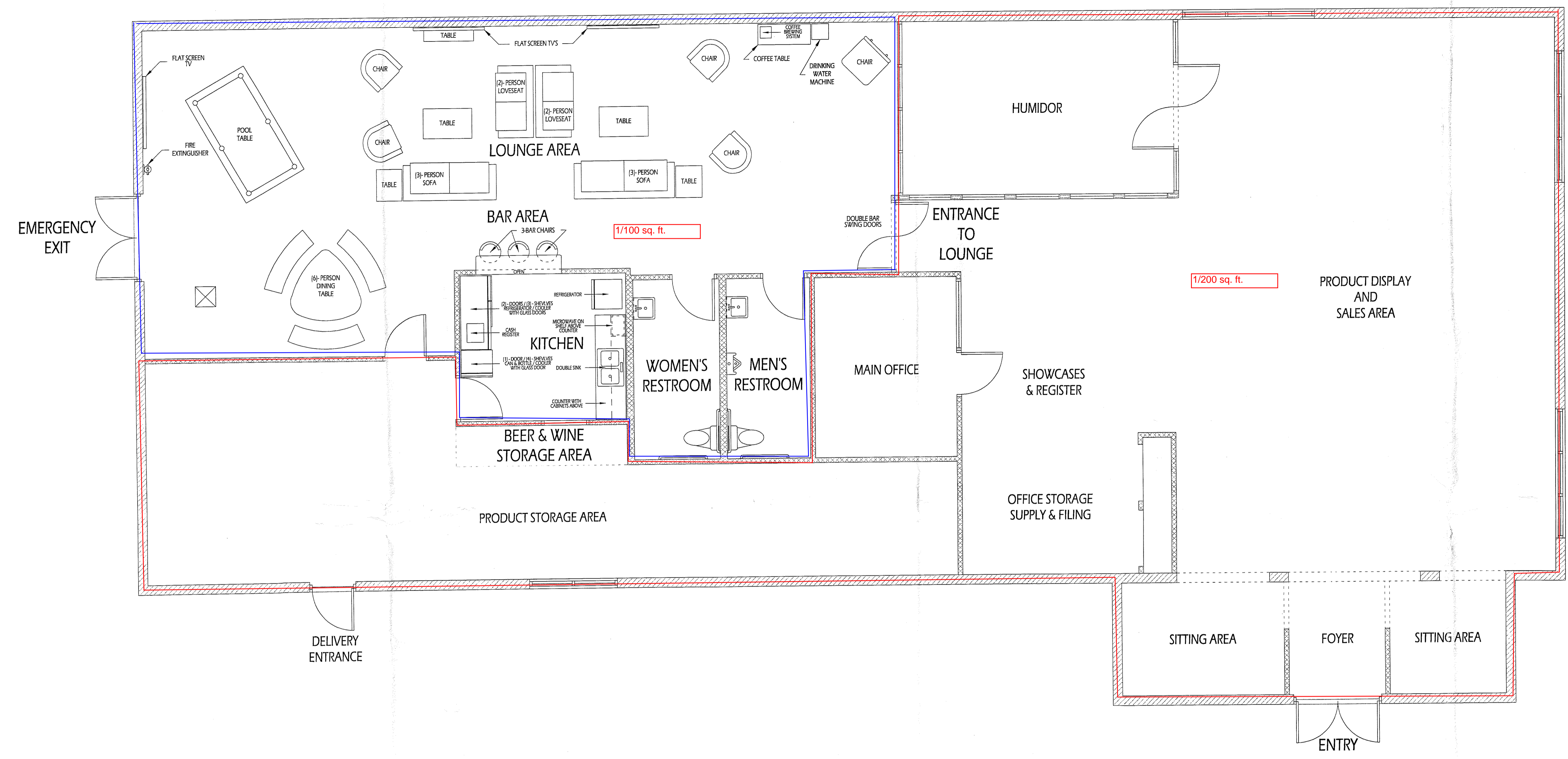
SC MS SMOKE SHOP

1001 SOUTH US HIGHWAY 1
 FORT PIERCE, FLORIDA 34950
 SAINT LUCIE COUNTY

TOTAL SC MS SMOKE SHOP AREA
 4,282 SQ/FT

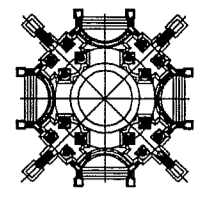
TOTAL KITCHEN, BAR, LOUNGE,
 WOMEN'S & MEN'S RESTROOM
 AREAS:
 1,396 SQ/FT

EXISTING
 FLOOR PLAN



EXISTING FLOOR PLAN

EXISTING SQUARE FOOTAGE BY ROOM/AREA	
KITCHEN =	129 SQUARE FEET
BAR AREA & LOUNGE =	1,100 SQUARE FEET
BEER & WINE STORAGE AREA =	34 SQUARE FEET
WOMEN'S RESTROOM =	85 SQUARE FEET
MEN'S RESTROOM =	82 SQUARE FEET
TOTAL =	1,430 SQUARE FEET

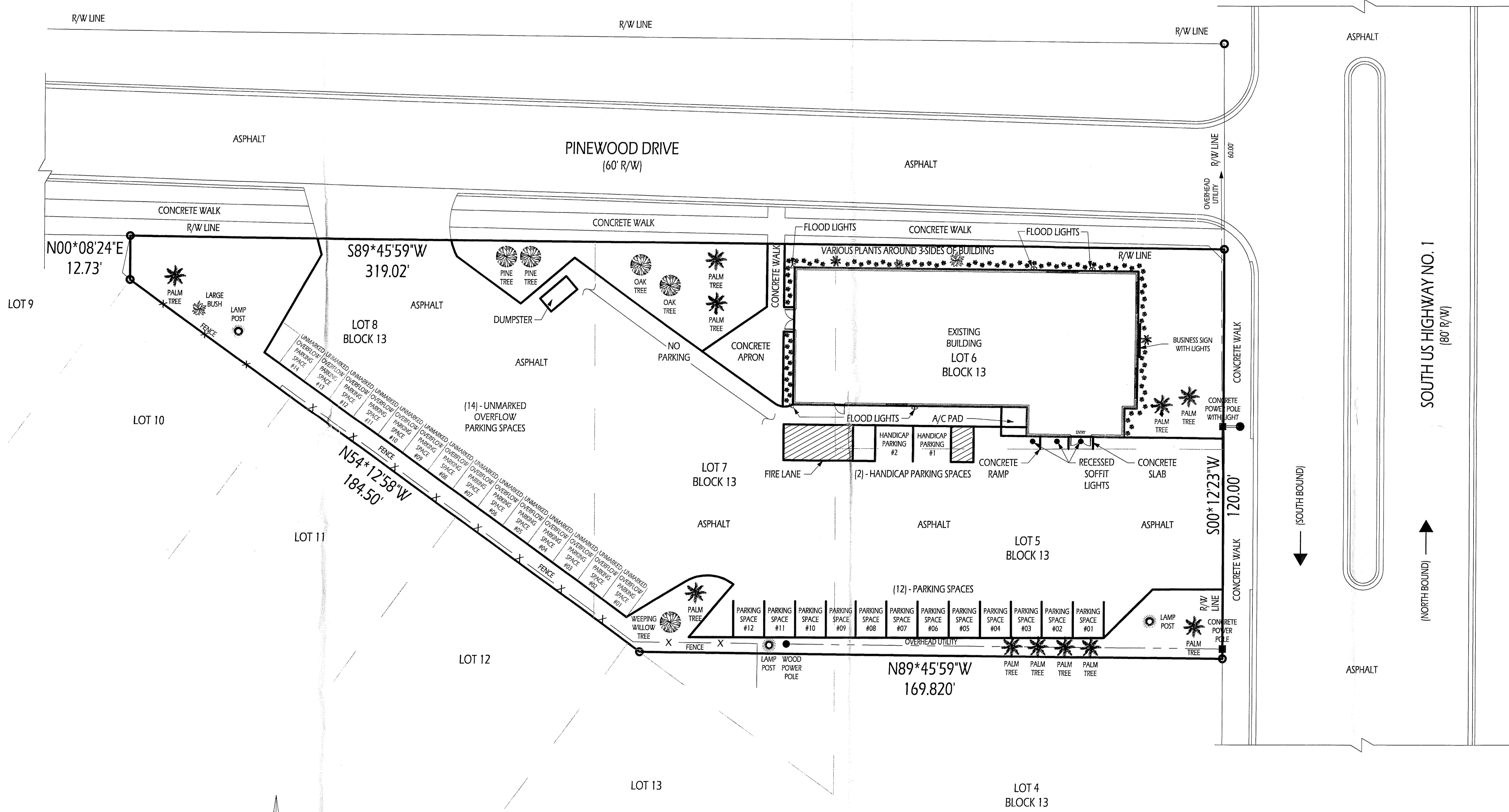


FLORIDA DRAFTING & DESIGN
 RESIDENTIAL DRAFTING & DESIGN
 23 HARBOUR ISLE DRIVE, WEST, #PH5
 HUTCHINSON ISLAND, FLORIDA 34949
 (772) 209-8670

COPYRIGHT © 2015
 FLORIDA DRAFTING & DESIGN
 ALL RIGHTS RESERVED. THIS DOCUMENT
 OR PARTS THEREOF, MAY NOT BE REPRODUCED
 IN ANY FORM WITHOUT PERMISSION.

REVISION DATE

DATE: 11-16-15
 SCALE: 1/16" = 1'-0"



EXISTING FLOOR PLAN & SITE PLAN CONDITIONS:
SC MS SMOKE SHOP
 1001 SOUTH US HIGHWAY 1
 FORT PIERCE, FLORIDA 34950
 SAINT LUCIE COUNTY

TOTAL SC MS SMOKE SHOP AREA
 4,282 SQ/FT

TOTAL KITCHEN, BAR, LOUNGE,
 WOMEN'S & MEN'S RESTROOM
 AREAS:
 1,396 SQ/FT

EXISTING
 SITE PLAN

EXISTING SITE PLAN