

CRAIG A. SCHNEIDER, AIA
ARCHITECT
 1756 East Sunshine, Suite 417
 Springfield, Missouri 65804
 e-mail: architect@esterlyschneider.com
 417.862.0558
 Fax: 417.862.3265

New O'Reilly Auto Parts Store:
 S. U.S. HWY 1
 FORT PIERCE, FL

O'Reilly AUTO PARTS
 233 SOUTH PATTERSON
 SPRINGFIELD, MISSOURI 65802
 417-862-2674 PHONE

SYMBOLS LEGEND

REFER TO SURVEY FOR EXISTING CONDITION SYMBOLS LEGEND

- PROPERTY LINE
- LANDSCAPE BUFFER
- AREA OF CONCRETE
- SIGN
- NEW LIGHT POLE LOCATION
- NEW SIGN LOCATION

KEY NOTES

- 1 PROPERTY LINE
- 2 EXISTING OVERHEAD POWER/UTILITY LINES
- 3 ALL DISTURBED AREAS WITHIN THE FDOT RIGHT OF WAY SHALL BE RE-GRADED AND SODDED WITH ARGENTINE BAHIA SOD.
- 4 10' LANDSCAPE BUFFER
- 5 BIKE RACK
- 6 EXISTING CHAIN LINK FENCE
- 7 UTILITY ACCESS EASEMENT

EXISTING TREE CHART

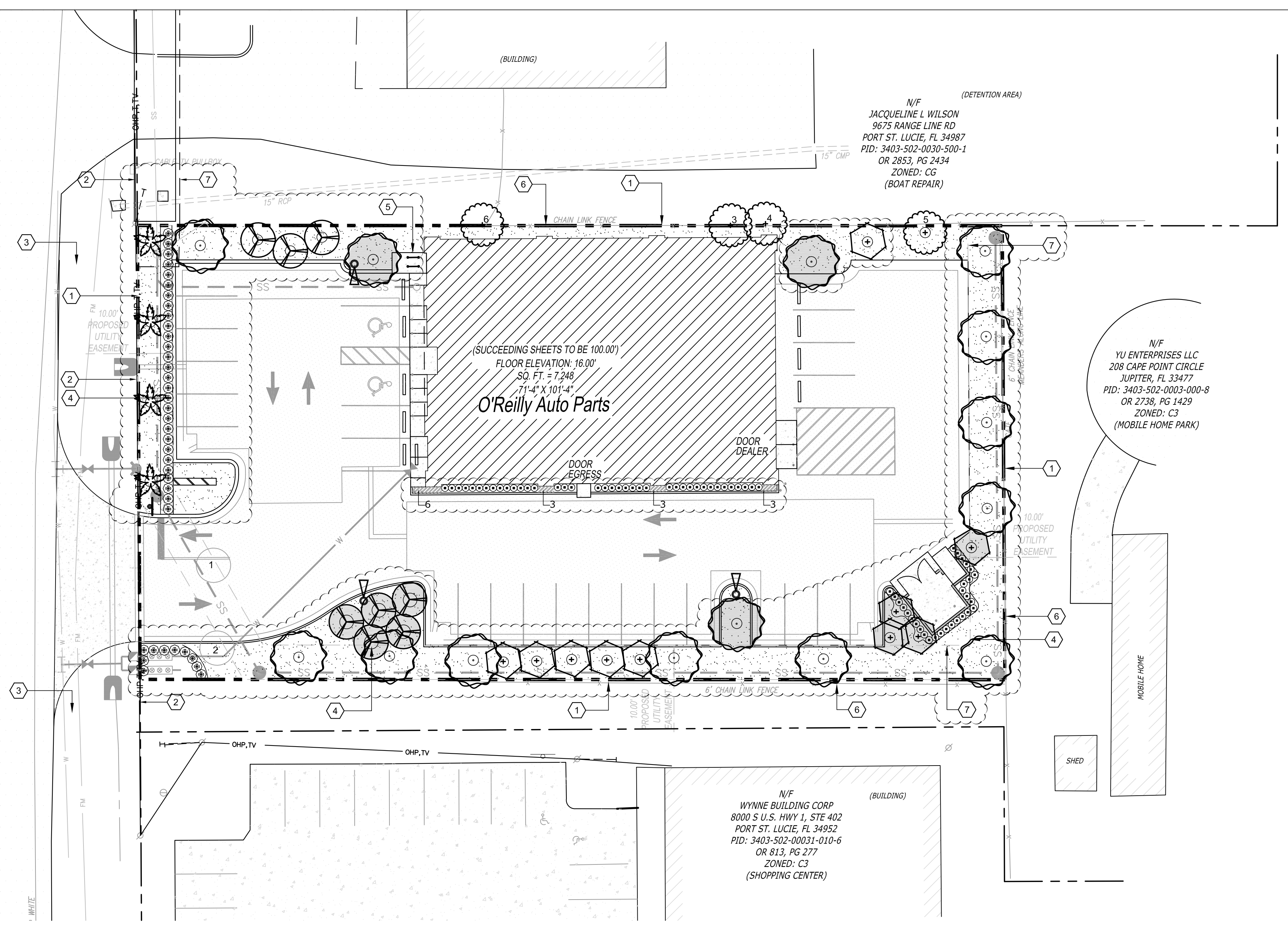
TREE TO BE REMOVED - NUMBER IN SYMBOL CORRELATES WITH BELOW EXISTING TREE CHART

TREE TO BE RETAINED - NUMBER IN SYMBOL CORRELATES WITH BELOW EXISTING TREE CHART

1	10" PALM
2	10" PALM
3	20" PALM
4	18" PALM
5	14" PALM
6	6" PALM

TREES TO BE REMOVED: 1-2
 TREES TO REMAIN: 3-6

NOTE: CONTRACTOR SHALL REMOVE ALL INVASIVE SPECIES, AS LISTED ON THE FLORIDA EXOTIC PEST PLANT COUNCIL'S INVASIVE PLANT SPECIES LIST, FROM PROPERTY.



LANDSCAPE ORDINANCE REQUIREMENTS

MINIMUM INTERIOR LANDSCAPED AREA FOR VEHICULAR USE AREA:	
VEHICULAR USE AREA	= 17,577 SF
REQUIRED LANDSCAPE AREA	= 1,172 SF (1 SF PER 15 SF OF TOTAL VUA)
PROPOSED LANDSCAPE AREA	= 1,418 SF
REQUIRED TREES	= 12 (1 TREE PER 100 SF OF LANDSCAPE AREA)
PROPOSED TREES	= 12
REQUIRED LANDSCAPE ADJACENT TO RIGHT OF WAY & PERIMETER	
US HWY 1 / S. FEDERAL HWY:	
BUFFER WIDTH	= 10'
REQUIRED LANDSCAPE AREA	= 936 SF
TREES REQUIRED	= 4 CANOPY TREES (1 PER 300 SF OF REQUIRED LANDSCAPE AREA = 3.12 TREES)
TREES PROPOSED	= 4 PALM TREES
SHRUBS	= HEDGE (24" HEIGHT)
SIDE YARD AND REAR YARD:	
BUFFER WIDTH	= 10'
NORTH:	
REQUIRED LANDSCAPE AREA	= 1,268 SF
TREES REQUIRED	= 7 TREES (1 PER 200 SF OF REQUIRED LANDSCAPE AREA)
TREES PROPOSED	= 7 (1 EXISTING)
WEST:	
REQUIRED LANDSCAPE AREA	= 789 SF
TREES REQUIRED	= 4 TREES (1 PER 200 SF OF REQUIRED LANDSCAPE AREA)
TREES PROPOSED	= 4
SOUTH:	
REQUIRED LANDSCAPE AREA	= 2,138 SF
TREES REQUIRED	= 11 TREES (1 PER 200 SF OF REQUIRED LANDSCAPE AREA)
TREES PROPOSED	= 11

PLANT MATERIALS SCHEDULE

SYMBOLS	COMMON NAME	BOTANICAL NAME	SIZE	SPACING	MIN SIZE	QTY
TREES						
	FLORIDA ELM	ULMUS AMERICANA V. FLORIDANA	2.5" CAL.	AS SHOWN	12' HT.	14
	'WATCHEZ' CRAPE MYRTLE MULTI-TRUNK	LAGERSTROEMIA INDICA 'WATCHEZ'	2.5" CAL.	AS SHOWN	12' HT.	10
	BOTTLEBRUSH TREE	CALLISTEMON RIGIDUS	3" CAL.	AS SHOWN	12' HT.	8
	CABBAGE PALM -10' CLEAR TRUNK	SABAL PALMETTO	15' OV. HT.	AS SHOWN	10' CLT.	4
SHADED TREES REPRESENT TREES FOR VEHICULAR USE AREA						
SHRUBS						
	MRS. SCHILLERS DELIGHT VIBURNUM	V. OBOVATUM 'MRS. SCHILLERS DELIGHT'	7 GAL.	3'-0" O.C.	24" HT.	38
	PODOCARPUS	PODOCARPUS MACROPHYLLA	7 GAL.	2'-0" O.C.	24" HT.	68
GROUND COVER						
	EVERGREEN GIANT LIRIOPE	LIRIOPE MUSCARI 'EVERGREEN GIANT'	1 GAL.	1'-8" O.C.		15
NUMBER INDICATED ON HATCH THROUGHOUT THE DRAWING REFLECTS THE NUMBER OF GRASSES IN THAT PARTICULAR AREA.						
	ARGENTINE BAHIA	PASPALUM NOTATUM 'ARGENTINE'	SOD			6,900 SF
MULCH NOTE: ALL PLANT BEDS SHALL CONTAIN A 4" LAYER OF PINE NEEDLES (TYP.) ALL TREES IN SOD SHALL RECEIVE A 4" DIAMETER MULCH RING (TYP.)						
SOD NOTE: DROUGHT TOLERANT BAHIA, AS SPECIFIED ABOVE, TO BE USED TO COVER ALL AREAS DISTURBED DURING CONSTRUCTION. CONTRACTOR SHALL REPAIR AND REPLACE ANY DAMAGE TO THE SITE OUTSIDE OF PROPERTY LINES DUE TO ON-SITE CONSTRUCTION ACTIVITY.						

PLANTING PLAN

SCALE: 1" = 20'

ANDREW HILL, R.L.A.
 FL LICENSE NO. LA6667073

COMM # 3625

DATE: 10-24-14
 REVISION
 DATE: 07-28-15
 10-27-15
 01-28-16