

ORDINANCE NO. 16-007

AN ORDINANCE BY THE CITY COMMISSION OF THE CITY OF FORT PIERCE, FLORIDA, **ABANDONING ONE PORTION OF A PUBLIC RIGHT-OF-WAY, LYING ON THE EAST SIDE OF SOUTH 2ND STREET ADJACENT OF 411 SOUTH INDIAN RIVER DRIVE WITHIN THE CITY OF FORT PIERCE, FLORIDA;** REPEALING ALL ORDINANCES OR PARTS OF ORDINANCES IN CONFLICT HEREWITH; AND PROVIDING FOR AN EFFECTIVE DATE.

WHEREAS, the City Commission of the City of Fort Pierce, pursuant the Charter and City Code of the City of Fort Pierce, has been requested to vacate and abandon one portion of an existing public right-of-way, lying on the east side of South 2nd Street adjacent of 411 South Indian River Drive within the City of Fort Pierce, Florida; and

WHEREAS, the City of Fort Pierce has certain right-of-ways or thoroughfare as hereinafter described, which is not needed for right-of-way, thoroughfare purposes, or for location and maintenance of any and all utilities by the City of Fort Pierce; and

WHEREAS, in consideration of the above, it is in the best interest of the general welfare of the City of Fort Pierce to vacate and abandon said right-of-way;

NOW BE IT ORDAINED BY THE CITY COMMISSION OF THE CITY OF FORT PIERCE, FLORIDA;

SECTION 1. That the right-of-way, more particularly described as follows, be and it is hereby vacated and abandoned:

- 1. A PARCEL OF LAND BEING PART SECTION 10, TOWNSHIP 35 SOUTH, RANGE 40 EST, ST. LUCIE COUNTY FLORIDA AND ABUTTING LOT 3, BLOCK D OF ANDREWS AND RICHARDS RE-SUBDIVISION, AS PER THE PLAT THEREOF, AS RECORDED IN PLAT BOOK 1, PAGE 191, ST. LUCIE COUNTY, FLORIDA, PUBLIC RECORDS BEING MORE PARTICULARLY DESCRIBED AS FOLLOWS;**

BEGINNING AT THE NORTHWEST CORNER OF LOT 3, BLOCK D, ANDREWS AND RICHARDS RE-SUBDIVISION, AS PER THE PLAT THEREOF, AS RECORDED IN PLAT BOOK 1, PAGE 191, ST. LUCIE COUNTY, FLORIDA, RUN SOUTH 17°06'20" EAST (BASIS OF BEARINGS) ALONG THE WEST LINE OF SAID LOT 3, A DISTNACE OF 91.62 FEET; THENCE RUN NORTH 89°51'35" WEST, A DISTANCE OF 4.19 FEET; THENCE RUN NORTH 17°06'20" WEST, A DISTANCE OF 92.62 FEET; THENCE RUN SOUTH 89°51'35" EAST, A DISTNACE OF 4.19 FEET TO THE POINT OF BEGINNING.

As depicted on Exhibit "A", attached hereto and incorporated herein.

SECTION 2. All ordinances or parts of ordinances in conflict herewith are hereby repealed.

SECTION 3. This ordinance shall be and become effective upon final passage.

APPROVED AS TO FORM & CORRECTNESS:

Robert V. Schwerer, Esq.
City Attorney

STATE OF FLORIDA
COUNTY OF ST. LUCIE

WE, THE UNDERSIGNED, Mayor Commissioner and the City Clerk of the City of Fort Pierce, Florida, do hereby certify that the foregoing and above Ordinance No. 15-____ was duly advertised by title only in the St. Lucie News Tribune on _____; copy of said ordinance was made available at the office of the City Clerk to the public upon request; said ordinance was duly introduced, read by title only, and passed on first reading by the City Commission of the City of Fort Pierce, Florida, on _____; and was duly introduced, read by title only, and passed on second and final reading on _____, by the City Commission of the City of Fort Pierce, Florida.

IN WITNESS HEREWITH, we hereunto set our hands and affix the Official Seal of the City of Fort Pierce, Florida, this the _____.

Linda Hudson,
Mayor Commissioner

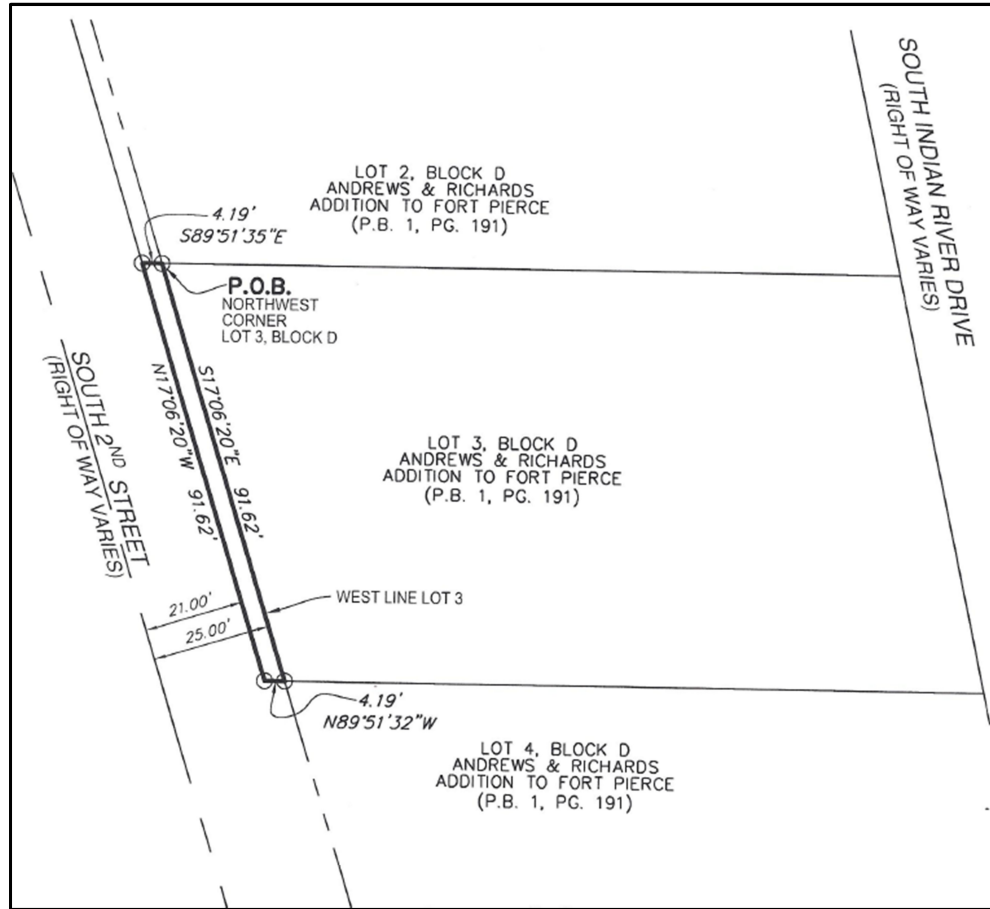
ATTEST:

Linda W. Cox,
City Clerk

(City Seal)

Right-of-way Abandonment

Exhibit "A"



Legal Description: A PARCEL OF LAND BEING PART SECTION 10, TOWNSHIP 35 SOUTH, RANGE 40 EST, ST. LUCIE COUNTY FLORIDA AND ABUTTING LOT 3, BLOCK D OF ANDREWS AND RICHARDS RE-SUBDIVISION, AS PER THE PLAT THEREOF, AS RECORDED IN PLAT BOOK 1, PAGE 191, ST. LUCIE COUNTY, FLORIDA, PUBLIC RECORDS BEING MORE PARTICULARLY DESCRIBED AS FOLLOWS;

BEGINNING AT THE NORTHWEST CORNER OF LOT 3, BLOCK D, ANDREWS AND RICHARDS RE-SUBDIVISION, AS PER THE PLAT THEREOF, AS RECORDED IN PLAT BOOK 1, PAGE 191, ST. LUCIE COUNTY, FLORIDA, RUN SOUTH 17°06'20" EAST (BASIS OF BEARINGS) ALONG THE WEST LINE OF SAID LOT 3, A DISTNACE OF 91.62 FEET; THENCE RUN NORTH 89°51'35" WEST, A DISTNACE OF 4.19 FEET; THENCE RUN NORTH 17°06'20" WEST, A DISTNACE OF 92.62 FEET; THENCE RUN SOUTH 89°51'35" EAST, A DISTNACE OF 4.19 FEET TO THE POINT OF BEGINNING.