

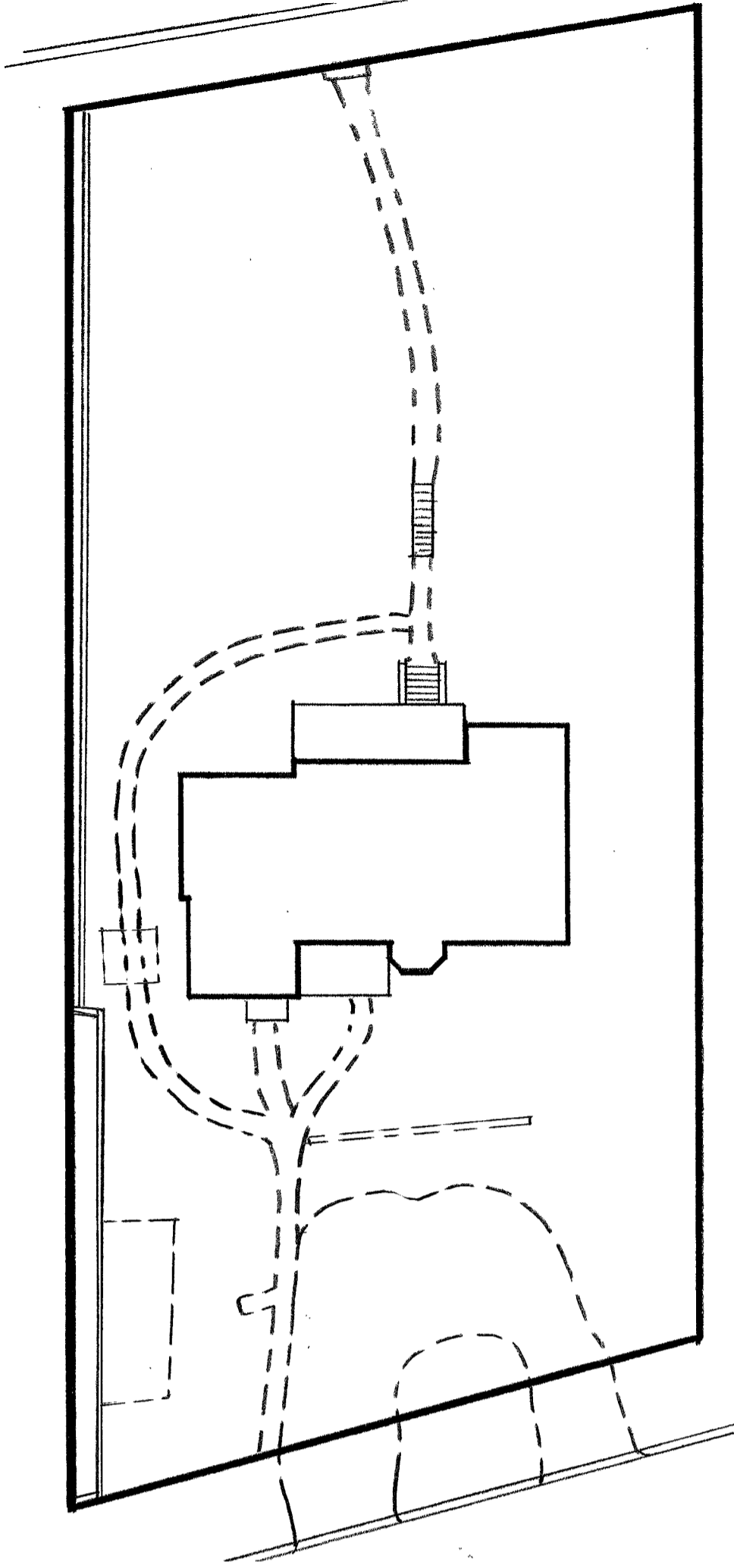
1/22/16
PHYSICAL
2/29/16 PLANNING

ST. ANDREWS EPISCOPAL
EARLY LEARNING CENTER
FT. PIERCE,
FLORIDA

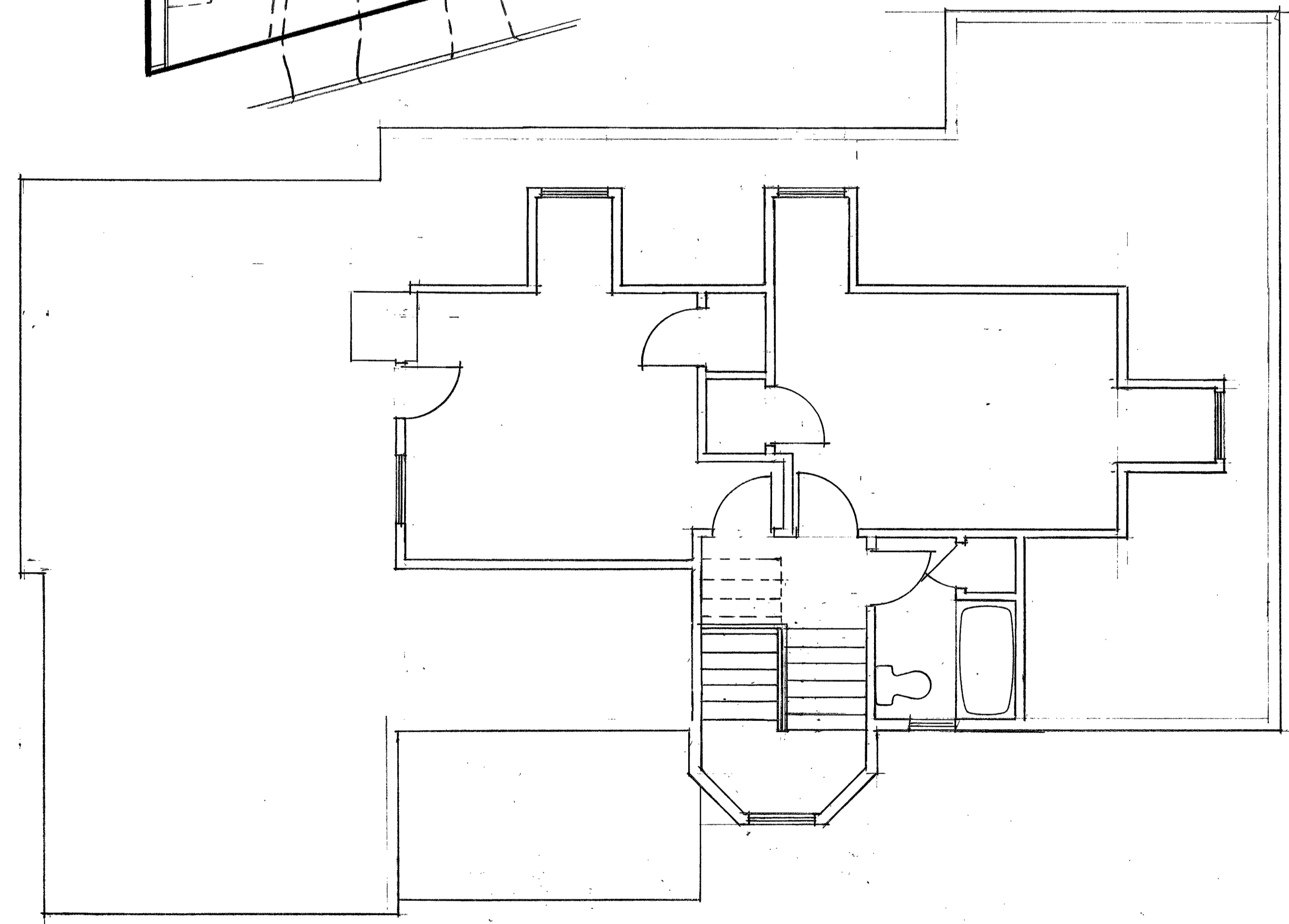
PETER B. COOK

COOK & MENARD
ARCHITECTURE INC.
STATE OF FLORIDA REGISTRATION NO. AA0003484
FT. PIERCE, FLORIDA 34950
806 DELAWARE AVE.
PHONE: (772) 460-7751
FAX: (772) 460-4244

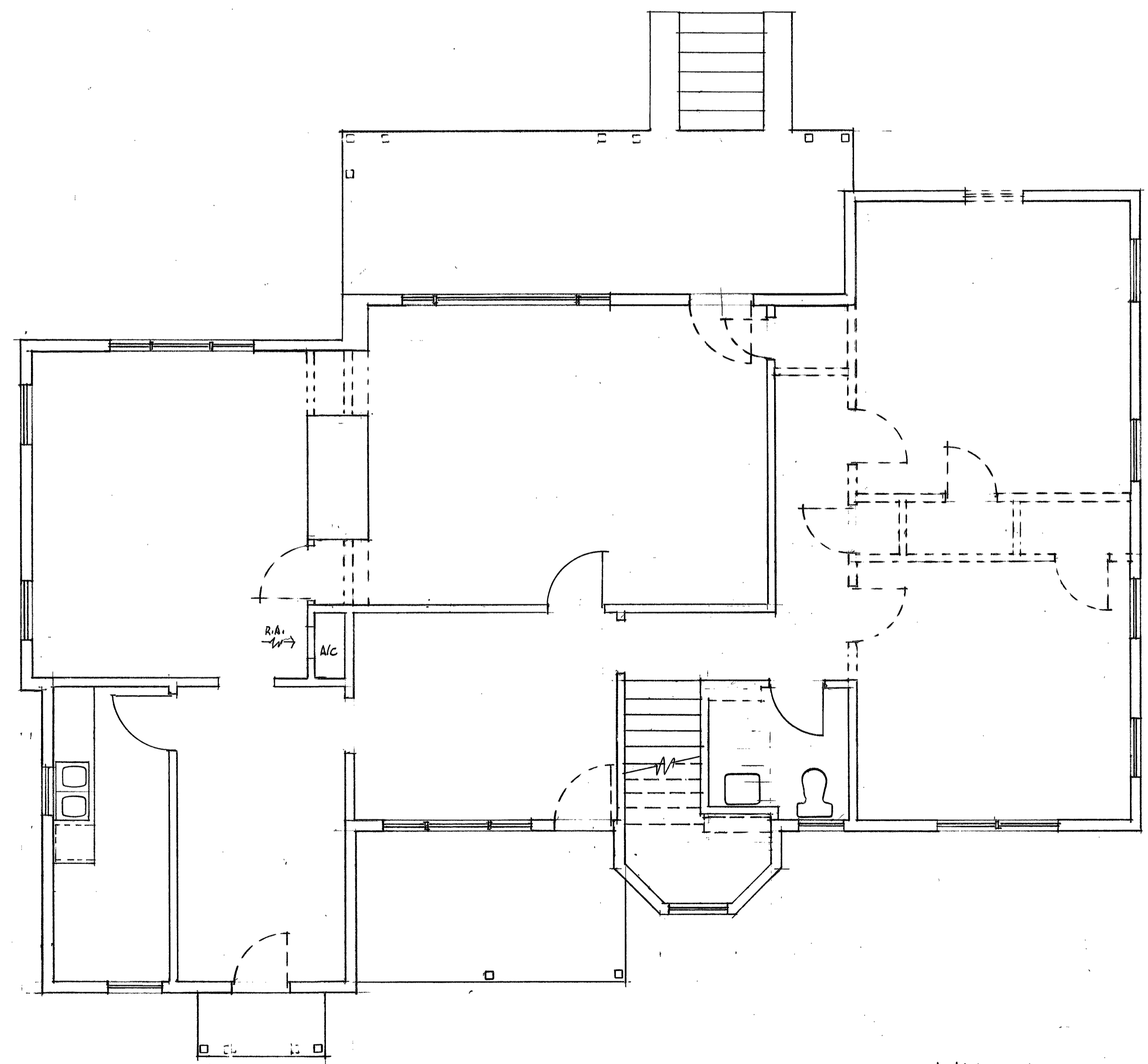
OF
ST. ANDREWS
EARLY LEARNING



SITE PLAN
AS-BUILT / DEMOLITION 1/20"



SECOND FLOOR PLAN
AS-BUILT / DEMOLITION 1/4" = 1'-0"



FIRST FLOOR PLAN
AS-BUILT / DEMOLITION 1/4" = 1'-0"

WALL LEGEND

- EXISTING WALLS TO REMAIN
- EXISTING WALLS TO BE REMOVED

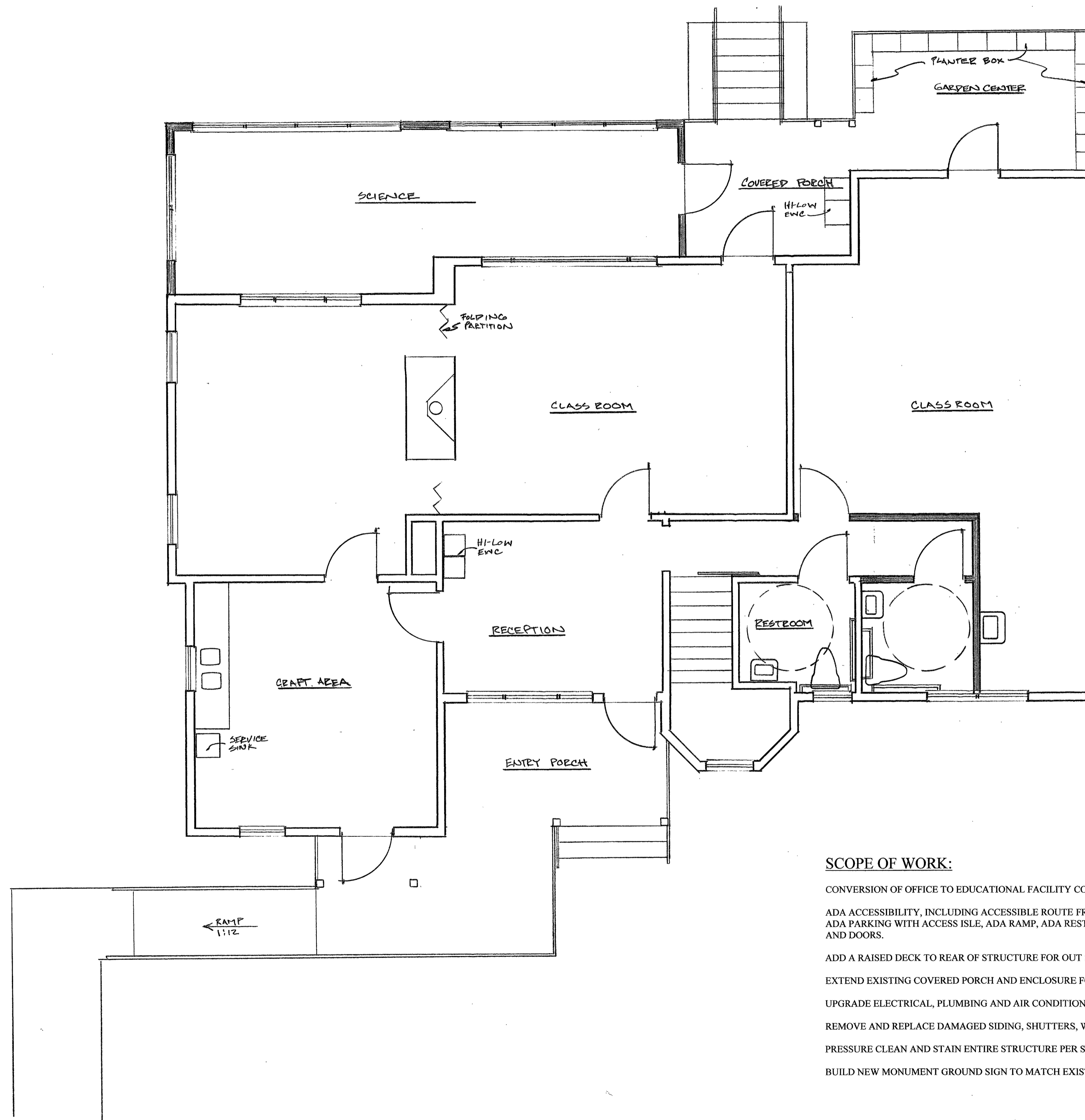
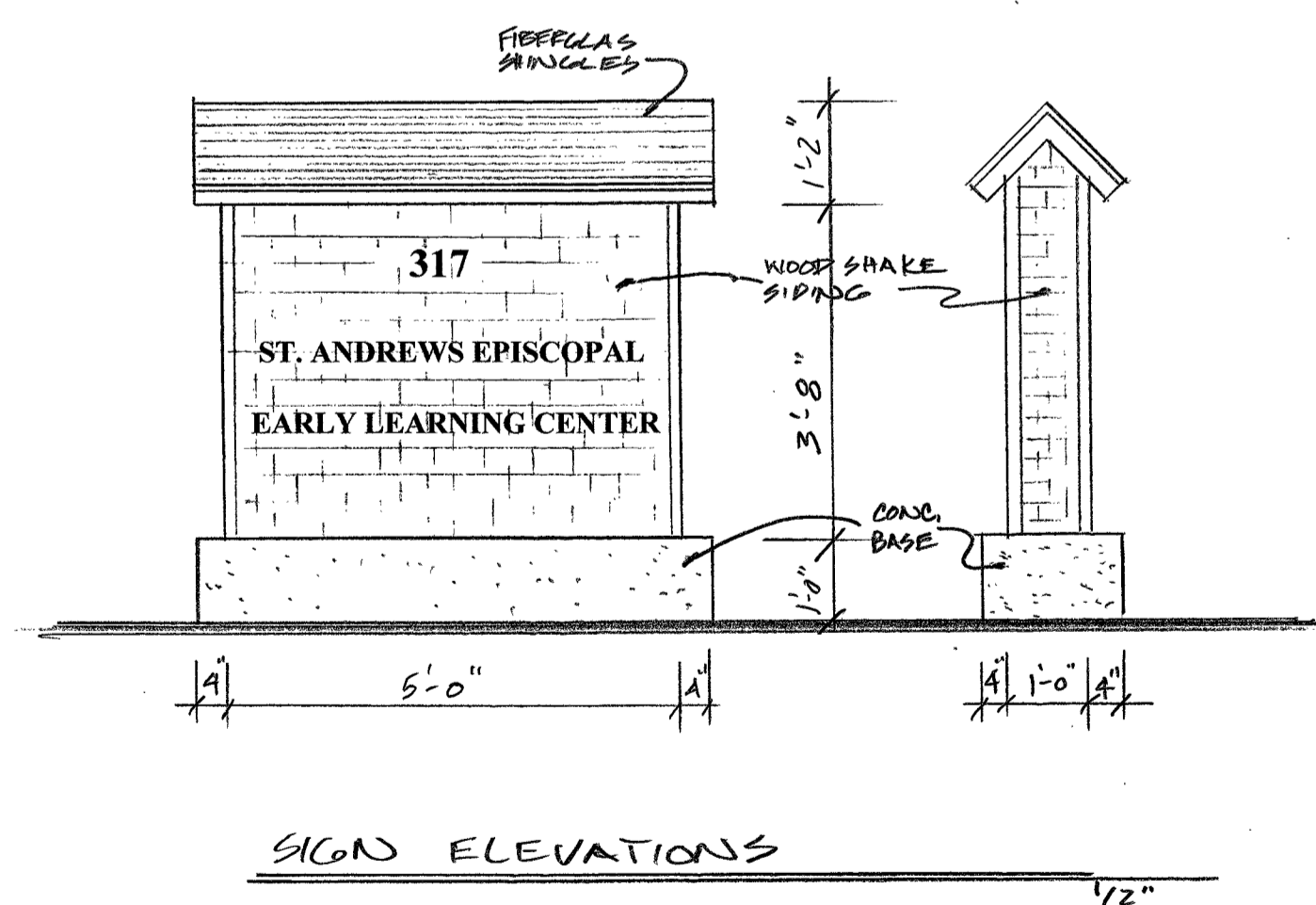
Model: With Roofs
Mount: In-Ground Mount

Model Number: FC12-712
Brand: PlayDesigns
Weight: 2,082.00 LBS
Age Range: 2-5 years
Safety Zone: 29' 5" x 36' 10"
Unit Size: 17' 5" x 24' 10"



Product Description

This Fun Center Design # 7 Play System by PlayDesigns is designed with three large leaf roofs. It stands on 3-inch square upright posts. This playing equipment includes in-ground stakes or available as a surface mount. The in-ground model play system is constructed to accommodate 12 inches of safety surfacing such as wood fiber for safety. The Fun Center Design # 7 Play System comes with multiple decks to support elevated play. The roofs in this playing equipment are designed in unique shape and protect the kids from the sun and rain. This play system designed by PlayDesigns includes several panels like a fine motor panel and a peek a boo panel in different colors. This fun play system includes a curved slide and two straight slides. Request this Fun Center Design # 7 Play System now and enjoy!



WALL LEGEND

- EXISTING WALLS TO REMAIN
- ▬ PROPOSED 2X4 FRAME WALLS

SCOPE OF WORK:

- CONVERSION OF OFFICE TO EDUCATIONAL FACILITY CONSISTING OF THE FOLLOWING:
- ADA ACCESSIBILITY, INCLUDING ACCESSIBLE ROUTE FROM THE PUBLIC RIGHT OF WAY, ADA PARKING WITH ACCESS ISLE, ADA RAMP, ADA RESTROOMS, DRINKING FOUNTAINS AND DOORS.
- ADD A RAISED DECK TO REAR OF STRUCTURE FOR OUT SIDE GARDEN CENTER.
- EXTEND EXISTING COVERED PORCH AND ENCLOSURE FOR SCIENCE CENTER.
- UPGRADE ELECTRICAL, PLUMBING AND AIR CONDITIONING AS REQUIRED.
- REMOVE AND REPLACE DAMAGED SIDING, SHUTTERS, WINDOWS AND DOORS.
- PRESSURE CLEAN AND STAIN ENTIRE STRUCTURE PER SELECTED COLOR CHIPS.
- BUILD NEW MONUMENT GROUND SIGN TO MATCH EXISTING STRUCTURE.

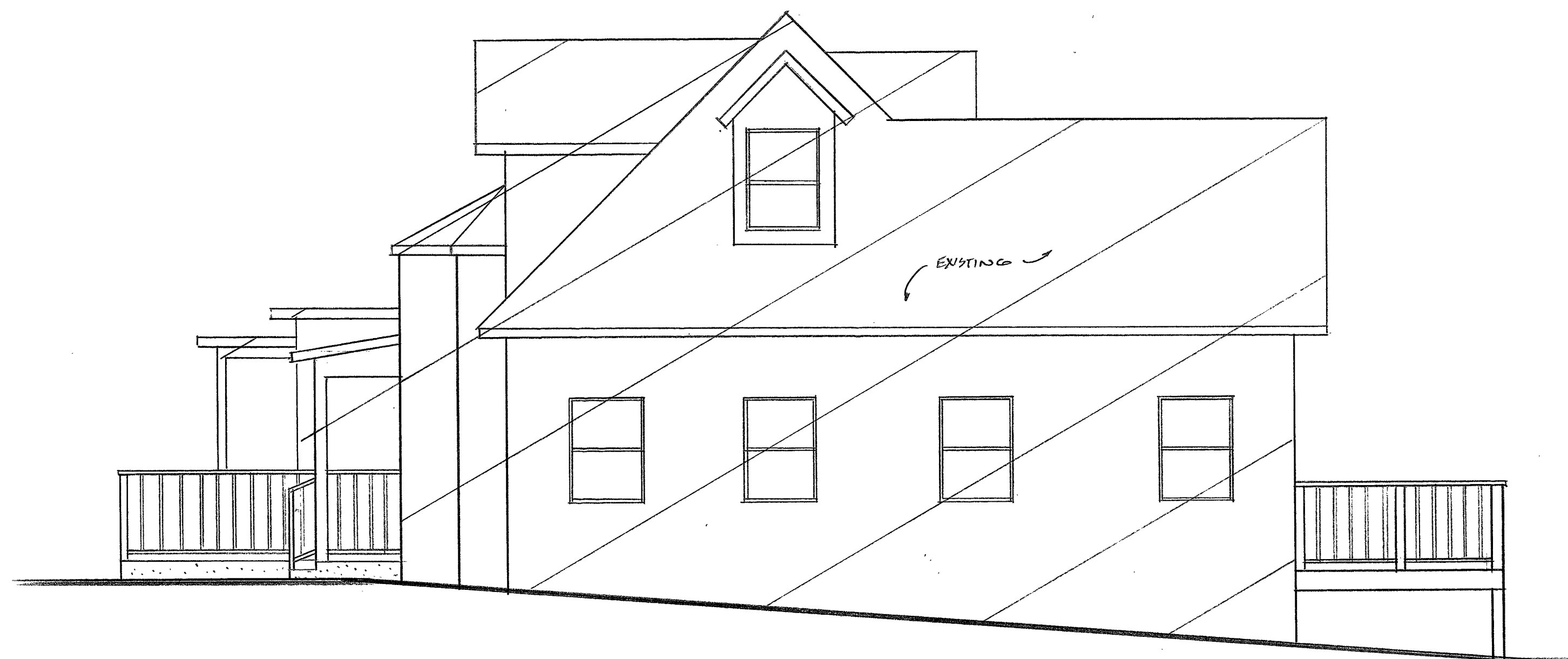
RENOVATION FLOOR PLAN
1/4"

1/22/16 HISTORICAL
2/29/16 PLANNING

ST. ANDREWS EPISCOPAL
EARLY LEARNING CENTER
FLORIDA

PETER B. COOK

COOK & MENARD
ARCHITECTURE INC.
STATE OF FLORIDA REGISTRATION NO. AA0003494
FT. PIERCE, FLORIDA 34950
886 DELAWARE AVE.
FT. PIERCE, FLORIDA 34950
PHONE: (772) 466-7751
FAX: (772) 466-4244

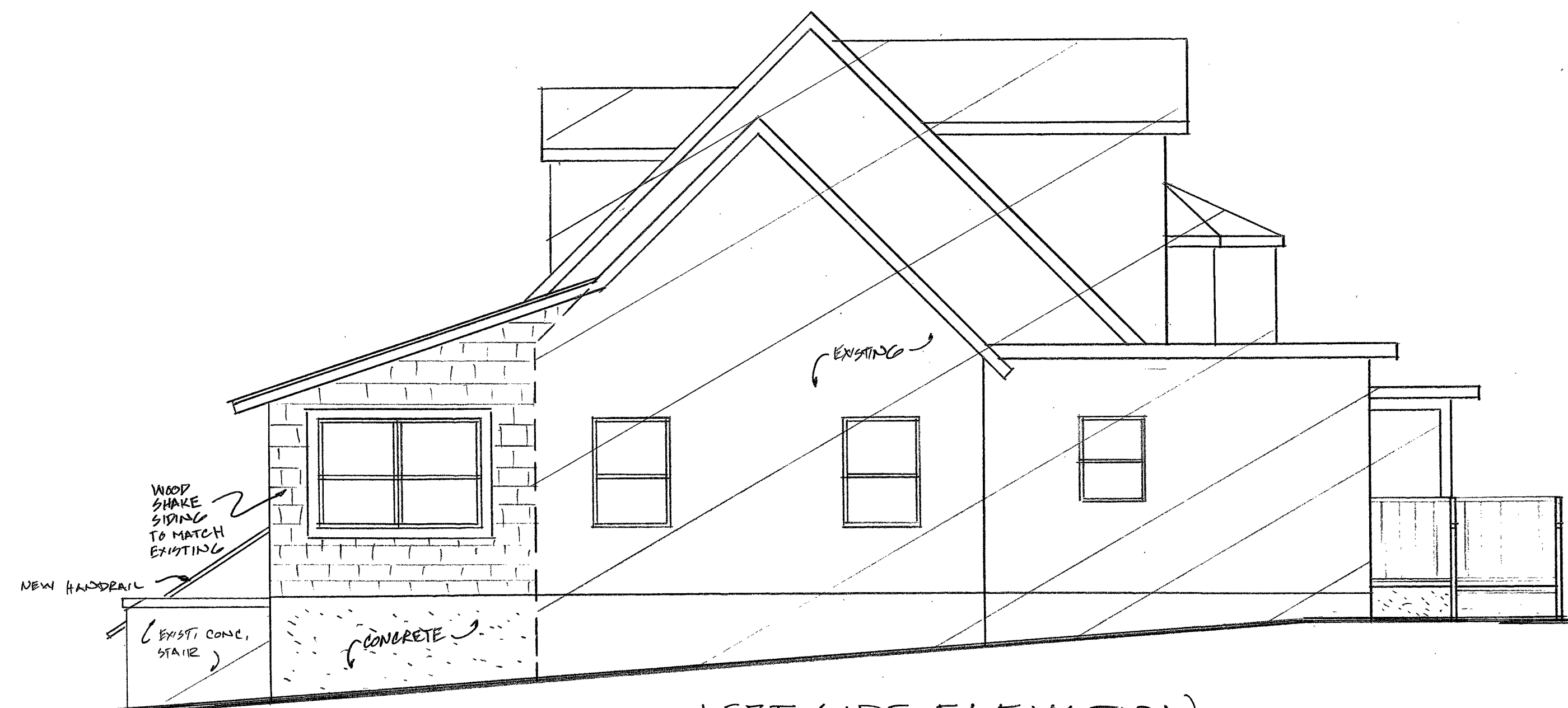


RIGHT SIDE ELEVATION



REAR ELEVATION

1/4"



LEFT SIDE ELEVATION

1/4"



FRONT ELEVATION

1/4"

1/22/16
HYDRA-CAL
2/29/16 REVISIONS

ST. ANDREWS EPISCOPAL
EARLY LEARNING CENTER
FT. PIERCE, FLORIDA

PETER B. COOK

COOK & MENARD
ARCHITECTURE INC.
STATE OF FLORIDA REGISTRATION NO. A.A.00003494
FT. PIERCE, FLORIDA 34909
806 DELAWARE AVE.
PHONE: (772) 460-7151
FAX: (772) 460-4244

SHEET
3
OF
ST. ANDREWS EPISCOPAL
EARLY LEARNING CENTER