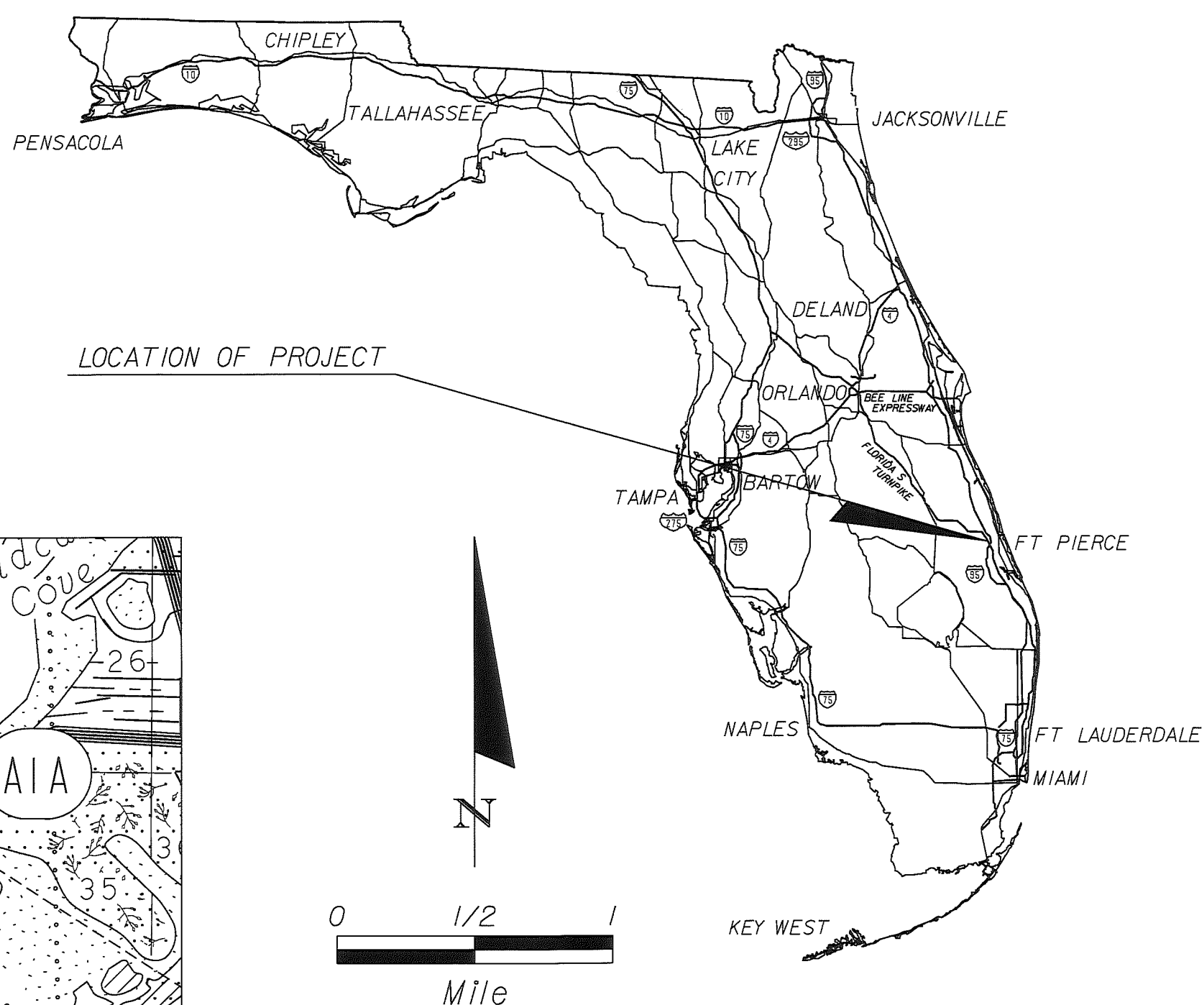


MAINTENANCE MAP

FOR NORTH 13TH STREET FROM 400' SOUTH OF AVENUE D TO AVENUE E



INDEX OF MAINTENANCE MAP

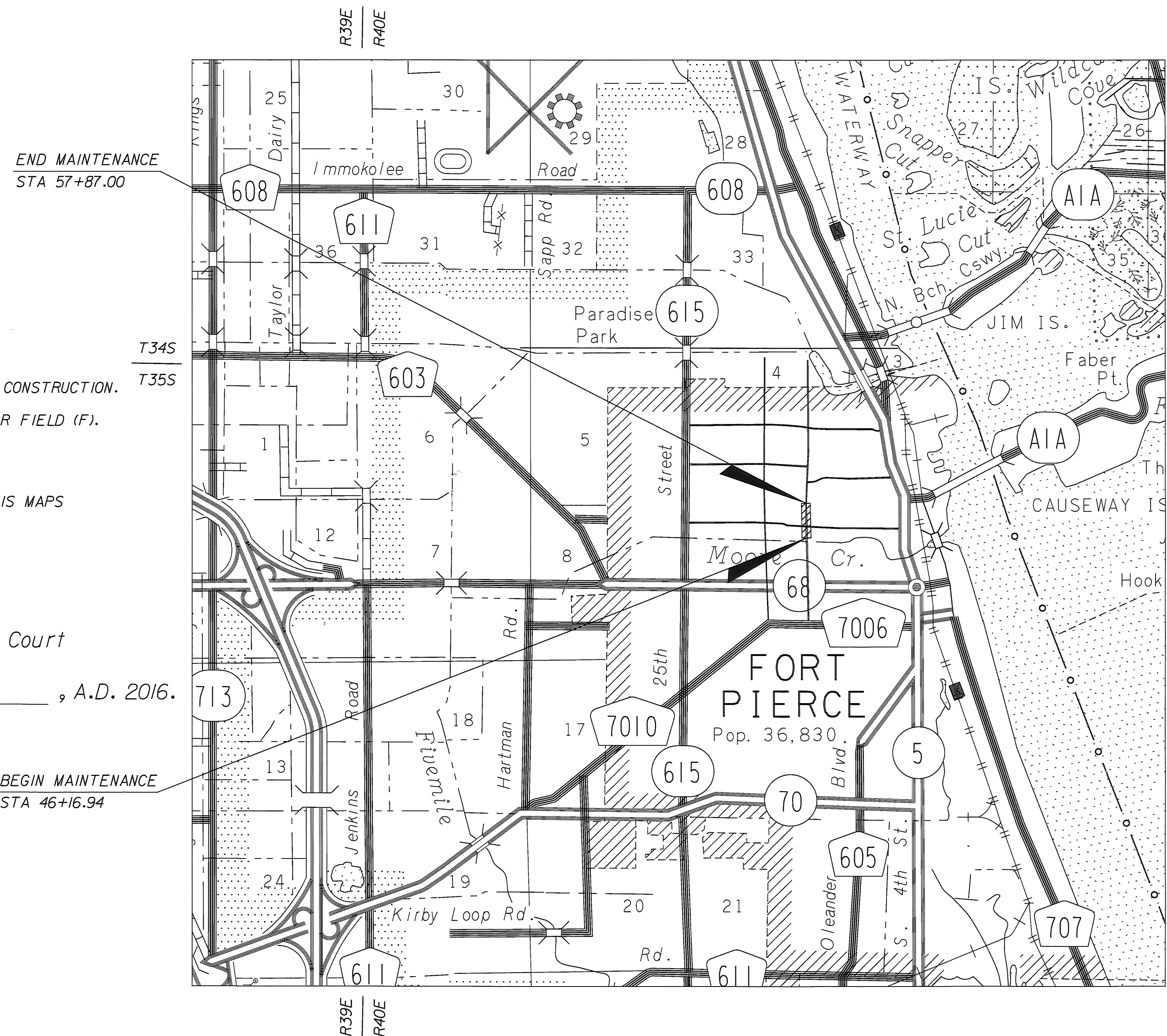
| SHEET NO. | SHEET DESCRIPTION |
|-----------|---------------------------|
| 1 | KEY SHEET & GENERAL NOTES |
| 2-4 | MAINTENANCE MAP |

GENERAL NOTES

1. ALL STATIONS AND OFFSETS ARE REFERENCED TO THE CENTERLINE OF CONSTRUCTION.
2. ALL DIMENSIONS ARE CALCULATED UNLESS LABELED PLAT (P), DEED (D), OR FIELD (F).
3. EXISTING RIGHT OF WAY AND TOPOGRAPHIC SURVEY DATA PROVIDED BY BURDETTE & ASSOCIATES, INC.
4. LOT LINES ARE SHOWN PER THE INFORMATION FROM ST. LUCIE COUNTY GIS MAPS AND THE ST. LUCIE COUNTY PROPERTY APPRAISER.

Filed for record in the office of the Clerk of the Circuit Court for the County of St. Lucie, State of Florida, in Road Plat Book _____ Page _____ on the _____ day of _____, A.D. 2016.

BY: CLERK OF CIRCUIT COURT
ST. LUCIE COUNTY, FLORIDA



PLANS PREPARED BY:
Kimley»Horn
445 24th STREET, SUITE 200
VERO BEACH, FL 32960
TEL (772) 794-4100
PROJECT NUMBER: 47922000
CERTIFICATE OF AUTHORIZATION: 00000696

NOTE: THE SCALE OF THESE PLANS MAY HAVE CHANGED DUE TO REPRODUCTION.

I CERTIFY that the maintenance right of way limits shown in this map with crosshatch, were identified by myself as having been maintained continuously for four (4) consecutive years without interruption by the City of Fort Pierce.

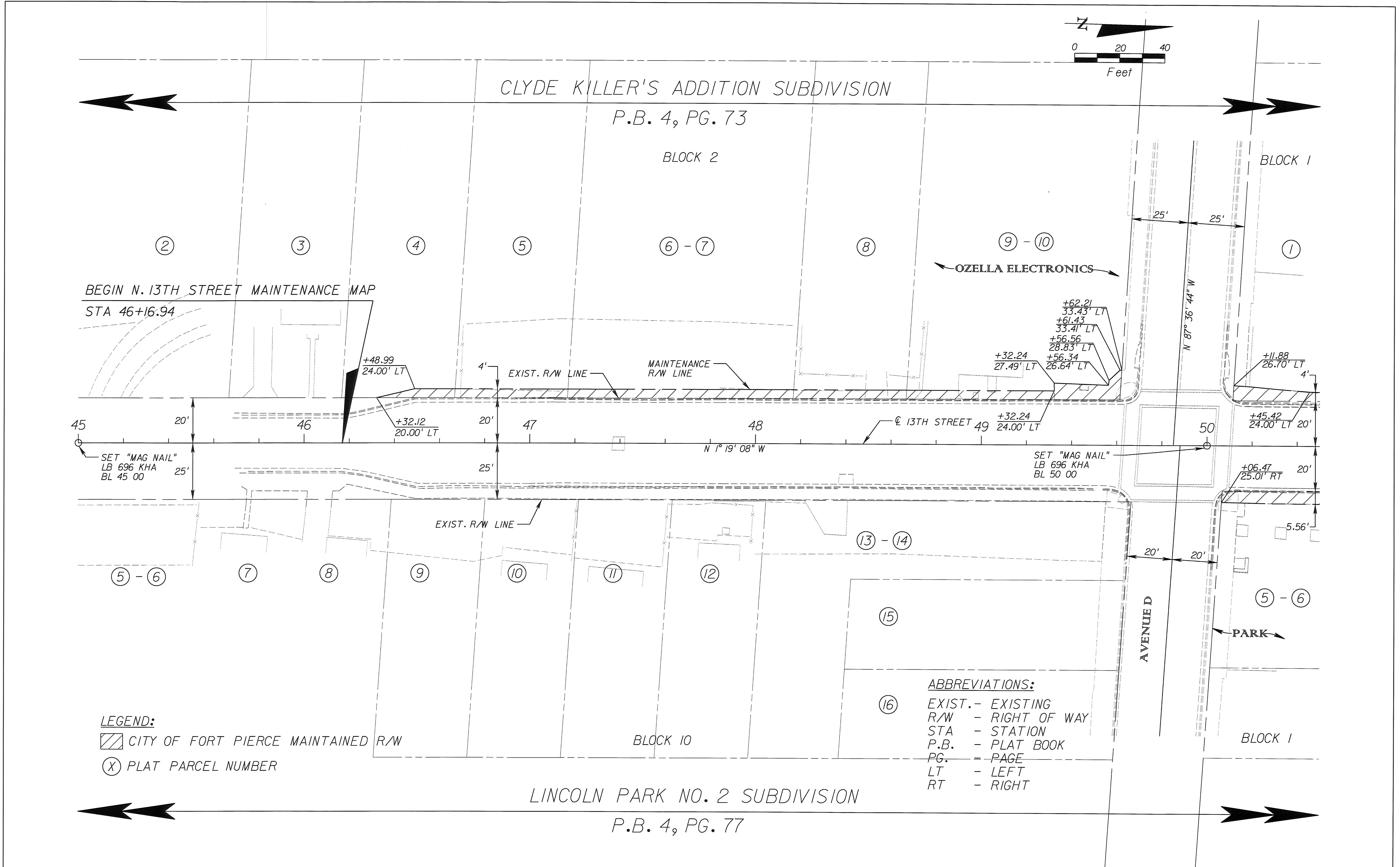
BY: John R. Andrews, II
JOHN R. ANDREWS, II, P.E.
FORT PIERCE CITY ENGINEER

This is a map of North 13th Street which is a street located within the City of Fort Pierce, Florida, intersecting with Avenue D and Avenue E, as shown on said map. The lands that make up North 13th Street between Avenue D and Avenue E are a public street, maintained by the City of Fort Pierce for more than four (4) years and have vested in the City of Fort Pierce in accordance with Florida Statute 95.36(1).

CERTIFIED this _____ day _____, 2016 by the Mayor and City Clerk, City of Fort Pierce, Florida.

BY: _____ ATTEST: _____
MAYOR-COMMISSIONER CITY CLERK

SHEET NO.
1



BEGIN N. 13TH STREET MAINTENANCE MAP
STA 46+16.94

SET "MAG NAIL"
LB 696 KHA
BL 45 00

SET "MAG NAIL"
LB 696 KHA
BL 50 00

LEGEND:
 CITY OF FORT PIERCE MAINTAINED R/W
 PLAT PARCEL NUMBER

ABBREVIATIONS:
 EXIST. - EXISTING
 R/W - RIGHT OF WAY
 STA - STATION
 P.B. - PLAT BOOK
 PG. - PAGE
 LT - LEFT
 RT - RIGHT

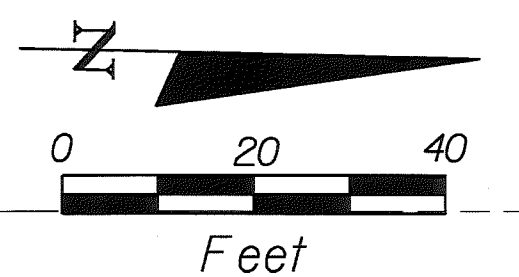
| REVISIONS | | | | | |
|-----------|----|-------------|------|----|-------------|
| DATE | BY | DESCRIPTION | DATE | BY | DESCRIPTION |
| | | | | | |

Kimley»Horn
 601 21ST STREET, SUITE 300
 VERO BEACH, FL 32960
 (772) 562-7991
 CERTIFICATE OF AUTHORIZATION: 00000696

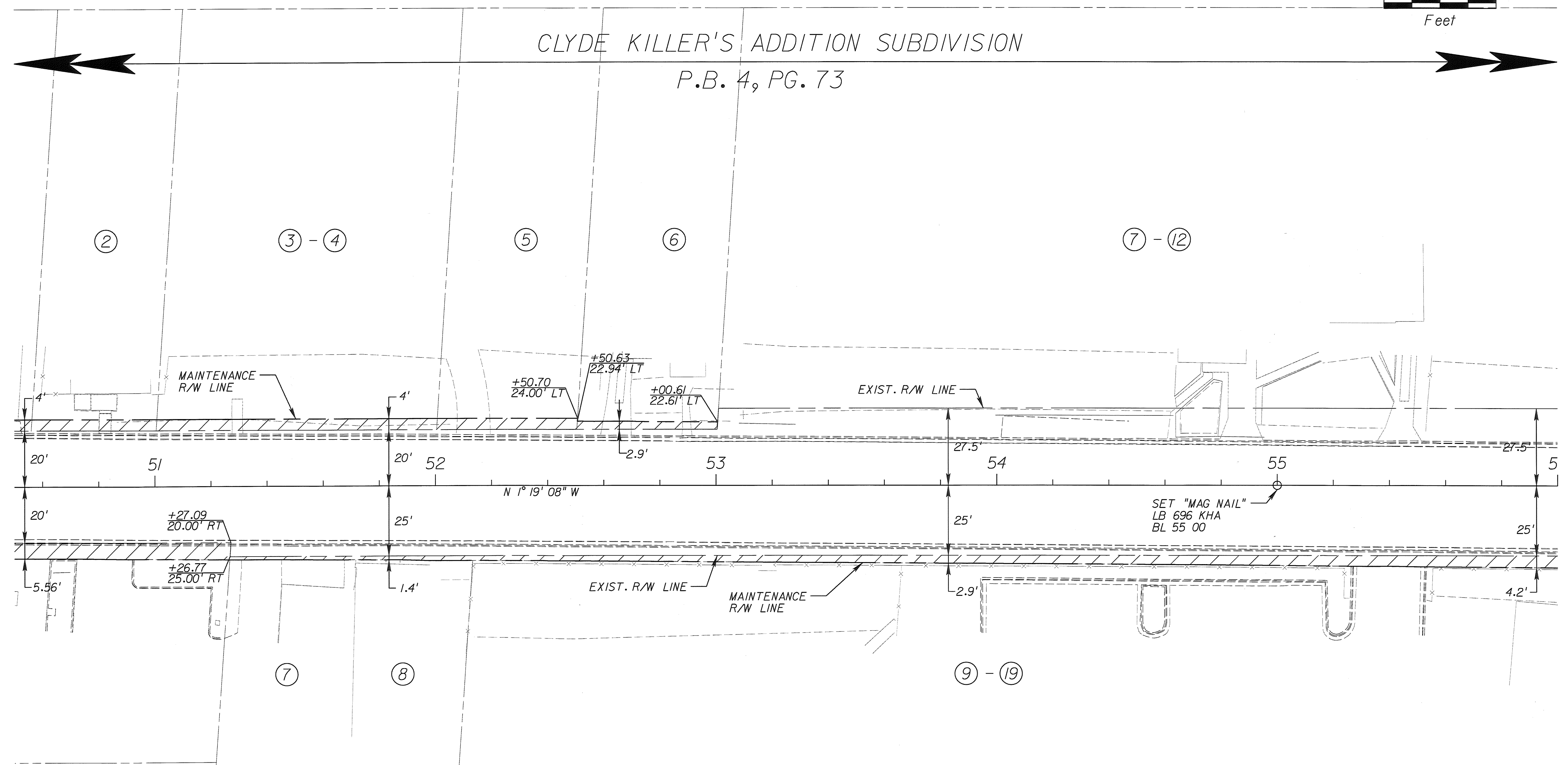
CITY OF FORT PIERCE
NORTH 13TH STREET MAINTENANCE MAP
FROM ORANGE AVENUE TO AVENUE D

MAINTENANCE MAP

SHEET NO.
2



CLYDE KILLER'S ADDITION SUBDIVISION
P.B. 4, PG. 73



LEGEND:
 CITY OF FORT PIERCE MAINTAINED R/W
 (X) PLAT PARCEL NUMBER

ABBREVIATIONS:
 EXIST. - EXISTING
 R/W - RIGHT OF WAY
 STA - STATION
 P.B. - PLAT BOOK
 PG. - PAGE
 LT - LEFT
 RT - RIGHT

LINCOLN PARK NO. 2 SUBDIVISION
P.B. 4, PG. 77

| REVISIONS | | | | | |
|-----------|----|-------------|------|----|-------------|
| DATE | BY | DESCRIPTION | DATE | BY | DESCRIPTION |
| | | | | | |

Kimley»Horn
 601 21ST STREET, SUITE 300
 VERO BEACH, FL 32960
 (772) 562-7981
 CERTIFICATE OF AUTHORIZATION: 00000696

CITY OF FORT PIERCE
**NORTH 13TH STREET MAINTENANCE MAP
 FROM ORANGE AVENUE TO AVENUE D**

MAINTENANCE MAP

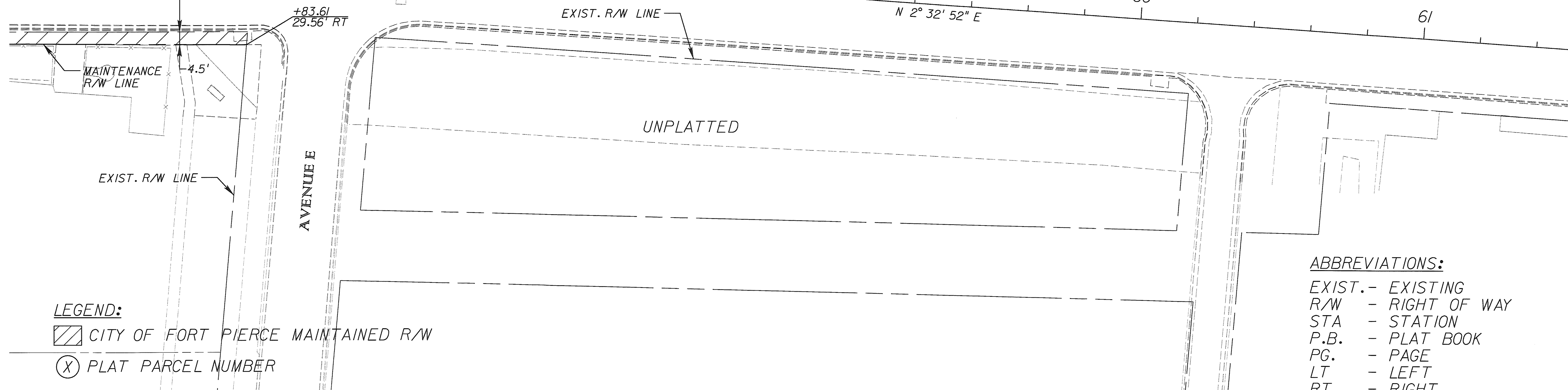
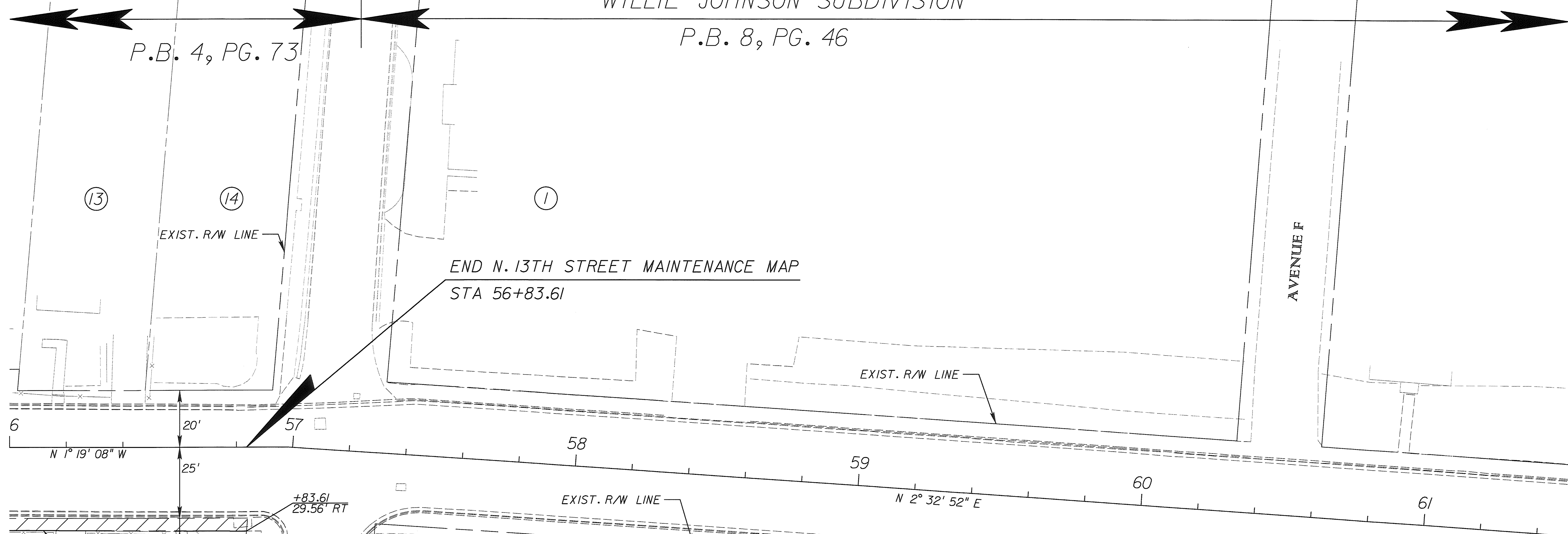
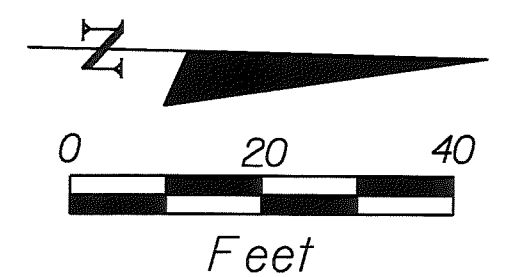
SHEET NO.
3

CLYDE KILLER'S
ADDITION SUBDIVISION

P.B. 4, PG. 73

WILLIE JOHNSON SUBDIVISION

P.B. 8, PG. 46



LEGEND:

- CITY OF FORT PIERCE MAINTAINED R/W
- PLAT PARCEL NUMBER

ABBREVIATIONS:

- EXIST. - EXISTING
- R/W - RIGHT OF WAY
- STA - STATION
- P.B. - PLAT BOOK
- PG. - PAGE
- LT - LEFT
- RT - RIGHT

LINCOLN PARK NO. 2 SUBDIVISION

P.B. 4, PG. 77

REVISIONS

| DATE | BY | DESCRIPTION | DATE | BY | DESCRIPTION |
|------|----|-------------|------|----|-------------|
| | | | | | |

Kimley»Horn

601 21ST STREET, SUITE 300
VERO BEACH, FL 32960
(772) 562-7981
CERTIFICATE OF AUTHORIZATION: 00000696

CITY OF FORT PIERCE

NORTH 13TH STREET MAINTENANCE MAP
FROM ORANGE AVENUE TO AVENUE D

MAINTENANCE MAP

SHEET NO.

4