

PROPOSED SITE DATA

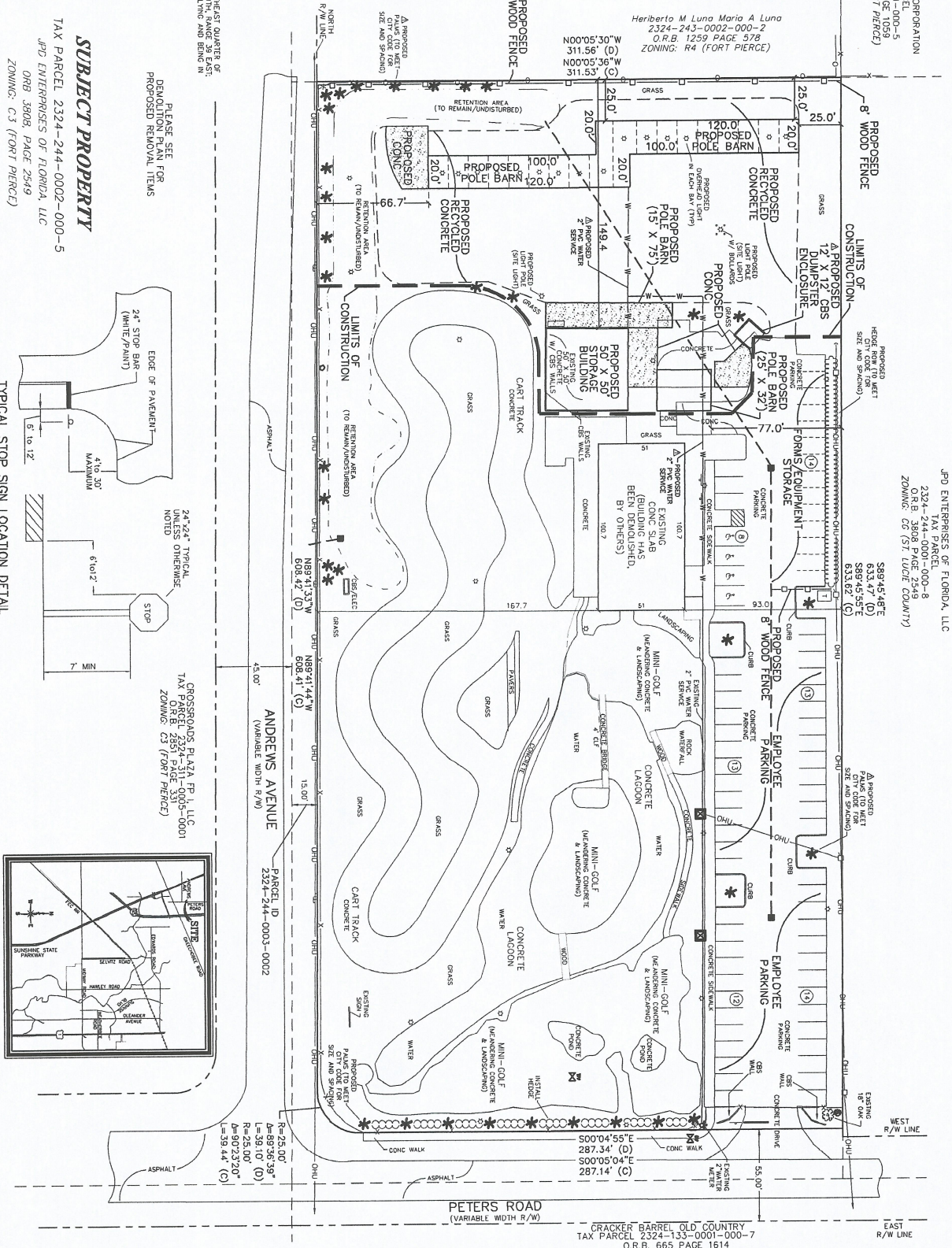
COMPONENT	ACRES	% OF SITE
EXISTING BUILDINGS (REMOVED TO BE REMOVED)	0.14	3.1
PROPOSED BUILDINGS	0.06	1.3
PROPOSED POLE BARN	0.15	3.4
EXISTING PLANNING	0.67	14.9
EXISTING GOAT COURSE	1.00	22.0
EXISTING TRACK	0.56	12.3
PROPOSED CONCRETE	0.07	1.5
EXISTING MISCELLANEOUS	0.43	9.5
IMPERVIOUS SURFACES TO RAIN	3.08	68.5
PERCENTAGE OF IMPERVIOUS SURFACES TO RAIN	13.43%	100
TOTAL SITE AREA	197.493	100

GENERAL NOTES

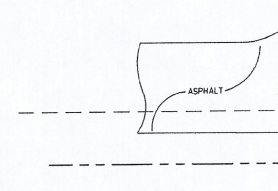
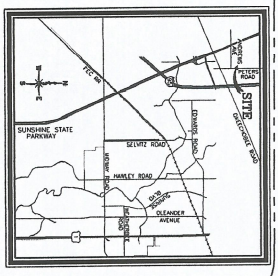
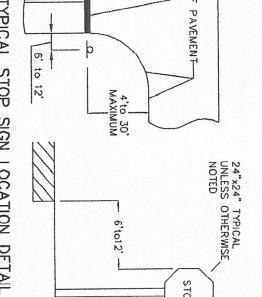
- PROJECT NAME: JPD ENTERPRISES OF FLORIDA, LLC
- LOCATION: SECTION 24, TOWNSHIP 33 SOUTH, RANGE 39 EAST, FORT PIERCE, FLORIDA
- OWNER: JPD ENTERPRISES OF FLORIDA, LLC
- APPLICANT: JPD ENTERPRISES OF FLORIDA, LLC
- ENGINEER: LAVENTURE & ZEISS ENGINEERING, INC. 774 W. MIDWAY ROAD, SUITE 34082, FORT PIERCE, FLORIDA 34982. PHONE: (772) 398-1520
- SURVEYOR: LAVENTURE & ZEISS ENGINEERING, INC. 774 W. MIDWAY ROAD, SUITE 34082, FORT PIERCE, FLORIDA 34982. PHONE: (772) 398-1520
- DESCRIPTION: THE SOUTH EAST QUARTER OF SECTION 24, TOWNSHIP 33 SOUTH, RANGE 39 EAST, LESS THE RIGHTS-OF-WAY FOR PUBLIC ROADS, SAID LANDS LYING AND BEING IN ST. LUCIE COUNTY, FLORIDA.
- PARCEL ID NO.: 2324-244-0003-0005
- TYPE OF PROJECT: PROPOSED TRUCK BAYS & STORAGE BUILDING
- PROJECT SIZE: 197,493 SQ. FT. (4.53 ACRES) GROSS AREA
- BUILDING SIZE: 7258 SQ. FT. (0.17 ACRES) (PROPOSED BUILDINGS) 3.7%
- FUTURE LAND USE: C3
- EXISTING ZONING: C3 (FORT PIERCE)
- FLOOD ZONE: ZONE X
- PARKING: REQUIRED 60 SPACES (HANDICAPPED = 1)
- DEVELOPMENT: BEGUN CONSTRUCTION MAY 2016
- UTILITY SERVICE: FORT PIERCE UTILITIES AUTHORITY
- WATER SERVICE: FORT PIERCE UTILITIES AUTHORITY
- SEWER SERVICE: FORT PIERCE UTILITIES AUTHORITY
- SITE DRAINAGE: THE STORMWATER MANAGEMENT CONSISTS OF AN EXISTING ON-SITE STORMWATER ANDREWE AVENUE AND WAS DESIGNED PER SOUTH FLORIDA WATER MANAGEMENT DISTRICT CRITERIA.

WVNE BUILDING CORPORATION
 2324-244-0003-0005
 TAX PARCEL: 2324-244-0003-0005
 ZONING: C3 (FORT PIERCE)

JPD ENTERPRISES OF FLORIDA, LLC
 2324-244-0003-0008
 O.R.B. 3608 PAGE 2949
 ZONING: C3 (ST. LUCIE COUNTY)



SUBJECT PROPERTY
 TAX PARCEL 2324-244-0002-000-5
 JPD ENTERPRISES OF FLORIDA, LLC
 O.R.B. 3608, PAGE 2949
 ZONING: C3 (FORT PIERCE)



SITE PLAN
 JPD ENTERPRISES OF FLORIDA, LLC
 PROPOSED TRUCK BAYS & STORAGE BUILDING

REVISIONS

NO.	DATE	BY	DATE
1	6/29/16	JPD	6/29/16
2	7/27/16	JPD	7/27/16
3	8/1/16	JPD	8/1/16
4	8/1/16	JPD	8/1/16
5	8/1/16	JPD	8/1/16
6	8/1/16	JPD	8/1/16
7	8/1/16	JPD	8/1/16
8	8/1/16	JPD	8/1/16
9	8/1/16	JPD	8/1/16
10	8/1/16	JPD	8/1/16
11	8/1/16	JPD	8/1/16
12	8/1/16	JPD	8/1/16
13	8/1/16	JPD	8/1/16
14	8/1/16	JPD	8/1/16
15	8/1/16	JPD	8/1/16
16	8/1/16	JPD	8/1/16
17	8/1/16	JPD	8/1/16
18	8/1/16	JPD	8/1/16

LAVENTURE & ZEISS ENGINEERING, INC.
 CONSULTING ENGINEERS
 774 W. MIDWAY ROAD, SUITE 34082
 FORT PIERCE, FLORIDA 34982
 PHONE: (772) 398-1520
 FAX: (772) 398-1521

DWG: 17/16
 DATE: 8/1/16
 SHEET: 1 OF 1
 JOB NO: 2016-0008

CRACKER BARREL OLD COUNTRY
 TAX PARCEL 2324-133-0001-000-7
 O.R.B. 665 PAGE 1614
 ZONING: C3 (FORT PIERCE)

