



TO : Nick Mimms, City Manager
FROM : Rebecca Grohall, Planning Director
RE : Parking Committee Update
DATE : August 10, 2016

Since the last meeting of the Parking Committee, several updates have been made.

The map showing the two hour parking limits (primarily on street in the downtown and in the former “JC Penney” lot) is attached.



New signage has been installed on the former JC Penney lot indicating the two hour parking limit enforced starting September 1st.

This is intended to help direct long term parkers into the parking garages and peripheral lots.

A visual check of the property at 10 am on a weekday indicated that the parking lot (which is typically full by 8 am) has many open parking spots.

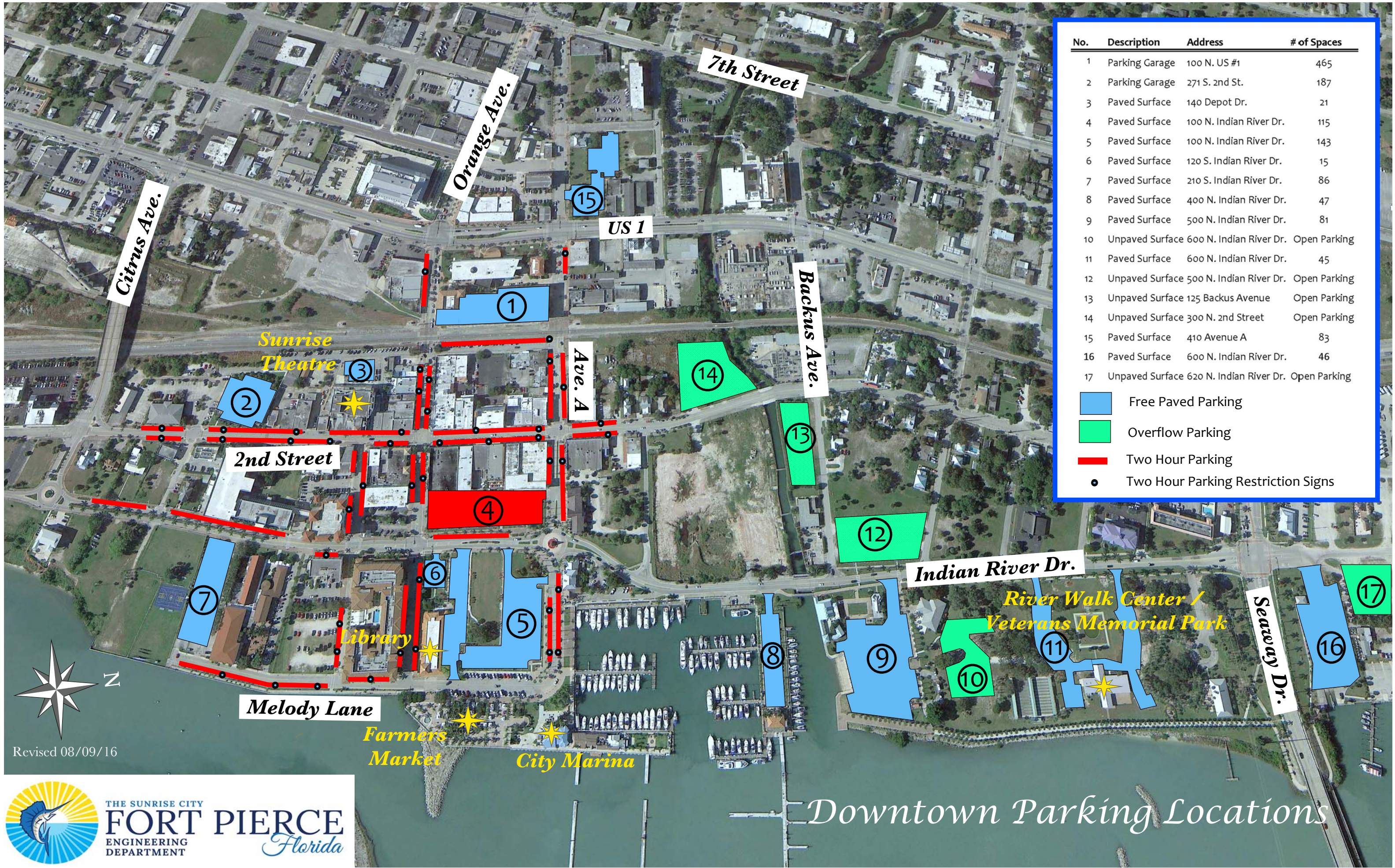


Staff from the County has assisted the City in this effort by making aesthetic improvements to the County's parking garage to increase its curb appeal. Additionally, the City and County have completed an interlocal agreement that "paves the way" literally for a resurfacing and stormwater improvement project on the Melody Lane lot between Indian River Drive and Melody Lane adjacent to St. Andrew's Episcopal Academy.

Code Enforcement staff has drafted an Ordinance that would change the jurisdiction of parking tickets to the City's Special Magistrate (from the Courts) and also sets a new fine system into place. This Ordinance had its first reading in August, and is headed for its second reading on August 15th. Likewise, on August 15th, the City Commission will review a Resolution to modify the Parking In Lieu of fee. The Parking in Lieu of fee was developed to give developers an option if they could not provide all the required parking on site. Currently, the fee is established at \$2,000 and the Parking Committee recommended the Commission consider an increase. The increase is also supported in the report from the Parking Consultant.

The City has also opened a parking lot on South Hutchinson Island, near the soon to be opened Square Grouper.





No.	Description	Address	# of Spaces
1	Parking Garage	100 N. US #1	465
2	Parking Garage	271 S. 2nd St.	187
3	Paved Surface	140 Depot Dr.	21
4	Paved Surface	100 N. Indian River Dr.	115
5	Paved Surface	100 N. Indian River Dr.	143
6	Paved Surface	120 S. Indian River Dr.	15
7	Paved Surface	210 S. Indian River Dr.	86
8	Paved Surface	400 N. Indian River Dr.	47
9	Paved Surface	500 N. Indian River Dr.	81
10	Unpaved Surface	600 N. Indian River Dr.	Open Parking
11	Paved Surface	600 N. Indian River Dr.	45
12	Unpaved Surface	500 N. Indian River Dr.	Open Parking
13	Unpaved Surface	125 Backus Avenue	Open Parking
14	Unpaved Surface	300 N. 2nd Street	Open Parking
15	Paved Surface	410 Avenue A	83
16	Paved Surface	600 N. Indian River Dr.	46
17	Unpaved Surface	620 N. Indian River Dr.	Open Parking

- Free Paved Parking
- Overflow Parking
- Two Hour Parking
- Two Hour Parking Restriction Signs

Revised 08/09/16

Downtown Parking Locations