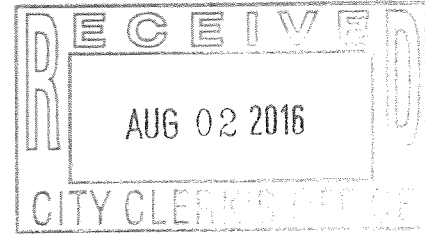
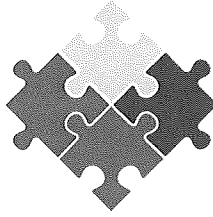


Frontline for Kids



ACADEMICS • NUTRITION • RECREATION • REALITY THERAPY COUNSELING

August 2, 2016

Board of Directors:

Joel Wynne

Wynne Building Corporation
Chairman

Gloria Johnson

Retired St. Lucie County Schools
Vice Chairwoman

Nick Mimms

Fort Pierce City Manager
Member

Kim Johnson

St. Lucie County Commissioner
Member

Denise Roberts

Coastline Insurance
Member

Peggy Harris

Retired St. Lucie County Schools
Member

Jerome Gayman

CEO/Executive Director

Dear Hon. Reggie Sessions:

Thanks for your meeting with me and your careful inspection of our plans for the children of Fort Pierce. The Frontline Program has enjoyed tremendous success over the past 16 years. Now, our waiting list has gradually grown to a breaking point.

For the past three summers, we had to turn many of the city's children away because we could not accommodate anymore than we have now at our facility. When we moved at our present facility from Lincoln Park Academy, it was apparent at the time that we had enough space for years to come. Boy, were we wrong!

As you know and read over the past years, the Frontline Program has produced many of the most successful children in the city who have returned to become contributing citizens. For example, we have former students like, Joselito Simon (Bsc. UCF), Fort Pierce Police Department, John Cesar (Bsc. FSU), social worker, Maria Lazcano (IRSC), office manager, and Roskoy Edmond (Bsc. UCF), US Navy (Japan), among many more.

Along those lines, the Wynne Charitable Foundation came to our rescue for the second time. However, Frontline needed other stake holders with vested interest in the welfare of the city's children. I am cognizant of the fact the city, county and every concern citizen has interests in the development of the children of Fort Pierce.

Even more so, our 2016 class consists of 21 graduates, our largest class ever. Most of this class' members are headed to major institution like: Fisk, Vanderbilt, UCF, FAMU, FAU, Bethune-Cookman University, IRSC, etc.

The children of Fort Pierce are very fortunate to have friends as Joel and Dina Wynne. We are appealing to the city of Fort Pierce for a partnership in the sum of \$50,000 (Fifty Thousand Dollars).

As always, we look forward to extending our services to the needy children of Fort Pierce and their families.

Kindest regards,

Jerome Gayman

16-55
Comm #

Sheet

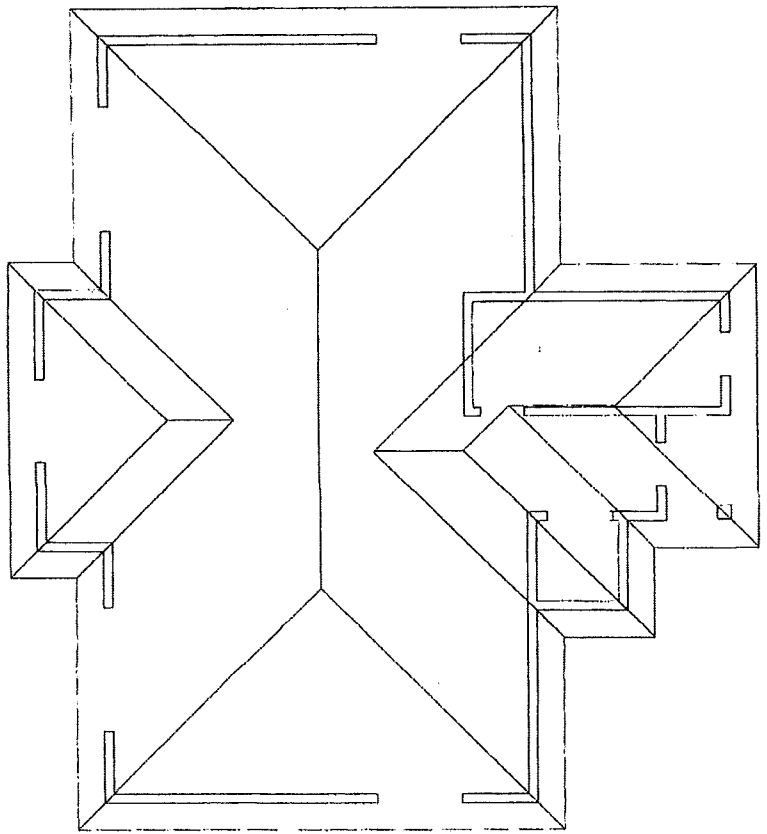
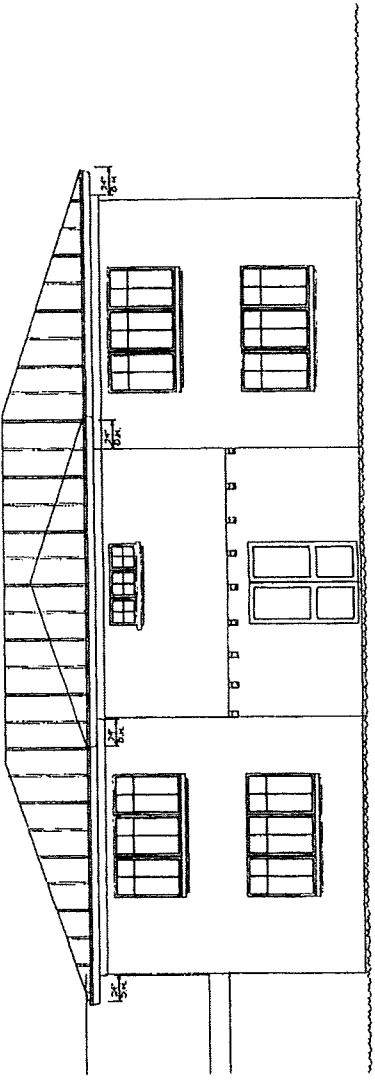
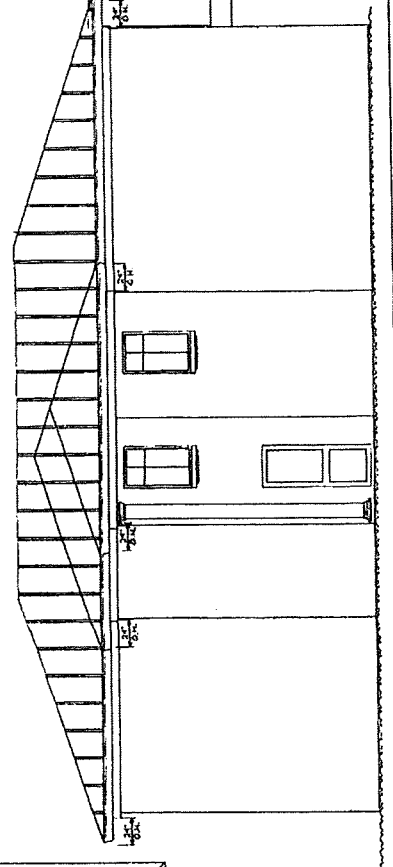
B

Bradley Braden A/A, PA
Architects - Planners
411 Cecelia Avenue
Fort Lauderdale, FL 33308
Tel: (754) 281-8588
Fax: (754) 281-8589
E-mail: braden@braden.com
Sheet: PL 2474 BAC000023

School classrooms
FRONTLINE

Fort Pierce

Date Drawn / Revisions:
5-3-88
Drawn by
C.C.U.
Checked by
D.R.B.



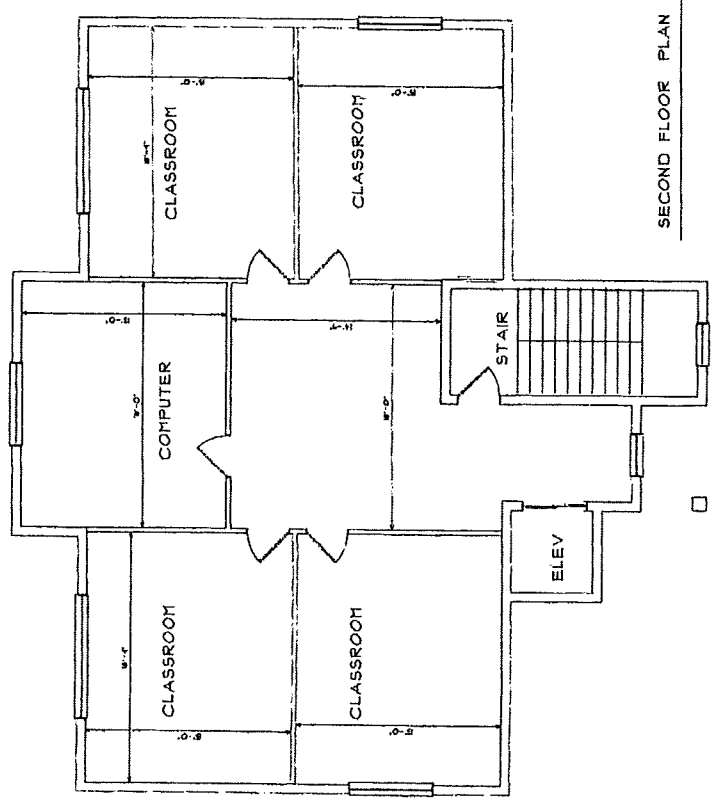
Sheet
3
Class #
16-55



Bradley & Braden, P.A.
Architects - Planners
411 Orange Avenue
Fort Pierce, FL 34931
Tel: (888) 281-8288
Fax: (888) 281-8288
E-Mail: braden@bradenpa.com
Sheet: 16-55-03

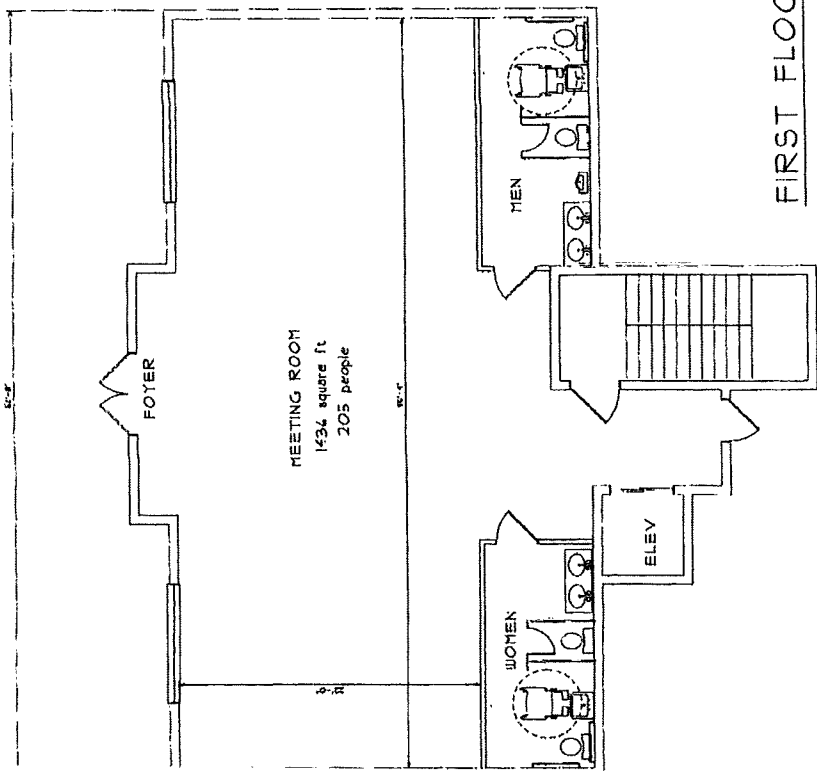
School Classroom
FRONTLINE
Fort Pierce

Date Drawn: 3-2-16
Drawn by: C.C.U.
Checked by: D.R.B.
Revised:



SECOND FLOOR PLAN 1/4"=1'-0"

Date Drawn: 5-2-8 Drawn by: C.O.U. Checked by: D.M.B. Revisions:	School classrooms FRONTLINE For: Price	Braden & Braden AIA, PA Architects - Planners 411 Clare Avenue Ft. Lauderdale, FL 33309 Tel: (305) 261-8288 Fax: (305) 261-8289 E-mail: braden@braden.com Street #: 3194 MAC000023	Sheet: B 2. of Case #: 16-55
---	---	---	--



FIRST FLOOR PLAN 1/4"