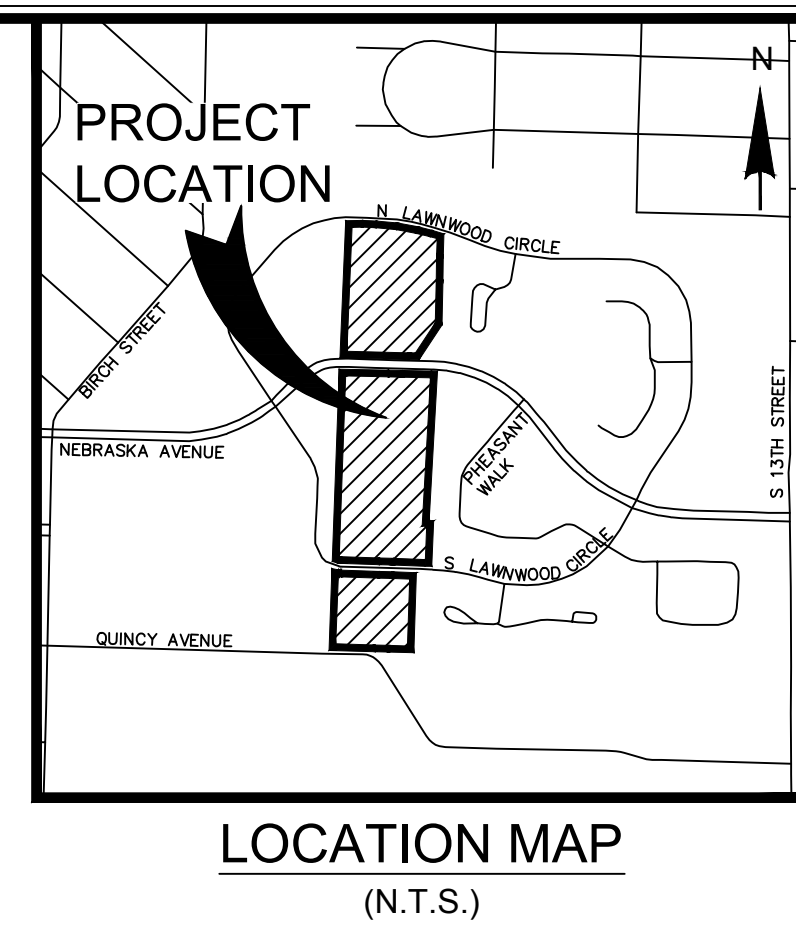
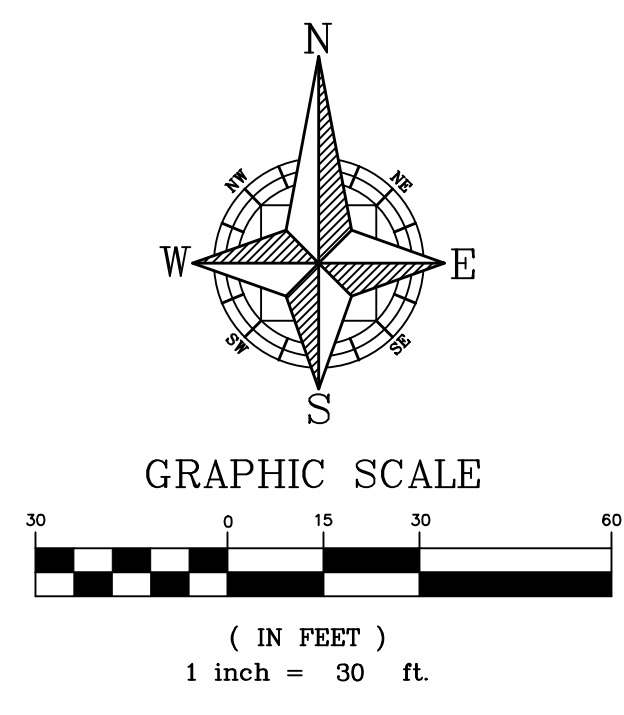
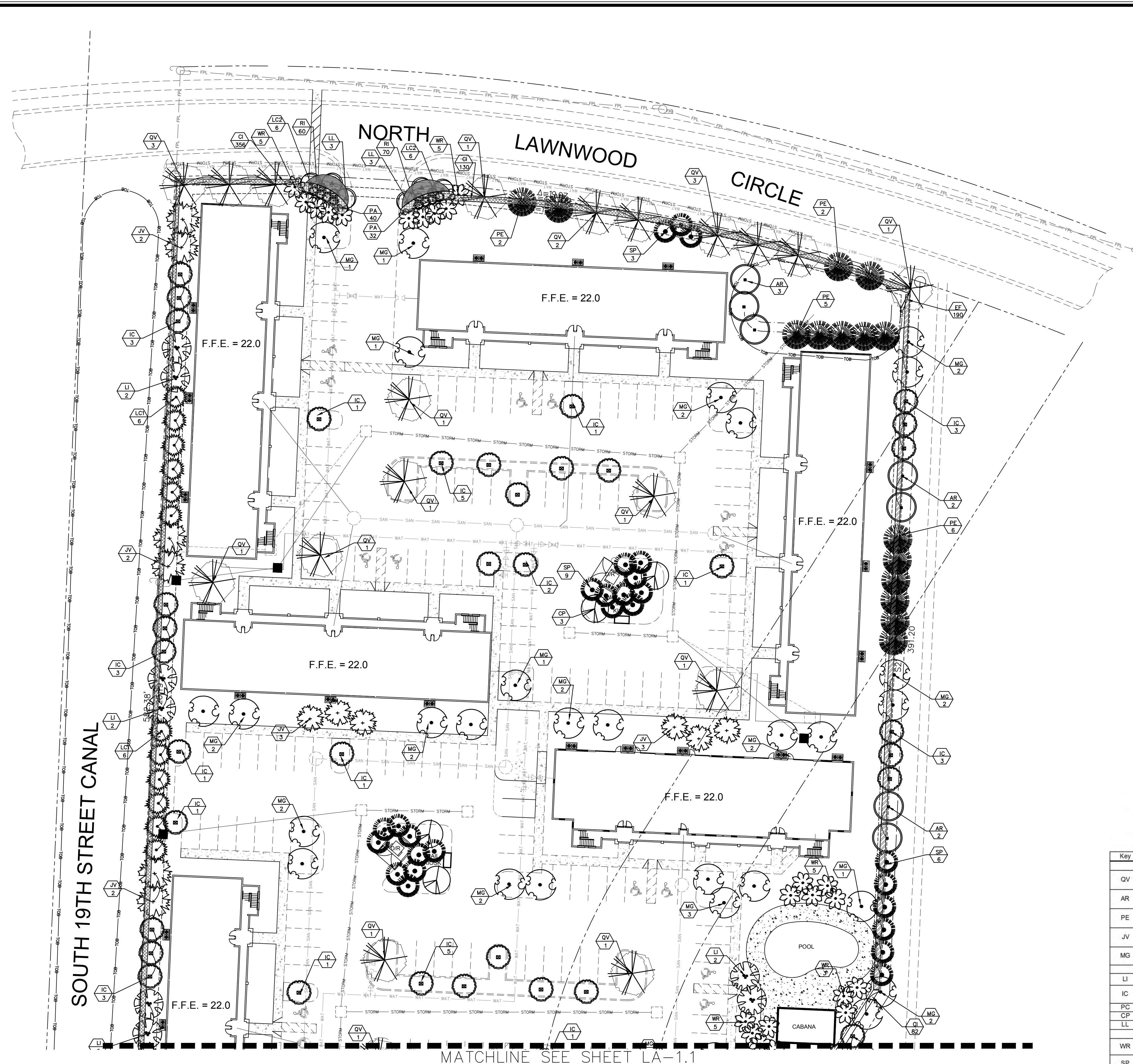




Landscape Plans (Overall Site & Individual Building)

J:\38890\5.9 Drawings\591sc\Layouts\38890-LandscapePlan ALI.dwg Modified: 3/16/2016 By: becky.williams Plotted By: becky.williams



SOUTH 19TH STREET CANAL

MATCHLINE SEE SHEET LA-1.1

**Mayfair
PLANT MATERIALS LIST**

Hardiness Zone 9b

Native plants and ecological communities as determined by the FDOACS, UFIFAS, FDEP-Florida Land Use Cover Classification System.
Xeriscape principles as determined by the South Florida Water Management District "Waterwise" Xeriscape Plant Guide
Compliance for planting adjacent to overhead electrical wires as determined by Florida Power & Light, Administrative Services

Key	Scientific Name	Common Name	Native	Xen	Height x Spread / Description	Spacing	Qty	SUBT	
LARGE TREES									
greater than 30 ft. at maturity									
QV	Quercus virginiana	Live Oak	Yes	High	12' high x 6' spread, 2-1/2" DBH, 4-1/2" CT., field grown	per plan	59	297	
AR	Acer rubrum	Red Maple	Yes	Mod.	12' high x 5' spread, 2-1/2" DBH, 4-1/2" CT., field grown	per plan	50		
PE	Pinus Elliotti	Slash Pine	Yes	High	12' high x 5' spread, 2-1/2" DBH, 4-1/2" CT., field grown	per plan	79		
JV	Juniperus virginiana	Southern Red Cedar	Yes	High	10' high x 4' spread, full, 45 gal. or field grown	per plan	39		
MG	Magnolia grandiflora	Southern Magnolia	Yes	Mod.	12' high x 5' spread, 2-1/2" DBH, 4-1/2" CT., field grown	per plan	70		
SMALL TREES									
less than 25 ft. at maturity									
LI	Lagerstroemia indica "Muskogee"	Crepe Myrtle "Pink"	No	High	10' high x 4' spread, multi-trunk, 45 gal.	per plan	20	148	
IC	Ilex cassine	Dahoon Holly	Yes	High	10' high x 4' spread, full, 30 gal./45 gal., Air Root Pruned Container	per plan	85		
PC	Prunus caroliniana	Cherry Laurel	Yes	High	10' high x 4' spread, 4 CT., 45 gal. or field grown	per plan	0		
CP	Caesalpinia pulcherrima	Dwarf (Yellow) poinciana	No	High	10' high x 4' spread, 4 CT., 45 gal. or field grown	per plan	19		
LL	Ligustrum lucidum	Japanese privet	No	High	10' high x 4' spread, multi-trunk, 45 gal.	per plan	24		
WR	Washingtonia robusta	Washingtonia Palm	No	High	1/3 @ 16' high, 1/3 @ 20' high, 1/3 @ 24' high; staggered heights in all groupings, field grown	per plan	67		
SP	Sabal palm etto	Cabbage Palm	Yes	High	14' high to 20' high, staggered heights in all groupings, booted, field grown	per plan	60		
LC1	Livistona chinensis	Chinese Fan Palm	No	High	10' CT., 16" OA full heads, container or field grown	per plan	42		
LC2	Livistona chinensis	Chinese Fan Palm	No	High	6" OA, full to base, 7 gal.	per plan	48		
SHRUBS									
CI	Chrysobalanus icaco	Cocoplum "Red Tip"	Yes	High	24" OA, full to base, 3 gal.	24" OC	772	2,033	
EF	Eugenia foetida	Spanish Stopper	Yes	High	24" OA, full to base, 3 gal.	24" OC	613		
PA	Plumbago auriculata	Plumbago "Imperial Blue"	No	High	18" OA, full, 3 gal.	24" OC	209		
RI	Raphiolepis indica	Indian Hawthorn	No	High	12" OA, full, 3 gal.	18" OC	439		
							Total	2,695	

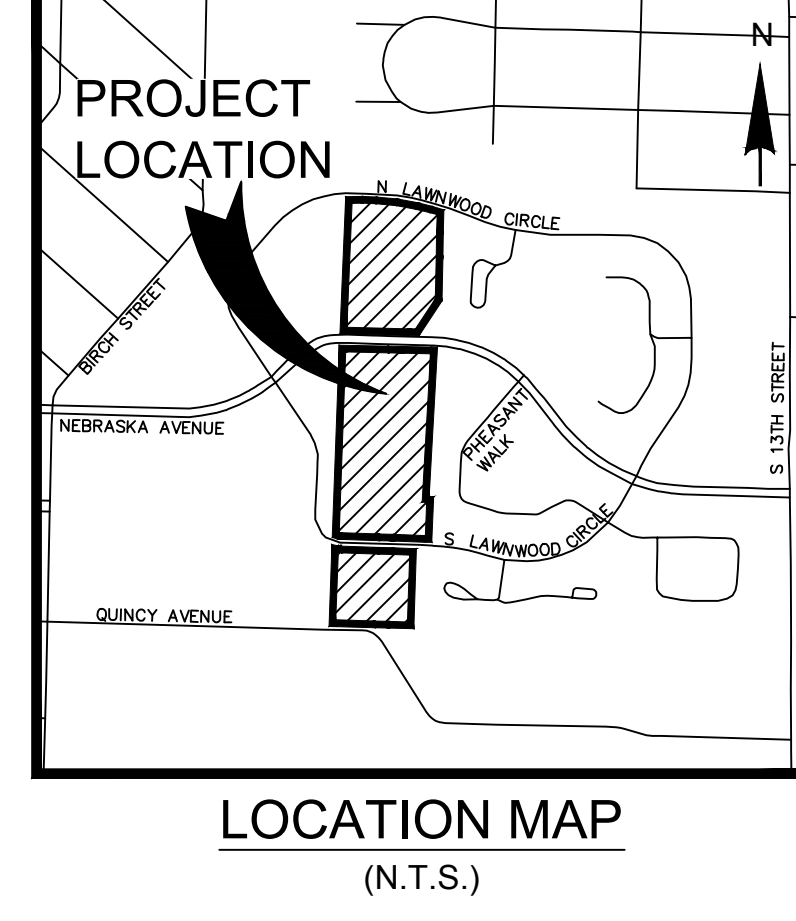
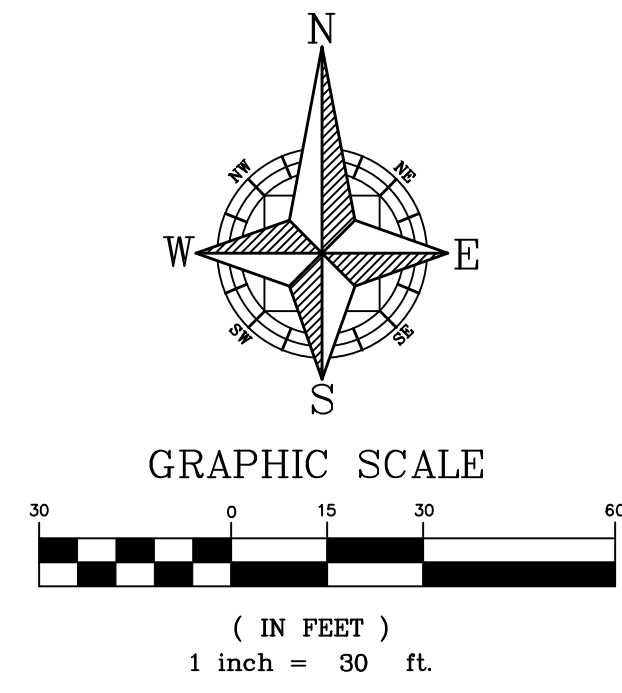
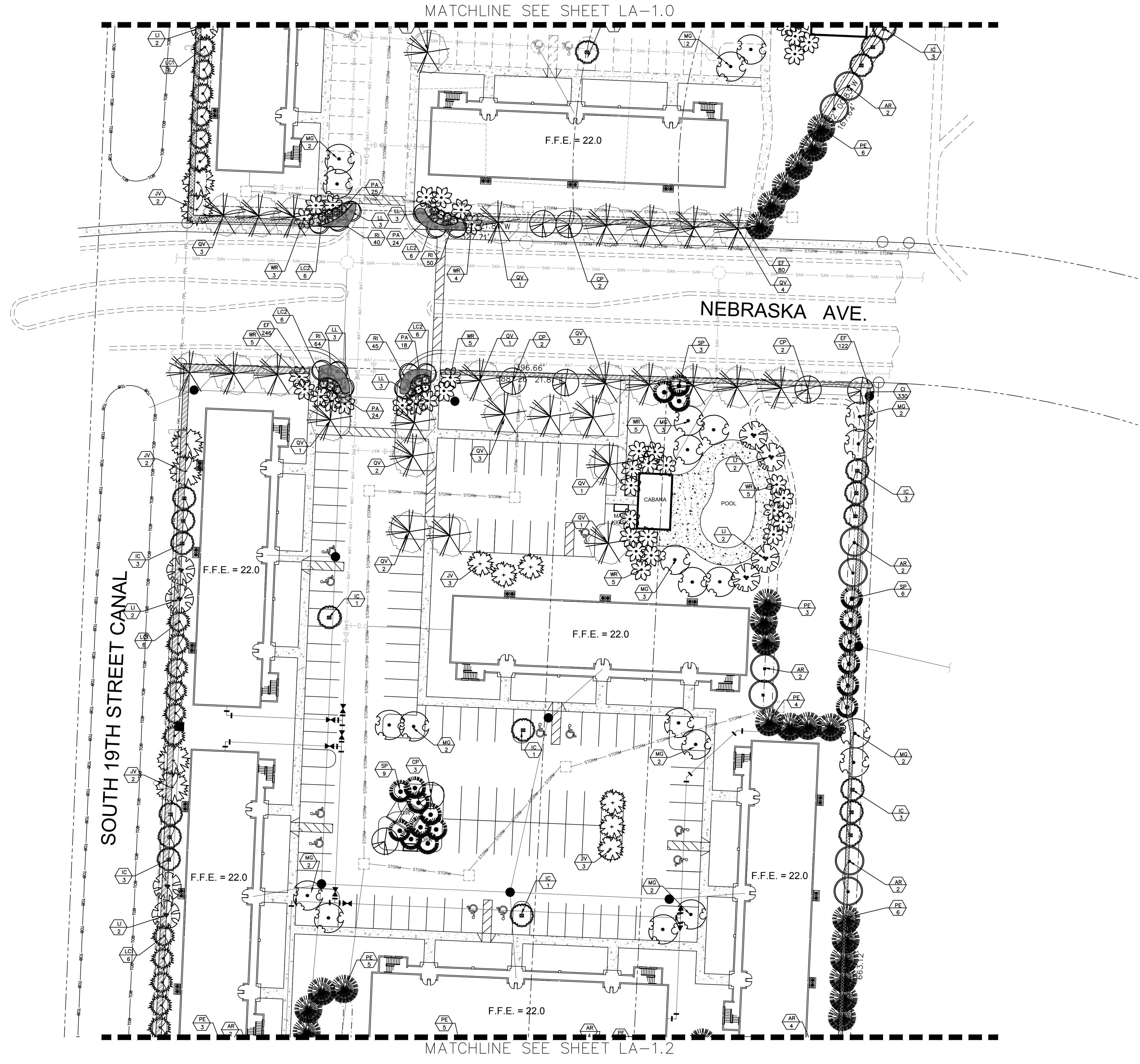
NOTE: ALL PROPOSED UNDERGROUND UTILITIES SHALL BE MODIFIED TO AVOID CONFLICTS WITH REQUIRED TREES IN LANDSCAPE ISLANDS / VUA AREAS. SEE ENGINEERING PLANS.
NOTE: PURSUANT TO TO FPL "RIGHT-TREE, RIGHT PLACE" GUIDELINES ALL PERIMETER BUFFER TREES IN CONFLICT WITH OVERHEAD POWER LINES HAVE BEEN ADJUSTED FOR COMPLIANCE.
NOTE: SOD TO BE INSTALLED IN ALL PERVIOUS AREAS NOT CONTAINING SHRUBS, GROUNDCOVER OR ALTERNATE LANDSCAPE FEATURES (MULCH, ROCK).

NOTE: ALL AREAS INDICATED FOR SOD SHALL BE INSTALLED WITH ST. AUGUSTINE "FLORITAM" SOD UNLESS ALTERNATE NOTED. Total Native Plants 1,827 Native % of Total 67.8%
NOTE: ALL PLANTS SHALL BE INSTALLED AT SIZE INDICATED UNDER THE SPECIFICATIONS. CONTAINER SIZE LISTED IS FOR REFERENCE OR ESTIMATING ONLY. Total Drought Tolerant Plants 2,575 Drought Tol. % of Total 95.5%

DRAWN: BW		SCALE: 1" = 30'	PROJECT: 38890	SHEET: LA-1.0	DATE: 3/16/2016
DESIGNED:					
CHECKED: RW		<p>IBI GROUP FLORIDA ENGINEERING BUSINESS NO. 2966</p>			
DATE:					
DRAWN: BW		<p>MAYFAIR FORT PIERCE, FLORIDA LANDSCAPE PLAN</p>			
DESIGNED:		<p>IBI GROUP (FLORIDA) INC. PLANNERS SURVEYORS ENVIRONMENTAL CONSULTANTS LANDSCAPE ARCHITECTS</p> <p>2200 PARK CENTRAL BLVD. N. SUITE 301 MAITLAND, FLORIDA 32751 (407) 860-2120</p>			
CHECKED: RW		<p>ORLANDO POMPANO BEACH</p>			
DATE:		<p>REV. DATE DESCRIPTION</p>			

NOT FOR CONSTRUCTION
3/16/16

J:\38890\5.9 Drawings\591sc\Layouts\38890-LandscapePlan ALT.dwg Modified: 3/16/2016 By:becky.williams Plotted By:becky.williams



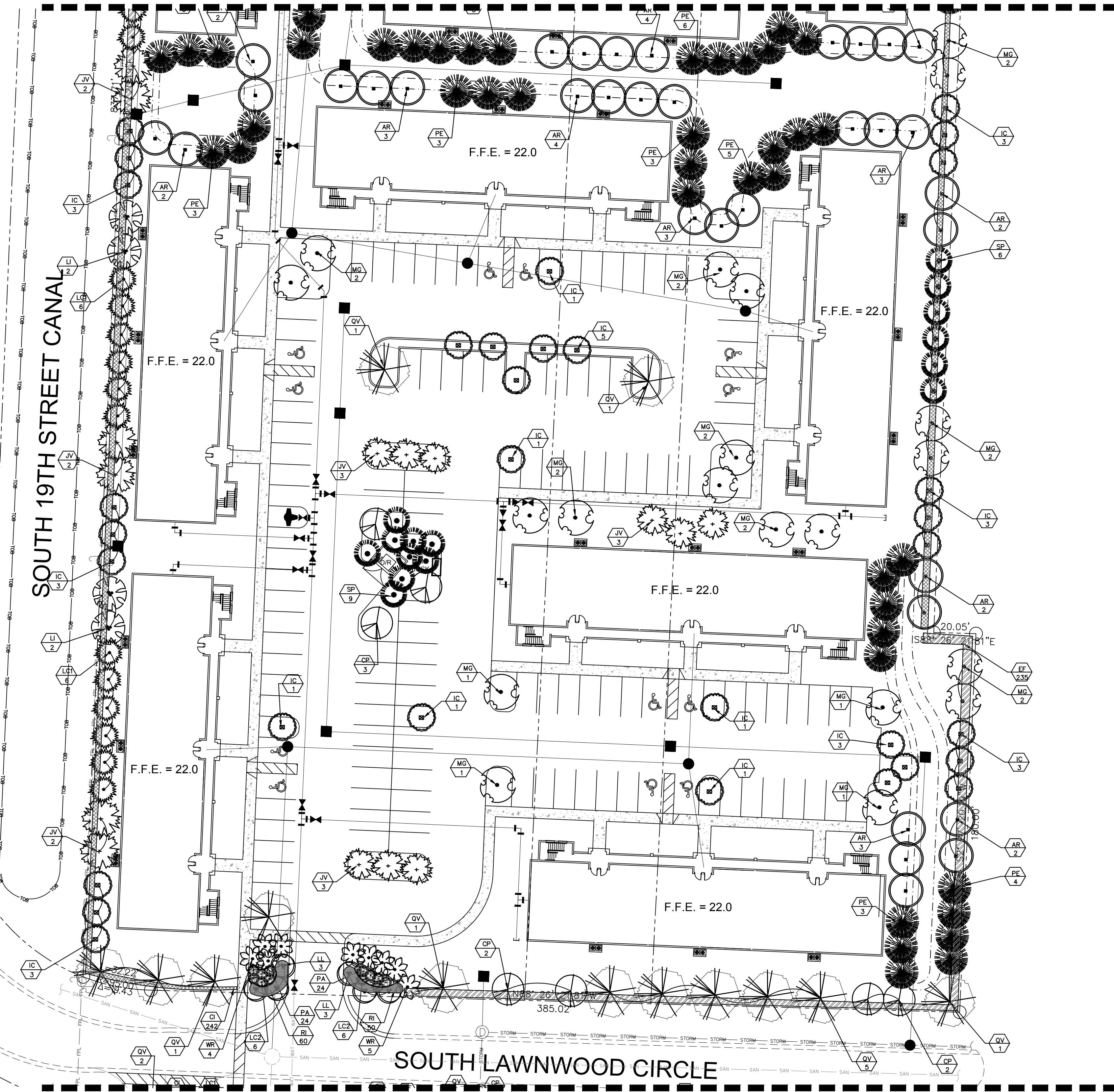
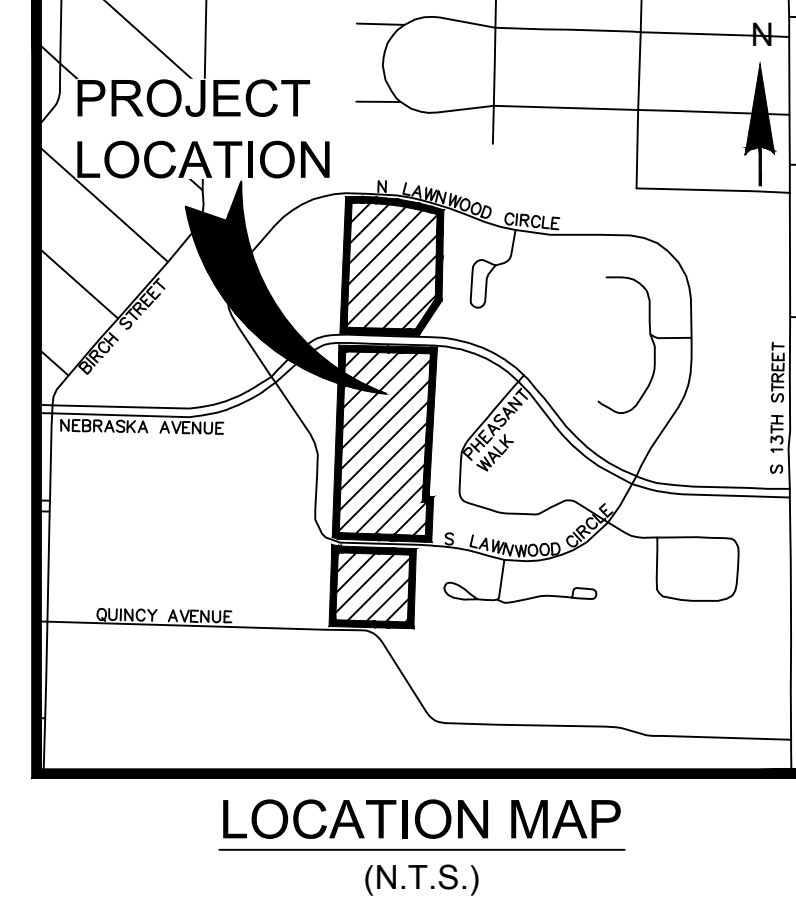
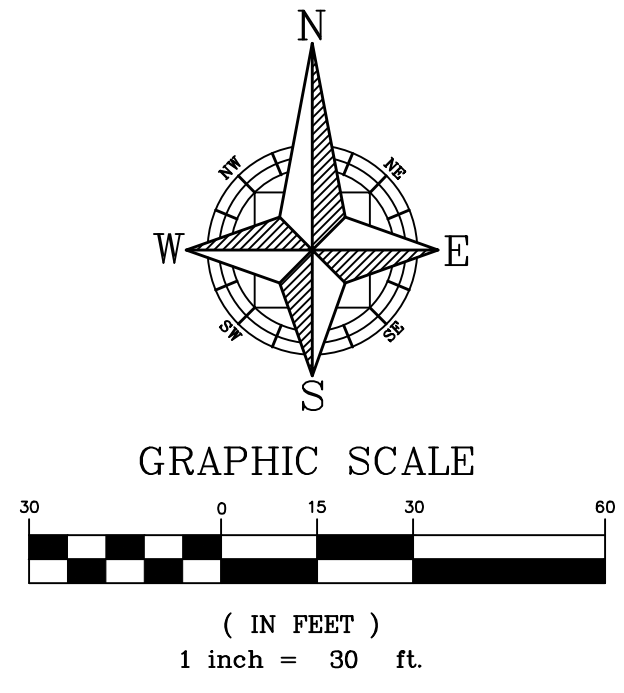
NOTE: SEE SHEET LA-1.0 FOR PLANT MATERIALS LIST.
 NOTE: ALL PROPOSED UNDERGROUND UTILITIES SHALL BE MODIFIED TO AVOID CONFLICTS WITH REQUIRED TREES IN LANDSCAPE ISLANDS / VUA AREAS. SEE ENGINEERING PLANS.

IBI GROUP (FLORIDA) INC. ENGINEERS ARCHITECTS SURVEYORS PLANNERS LANDSCAPE ARCHITECTS ENVIRONMENTAL CONSULTANTS 2200 PARK CENTRAL BLVD. N. SUITE 101 MAITLAND, FLORIDA 32751 (407) 866-2120 ORLANDO POMPANO BEACH		PROJECT LOCATION (N.T.S.)
MAYFAIR FORT PIERCE, FLORIDA LANDSCAPE PLAN		REV. DATE DESCRIPTION A B C D E F G H I J K L M N O P Q R S T U V W X Y Z
SCALE 1" = 30' PROJECT 38890 SHEET LA-1.1	DRAWN: BW DESIGNED: CHECKED: RW DATE: 3/16/2016	NOT FOR CONSTRUCTION 3/16/16

J:\38890\5.9 Drawings\Layouts\38890-LandscapePlan ALT.dwg Modified: 3/16/2016 By:becky.williams Plotted By:becky.williams

MATCHLINE SEE SHEET LA-1.1

MATCHLINE SEE SHEET LA-1.3

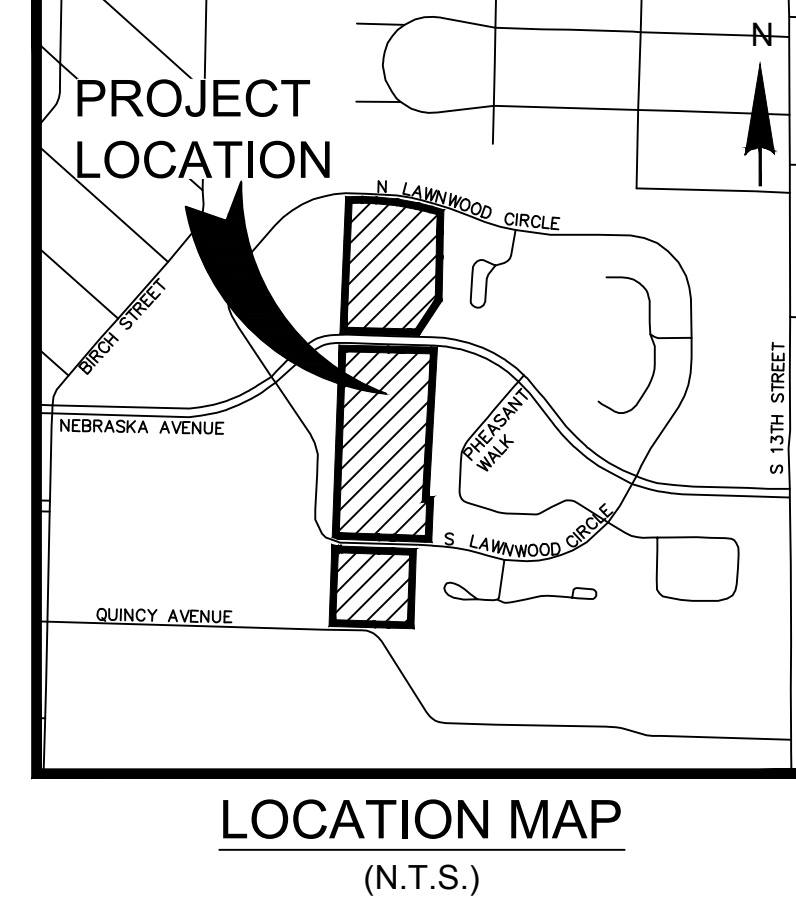
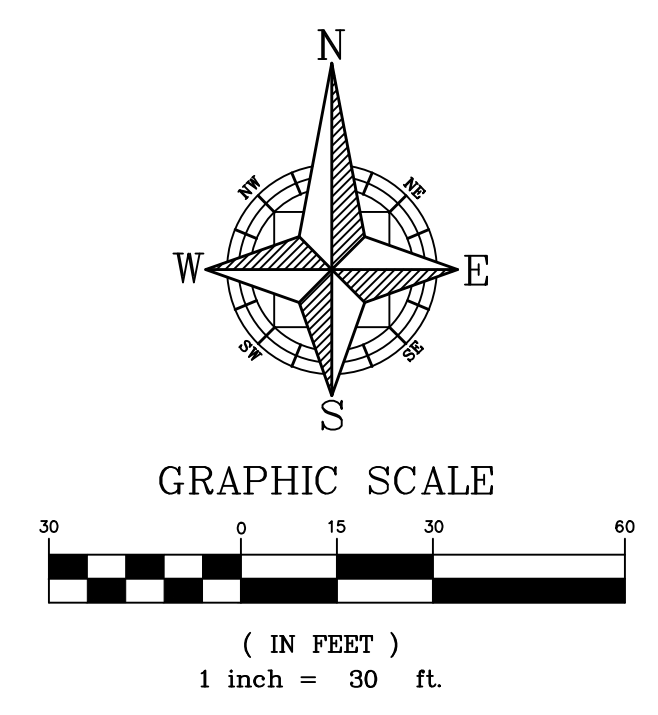
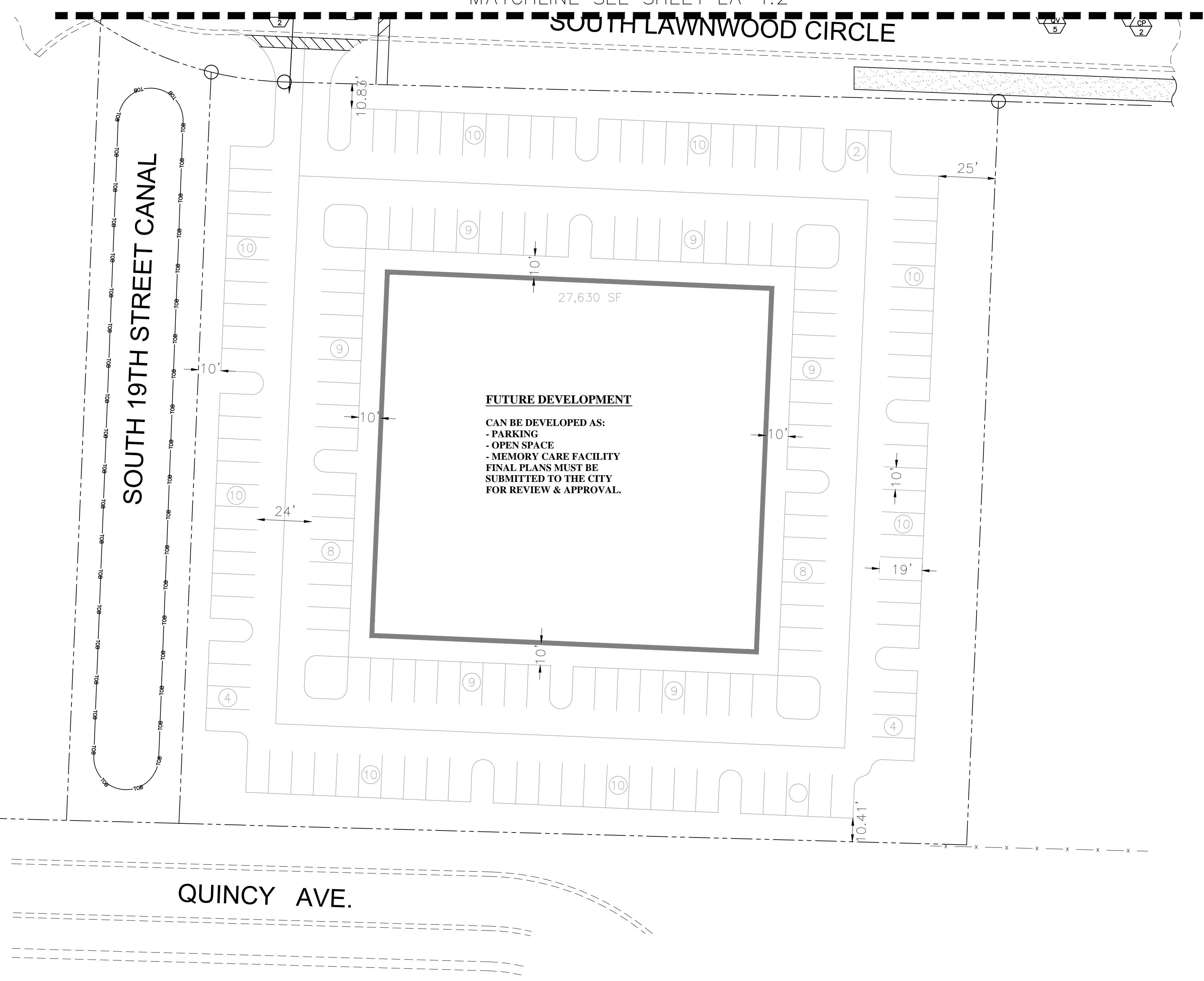


IBI GROUP (FLORIDA) INC. ENGINEERS ARCHITECTS SURVEYORS PLANNERS http://www.ibigroup.com ENVIRONMENTAL CONSULTANTS 2200 PARK CENTRAL BLVD. N. SUITE 101 FORT PIERCE, FLORIDA 33904 MAITLAND, FLORIDA 32751 (407) 866-2120		ORLANDO POMPANO BEACH
MAYFAIR FORT PIERCE, FLORIDA		DATE: 3/16/2016
LANDSCAPE PLAN		REV. DESCRIPTION BY
SCALE: 1" = 30' PROJECT: 38890 SHEET: LA-1.2	DRAWN: BW DESIGNED: CHECKED: RW DATE: 3/16/2016	REV. DESCRIPTION BY
IBI GROUP FLORIDA ENGINEERING BUSINESS NO. 2966		NOT FOR CONSTRUCTION 3/16/16

NOTE: SEE SHEET LA-1.0 FOR PLANT MATERIALS LIST.
 NOTE: ALL PROPOSED UNDERGROUND UTILITIES SHALL BE MODIFIED TO AVOID CONFLICTS WITH REQUIRED TREES IN LANDSCAPE ISLANDS / VUA AREAS. SEE ENGINEERING PLANS.

J:\38890\5.9 Drawings\591sc\layouts\38890-LandscapePlan ALT.dwg Modified: 3/16/2016 By: becky.williams Plotted By: becky.williams

MATCHLINE SEE SHEET LA-1.2
SOUTH LAWNWOOD CIRCLE



QUINCY AVE.

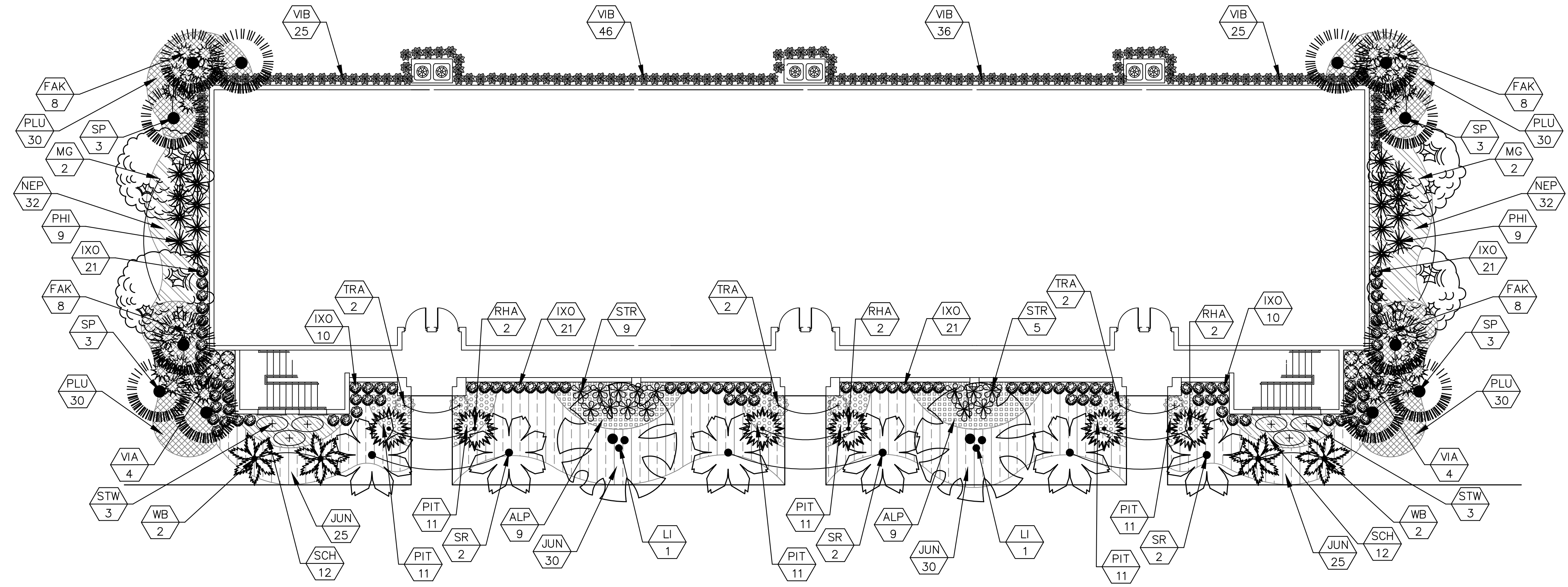
<p>IBI GROUP (FLORIDA) INC. <small>ENGINEERS SURVEYORS PLANNERS</small> <small>LANDSCAPE ARCHITECTS ENVIRONMENTAL CONSULTANTS</small> <small>2300 MAILAND CENTER PARKWAY SUITE 101 FORT PIERCE, FLORIDA 33904</small> <small>MAITLAND, FLORIDA 32751 POMPANO BEACH, FLORIDA 33064</small> <small>(407) 860-2120 ORLANDO POMPANO BEACH</small></p>		<p>REV. DATE DESCRIPTION</p> <p>BY</p>
<p>MAYFAIR FORT PIERCE, FLORIDA</p>		<p>IBI GROUP (FLORIDA) INC.</p>
<p>LANDSCAPE PLAN</p>		<p>DATE: 3/16/2016</p>
<p>SCALE: 1" = 30'</p>	<p>DRAWN: BW</p>	<p>PROJECT: 38890</p>
<p>SHEET: LA-1.3</p>	<p>DESIGNED:</p>	<p>CHECKED: RW</p>
<p>IBI GROUP <small>FLORIDA ENGINEERING BUSINESS NO. 2966</small></p>		<p>DATE: 3/16/2016</p>
<p>NOTE: SEE SHEET LA-1.0 FOR PLANT MATERIALS LIST.</p> <p>NOTE: ALL PROPOSED UNDERGROUND UTILITIES SHALL BE MODIFIED TO AVOID CONFLICTS WITH REQUIRED TREES IN LANDSCAPE ISLANDS / VJA AREAS. SEE ENGINEERING PLANS.</p>		
<p>NOT FOR CONSTRUCTION</p>		

NOTE: SEE SHEET LA-1.0 FOR PLANT MATERIALS LIST.
NOTE: ALL PROPOSED UNDERGROUND UTILITIES SHALL BE MODIFIED TO AVOID CONFLICTS WITH REQUIRED TREES IN LANDSCAPE ISLANDS / VJA AREAS. SEE ENGINEERING PLANS.

NOT FOR CONSTRUCTION
3/16/16

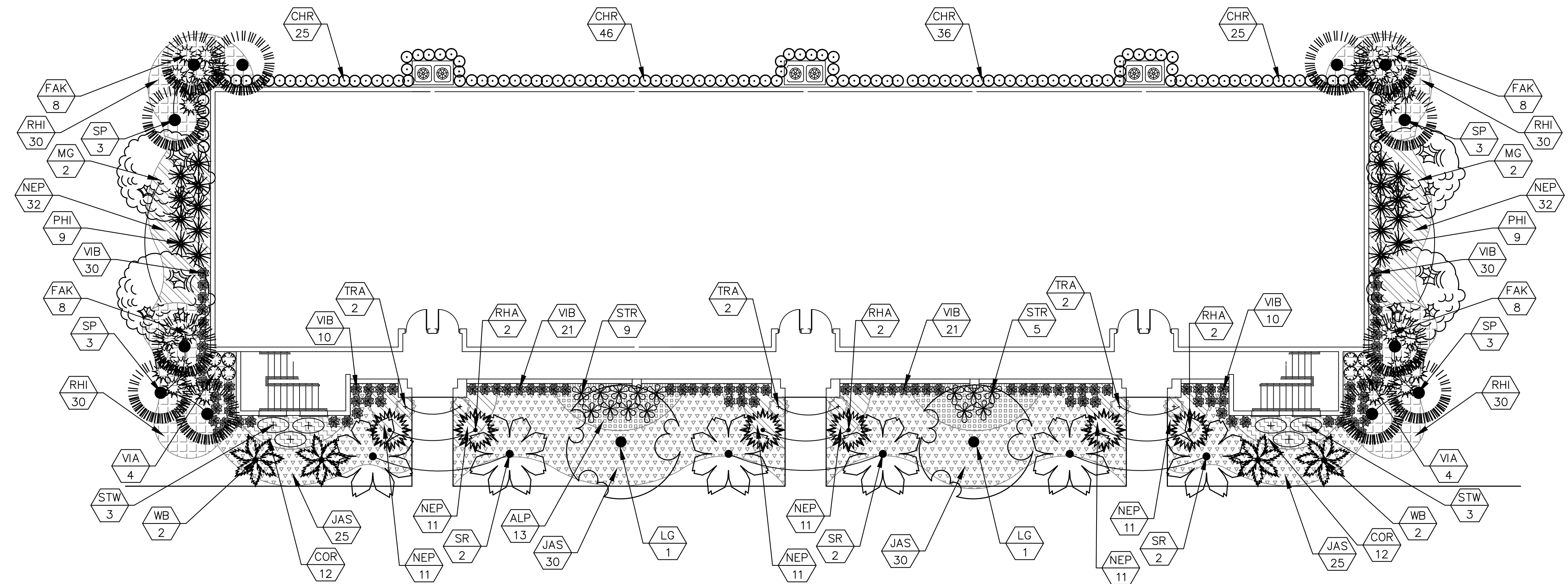
12 Unit Typical Plant List

	Sym	Key	Qty.	Crt.	Scientific/Common Name	Ht.	Spr.	Remarks
Trees and Palms	SR	6	1:1	QUEEN PALM STAGNUS ROMANOFFIANA	12'	GW	12' GW, MATCHED FULL HEAVY HEADS NO SCARRED TRUNKS	
	WB	4	1:1	FOXTAIL PALM WODYETIA BIFURCATA	6'	GW	6' GREY WOOD, MATCHING HEADS MIN. 9 FRONDS, NO SCARRED TRUNKS	
	SP	12	3:1	SABAL PALM SABAL PALMETTO 'WIBOOTS'	8'-10'		VARIED HEIGHTS, BOOTED TRUNKS MINIMUM 8' CT. TRUNKS WITH 4 STAGGERED FULL HEADS	
	LI	2	1:1	CREPE MYRTLE LASESTROEMIA INDICA	10'	5'	MULTI-TRUNK STANDARD, 3 TRUNKS MINIMUM MIN. 4' CT., FULL MATCHED	
	MG	4	1:1	'LITTLE GEM' MAGNOLIA MAGNOLIA GRANDIFLORA 'LITTLE GEM'	12'	5'	SINGLE STRAIGHT TRUNK, 2.5" D.B.H. MIN. 5' CT.	
	LG	2		WAX LIGUSTRUM LIGUSTRUM LUCIDUM	8'	5'	MULTI-TRUNK STANDARD 5 TRUNKS MINIMUM MIN. 4' CT., FULL MATCHED	
Accents	STW	6		WHITE BIRD OF PARADISE STRELTZIA NICOLAI	36"	36"	7 STEMS MIN. MATCHED 7 GALLON	
	STR	14		DWARF BIRD OF PARADISE STRELTZIA REGINAE	48"	48"	7 GALLON, FULL MIN. 6.5 FRONDS	
	RHA	6		LADY PALM RHAPIS EXCELSA	48"	36"	7 GALLON, FULL TO BASE MATCHED	
	ALP	18		VARIEGATED SHELL GINGER ALPINA ZERUMBET 'VAREGATA'	18"	24"	FULL TO BASE MIN. 3 GALLON, 36" O.C.	
	COR	24		HAWAIIAN TI PLANT CORDYLINE TERMINALIS 'BOLERO'	36"	24"	FULL 5 STEMS MIN. 3 GALLON	
Shrubs and Hedging	VIA	8		AWABUKI VIBURNUM VIBURNUM ODORATISSIMUM 'AWABUKI'	36"	30"	FULL TO BASE 3 GALLON, 36" O.C.	
	PHI	16		PHILODENDRON PHILODENDRON SELLOUM	42"	36"	FULL TO BASE MIN. 7 GALLON, 48" O.C.	
	IXO	104		IXORA IXORA COCCINEA 'JUNGLE FLAME'	24"	24"	FULL TO BASE 3 GALLON, 24" O.C.	
	VIB	132		SANDAKWIA VIBURNUM VIBURNUM SUSPENSUM	24"	24"	FULL TO BASE 3 GALLON, 24" O.C.	
	FAK	32		FAKAMATCHEE GRASS TRIPSACUM DACTYLOIDES	24"	24"	FULL TO BASE, MATCHED 3 GALLON, 36" O.C.	
	CHR	132		COCOPALM CHRYSOBALANUS ICAGO	24"	24"	FULL TO BASE 3 GALLON, 24" O.C.	
Groundcovers	PLU	120		PLUMBAGO PLUMBAGO AURICULATA 'IMPERIAL BLUE'	18"	18"	FULL TO BASE 3 GALLON, 24" O.C.	
	JAS	110		WAX JASMINE JASMINUM VOLUBILE	18"	18"	FULL 1 GALLON, 18" O.C.	
	NEP	130		FISHTAIL FERN NEPHROLEPIS FALCATA 'FURCANS'	12"	12"	FULL 1 GALLON, 18" O.C.	
	SCH	24		VARIEGATED SCHEFFLERA SCHEFFLERA ARBORICOLA 'VAREGATA'	24"	18"	FULL TO BASE MIN. 3 GALLON, 24" O.C.	
	PIT	66		VARIEGATED TOBIRA PITTOSPRUM PITTOSPORUM TOBIRA 'VAREGATA'	8"	8"	FULL TO BASE 1 GALLON, 18" O.C.	
	RHI	120		INDIAN HAWTHORN 'WHITE' RHAPHIOLEPIS INDICA 'ALBA'	18"	18"	FULL TO BASE 3 GALLON, 24" O.C.	
	JUN	110		BLUE RUG JUNIPER JUNIPERUS HORIZONTALIS 'WILTONII'	12"	18"	FULL TO BASE 3 GALLON, 24" O.C.	
	TRA	6		CONFEDERATE JASMINE TRACHELOSPERMUM JASMINOIDES			3 GALLON, FULL MIN. 5 RUNNERS, MIN. 30" LONG ATTACH TO FENCE / TRELLIS	
	SOD	SOD	XX,XXX S.F.		ST. AUGUSTINE FLORATUM STENOCHAPRUM SECUNDATUM			SOLID SOD STAGGER SEAMS FIELD VERIFY SOD AREAS



SUN EXPOSURE

12 UNITS



SHADE EXPOSURE

12 UNITS

IBI GROUP (FLORIDA) INC.
 ENGINEERS ARCHITECTS SURVEYORS PLANNERS ENVIRONMENTAL CONSULTANTS
 2200 PARK CENTRAL BLVD. N. SUITE 100
 POMPANO BEACH, FLORIDA 33064
 (954) 974-2200
 ORLANDO POMPANO BEACH

MAYFAIR FORT PIERCE, FLORIDA
LANDSCAPE TYPICALS

SCALE: 1" = 10'
 PROJECT: 38890
 SHEET: LA-2.1
 DATE: 3/16/2016

IBI GROUP
 FLORIDA ENGINEERING
 BUSINESS NO. 2966

NOT FOR CONSTRUCTION
 3/16/16

J:\38890\5.9 Drawings\Layouts\38890-LandscapePlan_ALT.dwg Modified: 3/16/2016 By:becky.williams Plotted By:becky.williams

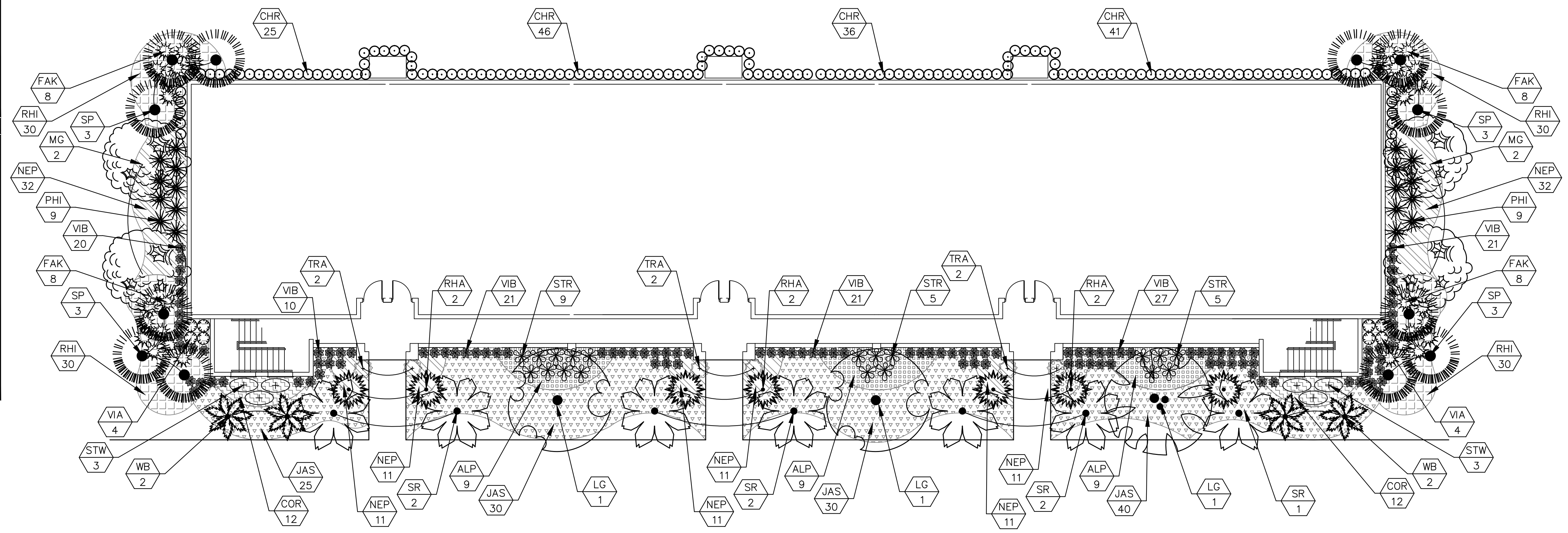
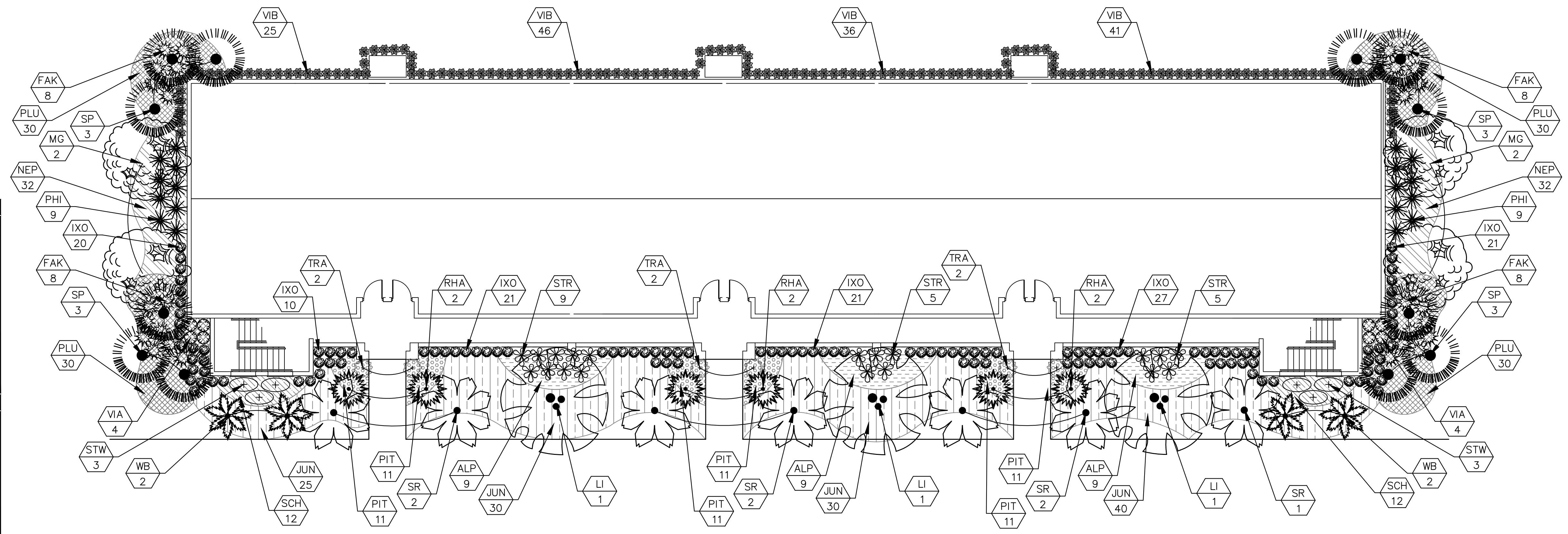
14 Unit Typical Plant List

Sym	Key	Qty.	Crt.	Scientific/Common Name	Ht.	Spr.	Remarks
BR	6	11		QUEEN PALM SYAGRUS ROMANOFFIANA	12' GW		12' GW, MATCHED, FULL HEAVY HEADS, NO SCARRED TRUNKS
WB	4	11		FOXTAIL PALM WOODYETIA BIFURCATA	6' GW		6' GREY WOOD, MATCHING HEADS, MIN. 9' FRONDS, NO SCARRED TRUNKS
SP	12	31		SABAL PALM SABAL PALMETTO 'WIBOOT'S'	6'-10'		VARIED HEIGHTS, BOOTED TRUNKS, MINIMUM 5' CT, TRUNKS WITH 4 STAGGERED FULL HEADS
LI	2	11		CREPE MYRTLE LAGERSTROEMIA INDICA	10'	5'	MULTI TRUNK STANDARD, 3 TRUNKS MINIMUM, MIN. 4' CT., FULL MATCHED
MG	4	11		LITTLE GEM MAGNOLIA MAGNOLIA GRANDIFLORA 'LITTLE GEM'	12'	5'	SINGLE STRAIGHT TRUNK, 2.5" D.B.H. MIN. 5' CT.
LG	2			WAX LIGUSTRUM LIGUSTRUM LUCIDUM	8'	5'	MULTI TRUNK STANDARD, 3 TRUNKS MINIMUM, MIN. 4' CT., FULL MATCHED

Sym	Key	Qty.	Scientific/Common Name	Ht.	Spr.	Remarks
STW	6		WHITE BIRD OF PARADISE STRELTZIA NICOLAI	36"	36"	7 STEMS MIN, MATCHED 7 GALLON
STR	19		DWARF BIRD OF PARADISE STRELTZIA REGINAE	48"	48"	7 GALLON, FULL, MIN. 8" FRONDS
RHA	6		LADY PALM RHAPIS EXCELSA	48"	36"	7 GALLON, FULL TO BASE, MATCHED
ALP	27		VAREGATED SHELL GINGER ALPINA ZERUMBEI 'VAREGATA'	18"	24"	FULL TO BASE, MIN. 3 GALLON, 36" O.C.
COR	24		HAWAIIAN TI PLANT CORDYLINE TERMINALIS 'BOLERO'	36"	24"	FULL 5 STEMS MIN, 3 GALLON

Sym	Key	Qty.	Scientific/Common Name	Ht.	Spr.	Remarks
VIA	6		AWABUKU VIBURNUM VIBURNUM COCARITISSIMUM 'AWABUKU'	36"	30"	FULL TO BASE, 3 GALLON, 36" O.C.
PHI	18		PHILODENDRON PHILODENDRON SELLOUM	42"	36"	FULL TO BASE, MIN. 7 GALLON, 48" O.C.
IXO	120		IXORA IXORA COCCINEA 'JUNGLE FLAME'	24"	24"	FULL TO BASE, 3 GALLON, 24" O.C.
VIB	148		SANDANKWA VIBURNUM VIBURNUM SUSPENSUM	24"	24"	FULL TO BASE, 3 GALLON, 24" O.C.
FAK	32		FAKAHATCHEE GRASS TRIPLODIUM DACTYLOIDES	24"	24"	FULL TO BASE, MATCHED 3 GALLON, 36" O.C.
CHR	148		COCOPLUM CHRYSOBALANUS ICADO	24"	24"	FULL TO BASE, 3 GALLON, 24" O.C.

Sym	Key	Qty.	Scientific/Common Name	Ht.	Spr.	Remarks
PLU	120		PLUMBAGO PLUMBAGO AURICULATA 'IMPERIAL BLUE'	18"	18"	FULL TO BASE, 3 GALLON, 24" O.C.
JAS	125		WAX JASMINE JASMINUM VOLUBILE	18"	18"	FULL 1 GALLON, 18" O.C.
NEP	130		FISHTAIL FERN NEPHROLEPIS FALCATA 'FURCANS'	12"	12"	FULL 1 GALLON, 18" O.C.
SCH	24		VAREGATED SCHEFFLERA SCHEFFLERA ARBORESCENS 'VAREGATA'	24"	18"	FULL TO BASE, MIN. 3 GALLON, 24" O.C.
PIT	66		VAREGATED 'OSBA' PITTOSPORUM PITISPORUM TOBIRA 'VAREGATA'	8"	8"	FULL TO BASE, 1 GALLON, 18" O.C.
RHI	120		INDIAN HAWTHORN 'WHITE' RHAPHIOLEPIS INDICA 'ALBA'	18"	18"	FULL TO BASE, 3 GALLON, 24" O.C.
JUN	125		BLUE RUG JUNPER JUNIPERUS HORIZONTALIS 'WILTONI'	12"	18"	FULL TO BASE, 3 GALLON, 24" O.C.
TRA	6		CONFEDERATE JASMINE TRACHELOSPERMUM JASMINOIDES			3 GALLON, FULL, MIN. 2 BRANCHES, MIN. 30" LONG, ATTACH TO FENCE/TRELLIS
SOD	SOD	XXXXXX S.T.	ST. AUGUSTINE FLORATUM STENOCHLOA SECURIDATUM			SOLID SOID, STAGGER SEAMS, FIELD VERIFY SOID AREAS



J:\38890\5.9 Drawings\591sc\Layouts\38890-LandscapePlan_ALT.dwg Modified: 3/16/2016 By: becky.williams Plotted By: becky.williams

IBI GROUP (FLORIDA) INC. ENGINEERS SURVEYORS PLANNERS LANDSCAPE ARCHITECTS ENVIRONMENTAL CONSULTANTS 2200 PARK CENTRAL BLVD. N. SUITE 101 POMPANO BEACH, FLORIDA 33064 (954) 974-2200 ORLANDO POMPANO BEACH	
MAYFAIR FORT PIERCE, FLORIDA LANDSCAPE TYPICALS	
SCALE: 1" = 10' PROJECT: 38890 SHEET: LA-2.2	DRAWN: BW DESIGNED: CHECKED: RW DATE: 3/16/2016
IBI GROUP FLORIDA ENGINEERING BUSINESS NO. 2966	
NOT FOR CONSTRUCTION 3/16/16	