

PLANT OPERATIONS PLAN
FOR REFERENCE ONLY SCALE: 1"=100'-0"

ENGR.	DATE	
CHECKED	DATE	
DRAWN	DATE	
M.R.	09/27/16	
DATE	DESCRIPTION	BY
REVISIONS		



PROJECT: **NEW PRECAST PLANT**
SECTION 32, TOWNSHIP 35 SOUTH, RANGE 40 EAST
CITY OF FORT PIERCE
ST. LUCIE COUNTY, FLORIDA

CONTR.:
TEL.:

APPROVED DATE	SHEET NO.	WO#:
-	1.0	P-16-

PRECAST SPECIALTIES
Pre-Cast Specialties, LLC.
1380 N.E. 48th. St. Pompano Beach, FL 33064
PHONE: 954-781-4040 FAX: 954-781-1194

**NEW PRECAST MANUFACTURING &
 ADMINISTRATION FACILITY**

CITY OF FORT PIERCE
 ST. LUCIE COUNTY, FLORIDA

APPROVED BY:

T. Jeff Trompeter, P.E.
 Florida License No. 51045

CDI PROJECT NO.
 16488-01

DATE: 8/30/16

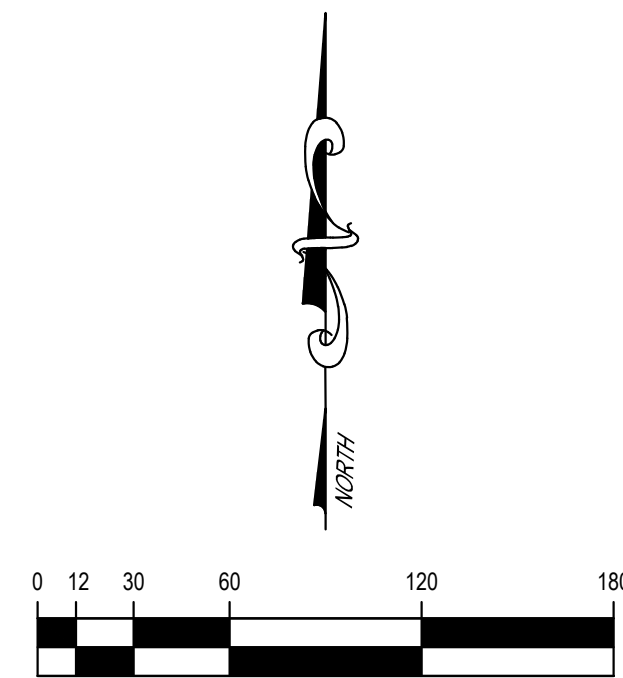
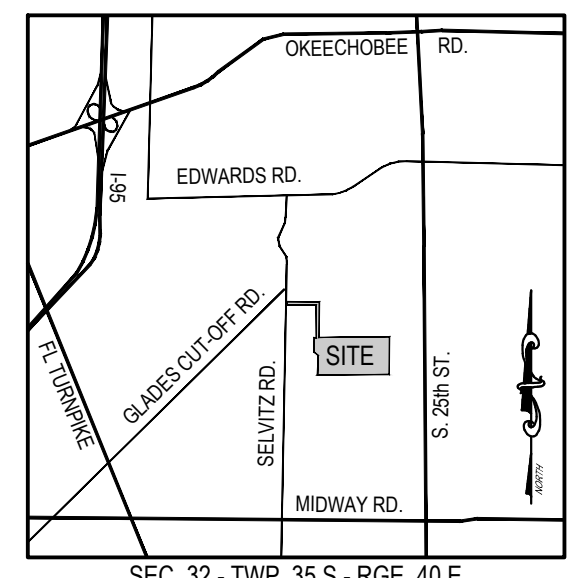
DESIGNED: JT

DRAWN: CJ

NO.	DATE	REVISION DESCRIPTION
1	9/16/16	TRC REVIEW COMMENTS

**PRELIMINARY
 ENGINEERING PLAN**

PE1.1



SCALE: 1" = 60'

LEGEND

EXISTING WATERMAIN — EXWM — EXWM — EXWM —
 EXISTING FORCEMAIN — EXFM — EXFM — EXFM —
 EXISTING STORM DRAINAGE — EXSTM — EXSTM — EXSTM —
 STRUCTURE NUMBER — S-000
 RIM ELEVATION — 0.00 RIM
 INVERT — 0.00
 STRUCTURE BOTTOM — 0.00 BOT

PROPOSED STORM DRAINAGE LINE W/ STORM STRUCTURE — [Symbol]
 STRUCTURE NUMBER — MH-0
 RIM ELEVATION — 0.00 RIM
 INVERT — 0.00

PROPOSED SANITARY SEWER — S — S — S — S —
 FIRE HYDRANT ASSEMBLY — [Symbol]
 PROPOSED FIRE MAIN — FIRE — FIRE — FIRE —
 PROPOSED WATER SERVICE LINE — V — V — V — V —
 PROPOSED SANITARY SERVICE LINE — S — S — S — S —
 PROPOSED FORCEMAIN — FM — FM — FM —
 PROPOSED SILT FENCE — [Symbol]

PROPOSED PAVEMENT — [Symbol]
 PROPOSED SHELLROCK — [Symbol]
 PROPOSED CONCRETE — [Symbol]

UTILITY EASEMENT — U.E.
 BUFFER EASEMENT — B.E.
 STOP SIGN & 2' STOP BAR (THERMO.) — [Symbol]

- NOTES:**
- ALL STORM DRAINAGE FACILITIES SHALL CONFORM TO CHAPTERS 17 AND 18 OF THE FORT PIERCE CODE OF ORDINANCES AND THE "STANDARD SPECIFICATIONS" ADOPTED BY THE CITY COMMISSION ON FEBRUARY 13, 1973.
 - PRELIMINARY DESIGN CALCULATION ELEVATIONS ARE AS FOLLOWS:
 2.1. 10Y-1D STAGE (6" RAINFALL) = 9.49 (MINIMUM ROAD CROWN)
 2.2. 25Y-3D STAGE (9.5" RAINFALL) = 10.49 (MINIMUM PERIMETER)
 2.3. 100Y-3D STAGE (12.23" RAINFALL) = 11.05 (MINIMUM FFE)
 - PROTECT EXISTING AND PROPOSED INLETS DURING CONSTRUCTION.
 - SWEEP ROADS AND CONSTRUCTION SITE PERIODICALLY TO REMOVE CONSTRUCTION DEBRIS AND SEDIMENT.
 - STORM DRAINAGE TO BE SEDIMENT AND SILT FREE DURING CONSTRUCTION AND AT FINAL SITE WALK THROUGH.
 - FIELD VERIFY LOCATION OF EXISTING UTILITIES PRIOR TO SERVICE CONNECTION. IT SHALL BE THE CONTRACTOR'S RESPONSIBILITY TO DETERMINE THE LOCATION, DEPTH AND CONDITION OF ALL EXISTING UNDERGROUND UTILITIES PRIOR TO CONSTRUCTION.
 - IT SHALL ALSO BE THE CONTRACTOR'S RESPONSIBILITY TO PROTECT AND SUPPORT THESE EXISTING UTILITIES AND MAINTAIN CONTINUOUS SERVICE OF ALL UTILITIES PARTICULARLY WATER AND SEWER DURING THE ENTIRE COURSE OF CONSTRUCTION.



**NEW PRECAST MANUFACTURING &
 ADMINISTRATION FACILITY**
 CITY OF FORT PIERCE
 ST. LUCIE COUNTY, FLORIDA

APPROVED BY:

T. Jeff Trompeter, P.E.
 Florida License No. 51045

CDI PROJECT NO.
 16488-01

DATE: 8/30/16

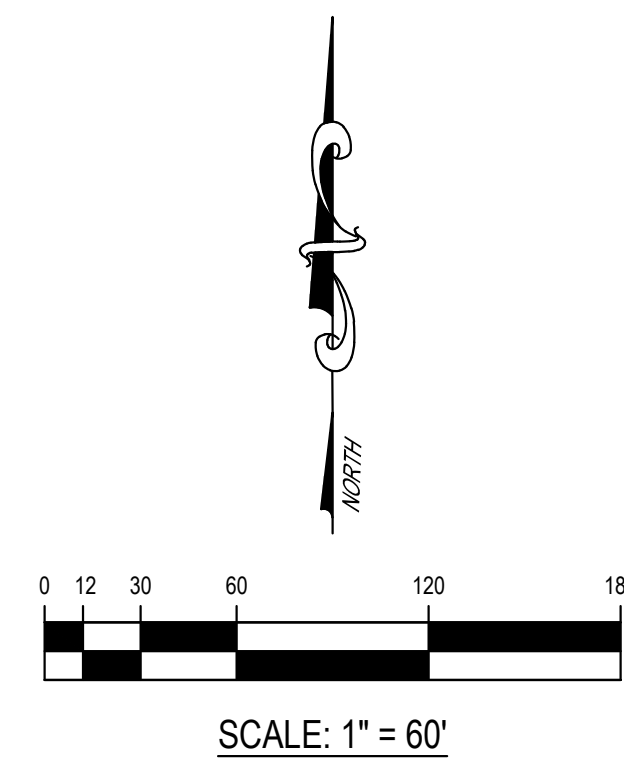
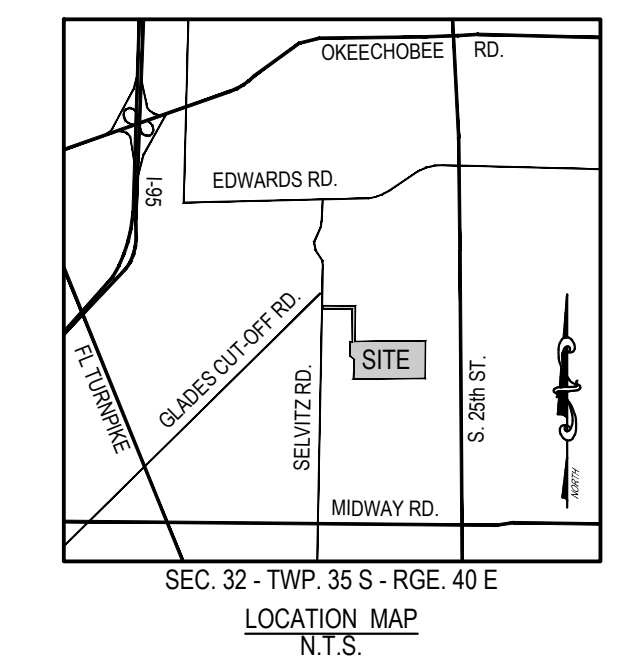
DESIGNED: JT

DRAWN: CJ

NO.	DATE	REVISION DESCRIPTION
1	9/16/16	TRC REVIEW COMMENTS

**PRELIMINARY
 ENGINEERING PLAN**

PE1.2



LEGEND

EXISTING WATERMAIN: EXWM — EXWM — EXWM —

EXISTING FORCEMAIN: EXFM — EXFM — EXFM —

EXISTING STORM DRAINAGE: EXSTM — EXSTM — EXSTM —

STRUCTURE NUMBER: S-000
 RIM ELEVATION: 0.00 RIM
 INVERT: 0.00
 STRUCTURE BOTTOM: 0.00 BOT

PROPOSED STORM DRAINAGE LINE W/ STORM STRUCTURE: ————

STRUCTURE NUMBER: MH-0
 RIM ELEVATION: 0.00 RIM
 INVERT: 0.00

PROPOSED SANITARY SEWER: — S — S — S — S — S —

FIRE HYDRANT ASSEMBLY: — FH — FH — FH —

PROPOSED FIRE MAIN: — FIRE — FIRE — FIRE —

PROPOSED WATER SERVICE LINE: — V — V — V — V — V —

PROPOSED SANITARY SERVICE LINE: — S — S — S — S — S —

PROPOSED FORCEMAIN: — FM — FM — FM —

PROPOSED SILT FENCE: ————

PROPOSED PAVEMENT: [Pattern]

PROPOSED SHELLROCK: [Pattern]

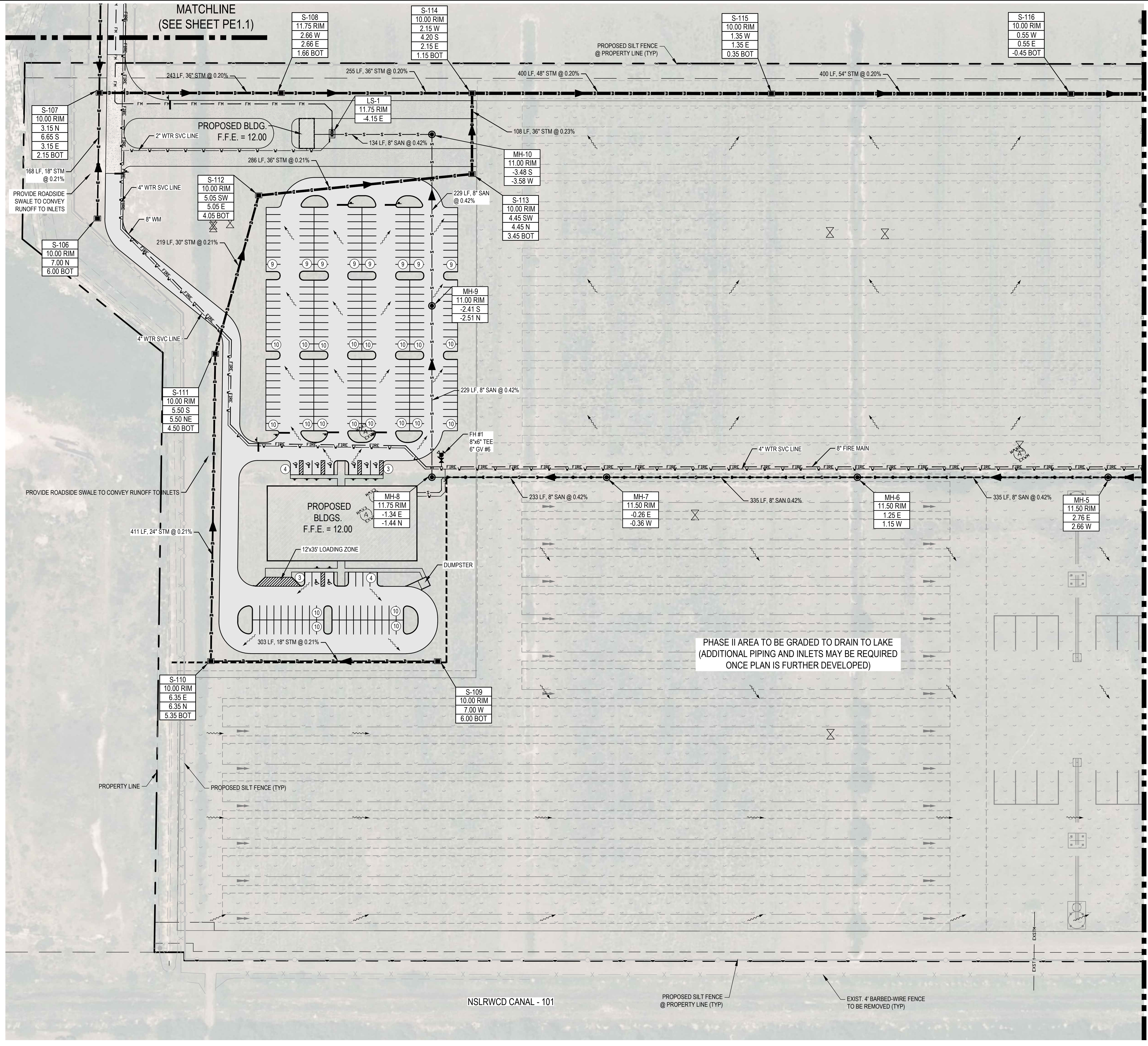
PROPOSED CONCRETE: [Pattern]

UTILITY EASEMENT: U.E.

BUFFER EASEMENT: B.E.

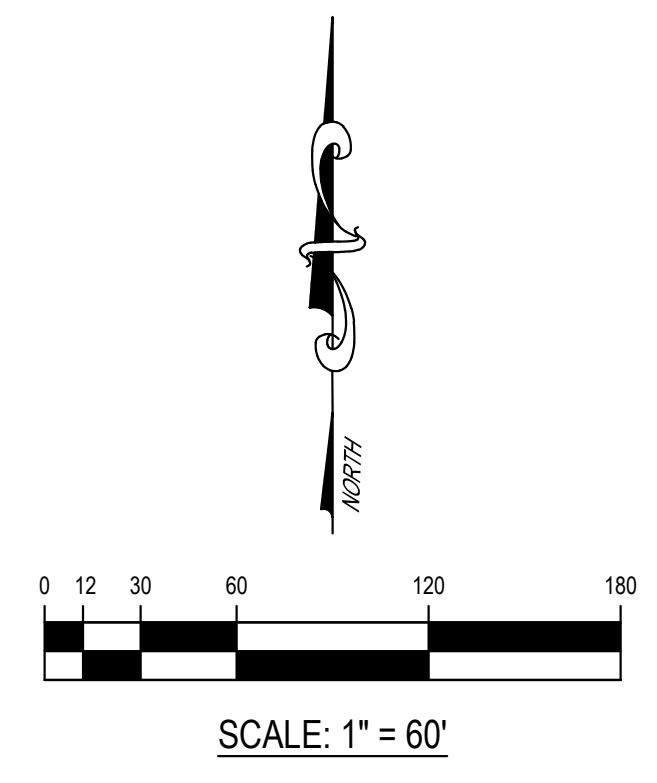
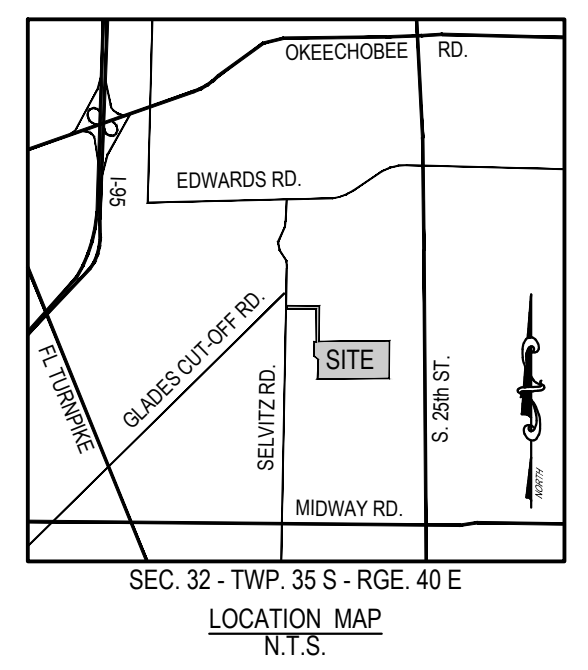
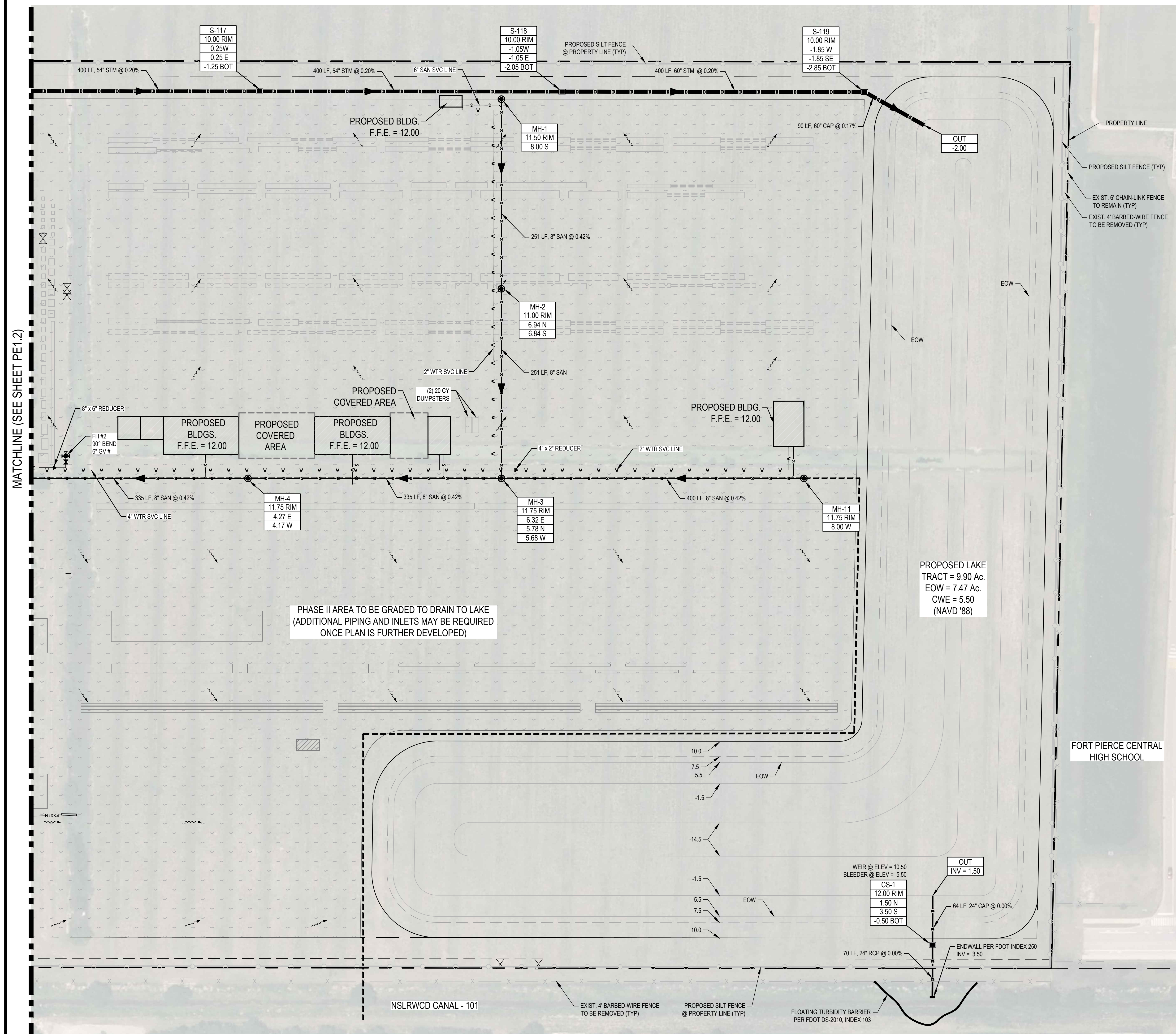
STOP SIGN & 2' STOP BAR (THERMO.): [Symbol]

- NOTES:**
- ALL STORM DRAINAGE FACILITIES SHALL CONFORM TO CHAPTERS 17 AND 18 OF THE FORT PIERCE CODE OF ORDINANCES AND THE "STANDARD SPECIFICATIONS" ADOPTED BY THE CITY COMMISSION ON FEBRUARY 13, 1973.
 - PRELIMINARY DESIGN CALCULATION ELEVATIONS ARE AS FOLLOWS:
 - 10'-1D STAGE (6" RAINFALL) = 9.49 (MINIMUM ROAD CROWN)
 - 25'-3D STAGE (9.5" RAINFALL) = 10.49 (MINIMUM PERIMETER)
 - 100'-3D STAGE (12.23" RAINFALL) = 11.05 (MINIMUM FFE)
 - PROTECT EXISTING AND PROPOSED INLETS DURING CONSTRUCTION.
 - SWEEP ROADS AND CONSTRUCTION SITE PERIODICALLY TO REMOVE CONSTRUCTION DEBRIS AND SEDIMENT.
 - STORM DRAINAGE TO BE SEDIMENT AND SILT FREE DURING CONSTRUCTION AND AT FINAL SITE WALK THROUGH.
 - FIELD VERIFY LOCATION OF EXISTING UTILITIES PRIOR TO SERVICE CONNECTION. IT SHALL BE THE CONTRACTOR'S RESPONSIBILITY TO DETERMINE THE LOCATION, DEPTH AND CONDITION OF ALL EXISTING UNDERGROUND UTILITIES PRIOR TO CONSTRUCTION.
 - IT SHALL ALSO BE THE CONTRACTOR'S RESPONSIBILITY TO PROTECT AND SUPPORT THESE EXISTING UTILITIES AND MAINTAIN CONTINUOUS SERVICE OF ALL UTILITIES PARTICULARLY WATER AND SEWER DURING THE ENTIRE COURSE OF CONSTRUCTION.



MATCHLINE (SEE SHEET PE1.3)

MATCHLINE (SEE SHEET PE1.1)



LEGEND

EXISTING WATERMAIN	— EXWM — EXWM — EXWM —
EXISTING FORCEMAIN	— EXFM — EXFM — EXFM —
EXISTING STORM DRAINAGE	— EXSTM — EXSTM — EXSTM —
STRUCTURE NUMBER	— S-000
RIM ELEVATION	0.00 RIM
INVERT	0.00
STRUCTURE BOTTOM	0.00 BOT
PROPOSED STORM DRAINAGE LINE W/ STORM STRUCTURE	— S — S — S — S — S —
STRUCTURE NUMBER	— MH-0
RIM ELEVATION	0.00 RIM
INVERT	0.00
PROPOSED SANITARY SEWER	— S — S — S — S — S —
FIRE HYDRANT ASSEMBLY	— F — F — F — F — F —
PROPOSED FIRE MAIN	— FIRE — FIRE — FIRE —
PROPOSED WATER SERVICE LINE	— W — W — W — W — W —
PROPOSED SANITARY SERVICE LINE	— SS — SS — SS — SS — SS —
PROPOSED FORCEMAIN	— FM — FM — FM —
PROPOSED SILT FENCE	— S — S — S — S — S —
PROPOSED PAVEMENT	[Pattern]
PROPOSED SHELLROCK	[Pattern]
PROPOSED CONCRETE	[Pattern]
UTILITY EASEMENT	U.E.
BUFFER EASEMENT	B.E.
STOP SIGN & 2' STOP BAR (THERMO.)	[Symbol]

- NOTES:**
- ALL STORM DRAINAGE FACILITIES SHALL CONFORM TO CHAPTERS 17 AND 18 OF THE FORT PIERCE CODE OF ORDINANCES AND THE "STANDARD SPECIFICATIONS" ADOPTED BY THE CITY COMMISSION ON FEBRUARY 13, 1973.
 - PRELIMINARY DESIGN CALCULATION ELEVATIONS ARE AS FOLLOWS:
 - 10Y-1D STAGE (6" RAINFALL) = 9.49 (MINIMUM ROAD CROWN)
 - 25Y-3D STAGE (9.5" RAINFALL) = 10.49 (MINIMUM PERIMETER)
 - 100Y-3D STAGE (12.23" RAINFALL) = 11.05 (MINIMUM FFE)
 - PROTECT EXISTING AND PROPOSED INLETS DURING CONSTRUCTION.
 - SWEEP ROADS AND CONSTRUCTION SITE PERIODICALLY TO REMOVE CONSTRUCTION DEBRIS AND SEDIMENT.
 - STORM DRAINAGE TO BE SEDIMENT AND SILT FREE DURING CONSTRUCTION AND AT FINAL SITE WALK THROUGH.
 - FIELD VERIFY LOCATION OF EXISTING UTILITIES PRIOR TO SERVICE CONNECTION. IT SHALL BE THE CONTRACTOR'S RESPONSIBILITY TO DETERMINE THE LOCATION, DEPTH AND CONDITION OF ALL EXISTING UNDERGROUND UTILITIES PRIOR TO CONSTRUCTION.
 - IT SHALL ALSO BE THE CONTRACTOR'S RESPONSIBILITY TO PROTECT AND SUPPORT THESE EXISTING UTILITIES AND MAINTAIN CONTINUOUS SERVICE OF ALL UTILITIES PARTICULARLY WATER AND SEWER DURING THE ENTIRE COURSE OF CONSTRUCTION.

CDI CIVIL DESIGN, INC.
 Service Driven Design - Engineered Results
 1400 Centrepark Blvd, Suite 905
 West Palm Beach, FL 33401
 T: 561.659.5760 F: 561.659.5772
 www.civil-design.com
 CA No. 9664

NEW PRECAST MANUFACTURING & ADMINISTRATION FACILITY

CITY OF FORT PIERCE
 ST. LUCIE COUNTY, FLORIDA

APPROVED BY:

T. Jeff Trompeter, P.E.
 Florida License No. 51045

CDI PROJECT NO.
 16488-01

DATE: 8/30/16
 DESIGNED: JT
 DRAWN: CJ

NO.	DATE	REVISION DESCRIPTION

PRELIMINARY ENGINEERING PLAN

PE1.3