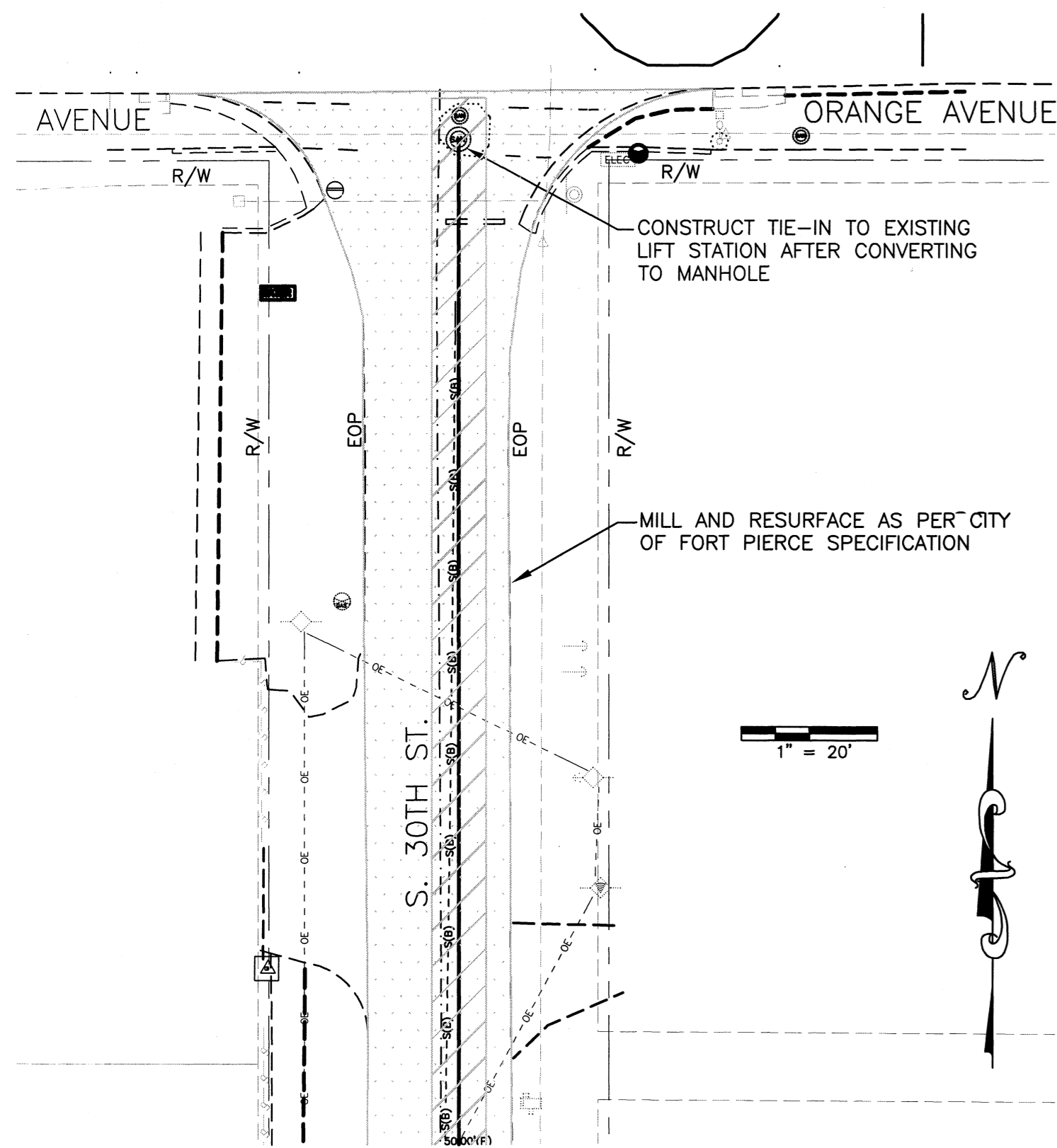
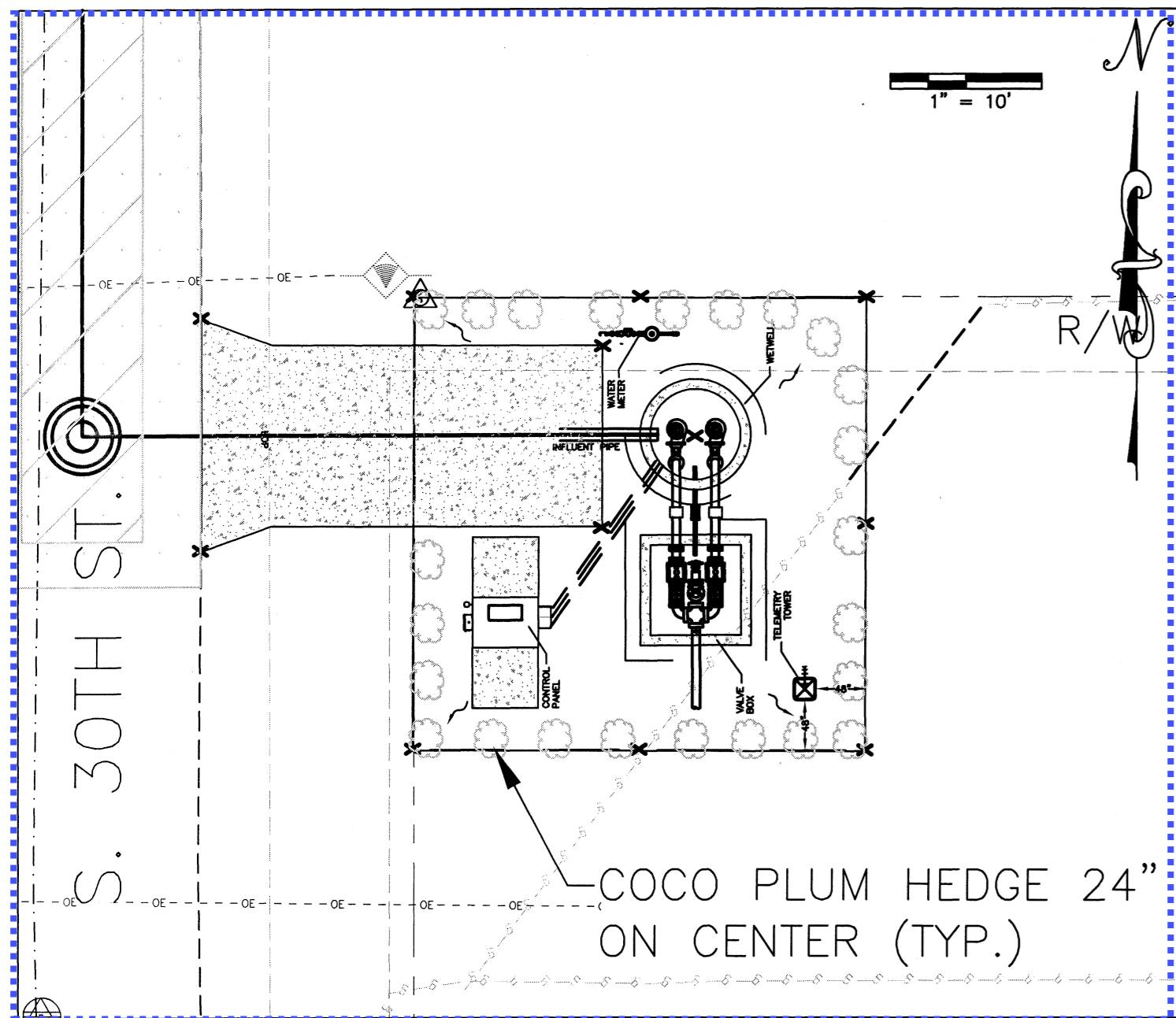
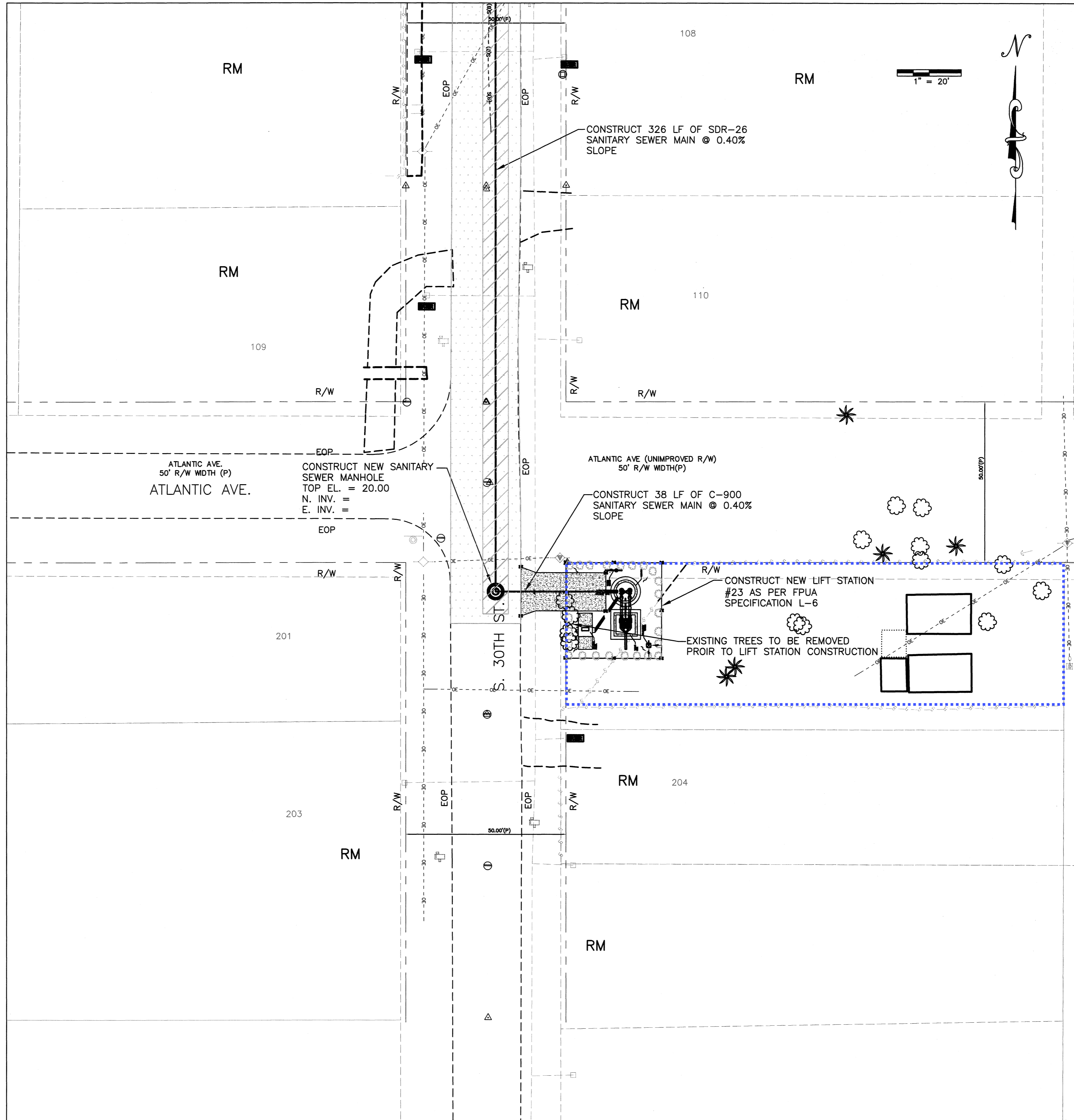


TYPICAL LIFT STATION EASEMENT LAYOUT  
N.T.S

- NOTES:
- 1) ONLY TO BE USED FOR GENERAL SITE LAYOUT. REFER TO FPUA'S LIFT STATIONS, PUMPS, AND CONTROL DESIGN AND CONSTRUCTION STANDARDS 02735 FOR SPECIFIC CONSTRUCTION REQUIREMENTS.
  - 2) LANDSCAPE AROUND LIFT STATION PER LOCAL ORDINANCE. (COCO PLUM)
  - 3) AREA TO BE LAID WITH SOD.
  - 4) BOLD "X" REPRESENTS ELEVATIONS NECESSARY TO CONFIRM DRAINAGE AND INSTALLATION REQUIREMENTS.
  - 5) LIFT STATION EASEMENT SHALL MEASURE 30' x 30' (MINIMUM)



MATCHLINE

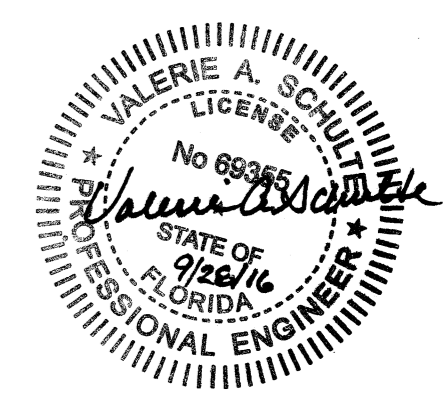


SITE PLAN

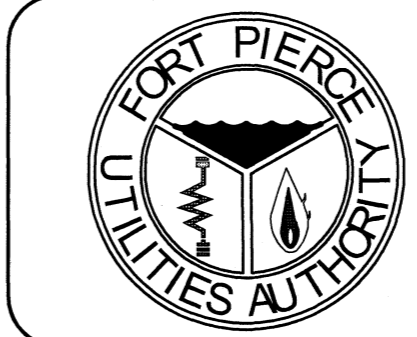
EXISTING PROPERTY AREAS :  
ACREAGE = 0.17 AC.  
TOTAL AREA = 7405 SQ. FT.  
IMPERVIOUS AREA = 562 SQ. FT.  
PERVIOUS AREA = 6843 SQ. FT.

LIFT STATION EASEMENT :  
ACREAGE = 0.02 AC.  
TOTAL AREA = 900 SQ. FT.  
IMPERVIOUS AREA = 245 SQ. FT.  
PERVIOUS AREA = 655 SQ. FT.

POST CONSTRUCTION PROPERTY AREAS :  
ACREAGE = 0.17 AC.  
TOTAL AREA = 7405 SQ. FT.  
IMPERVIOUS AREA = 807 SQ. FT.  
PERVIOUS AREA = 6598 SQ. FT.



Valerie A. Schulte, P.E. PE# 69355  
1701 S. 37th Street  
Fort Pierce, FL 34947



VERIFY SCALE  
BAR IS EQUAL TO ONE  
INCH ON ORIGINAL DRAWING

0 1  
ADJUST ALL SCALED  
DIMENSIONS ACCORDINGLY

DATE:	REVISION:	BY:	APPD:
DESIGNED: JLC	DRAWING FILENAME		
DRAWN BY: SLL	SCALE: 1"=20'		
APPROVED: VAS	DATE: 7-19-2016	SHEET TYPE PLAN / PROFILE	

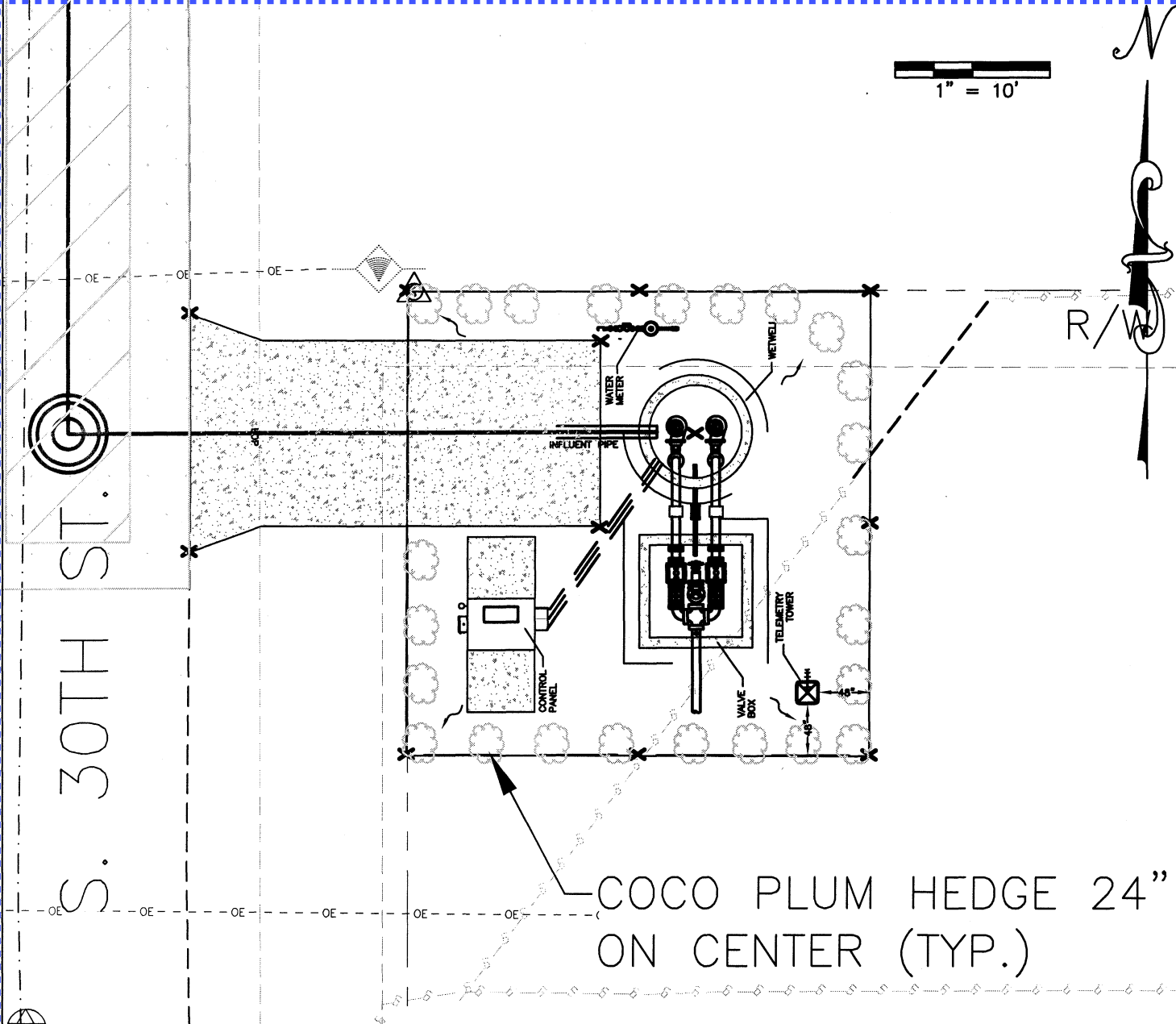
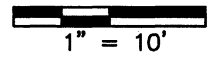
**LIFT STATION #23  
RELOCATION**

WATER/WASTEWATER ENGINEERING

FT. PIERCE UTILITIES AUTHORITY  
1701 SOUTH 37TH STREET  
FT. PIERCE, FLORIDA 34947  
(772) 468-1800 / FAX (772) 468-2414

SHEET # 6 OF 6

MATCHLINE



COCO PLUM HEDGE 24"  
ON CENTER (TYP.)

S. 30TH ST.

R/W

CONTROL  
PANEL

WATER  
METER

INFLUENT  
PIPE

WETWELL

TELEMETRY  
TOWER

VALVE  
BOX