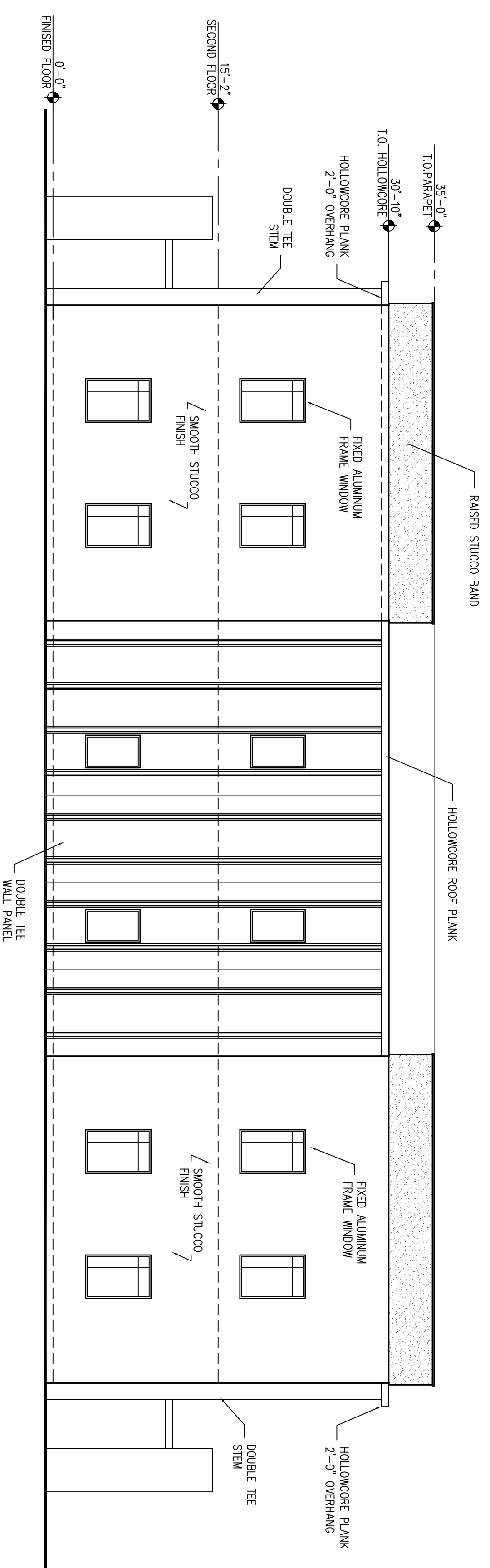


NORTH/SOUTH ELEVATION  
FOR REFERENCE ONLY SCALE: 1/8"=1'-0"



EAST/WEST ELEVATION  
FOR REFERENCE ONLY SCALE: 1/8"=1'-0"

APPROVED DATE		SHEET NO.		WO#:	
-		20		P-16-	
<b>PRECAST SPECIALTIES</b> Pre-Cast Specialties, LLC 1380 N.E. 48th St. Pompano Beach, FL 33064 PHONE: 954-781-4040 FAX: 954-781-1194					
<b>PROJECT:</b> NEW PRECAST PLANT SECTION 32, TOWNSHIP 35 SOUTH, RANGE 40 EAST CITY OF FORT PIERCE ST. LUCIE COUNTY, FLORIDA <b>CONTR.:</b> TEL.:					
		<b>ENGR. DATE</b> CHECKED DATE DRAWN DATE 08/27/16		<b>REVISIONS</b> DESCRIPTION BY	