

DRAFT LETTER OF ENDORSEMENT

To Whom It May Concern:

The City of Fort Pierce would like to express its support of the Steam Locomotive Association #253, Inc. and the 1924 ALCO Steam Locomotive #253 and its museum.

The City is proud to have provided support since 2009 when the locomotive was brought back to her home rails in Fort Pierce. The organization's mission to preserve and restore this valuable historic legacy should emerge as a major tourist attraction and presents the opportunity for a significant impact on the economy of the area.

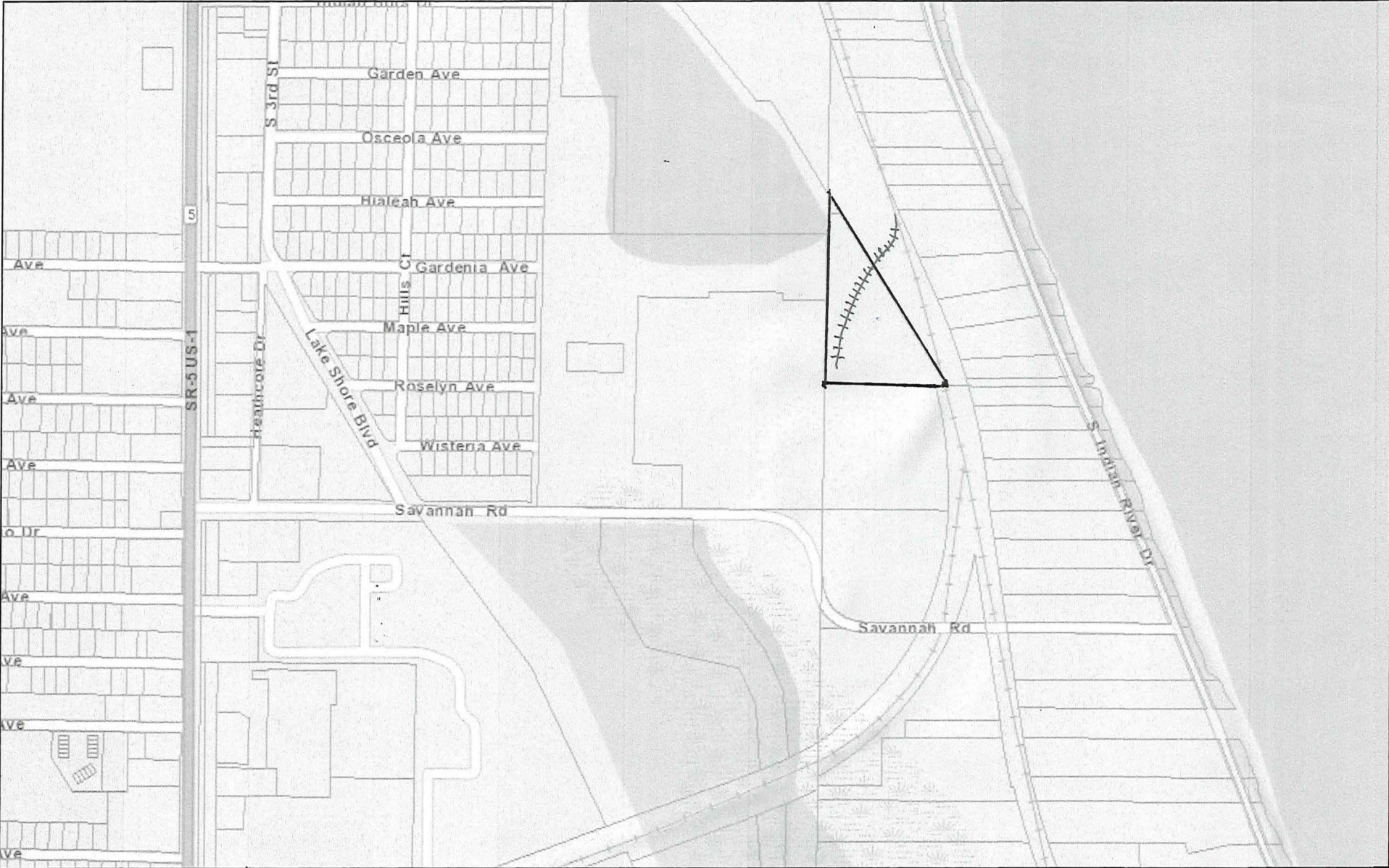
The museum has the ability to create a living history center where our youth are exposed to the nostalgic days of steam transportation where steam railroads played a major role in the early development of Florida's growth and expansion.

I am pleased to state that, in my opinion, Locomotive #253 is a good candidate for restoration to operating condition. The Association and its personnel have developed a sensible restoration plan for Locomotive #253 and bring years of experience and knowledge to this important project.

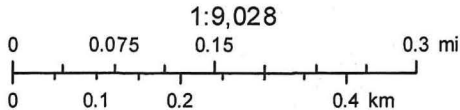
I look forward to our continuing relationship to usher in a new era of steam railroading in Florida for decades to come.

Sincerely,

Ken Pruitt, Saint Lucie County Property Appraiser



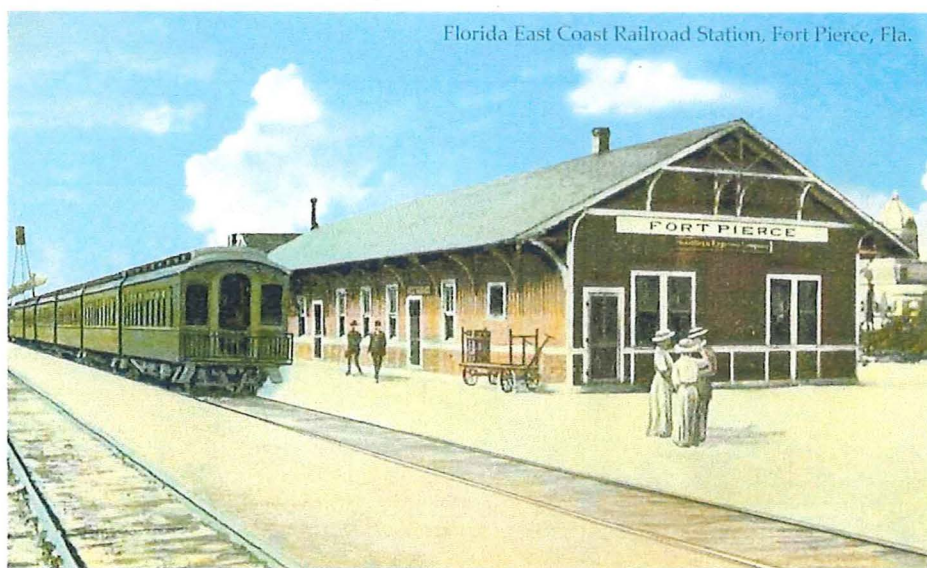
February 16, 2016



Sources: Esri, HERE, DeLorme, USGS, Intermap, increment P Corp., NRCAN, Esri Japan, METI, Esri China (Hong Kong), Esri (Thailand),

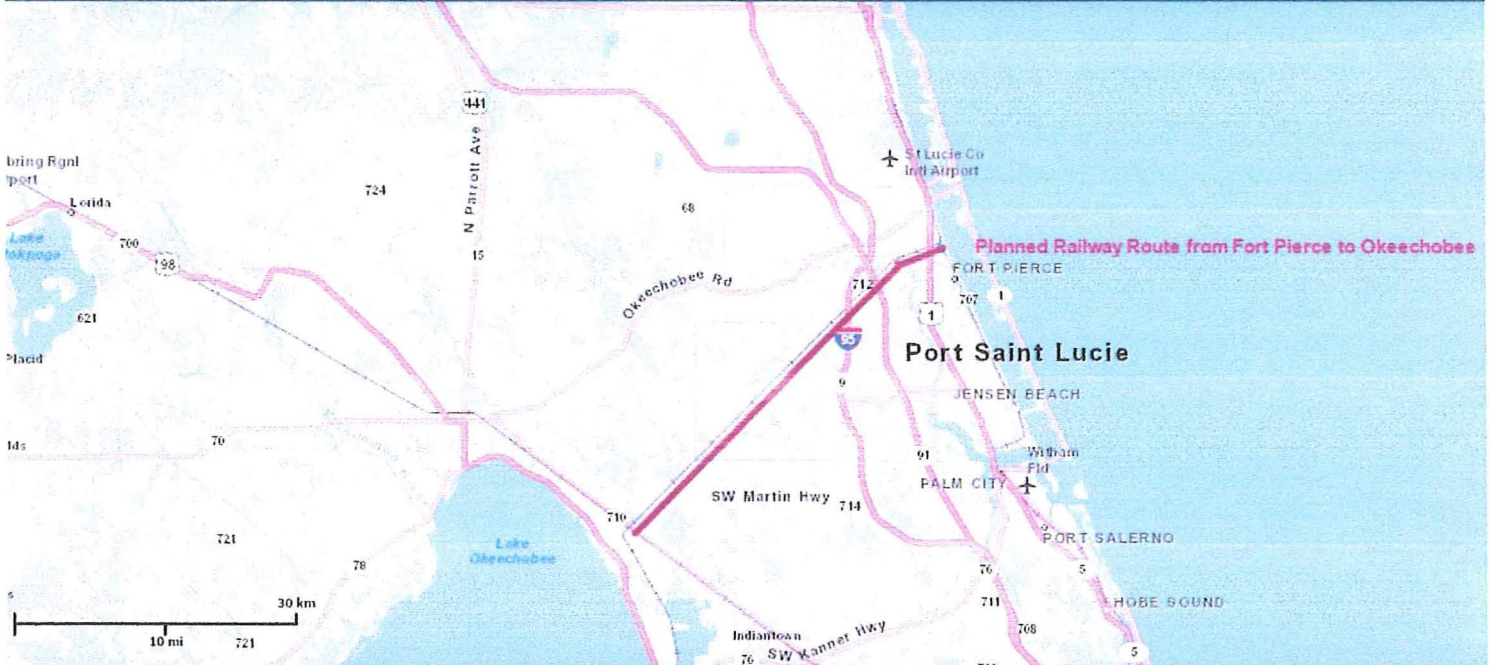
This information is deemed to be correct at this time but it is subject to change and is not warranted. © Copyright 2015 Saint Lucie County Property Appraiser. All rights reserved.

Florida East Coast Railroad Station, Fort Pierce, Fla.



K Line Railway Route

Fort Pierce to Okeechobee



Copyright 2010 Esri. All rights reserved. Sun Jul 4 2010 09:57:28 PM

STEAM LOCOMOTIVE ASSOCIATION #253, INC.

ANNUAL PROGRESS REPORT 2015

Much has been accomplished in 2015. Early this year the brake rigging was installed after a tedious restoration of its 36 parts, some weighing 80 pounds each. The parts restored include the brake beams, brake pull rods, coupler rods, brake head hangers, brake heads, U shackles, and pins. Another five month long project was replacement of the cab woodwork. All of the cab interior woodwork, including the eight windows, two doors, and the cab paneling have been replaced with new wood and painted. During the summer months, the entire locomotive and tender were refinished with a new coat of high temperature paint. The tubes and flues for the boiler have been purchased and are ready for installation. This boiler work is the final remaining step to bring the locomotive to operating condition. All work is supervised by Robert Bates, engineer and chief mechanical officer. Bob is one of just a very few individuals in the U.S. capable of operating and running a steam locomotive.

Since the purchase of Locomotive #253 in 1998 by Robert Bates and Steve Spreckelmeier, more than 35,000 man hours have been contributed by workers and volunteers over 17 years of long, hard labor. Today, with the cost of restoring a steam locomotive approaching \$1.5 million, much has been accomplished in that time. As of 2015 nearly \$1 million has been spent on #253. Nearly all contributions were derived from grants, private donations, in-kind donations of materials and services, institutional donations, volunteer services, and local fundraisers.

Locomotive #253 was moved to Fort Pierce on June 13, 2009, and since that time the following components have been restored or rebuilt: Firebox pan, blowdown valve, steam injectors, brake valves, super heaters, boiler plate replacement, throttle valves, air pressure tanks, injector nozzles, brake rigging, and more.

Other efforts this year include a major remake of our website (www.steamlocomotive253.org) and the filing of several grants which are pending.

As a tourist attraction, the future B&S Fort Pierce and Western Railroad Museum has an astonishing confluence of factors in its favor. First, this 1924 Steam Locomotive, purchased for Henry Flagler's Florida East Coast Railway, has a rich and glorious history by any measure. At 181 tons it is the largest and one of the last of its kind. For many years it traveled the entire east coast bringing settlers to Florida and made journeys to Key West on the famous "Overseas Highway". This important legacy of Florida's past will be showcased for centuries to come and shared, not only with South Florida, but throughout our Nation as well. The age of steam is a vital part of our history and is responsible for forging the industrial revolution and is largely responsible for the early development of our country and its infrastructure. It is important that this history be made available to the public at large.

Another major component is the proposed property location north of Savannah Road just past the City Public Works property. This is a dream location as it is adjacent to the F.E.C. Railway tracks and, in fact, there are older tracks entering the property, perfect for relocation of the locomotive and the five rail cars. This location is a fortuitous aspect of this project as it provides direct access to the F.E.C. "K Line" track which will be used for the planned public excursions on the train to

Okeechobee County. It is also a short distance from the Heathcote Botanical Gardens, another heavily visited attraction in the area.

A third factor is the well preserved 1893 F.E.C. Railway Depot building. This historic structure will hold the museum artifacts and serve as the ticket office. Such a remarkable landmark as this will provide a period atmosphere with educational opportunities for children and adults alike. The museum, at the current location, is open to the general public on Saturdays from 10:00 am to 4:00 pm and over the years has welcomed thousands of visitors and numerous groups including local school classes, community college classes, Boy Scout and Girl Scout Troops, and many other organizations. When the steam locomotive becomes operational, it is expected to draw very sizable state and national patronage and recognition.

Yet another substantial component is the generous offer of Florida East Coast Railway to donate and install up to 300 feet of new track for the museum. This track would be laid on the proposed Savannah property and would be adequate for display of the train and a "Y" turnaround area.

Lastly, the museum has a narrow gauge train operating on the current property. This train could also be relocated to the Savannah property with tracks winding through the property to view the locomotive and tender as well as the five other rail cars. These narrow gauge trains are widely used throughout the country to provide exciting rides to children and adults alike.

The local economic impact of both the museum and the train operation are significant. The attached Economic Impact Report shows a projected annual recurring revenue of \$182,113,441 and revenues of \$28,339,661 contributed in taxes for St. Lucie County. It is estimated that direct employment would add 16 full time jobs and indirect employment would add 210 full time jobs. The operation of Steam Locomotive #253 could indeed be the economic engine for Fort Pierce and St. Lucie County.

It also appears the operation would be self-sustaining. We know from other train excursions in the U.S., that 2% of visitors to the area will ride historical trains. With our County visitor numbers at about 1 million, the ridership number is estimated at 20,000 annually. A single fare of \$75.00 would therefore yield annual income of \$1,500,000. (The Durango & Silverton fares are \$89 for adults and \$55 for children which are in line with other railroad excursions). Because tickets must be purchased months in advance, most visitors are not able to ride the trains; however, they will visit the museum and come to see the train leave the station and experience the sounds and sights of a living steam engine under way. This provides addition income from museum entrance tickets.

We wish to recognize and thank our many sponsors, supporters, and contributors who have helped out so much this year.

We look forward to another exceptional and thriving year ahead.