

HD King Project Summary and Path Forward



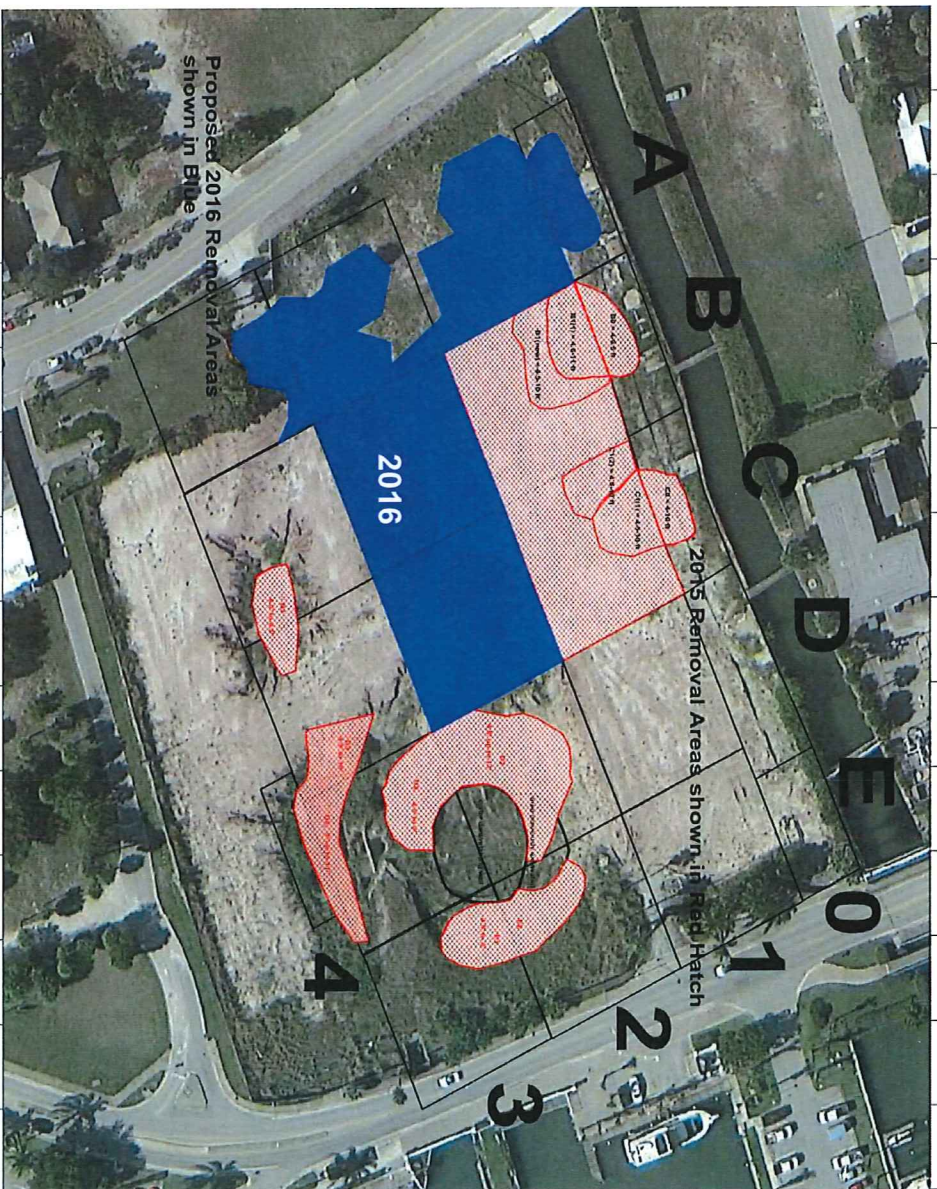
May 2016



HD King Property Project Update – May 2016

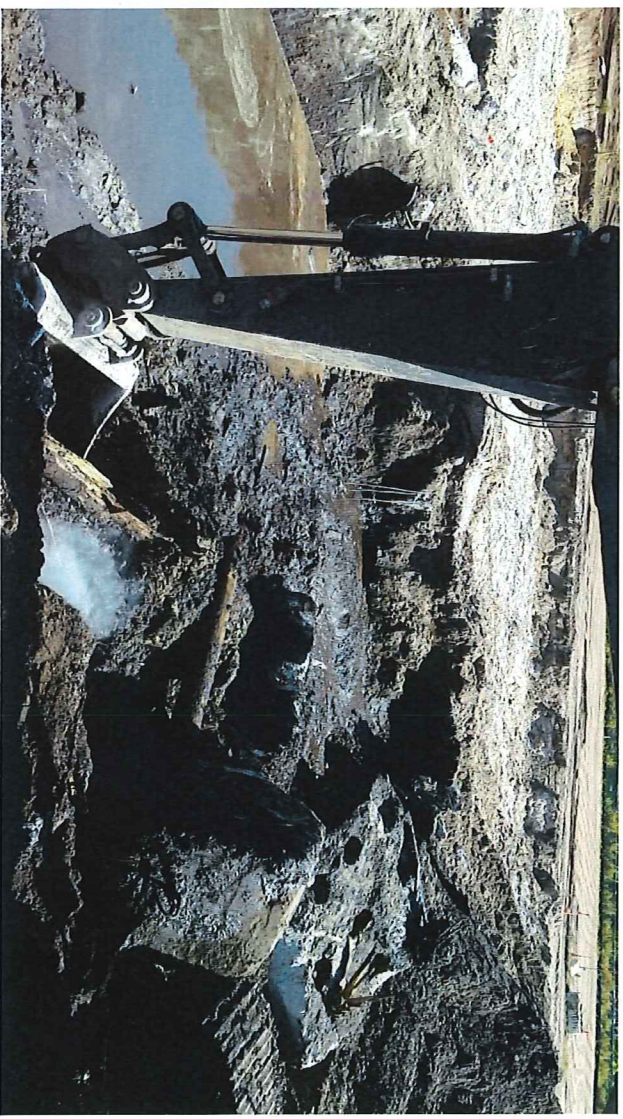
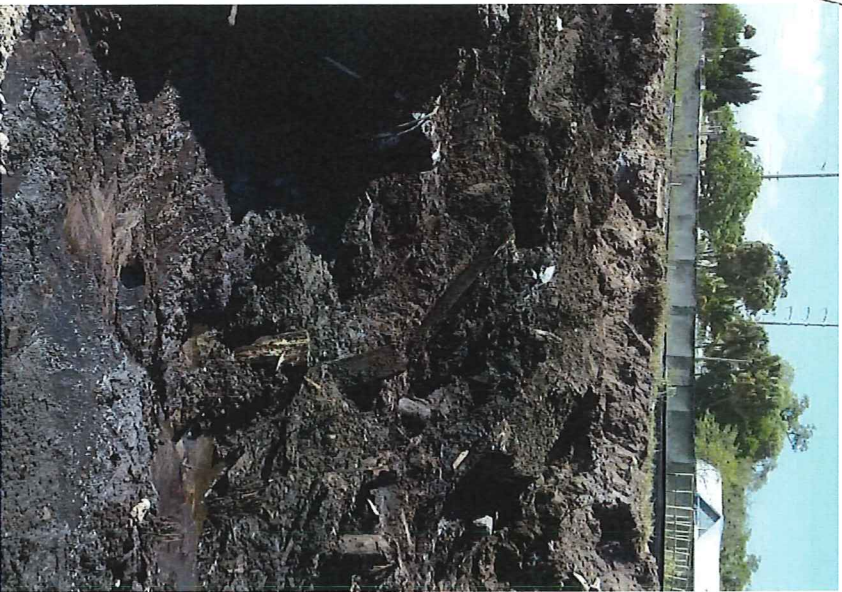
2016 Work

- Approximately 6,000 tons of contaminated soil have been removed and disposed.
- Remaining 4,000 tons to be removed upon closing of RLF loan funds scheduled for May 19, 2016
- Approximately 31,000 cubic yards of clean soil material have been transported from the Indian Hills Recreation Area to complete backfilling of the site.
- Final FDEP reports to be completed by November 2016.



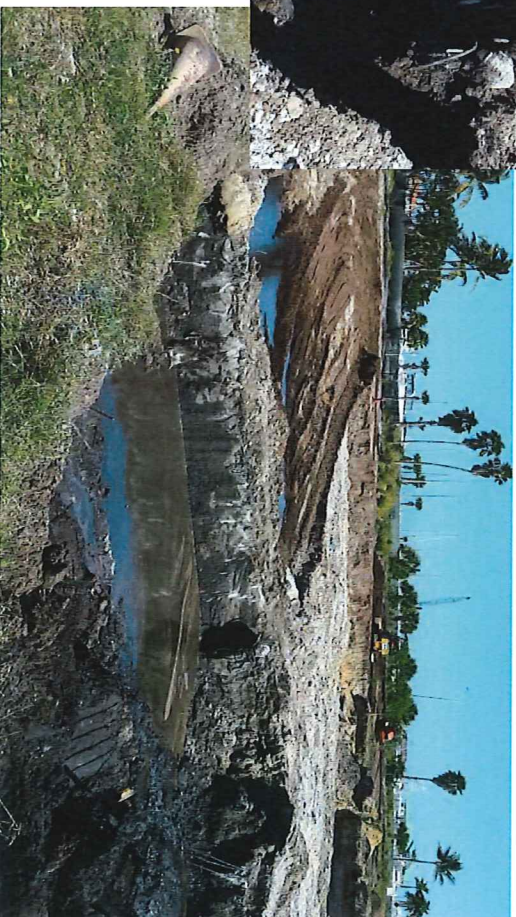
Update on 2016 ISR Activities

- Additional photographs of ISR Activities



Update on 2016 ISR Activities

- Former discharge canal locations surveyed but structures left in place as agreed



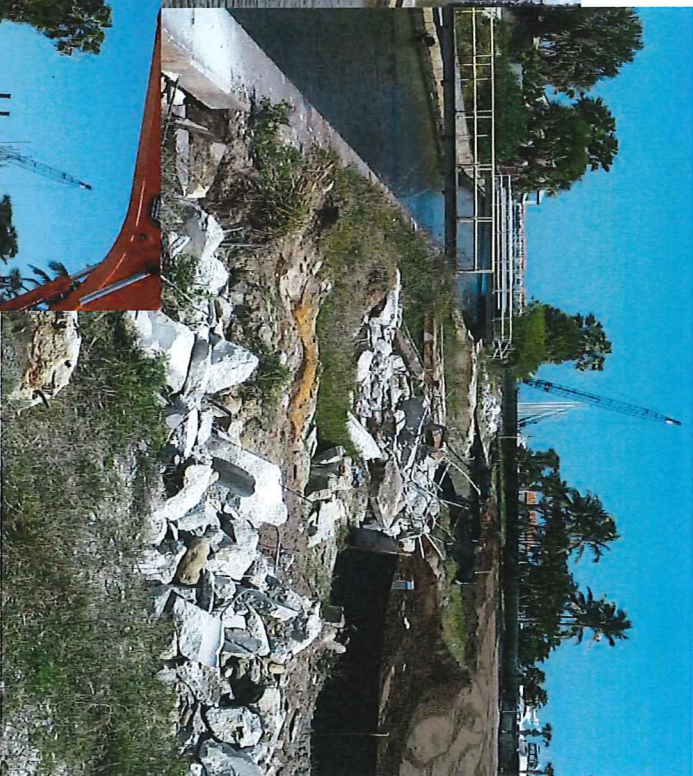
Update on 2016 ISR Activities

Concrete removal:



Update on 2016 ISR Activities

Concrete slab removal along seawall:



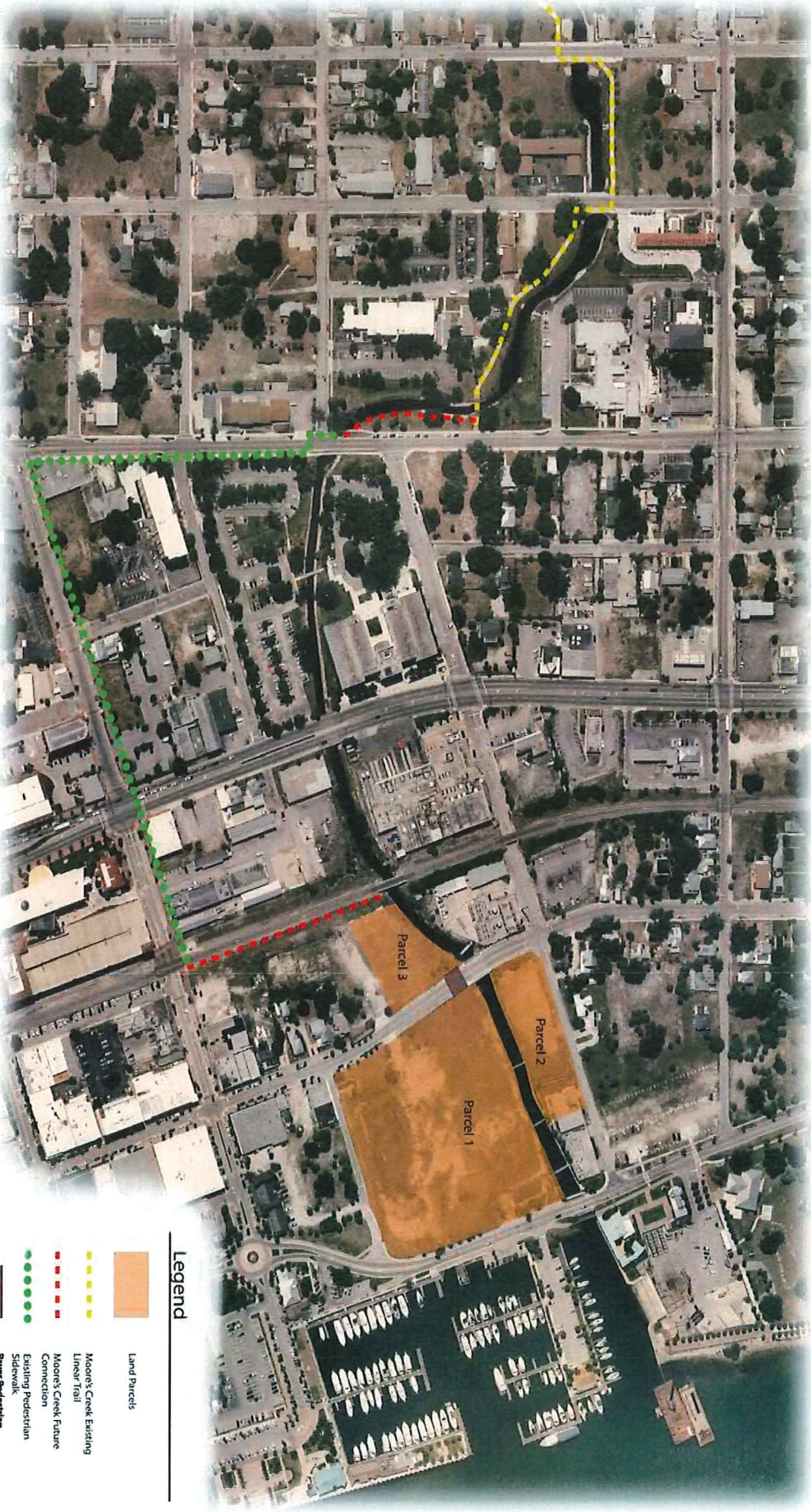
Seawall Design

Design

- 60% Design Plans Completed
 - Permitting underway with FDEP and Army Corp.
 - Contractor preparing not to exceed cost proposal for final design and seawall replacement.
 - Anticipate work completed by November 2016



Moore's Creek Linear Park Extension



- Legend**
- Land Parcels
 - Moore's Creek Existing Linear Trail
 - Moore's Creek Future Connection
 - Existing Pedestrian Sidewalk
 - Power Pedestrian Connection

Moore's Creek Linear Park Extension
Aerial Image



Moore's Creek Linear Park Extension



1 GATEWAY



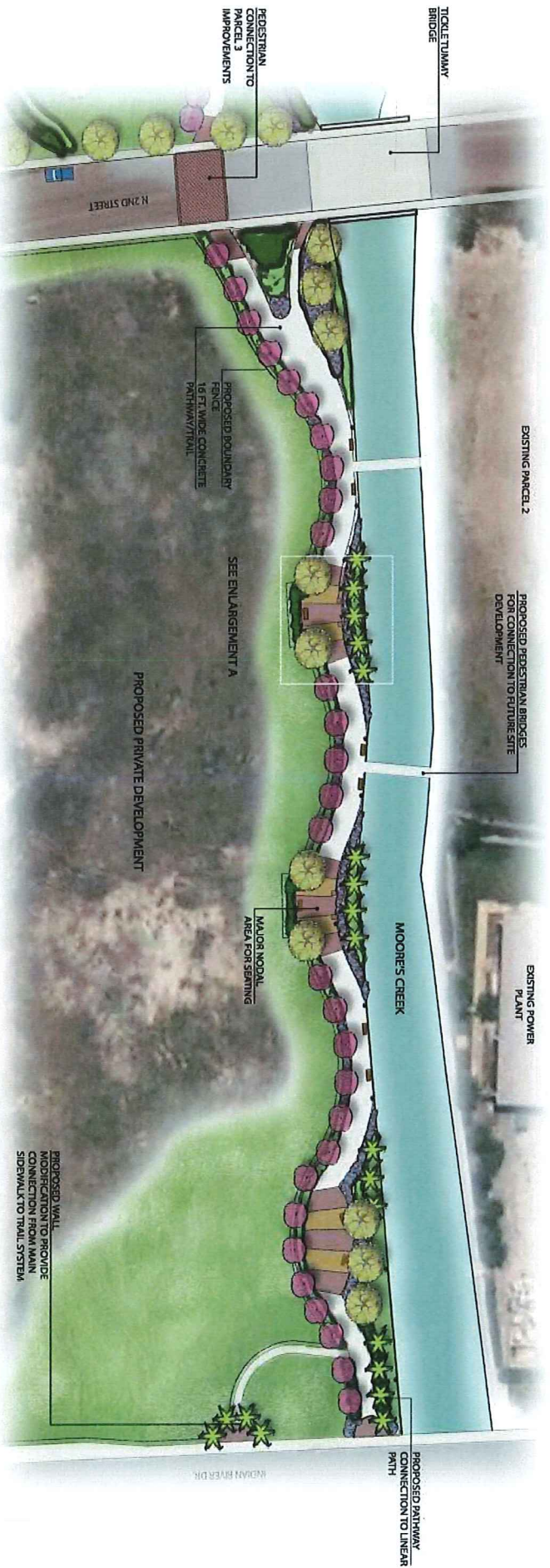
2 FENCING



3 PAVER TREATMENT/NODAL FEATURE



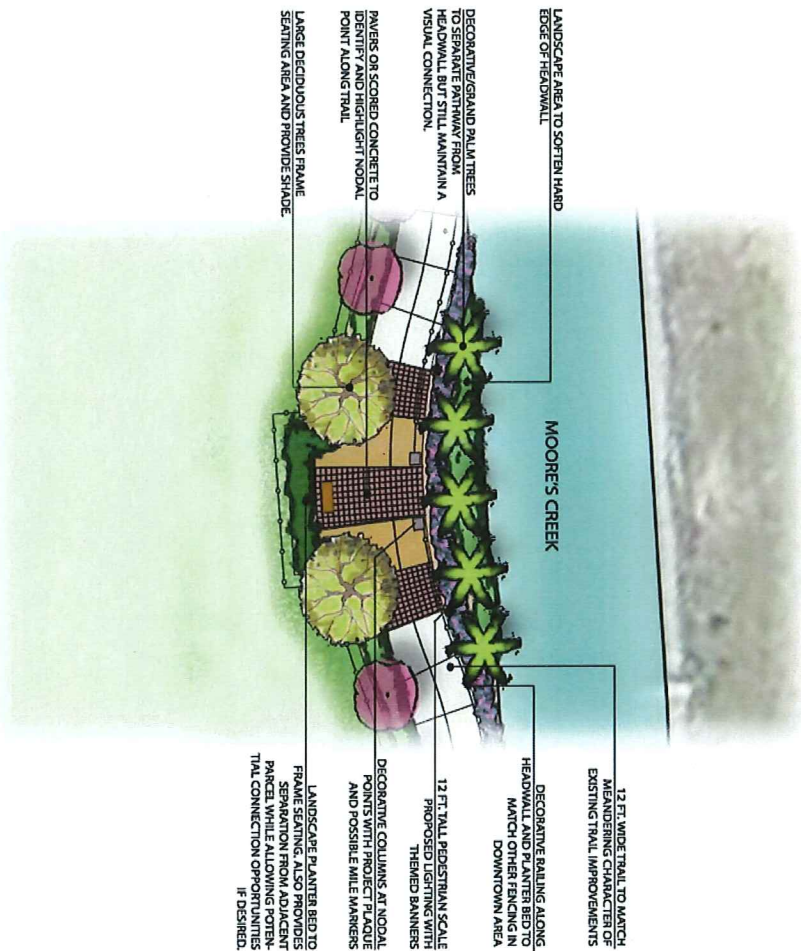
4 LIGHT POLE WITH BANNERS



Moore's Creek Linear Park Extension Parcel 1 - Concept



Moore's Creek Linear Park Extension



A NODAL POINT / SEATING AREA

Moore's Creek Linear Park Extension Parcel 1 - Concept Enlargement



October 15, 2015



Moore's Creek Linear Park Extension



1 MOSAIC BENCH



2 LIGHT POLE



3 FENCING



4 DIFFERENTIATED PAVERS



5 BOLLARDS



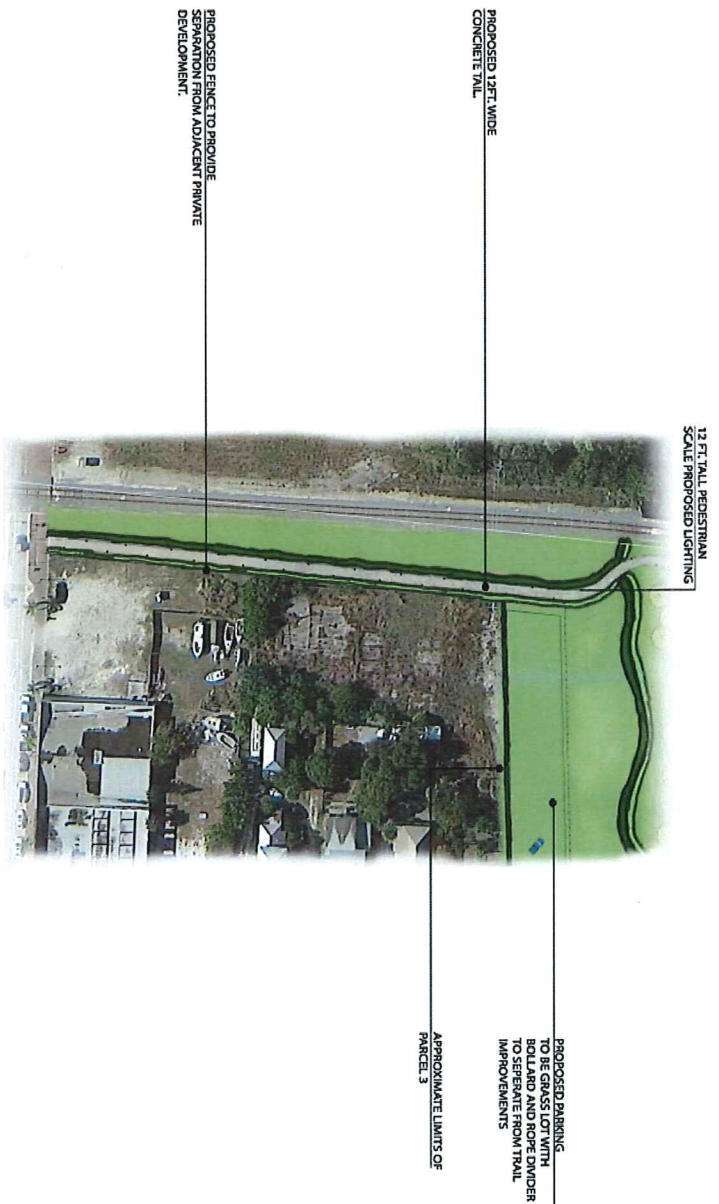
Moore's Creek Linear Park Extension

Parcel 3 - Concept



Moore's Creek Linear Park Extension

- 1 LIGHT POLE
- 2 FENCING
- 3 BOLLARDS



Moore's Creek Linear Park Extension Pedestrian Connector to Ave A - Concept

