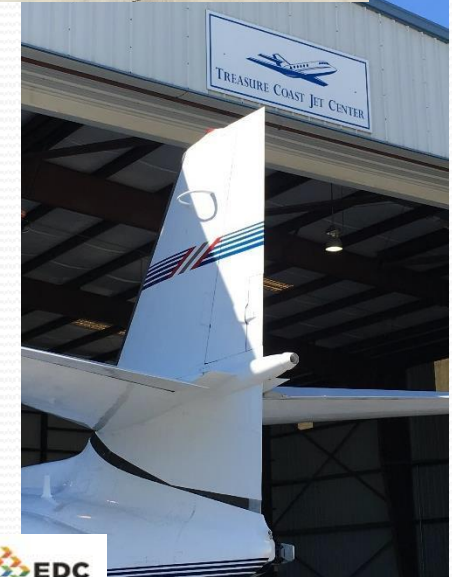




Airport Update

Fort Pierce City Commission

2016 In Review



- Airport Metrics

- Operations: 155,669
- Fuel Flowage: 2015- 1,150,690 Gal
2016- 1,245,201 Gal
- Occupancy: Full



TCIA Community Value

AROUND THE STATE

SOUTHEAST

By Mike Vogel mvogel@floridatrend.com



Treasure Coast International Airport and Business Park has 3,844 acres of largely vacant land.

Flight of Ambition

St. Lucie has big plans for its small airport.

With 3,844 acres, the St. Lucie County-owned airport has more land than the economic domains of Miami International, Fort Lauderdale-Hollywood and Palm Beach International to the south. It has a full-time U.S. Customs facility, sits near I-95 and is home to about 50 mostly small businesses.

What it lacks is recognition, scheduled commercial service and economic engines to take advantage of its largely vacant land. To move toward addressing those needs, the county last year started the process of renaming the airport Treasure Coast International Airport and Business Park. The "international" comes mostly from private and corporate flights to and from the Bahamas, with some flights to Canada and Europe. The airport's 6,492-foot runway can

handle 737s and 757s, including the plane President Obama arrived on in 2015 for a weekend of golf at the ultra-private Floridian National Golf Club and in June.

County leaders want to see Treasure Coast become a regional hub for job-creating aircraft maintenance, repair and overhaul work and air-related businesses. It's too close to the major airports to dream of much more than regional commercial carrier service.

Space at its facility is cheap compared to the larger airports. Of the 50 businesses now there, says Airport manager John Wiatrak, who left Orlando's airport operation three years ago, "their backstory is, 'We used to be in Miami but ...'"

This year the airport is starting construction of a new Customs building and, thanks to

the state, a 30,000-sq.-ft. hangar.

There's precedent for Treasure Coast's hopes. Melbourne International, just 50 miles north, enjoys success with its focus on serving the air industry beyond passenger traffic. It's the centerpiece of a cluster of good-wage aerospace and defense employers, Embraer and lesser known MRO facilities that nevertheless handle 747s and other large aircraft.

"They obviously do a fantastic job," says Treasure Coast's Wiatrak. "When people ask me, 'What do you want to be like?' I say, 'Melbourne.'"

County leaders want the St. Lucie airport to become a regional hub for air-related businesses.



- 1,300 Jobs; \$50M Payroll; 12 MROs on the Field
- \$155M Annual Economic Activity
- \$261M Infrastructure, Buildings and Land Investment
- 3,800 Acres: Larger than MIA, FFL and PBI
- Over 170,000 Operations per Year; 22,000 Clear Customs Annually
- FAA ATCT; ARFF; ILS; US Customs; Part 139
- 100% Leased
- Few Noise Complaints

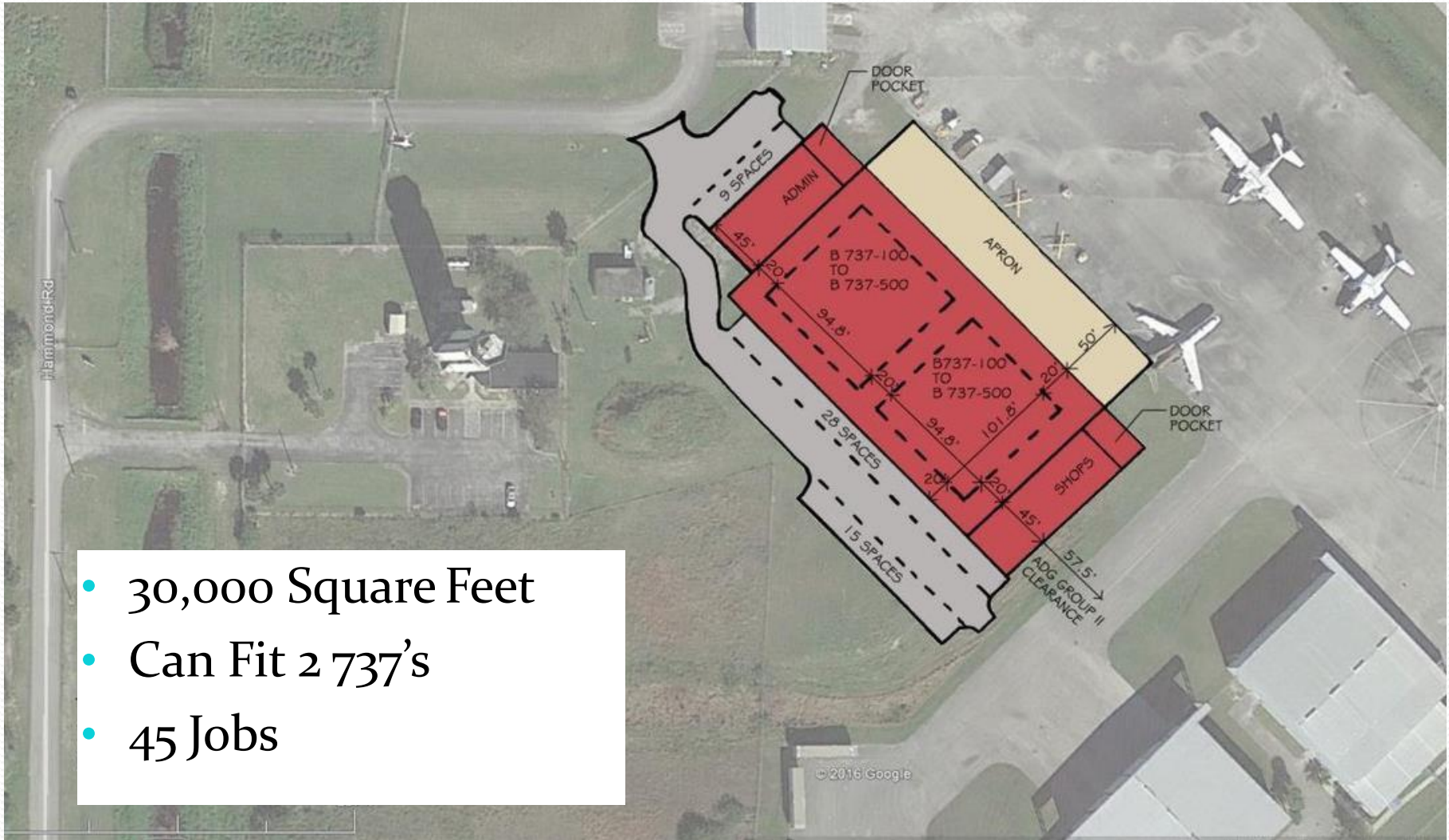


New Developments

- MRO (Maintenance, Repair, Overhaul) Hangar
- Renovated Customs Facility
- Taxiway G (Parallel Runway Connector)
- Stormwater System Study and Improvements
- Airport Master Plan Update
- Air Traffic Control Tower Renovation
- Entrance Improvements
- Parking Lot Improvements



MRO Hangar



- 30,000 Square Feet
- Can Fit 2 737's
- 45 Jobs

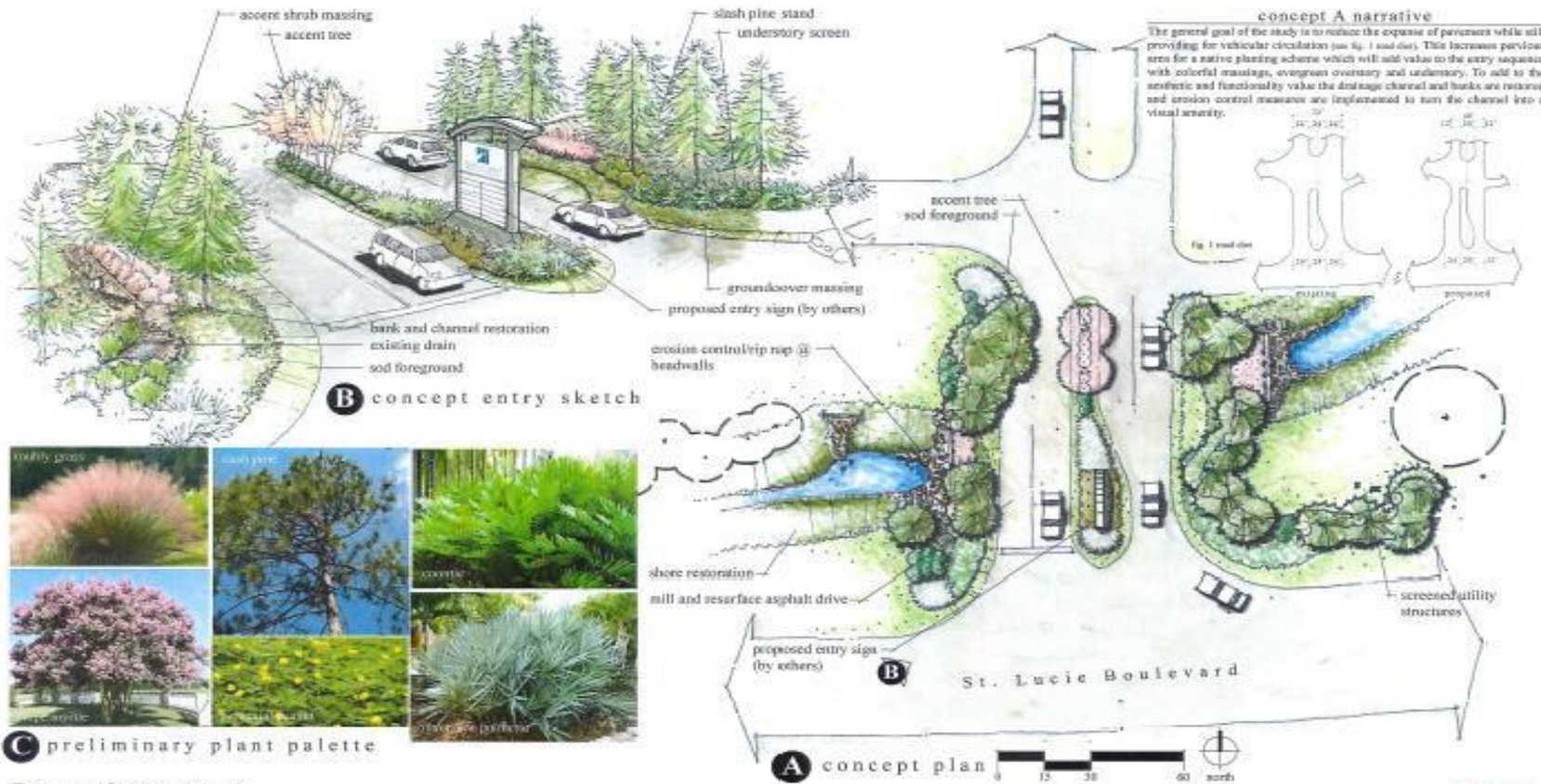
Current MROs at TCIA



- ACES – Aviation Consultant Expert Solutions – Silver Air
- Treasure Coast Jet Center
- Jetcraft Aerostructures
- Bell Aircraft
- Aircraft Maintenance Professionals
- Phoenix Metals
- AeroShade
- Chip's Painting
- Turbine Works



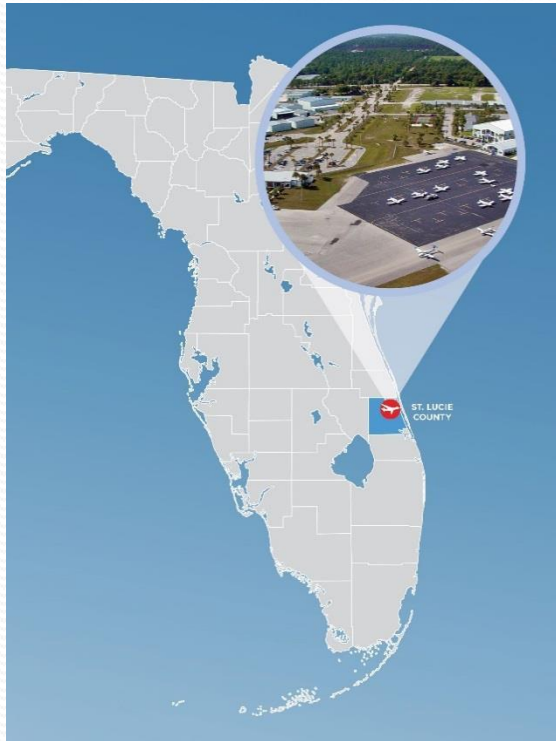
Entrance Improvements



Entry Concept A
Treasure Coast
 International Airport and Business Center



Why Will Our Airport Grow



- Strong Existing Aircraft Industry/Aviation Infrastructure – Most State Aviation Funding
- Low Taxes
- Skilled and Available Work Force
- Flight Training and Schools
- Specialize in Support Services Such As Avionics and Other MRO Activity
- Closer to Major Population Centers
- Weather



Next Steps

- Work with Cities, Chamber and EDC to Promote TCIA
- Part of the EDC Corridor Plan – Job Creation
- Include the Cities in Masterplan Update
- Continue Building Community Support for MRO, Flight Training, FLZ, Business Jets, Customs and Commercial Air Service
- Work with Department of Economic Opportunity, Enterprise Florida, EDA, TPO and the FDOT to Continue TCIA Economic Development
- Working with Existing Airport Users Such As Missionary Flights



TCIA Today



Facilitate Private Investment





(5) Airport West
Commerce Park

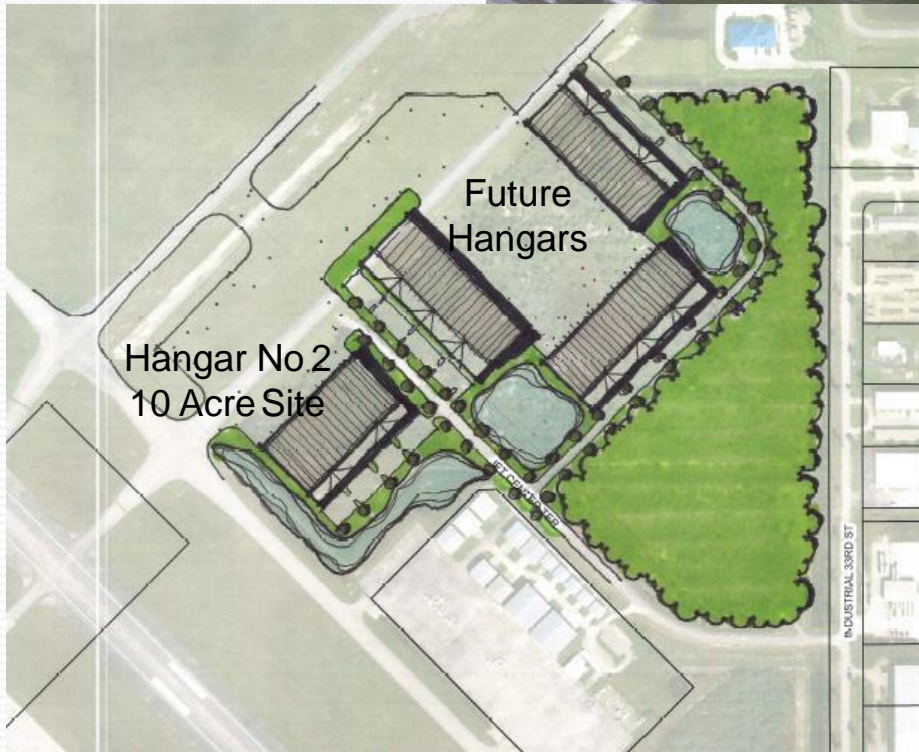
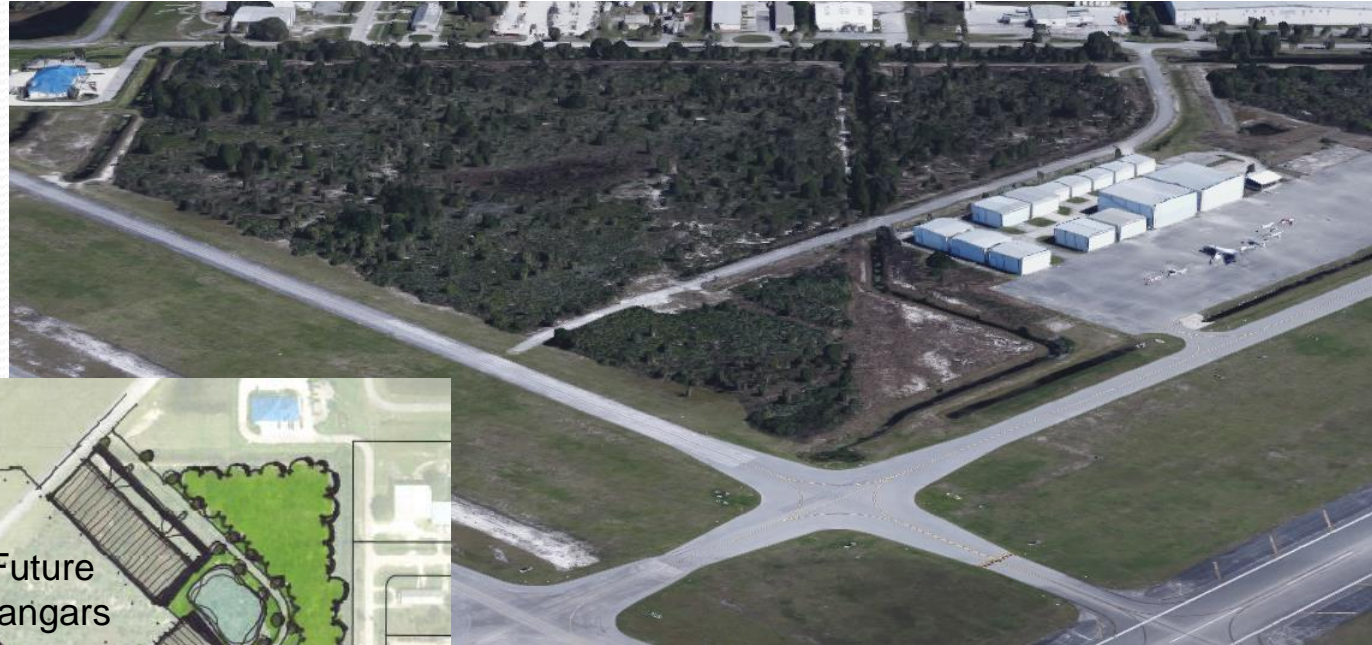
(4) West End
Acreage

(1) Hangar
No 1

(3) Southwest
Airport Acreage

(2) Hangar No 2
& Property

Hangar No. 2



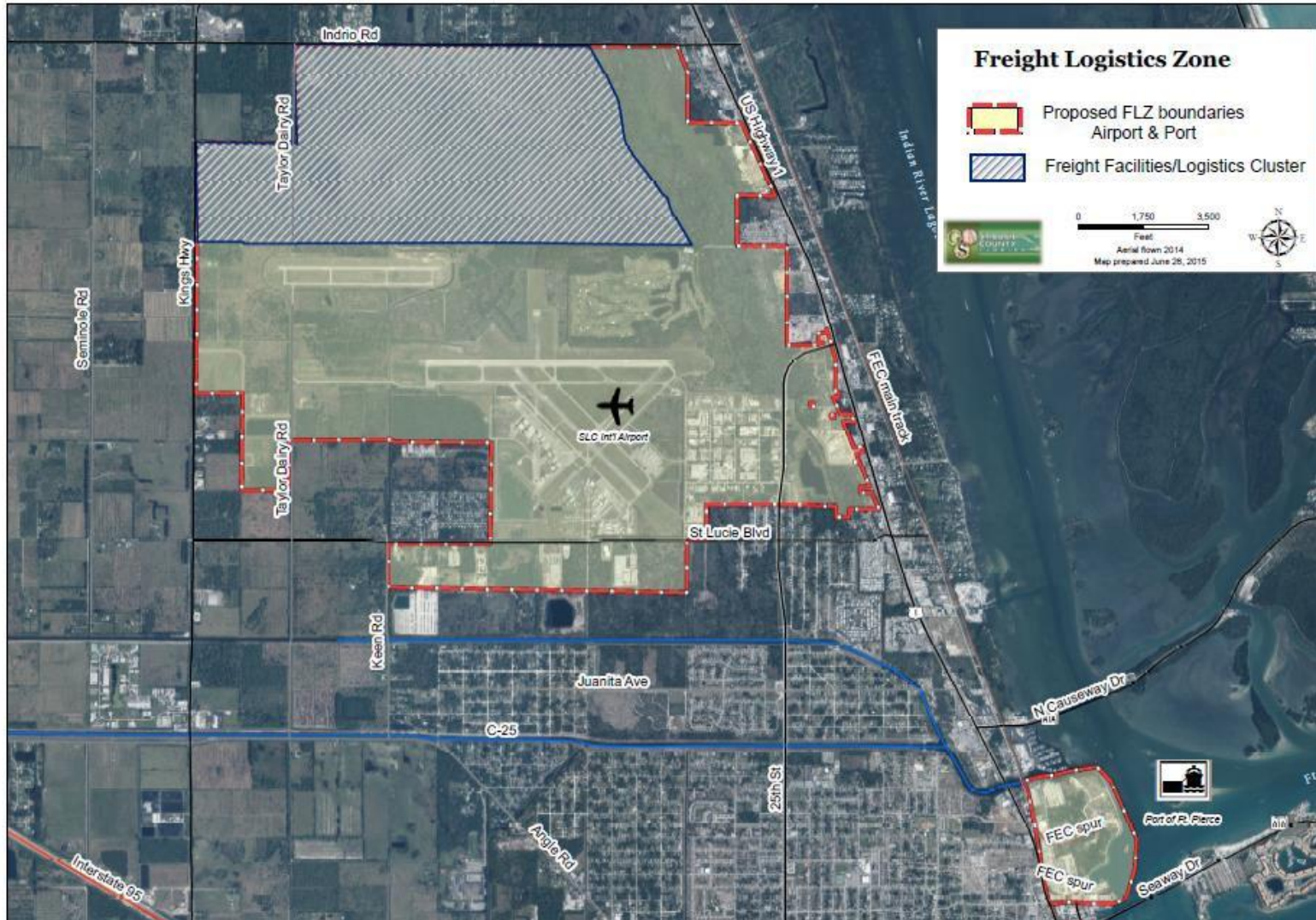
Southwest Airport Acreage



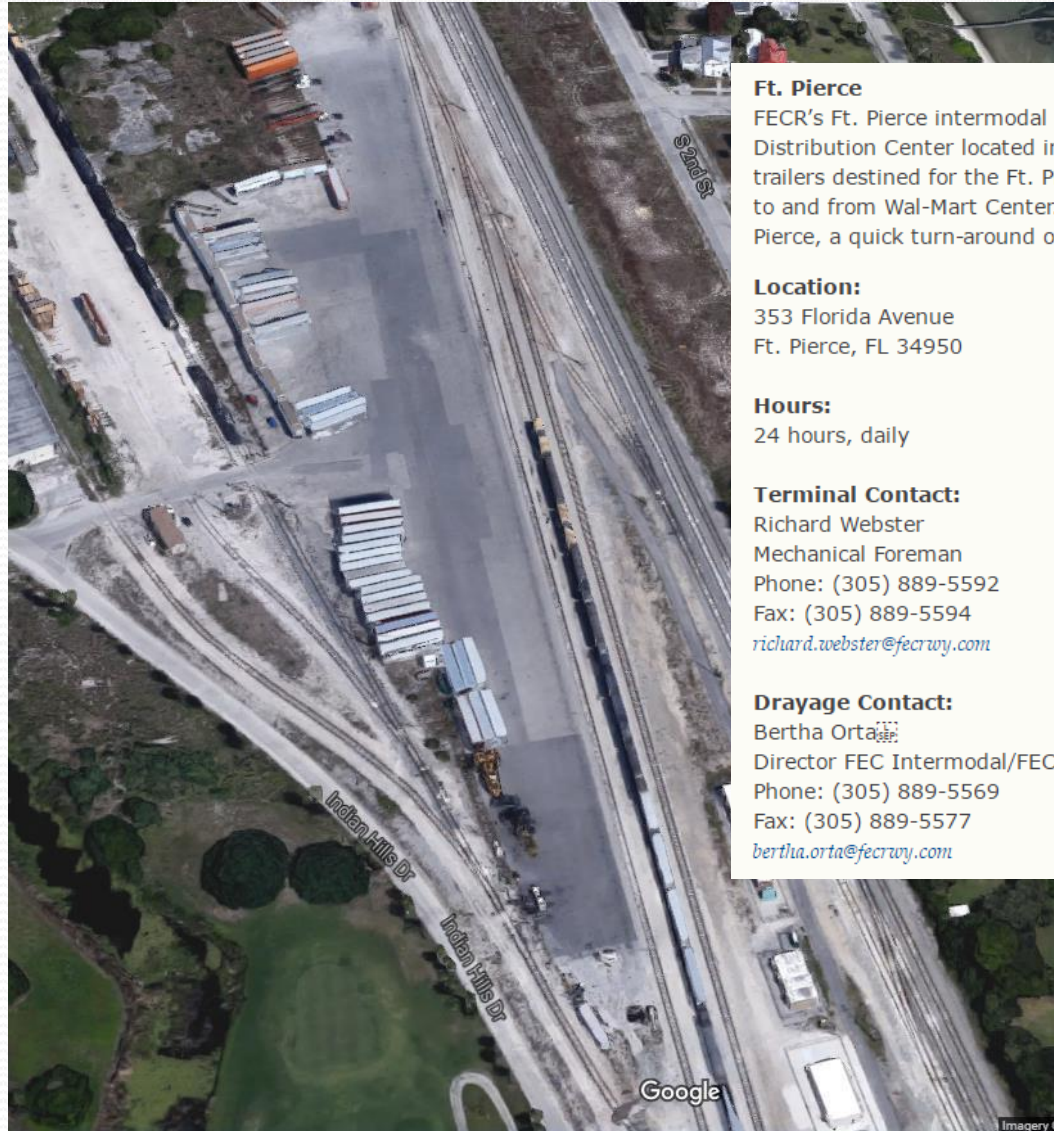
West End Acreage



TCIA Freight Logistics Zone



TCIA Freight Logistics Zone



Ft. Pierce

FECR's Ft. Pierce intermodal ramp facility is just a few miles from the huge Wal-Mart Distribution Center located in Ft. Pierce. FECR makes it easy for motor carriers to ship trailers destined for the Ft. Pierce area by providing destination drayage shuttle service to and from Wal-Mart Center. With an offering of one-train per day to and from Ft. Pierce, a quick turn-around on equipment creates a balanced lane for customers.

Location:

353 Florida Avenue
Ft. Pierce, FL 34950

Hours:

24 hours, daily

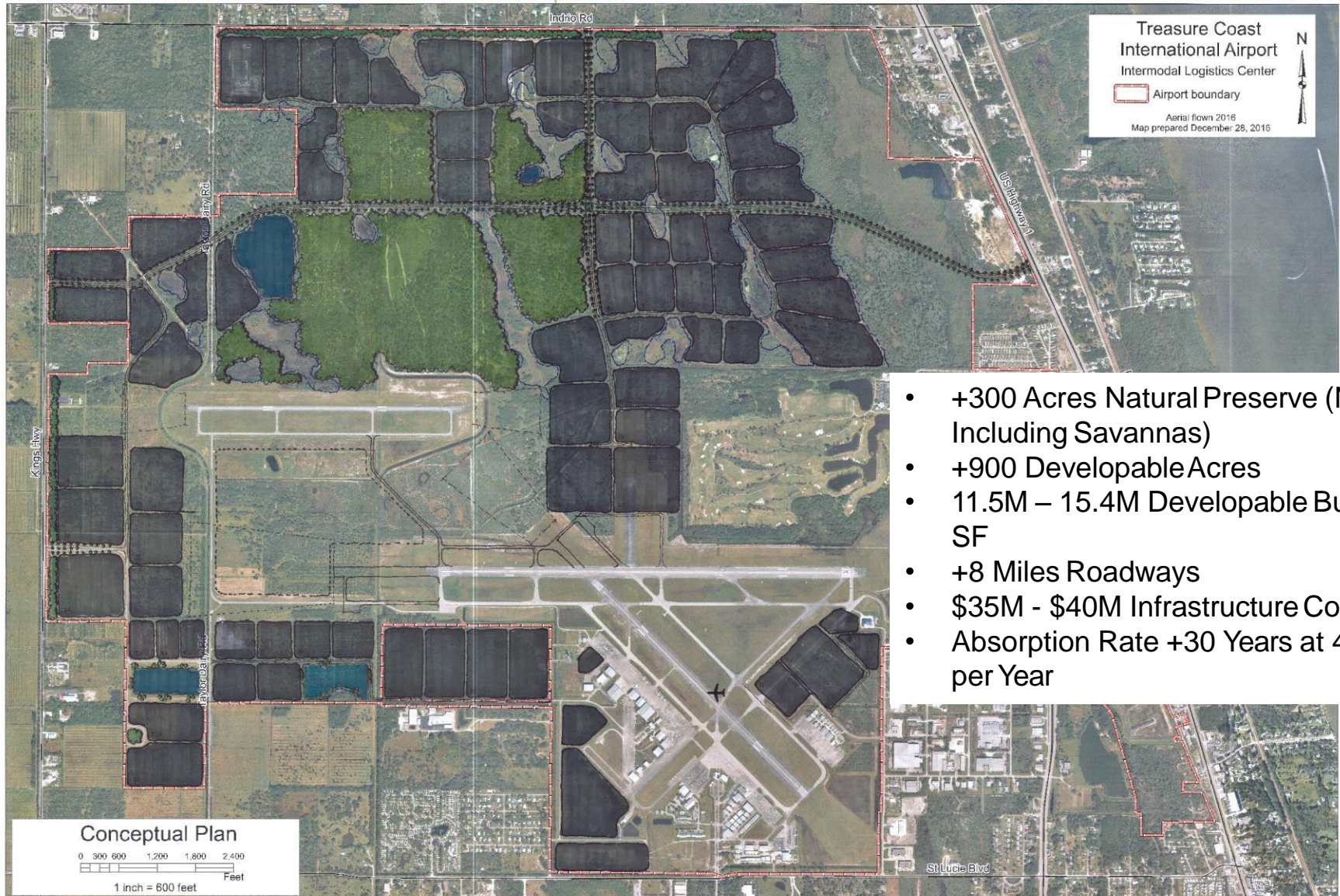
Terminal Contact:

Richard Webster
Mechanical Foreman
Phone: (305) 889-5592
Fax: (305) 889-5594
richard.webster@fecrwy.com

Drayage Contact:

Bertha Orta
Director FEC Intermodal/FECHS
Phone: (305) 889-5569
Fax: (305) 889-5577
bertha.orta@fecrwy.com

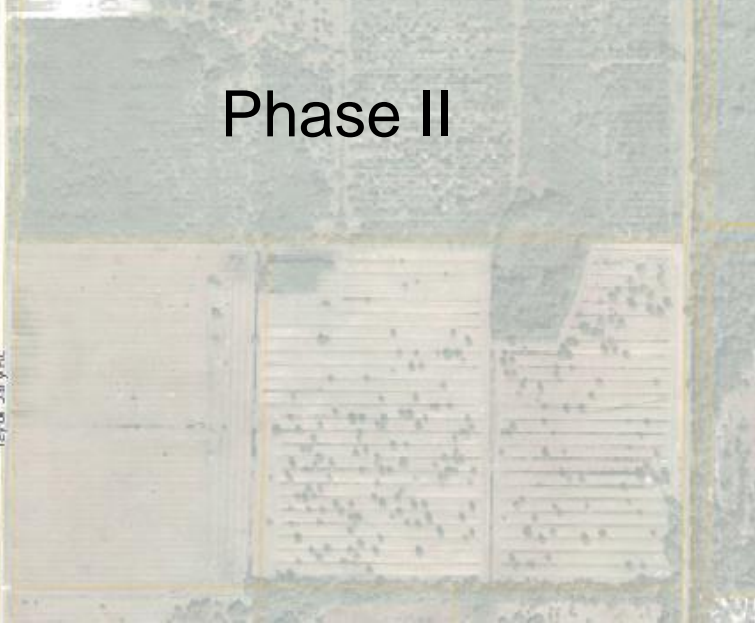
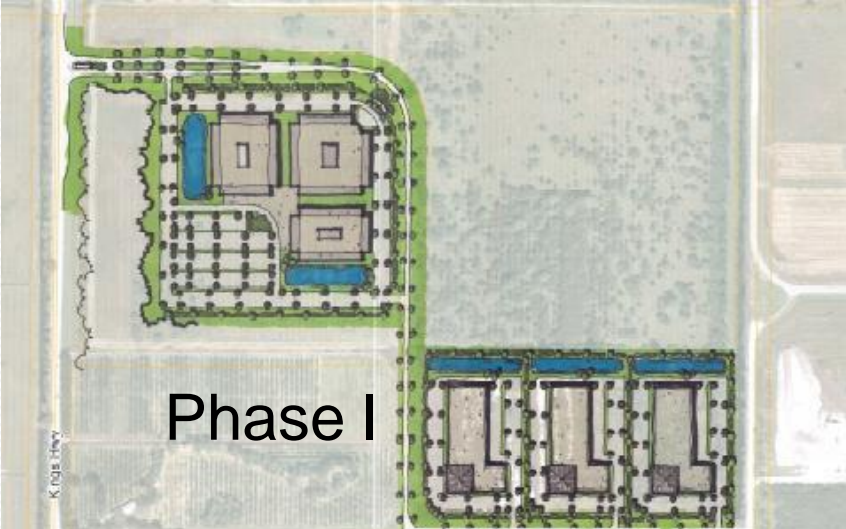
TCIA Freight Logistics Zone



TCIA Freight Logistics Zone



Airport West Commerce Park



TCIA Passenger Service

Treasure Coast International Airport Fort Pierce, Florida

Year Ended Second Quarter 2016

December 2016

Zip Codes Included In This Study Shown below - Fort Pierce Area



True Market Study

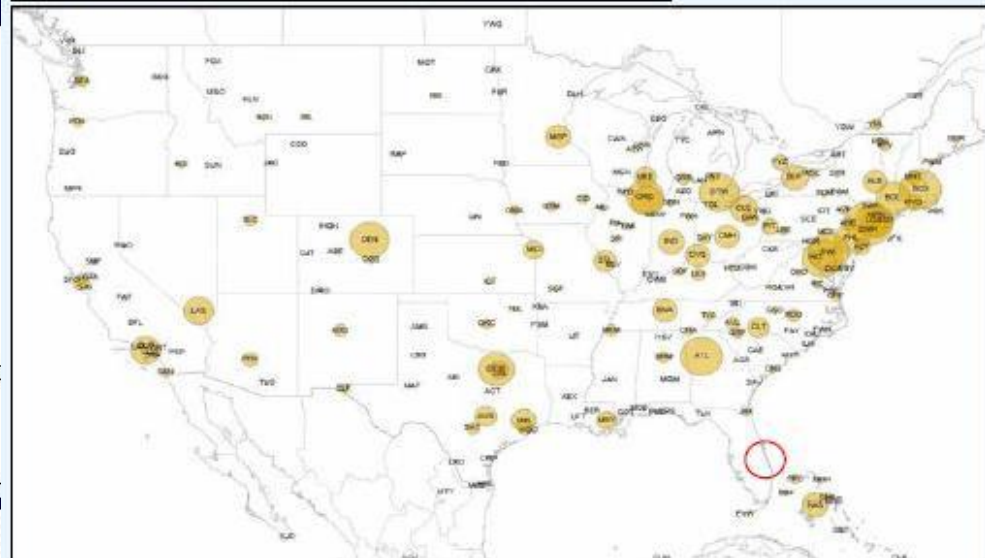
Summary

- The Fort Pierce study area averaged 4,730 PDEW (passengers per day each way) from July 2015 through June 2016, with 0.01% of those passengers using FPR.
- 9,343 study tickets were combined with US DOT Origin-Destination surveys covering the time period from July 2015 through June 2016.
- Fort Lauderdale Hollywood International Airport captured 2,210 domestic and international PDEW (passengers per day each way) from the Fort Pierce study area.
- New York / Newark, Washington / Baltimore and Chicago generated the largest number of passengers from the Fort Pierce study area.
- Delta, American and Southwest capture the largest number of passengers among airlines providing service to Fort Pierce study area passengers.


 3000 Curtis King Blvd.
 Fort Pierce, Florida 34946
 (772) 462-1732


 497 Oakway Road, Suite 280
 Eugene, Oregon 97401
 (541) 341-1601

True Market Passenger Distribution at Fort Pierce



TCIA Surrounding Industry



TCIA Success



FlyTCL.com

