

# Medical Marijuana

Update July 2017

*Legislation of medical marijuana in Florida*



# Legislators in a Special Session Adopted Regulations

- Formalize Voter Referendum  
(70% of voted in favor)
- SB 8-A
- Pre-Empts Local Control
- Regulations Signed by  
Governor

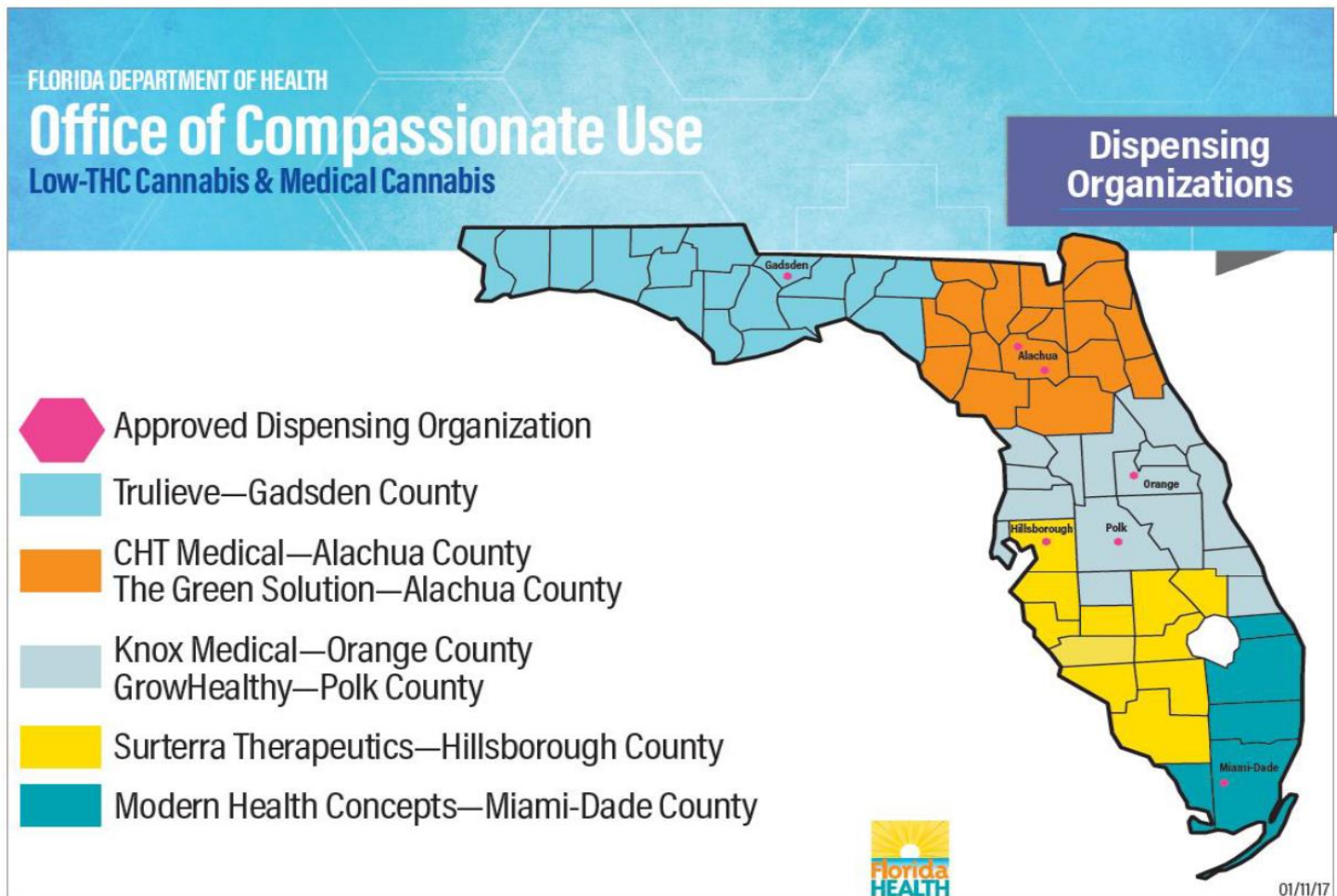


# MMTC's

- Currently 7 are licensed
- Only ones authorized to grow/cultivate, process and dispense Medical Marijuana
- New legislation will add an additional 10 MMTC's



# Medical Marijuana Treatment Centers



# Dispensaries

- Each MMTC will be limited to 25 dispensaries, anywhere in the State \* (that number can grow by a formula within the legislation when population grows)
- New legislation will add an additional 10 MMTC's
- Currently: Around 20,000 persons are registered with the State and the registry is expected to grow to 250,000 within the next 3 years

# Medical Marijuana

- DOH will determine maximum number of dispensing facilities for each region by using the formula below:

$$\begin{array}{c} \text{\% total of} \\ \text{State pop} \end{array} \times \begin{array}{c} \text{Statewide} \\ \text{maximum \#} \\ \text{of dispensing} \end{array} = \begin{array}{c} \text{Total \# of} \\ \text{dispensaries} \\ \text{for that region} \end{array}$$

The rules were written to ensure that dispensaries are dispersed across the State and will help keep dispensaries from clustering in certain areas.

# Revenue & Regulation



- PROHIBITS the collection of sales tax on Medical Marijuana (MM)
- Limits the hours of operation ( 7 am – 9 pm)
- MM cannot be smoked, it can only be consumed in edible form or a self-contained vaporous form
- MM cannot be used in public
- MM cannot resemble candy in any form
- Regulates signage

# Revenue & Regulation

- Actual MM products cannot be displayed
- All MM must be kept in a locked, secured location





# Revenue & Regulation



- Local governments must treat them the same as Pharmacies, Permitted use in C-3, C-4, and C-5 zoning districts
- Cannot limit the number of dispensaries within the municipal limits, or distances apart from other dispensaries
- Cannot be located within 500 feet of school, unless the City conducts a public hearing to allow (similar to waiver of distance procedure)

# Can We Say “NO”?

- The state gives Cities the ability to say no by enacting a ban on dispensaries.

# Examples of Local government Response to Legislation

- St. Lucie County - at this time a ban has not been determined, they have one applicant being reviewed for a dispensary.
- City of Vero Beach – approved a dispensary two months ago, but also will be moving forward with a ban, taking a “one and done” approach. The approved dispensary will be grandfathered in.
- Port St. Lucie - Staff has indicated it will not be pursuing a ban.



# Examples of Local government Response in Florida

- Orlando is discussing a ban – two dispensaries have been approved so far.
- Winter Garden and Winter Park both are discussing a ban.
- City of Sarasota will have a ban in place at the time their moratorium expires (July 17)

**Questions?**  
**Discussion?**  
**Consensus?**