

OS-1

R-2

C-3

R-1

CN, Commercial Neighborhood
(St. Lucie County)

C-1

C-3

U.S. Highway 1

Midway Road

Melville Road

E-1

AG-1
(SLC)

CN
(SLC)

C-1

CN
(SLC)

GC
(SLC)

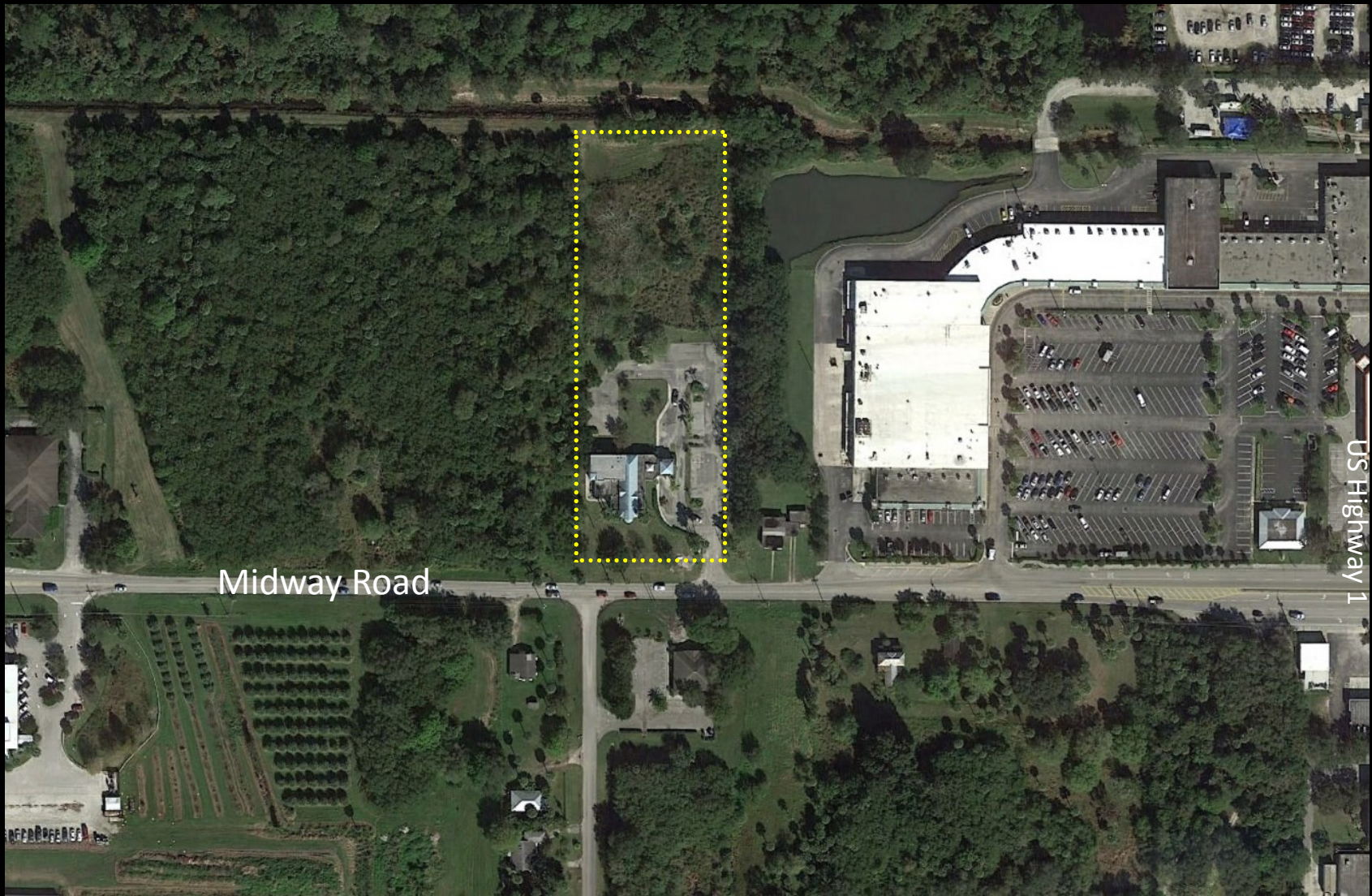
AR-1
(SLC)

RS-3
(SLC)

CN
(SLC)

- Single-Family Low Density (R-1).
- Recreational Open Space (OS-1).
- Single-Family Estate (E-1).
- Office Commercial (C-1)
- General Commercial (C-3)





Midway Road

US Highway 1



604 Midway Road

Site Aerial

