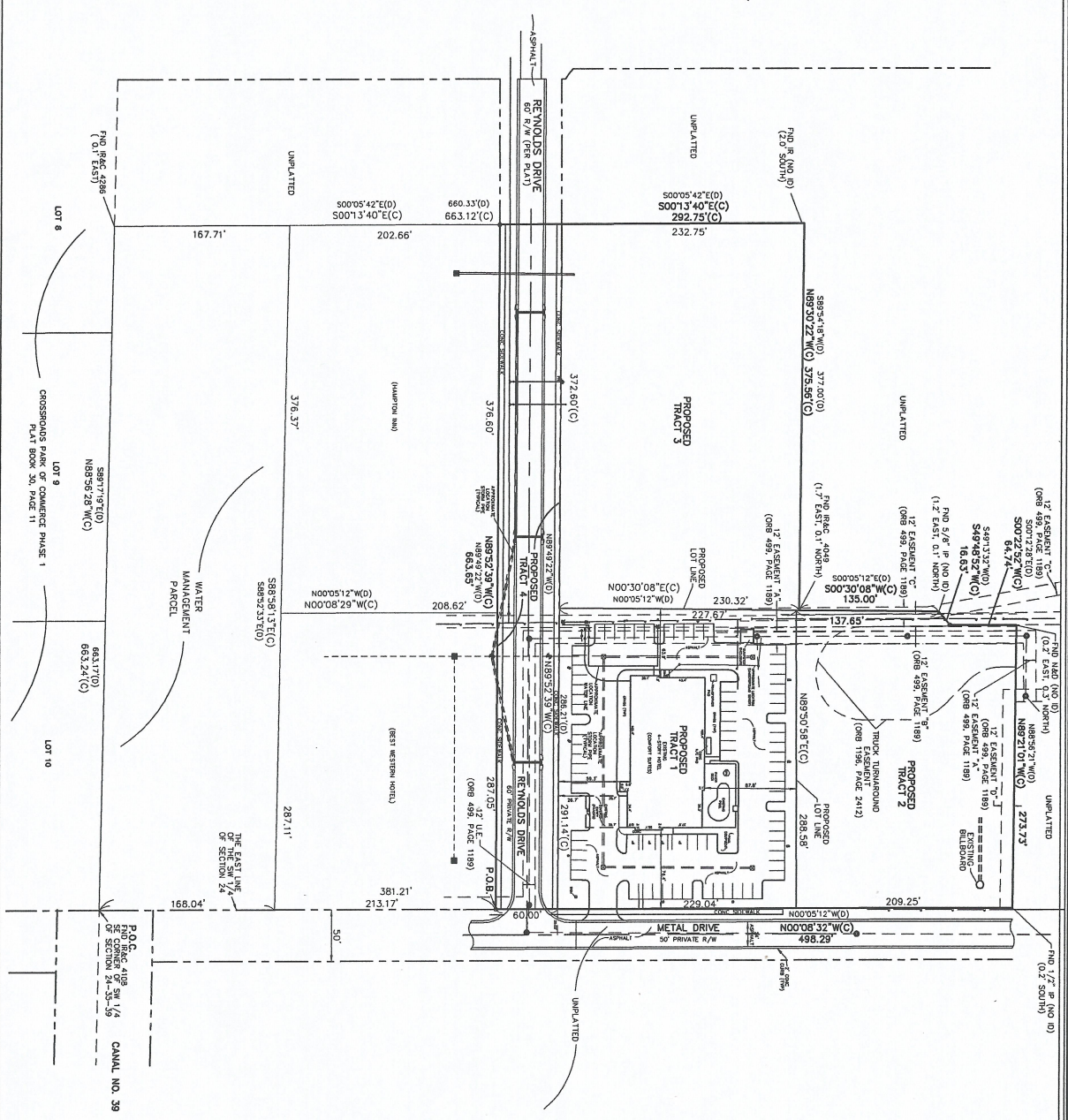


- LEGEND**
- 1 - CORNER MARKER
 - 2 - CORNER MARKER
 - 3 - CORNER MARKER
 - 4 - CORNER MARKER
 - 5 - CORNER MARKER
 - 6 - CORNER MARKER
 - 7 - CORNER MARKER
 - 8 - CORNER MARKER
 - 9 - CORNER MARKER
 - 10 - CORNER MARKER
 - 11 - CORNER MARKER
 - 12 - CORNER MARKER
 - 13 - CORNER MARKER
 - 14 - CORNER MARKER
 - 15 - CORNER MARKER
 - 16 - CORNER MARKER
 - 17 - CORNER MARKER
 - 18 - CORNER MARKER
 - 19 - CORNER MARKER
 - 20 - CORNER MARKER
 - 21 - CORNER MARKER
 - 22 - CORNER MARKER
 - 23 - CORNER MARKER
 - 24 - CORNER MARKER
 - 25 - CORNER MARKER
 - 26 - CORNER MARKER
 - 27 - CORNER MARKER
 - 28 - CORNER MARKER
 - 29 - CORNER MARKER
 - 30 - CORNER MARKER
 - 31 - CORNER MARKER
 - 32 - CORNER MARKER
 - 33 - CORNER MARKER
 - 34 - CORNER MARKER
 - 35 - CORNER MARKER
 - 36 - CORNER MARKER
 - 37 - CORNER MARKER
 - 38 - CORNER MARKER
 - 39 - CORNER MARKER
 - 40 - CORNER MARKER
 - 41 - CORNER MARKER
 - 42 - CORNER MARKER
 - 43 - CORNER MARKER
 - 44 - CORNER MARKER
 - 45 - CORNER MARKER
 - 46 - CORNER MARKER
 - 47 - CORNER MARKER
 - 48 - CORNER MARKER
 - 49 - CORNER MARKER
 - 50 - CORNER MARKER
 - 51 - CORNER MARKER
 - 52 - CORNER MARKER
 - 53 - CORNER MARKER
 - 54 - CORNER MARKER
 - 55 - CORNER MARKER
 - 56 - CORNER MARKER
 - 57 - CORNER MARKER
 - 58 - CORNER MARKER
 - 59 - CORNER MARKER
 - 60 - CORNER MARKER
 - 61 - CORNER MARKER
 - 62 - CORNER MARKER
 - 63 - CORNER MARKER
 - 64 - CORNER MARKER
 - 65 - CORNER MARKER
 - 66 - CORNER MARKER
 - 67 - CORNER MARKER
 - 68 - CORNER MARKER
 - 69 - CORNER MARKER
 - 70 - CORNER MARKER
 - 71 - CORNER MARKER
 - 72 - CORNER MARKER
 - 73 - CORNER MARKER
 - 74 - CORNER MARKER
 - 75 - CORNER MARKER
 - 76 - CORNER MARKER
 - 77 - CORNER MARKER
 - 78 - CORNER MARKER
 - 79 - CORNER MARKER
 - 80 - CORNER MARKER
 - 81 - CORNER MARKER
 - 82 - CORNER MARKER
 - 83 - CORNER MARKER
 - 84 - CORNER MARKER
 - 85 - CORNER MARKER
 - 86 - CORNER MARKER
 - 87 - CORNER MARKER
 - 88 - CORNER MARKER
 - 89 - CORNER MARKER
 - 90 - CORNER MARKER
 - 91 - CORNER MARKER
 - 92 - CORNER MARKER
 - 93 - CORNER MARKER
 - 94 - CORNER MARKER
 - 95 - CORNER MARKER
 - 96 - CORNER MARKER
 - 97 - CORNER MARKER
 - 98 - CORNER MARKER
 - 99 - CORNER MARKER
 - 100 - CORNER MARKER

CROSSROADS PARKWAY
CROSSROADS PARK OF COMMERCE PHASE 1
PLAT BOOK 30, PAGE 11



DESCRIPTION

SECTION 24, TOWNSHIP 35 SOUTH, RANGE 35 EAST, COUNTY OF ALACHUA, FLORIDA. BEING THE SOUTHWEST QUARTER OF SAID SECTION 24, A DISTANCE OF 381.21 FEET TO THE POINT OF BEGINNING.

THE LINE COMMENCE NORTH 00°59'12" WEST ALONG THE EAST LINE THENCE NORTH 88°30'21" WEST, A DISTANCE OF 227.75 FEET; THENCE SOUTH 00°12'28" EAST, A DISTANCE OF 64.74 FEET; THENCE SOUTH 00°05'32" WEST, A DISTANCE OF 16.63 FEET; THENCE SOUTH 88°34'18" WEST, A DISTANCE OF 377.00 FEET; THENCE SOUTH 88°30'21" WEST, A DISTANCE OF 282.75 FEET; THENCE SOUTH 00°05'32" WEST, A DISTANCE OF 227.75 FEET; THENCE SOUTH 00°12'28" EAST, A DISTANCE OF 64.74 FEET; THENCE NORTH 00°59'12" WEST, A DISTANCE OF 381.21 FEET TO THE POINT OF BEGINNING.

SAID LAND CONTAINS 5.79 ACRES, MORE OR LESS.

SURVEY NOTES

1. THE SURVEY WAS MADE WITHOUT A SIGNATURE AND ORIGINAL EMPLOYED SEAL OF A FLORIDA PROFESSIONAL LAND SURVEYOR.
2. DISCREPANCIES PROVIDED BY CLIENT AND/OR THEIR AGENT.
3. THE SURVEY WAS MADE FROM A POINT OF BEGINNING AS SHOWN HEREON AND IS BASED ON THE WEST LINE OF MONUMENTS, BEARING NORTH 00°05'32" WEST, A DISTANCE OF 16.63 FEET.
4. BEARINGS SHOWN HEREON ARE BASED ON THE WEST LINE OF MONUMENTS, BEARING NORTH 00°05'32" WEST, A DISTANCE OF 16.63 FEET.
5. LANDS SHOWN HEREON WERE NOT ABSTRACTED FOR EASEMENTS PUBLIC RECORDS.
6. PROPERTY IS VACANT EXCEPT FOR EXISTING HOTEL SITE.
7. PROPERTY LIES IN FLOOD ZONE "X" PER MAP 121100710 F.

BOUNDARY SURVEY
PREPARED FOR
PREMIER HOSPITALITY, INC.

REVISIONS

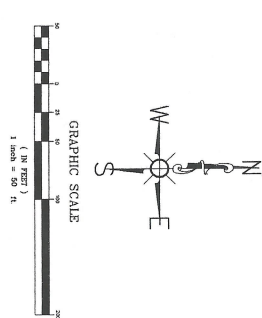
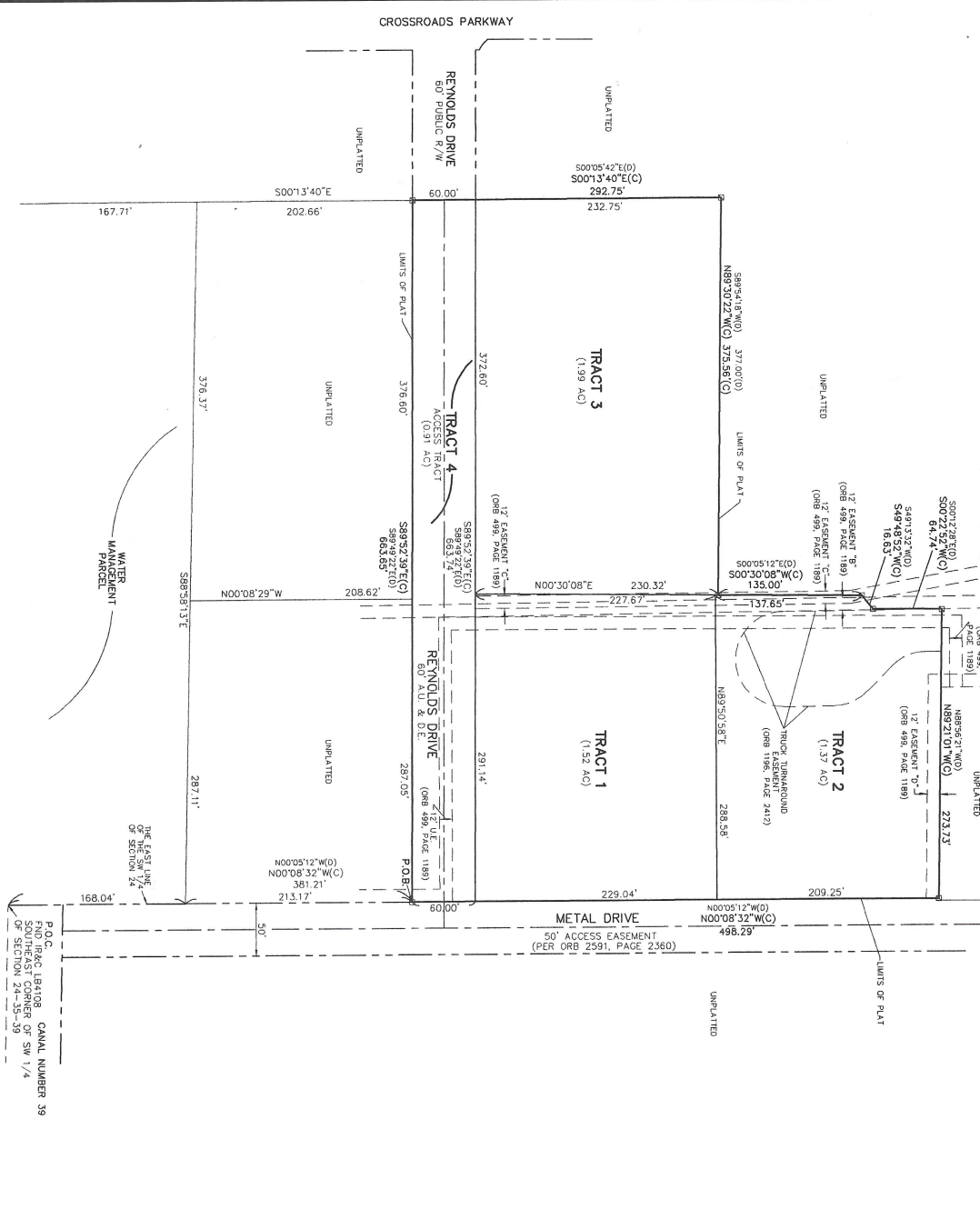
NO.	DATE	DESCRIPTION
1	04/10/07	FIELD SURVEY
2	04/10/07	FIELD SURVEY
3	04/10/07	FIELD SURVEY
4	04/10/07	FIELD SURVEY
5	04/10/07	FIELD SURVEY
6	04/10/07	FIELD SURVEY
7	04/10/07	FIELD SURVEY
8	04/10/07	FIELD SURVEY
9	04/10/07	FIELD SURVEY
10	04/10/07	FIELD SURVEY
11	04/10/07	FIELD SURVEY
12	04/10/07	FIELD SURVEY
13	04/10/07	FIELD SURVEY
14	04/10/07	FIELD SURVEY
15	04/10/07	FIELD SURVEY
16	04/10/07	FIELD SURVEY
17	04/10/07	FIELD SURVEY
18	04/10/07	FIELD SURVEY
19	04/10/07	FIELD SURVEY
20	04/10/07	FIELD SURVEY
21	04/10/07	FIELD SURVEY
22	04/10/07	FIELD SURVEY
23	04/10/07	FIELD SURVEY
24	04/10/07	FIELD SURVEY
25	04/10/07	FIELD SURVEY
26	04/10/07	FIELD SURVEY
27	04/10/07	FIELD SURVEY
28	04/10/07	FIELD SURVEY
29	04/10/07	FIELD SURVEY
30	04/10/07	FIELD SURVEY
31	04/10/07	FIELD SURVEY
32	04/10/07	FIELD SURVEY
33	04/10/07	FIELD SURVEY
34	04/10/07	FIELD SURVEY
35	04/10/07	FIELD SURVEY
36	04/10/07	FIELD SURVEY
37	04/10/07	FIELD SURVEY
38	04/10/07	FIELD SURVEY
39	04/10/07	FIELD SURVEY
40	04/10/07	FIELD SURVEY
41	04/10/07	FIELD SURVEY
42	04/10/07	FIELD SURVEY
43	04/10/07	FIELD SURVEY
44	04/10/07	FIELD SURVEY
45	04/10/07	FIELD SURVEY
46	04/10/07	FIELD SURVEY
47	04/10/07	FIELD SURVEY
48	04/10/07	FIELD SURVEY
49	04/10/07	FIELD SURVEY
50	04/10/07	FIELD SURVEY
51	04/10/07	FIELD SURVEY
52	04/10/07	FIELD SURVEY
53	04/10/07	FIELD SURVEY
54	04/10/07	FIELD SURVEY
55	04/10/07	FIELD SURVEY
56	04/10/07	FIELD SURVEY
57	04/10/07	FIELD SURVEY
58	04/10/07	FIELD SURVEY
59	04/10/07	FIELD SURVEY
60	04/10/07	FIELD SURVEY
61	04/10/07	FIELD SURVEY
62	04/10/07	FIELD SURVEY
63	04/10/07	FIELD SURVEY
64	04/10/07	FIELD SURVEY
65	04/10/07	FIELD SURVEY
66	04/10/07	FIELD SURVEY
67	04/10/07	FIELD SURVEY
68	04/10/07	FIELD SURVEY
69	04/10/07	FIELD SURVEY
70	04/10/07	FIELD SURVEY
71	04/10/07	FIELD SURVEY
72	04/10/07	FIELD SURVEY
73	04/10/07	FIELD SURVEY
74	04/10/07	FIELD SURVEY
75	04/10/07	FIELD SURVEY
76	04/10/07	FIELD SURVEY
77	04/10/07	FIELD SURVEY
78	04/10/07	FIELD SURVEY
79	04/10/07	FIELD SURVEY
80	04/10/07	FIELD SURVEY
81	04/10/07	FIELD SURVEY
82	04/10/07	FIELD SURVEY
83	04/10/07	FIELD SURVEY
84	04/10/07	FIELD SURVEY
85	04/10/07	FIELD SURVEY
86	04/10/07	FIELD SURVEY
87	04/10/07	FIELD SURVEY
88	04/10/07	FIELD SURVEY
89	04/10/07	FIELD SURVEY
90	04/10/07	FIELD SURVEY
91	04/10/07	FIELD SURVEY
92	04/10/07	FIELD SURVEY
93	04/10/07	FIELD SURVEY
94	04/10/07	FIELD SURVEY
95	04/10/07	FIELD SURVEY
96	04/10/07	FIELD SURVEY
97	04/10/07	FIELD SURVEY
98	04/10/07	FIELD SURVEY
99	04/10/07	FIELD SURVEY
100	04/10/07	FIELD SURVEY

LAVENTURE & ASSOCIATES, INC.
PROFESSIONAL SURVEYING AND MAPPING
774 WEST WILKINSON ROAD
FORT PIERCE, FLORIDA 34942
(772) 398-4500 Phone (772) 398-4508 Fax

DATE 04/10/07
HONOR SCALE 1"=50'
VERT. SCALE 1"=4'
JOB NO. 170088-1-8
SHEET 1 OF 1

PREMIER

LYING IN SECTION 24, TOWNSHIP 36 SOUTH, RANGE 39 EAST
CITY OF FORT PIERCE, FLORIDA
ST. LUCIE COUNTY, FLORIDA



- LEGEND:**
- AKL = 4" x 4" IRONMENT SURVEY MONUMENT
 - ALU = 4" x 4" ALUMINUM SURVEY MONUMENT
 - 6" = 6" IRON ROD SURVEY MONUMENT
 - 8" = 8" IRON ROD SURVEY MONUMENT
 - 9" = 9" IRON ROD SURVEY MONUMENT
 - 10" = 10" IRON ROD SURVEY MONUMENT
 - 12" = 12" IRON ROD SURVEY MONUMENT
 - 14" = 14" IRON ROD SURVEY MONUMENT
 - 16" = 16" IRON ROD SURVEY MONUMENT
 - 18" = 18" IRON ROD SURVEY MONUMENT
 - 20" = 20" IRON ROD SURVEY MONUMENT
 - 22" = 22" IRON ROD SURVEY MONUMENT
 - 24" = 24" IRON ROD SURVEY MONUMENT
 - 26" = 26" IRON ROD SURVEY MONUMENT
 - 28" = 28" IRON ROD SURVEY MONUMENT
 - 30" = 30" IRON ROD SURVEY MONUMENT
 - 32" = 32" IRON ROD SURVEY MONUMENT
 - 34" = 34" IRON ROD SURVEY MONUMENT
 - 36" = 36" IRON ROD SURVEY MONUMENT
 - 38" = 38" IRON ROD SURVEY MONUMENT
 - 40" = 40" IRON ROD SURVEY MONUMENT
 - 42" = 42" IRON ROD SURVEY MONUMENT
 - 44" = 44" IRON ROD SURVEY MONUMENT
 - 46" = 46" IRON ROD SURVEY MONUMENT
 - 48" = 48" IRON ROD SURVEY MONUMENT
 - 50" = 50" IRON ROD SURVEY MONUMENT
 - 52" = 52" IRON ROD SURVEY MONUMENT
 - 54" = 54" IRON ROD SURVEY MONUMENT
 - 56" = 56" IRON ROD SURVEY MONUMENT
 - 58" = 58" IRON ROD SURVEY MONUMENT
 - 60" = 60" IRON ROD SURVEY MONUMENT
 - 62" = 62" IRON ROD SURVEY MONUMENT
 - 64" = 64" IRON ROD SURVEY MONUMENT
 - 66" = 66" IRON ROD SURVEY MONUMENT
 - 68" = 68" IRON ROD SURVEY MONUMENT
 - 70" = 70" IRON ROD SURVEY MONUMENT
 - 72" = 72" IRON ROD SURVEY MONUMENT
 - 74" = 74" IRON ROD SURVEY MONUMENT
 - 76" = 76" IRON ROD SURVEY MONUMENT
 - 78" = 78" IRON ROD SURVEY MONUMENT
 - 80" = 80" IRON ROD SURVEY MONUMENT
 - 82" = 82" IRON ROD SURVEY MONUMENT
 - 84" = 84" IRON ROD SURVEY MONUMENT
 - 86" = 86" IRON ROD SURVEY MONUMENT
 - 88" = 88" IRON ROD SURVEY MONUMENT
 - 90" = 90" IRON ROD SURVEY MONUMENT
 - 92" = 92" IRON ROD SURVEY MONUMENT
 - 94" = 94" IRON ROD SURVEY MONUMENT
 - 96" = 96" IRON ROD SURVEY MONUMENT
 - 98" = 98" IRON ROD SURVEY MONUMENT
 - 100" = 100" IRON ROD SURVEY MONUMENT

PREPARED BY:
LAVENTURE & ASSOCIATES, INC.
1000 W. WINDY ROAD
FORT PIERCE, FLORIDA 34982
(772) 388-6430 Phone / (772) 388-6426 Fax
RICHARD C. LAVENTURE
FLORIDA PROFESSIONAL LAND SURVEYOR # 5209