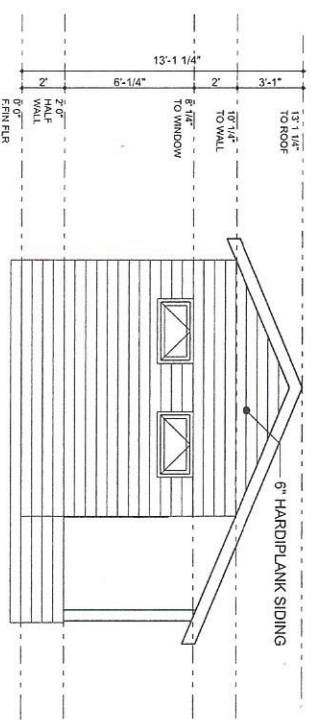
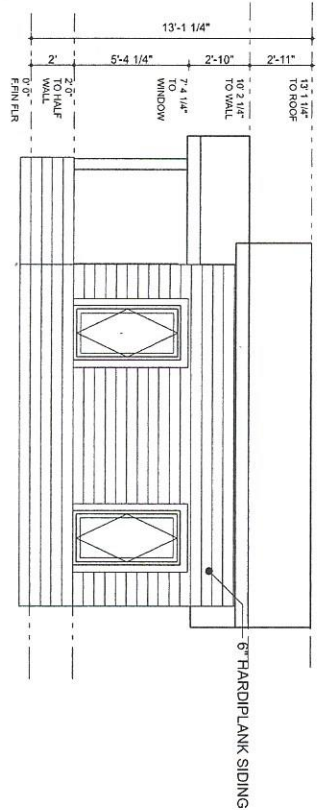


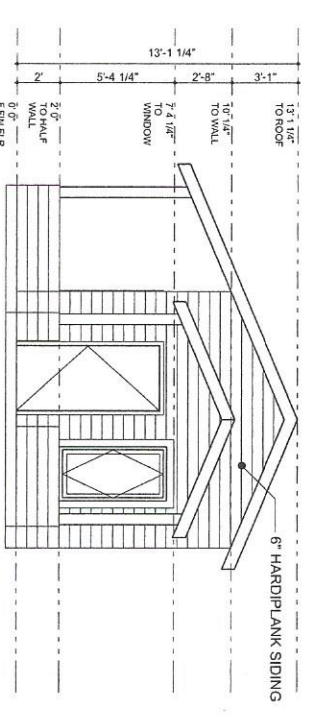
1 SOUTH ELEVATION- OPTION 2
SCALE: 3/8" = 1'-0"



2 WEST ELEVATION- OPTION 2
SCALE: 3/8" = 1'-0"



4 NORTH ELEVATION- OPTION 2
SCALE: 3/8" = 1'-0"



3 EAST ELEVATION- OPTION 2
SCALE: 3/8" = 1'-0"

4600 SELVITZ ROAD
FORT PIERCE, FLORIDA
34981

ARCHITECT

huum
hughesurbanholloway

5158 S.E. Olympia Street
Fort Pierce, FL 34985
787.542.5111
m@huum.com

1525 ANDERSON
1222 Pacific Avenue
Fort Pierce, FL 34981
(888) 555-4372

This document has been created by
means of an application of the software
program AutoCAD or similar. The
program used is not certified by the
author. The author is not responsible for
any errors or omissions.

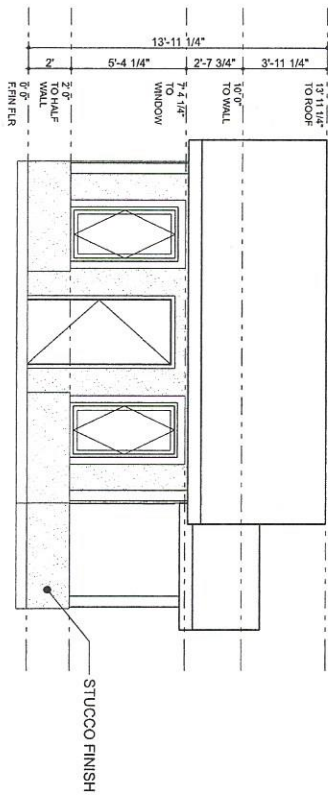


DATE / ISSUE
SCHEMATIC SET 08.21.17

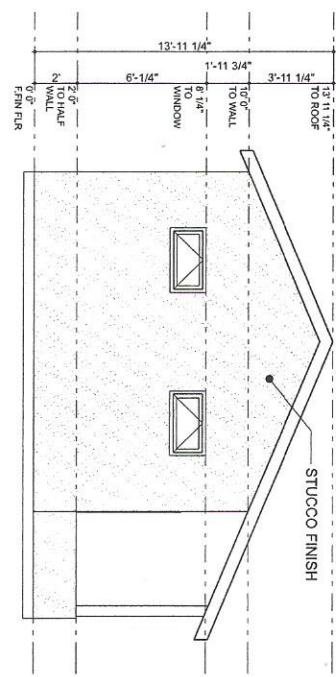
scale: 3/8" = 1'-0"
date: 08/17
drawing

ELEVATIONS

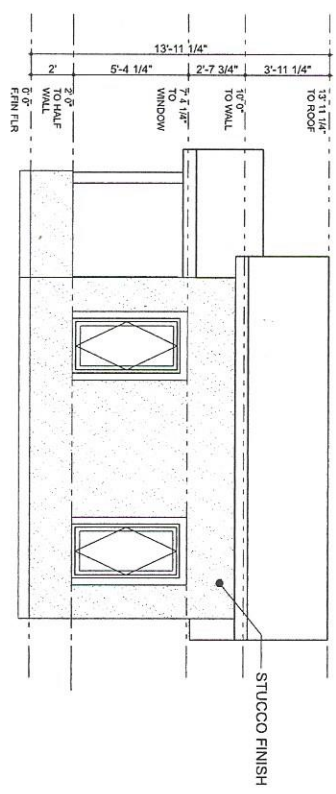
sheet: A-5



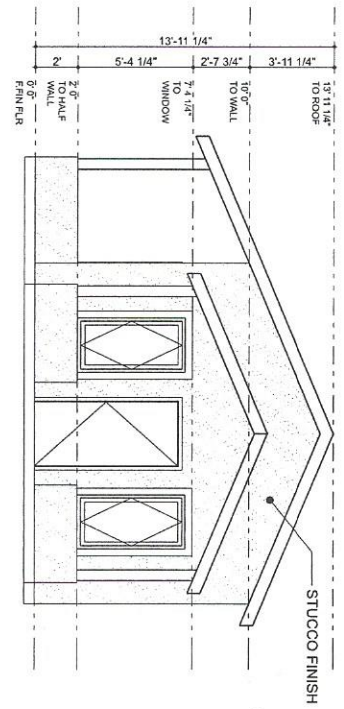
4 SOUTH ELEVATION- OPTION 1
SCALE: 3/8" = 1'-0"



3 WEST ELEVATION- OPTION 1
SCALE: 3/8" = 1'-0"



2 NORTH ELEVATION- OPTION 1
SCALE: 3/8" = 1'-0"



1 EAST ELEVATION- OPTION 1
SCALE: 3/8" = 1'-0"

4600 SELVITZ ROAD
FORT PIERCE, FLORIDA
34981

ARCHITECT:
humm
Hughes Umhirth & Co. Architects
1002 PALM BLVD
FORT PIERCE, FL 34981
PH: 888-333-3333
WWW.HUMMARCHITECTS.COM



DATE / ISSUE:	08.02.17
SCHEMATIC SET	
SCALE:	DATE: 02/17
PROJECT: 10_132	
DRAWING:	
ELEVATIONS	
SHEET:	A-4

This document has been created by a computer program. Any use, reproduction, or modification of this document without the express written consent of the author is prohibited.