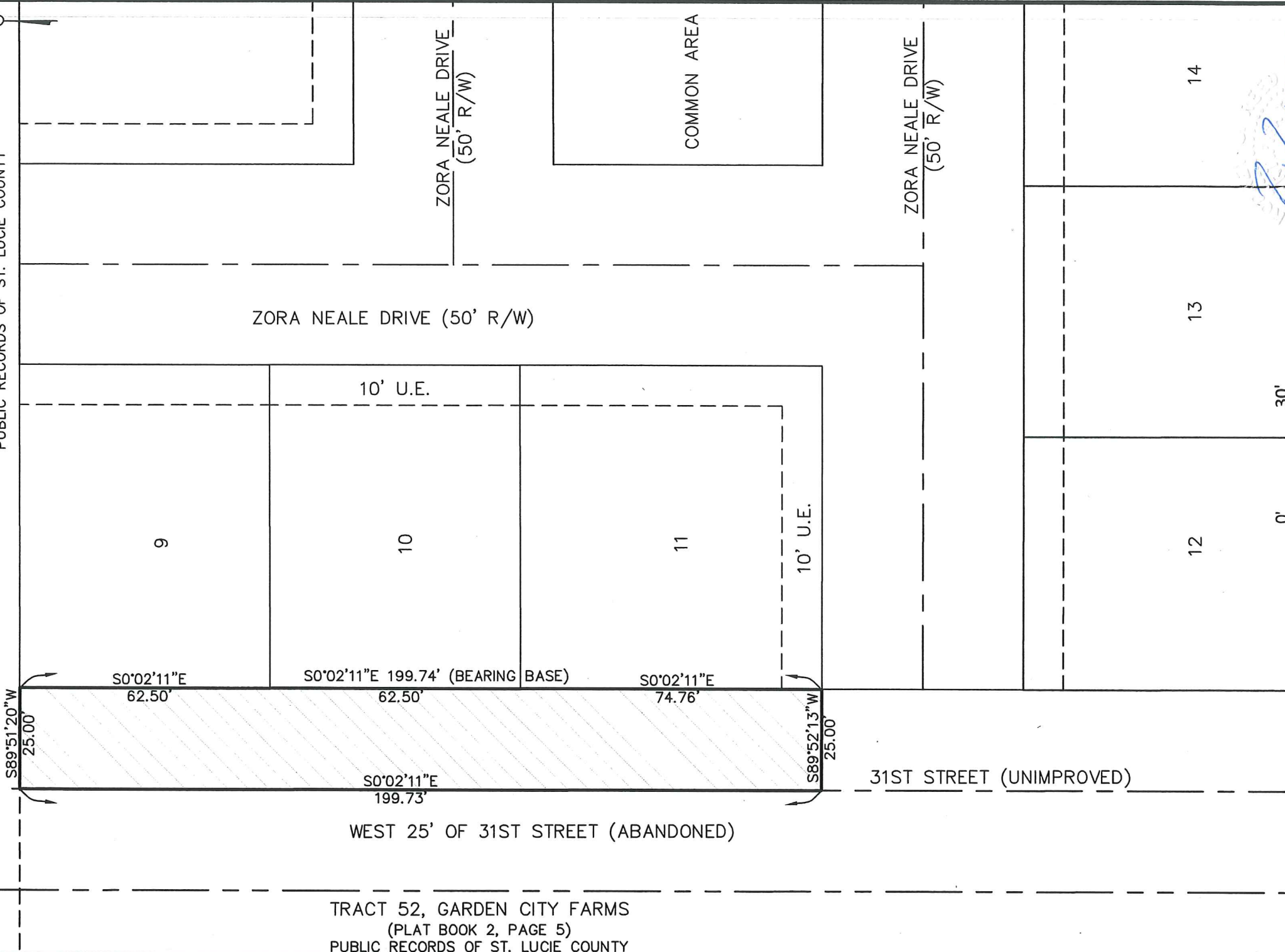


**SKETCH OF LEGAL DESCRIPTION
R/W ABANDONMENT**

TRACT 46, GARDEN CITY FARMS
(PLAT BOOK 2, PAGE 5)
PUBLIC RECORDS OF ST. LUCIE COUNTY



NOTE:
SEE SHEET 2 FOR LEGAL
DESCRIPTION.

THIS IS NOT A SURVEY

ROD REED
P.L.S. #3916
STATE OF FLORIDA

Rod Reed 10.20.16

TRACT 52, GARDEN CITY FARMS
(PLAT BOOK 2, PAGE 5)
PUBLIC RECORDS OF ST. LUCIE COUNTY

SKETCH AND LEGAL DESCRIPTION OF RIGHT-OF-WAY ABANDONMENT PIONEER PARK SUBDIVISION		BOARD OF COUNTY COMMISSIONERS SANIT LUCIE COUNTY, FLORIDA PUBLIC WORKS DEPT., ENGINEERING DIVISION, SURVEY SECTION 2300 VIRGINIA AVE., FORT PIERCE, FLORIDA 34982 TELEPHONE 462-1707	
PROJECT NO. 16602	REVISIONS NO. DATE SUBJECT BY		
SHEET NO. 1 OF 2			

